

FCC/IC identifier marking and labels for WLAN unit cB-0926-02 and cb-0926-03

The FCC/IC identifier marking is situated on the secondary side of the module and is engraved in the solder mask or printed on a label.

Figure 1 and Figure 2 shows how the FCC/IC identifier is implemented on cB-0926-02.

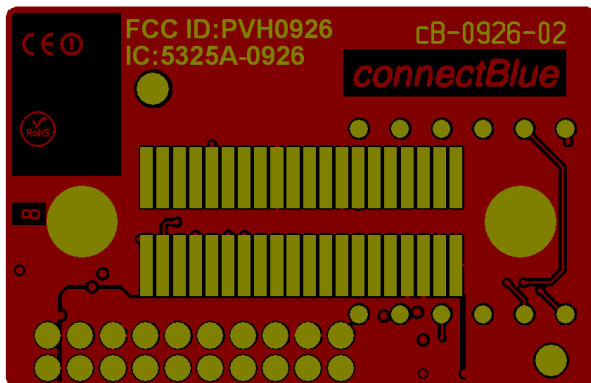


Figure 1 FCC/IC identifier engraved in the secondary side solder mask

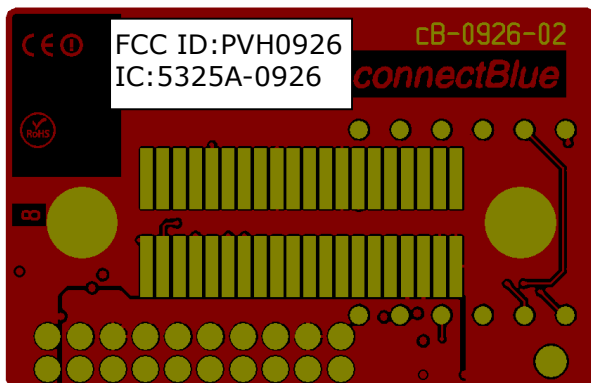


Figure 2 FCC/IC identifier printed on a label affixed on the secondary side

2009-12-07

Figure 3 and Figure 4 shows how the FCC/IC identifier is implemented on cB-0926-03.

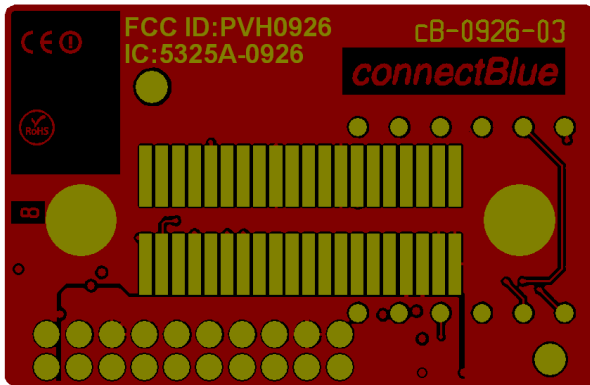


Figure 3 FCC/IC identifier engraved in the secondary side solder mask

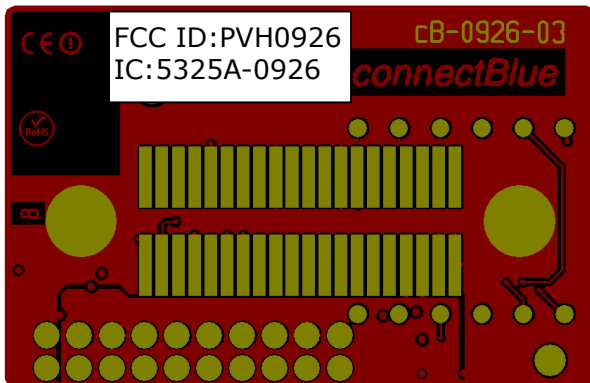


Figure 4 FCC/IC identifier printed on a label affixed on the secondary side

2009-12-07

An auxiliary label will be provided for systems using the module where the original label will not be visible when the module is installed.

Instructions on how to attach the auxiliary label in compliance with the modular approval guidelines developed by the FCC will be provided.

The instructions will call attention to place the auxiliary label on an exterior surface of the device such that it will be visible upon inspection.

The auxiliary label will have at least the information shown in the figure below

This device contains FCC ID:PVH0926 IC:5325A-0926
