

	Produktspezifikation RAD-ISM-2400-ANT-PAN-8-0 28 67 610	Blatt 4 von 7
--	--	------------------

5 Anhänge

5.1 Anhang A



SUHNER® PLANAR ANTENNA FOR WIRELESS COMMUNICATION

SPA 2400/75/8/0/V

Technical Data

Electrical Properties

Frequency range	2300 - 2800 MHz
Impedance	50 Ω
VSWR	1.5
Polarization	linear, vertical
Gain	7.5 dBi
3 dB beamwidth horizontal	75°
3 dB beamwidth vertical	70°
Downtilt	0°
Front to back ratio	20 dB
Max. power	75 W (CW) at 25°C

Mechanical Properties

Dimensions	101 x 80 x 20 mm (3.97" x 3.15" x 0.79")
Weight	0.13 kg (0.29 lbs.)
Radome material	ASA
Radome color	RAL 7035 (light-grey)
Operating temperature range	- 40°C to + 80°C
Storage temperature range	- 40°C to + 80°C
Windload	15 N at 160km/h (100mph)

Available Types

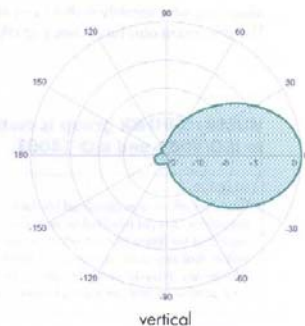
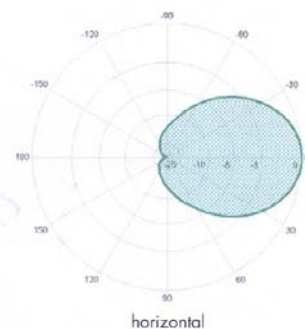
Article no.	
1324.19.0032	23019483 SMA female
1324.26.0024	23002469 TNC female
1324.99.0007	23003467 TNC female reverse pictail (0.3m)

Mounting Hardware

Most mounting material (1 metal bands) included, mast diameter
40-60 mm (1.57" - 2.36")



Radiation Pattern



Ersteller: Hakemeyer	Revision: 00	
Datum: 10.09.03	Datum: 10.09.03	Datum: 01.10.2003

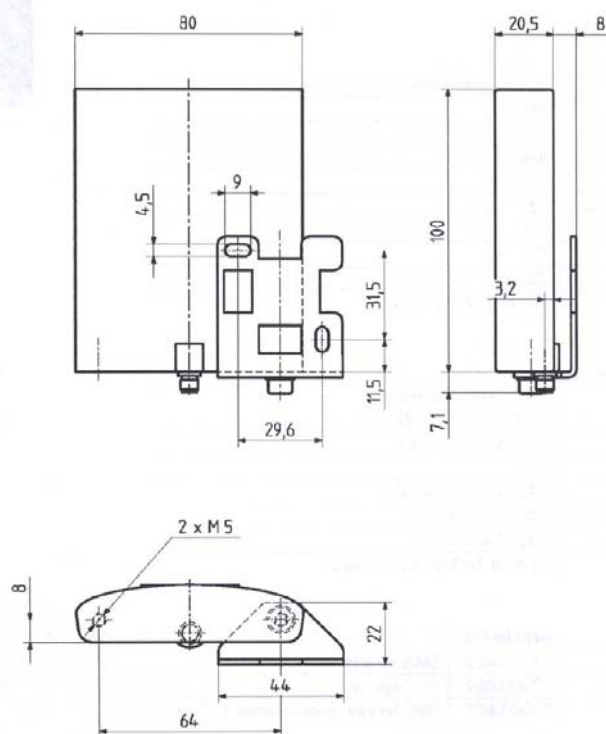
	Produktspezifikation RAD-ISM-2400-ANT-PAN-8-0 28 67 610	Blatt 5 von 7
--	--	------------------



SUHNER® PLANAR ANTENNA FOR WIRELESS COMMUNICATION

SPA 2400/75/8/0/V

Dimensions (mm)



Mounting and security instructions see HUBER+SUHNER document number 01.02.0777.
The document can be ordered at HUBER+SUHNER AG, Switzerland.

HUBER+SUHNER group is certified according to ISO 9001 and ISO 14001.

WAIVER!

While the information contained has been carefully compiled to the best of our present knowledge, it is not intended as representation or warranty of any kind on our part regarding the fitness of the products concerned for any particular use or purpose and neither shall any statement contained herein be construed as a recommendation to infringe any industrial property rights or as a license to use any such rights. The fitness of each product for any particular purpose must be checked beforehand with our specialists.

Document no.: 01.02.0864
Issue no.: 2
Supersedes: 09.2002

Uncontrolled Copy

Issued/Checked/Released:
Last amended:



HUBER+SUHNER AG
Wired Solutions + Networks
Communication + Power Networks
CH-9100 Herisau, Switzerland
Tel.: +41 (0)71 353 41 11
Fax: +41 (0)71 353 47 51
www.hubersuhner.com

4159/4174/09.2002
4159



Ersteller: Hakemeyer Datum: 10.09.03	Revision: 00 Datum: 10.09.03	Datum: 01.10.2003
---	---------------------------------	-------------------

Produktspezifikation RAD-PIG-EF316-MCX-SMA 28 67 678		Blatt 4 von 6
---	--	------------------

5 Anhänge

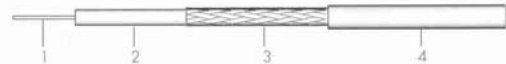
5.1 Anhang A

Teflon®-Koaxial-Kabel 50 Ohm

Allgemeine technische Daten:

Impedanz	50 Ω
Kapazität PTFE	94 pF/m
Kapazität PFA / FEP	96 pF/m
Signalfortpflanzungsgeschw. PTFE	71 % der Lichtgeschwindigkeit
Signallaufzeit PTFE	4.7 ns/m
Signalfortpflanzungsgeschw. PFA / FEP	69 % der Lichtgeschwindigkeit
Signallaufzeit PFA / FEP	4.8 ns/m
Isolationswiderstand	>10 ⁸ MΩ m
Min. Biegeradius statisch	5 x Ø
Min. Biegeradius dynamisch	15 x Ø
Temperaturbereich	-100°C bis +260°C (+200°C FEP)

Einfach geschirmte Kabel Single screened cables

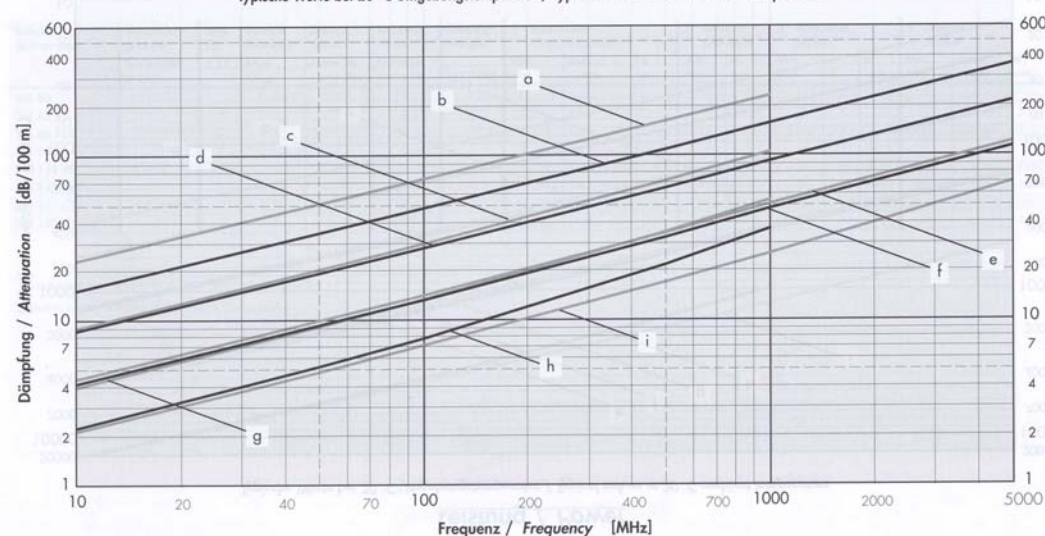


Suhner Typ Suhner type	Verbinde- gruppe Connector group	Imp. Tol. ± Ω	Betrieb Working kV _{eff} kV _{rms}	Dämpf. Atten. Kurve Nr. Curve No.	Leistung Power Kurve Nr. Curve No.	Gewicht Weight kg/100m	1 Innenleiter Centre conductor			2 Dielekt. Dielectric			3 Abschirm. Screen			4 Mantel Jacket		
							Mat. Mat.	Aufbau Constr.	ø mm	Mat. Mat.	ø mm	Mat. Mat.	%	ø mm	Mat. Mat.	Farbe Colour	ø mm	
K 01152-07	U1/k	5	0.4	C4 a	C5 a	0.4	CuAg	Litze/strand	0.19	PFA	0.52	CuAg	87	0.9	PFA	ws/wh	1.2	
RG 178 B/U	U1	2	1.0	C4 b	C5 b	0.8	SiCuAg	Litze/strand	0.30	PTFE	0.83	CuAg	96	1.3	FEP	br / br	1.8	
RG 196 A/U	U1	2	0.5	C4 b	C5 b	0.9	SiCuAg	Litze/strand	0.30	PTFE	0.83	CuAg	96	1.3	PFA	ws/wh	1.95	
RG 188 A/U	U2	2	0.8	C4 d	C5 d	1.7	SiCuAg	Litze/strand	0.54	PTFE	1.54	CuAg	95	2.0	PFA	ws/wh	2.6	
RG 188 A/U-01	U2	2	1.4	C4 c	C5 c	1.6	SiCuAg	Litze/strand	0.54	FEP	1.50	CuAg	96	2.0	FEP	br / br	2.5	
RG 316 /U	U2	2	0.9	C4 d	C5 d	1.6	SiCuAg	Litze/strand	0.54	PTFE	1.54	CuAg	95	2.0	FEP	br / br	2.5	
RG 316 /U-08	U2	2	0.9	C4 d	C5 d	1.6	SiCuAg	Litze/strand	0.54	PTFE	1.54	CuAg	95	2.0	FEP	sw / bk	2.5	
RG 316 /U-09	U2	2	0.9	C4 d	C5 d	1.6	SiCuAg	Litze/strand	0.54	PTFE	1.54	CuAg	95	2.0	FEP	rt / rd	2.5	
RG 316 /U-10	U2	2	0.9	C4 d	C5 d	1.6	SiCuAg	Litze/strand	0.54	PTFE	1.54	CuAg	95	2.0	FEP	ws/wh	2.5	
RG 141 A/U	U7	2	1.7	C4 f	C5 f	4.5	SiCuAg	Draht/wire	0.95	PTFE	2.95	CuAg	96	3.6	GSI	br / br	4.4	
RG 303 /U	U7	2	2.5	C4 f	C5 f	4.5	SiCuAg	Draht/wire	0.95	PTFE	2.95	CuAg	96	3.6	FEP	br / br	4.3	
K 07252	*	2	6.7	C4 h	C5 h	19.4	CuAg	Litze/strand	2.46	FEP	7.25	CuAg	97	8.1	FEP	sw / bk	9.1	
RG 165 /U	U28	2	4.1	C4 i	C5 i	20.4	CuAg	Litze/strand	2.46	PFA	7.25	CuAg	95	8.0	GSI	br / br	10.4	

* Verbindet auf Anfrage / Connectors on request

Dämpfung / Attenuation

Typische Werte bei 20 °C Umgebungstemperatur / Typical values at 20 °C ambient temperature

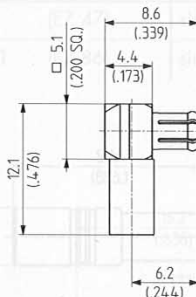


Ersteller: Hakemeyer	Revision: 00	Datum: 01.10.2003
Datum: 16.09.03	Datum: 16.09.03	

Produktspezifikation RAD-PIG-EF316-MCX-SMA 28 67 678		Blatt 5 von 6
---	--	------------------

5.2 Anhang B

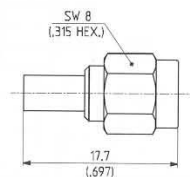
- > for flexible cables
- > cable entry crimp
- > centre contact soldered
- > taper sleeves see page 411



SUHNER TYPE	Article No.	Cable Group (example)	Packaging	Plating Body	Assembly Instruction	Crimp Insert
16 MCX-50-1-7 / 111 NH	23000443	U1 (EF 178)	bulk 100 pcs.	gold	27319	A
16 MCX-50-1-7 / 133 NH	22658308	U1 (EF 178)	bulk 100 pcs.	SUCOPLATE®	27319	A
16 MCX-50-2-11 / 111 NH	23000457	U4 (EF 316 D)	bulk 100 pcs.	gold	27102	A
16 MCX-50-2-11 / 133 NH	22650803	U4 (EF 316 D)	bulk 100 pcs.	SUCOPLATE®	27102	A
16 MCX-50-2-14 / 111 NH	23000445	U2 (EF 316)	bulk 100 pcs.	gold	27102	A
16 MCX-50-2-14 / 133 NH	22660001	U2 (EF 316)	bulk 100 pcs.	SUCOPLATE®	27102	A

5.3 Anhang C

- > for flexible cables
- > cable entry crimp
- > centre contact soldered
- > taper sleeves see page 411



SUHNER TYPE	Article No.	Cable Group (example)	Packaging	Plating Body	Assembly Instruction	Crimp Insert
11 SMA-50-1-4 / 111 NE	22645871	U1 (RG 178 B/U)	single	gold	27061	A
11 SMA-50-2-5 / 111 NH	22646312	U2 (RG 316/U)	bulk 100 pcs.	gold	27266	A
11 SMA-50-2-6 / 111 NH	22650740	U4 (K 02252 D)	bulk 100 pcs.	gold	27266	A
11 SMA-50-2-27 / 111 NH	22652923	U2 (RG 316/U)	bulk 100 pcs.	gold	27164	1 A 1)
11 SMA-50-2-41 / 133 NH	22652160	U4 (K 02252 D)	bulk 100 pcs.	SUCOPLATE®2)	3069	A
11 SMA-50-2-42 / 133 NH	22648783	U2 (RG 316/U)	bulk 100 pcs.	SUCOPLATE®2)	27266	A
11 SMA-50-2-55 / 199 NE	22641377	U2 (RG 316/U)	single	stainless steel	3069	A
11 SMA-50-2-56 / 199 NH	22651486	U4 (K 02252 D)	bulk 100 pcs.	stainless steel	3069	A

1) SUHNER® full crimp

2) use torque wrench 74 Z-0-0-79

Ersteller: Hakemeyer	Revision: 00	Datum: 01.10.2003
Datum: 16.09.03	Datum: 16.09.03	