

EF3P3UF/OF3UB HARDWARE AND SOFTWARE USER MANUAL



(This manual is written based on Windows 2000 Professional operating system)

FCC Information

This equipment has been tested and found to comply with limits for a class B digital device, pursuant to Part 15 of the FCC Rules. These limits are designed to provide reasonable protection against harmful interference in a residential installation.

This equipment can generate, use, and radiate radio frequency energy and, if not installed

and used in accordance with the instructions, may cause harmful interference to radio Communications. However, there is no guarantee that interference will not occur in a particular

Installation.

If this equipment does cause unacceptable interference to radio and television reception, which can be determined by turning the equipment off and on, the user is encouraged to try to correct

the interference by one or more of the following measures.

- Reorient or relocate the receiving antenna.
- Increase the separation between the equipment and receiver.
- Connect the equipment into an outlet on a circuit different from that to which the Receiver is connected.
- Consult the dealer or an experienced Radio/TV technician for help.

Caution : Any changes or modifications in construction of this device which are not expressly approved by the party responsible for compliance could void the user's authority to operate the equipment.

This device complies with part 15 of the FCC rules.

Operation is subject to the following two conditions.

- 1) This device may not cause harmful interference.
- 2) This device must accept any interference received, including interference that may cause undesired operation.

Immanuel Electronics CO., LTD.

<http://www.iec.co.kr>

Copyright 2002, Immanuel Electronics Co., Ltd.

ALL RIGHTS RESERVED

Specifications subject to change without notice.

CONTENTS

Chapter 1. Product Specification

Chapter 2. Installation Overview

Chapter 3. How to Install EF3P3UF(OF3UB) Device Driver

Chapter 4. How to Install IZZIX FS1000 Program

1. Set Up Windows Users & Passwords

2. Install Program

Chapter 5. How to Use IZZIX FS1000

1. Register

2. Lock File

1) Menu Lock

A. Create Hidden Folder

B. Create Read-Only Folder

2) Click Lock

3. Set up Screen Saver

4. Logon

5. Lock Desktop

6. Set up IZZIX FS1000 Users & Passwords

7. Auto Scan

8. Close

9. Uninstal

Chapter 6. How to Use the Device

1. EF3P3UF / OF3UB

CHAPTER1. PRODUCT SPECIFICATION

1. Components

EF3P3UF (Fingerprint Identification Optical Wheel Mouse), OF3UB (Fingerprint Identification Security Device) , IZZIX FS1000 Program CD Program and User Manual

2. Applicable Environments

- One-User PC Environment

- Multi-User PC Environment

3. System Requirements

- Windows 98se/ME/2000/XP

- CPU Pentium 133MHz or higher

- 20MB or more Free Hard Disk Space

- 16MB or higher RAM

- USB Port

- CD-ROM Drive

This software does not operate in Windows 95/NT environment.

CHAPTER2. INSTALLATION OVERVIEW

Turn on the computer.

Plug in EF3P3UF or OF3UB to a USB port.

Plug & Play runs and asks to insert the installation CD.

Insert IZZIX installation CD into the CD-ROM drive and install the driver for EF3P3UF(OF3UB) using the Hardware Install Wizard.

Execute 'Setup.exe' file from IZZIX installation CD and install IZZIX FS1000 program.

The computer restarts automatically to complete the installation process.

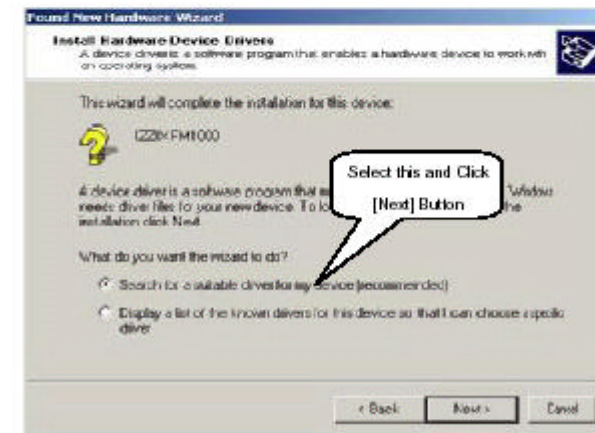
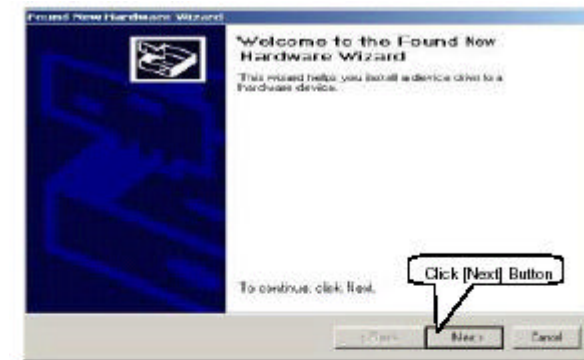
After restarting the computer, click IZZIX FS1000 tray icon to register as a new user.

The system mainboard must support USB and the USB port must be enabled in CMOS setup.

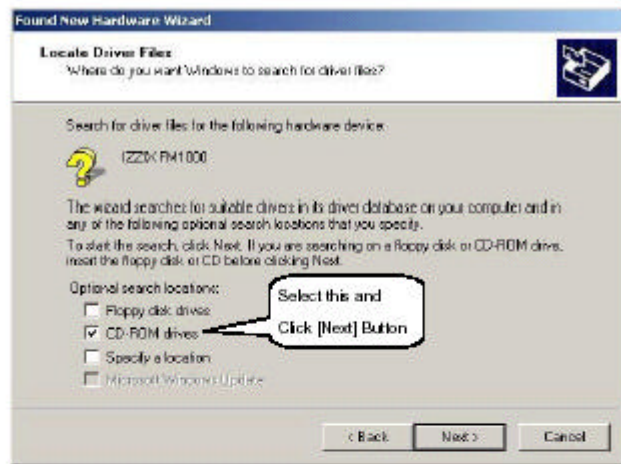
CHAPTER3. HOW TO INSTALL EF3P3UF DEVICE DRIVER

Since the installation process of EF3P3UF and OF3UB is similar, this manual only covers EF3P3UF.

Plug in EF3P3UF to a USB port and Plug & Play function automatically runs "Found New Hardware Wizard"

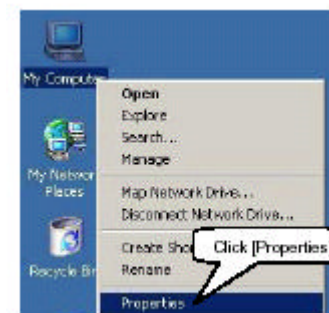
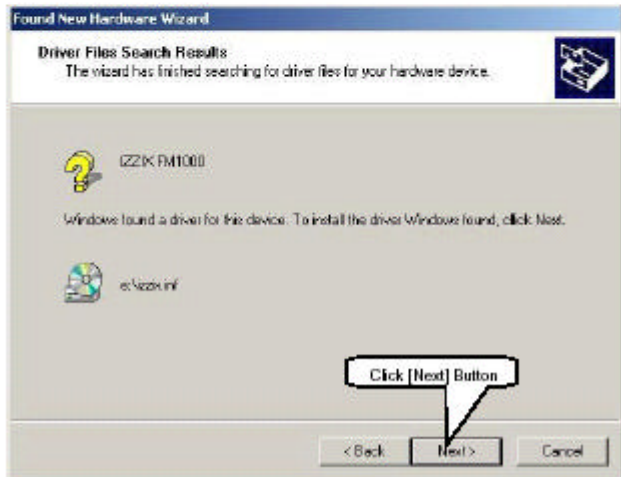


② Insert installation CD and execute as shown below.



Let's check if EF3P3UF driver is properly installed or not.

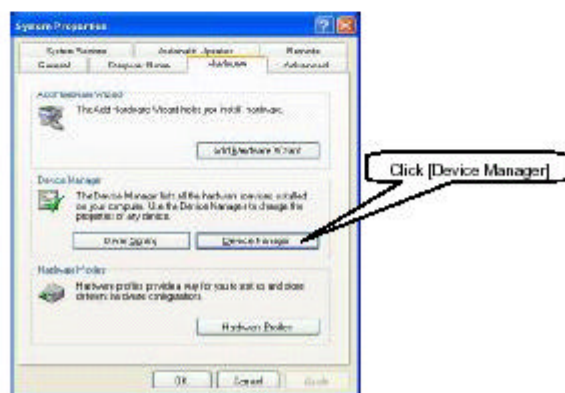
Right click [My Computer] on the Desktop to show the list shown below.



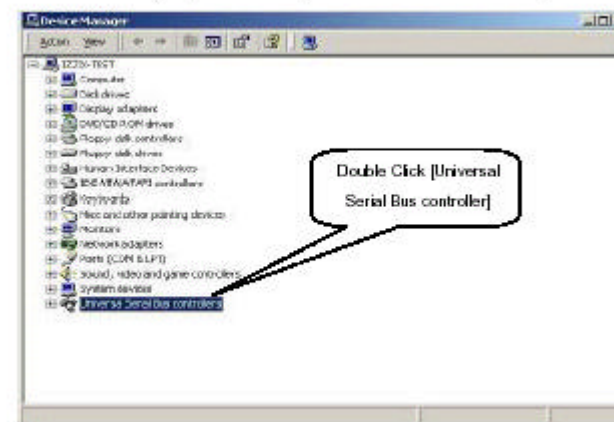
- ④ Go to [Hardware] tab and click [Device Manager].



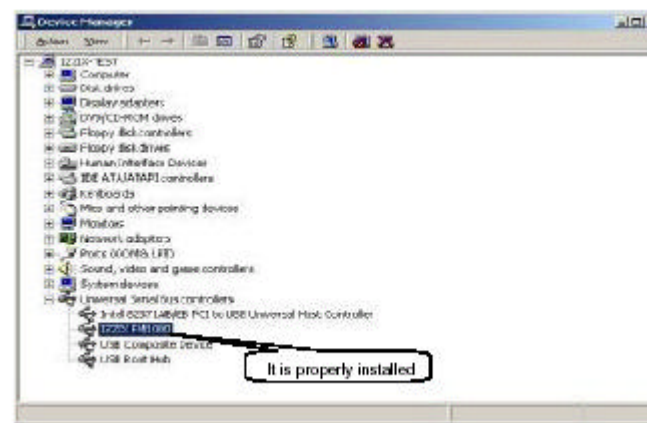
- The order for Windows 98 is [My Computer] • [Properties] • [Device Manager].
- The order for Windows XP is [My Computer] • [Properties] • [Hardware].



- ⑤ When another window opens, find and click [Universal Serial Bus controller].



Make sure that EF3P3UF is enlisted.



For fingerprint identification security device, it is enlisted as "OF3UB" in the USB category.

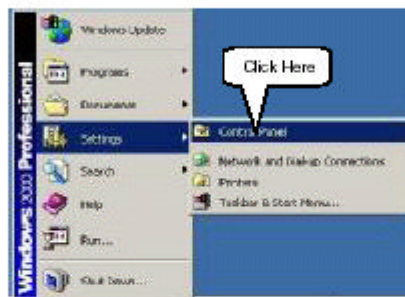
CHAPTER 4. HOW TO INSTALL IZZIX FS1000 PROGRAM

TIP!!!

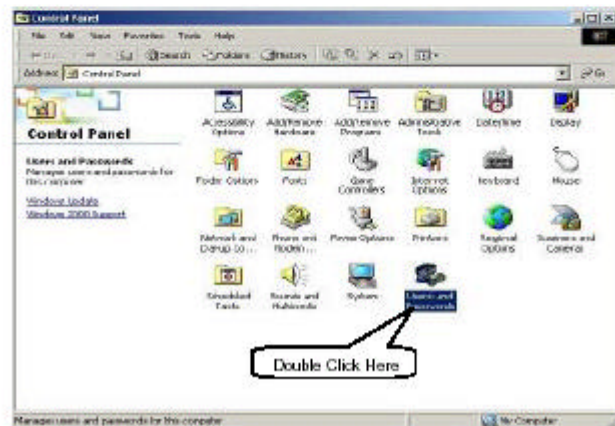
For Windows NT (ex. Windows2000 Pro, Server, etc.) or XP, LOGIN ID and PASSWORD must be registered if it is not registered, please do the following procedure. This is irrelevant to Windows 98se or Me.

1. Set Up Windows Users & Passwords

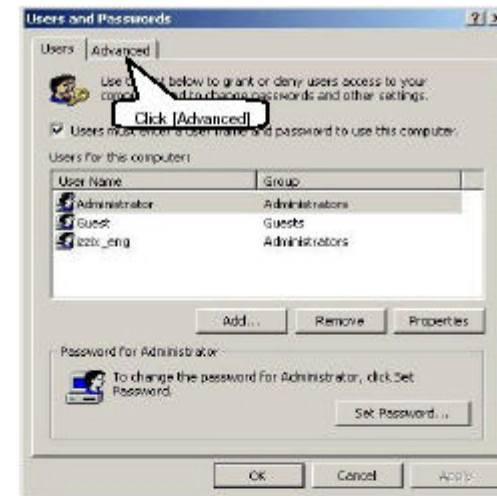
- ① Go to [Start] • [Settings] • [Control Panel].



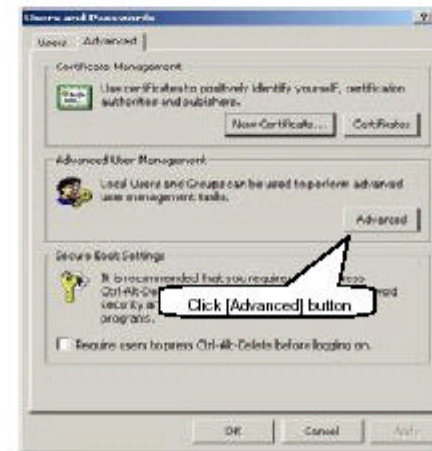
- ② When the [Control Panel] window opens up, click 'Users and Passwords'.



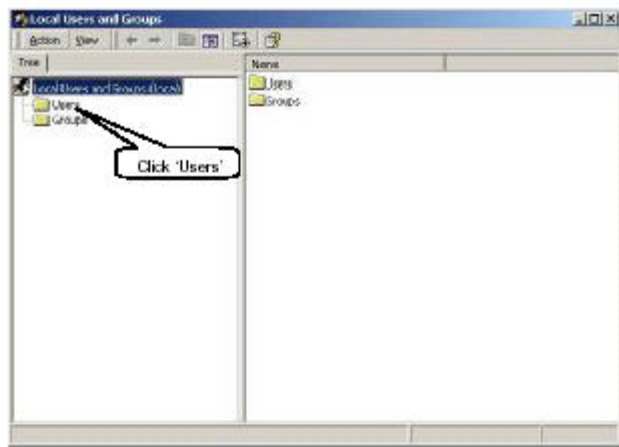
- ③ When another window pops up, click [Advanced] tab.



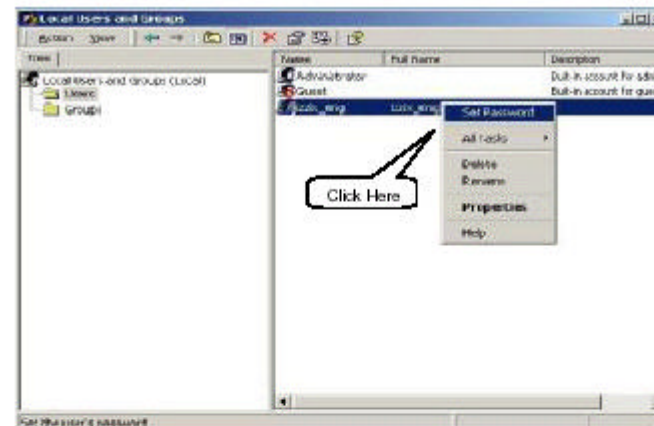
- ④ From [Advanced] tab, click [Advanced] button from 'Advanced User Management'.



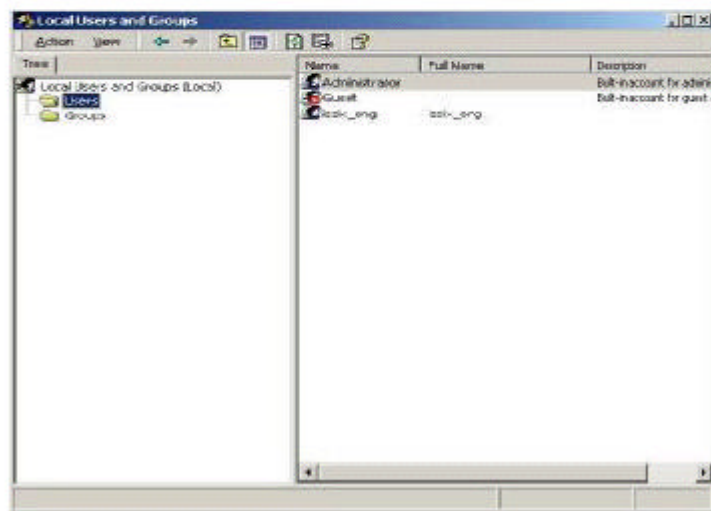
- ⑤ After [Local Users and Groups] window opens, click "Users" folder.



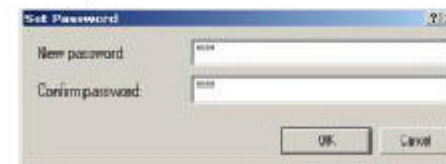
- ⑥ Right click on the currently logged on ID to show another list.



- ⑦ List of users appears on the right-hand side.

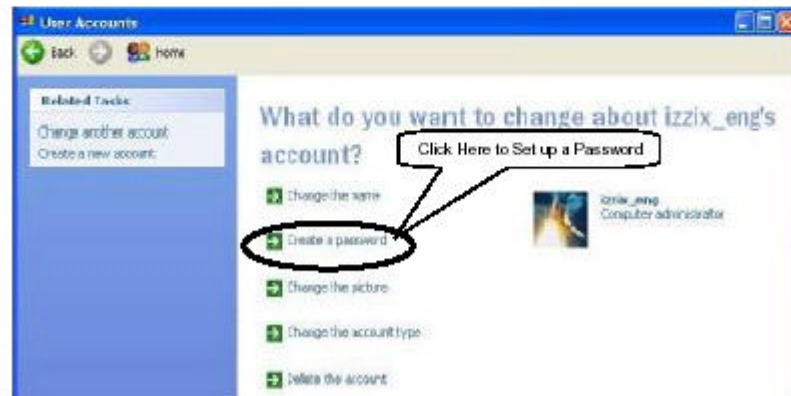
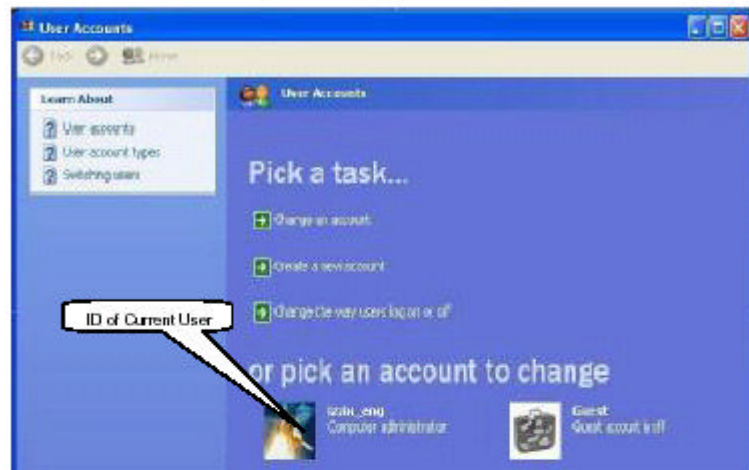


- ⑧ Enter in the PASSWORD of your choice.



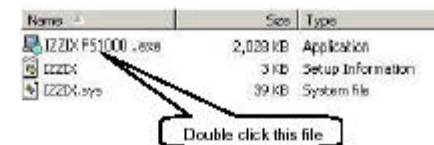
PASSWORD is needed to use as a password for IZZIX FS1000 later on. IZZIX FS 1000 does not take blank space as a password; so make sure to set up a password of your choice before you install the program.

□ The order for Windows XP is [Control Panel] • [User Accounts]



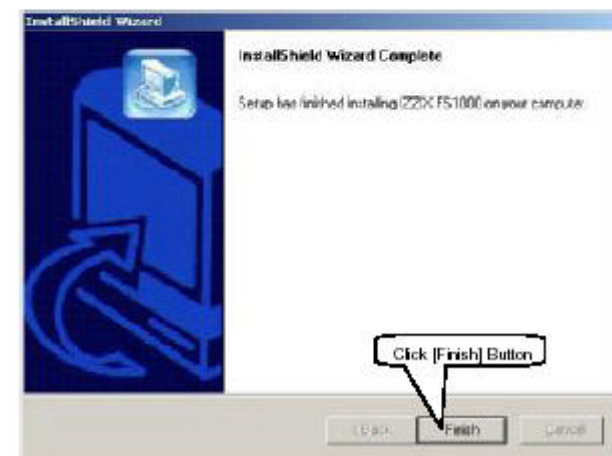
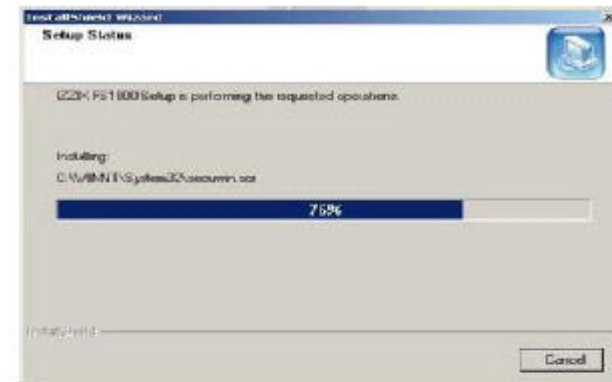
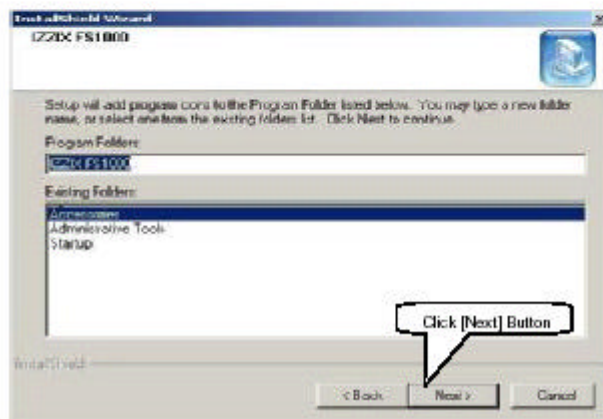
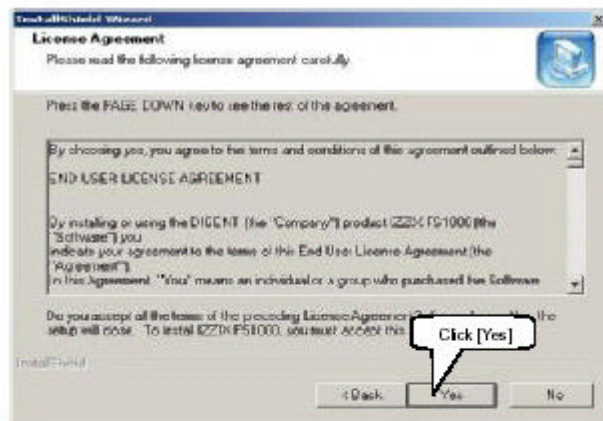
2. Install Program

① Open up program installation CD from the CD-ROM Drive.

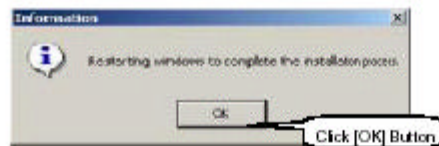


② Following window appears.

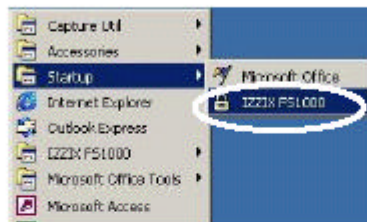




- ③ After following message shows up, the system will automatically restart.



- ④ After restarting the system, IZZIX FS1000 will appear in the Startup.

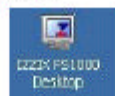


If IZZIX FS1000 is deleted from the list, it will appear again when you logon next time.
This means that the deletion of IZZIX FS1000 must go through proper un-installation

- ⑤ When the installation is completed, following icon appears on the bottom-right corner of the Desktop.



- ⑥ Following icon appears on the Desktop as well.



- This icon will be explained more in details in Chapter 5.

CHAPTER 5. HOW TO USE IZZIX FS1000

1. Register

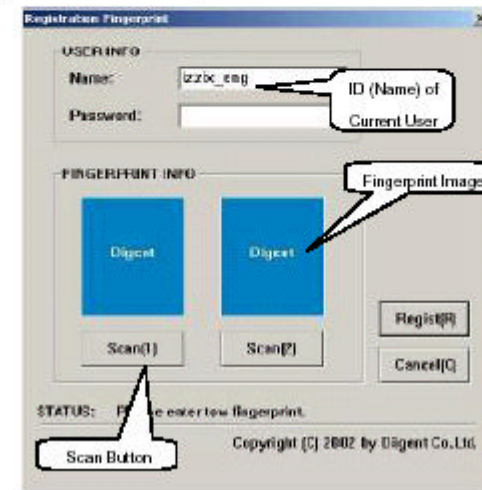
- ① Let's run IZZIX FS1000. Click tray icon located on the bottom-right corner of the Desktop.



- ② When running the program for the first time, the person who run the program will be registered as Administrator.

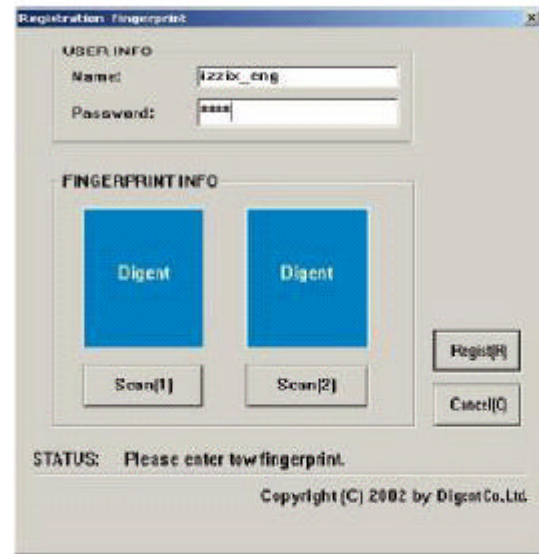
- Administrator in IZZIX FS1000 has a same authority as an Administrator in Windows.
- Every user, except Administrator, is considered to be a subordinate. Therefore, any Folder that are locked by a subordinate can be unlocked by the Administrator with his/her ID and fingerprint.

Registration process will be in following order:



- ③ Enter in the password, which you used when you logon to the Windows.

If the password you enter in is different from one for Windows, you will not be able to LOGIN or release the SCREENSAVER in the future, so please be careful.

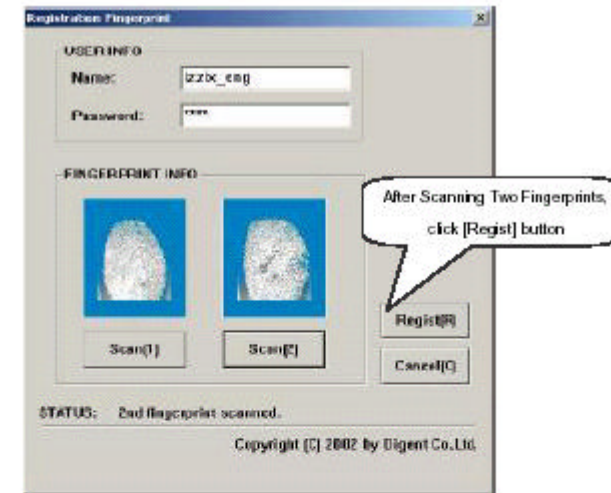


- ④ Scan your fingerprint.

How to Scan

- Put one of your fingers on the fingerprint identification device, and click [Scan (1)] button.
- Put another finger of your choice on the device (can use the same finger) and click [Scan (2)] button.

※ It is recommended to scan different fingerprints for your convenience. (In case, the device cannot read your first fingerprint, you can use the second fingerprint to logon.)



- ⑤ After completing the registration process of IZIX FS1000, you will see following window.



⑤ [Security 1]

- ▢ [Security 1] is to monitor possible virus intrusion from the external environment.
- ▢ It examines filename and file type, and if there is a possibility of virus intrusion, the program sends out a warning message.

[Binary File]

- ▢ This is to warn the user when binary files such as *.com or *.exe files attempt to approach the system. As the level number decreases, the security level gets tighter.
- ▢ Default level is currently set up as 'Level 1- Infector'

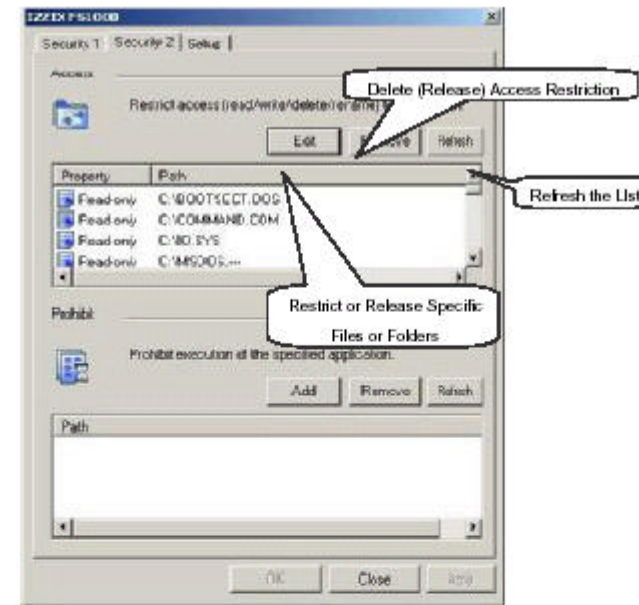
Level	Description
Level 0 Unknown	Highest level of security. Restrict all incoming binary files. Send out warning message when there is an attempt to access.
Level 1 Infector	Default level. Send out warning message where the filename of the incoming file matches with that of virus infector. Virus scanning recommended.
Level 2 Extension	Send out warning message where the extension of the incoming file matches with that of virus. Virus scanning recommended.
Level 3 Filename	Send out warning message where the filename of the incoming file matches with that of virus. Virus scanning recommended.
Level 4 Path	Send out warning message where the path and filename of the incoming file match with that of virus. Virus scanning recommended.
Level 5 Process	Send out warning message where the process, path and filename of the incoming file match with that of virus. Can be considered as a 100% virus. Virus scanning recommended.

- ▢ Almost all binary file extensions are enlisted as a default; however, the user can add or delete new extension type.
- ▢ Except, deletion of default extension type is prohibited.
- ▢ If the security level is at 'Level 0 - Unknown' and try to install new program, it will be troublesome with many warning message. In this case, it will be convenient to change the security level to 'Level 1' and change back to 'Level 0' after completing the installation.
(Changing the security level also requires the user's fingerprint)

[Process]

- ▢ This is to allow access of specific binary files without prior consent.
- ▢ Specify the files, which you do not wish to go through the fingerprint authentication process.
- ▢ 'Rundll32', 'SECWIN.EXE', and 'EXPLORER.EXE' are not able to delete.

⑥ [Security 2]



- ※ After completing the installation, important systems files are assigned as either 'Read-Only' or 'Hidden' file as default.

[Access]

▢ Read-Only

You CAN only read (view) the corresponding files and folders, and NOT permitted to write/ edit/ rename/ delete/ move.

This function is suitable for data files

▢ System

You CAN read/ write, but CANNOT delete/ rename/ move the file.

For example, you should be allowed to read/ write on files that are used by Windows, but those files are protected from intentional/ unintentional deletion from the Windows Explorer.

This function is suitable for locking files(Ex. Windows Directory, System Directory).

□ Hidden

Hidden files/ folders are restricted in access, and prohibited to read/ write/ delete/ rename/ move.
It is possible to completely block any unauthorized access to specific programs or data files.

- ※ Similarly to [Security 1], after completing the installation, important systems files are assigned as 'System' file by default. These default files are impossible to delete.
- ※ If one file or folder has multiple attributes, the priority is as following:
READ-ONLY < SYSTEM < HIDDEN

[Prohibit]

This function is to prohibit the execution of specific program. If you add the program (*.exe, *.com), which you do not wish to be executed in the list, those programs will not be executed.

2. Lock File

There are two different methods to lock certain files/ folders

- ✓ Menu Lock : Lock files/ folders from IZZIX FS1000 Manager window.
- ✓ Click Lock : Lock files/ folders from [Windows Explorer] or [My Computer] by using right click button of mouse.

1) Menu Lock

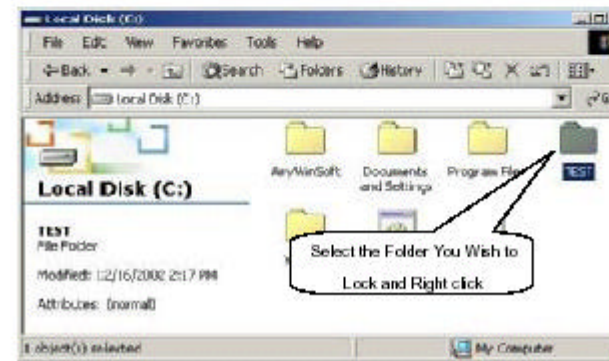
There are three ways to lock files/ folders (Hidden, Read-Only, System). This manual will only cover Hidden and Read-Only.

Lock File vs. Lock Folder

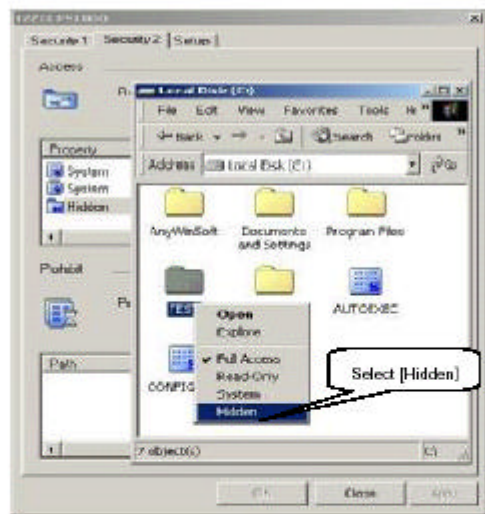
Lock file is only effective on one specific file; however, lock folder is effective on every subordinate folder and file. This means, if 'folder A' is in Read-Only state, rest of the files and folders in 'folder A' are also in Read-Only state. And you cannot create a new folder inside 'folder A'.

A. Create Hidden Folder

- ① After executing IZZIX FS1000, click [Edit] from [Security 2] tab in IZZIX FS1000 Manager window. 'IZZIX FS1000 Desktop' appears as shown below :



- ② Select a folder (or a file) you wish to lock, and right click. Then, following menu appears.
CAUTION: IZZIX FS1000 Manager window must be opened. (Otherwise, Read-Only, System, or Hidden will be inactive.)



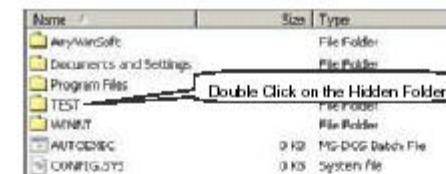
- ③ The icon changes as shown below.



This icon is only shown when the IZZIX FS1000 Manager window is open.

If you select 'Hidden', not only it restricts access, but also restricts reading.

- ④ Let's try to access the folder with IZZIX FS1000 closed.



- ⑤ If the file is properly Hidden, following warning message pops up.



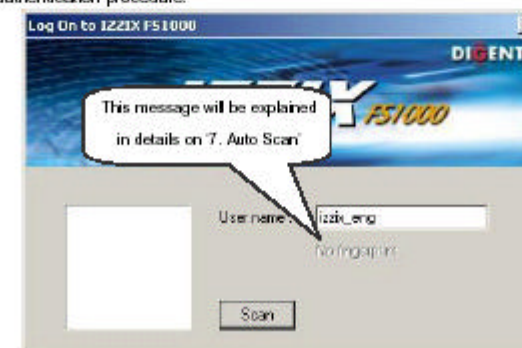
* If you are trying to access the file from Windows Explorer, the same warning message will appear.

- ⑥ If you want to open the Hidden file, click tray icon once.

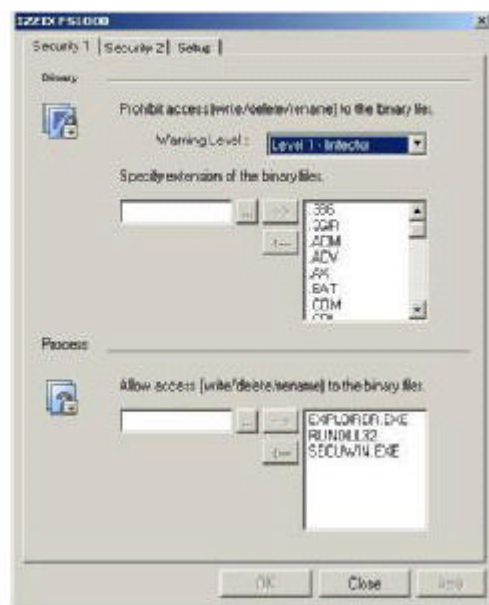
Click IZZIX FS1000
Tray icon



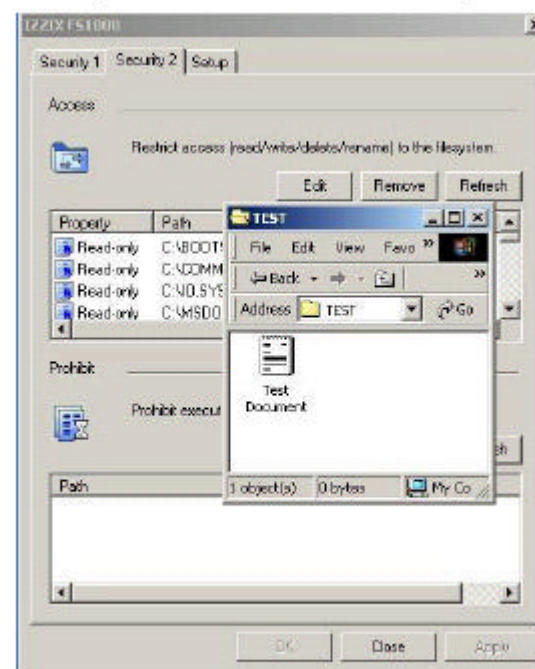
- ⑦ Follow the authentication procedure.



⑧ IZZIX FS1000 Manager window opens.

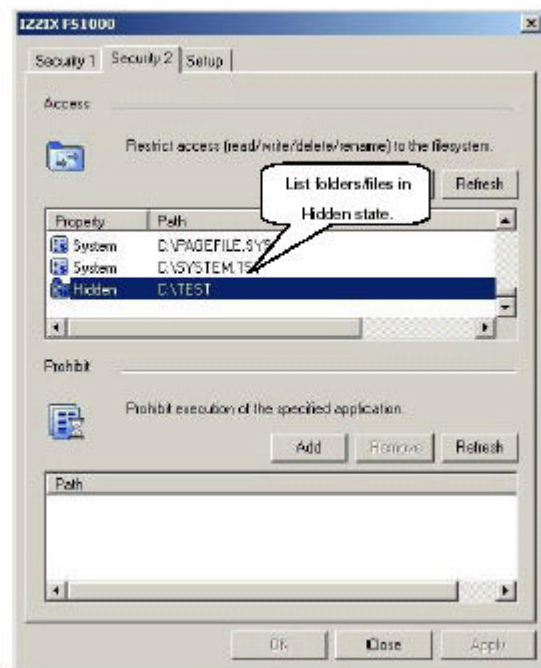


⑨ Try to access the very same Hidden folder, which IZZIX FS1000 Manager window is opened.



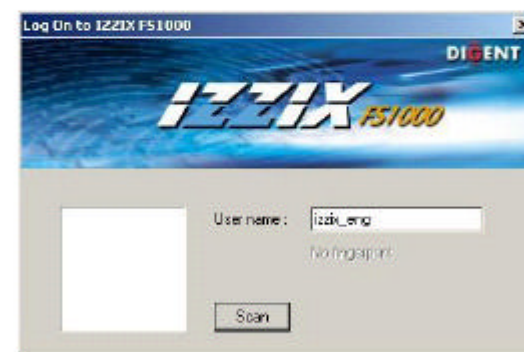
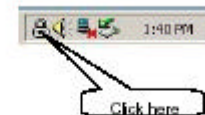
⑩ You can view the folder (or file) without any restraint.

- ② As seen on the [Security 2] in the IZZIX FS1000 Manager, the state of the folder is 'Hidden'.



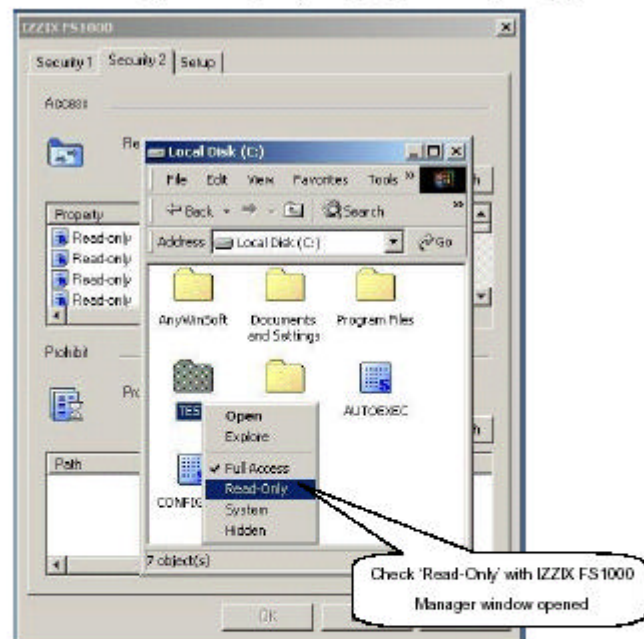
B. Create Read-Only Folder

- ① Create a temporary text file in any folder.
- ② Click tray icon on the bottom-right corner, and scan your fingerprint.



- ③ Put your finger on the fingerprint identification device and click [Scan] button.

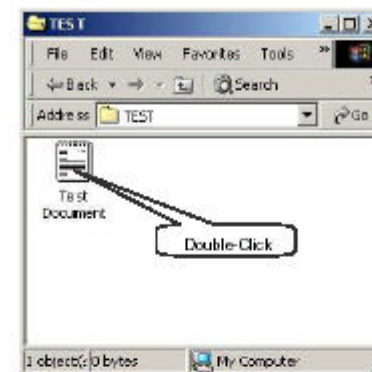
- ④ After IZZIX FS1000 Manager window opens up, click [Edit] button from [Security 2] tab.



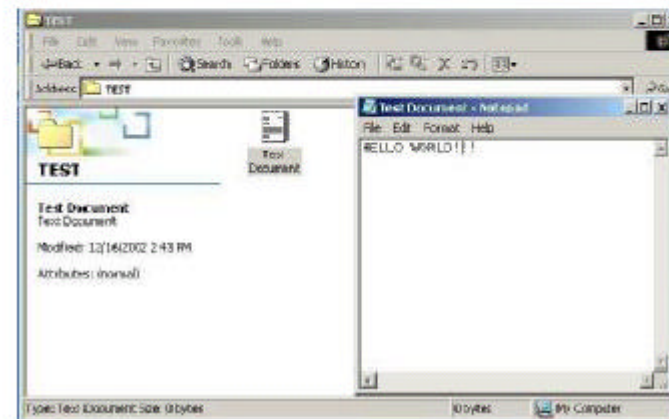
- ④ Close IZZIX FS1000 window, and let's try to access the locked file.

Name	Size	Type
AnyWinSoft		File Folder
Documents and Settings		File Folder
Program Files		File Folder
TEST		File Folder
WINNT		File Folder
AUTOEXEC	0 KB	MS-DOS Batch File
CONFIG.SYS	0 KB	System File

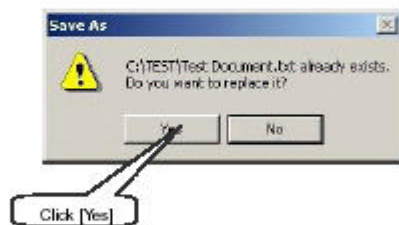
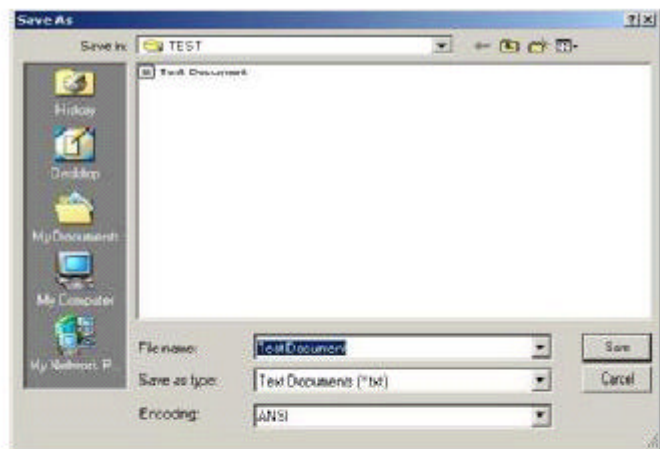
- ⑤ In the folder that you created,



- ⑤ Type in 'HELLO WORLD!!!'.



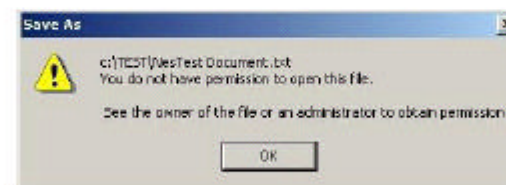
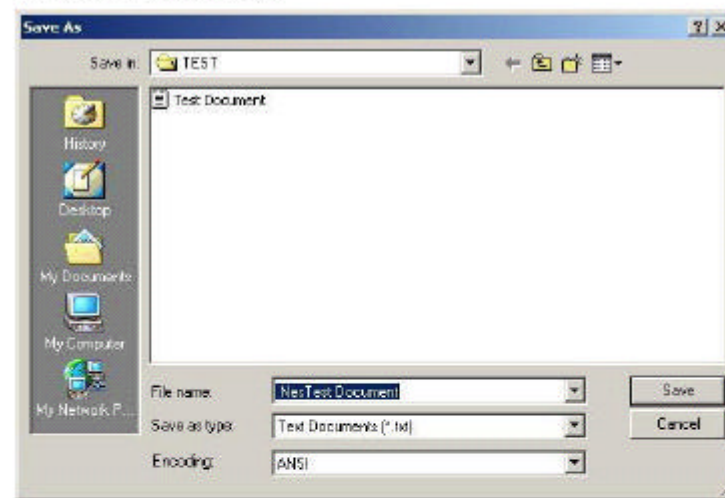
- ⑦ Click [Save], and following [Save As] window will appear:



A warning message appears as shown below.



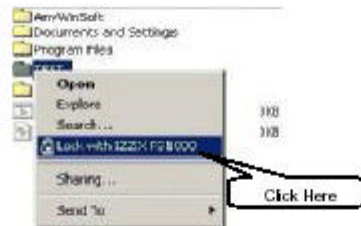
- ⑧ Even if trying to save the file with a new name, you will see a warning message as shown below, and will not be able to create a file.



- ⑨ If you want to save or create a new file,
- Run IZZIX FS1000.
 - Scan your fingerprint to log on.
 - Click [Edit] button from [Security 2] and change the file to [Read-Only] state, or save the file while IZZIX FS1000 is opened.
- ❖ OR it is possible to save the locked file by changing the path (save the file in different folder).
- ❖ Read-Only files can be saved under different filename.

2) Click Lock

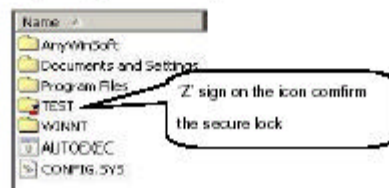
- ① Right click on the folder (or the file) you want to open and select 'Lock with IZZIX FS1000'.



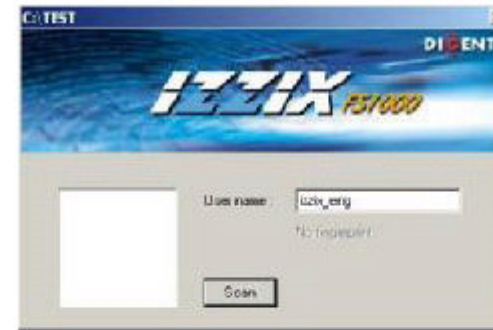
- ② Scan your fingerprint.



- ③ The picture of icon changes as you see on the picture below.



- ④ Double-click on the locked folder, and the following login window will appear.



- ⑤ Put your finger on the Fingerprint Identification Device and click [Scan] button to view the folder.

- ⑥ To unlock, right click on the folder you want to unlock.



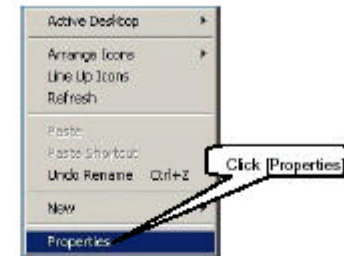
TIP! Click Lock vs. Menu Lock

	Click Lock	Menu Lock
Merit	<ul style="list-style-type: none"> Simple Locking/Unlocking procedure (IZZIX FS1000 logon is not required) Fast process (Within 2 sec) Possible to lock many files/folders with just one-click. 	<ul style="list-style-type: none"> Complete Lock (impossible to access without logging on IZZIX FS1000) Offers three different states (Hidden, System, Read-Only) Deletion is impossible
Demerit	<ul style="list-style-type: none"> Require authentication if you leave the file idle for more than 5 seconds. Require authentication to even access the folder with locked file in it. Deletion is possible 	<ul style="list-style-type: none"> Locking/Unlocking process takes more time and efforts than Click Lock.

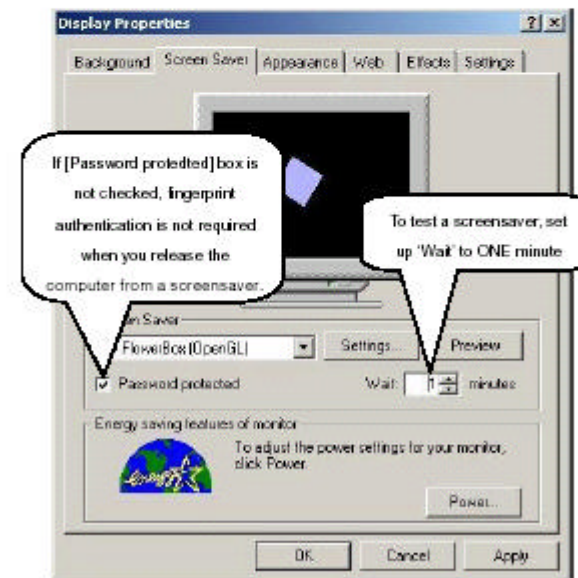
- Overlay icon does not appear if you lock icons (including shortcuts) that are on the Desktop.
- Unable to lock shortcuts on the Desktop that are not connected directly to the binary file. (Ex: MS Office Product, etc.) Check 'Target' in shortcut properties.
- Unable to lock Virtual Folders such as [My Computer] or [My Documents]

3. Set up Screen Saver

① Right click on the Desktop



② Go to [Screen Saver] in the 'Display Properties'

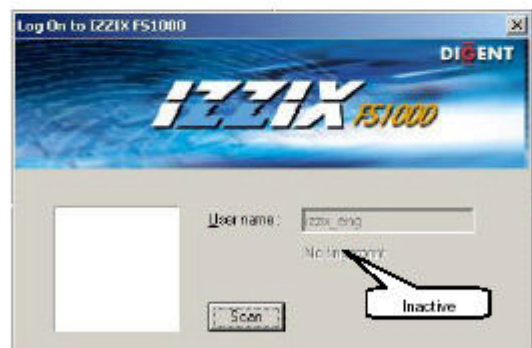


Click [Apply] and [OK] button respectively.

- ③ Wait until a screensaver is active.



- ④ Logon window pops up if you press any key or move your mouse.

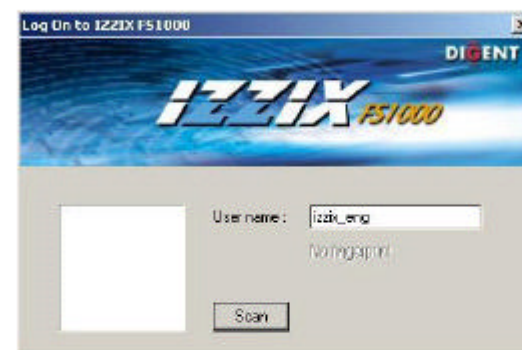


- Password protection WILL NOT BE active until screensaver has runs for minimum of five seconds.
- May need to press Ctrl + Alt + Del, depending on Windows version.

- ⑤ Scan your fingerprint to release the screensaver.

4. Logon

- ① Logon after installation and registration of IZZIX FS1000 requires fingerprint authentication. (Except Windows 98se/ ME)
- ② After booting your computer, following window pops up to scan your fingerprint.



- ⚠ This logon window will appear even when you try to logon as a different user.

CAUTION!!

Any new user must set up a password from Windows 'Users & Passwords' and register as a new user in IZZIX FS1000.

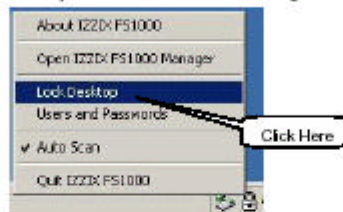
Windows 'Users & Passwords'

- Microsoft Windows 98/ ME does not require ID or password to log on, but Microsoft Windows 2000/XP requires ID and password to log on.
- For more information about ID and password, refer to Chapter 4. How to Install IZZIX FS1000 Program

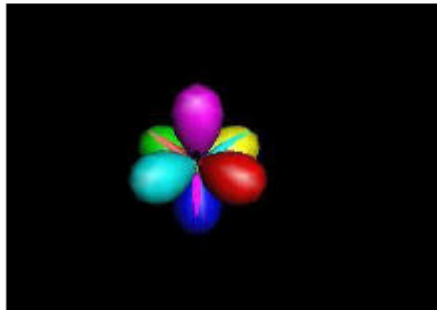
5. Lock Desktop

'Lock Desktop' is to protect your computer from unauthorized person when you leave the computer for a long period of time. To release the lock, fingerprint authentication is required.

- ① Right click on the IZZIX FS1000 tray icon located on the bottom-right corner of your Desktop.



- ② A screensaver will be active if the computer is locked properly.



- ③ Logon window pops up to release the lock, if you press any key or move your mouse.

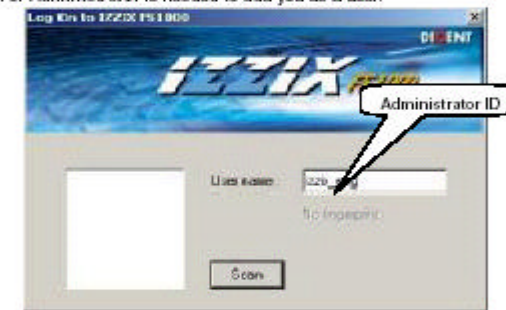
6. Set up IZZIX FS1000 Users & Passwords

Only Administrator has the authority to add new user.

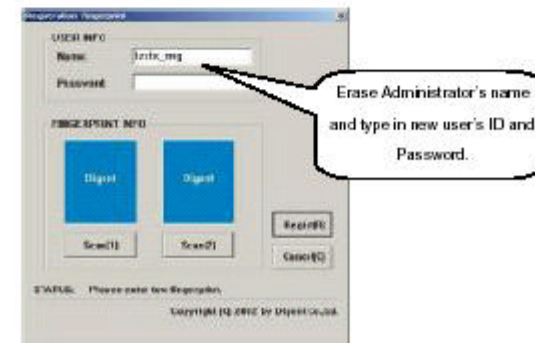
- ① Right click on IZZIX FS1000 tray icon located on the bottom-right corner of your Desktop.



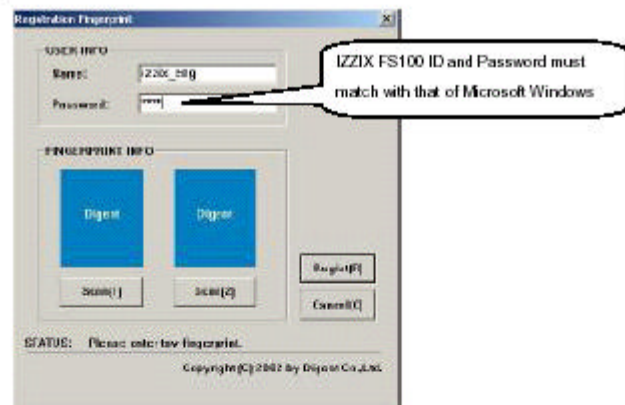
- ② Authentication of Administrator is needed to add you as a user.



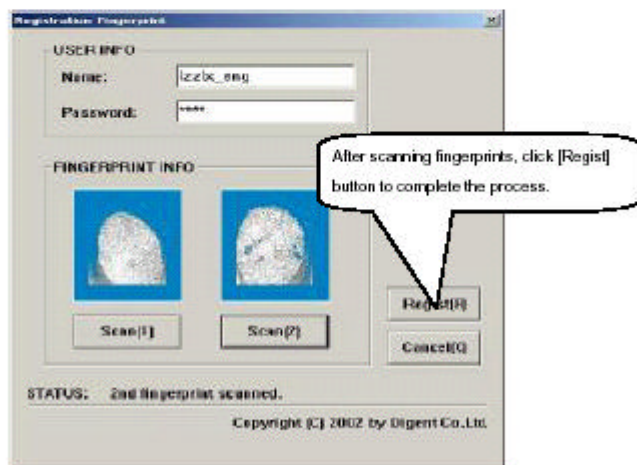
- ③ After Administrator log on to IZZIS FS1000, following registration window opens up.



④ Type in your information as shown below.



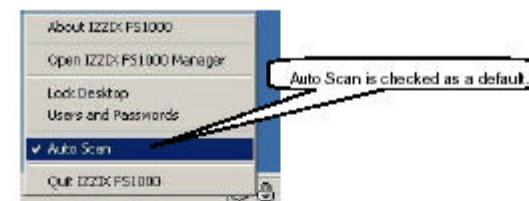
⑤ Scan your fingerprints.



DON'T FORGET that even if a new user is in Administrator level in Windows system, he/she is in subordinate group of IZZIX FS1000.

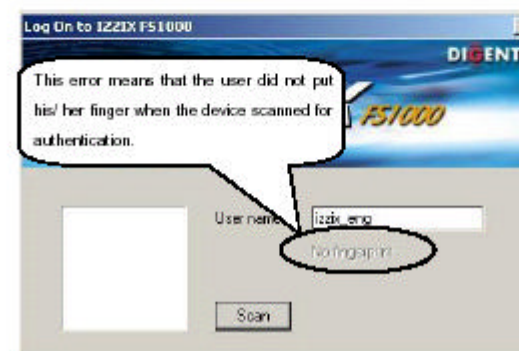
7. Auto Scan

① Right click on IZZIX FS1000 tray icon.



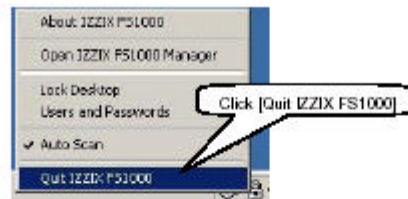
Auto Scan is

- When there is a need to authenticate user (ex. Lock/ Unlock files), the user does not have to go through logon window.
- In other words, the fingerprint identification device automatically scans the finger once, whenever the device needs to scan the fingerprint. At that time, if the user already has the finger on the device, the user will log on to IZZIX FS1000 without seeing the logon window.

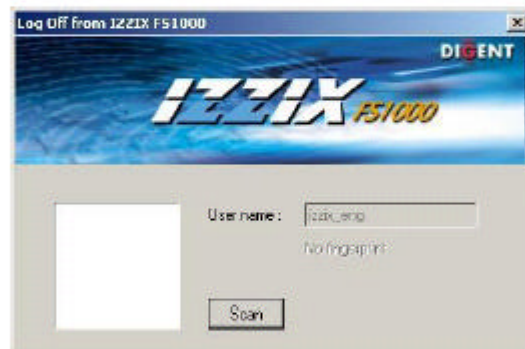


8. Close

- ① Right click on IZZIX FS1000 tray icon located on the bottom-right corner of your Desktop



- ② Scan your fingerprint to close IZZIX FS1000.



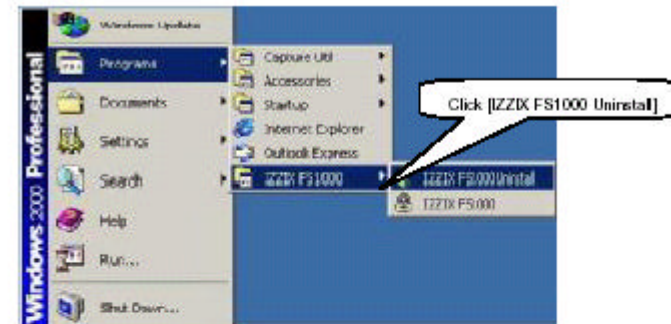
TIP!!

Even if IZZIX FS1000 is closed, after certain period of time, the program runs again automatically to heighten the security.

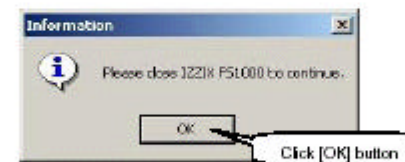
- The IZZIX FS1000 has auto internal check function to check if the program is currently closed.
- In case of event such as starting a program, IZZIX FS1000 will check the status and automatically restart if it's closed.

9. Uninstall

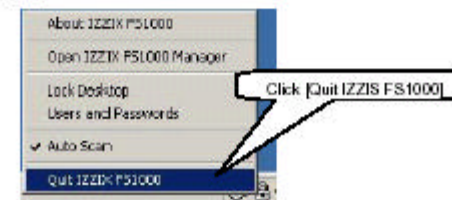
- ① Click in the following order: [Start] • [Programs] • [IZZIX FS1000] • [IZZIX FS1000 Uninstall].



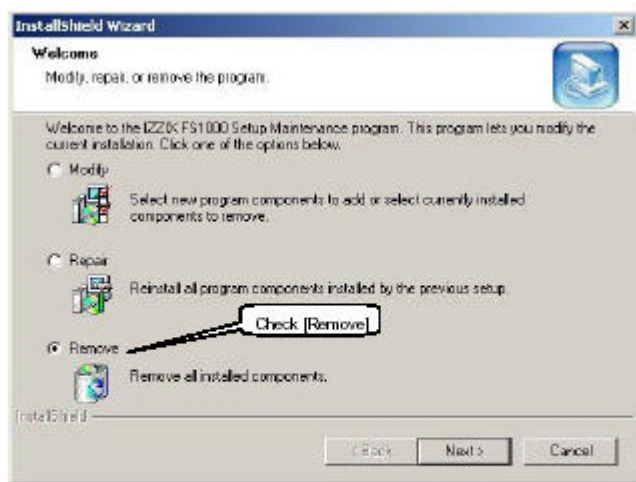
- ② Once the uninstallation process starts, following message pops up.



- ③ Close IZZIX FS1000 program.



- ④ Continue with uninstallation.



- ⑤ Click [Next] button and the program will be completely uninstalled. Then, Windows system will restart.

CHAPTER 6. HOW TO USE THE DEVICE

1. EF3P3UF / OF3UB

Watch closely on your fingerprint to find WHIRLPOOL shape. This is the CORE of your fingerprint.

Try to put the core on the center of the image sensor.

