

FIGURE 3
DUAL MODE TUNABLE WHITE A19 (M/N: CLEDA199SD1)
MAIN BOARD (COMPONENT SIDE)

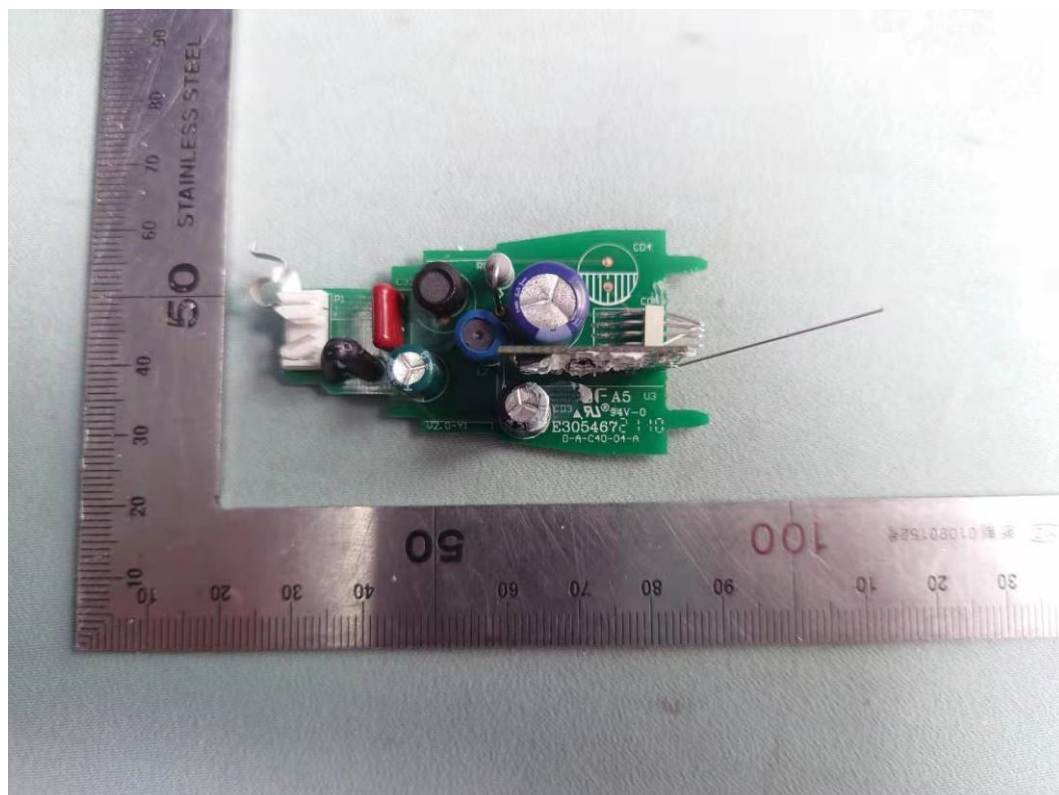


FIGURE 4
DUAL MODE TUNABLE WHITE A19 (M/N: CLEDA199SD1)
MAIN BOARD (SOLDERED SIDE)

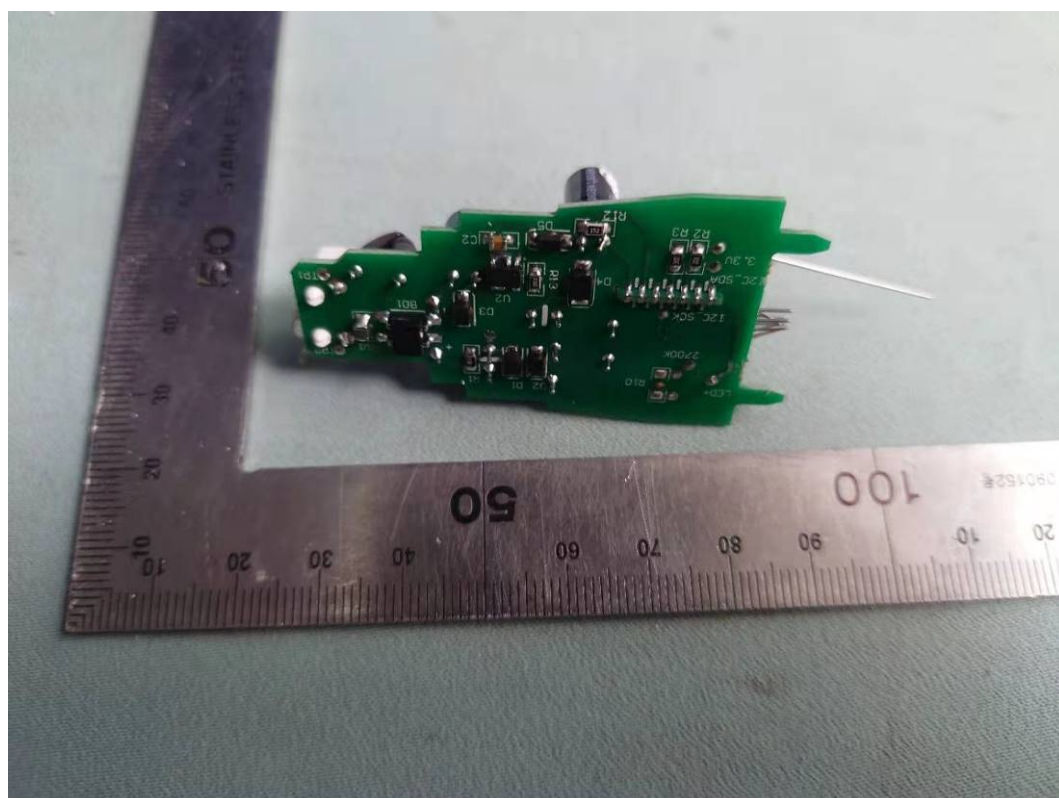


FIGURE 5
DUAL MODE TUNABLE WHITE A19 (M/N: CLEDA199SD1)
RF BOARD LOCATED (GENERAL SIDE)

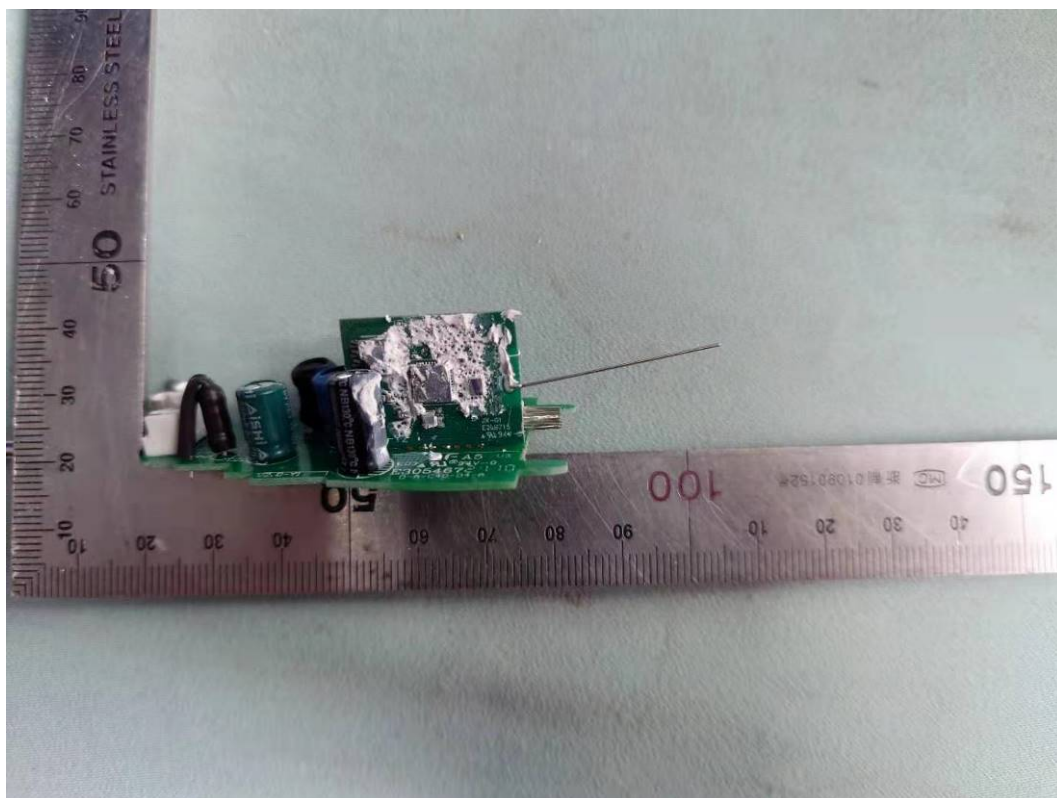
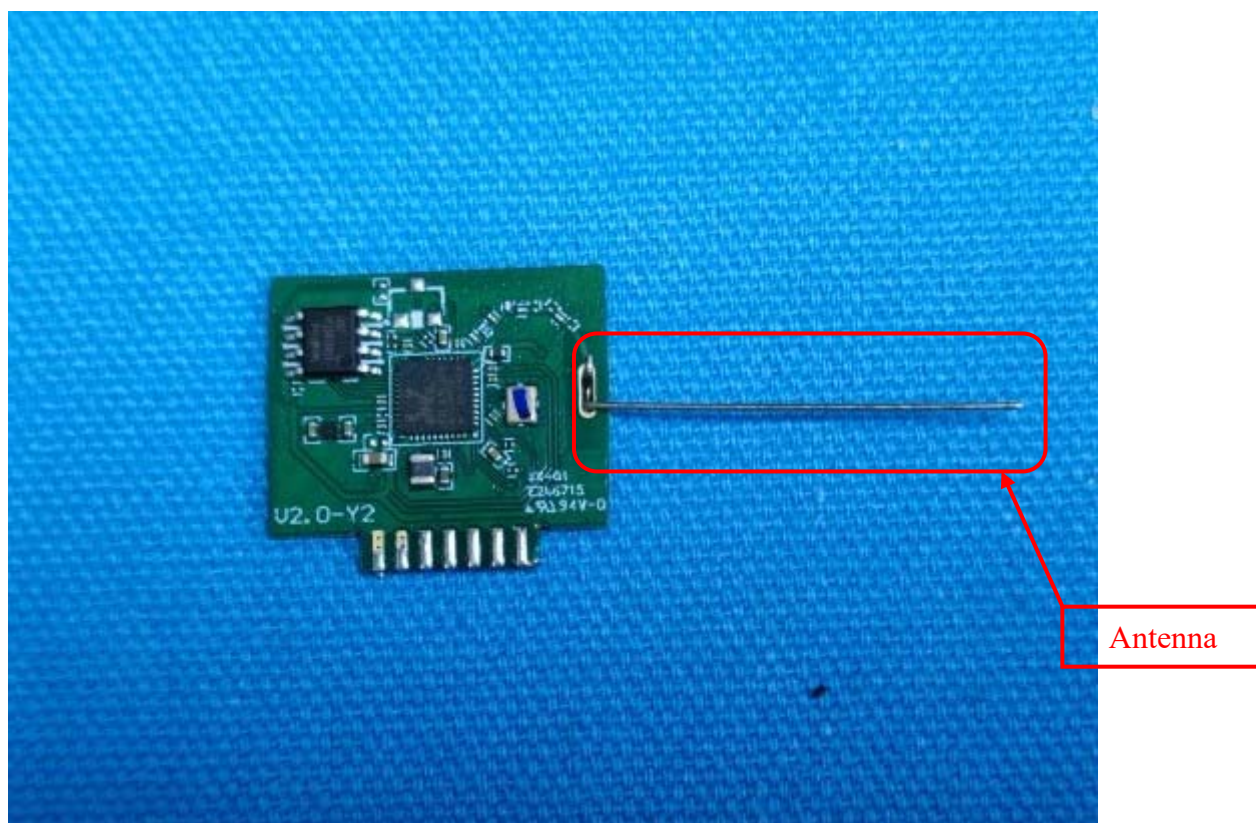


FIGURE 6
DUAL MODE TUNABLE WHITE A19 (M/N: CLEDA199SD1)
RF BOARD (COMPONENT SIDE)



*DUAL MODE TUNABLE WHITE A19 (M/N: CLEDA199SD1)
RF BOARD (SOLDERED SIDE)*

