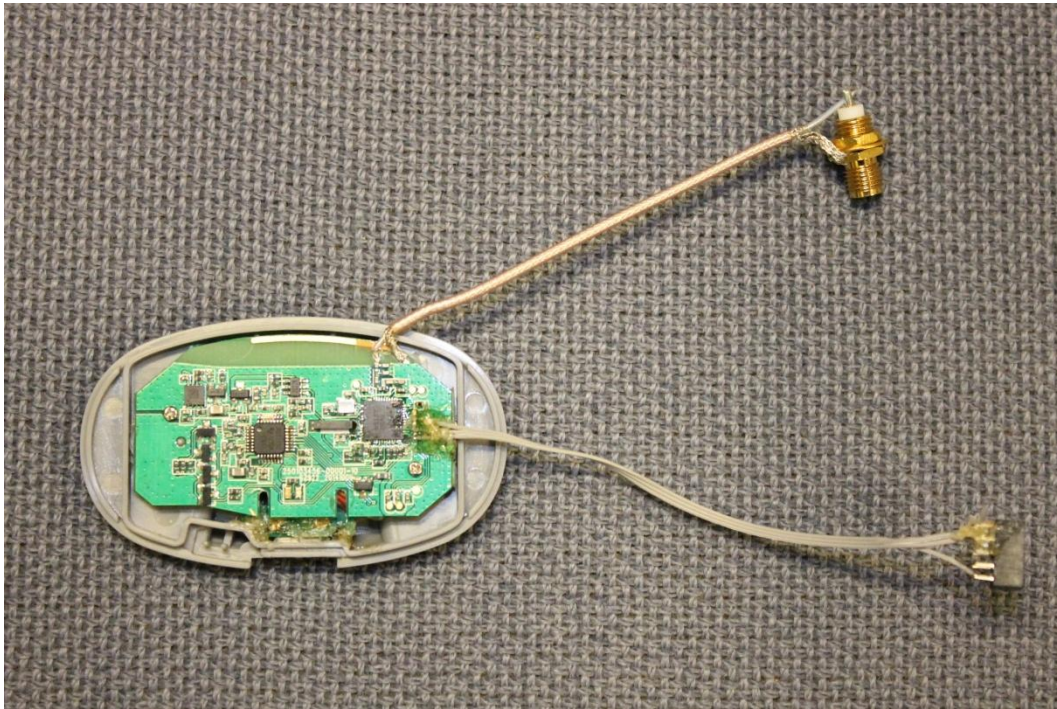
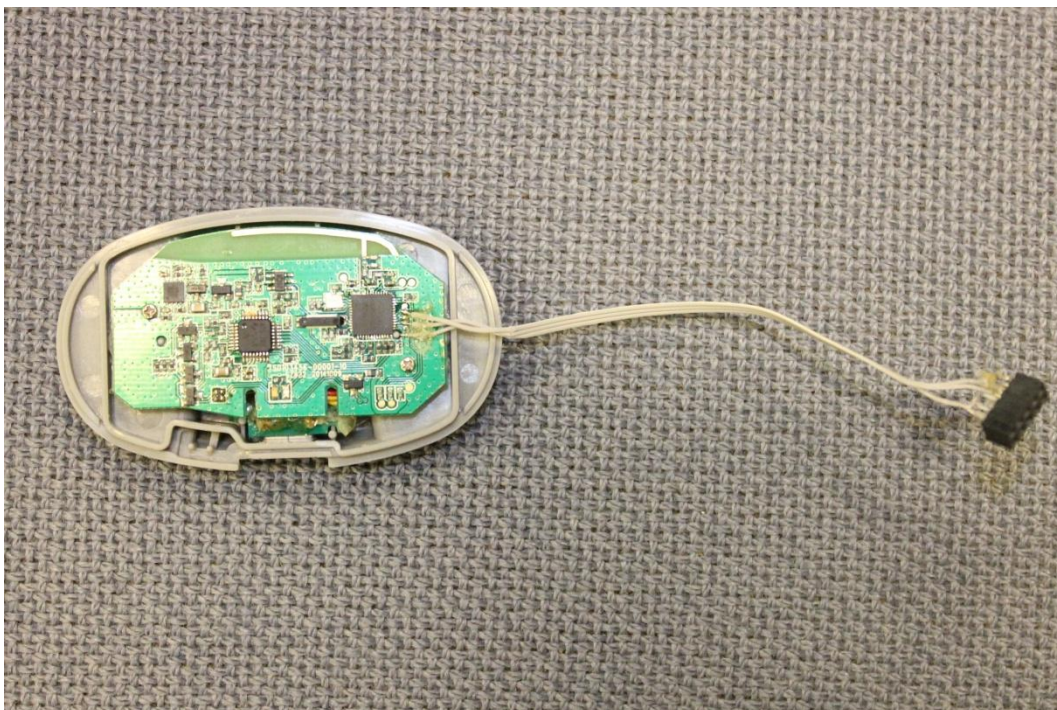


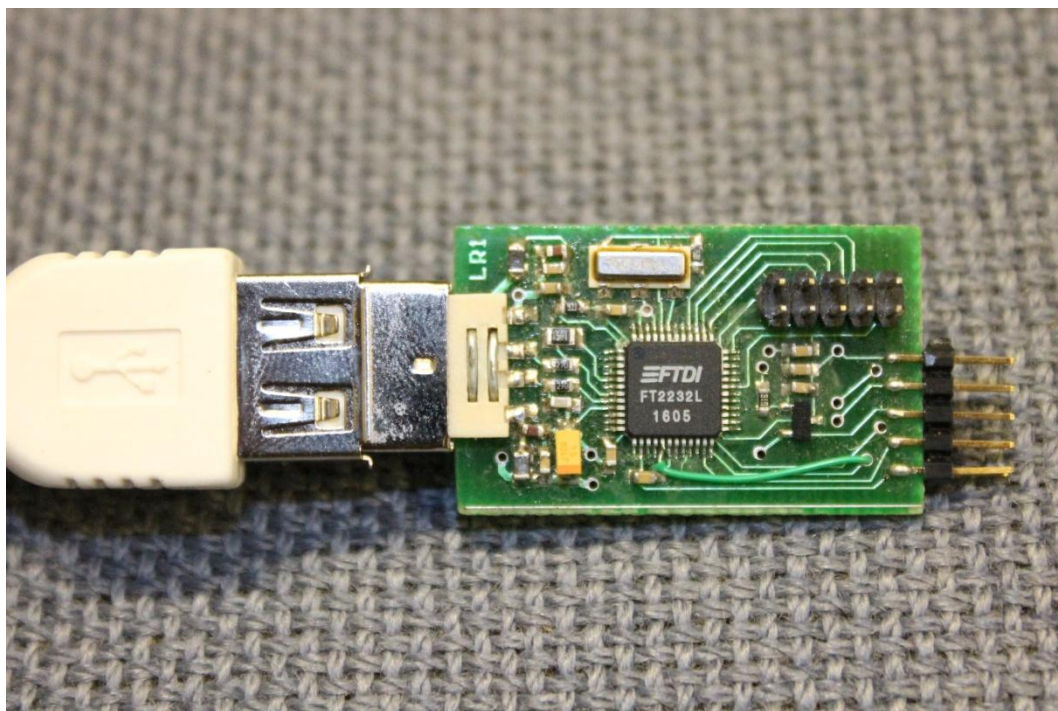
Photographs of 285768-1-2



Photograph 1. The EUT sample with temporary antenna and setup cables.



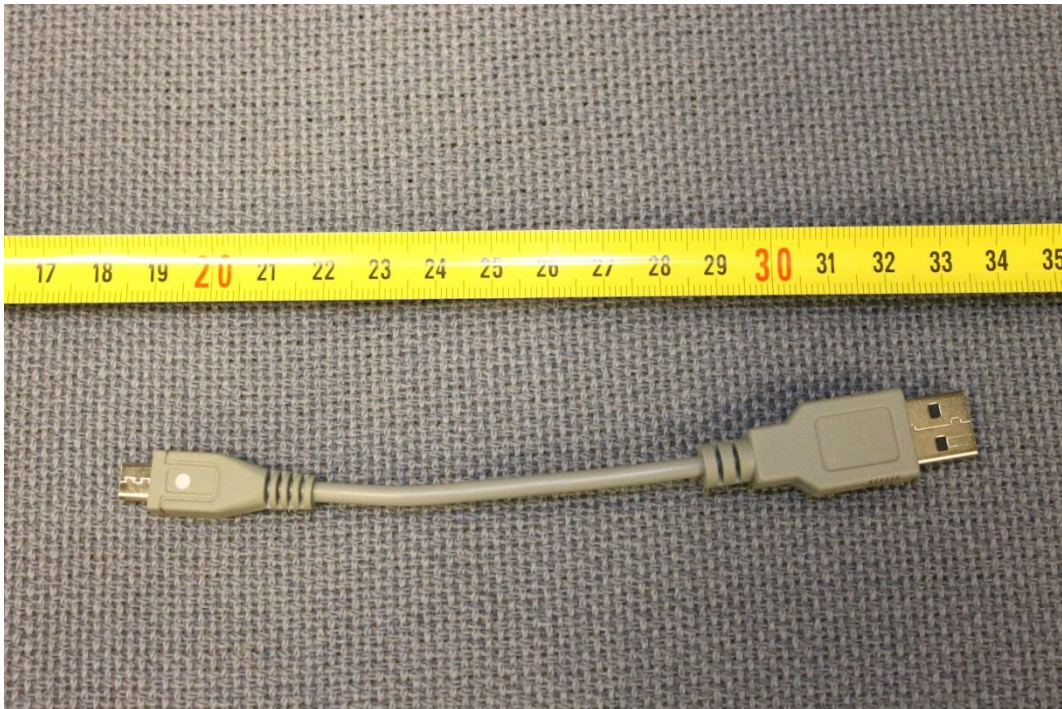
Photograph 2. The EUT sample with a test setup cable for radiated emission tests.



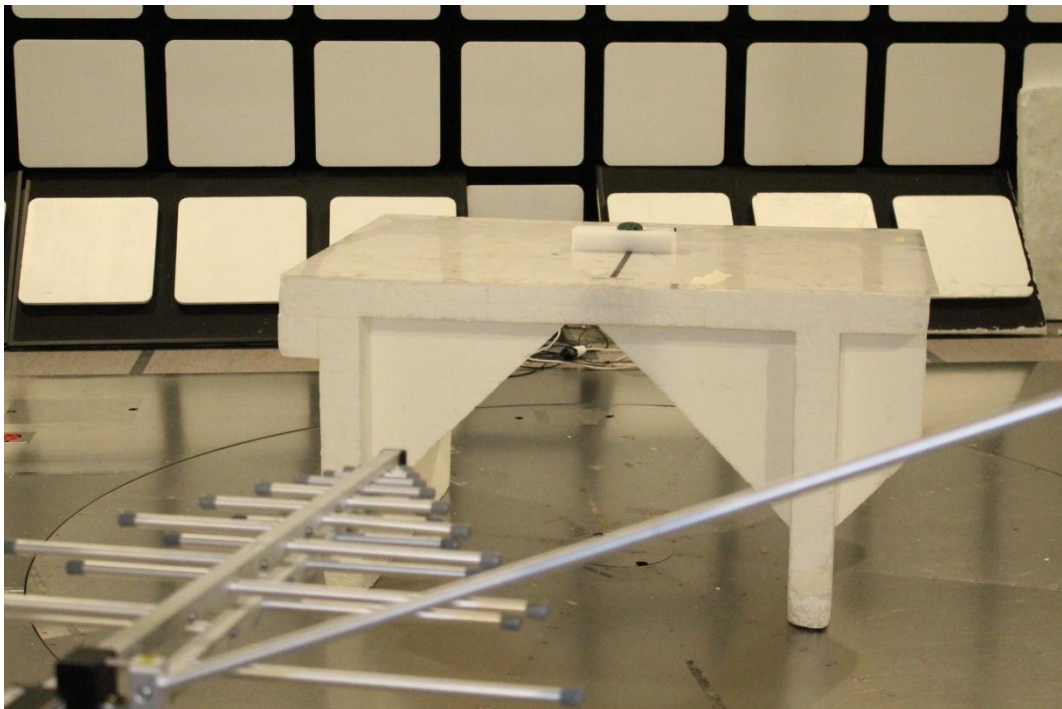
Photograph 3. The USB adapter for test setup cable.



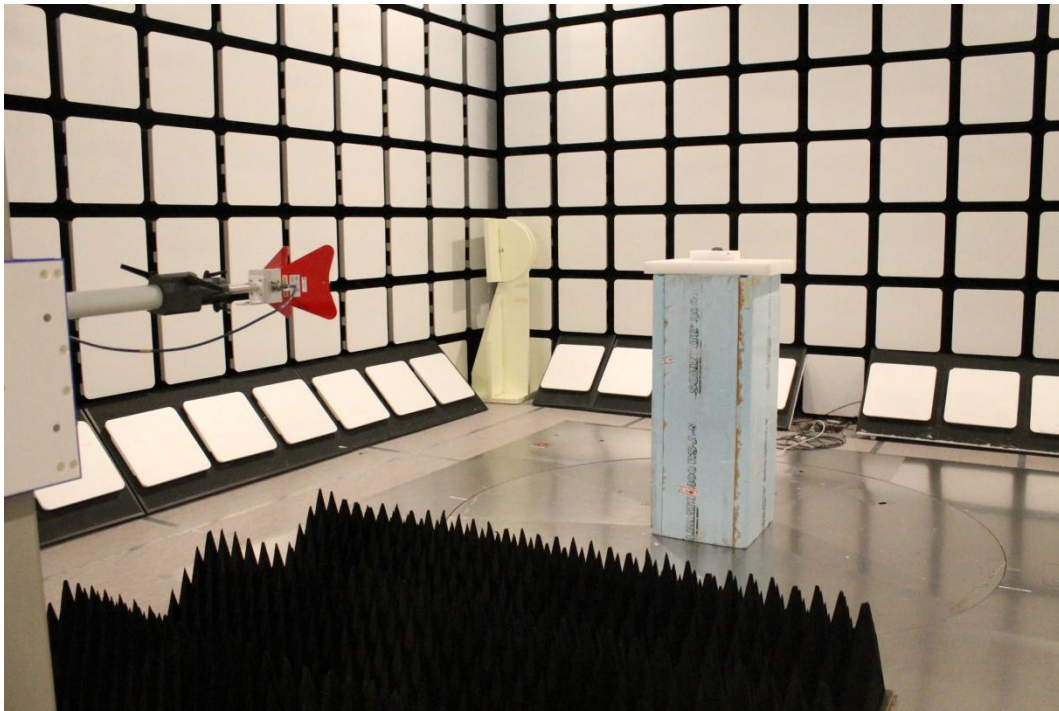
Photograph 4. AC/DC adaptor used in mains conducted emission test.



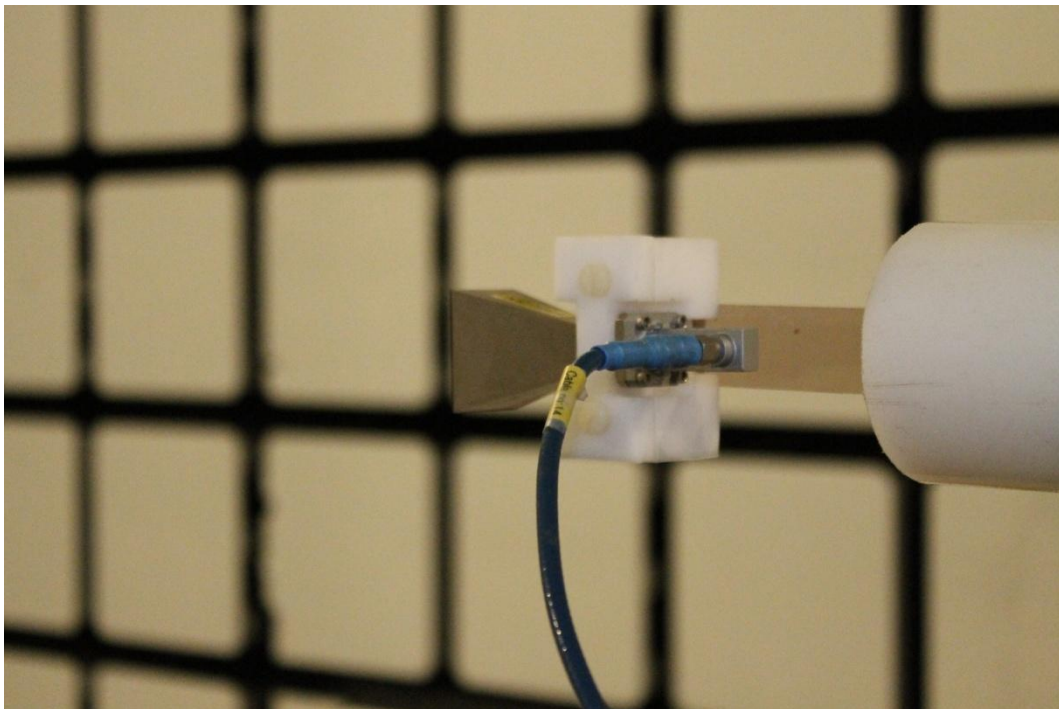
Photograph 5. Recharging cable used between the AC/DC adapter and the EUT during the mains conducted emission test.



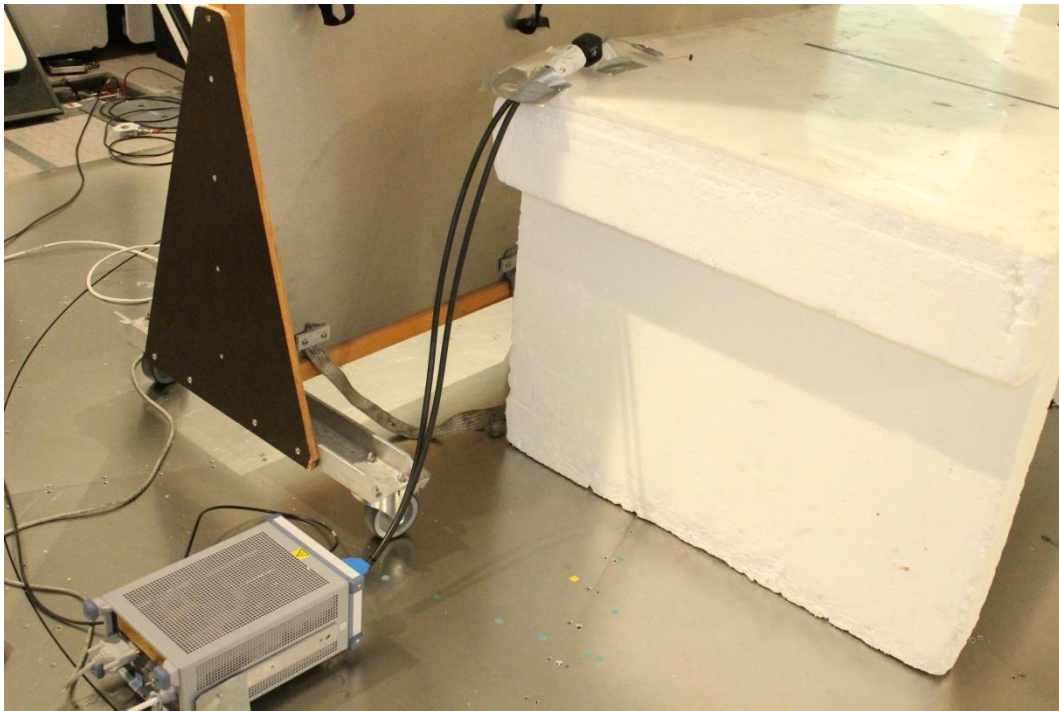
Photograph 6. Radiated emission setup (30-1000 MHz).



Photograph 7. Radiated emission setup (1-18 GHz).



Photograph 8. Radiated emission antenna 18-26.5 GHz.



Photograph 9. Conducted emission setup.