



**FP5X**

**Bluetooth Fish Finder**

**User Manual**

# Content

1. Foreword .....	1
2. Safety Tips .....	2
3. Packing List.....	2
4. Function Description of each Part of the Fish Finder	3
5. Charging Steps .....	3
6. Introduction to the Use of Fish Finder .....	4
7. APP Explain .....	9
8. Maintenance .....	1 <u>3</u>
9. Specifications .....	1 <u>4</u>
10. Common Problems and Solutions .....	1 <u>5</u>

# 1. Foreword

**Thank you for purchasing our company's FP5X bluetooth fish finder. In order to ensure the correct and safe use of this product and maximize its performance, please read this manual carefully before operation.**

This product is designed with a Bluetooth transfer function, which can be connected to a mobile phone. This product operates on rechargeable batteries.

How it works: This product uses sonar to detect water depth, fish schools, and help you determine the bottom profile, composition, and structure. The principle is: the fish finder sends a series of pulsed ultrasonic waves into the water, the ultrasonic waves propagate in the water, and when encountering various obstacles, the echoes are returned to the fish finder. The echoes are detected by the fish finder and then converted into electrical signals. The microprocessor uses special algorithms to process the signals to analyze the composition, distance and size of obstacles, and the processing results are displayed on the screen for user reference.

## **2. Safety Tips**

Please observe the following safety tips, otherwise it may cause equipment sensitivity decline, equipment failure, and property damage:

The water depth measurement and obstacle detection functions of this device cannot be used to assist navigation on the water, so as to avoid hitting rocks, damage to the boat or personal injury. If you suspect that you have entered shallow water or there are obstacles underwater, please sail with caution at low speed.

Do not attempt to disassemble parts that are not instructed and described in this manual, as doing so will result in loss of warranty and even equipment damage.

Keep this product away from heat sources such as radiators, heaters, stoves and other heat sources.

Do not store at extreme temperatures above 60°C.

Children under the age of 10 should only use this product under adult supervision!

## **3. Packing List**

Fish finder x 1;

User Manual x 1;

USB-DC charging cable x 1 (the power adapter needs to be prepared by the user, 5V1A/5V2A is

recommended);

## 4. Function Description of each Part of the Fish Finder



No.	Function	No.	Function
1	Cover	5	Water switch
2	Sealing ring	6	Sonar face
3	Bottom cover	7	Antenna
4	Cover nut	8	Charging port

## 5. Charging Steps

5.1 Hold the lower cover and the upper cover of the fish finder with the left and right hands respectively, turn and unscrew the upper cover counterclockwise, insert the DC port of the charging cable into the charging port of the fish finder, and connect the USB port to the USB power adapter (the power adapter requires User

prepared, it is recommended to use 5V1A/5V1.5A/5V2A);

5.2 When charging, the charging indicator LED (red) will flash; when the battery is fully charged, the indicator LED will always on.

5.3 Twist the upper cover back clockwise, and turn it about two turns to get it in place. At this time, the shape of the bottom cover is symmetrical on the upper and lower sides, and the threading nuts are located on the left and right sides. At this time, you will feel that the resistance increases significantly.

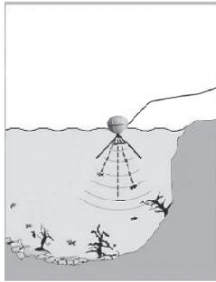
### **Notice:**

1. If the temperature of the fish finder is lower than  $-10^{\circ}\text{C}$ , the output power of the battery and the battery life of the device will decrease. The low temperature may cause the battery to charge too slowly or cannot be charged. Please charge it in an environment above  $0^{\circ}\text{C}$ .

2. The charging voltage of the fish finder is 5V. It is forbidden to charge the fish finder with other charging cables, otherwise it may damage the fish finder.

## **6. Introduction to the Use of Fish Finder**

### **6.1 Usage Method**



Method 1: Connect the fishing line to use the cast rod;

Tie the fish finder, float and bait to the fishing line and put them into the water together. When the fish finder enters the water, it will automatically start working. This product uses sonar technology, the fish finder injects ultrasonic waves into the water, and the central processor of the fish finder will filter and analyze the collected signals. The analysis results are then compiled and displayed on the mobile phone display. The latest data is on the far right of the display and disappears on the far left. The middle of the display shows the underwater structure. Water depth, temperature, fish logo are all shown on the display.

Method 2: Use with a remote control boat and send

the fish finder to the fishing spot.

## **6.2 Precautions for the Use of Fish Finder**

1. When the fish finder is working, do not touch the bottom of the fish finder with your hands. Otherwise, the test results of the product will be wrong, and even the components inside will be damaged. If you want to get a working fish finder out of the water, you can grab the fish finder casing around the edges and remove it.

2. Our products can be used for a long time under normal conditions. However, due to the ups and downs in the water, the fish finder may be impacted, causing it to hit the reef and other objects, resulting in damage to the fish finder.

3. Due to the physical properties of ultrasound itself, we recommend not using this product when the water depth is below 0.8m (2.5FT).

## **6.3 Usage Mode :**

### **6.3.1 Real-time scan mode**

The fish finder can scan the water bottom of the passing location in real time. Put the fish finder into the water, slowly drag the fish finder to move on the water surface, you will be able to see the accurate bottom information (including bottom structure, depth, fish position, etc.) from the display.

### **6.3.2 Fixed point scan mode**



Put the fish finder into the water and let it float on the surface. It will scan the water bottom of the monitoring area. Bottom information will be automatically shown on the display. Once a fish enters the monitoring area, the fish symbol will appear on the display.

## **6.4 About the Fish Finder**

The fish finder consists of two parts: one part is the sonar part and the other part is the radio part. Sonar part: compile the collected signal through the radio part and transmit it to your mobile phone.

## **6.5 Power supply part**

The power supply of the fish finder part is a polymer rechargeable battery. When the battery is used up, you can charge it by yourself. For the charging method, please refer to the illustration above.

## **6.6 How to Tie the Fish Finder**

The upper cover and lower cover of the probe are each designed with a screw hole, screw the matching threading screw into the screw hole, and then tie the fishing line in the hole of the threading screw.

The screws need to be tightened, and the fishing line needs to be tied firmly to prevent the probe from being lost. For safety, the two threading screws of the upper cover and the bottom cover can be tied at the

same time, and it is necessary to ensure that the sonar working surface floats vertically downward on the water surface.

Before use, please check whether the fishing line tied to the threading screw is in good condition. If any damage is found, please replace the fishing line.

## **6.7 Electronic Switch**

There are 2 contact terminals at the bottom of the fish finder, these 2 terminals are the electronic switch of the fish finder.

The working process of the electronic switch is as follows:

1. When the fish finder is put into the water, the two terminals touch the water surface, the conductivity of the water will make the two terminals conduct, and the fish finder switch is turned on and starts to work. Because pure water does not contain ions and has no conductivity, the fish finder cannot be automatically turned on in pure water. Please do not test the machine in pure water.

2. When the fish finder is taken out of the water, after the water on the fish finder is wiped dry, the electronic switch will continue to work for 2 minutes. If the APP is closed or disconnected, the fish finder will power off after 2 minutes.

## **6.8 Fish Finder Maintenance and Storage :**

1. Do not put the fish finder in a damp and watery place when not using. Otherwise, the fish finder may turn on unexpectedly, resulting in power exhaustion and other failures. Store in a dry and insulated environment.

2. Do not put the fish finder on metal objects, and do not let any metal objects touch the two electronic switch terminals, so as to avoid accidental conduction work, resulting in power exhaustion and other failures.

3. Before storage, dry the water; if it has been used in seawater, please rinse the seawater on the surface of the fish finder with clean water, and then dry it for storage.

## **7. APP Explain**

### **7.1 APP Download and Installation**

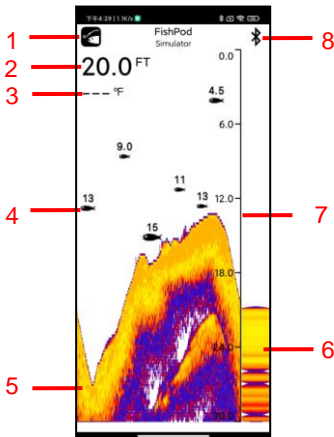
You can search the APP in APP Store and install:



**FishPod Portable**

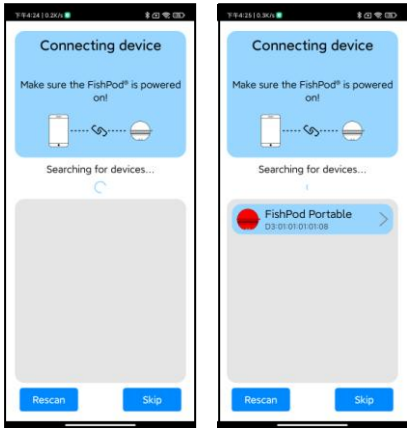
## **7.2 User Interface Description**

<b>NO</b>	<b>Content</b>	<b>NO</b>	<b>Content</b>
1	Menu	2	Water Depth
3	Temperature	4	Fish Icon
5	Water Bottom	6	Flasher
7	Depth Scale	8	Devices



### 7.3 Device pairing instructions:

- Turn on the device and keep it on.
- Open the APP and automatically enter the device pairing interface (as shown below).
- APP will automatically start to scan the device, you can also click the "Search" button to scan again.



d. After the device is searched, Click "device " to connect the device and enter the main interface automatically.

e. If it is a paired device, the system will automatically connect to the device and enter the main interface.

f. Common problems:

App can't find the device:

◇ Check if the device is turned on.

◇When you start the APP for the first time, you have forbidden some permissions.

◇Check whether the Bluetooth permission of the APP is turned on.

◇The mobile phone of Android system needs to turn on the location service, and the mobile phone pull-down setting starts the location service (GPS)

After the device is disconnected, it does not automatically reconnect:

◇The device is too far away and needs to be closer.

◇The Bluetooth of the mobile phone is off, turn it on.

## **8. Maintenance**

In order to make better use of our products, we recommend that you refer to the methods we provide for maintenance.

8.1 Wipe the device regularly, do not use abrasives or solvents, and dry it before storage.

8.2 It is recommended to store the device in a cool and dry place. The storage temperature should not be higher than 60℃, otherwise the aging of electronic components will be accelerated, resulting in equipment

failure.

8.3 The product cannot be stored on the metal plate, and the product should be placed in an insulated place.

8.4 Please pay attention to protect the sonar working surface to avoid bumps, scratches and impacts. Uneven and defective working surfaces will cause the performance of the equipment to decline.

## **9. Specifications**

Detection range: 0.8-60M/2.5~200FT

Sonar frequency: 125kHz

Sonar radiation angle: 45°

Working temperature: -10℃ ~50℃

Working current: 200mA

Charging voltage: DC5V

Unit: Inch/Metric can be switched

Power supply: 500mAH polymer battery

Product size: Ø65mm

Wireless Operating Range: 40m



## 10. Common Problems and Solutions

Question	How to handle
Fish finder won't turn on	<ol style="list-style-type: none"><li>1. Please confirm whether the battery power is sufficient. You can try it by charging it first.</li><li>2. Please use it at a temperature higher than <math>-10^{\circ}\text{C}</math>.</li><li>3. After the metal terminals are polluted or corroded, the electrical conductivity will deteriorate, which will affect the startup. Please clean the exposed metal parts of the metal terminals.</li><li>4. If you are testing the probe, please use tap water or water containing impurity ions. The fish finder cannot be turned on in pure water without impurities.</li></ol>
The mobile phone cannot communicate with the fish finder	<ol style="list-style-type: none"><li>1. Please confirm whether the battery of the fish finder has power and the Bluetooth setting of the mobile phone is turned on.</li><li>2. Please confirm that the ambient temperature is above <math>-10^{\circ}\text{C}</math> (<math>14^{\circ}\text{F}</math>). When using this product in a cold environment, make sure that the working temperature of the fish finder is appropriate.</li></ol>
Depth	<ol style="list-style-type: none"><li>1. After the fish finder is turned on</li></ol>

<p>reading is "---" or "00.0"</p>	<p>normally, there will be a flashing light indication. If not, it means that the fish finder is not turned on normally.</p> <p>2. Please confirm that the water depth is within the range of 0.8~60 meters (2.5~200FT), which refers to the distance from the fish finder to the bottom of the water.</p> <p>3. Please confirm that the waves on the water surface are not large, the fish finder floats on the water surface, and the state is balanced.</p>
<p>In shallow water, there are fish under the probe visible to the naked eye, but the host screen shows no fish</p>	<p>1. It is recommended to use and test in waters with suitable depth. Use and testing in places where the water depth is less than 0.8 meters (such as shallow streams, small buckets, water tanks, fish tanks, etc.) will give wrong results.</p> <p>2. In a small-scale closed water body (such as a small bucket, water tank, fish tank, etc.), the sonar signal will be interfered by the reflection of the cylinder wall, resulting in misjudgment. Recommended for use and testing in open water.</p>
<p>The echo</p>	<p>1. Make sure the fish finder is</p>

<p>signal is intermittent, the depth display is unstable, and the fish school cannot be displayed</p>	<p>straight down.</p> <p>2. The underwater vegetation system is too complicated, resulting in disordered depth readings. If this is determined to be the cause, it is recommended to stop using fish finders in the area.</p> <p>3. Oil, dirt, etc. will form a film on the surface of the fish finder, reducing the working efficiency of the fish finder. At this time, please clean the stains on the surface of the fish finder.</p> <p>4. The electrical noise of the ship's engine interferes with the work of the sonar. In this case, please rearrange the fish finder to keep the fish finder away from the cables of the hull itself.</p> <p>5. Please check the battery level. Low battery power will weaken the transmission power of the fish finder and affect the detection ability.</p> <p>6. Check the sensitivity settings, try to set the sensitivity to high.</p> <p>7. The installation position of the fish finder may be just at the rapids caused by the sailing of the ship. At this time, please change the</p>
---	---

	<p>installation position of the fish finder to avoid the rapids caused by the navigation.</p> <p>8. This happens when the boat speed exceeds 8 km/h. In this case, please reduce the speed of the boat.</p>
Temperature display is not accurate	<p>When the fish finder is moved from one temperature environment to another, the built-in temperature sensor needs a certain period of time to sense the change of the ambient temperature. This time may take 5-25 minutes depending on the temperature difference between the old and new environments. more accurate data.</p>