

# Blue I manual

## 1.0 Getting started

### 1.1 Package includes

You should have in your possession a blue containing all the software you will need to take full advantage of this Bluetooth device. This manual should be sufficient help to get you up and running with your new blue I.

### 1.2 Prepare your device

Your blue I is easily slipped on to the back of your iPAQ. Make sure that it is pulled up to the max; you will hear a click once the blue I is in the right place. Once there, the installation program starts directly.

## 2.0 Installing the software

When the Blue I is correctly slipped on, the software installation will commence automatically and install the software needed for the iPAQ. Afterwards the Wizard will start to guide you thru the pairing process.

### 2.1 Wizard

The wizard is here to help you to pair your Bluetooth devices with your iPAQ. Put the Bluetooth device(s) you want to pair with in discoverable mode and click next. The wizard will now start to discover you devices. This operation will take a few seconds, and when its done you will see a list of devices found. (screen). Select the device you want and the wizard will try and pair it for you. If the device you are paring with requires a passkey the wizard will prompt you for one now. When completed, you will find yourself in the Bluetooth properties page and hopefully with your paired device in one of the roll-down menus. If you do have any problem with the wizard please see *7.1 Installing software*, for more information.

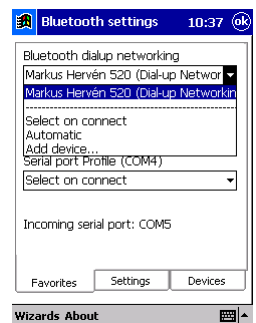


## 3.0 Bluetooth Properties page

The Bluetooth Properties page is the place from where you have full control over anything concerning Bluetooth. You will see three tabs to the bottom; Favorites, Settings and Devices. There is also a menu where you can reach the wizard, as well as enable or disable the startup tips.

### 3.1 Favorites tab

Favorites give you an overview of the devices in use, and a nice and easy way to change the active in the different services by selecting a new one



from the drop-down menus. To change or add a device you simply roll down that service drop-down menu to your preferred choice.

- You can *select a device* to connect with.
- *Select on connect* allows you to select which device to connect to when the connection is made.
- *Automatic* chooses the first Bluetooth device it can find.
- *Add device* allows you to add a device to the list, can also be done from the device properties page, see 3.3.1 Device properties.

## 3.2 Settings tab

Here you have the opportunity to change the settings of the blue I. The local bluetooth device name is the name that other Bluetooth devices will see. Make discoverable will enable the blue I to be found by other Bluetooth devices until you press the button again or you close Bluetooth preferences. More options you may change are

- Use authentication selects if you want your devices to use a passkey to be able to pair with your blue I.
- Default pincode allows you to set a pincode, instead of being prompted of one when pairing.
- Use encryption, allows you to turn of the embedded encryption.
- Disable led turns of the blinking LEDs on the back to save battery.

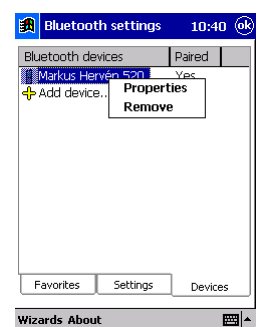


You will also find a power save mode, where you set if the blue I should *Boot on insertion* or *Boot on demand*. The last one saves your battery power, but *Boot on insertion* is faster to start up.

## 3.3 Devices tab

This is the complete device list of devices known to your blue I. Every Bluetooth device your blue I is paired with will be on this list and also all devices that you manually add. In the right column you see if the device is paired with your blue I. A double-click or a tap and hold on the name will bring out the device menu, from where you can do the following...

- See and change the properties of the device
- Remove the device from your device list



You can also add a device to the list of known, by clicking on add device.

### 3.3.1 Device properties

In the device properties page you see all information about the remote device, such as device name, address and remote services supported. You can change what the remote device will be called on your device. Here is also an option to use the device for ActiveSync. Only one device can be selected for ActiveSync. To start ActiveSync

over Bluetooth, see 4.2 Synchronizing thru Bluetooth. To retrieve the remote device name and services, press the refresh button. There is also a button where you can pair or unpair your blue I with the remote device. At the bottom of this page is a list of all services supported by the remote device. All services that are checked, will be shown in the favorites tab under the correct profile.



## 4.0 iPAQ configuration

At the end of the wizard you will be prompted to enter your information to set up a modem using dial up networking thru Bluetooth. If you missed out on this or you need to change your information you may enter the information manually in connections or you can use the wizard at the bottom of the Bluetooth Properties page.

## 4.1 Connections

Information on how to manually set up a connection, please consult you iPAQ manual.

## 4.2 Synchronizing thru Bluetooth

To start an ActiveSync over Bluetooth go to the today screen. At the bottom right is a Bluetooth icon, click on this to show a menu. Select *Start ActiveSync* to commence a sync with your selected ActiveSync partner.

## 5.0 Smartcard

You insert the Smartcard at the top.

## 6.0 Bluetooth tray icon

In the today screen you will have a Bluetooth icon when your blue I is attached. If you click on it a menu will appear. From here you can see what devices you are currently connected to. Other things you can do is:

- *Connect to Internet*, allows you to choose a connection and get connected.
- *Bluetooth settings*, takes you directly to the Bluetooth preferences.
- *Start ActiveSync*, starts an ActiveSync session thru Bluetooth.



## 7.0 Troubleshooting

### 7.1 Installing software

The software installation process, as described in 2.0, starts automatically the first time you insert the blue I jacket to your iPAQ. If not, or you at any time would like to upgrade or install the software again, you may install the drivers from a computer

with active sync 3.1 or later. The drivers file consist of a setup.exe that will do the installation. Just make sure that the iPAQ is in the cradle with the blue I correctly slipped on. If that does not work you have to make sure that the ActiveSync is correctly installed on your computer. Consult the ActiveSync manual if you need help on that.

## **7.2 The Wizard**

If the Wizard does not start after you have installed the drivers you will have to start it manually. Do that by clicking the Wizard link at the bottom of the Bluetooth Properties page (see 3.0).

## **8.0 Blue I regulatory information**

This product complies with any mandatory product specification in any country where the product is sold. In addition, the product complies with the following.

### **8.1 FCC approval**

Changes or modifications made to this equipment not expressly approved by Tactel AB may void the FCC authorization to operate this equipment.

This device complies with Part 15 of the FCC Rules and with RSS-210 of Industry Canada. Operation is subject to the following two conditions. (1) this device may not cause harmful interference, and (2) this device must accept any interference received, including interference that may cause undesired operation.

This equipment has been tested and found to comply with the limits for a Class B digital device, pursuant to Part 15 of the FCC Rules. These limits are designed to provide reasonable protection against harmful interference in a residential installation. This equipment generates, uses and can radiate radio frequency energy and, if not installed and used in accordance with the instructions, may cause harmful interference to radio communications. However, there is no guarantee that interference will not occur in a particular installation. If this equipment does cause harmful interference to radio or television reception, which can be determined by turning the equipment off and on, the user is encouraged to try to correct the interference by one or more of the following measures:

- Reorient or relocate the receiving antenna.
- Increase the separation between the equipment and receiver.
- Connect the equipment into an outlet on a circuit different from that to which the receiver is connected.
- Consult the dealer or an experienced radio/TV technician for help.

The radiated output power of the Tactel blue I 420/430 is far below the FCC radio frequency exposure limits. Nevertheless, the Tactel blue I 420/430 shall be used in such a manner that the potential for human contact during normal operation is minimized.

## 8.2 Canadian RFI Statement

This Class B digital apparatus meets all requirements of the Canadian Interference-Causing Equipment Regulations. The certification no Canada XXXXXXXXXXXX.

## 8.3 European Union (EU) and EFTA

This equipment complies with the R&TTE directive 1999/5/EC and the following standards: ETS 300 328, ETS 300 826, EN 60 950 and has been provided with the CE mark accordingly.

## 8.4 Bluetooth

This equipment is qualified according to Bluetooth specification Ver.1.1 (Specification of the Bluetooth System, Core Specification Volume 1, version 1.1 February 22 2001 and Profiles Specification Volume 2 V 1.1, February 22 2001.)

## 9.0 Technical data

Power consumption standby:	2 mA
Power consumption active:	60 mA
Supply voltage:	3.2v -4.2v
Operating temperature:	0 -60 °C
Max RF output power:	2.5 mW (4 dBm)
Nominal RF output power:	1 mW (0 dBm)
Range:	Up to 10 meters, free sight.
Weight:	60 g
Size:	130*83*28 mm (l*w*h)
Bluetooth power class:	2

## 10.0 Copyright and trademark notice

The BLUETOOTH trademark is owned by Telefonaktiebolaget L M Ericsson, Sweden. The ActiveSync program and trademark is owned by the Microsoft Corporation