

Video Sender

Operation Manual

Table of Contents

1	Introduction.....	1
1.1	Features	1
2	List of package contents.....	2
3	Outline.....	3
4	Setting up units	6
4.1	Transmitter :	7
4.2	Receiver :	8
5	Channel and dwell time selection	9
5.1	Transmitter channel setting.....	9
5.2	Receiver setting.....	9
6	Using the remote relay feature	11
7	Trouble shooting	12

IMPORTANT

This equipment has been tested and found to comply with the limits for a Consumer Equipment RF Lighting device, pursuant to Part 15 of the FCC Rules. These limits are designed to provide reasonable protection against harmful interference in a residential installation. This equipment generates, uses and can radiate radio frequency energy and, if not installed and used in accordance with the instructions, may cause harmful interference to radio communications. However, there is no guarantee that interference will not occur in a particular installation. If this equipment does cause harmful interference to radio or television reception, which can be determined by turning the equipment off and on, the user is encouraged to try to correct the interference by one or more of the following measures:

- Reorient or relocate the receiving antenna.
- Increase the separation between the equipment and receiver.
- Connect the equipment into an outlet on a circuit different from that to which the receiver is connected
- Consult the dealer or an experienced radio/TV technician for help.

CAUTION:

Any changes or modifications not expressly approved by the grantee of this device could void the user's authority to operate the equipment.

Safety Pre-caution

- To prevent fire or shock hazard,
- Do not expose this product to rain or moisture.
- Do not use near a bath tub, wash bowl, sink or laundry tub
- Do not use in a wet basement or in or around a swimming pool.
- Do not open the case of this product
- Use only the power supply packed with it

1 Introduction

The new 2.4GHz system **VF2RSP** sends consistent, sharp audio and video images up to 100M to other rooms without running cable. The 2.4 GHz FM signal penetrates wall and avoids interference from other crowded 900 MHz band. Due to FM modulation, it provides a superior quality. With four channels, you could find optimal reception and transmit different sources using multiple pairs. The special hidden omni directional antenna maximizes the signal range. FCC,CE approved Easy installation.

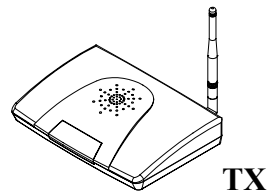
1.1 Features

- 2.4GHz signal avoids interference from the crowded 900MHz band
- Provides clear reception up to 300 feet.
- Four selectable PLL channels eliminate interference and allow use of multiple systems in the same area
- Send stereo audio and clear video signals from Cable TV, VCR, LD, VCD, CD, satellite receiver to your TV in another room without running cable.
- Penetrates walls, doors and ceilings.
- Hidden 2.4GHz antenna design
- Simple to use - just plug it in and switch it on.
- infrared extender build-in

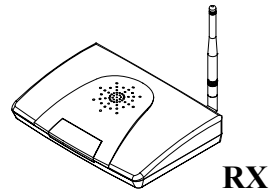
2 List of package contents

The following devices should be included in the box.

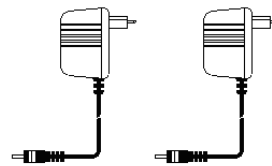
One Transmitter



One Receiver



Two power adaptor



One infrared extender



Two A/V cable (or euro/scart cable)



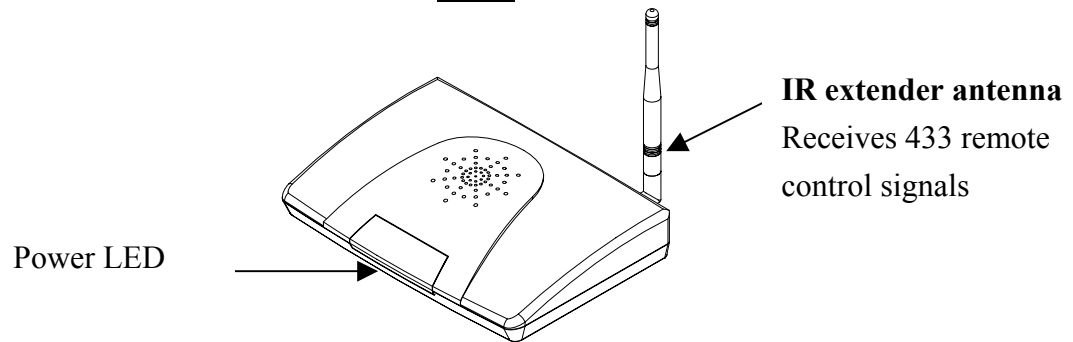
3 Outline

Model# VF2RSP

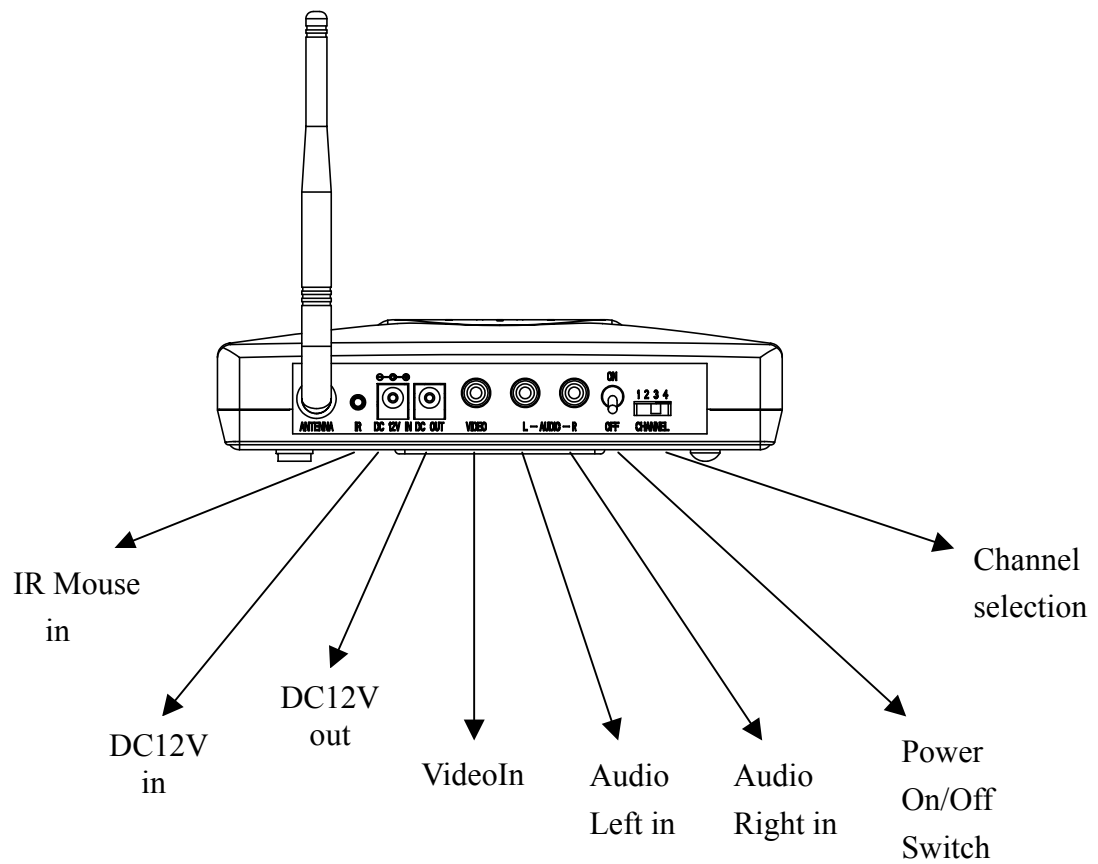


Transmitter (VT2RSP)

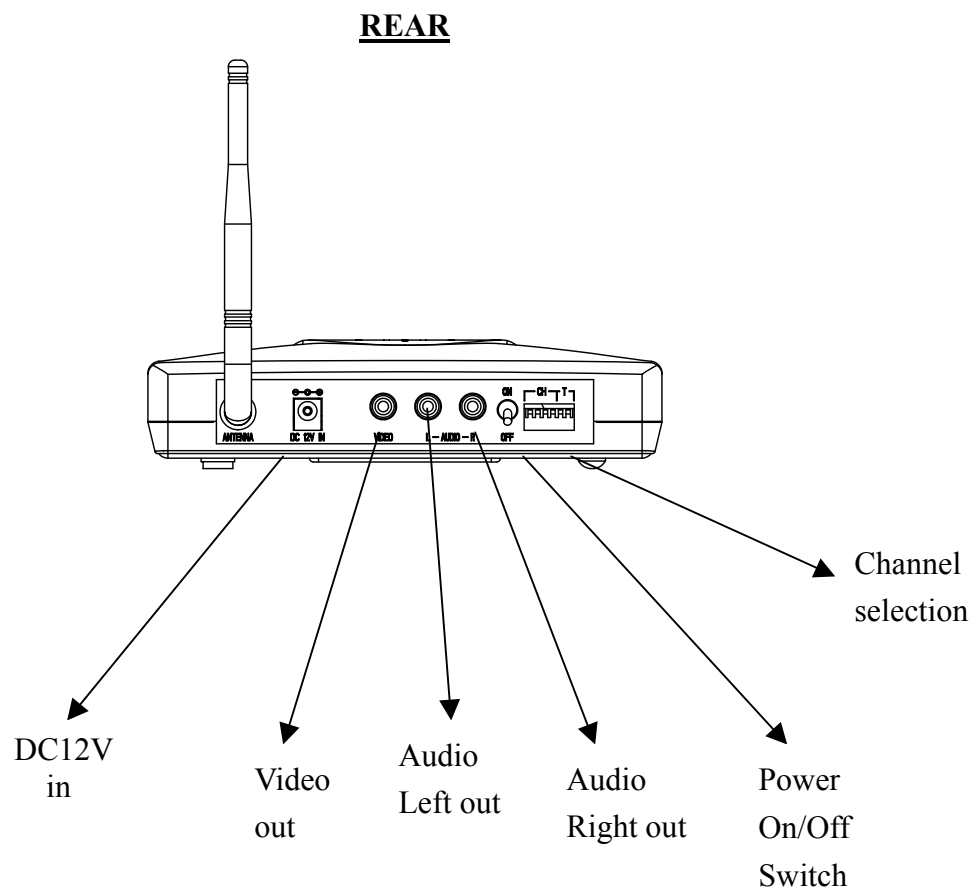
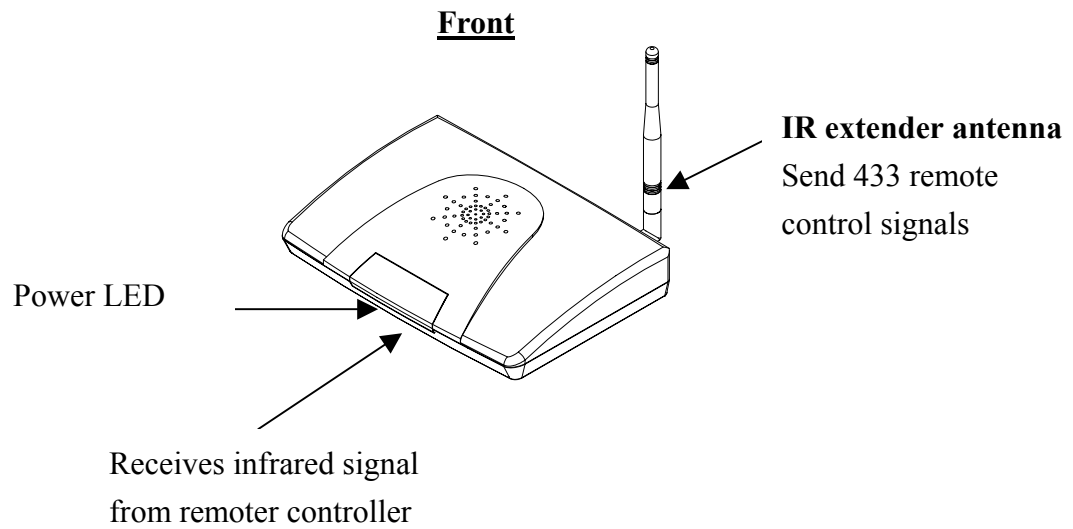
Front



REAR

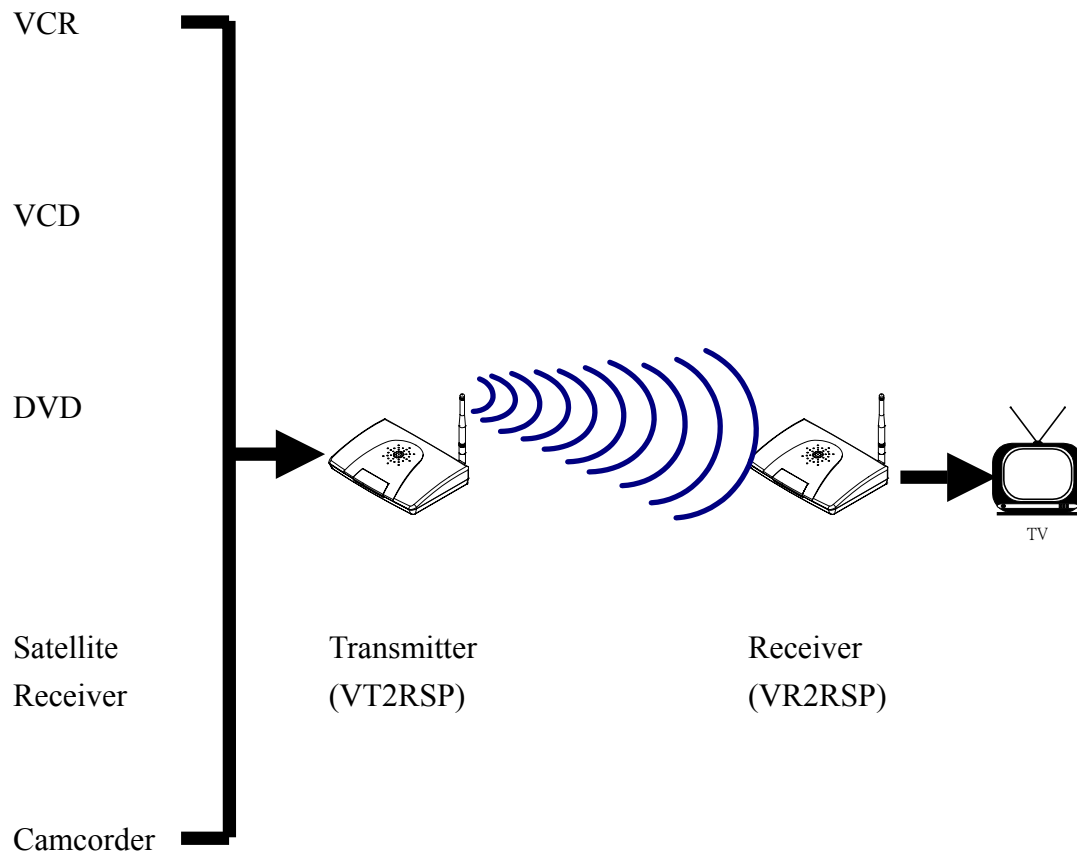


Receiver (VR2RSP)



Setting up units

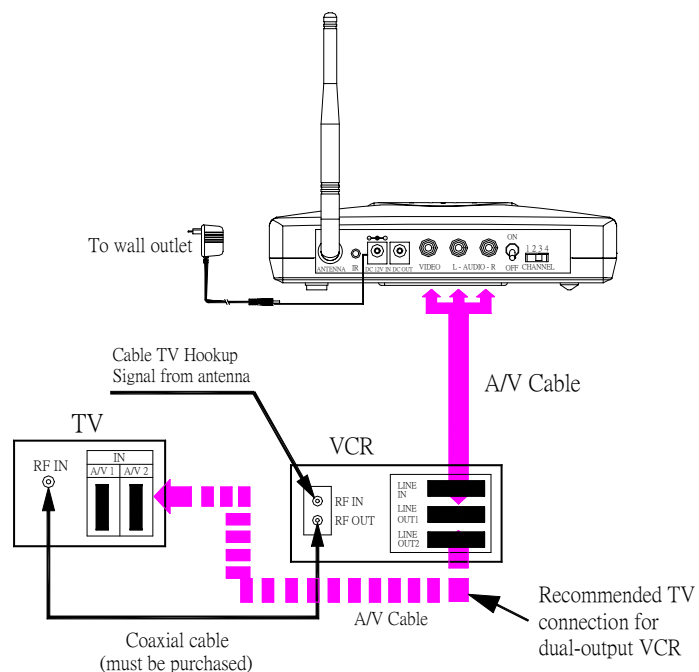
It takes only few minutes to set up Video Sender. You could connect most of audio/video source to transmitter and connect TV to receiver in another location. There is no wire needed between transmitter and receiver.



3.1 Transmitter :

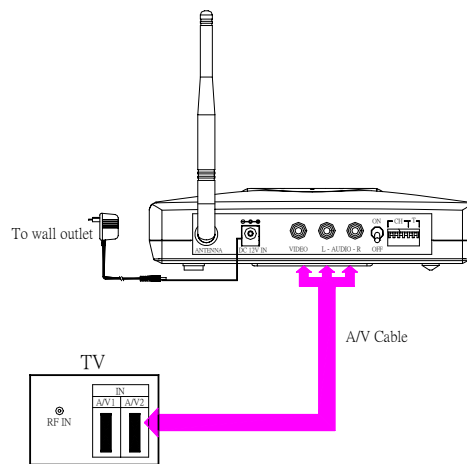
- Make sure the ON/OFF switch is at the OFF position before setup.
- Connect power adaptor to transmitter.
- Plug power adaptor to wall outlet..
- Connect transmitter to A/V source you want to view or hear at another location.
- Set the transmitting channel at back panel of transmitter. See “Channel and dwell time selection” to setup the channel..
- If you want to use remote relay function, please refer “Using the remote relay feature”.
- Turn the ON/OFF switch to ON position, the related channel indicator should be lit.

Example: From VCR with TV



3.2 Receiver :

- Make sure the ON/OFF switch is at the OFF position before setup.
- Connect power adaptor to receiver.
- Plug power adaptor to wall outlet.
- Connect receiver to TV set or other A/V displays.
- Set the receiving channel same as transmitter at back panel of receiver. See “Channel and dwell time selection” to setup channel.
- Turn the ON/OFF switch to ON position, the related channel indicator should be lit.



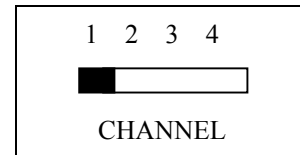
Note : If the accessory cable are euro/scart, they are different cable for transmitter and receiver. There has indicator on scart connector, please follow the indicator to install.
For RCA cable they are identically.

4 Channel and dwell time selection

4.1 Transmitter channel setting

The transmitter of video sender can send A/V source by the channel that you selected. You can use up to 4 transmitter in the same time, but make sure each transmitter is set in different channel. Receiver can receive all channel sequentially as you specified.

For example as the figure, A/V signal was send by channel 1.



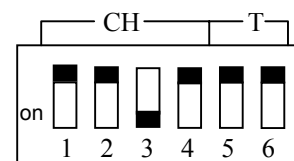
4.2 Receiver setting

You can set received channel and dwell time by two way :

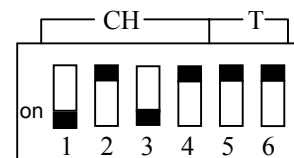
- Set channel and dwell time at back panel.
- Use optional remote handheld to select channel .

a. set at back panel

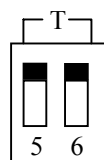
For example as the figure, it will receive channel 3.



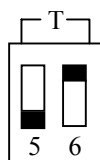
For example as the figure, it will receive channel 1 and 3 sequentially with 2 seconds dwell time.



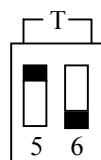
There have 4 different dwell time can be selected by changing switch number 5 and 6 as following figure.



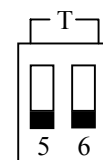
2 seconds



4 seconds



8 seconds



16 seconds

b. set by optional remote handheld

Channel select

Press “CH1”, ”CH2”, ”CH3”, ”CH4” to select the channel you want to receive.

Scan mode channel selection

If you want to receive channel 2 and 4 sequentially :

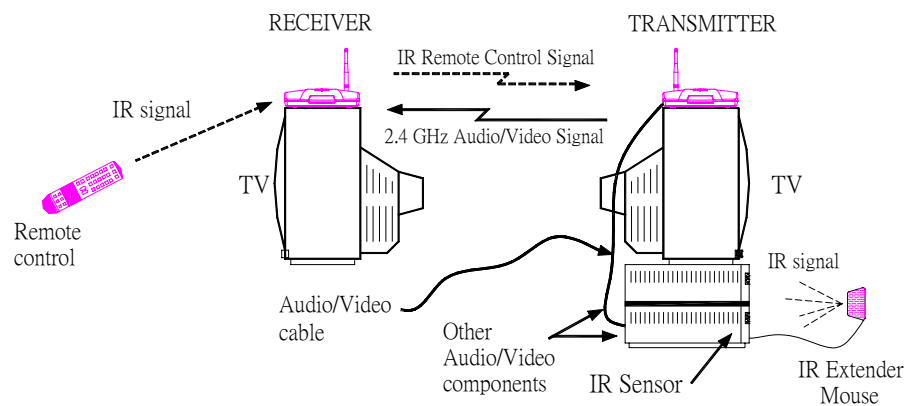
1. Press “PRGM”, all 4 channel indicator will be lit.
2. Press “CH2”, CH 2 indicator will be flash.
3. Press “CH4”, CH4 indicator will be flash too.
4. Press “PRGM”, all 4 channel indicator will be flash quickly for 5 times.

Start the scan mode

Press “SCAN” then the receiver will start to scan the channel you set.
The current channel indicator will flash during scan mode.

5 Using the remote relay feature

1. Plug the IR extender to the transmitter of video sender.
2. Locate the IR sensor of the A/V source equipment you want to control. You can find it by user's manual of the equipment.
3. Point the lamp of IR extender to the IR sensor of A/V equipment you want to control. Both the IR extender lamp and the IR sensor are with working angle about ± 30 to ± 40 degree. So be sure the IR extender is pointed to the IR sensor in general direction.
4. Position the receiver of video sender for your remote handheld signal can be received by the IR sensor in the front of receiver box.



6 Trouble shooting

1. No video or sound

- Check the power switch on the back side of both transmitter and receiver.
- Check the A/V source.
- Make sure all cables are connected correctly (especially for euro/scart connector).
- Make sure the channel setting are match in both transmitter and receiver.

2. Interference in video and sound

- If there has any microwave oven close by, please turn off the oven when you use video sender.
- Change different channel to avoid interference from other device.

3. Use two transmitter in the same time

- Use channel 1 & 4 for better receiving quality.

4. Remote relay function not work

- Clear the obstruction between IR extender and A/V equipment you want to control.
- Make sure the IR extender lamp is pointed toward the IR sensor of A/V equipment you want to control.
- Adjust the antenna of remote relay in both of transmitter and receiver.