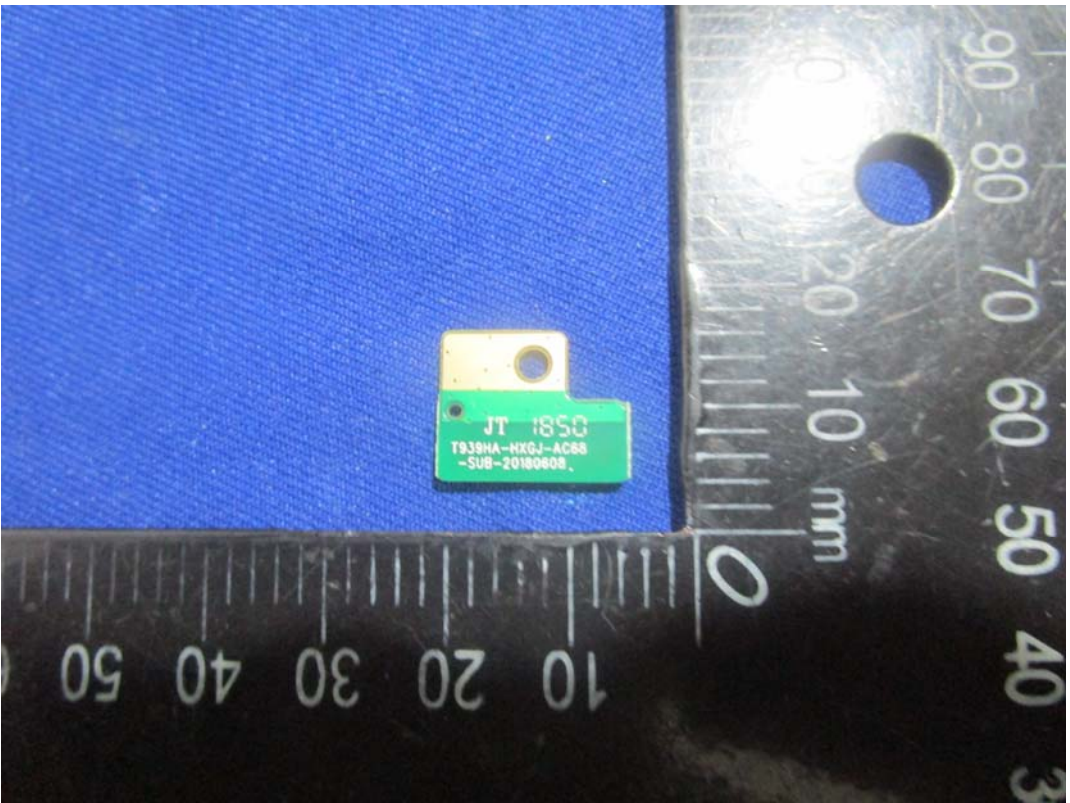
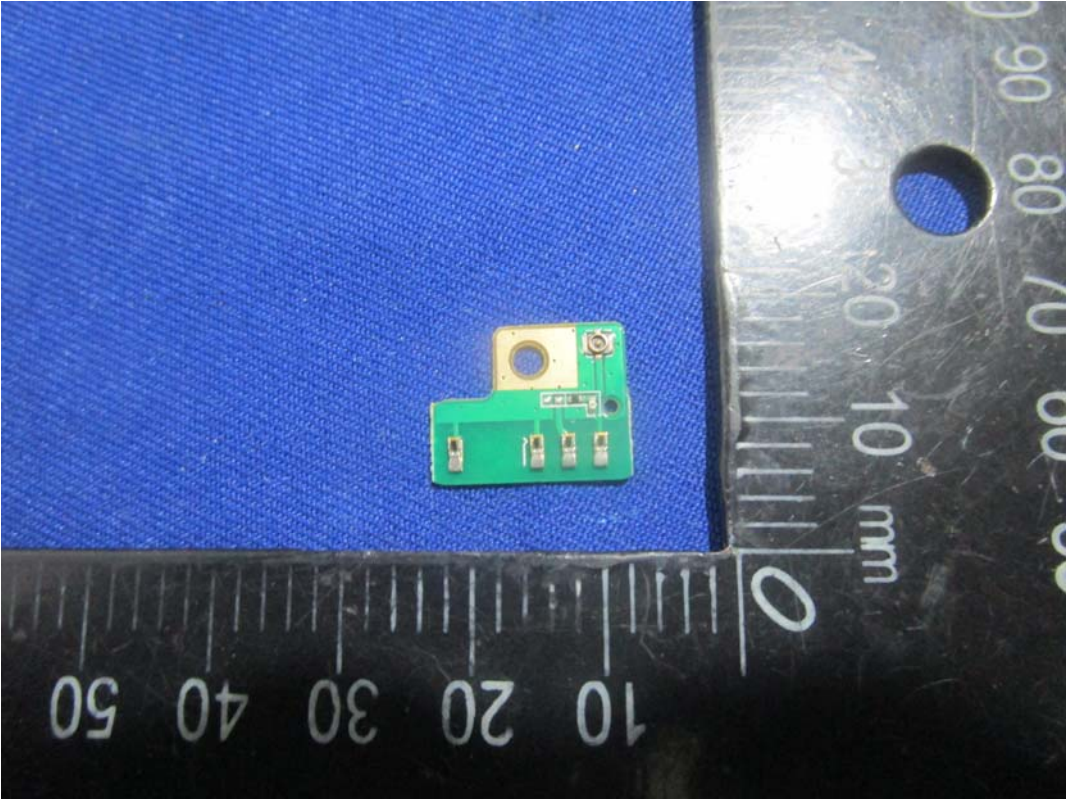
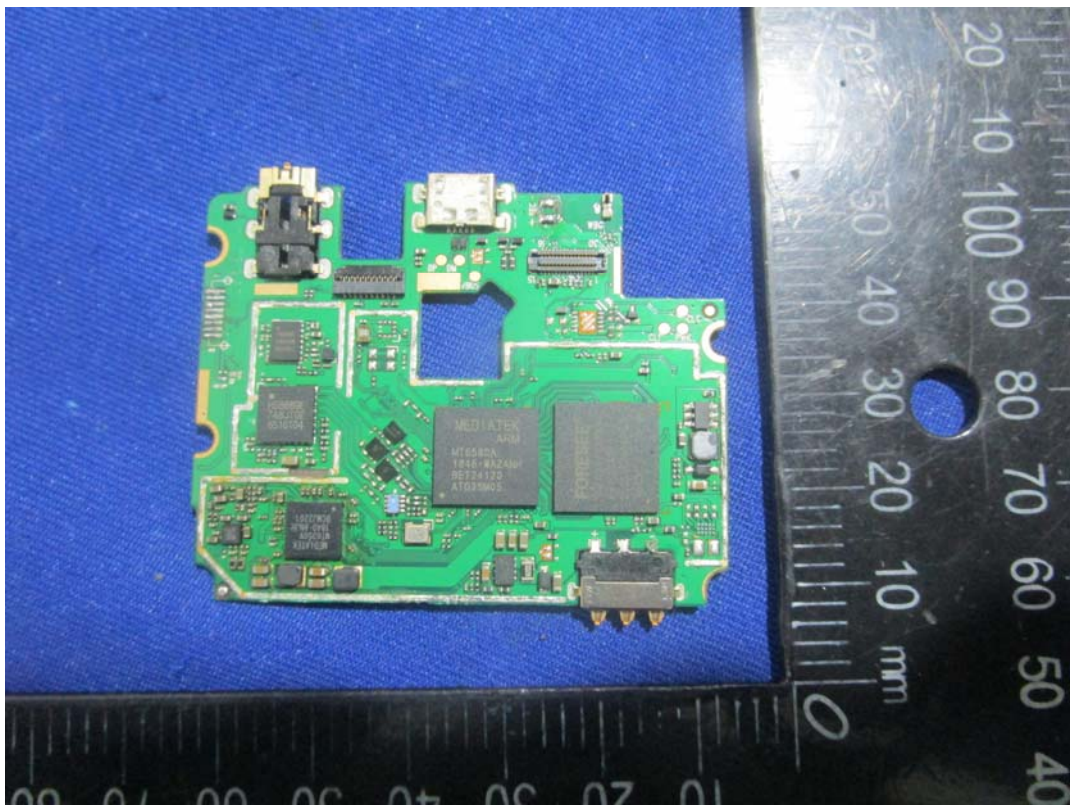
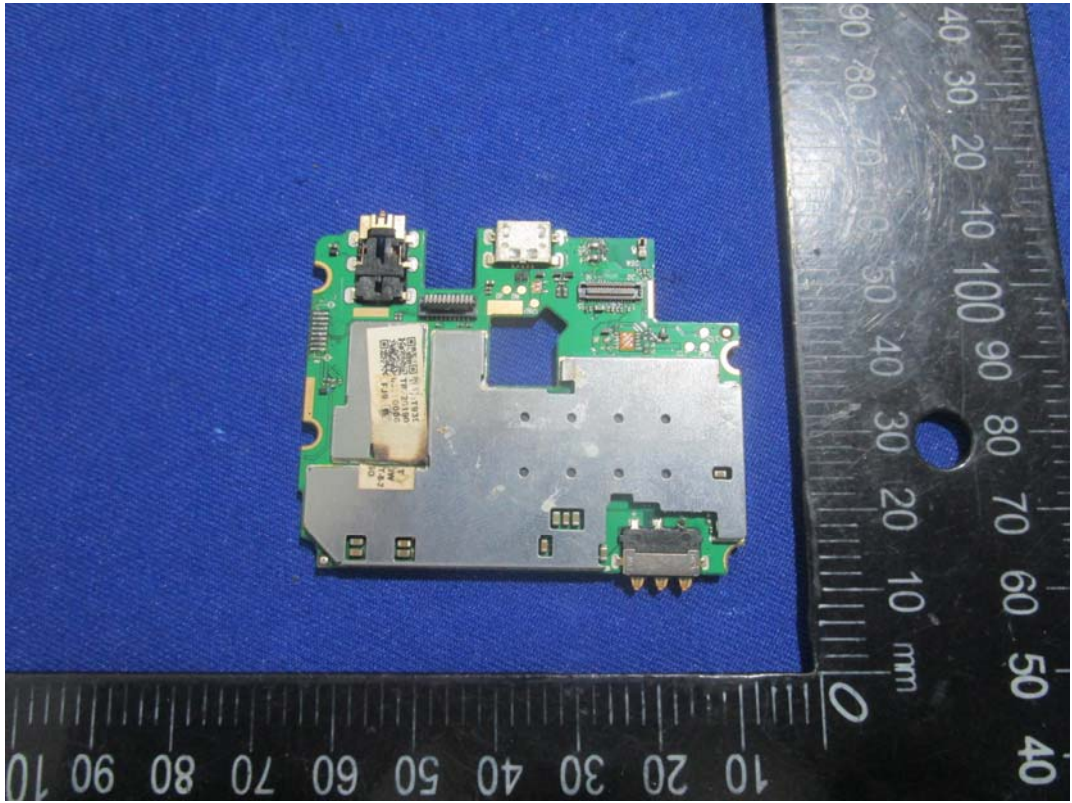
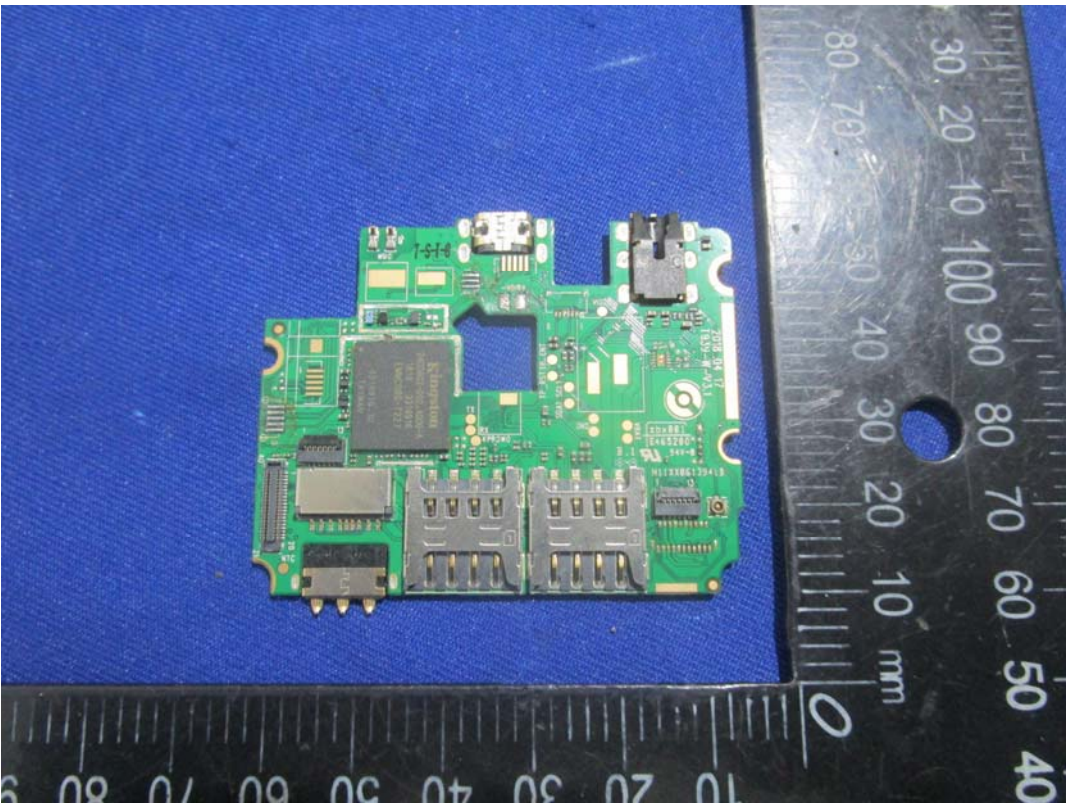
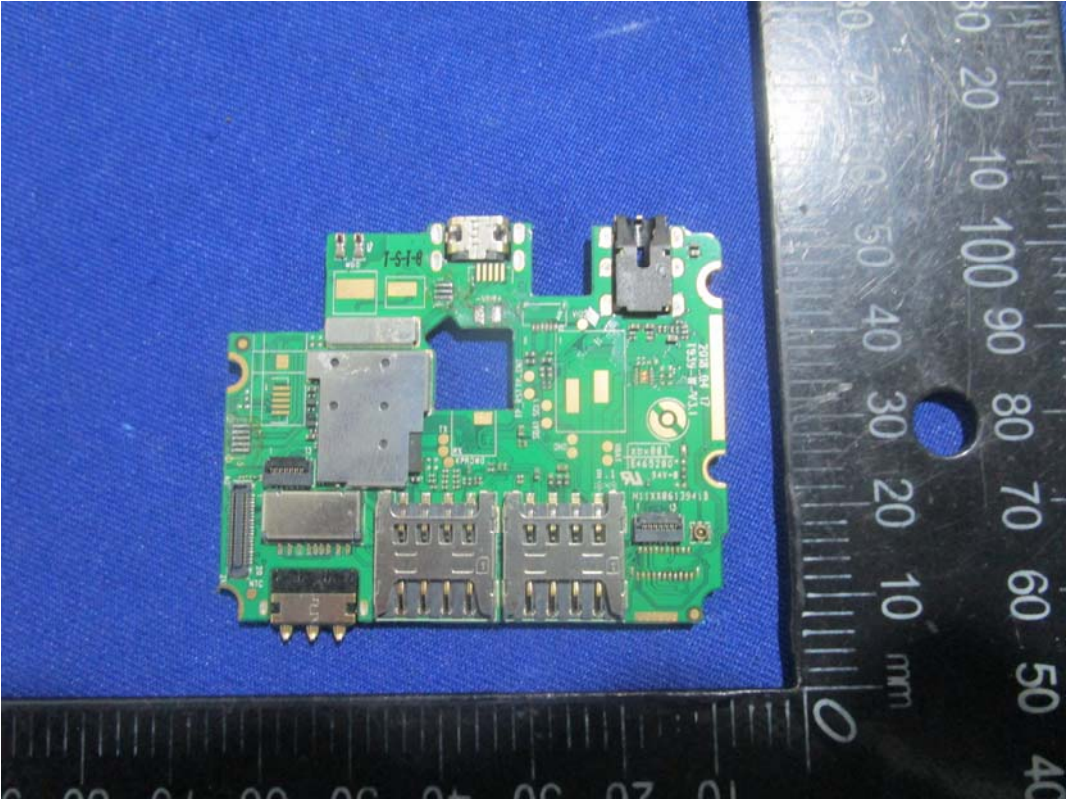


EXHIBIT C - EUT INTERNAL PHOTOGRAPHS







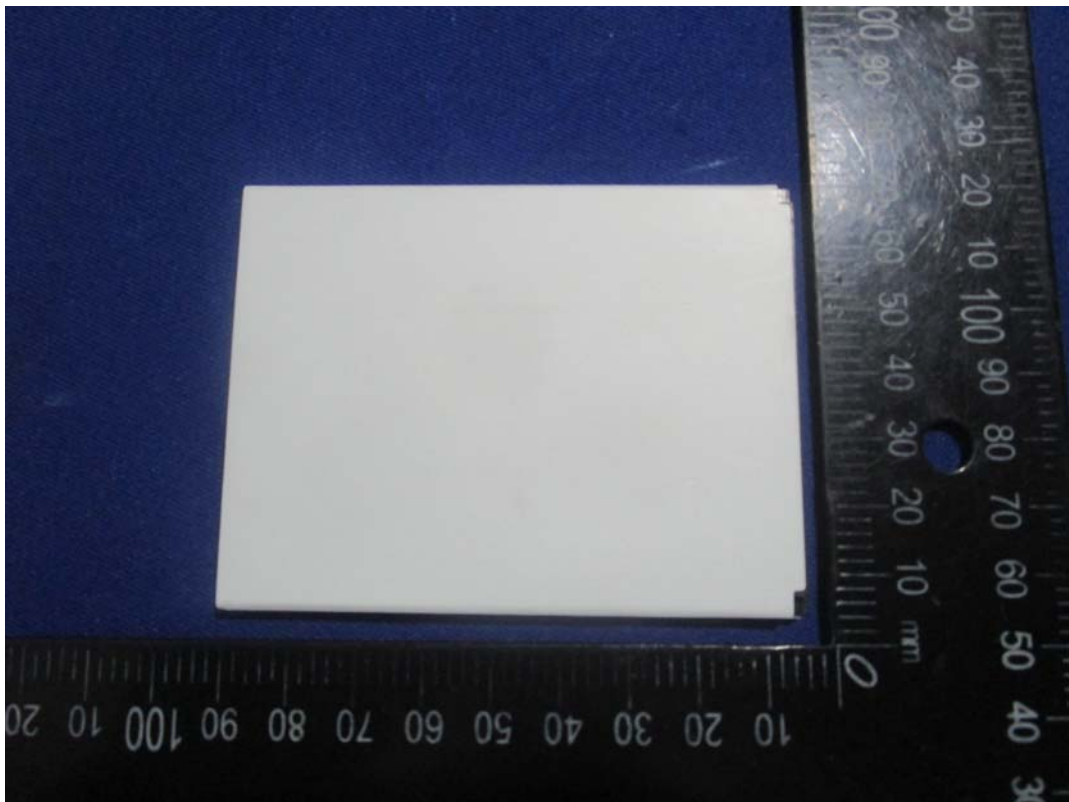


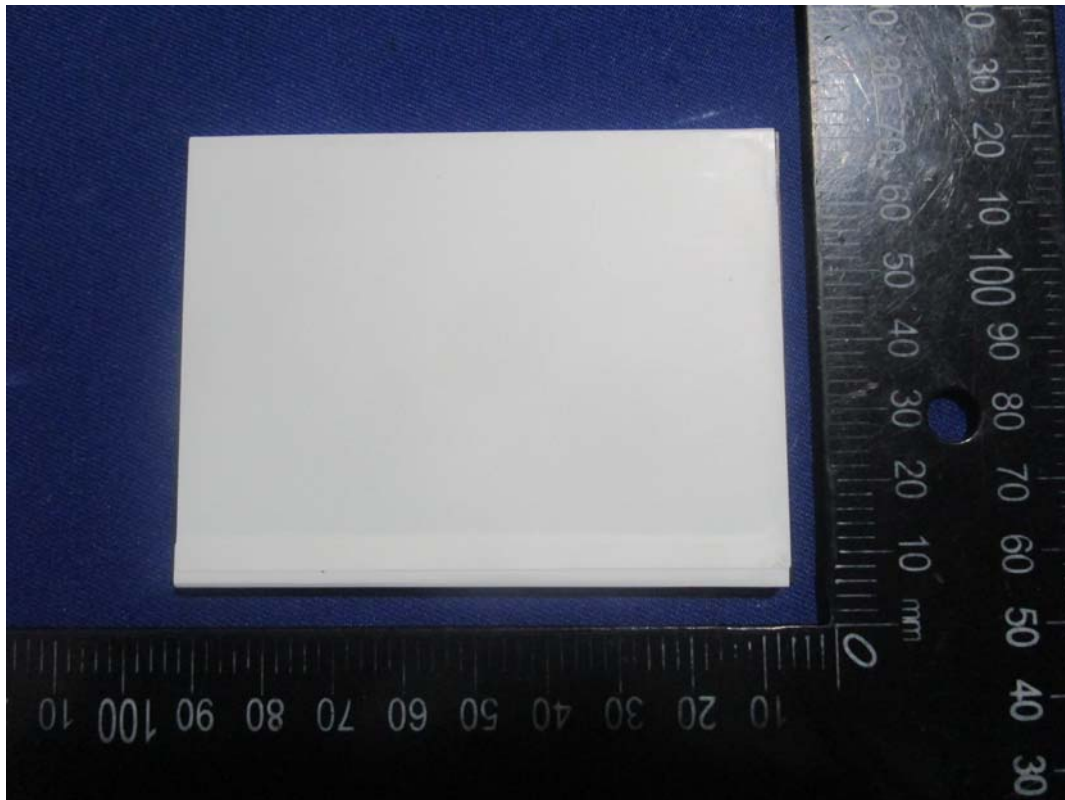


GSM&WCDMA Antenna



BT&WIFI Antenna





▲

PRO


3.8V LI-ION BATTERY
3.8V LI-ION BATERIA


3.8V LI-ION BATTERIE
3.8V LI-ION BATERIA


14.2Wh
14.2Wh



Li-ion Rechargeable Battery
3750mAh Model: X1
Restrictive Voltage: 4.35V
Charging Voltage: 3.8V

⚠ **Caution:**
 -Use the authorized charger only.
 -Never disassemble by yourself.
 -Never short-circuit the battery.
 -Dispose the battery properly.
 -Do not expose battery to open flames, could cause explosion.

GB/T 18287-2013











MADE IN CHINA