



DY-1000

Internet MP3 Music Player



Copyright(C)1999 DaiYoo Electronics.co.,Ltd

FCC WARNING

This equipment may generate or use radio frequency energy. Changes or modifications to this equipment may harmful interference unless the modifications are expressly approved in the instruction manual. The user could lose the authority to operate this equipment if an unauthorized change or modification is made.

NOTE:

This equipment has been tested and found to comply with the limited for a Class B digital device, pursuant to Part 15 of the FCC Rules. These limits are desired to provide reasonable protection against harmful interference in a residential installation. This equipment may cause harmful interference to radio communications, if it is not installed and used in accordance with the instructions. However, there is no guarantee that interference will not occur in a particular installation. If this equipment does cause harmful interference to radio or television reception, which can be determined by turning the equipment off and on, the user is encouraged to try to correct the interference by one or more of the following measures:

- Reorient or relocate the receiving antenna.
- Increase the separation between the equipment and receiver.
- Connect the equipment into an outlet on a circuit different from that to which the receiver is connected.
- Consult the dealer or an experienced radio / TV technician for help.

This device complies with part 15 of the FCC Rules. Operation is subject to the following two conditions:

(1) This device may not cause harmful interference, and (2) this device must accept any interference received, including interference that may cause undesired operation.

Copyright Notices

Under the copyright laws, neither the documentation nor the software may be copied, photocopied, reproduced, translated, or reduced to any electronic medium or machine-readable form, in whole or in part, without the prior written consent of DaiYoo Electronics Co., Ltd.

Copyright (c) 2000-2001 DaiYoo Electronics Co., Ltd.

INDEX

CHAPTER 1

How to connect DY-1000 and PC

1. Minimum System Configuration
2. Scope of Supply
3. Connecting DY-1000 and PC
4. Battery status

CHAPTER 2

How to link MPECHO software ?

How to install MPECHO Software ?

CHAPTER 3

How to use MPECHO Manager Software

CHAPTER 4

DY-1000 Player Overview

How to use DY-1000 MP3 Player

CHAPTER 5 – The explanation and characteristics of DY-1000

1. What is DY - 1000
2. The operation of DY – 1000
3. MP3 file sites
4. Product specification

CHAPTER 6

1. Precaution
2. Warranty conditions
3. Trouble-shooting
4. Regulatory notice

CHAPTER 1

How to connect DY – 1000 and PC.

This chapter explains how to link DY – 1000 and PC.

By using this method, you can transfer data file from PC to DY-1000.

1. Minimum System Configuration

- Microsoft Window 95 / 98/ME/, NT/2000
- CD ROM drive
- Should be higher than Pentium 100MHz Version
- 32 MB RAM
- Minimu 10 MB of hard disk space
- USB port is indispensable

2. Scope of Supply

- MP 3 Player
- PC Interface USB Cable Assembly
- Stereo Earphone
- AA size 1.5V alkaline battery
- Installation CD

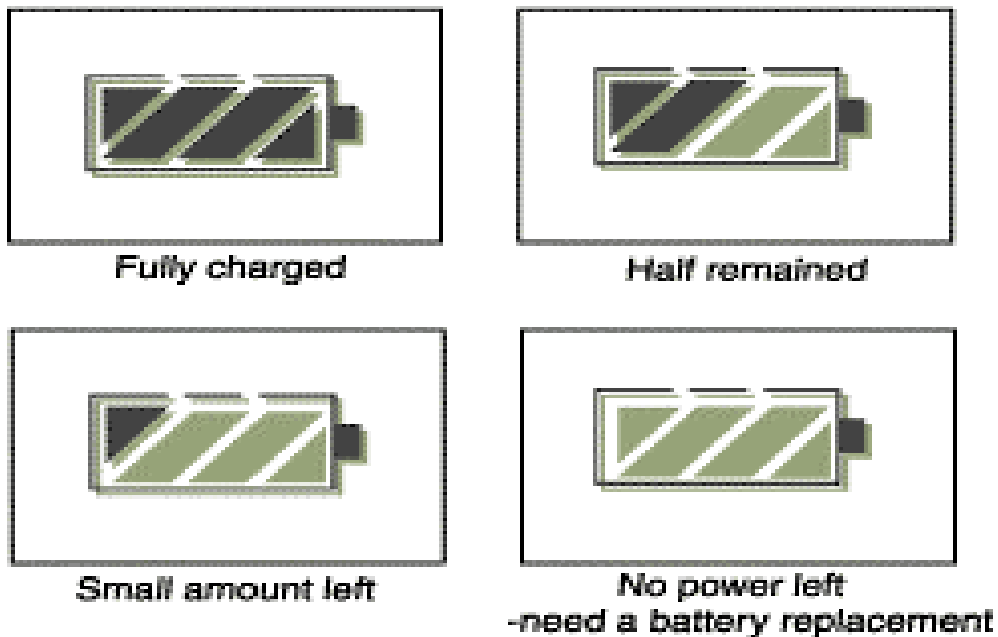
3. Connecting DY – 1000 and PC

Connect bigger 4 Pin connector of cable to USB port in PC and link smaller 4 pin connector to DY – 1000.

4. Battery status

The following figure shows the battery status lamp.

Battery status



The battery status indicator shows how much life remains on the DY-1000 player. When the battery is at full strength, the battery shaped indicator is fully filled in. When the battery supply is nearly empty, only the outline appears. This is the sign that the battery life is almost over. You should replace the battery at this time. The battery status indicator will be displayed in a few seconds after the player is turned on. With a fresh alkaline battery, the DY-1000 playback will last longer than normal batteries

CHAPTER 2

How to link MPECHO software

Connect PC I/F cable provided to the USB port of your PC and MPECHO will

Power on automatically.

You will see 'Add New Hardware Wizard' appear at the same time.

Follow below steps to install MPECHO and **USB driver** in your PC.

- ① Insert MPECHO installation CD into CD-ROM drive of your PC. Setup program starts automatically and installation of MPECHO begins.
- ② Installation will go on automatically and MPECHO will be registered in "CD-R" as Start Program Group.
- ③ Plug USB cable into MP3 player and USB port of PC. 'Add New Hardware Wizard' will automatically appear. Press 'Next' button then.



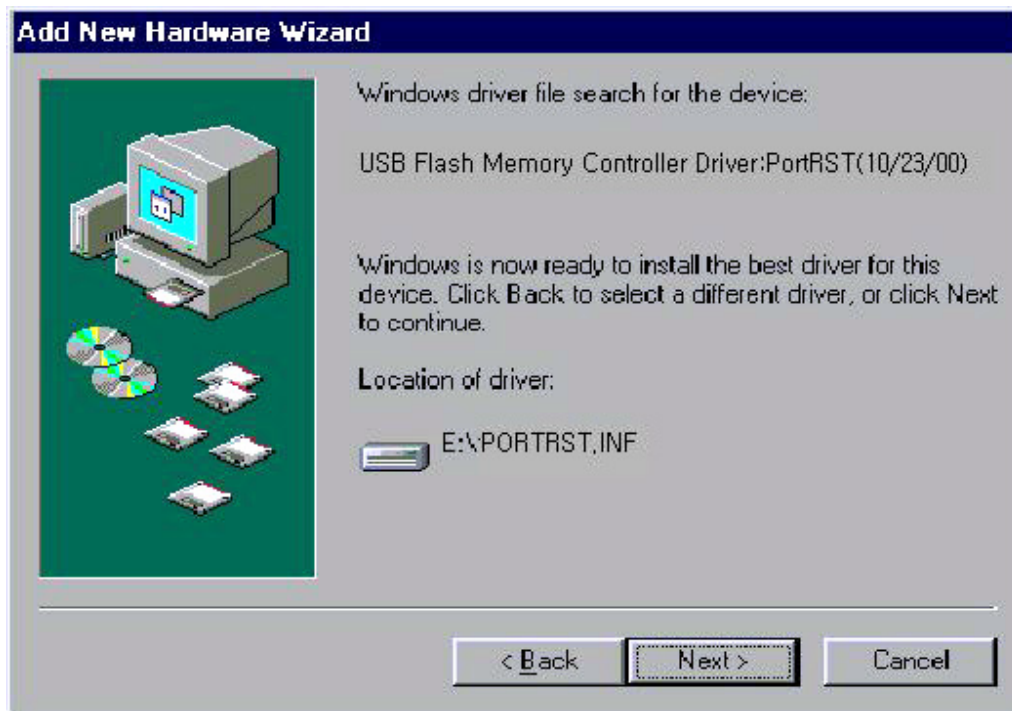
- ④ Follow direction of 'Add New Hardware Wizard' and press 'Next' button.



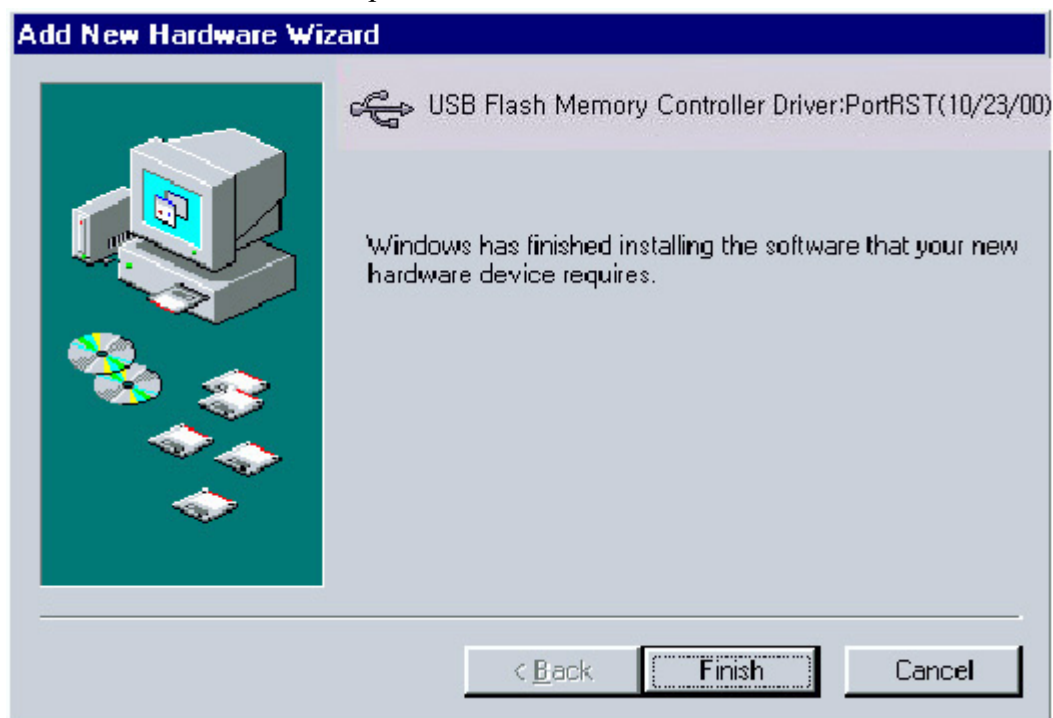
- ⑤ Select 'CD-ROM drive' and press 'Next' button.



- ⑥ Now suitable USB driver was searched. Press 'Next' button.



- ⑦ Press 'Finish' button to complete Installation of USB driver.



- ⑧ Reboot the PC for complete installation.
- ⑨ Repeat ③~⑤ above, then will be followed;
- Now click "Next" and "Finish" to complete-installation.

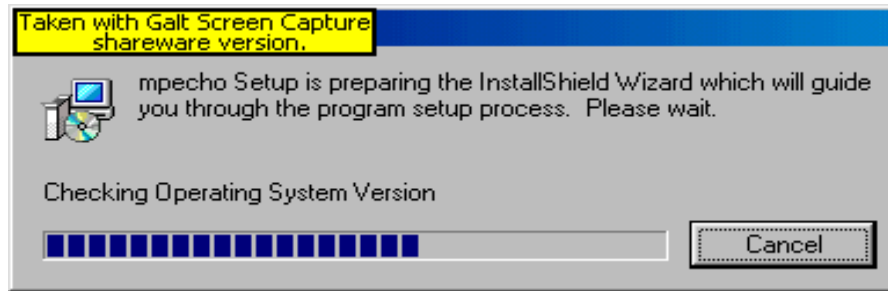


Note: When MPECHO can not recognize software, check if MPECHO is off, USB cable is not properly plugged or USB driver is not installed properly in your of PC.

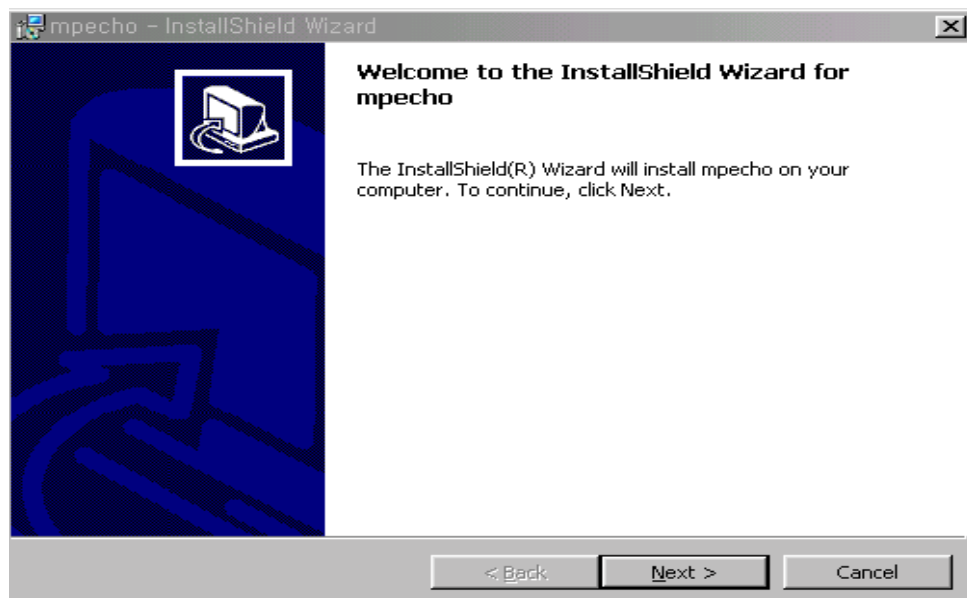
How to install MPECHO manager software

This chapter explains how to install MPECHO manager software that can communicate between PC. You should install software in Windows-compatible basis to operate perfectly.

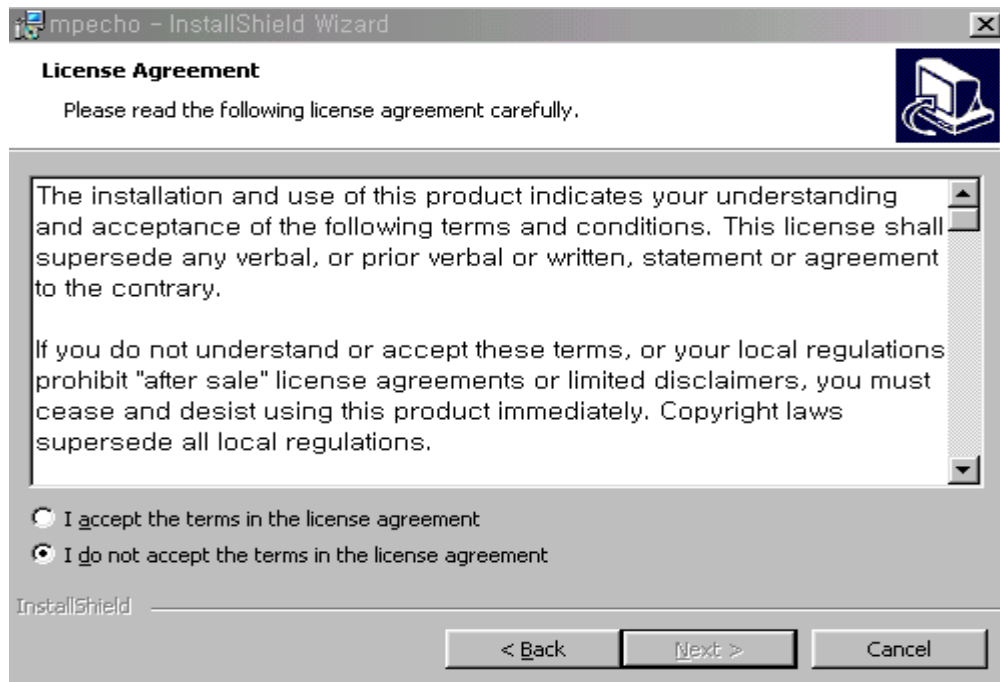
- 1) Insert installation CD in the drive, you can select “setup.exe.” on your screen.
- 2) The following screen appears:



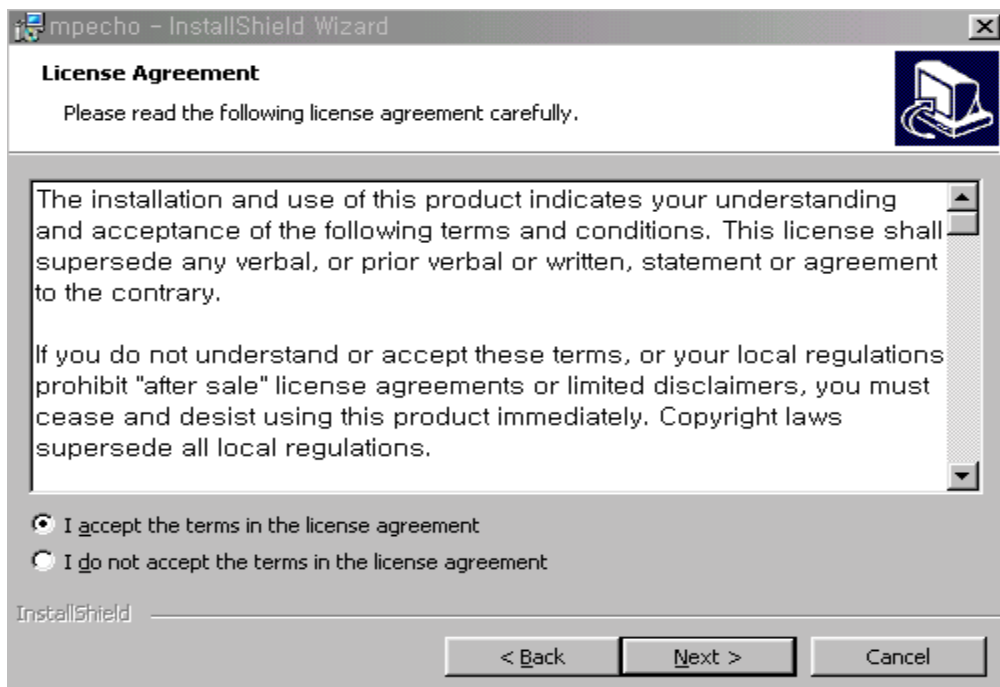
- 3) The following screen appears, press “Next”



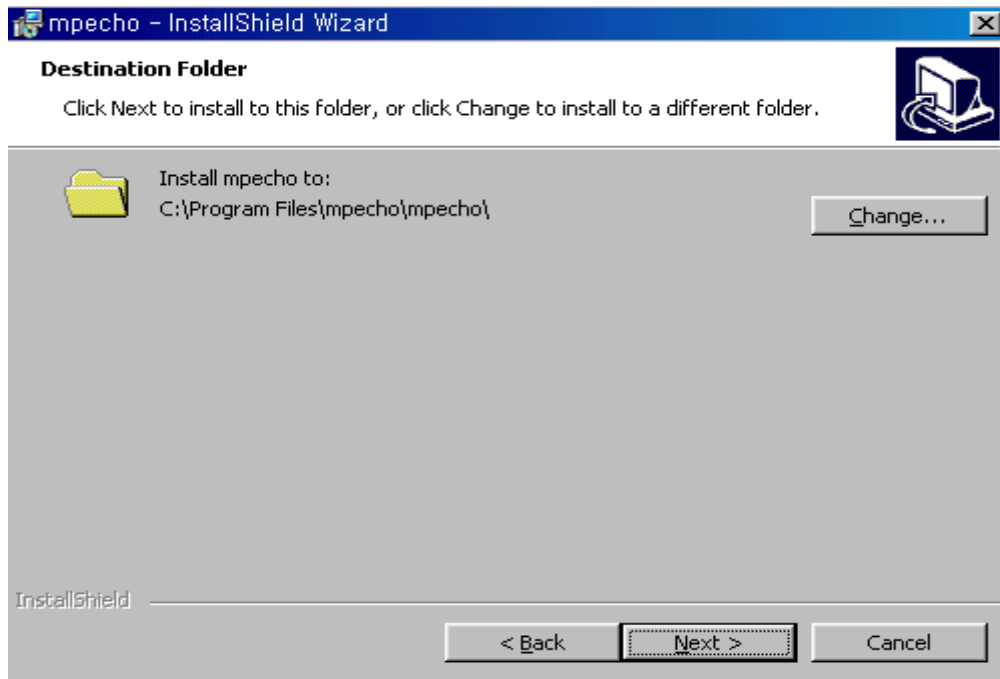
- 4) The following screen appears, Select “I accept” term



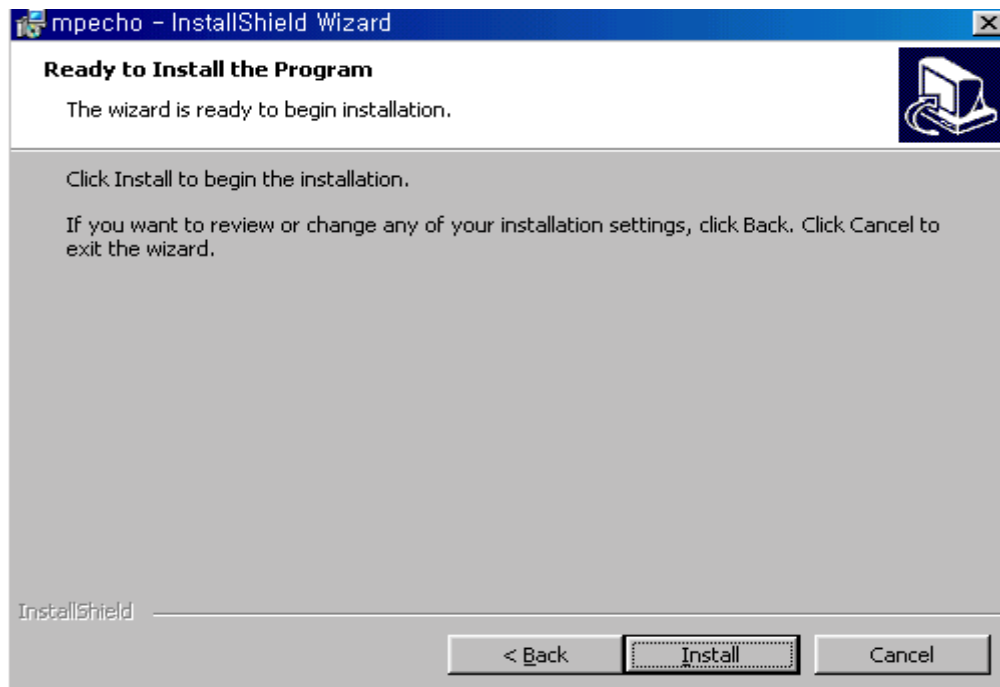
5) The following screen appears, Press “Next”



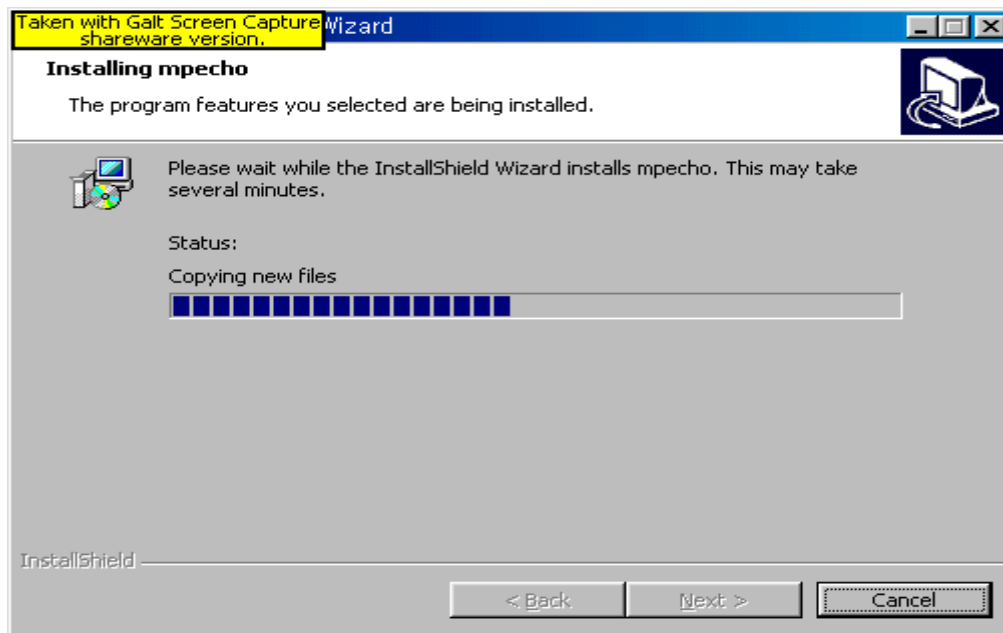
6) The following screen appears, Press “Next”



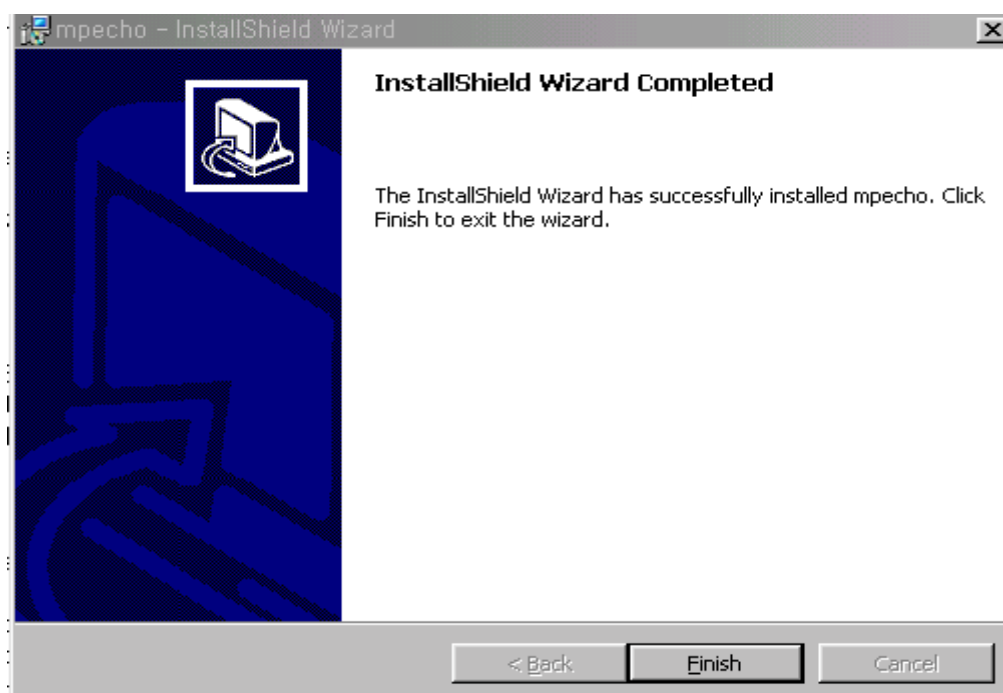
7) The following screen appears , Press “Install”



8) As the program components are being copied to the specified folder.



9) Installation is completed as following screen . Press “Finish”

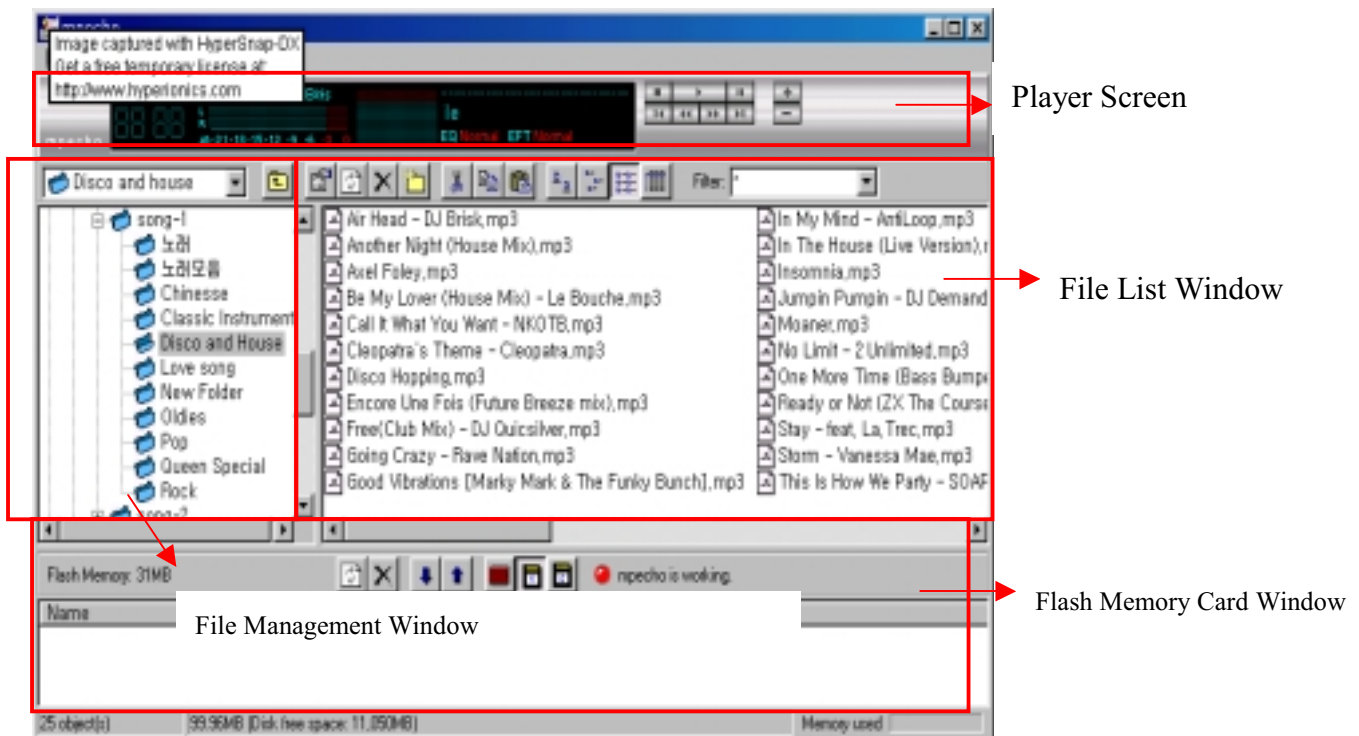


CHAPTER 3

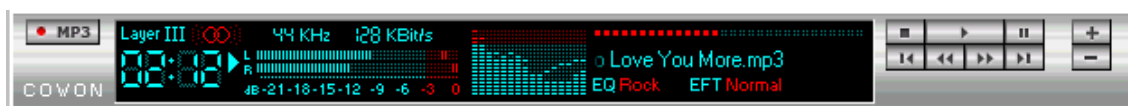
How to use MPECHO manager software.

The components of MPECHO manager

[Screenshot of MPECHO]



① Playback of .MP3, .WAV and audio CD and Creation of .MP3

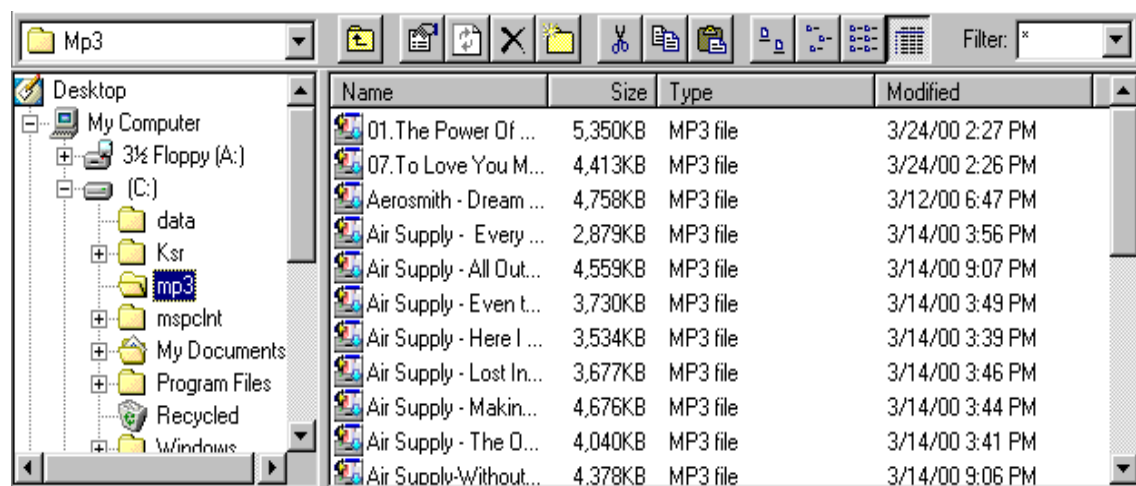


There are three ways to play MP3, WAV files and audio CD in MPECHO. First, you can play MP3, WAV files and audio CD tracks by double-clicking MP3, WAV files, and audio CD Tracks in the file list. Second, you can drag-n-drop files to the Player screen. Last, you can just press the PLAY button after selecting files in the File List Window. In the Player Screen, you can see how much a track was played and the title of the track.

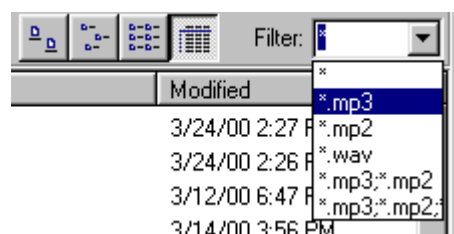
Two kinds of fancy spectrum are also available. Using control buttons in the right side, you can have functions of play, pause, stop, fast-forward, rewind and move to previous track and move to next track. Press +, - buttons to control volume. To change a point to be played in the current track, click the Position Bar in red.

To create MP3 files, press the MP3 encoding button in left upper side after selecting audio CD tracks you want to convert to MP3 files. (Optional)

② MP3 File Management



File management function of MPECHO is almost the same as Windows Explorer. The left side in the File Management Window shows you information about drives, attached to your PC, and the folders in them. The right side is the File List Window showing files in a given folder. This window will display all files in a given folder as default. However, you can display MP3 files only using the Filter feature in the upper right side.



Other functions of handling files such as Copy and Move are the same as Windows Explorer. This file management function allows you to manage your own MP3 files more easily and efficiently. For example, you may keep MP3 files for iAUDIO in

certain folder. Furthermore, you may classify them by singer just like a music album.

③ Management of Flash Memory card(MMC).



Flash Memory Card (or MMC) Window shown above in MPECHO controls flash memory cards inserted in MPECHO. You will see ‘mpecho is working’ with the red light on in right upper side if MPECHO is connected to PC properly. You can select a flash memory card (MMC) by pressing one of the flash memory card buttons. MP3 files transferred to flash memory cards in MPECHO will be listed with their file size in the below window. Remaining free disk space in flash memory cards will be also shown. Refer to below buttons for other functions.



Refresh : Reads the content of flash memory card (or MMC) again and displays it in the window.



Delete : Deletes MP3 files chosen in flash memory card (or MMC).



Download : Downloads MP3 files chosen from File management Window to flash memory card (or MMC).



Upload : Uploads files from flash memory card(or MMC) to PC hard disk.



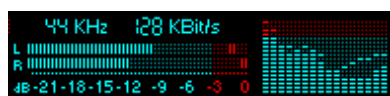
Select Flash memory card(or MMC) : Selects a memory card you want to try

in MPECHO. MPECHO provides two slots for memory card.

Note: Uploading MP3 files from flash memory cards to PC hard disk is blocked

Spectrums and Sound Effects of MPECHO

MPECHO provides fancy spectrum effects when you play MP3, .WAV and audio CD. If you'd like to try other spectrums other than the default one shown below, click the spectrum screen using the left mouse button.



[Default spectrum of MPECHO]

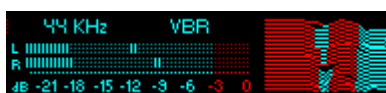
Spectrum can be set according to your own preferences. Refer to examples below.



[Spectrum example1]



[Spectrum example2]



[Spectrum example3]

You can enjoy not only fancy spectrums but also apply various sound effects and equalizers using MPECHO. NORMAL, POP, JAZZ, CLASSIC are five preset modes in equalizers. Mode will change in turn if you click the left mouse button.

When it comes to sound effect, you will never find a product that provides more sound effects than MPECHO does.


Normal, Room Reverb, Big Room, Hall Reverb, Stage Reverb, Stadium Reverb, Cathedral 1, Cathedral 2, Air Duct Reverb, Metallic Reverb, Simple Reverb, Alien 1, Alen 2, Bass Boost, Mega Bass Boost, Simple Echo, Distance Echo, Long Echo, Alpia Echo, Duble Echo, Strange FB1 and Strange FB2 are the options you can experience with MPECHO.




Tip: Click preset modes, in red, next to EQ and EFT by using left mouse button to change equalizer and effect.

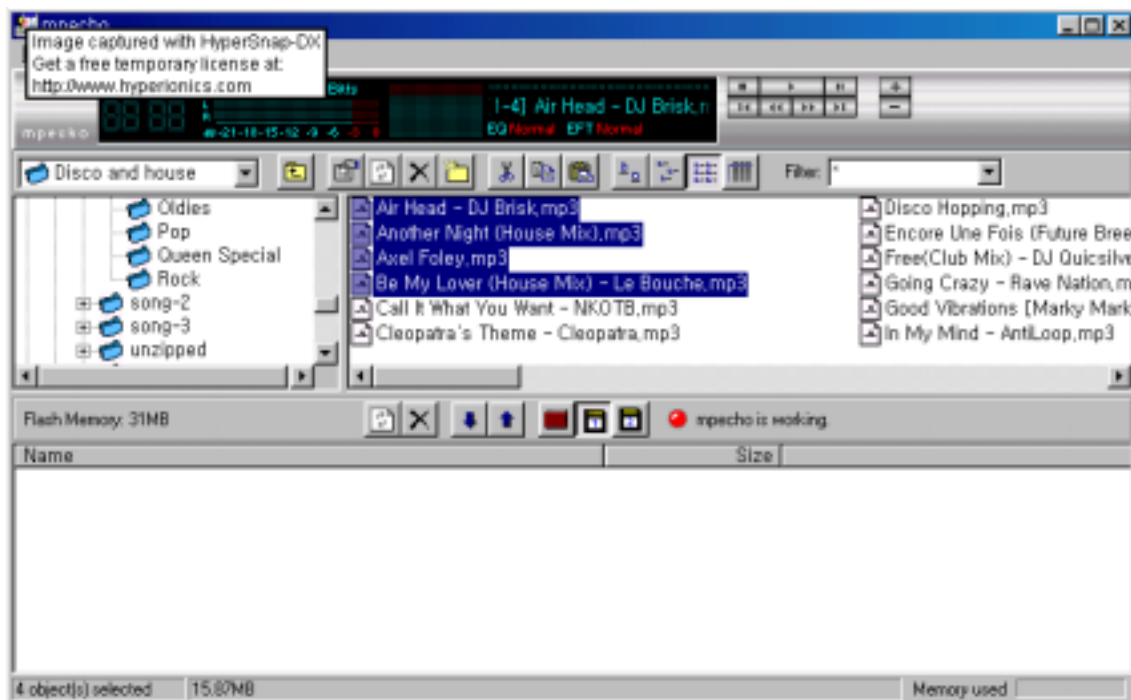
How to download MP3 files to MPECHO

It is very simple to transfer MP3 files to MPECHO. As mentioned before, select MP3 files from the File List Window in Jet-Shell. Just drag-n-drop them into Flash Memory

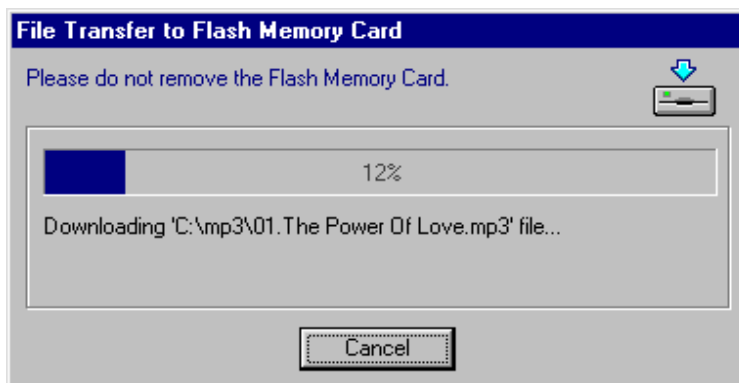
Card Window in MPECHO. Otherwise, click  the 'Download' button in the Flash Memory Card Window after selecting MP3 files from the file list in the File List Window in MPECHO.

MP3 files will be transferred to MPECHO through below procedures.

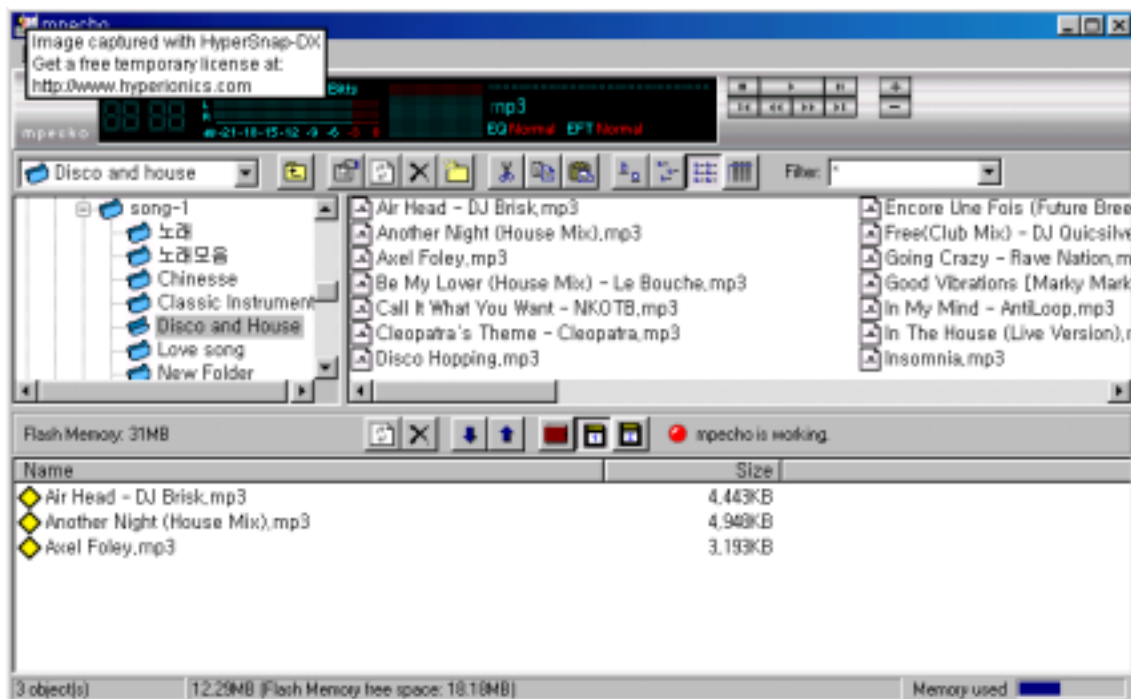
- ① Click  the 'Download' button after selecting MP3 files from the File List Window.



- ② MP3 files selected are being transferred to flash memory card(or MMC) in MPECHO.




③ MP3 file transfer to flash memory card(or MMC) in MPECHO is completed.



After completing file transfer, the mode line on the bottom shows you the size of each file transferred and available disk space in flash memory card(or MMC).


Tip: You can transfer files to flash memory cards in MPECHO just by drag-n-drop.

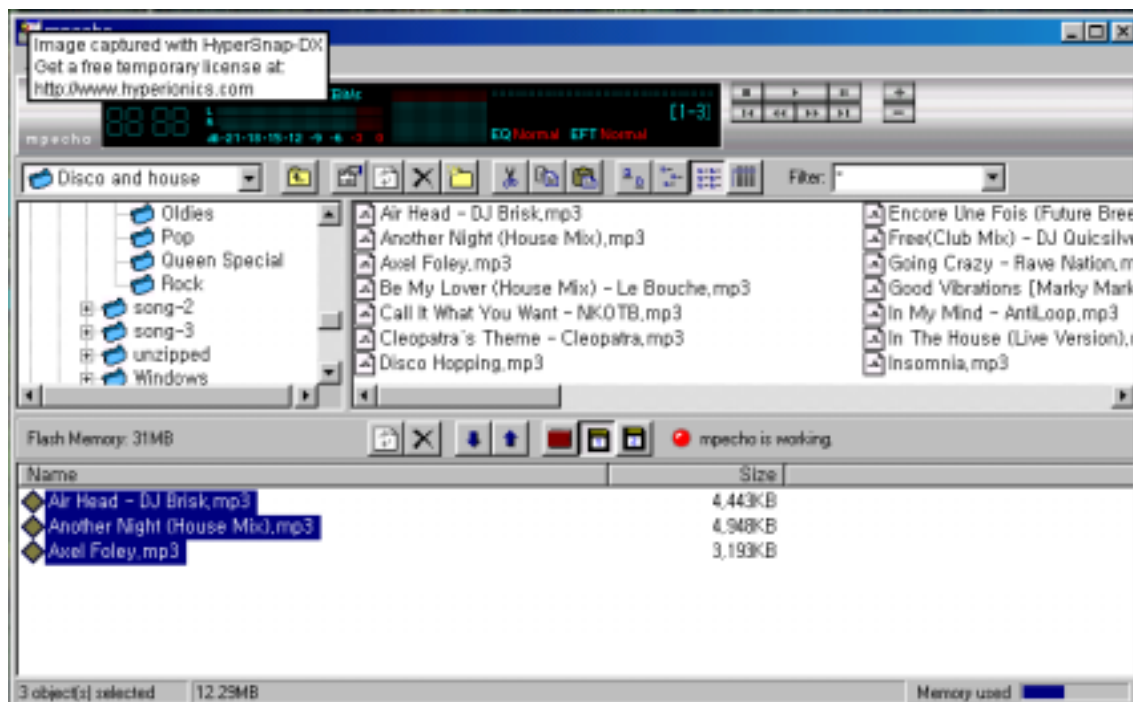
How to delete MP3 files in MPECHO.

Deletion of MP3 files in MPECHO is similar to Windows Explorer. Click  the

Delete button after selecting MP3 files in the Flash Memory Card(or MMC) Window.

MP3 files in MPECHO will be deleted through below procedures.

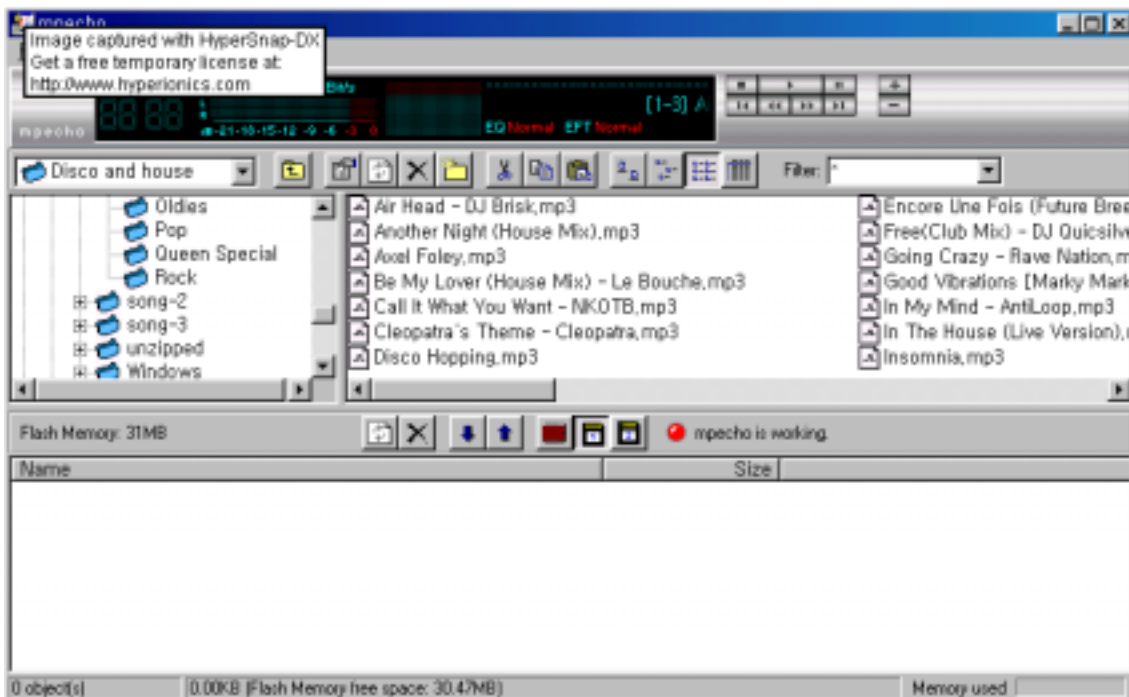
- ① Click  the Delete button after selecting MP3 files in the Flash Memory Card (or MMC) Window.



- ② Confirm if you are sure to delete files. Click 'Yes'.



- ③ Files will be deleted from flash memory card(or MMC) immediately.



Tip: If you press the right button of mouth after selecting files in Memory Card Window, pop-up menu appears. You can delete or transfer files in this menu, also.

How to format flash memory card(or MMC)

Formatting a flash memory card(or MMC) using MPECHO is just like formatting a hard disk. Acknowledge that all data will be erased in a flash memory card(or MMC) when you format it. A flash memory card(or MMC) will be formatted through below procedures.

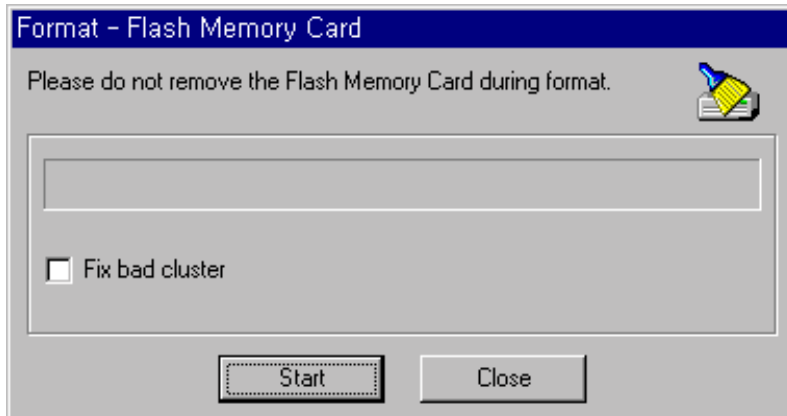
- ① Select the 'Format Flash Memory Card' bar in the File menu in MPECHO.



Tip: If you press the right button of mouth after positioning it at any empty space in Memory Card Window, pop-up menu appears. You can format a flash memory card (or

MMC) in this menu, also.

② 'Format-Flash Memory Card' window appears. Press 'Start' button to begin formatting flash memory card (or MMC).



Using 'Fix bad cluster' feature, you can detect and fix bad cluster while proceeding formatting. This will take a quite long time. Usually you are recommended to use Fast Format feature since you will rarely encounter bad cluster in flash memory card (or MMC).

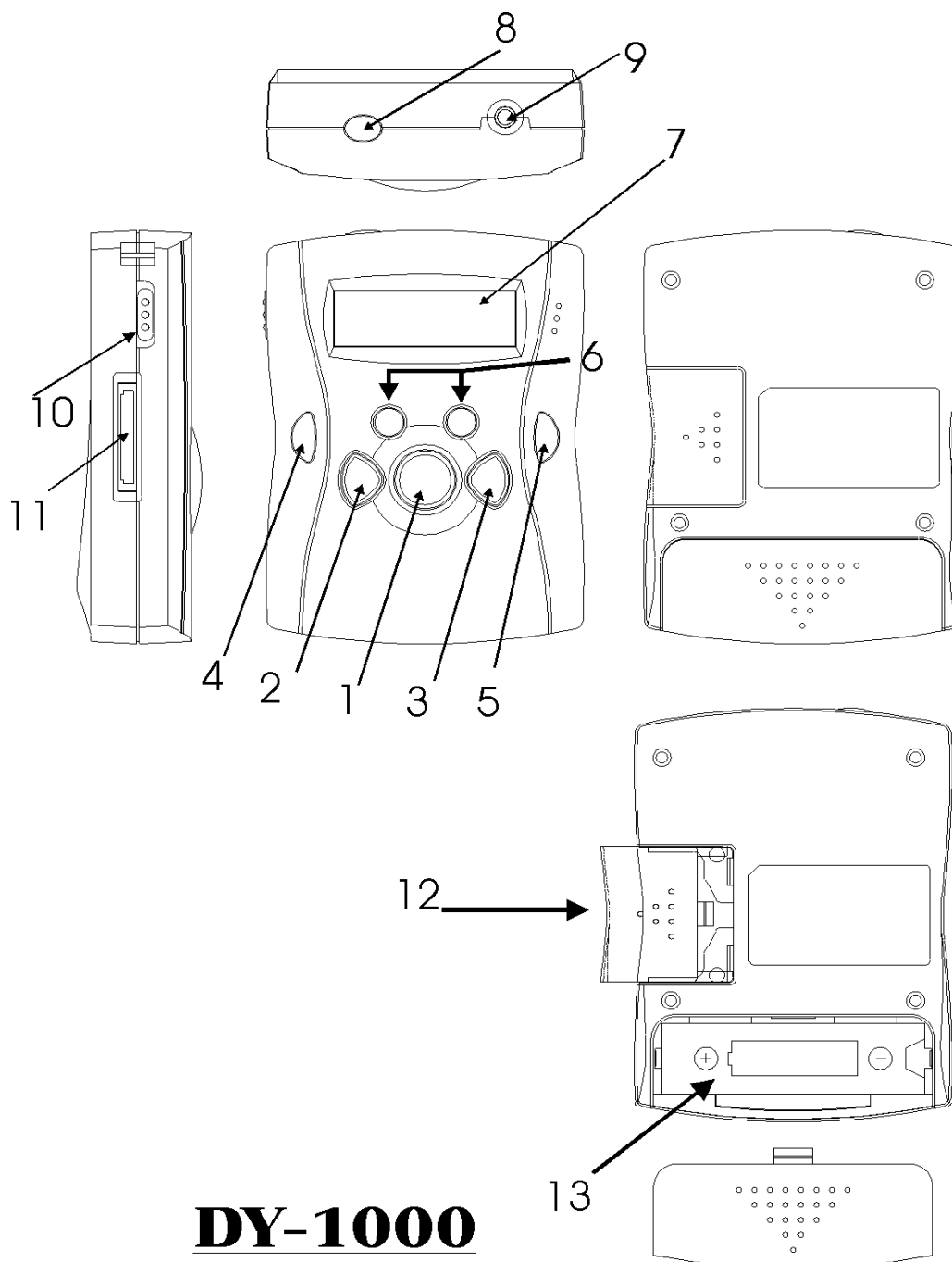
Tip: If you face transfer fail error in same position repeatedly, it is assumed that you have bad cluster in flash memory card (or MMC). Choosing 'Fix bad cluster' option is recommended in this case.

CHAPTER 4

DY-1000 Player Overview

The following illustration shows the various parts of the DY-1000 player.

It's features and functions are described as below:



1. **Play / Stop Key** - Plays, Stops or cancels the current operation
2. **SKIP- / REW Key** - Track down mode and REW mode operation
3. **SKIP+/FF Key** - Track up mode and FF mode operation
4. **INFO** - Set the start point and to cancel
5. **EQ Key** - Equalizing operation (Pop-Classic-Jazz-Rock)
6. **VOL Up / Down Key** - Volume up/down mode operation
7. **LCD display panel** - Displays the current information
8. **Mode Key** - Mode selecting operation
9. **Earphone Jack** - Connects to earphones, headsets
10. **Hold Key** - Prevents all buttons from operating accidental or Unintended contact
11. **USB connector** - Connects to smaller 4 pin plug on USB cable ass'y.
12. **MMC slots** - MMC inserting slots (2 MMC available)
13. **Battery Lid** - Insert the battery (2AA 1.5V alkaline battery)

How to use DY – 1000 (MPECHO)

This chapter explains the operation of MPECHO(MP3 Player).

1. **Earphone Jack** – Able to be connected with Earphone, Headphone or Speaker.

2. **LCD Display Panel**

Indicates its current mode – Play, Hold, Volume Level, Battery status and Player status.

3. Key Functions (MP3 Mode / FM Mode)

3 – 1. MP3 Mode

A. Play / Stop Key

- 1) Press the Play / Stop button for more than 1.5 seconds to **turn on** the power
- 2) Press the Play / Stop button for more than 1.5 seconds to **turn off** the power
- 3) In the Play mode, press the Play / Stop button for less than 1.5 seconds and it will **stop (pause) mode**.
- 4) In the Stop(pause) mode, press the Play / Stop button for less than 1.5 seconds and it will **play mode**.
- 5) When it turn on the power, in case of Flash and MMC, Flash memory will play first and MMC will play next.
- 6) If it turn on the power continuous, It will play continuously too.

B. EQ Key

- In the Play mode, press the EQ button for less than 1.5 seconds and it will play **EQ mode** (Pop-Classic-Jazz-Rock).

C. ◀ ◀ / ▶ ▶ (Skip / REW, FF Key)

- Press the SKIP / Rew, FF button for less than 1.5 seconds and it will play Skip Down / Up mode.
- Press the SKIP / Rew, FF button for more than 1.5 seconds and it will play Rew and FF mode.

D. ▲ ▼ (VOL Up/Down) Key

- Press this key and it will play in the volume up/down mode
- In the volume up/down mode, press the mode key for less than 1.5 seconds and it will play in **Bass, Treble** mode.

E. Mode Key

- In the Play mode, press the Mode key for less than 1.5 seconds and it will play REPEAT, RANDUM, SCAN.
- In the Play mode, press the Mode key for more than 1.5 seconds and it will play selecting to MP mode or FM radio mode.

F. INFO Key

- In the play mode, press the INFO key less than 1.5 seconds and it will play INFO function (To set the start point and press the INFO key again to Complete selection. To cancel the playing back and selected segment Press the INFO key one more time)

G. Hold Key

Lower the hold switch to lock the all the keys

3 – 2. FM Mode

A. **Play / Stop Key** and **Volume** up/down key operation is
The same as MP3 mode key operations.

B. **◀ ◀ / ▶ ▶ Key.**

- Press the key for less than 1.5 seconds and it will play in the **Tune Down / Up** mode.
- Press the key for more than 1.5 seconds and it will play in the **Seek Down / Up** mode.

C. **EQ Key (Preset station memory)**

- In the selection of FM frequency (Tune Down/Up, or Seek Down/Up), press the EQ key for less than 1.5 seconds, memory station will display on the LCD. In this display condition, you can select station memory (No.1 - No.6) using FF/REW key and press the EQ key for more than 1.5seconds, you can preset what your favorite FM frequency.

D. **INFO Key (Select station memory)**

- Press the INFO Key for less than 1.5 seconds and it will play Preset Up mode (No.1 - No.6).

CHAPTER 5

1. What is DY – 1000 ?

DY-1000 is portable Walkman size palm to listen to high quality music without using cassette tape or CD and with using MPEG1 Layer 3.

DY-1000 has a **32MB Built-in**(Flash memory)memory, it can be expandable Max 128MB(32MB * 4ea) and has **2 MMC slots** what can expand using 2 MMC (16, 32, 64MB) for bigger memory capacity. MP 3 files well known as high quality audio form is that compress the size of wave files by 1/12. Also, you can get a number of MP3 files at home without going to record shop. Through Internet, you can download wherever in the world and lawfully (you only have to pay the price of MP3 file to MP3 supplier). It is perfect for activities like jogging or walking , hiking –just about any activity you like to do.

2. The Operation of DY – 1000.

First of all, you should take legal MP3 files from Internet or CD to memorize in your computer and use DY-1000 manager to download MP3 files in your computer to memory in the DY-1000.

3. MP3 File sites

- www.mp3.com
- www.mp3-2000.com
- www.mp3now.com
- www.mpeg.org

- www.goodnoise.com
- www.musicmatch.com
- www.nordic.com
- www.mp3best.com
- www.mp3box.com
- www.audiorequest.com
- www.shopplaza.net
- www.howpc.com
- www.free-mp3s.net

4. Product Specification

1) DY-1000 Player

- | | |
|-------------------|--|
| Memory : | - Built-in 32MB (64, 128MB expandable) |
| | - 2 MMC slots for expandable 16,32,64MB MMC available (Sandisk co or Hitachi co MMC available) |
| Dimension : | - 82.7(L) * 61(W) * 19.5(H) (mm) |
| | - 3.25(L) * 2.4(W) * 0.77(H) (Inch) |
| Weight : | - 70g(0.154lb) without battery |
| Display : | - 7 Segments 18 Icons |
| PC Interface : | - USB cable (Big and Small 4 pin connector) |
| Power : | - One 1.5Volt AA size Alkaline battery |
| Frequency Range : | - 20 Hz - 20 KHz |
| Distortion Rate : | - 0.05 % or less |
| S/N Ratio : | - 90 dB |
| Others : | - Battery Compartment |

- 2 MMC slots for additional MMC(16,32,64MB)
- USB port connector(Big and Small 4 pin connector)
- Earphone jack
- Play/Stop forward, backward, volume select and function buttons.
- Hold switch

2) Accessories

- AA size 1.5 V Alkaline battery (1)
- Earphone (1)
- USB cable assembly (4 pin connector)
- Installation CD (1)
- User's manual (1)

CHAPTER 6

Appendix

This Appendix chapter shows the precautions and warranty conditions for DY-1000.

1. Precaution

Following statements are the precautions that the users should always keep in mind. Any violation of one or more of the following precautions may cause damage and Will void the warranty.

1) Avoid heat, moisture and static electricity.

Please avoid the place that can damage DY-1000 such as bathroom, around fireplace and direct sun light.

2) Impact

In case you drop off the player, it can be great damage.

3) Cleaning

Do not use liquid or aerosol cleaners. Use with soft and dry cloth.

4) Battery

If the battery wears out, it is time to replace with a new battery.

2. Warranty conditions

DY-1000 will be repaired or replaced for as long as one year from the date of purchase.

The dealers that distribute the DY-1000 units will repair or replace the DY-1000 unit and its related accessories for one year from the date of purchase if the DY-1000 fail to operate properly due to factory defects in materials or workmanship during assembly or shipping. Claims of defective players can only be made within the warranty period. Any other operation not considered under the normal usage and operation of the player for its intended purpose will void this warranty and the customers right to claim a defective player.

During the warranty period, DaiYoo or its DY-1000 distributors will, at its discretion, repair or replace a defective unit at no charge to the customer. This is the customer's only option for defective product repairs. For product repairs, DY-1000 reserves the right to use new or reconditioned parts as they are needed. Replacement equipment, parts and accessories are guaranteed with the player for the same period (one year). Replaced equipment, parts, and accessories will become the property of DaiYoo and its suppliers.

If the problem is due to the user's failure to use the product as directed by the User's Guide, the warranty is void. However, a service representative at a local DY-1000 retailer may be able to direct the customer on how to correct the problem. Any repairs made after the end of the warranty will be charged to the customer.

The following is a list of circumstances and conditions that are not covered in the warranty. Any claims of defects or damage that resulted from any one or more of the following will become the responsibility of the customer alone.

1. Misuse, abuse, improper installation, or alteration of the product by the users
2. Attempts by anyone other than DaiYoo or its authorized distributors to repair or disassembled the product
3. Accidents, mishandling or neglect of the product after delivery to the user

4. Use of the unit of accessories in other than its normal and intended usage
5. Food or liquid spills
6. Interference from or with other electronic devices
7. Damage to the outside surface or other exposed parts due to customer normal wear and tear
8. Use of accessories, attachments and other equipment not provided by DaiYoo
9. Fluctuations in electric power sources
10. Illegal use of the product
11. Any other manner which DaiYoo deems as improper usage of the product

3. Trouble-shooting

1) When the player does not work

- Check the battery. Is it put correctly ?
- Check the battery. Is it wasting all energy ?
- Check the hold button.
- Check the memory . Initialize the MPECHO manager.
- Remove the battery and put again.

2) If you can not download

- Check the connection between DY-1000 and PC.
 - Check memory capability.
- If you waste all the power of battery, you can use another battery.

3) Data damage or loss

- During the downloading, data can be damaged because of instability.

4) Before disconnect the cable

Before disconnect the cable, please remove pin connector from DY-1000 after finishing the data transfer.

5) Cassette adopter

You may use a cassette adapter for a car stereo system to listen to the DY-1000. Connect the plug of the cassette adapter with the earphone jack of the DY-1000 player and insert the cassette adapter in the car stereo player.

6) The volume tone is not fixed.

While making MP3 files using encoder software in the MP3 player, depending on the power of tone, the sound can be different.

4. Regulatory notice

Declaration of Conformity

<United States>

FCC Declaration of Conformity

PRODUCT NAME : MPECHO – Portable MP3 Player.

MODEL NUMBER : DY-1000

FCC RULES: TESTED TO COMPLY WITH FCC PART 15, CLASS B

OPERATION ENVIRONMENT: FOR HOME OR OFFICE USE

FCC COMPLIANCE STATEMENT:

This device complies with part 15 of the FCC Rules. Operation is subject to the following two conditions:

(1) This device may not cause harmful interference, and (2) this device must accept any interference received including interference that may cause undesired operation.

INFORMATION TO USER:

This equipment has been tested and found to comply with the limits of a Class B digital device, pursuant to part 15 of the FCC Rules. These limits are designed to provide reasonable protection against harmful interference in a residential installation. This equipment generates, user and can radiate radio frequency energy and, if not installed and used in accordance with the instructions, may cause harmful interference to radio communications. However, there is no guarantee that interference will not occur in a particular installation, if this equipment does cause harmful interference to radio or television reception, which can be determined by turning the equipment off and on, the user is encouraged to try to correct the interference by one or more of the following measures:

1. Reorient / Relocate the receiving antenna.
2. Increase the separation between the equipment and receiver.
3. Connect the equipment into an outlet on a circuit different from that to which the receiver is connected.
4. Consult the dealer or an experienced radio / TV technician for help.

CAUTION: Changes or modifications not expressly approved by the manufacturer responsible for compliance could void the user's authority to operate the equipment.

<Europe>

Declaration of Conformity

according to the EMC Directive, 89/336/EEC, including amendments by the CE marking Directive, 93/68/EEC.

Type of Equipment : Portable MP3 Player

Brand Name of Trade Mark : MPECHO

Type Designation : DY-1000

Manufacturer's name, address, telephone & fax number:

DaiYoo Electronics Co.,Ltd

85-30, Parkdal-dong, Manan-gu, Anyang-city,

Kyunggi-do. Korea. 430-031

Tel : 82-31-466-6570/2

Fax : 82-31-469-1193