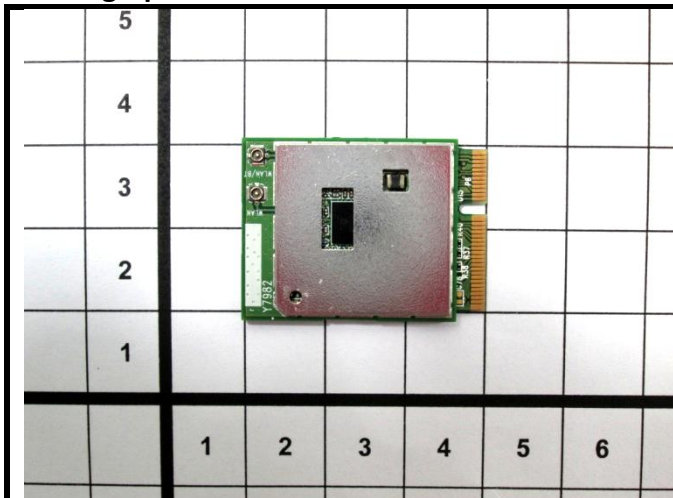


FCC SAR Test Report

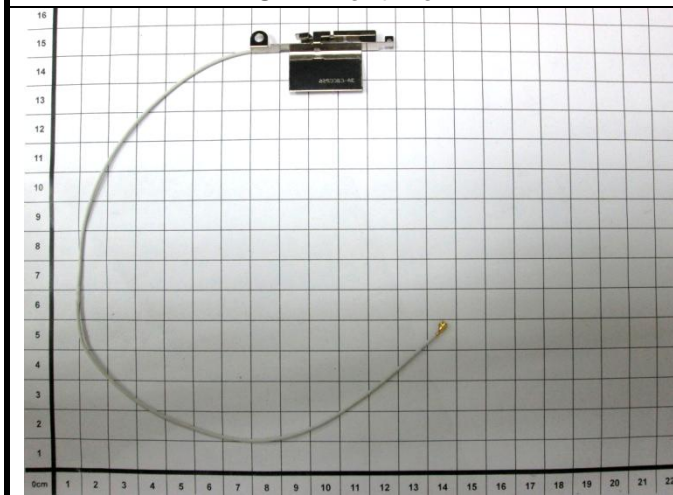
<Photographs of EUT>



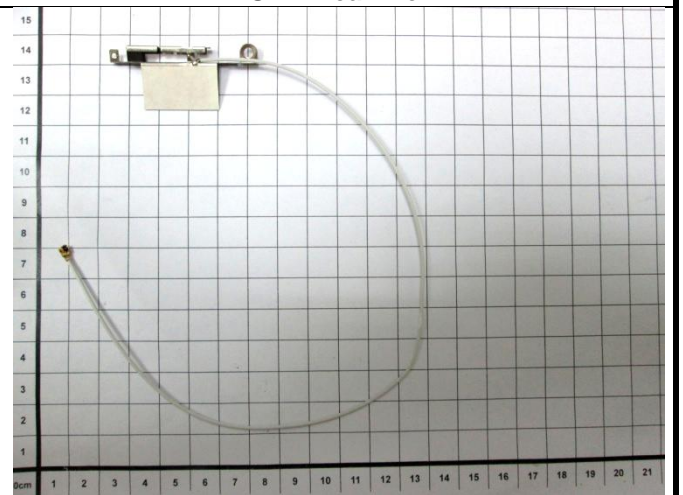
EUT – Front View



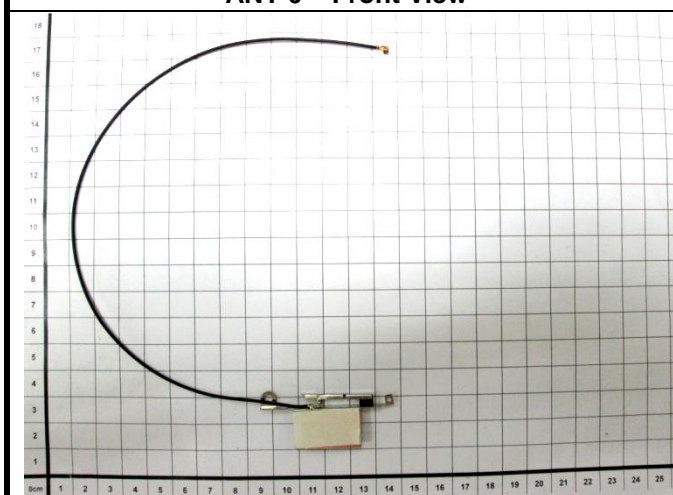
EUT – Rear View



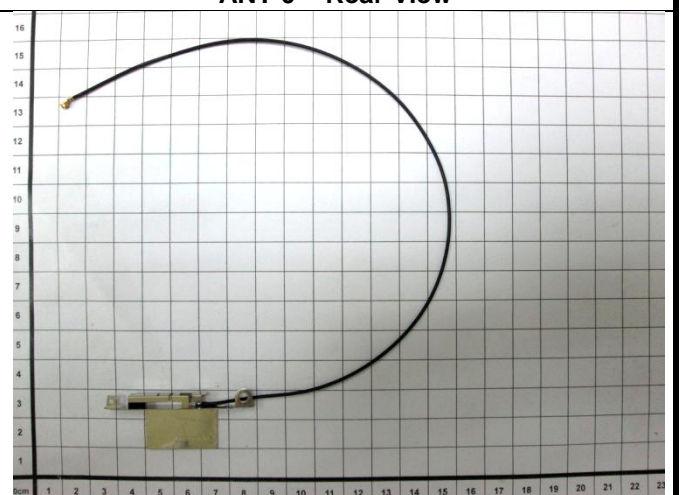
ANT-0 – Front View



ANT-0 – Rear View



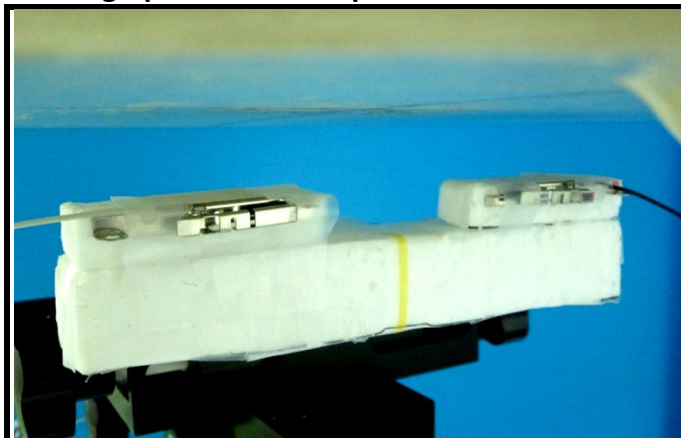
ANT-1 – Front View



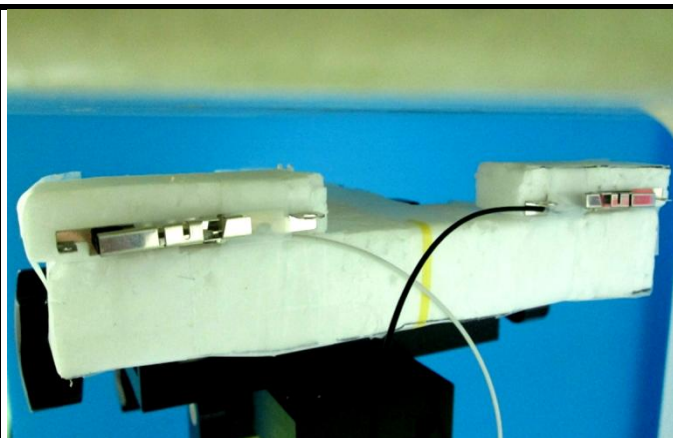
ANT-1 – Rear View

FCC SAR Test Report

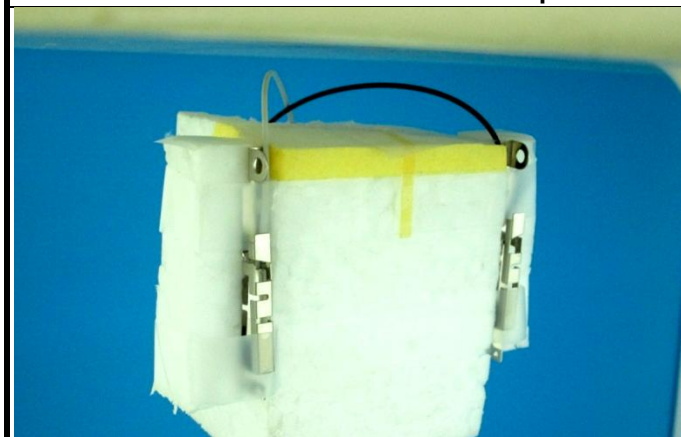
<Photographs of SAR Setup>



Front Face of EUT with 2 cm Gap



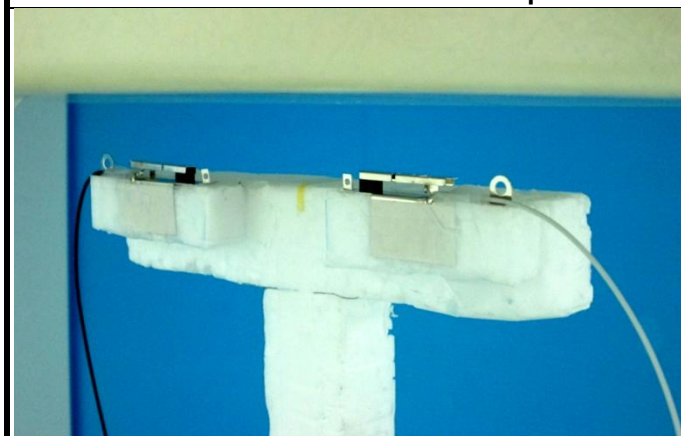
Rear Face of EUT with 2 cm Gap



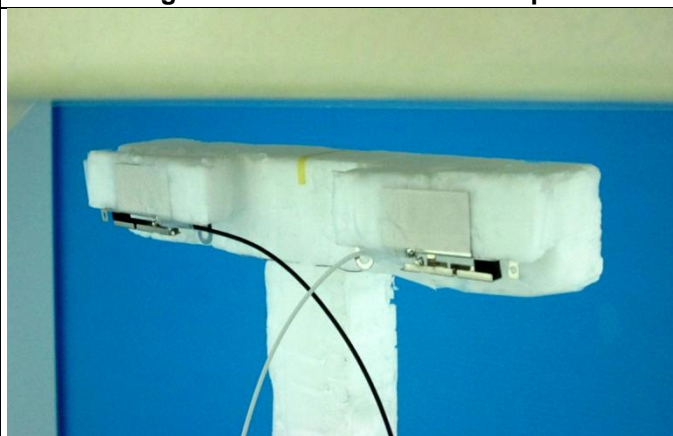
Left Side of EUT with 2 cm Gap



Right Side of EUT with 2 cm Gap



Top Side of EUT with 2 cm Gap



Bottom Side of EUT with 2 cm Gap

Note: The separation distance between these two antennas is 3 cm.