

FCC SAR Test Report

FCC ID: PPD-QCNFA344AH

Project No. : 2006C134
Equipment : 802.11a/b/g/n/ac+BT 4.1 M.2 2230 Type Card
Brand Name : Qualcomm Atheros
Test Model : QCNFA344A
Series Model : N/A
Date of Receipt : Jun. 15, 2020
Date of Test : Jul. 07, 2020 ~ Jul. 08, 2020
Issued Date : Sep. 22, 2020
Report Version : R04
Test Sample : Engineering Sample No.: DG2020061568
Standard(s) : Please refer to page 2.
Applicant : Qualcomm Atheros, Inc.
Address : 1700 Technology Drive, San Jose, CA 95110
Manufacturer : Qualcomm Atheros, Inc.
Address : 1700 Technology Drive, San Jose, CA 95110

The above equipment has been tested and found compliance with the requirement of the relative standards by BTL Inc.



Prepared by : Seven Lu



Approved by : Herbert Liu



Certificate #5123.02

Add: No.3, Jinshagang 1st Road, Shixia, Dalang Town,Dongguan, Guangdong, China.

Tel: +86-769-8318-3000

Web: www.newbtl.com

Standard(s) : **ANSI Std C95.1-1992** Safety Levels with Respect to Human Exposure to Radio Frequency Electromagnetic Fields, 3 kHz – 300 GHz. (IEEE Std C95.1-1991)

IEEE Std 1528-2013 Recommended Practice for Determining the Peak Spatial-Average Specific Absorption Rate (SAR) in the Human Head from Wireless Communications Devices: Measurement Techniques

KDB616217 D04 SAR for laptop and tablets v01r02
KDB447498 D01 General RF Exposure Guidance v06
KDB248227 D01 802.11 Wi-Fi SAR v02r02
KDB865664 D01 SAR measurement 100 MHz to 6 GHz v01r04
KDB865664 D02 SAR Reporting v01r02
KDB690783 D01 SAR Listings on Grants v01r03

Declaration

BTL represents to the client that testing is done in accordance with standard procedures as applicable and that test instruments used has been calibrated with standards traceable to international standard(s) and/or national standard(s).

BTL's reports apply only to the specific samples tested under conditions. It is manufacture's responsibility to ensure that additional production units of this model are manufactured with the identical electrical and mechanical components. **BTL** shall have no liability for any declarations, inferences or generalizations drawn by the client or others from **BTL** issued reports.

The report must not be used by the client to claim product certification, approval, or endorsement by NIST, A2LA, or any agency of the U.S. Government.

This report is the confidential property of the client. As a mutual protection to the clients, the public and ourselves, the test report shall not be reproduced, except in full, without our written approval.

BTL's laboratory quality assurance procedures are in compliance with the **ISO/IEC 17025** requirements, and accredited by the conformity assessment authorities listed in this test report.

BTL is not responsible for the sampling stage, so the results only apply to the sample as received.

The information, data and test plan are provided by manufacturer which may affect the validity of results, so it is manufacturer's responsibility to ensure that the apparatus meets the essential requirements of applied standards and in all the possible configurations as representative of its intended use.

Limitation

For the use of the authority's logo is limited unless the Test Standard(s)/Scope(s)/Item(s) mentioned in this test report is (are) included in the conformity assessment authorities acceptance respective.

Please note that the measurement uncertainty is provided for informational purpose only and are not use in determining the Pass/Fail results.

Table of Contents	Page
REPORT ISSUED HISTORY	6
1 . RF EMISSIONS MEASUREMENT	7
1.1 TEST FACILITY	7
1.2 MEASUREMENT UNCERTAINTY	7
2 . GENERAL INFORMATION	8
2.1 GENERAL DESCRIPTION OF EUT	8
2.2 STATEMENT OF COMPLIANCE	9
2.3 LABORATORY ENVIRONMENT	9
2.4 MAIN TEST INSTRUMENTS	10
3 . SAR MEASUREMENTS SYSTEM CONFIGURATION	11
3.1 SAR MEASUREMENT SET-UP	11
3.1.1 TEST SETUP LAYOUT	11
3.2 DASY5 E-FIELD PROBE SYSTEM	12
3.2.1 PROBE SPECIFICATION	12
3.2.2 E-FIELD PROBE CALIBRATION	13
3.2.3 OTHER TEST EQUIPMENT	14
3.2.4 SCANNING PROCEDURE	15
3.2.5 SPATIAL PEAK SAR EVALUATION	16
3.2.6 DATA STORAGE AND EVALUATION	17
3.2.7 DATA EVALUATION BY SEMCAD	18
4 . SYSTEM VERIFICATION PROCEDURE	20
4.1 TISSUE VERIFICATION	20
4.2 SYSTEM CHECK	21
4.3 SYSTEM CHECK PROCEDURE	21
5 . SAR MEASUREMENT VARIABILITY AND UNCERTAINTY	22
5.1 SAR MEASUREMENT VARIABILITY	22
6 . OPERATIONAL CONDITIONS DURING TEST	23
6.1 SAR TEST CONFIGURATION	23
6.1.1 WIFI TEST CONFIGURATION	23
6.2 TEST POSITION	25
6.2.1 NOTEBOOK MODE	25
6.2.2 TABLET MODE	25
7 . TEST RESULT	27
7.1 CONDUCTED POWER RESULTS	27
7.1.1 CONDUCTED POWER MEASUREMENTS OF WIFI 2.4G	27

Table of Contents	Page
7.1.2 CONDUCTED POWER MEASUREMENTS OF WIFI 5.2G	30
7.1.3 CONDUCTED POWER MEASUREMENTS OF WIFI 5.3G	33
7.1.4 CONDUCTED POWER MEASUREMENTS OF WIFI 5.6G	36
7.1.5 CONDUCTED POWER MEASUREMENTS OF WIFI 5.8G	42
7.1.6 CONDUCTED POWER MEASUREMENTS OF BT	45
7.2 SAR TEST RESULTS	46
7.2.1 SAR MEASUREMENT RESULT	47
7.3 MULTIPLE TRANSMITTER EVALUATION	50
7.3.1 STAND-ALONE SAR TEST EXCLUSION	51
7.3.2 SIMULTANEOUS TRANSMISSION CONDITIONS	52
7.3.3 SAR UMMATION SCENARIO	53
7.3.4 SIMULTANEOUS TRANSMISSION CONLCUSION	54
APPENDIX	59
1. TEST LAYOUT	59
Appendix A. SAR Plots of System Verification	
Appendix B. SAR Plots of SAR Measurement	
Appendix C. Calibration Certificate	
Appendix D. Photographs of the Test Set-Up	

REPORT ISSUED HISTORY

Report Version	Description	Issued Date
R00	Original Issue.	Jul. 15, 2020
R01	Changed the model name of implement platform on page 9.	Jul. 22, 2020
R02	Added the standalone SAR test exclusion of BT in section 7.3.	Jul. 29, 2020
R03	1. The conducted power is updated. 2. The SAR test results are updated. 3. The transmit simultaneous result is updated.	Sep. 17, 2020
R04	1. The Max. SAR of WiFi 5G is updated. 2. The conducted power is updated. 3. The SAR test results are updated. 4. The transmit simultaneous result is updated. 5. The SPLSR results are updated.	Sep. 22, 2020

1. RF EMISSIONS MEASUREMENT

1.1 TEST FACILITY

The test facilities used to collect the test data in this report is **SAR room** at the location of No.3, Jinshagang 1st Road, ShiXia, Dalang Town, Dong Guan, China.523792

1.2 MEASUREMENT UNCERTAINTY

Note: Per KDB865664 D01 SAR Measurement 100 MHz to 6 GHz, when the highest measured 1-g SAR within a frequency band is < 1.5 W/kg, the extensive SAR measurement uncertainty analysis described in IEEE Std 1528-2013 is not required in SAR reports submitted for equipment approval. The equivalent ratio (1.5/1.6) is applied to extremity and occupational exposure conditions.

2. GENERAL INFORMATION

2.1 GENERAL DESCRIPTION OF EUT

Equipment	802.11a/b/g/n/ac+BT 4.1 M.2 2230 Type Card					
Test Model	QCNFA344A					
Modulation	WiFi(DSSS/OFDM), BT(GFSK/ π /4-DQPSK/8-DPSK)					
Operation Frequency Range(s)	Band	TX (MHz)		RX (MHz)		
	Bluetooth	2400-2483.5				
	2.4G WLAN	2400-2483.5				
	5.2G WLAN	5150-5250				
	5.3G WLAN	5250-5350				
	5.6G WLAN	5470-5725				
	5.8G WLAN	5725-5850				
Test Channels (low-mid-high)	0-39-78 (BT)					
	0-19-39 (BLE)					
	1-6-11 (2.4G WIFI 802.11b/g/n HT20/ac VHT20)					
	3-6-9 (2.4G WIFI 802.11n HT40/ac VHT40)					
	5G WLAN	5.2G WLAN	5.3G WLAN	5.6G WLAN	5.8G WLAN	
	802.11a/n HT20/ ac VHT20	36-40-44-48	52-56-60-64	100-104-108- 112-116-132- 136-140-144	149-153-157- 161-165	
	802.11n HT40/ ac VHT40	38-46	54-62	102-110-118- 126-134-142	151-159	
	802.11ac VHT80	42	58	106-122-138	155	
Antenna Gain	Antenna	Antenna Type	P/N	Band	Ant Gain (dBi)	Manufacture
	Ant A (Main Ant)	PIFA	WA-F-LB-02-207	2400-2500MHz	1.78	INPAQ
				5150-5350MHz	2.66	
				5450-5650MHz	2.78	
				5750-5850MHz	2.88	
	Ant B (Aux Ant)	PIFA	WA-F-LB-01-081	2400-2500MHz	1.32	
				5150-5350MHz	2.82	
				5450-5650MHz	2.74	
				5750-5850MHz	2.81	
	Ant A (Main Ant)	PIFA	N12-6280-R0A	2400-2500MHz	1.75	South Star
				5150-5350MHz	2.24	
				5450-5650MHz	2.85	
				5750-5850MHz	2.93	
	Ant B (Aux Ant)	PIFA	N12-6281-R0A	2400-2500MHz	-0.31	
				5150-5350MHz	2.98	
				5450-5650MHz	2.01	
5750-5850MHz				1.93		
Other Information						
Battery1	Model	L19M3PF8				
	Power Rating	11.58Vdc 36.4Wh				
	Manufacturer	Simple				
Battery2	Model	L19C3PF8				
	Power Rating	11.58Vdc 36.4Wh				
	Manufacturer	Cexlpert				

Note:

1. Ant A is main antenna, and Ant B is aux antenna.
2. Implementation in the following platform
Model: IdeaPad Flex 3 11ADA05
Product name: Notebook Computer
Brand name: Lenovo

2.2 STATEMENT OF COMPLIANCE

Mode	Highest Reported Body SAR-1g (W/kg)
2.4G WLAN	1.07
5.2G WLAN	0.68
5.3G WLAN	0.87
5.6G WLAN	0.93
5.8G WLAN	0.80
Bluetooth	/
Note: The highest SAR for body and simultaneous transmission exposure conditions are 1.07W/kg and 1.46W/kg respectively.	

Note:

The device is in compliance with Specific Absorption Rate(SAR) for general population uncontrolled exposure limits according to the FCC rule §2.1093, the ANSI C95.1:1992/IEEE C95.1:1991, the NCRP Report Number 86 for uncontrolled environment, and had been tested in accordance with the measurement methods and procedures specified in IEEE Std 1528-2013.

2.3 LABORATORY ENVIRONMENT

Temperature	Min. = 18°C, Max. = 25°C
Relative humidity	Min. = 30%, Max. = 70%
Ground system resistance	< 0.5Ω
Ambient noise is checked and found very low and in compliance with requirement of standards. Reflection of surrounding objects is minimized and in compliance with requirement of standards.	

2.4 MAIN TEST INSTRUMENTS

Item	Equipment	Manufacturer	Model	Serial No.	Cal. Date	Cal. Interval
1	Data Acquisition Electronics	Speag	DAE4	1390	Oct. 29, 2019	1 Year
2	Data Acquisition Electronics	Speag	DAE3	420	Jun. 22, 2020	1 Year
3	E-field Probe	Speag	ES3DV3	3162	May 09, 2020	1 Year
4	E-field Probe	Speag	EX3DV4	7544	Sep. 09, 2019	1 Year
5	System Validation Dipole	Speag	D2450V2	919	Jun. 11, 2018	3 Years
6	System Validation Dipole	Speag	D5GHzV2	1160	Jun. 20, 2018	3 Years
7	ELI4 Phantom	Speag	ELI4 Phantom V5.0	1222	N/A	N/A
8	Power Amplifier	Mini-Circuits	ZHL-42W+	QA1333003	Mar. 10, 2020	1 Year
9	Power Amplifier	Mini-Circuits	ZVE-8G+	520701341	Mar. 10, 2020	1 Year
10	DC Source meter	Iteck	IT6154	006104126768201001	Aug. 03, 2019	1 Year
11	Signal Analyzer	R&S	FSV7	103120	Sep. 29, 2019	1 Year
12	Vector Network Analyzer	Anritsu	MS46522B	1538101	Sep. 29, 2019	1 Year
13	Signal Generator	R&S	SMF100A	101214	Feb. 29, 2020	1 Year
14	Smart Power Sensor	R&S	NRP-Z21	102209	Mar. 07, 2020	1 Year
15	Dielectric Assessment Kit	Speag	DAK-3.5	1226	N/A	N/A
16	Directional Coupler	Woken	TS-PCC0M-05	107090019	Mar. 01, 2020	1 Year
17	Coupler	Woken	0110A05601O-10	COM5BNW1A2	Mar. 01, 2020	1 Year

Note:

1. "N/A" denotes no model name, serial No. or calibration specified.

2.

1) Per KDB865664 D01 requirements for dipole calibration, the test laboratory has adopted three-year extended calibration interval. Each measured dipole is expected to evaluate with the following criteria at least on annual interval in Appendix C.

a) There is no physical damage on the dipole;

b) System check with specific dipole is within 10% of calibrated value;

c) The most recent return-loss result, measured at least annually, deviates by no more than 20% from the previous measurement;

d) The most recent measurement of the real or imaginary parts of the impedance, measured at least annually is within 5Ω from the previous measurement.

2) Network analyzer probe calibration against air, distilled water and a short block performed before measuring liquid parameters.

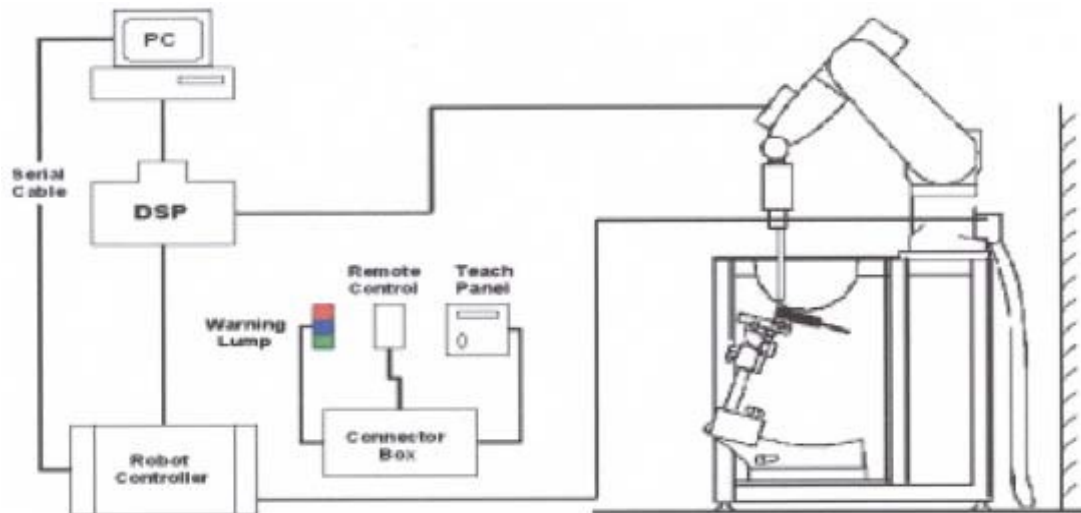
3. SAR MEASUREMENTS SYSTEM CONFIGURATION

3.1 SAR MEASUREMENT SET-UP

The DASY5 system for performing compliance tests consists of the following items:

1. A standard high precision 6-axis robot (Stäubli RX family) with controller and software. An arm extension for accommodating the data acquisition electronics (DAE).
2. A dosimetric probe, i.e. an isotropic E-field probe optimized and calibrated for usage in tissue simulating liquid. The probe is equipped with an optical surface detector system.
3. A data acquisition electronic (DAE) which performs the signal amplification, signal multiplexing, AD-conversion, offset measurements, mechanical surface detection, collision detection, etc. The unit is battery powered with standard or rechargeable batteries. The signal is optically transmitted to the EOC.
4. A unit to operate the optical surface detector which is connected to the EOC.
5. The Electro-Optical Coupler (EOC) performs the conversion from the optical into a digital electric signal of the DAE. The EOC is connected to the DASY5 measurement server.
6. The DASY5 measurement server, which performs all real-time data evaluation for field measurements and surface detection, controls robot movements and handles safety operation. A computer operating Windows.
7. DASY5 software and SEMCAD data evaluation software.
8. Remote control with teach panel and additional circuitry for robot safety such as warning lamps, etc.
9. The generic twin phantom enabling the testing of left-hand and right-hand usage.
10. The device holder for handheld mobile phones.
11. Tissue simulating liquid mixed according to the given recipes.
12. System validation dipoles allowing to validate the proper functioning of the system.

3.1.1 TEST SETUP LAYOUT



3.2 DASY5 E-FIELD PROBE SYSTEM

The SAR measurements were conducted with the dosimetric probe ES3DV3 and EX3DV4 (manufactured by SPEAG), designed in the classical triangular configuration and optimized for dosimetric evaluation.

3.2.1 PROBE SPECIFICATION

ES3DV3

Construction	Symmetrical design with triangular core Interleaved sensors Built-in shielding against static charges PEEK enclosure material (resistant to organic solvents, e.g., DGBE)
Calibration	ISO/IEC 17025 calibration service available
Frequency	10 MHz to 4 GHz Linearity: ± 0.2 dB (30 MHz to 4 GHz)
Directivity	± 0.3 dB in HSL (rotation around probe axis) ± 0.5 dB in tissue material (rotation normal to probe axis)
Dynamic Range	5 μ W/g to > 100 mW/g Linearity: ± 0.2 dB
Dimensions	Overall length: 330 mm (Tip: 20 mm) Tip diameter: 4 mm (Body: 12 mm) Distance from probe tip to dipole centers: 1.0 mm

EX3DV4

Construction	Symmetrical design with triangular core Interleaved sensors Built-in shielding against static charges PEEK enclosure material (resistant to organic solvents, e.g., DGBE)
Calibration	ISO/IEC 17025 calibration service available
Frequency	10 MHz to 6 GHz Linearity: ± 0.2 dB (30 MHz to 6 GHz)
Directivity	± 0.3 dB in HSL (rotation around probe axis) ± 0.5 dB in tissue material (rotation normal to probe axis)
Dynamic Range	10 μ W/g to > 100 mW/g Linearity: ± 0.2 dB
Dimensions	Overall length: 330 mm (Tip: 20 mm) Tip diameter: 2.5 mm (Body: 12 mm) Distance from probe tip to dipole centers: 1.0 mm



E-field Probe

3.2.2 E-FIELD PROBE CALIBRATION

Each probe is calibrated according to a dosimetric assessment procedure with accuracy better than $\pm 10\%$. The spherical isotropy was evaluated and found to be better than $\pm 0.25\text{dB}$. The sensitivity parameters (NormX, NormY, NormZ), the diode compression parameter (DCP) and the conversion factor (ConvF) of the probe are tested.

The free space E-field from amplified probe outputs is determined in a test chamber. This is performed in a TEM cell for frequencies below 1 GHz, and in a wave guide above 1 GHz for free space. For the free space calibration, the probe is placed in the volumetric center of the cavity and at the proper orientation with the field. The probe is then rotated 360 degrees.

E-field temperature correlation calibration is performed in a flat phantom filled with the appropriate simulated brain tissue. The measured free space E-field in the medium correlates to temperature rise in a dielectric medium. For temperature correlation calibration a RF transparent thermostat-based temperature probe is used in conjunction with the E-field probe.

$$\text{SAR} = C \frac{\Delta T}{\Delta t}$$

Where: Δt =Exposure time (30 seconds),

C =Heat capacity of tissue (brain or muscle),

ΔT =Temperature increase due to RF exposure.

Or
$$\text{SAR} = \frac{|E|^2 \sigma}{\rho}$$

Where: σ = Simulated Tissue Conductivity,

ρ =Tissue density (kg/m³).


3.2.3 OTHER TEST EQUIPMENT

3.2.3.1 Device Holder for Transmitters

Construction: Simple but effective and easy-to-use extension for Mounting Device that facilitates the testing of larger devices (e.g., laptops, cameras, etc.) It is light weight and fits easily on the upper part of the Mounting Device in place of the phone positioner. The extension is fully compatible with the Twin SAM, ELI4 and SAM v6.0 Phantoms.

Material: POM, Acrylic glass, Foam

3.2.3.2 Phantom

Model	ELI4 Phantom	
Construction	Phantom for compliance testing of handheld and body-mounted wireless devices in the frequency range of 30 MHz to 6 GHz. ELI is fully compatible with the IEC 62209-2 standard and all known tissue simulating liquids. ELI has been optimized regarding its performance and can be integrated into our standard phantom tables. A cover prevents evaporation of the liquid. Reference markings on the phantom allow installation of the complete setup, including all predefined phantom positions and measurement grids, by teaching three points. The phantom is compatible with all SPEAG dosimetric probes and dipoles.	
Shell Thickness	2±0.1 mm	
Filling Volume	Approx. 30 liters	
Dimensions	Length: 600 mm; Width: 190mm Height: adjustable feet	
Available	Special	

3.2.4 SCANNING PROCEDURE

The DASY5 installation includes predefined files with recommended procedures for measurements and validation. They are read-only document files and destined as fully defined but unmeasured masks. All test positions (head or body-worn) are tested with the same configuration of test steps differing only in the grid definition for the different test positions.

The “reference” and “drift” measurements are located at the beginning and end of the batch process. They measure the field drift at one single point in the liquid over the complete procedure. The indicated drift is mainly the variation of the DUT’s output power and should vary max. $\pm 5\%$.

The “surface check” measurement tests the optical surface detection system of the DASY5 system by repeatedly detecting the surface with the optical and mechanical surface detector and comparing the results. The output gives the detecting heights of both systems, the difference between the two systems and the standard deviation of the detection repeatability. Air bubbles or refraction in the liquid due to separation of the sugar-water mixture gives poor repeatability (above $\pm 0.1\text{mm}$). To prevent wrong results tests are only executed when the liquid is free of air bubbles. The difference between the optical surface detection and the actual surface depends on the probe and is specified with each probe. (It does not depend on the surface reflectivity or the probe angle to the surface within $\pm 30^\circ$.)

● Area Scan

The “area scan” measures the SAR above the DUT or verification dipole on a parallel plane to the surface. It is used to locate the approximate location of the peak SAR with 2D spline interpolation. The robot performs a stepped movement along one grid axis while the local electrical field strength is measured by the probe. The probe is touching the surface of the SAM during acquisition of measurement values. The standard scan uses large grid spacing for faster measurement. Standard grid spacing for head measurements is 15 mm in x- and y- dimension ($\leq 2\text{GHz}$), 12 mm in x- and y- dimension (2-4 GHz) and 10mm in x- and y- dimension (4-6GHz). If a finer resolution is needed, the grid spacing can be reduced. Grid spacing and orientation have no influence on the SAR result. For special applications where the standard scan method does not find the peak SAR within the grid, e.g. mobile phones with flip cover, the grid can be adapted in orientation.

● Zoom Scan

A “zoom scan” measures the field in a volume around the 2D peak SAR value acquired in the previous “coarse” scan. This is a fine grid with maximum scan spatial resolution: $\Delta x_{\text{zoom}}, \Delta y_{\text{zoom}} \leq 2\text{GHz} - \leq 8\text{mm}$, 2-4GHz - $\leq 5\text{mm}$ and 4-6 GHz - $\leq 4\text{mm}$; $\Delta z_{\text{zoom}} \leq 3\text{GHz} - \leq 5\text{mm}$, 3-4 GHz - $\leq 4\text{mm}$ and 4-6GHz - $\leq 2\text{mm}$ where the robot additionally moves the probe along the z-axis away from the bottom of the Phantom. DASY is also able to perform repeated zoom scans if more than 1 peak is found during area scan. In this document, the evaluated peak 1g and 10g averaged SAR values are shown in the 2D-graphics in Appendix B. Test results relevant for the specified standard (see chapter 1.4.) are shown in table form in chapter 7.2.

A Z-axis scan measures the total SAR value at the x-and y-position of the maximum SAR value found during the cube scan. The probe is moved away in z-direction from the bottom of the SAM phantom in 2 mm steps. This measurement shows the continuity of the liquid and can - depending in the field strength – also show the liquid depth.

The following table summarizes the area scan and zoom scan resolutions per FCC KDB 865664D01:

Frequency	Maximun Area Scan resolution ($\Delta x_{\text{area}}, \Delta y_{\text{area}}$)	Maximun Zoom Scan spatial resolution ($\Delta x_{\text{Zoom}}, \Delta y_{\text{Zoom}}$)	Maximun Zoom Scan spatial resolution			Minimum zoom scan volume (x,y,z)
			Uniform Grid	Graded Grad		
			$\Delta z_{\text{Zoom}}(n)$	$\Delta z_{\text{Zoom}}(1)^*$	$\Delta z_{\text{Zoom}}(n>1)^*$	
$\leq 2\text{GHz}$	$\leq 15\text{mm}$	$\leq 8\text{mm}$	$\leq 5\text{mm}$	$\leq 4\text{mm}$	$\leq 1.5^* \Delta z_{\text{Zoom}}(n-1)$	$\geq 30\text{mm}$
2-3GHz	$\leq 12\text{mm}$	$\leq 5\text{mm}$	$\leq 5\text{mm}$	$\leq 4\text{mm}$	$\leq 1.5^* \Delta z_{\text{Zoom}}(n-1)$	$\geq 30\text{mm}$
3-4GHz	$\leq 12\text{mm}$	$\leq 5\text{mm}$	$\leq 4\text{mm}$	$\leq 3\text{mm}$	$\leq 1.5^* \Delta z_{\text{Zoom}}(n-1)$	$\geq 28\text{mm}$
4-5GHz	$\leq 10\text{mm}$	$\leq 4\text{mm}$	$\leq 3\text{mm}$	$\leq 2.5\text{mm}$	$\leq 1.5^* \Delta z_{\text{Zoom}}(n-1)$	$\geq 25\text{mm}$
5-6GHz	$\leq 10\text{mm}$	$\leq 4\text{mm}$	$\leq 2\text{mm}$	$\leq 2\text{mm}$	$\leq 1.5^* \Delta z_{\text{Zoom}}(n-1)$	$\geq 22\text{mm}$

3.2.5 SPATIAL PEAK SAR EVALUATION

The spatial peak SAR - value for 1 and 10 g is evaluated after the Cube measurements have been done. The basis of the evaluation are the SAR values measured at the points of the fine cube grid consisting of 5 x 5 x 7 points (with 8mm horizontal resolution) or 7 x 7 x 7 points (with 5mm horizontal resolution) or 8 x 8 x 7 points (with 4mm horizontal resolution). The algorithm that finds the maximal averaged volume is separated into three different stages.

- The data between the dipole center of the probe and the surface of the phantom are extrapolated. This data cannot be measured since the center of the dipole is 2.7 mm away from the tip of the probe and the distance between the surface and the lowest measuring point is about 1 mm (see probe calibration sheet). The extrapolated data from a cube measurement can be visualized by selecting "Graph Evaluated".
- The maximum interpolated value is searched with a straight-forward algorithm. Around this maximum the SAR - values averaged over the spatial volumes (1g or 10 g) are computed using the 3d-spline interpolation algorithm. If the volume cannot be evaluated (i.e., if a part of the grid was cut off by the boundary of the measurement area) the evaluation will be started on the corners of the bottom plane of the cube.
- All neighboring volumes are evaluated until no neighboring volume with a higher average value is found.

Extrapolation

The extrapolation is based on a least square algorithm [W. Gander, Computer mathematic, p.168-180]. Through the points in the first 3 cm along the z-axis, polynomials of order four are calculated. These polynomials are then used to evaluate the points between the surface and the probe tip. The points, calculated from the surface, have a distance of 1 mm from each other.

Interpolation

The interpolation of the points is done with a 3d-Spline. The 3d-Spline is composed of three one-dimensional splines with the "Not a knot"-condition [W. Gander, Computer mathematic, p.141-150] (x, y and z -direction) [Numerical Recipes in C, Second Edition, p.123ff].

Volume Averaging

At First the size of the cube is calculated. Then the volume is integrated with the trapezoidal algorithm. 8000 points (20x20x20) are interpolated to calculate the average.

Advanced Extrapolation

DASY5 uses the advanced extrapolation option which is able to compensate boundary effects on E-field probes.

3.2.6 DATA STORAGE AND EVALUATION

3.2.6.1 Data Storage

The DASY5 software stores the acquired data from the data acquisition electronics as raw data (in microvolt readings from the probe sensors), together with all necessary software parameters for the data evaluation (probe calibration data, liquid parameters and device frequency and modulation data) in measurement files with the extension "DAE". The software evaluates the desired unit and format for output each time the data is visualized or exported. This allows verification of the complete software setup even after the measurement and allows correction of incorrect parameter settings. For example, if a measurement has been performed with a wrong crest factor parameter in the device setup, the parameter can be corrected afterwards and the data can be re-evaluated.

The measured data can be visualized or exported in different units or formats, depending on the selected probe type ([V/m], [A/m], [°C], [mW/g], [mW/cm²], [dBrel], etc.). Some of these units are not available in certain situations or show meaningless results, e.g., a SAR output in a lossless media will always be zero. Raw data can also be exported to perform the evaluation with other software packages.

3.2.7 DATA EVALUATION BY SEMCAD

The SEMCAD software automatically executes the following procedures to calculate the field units from the microvolt readings at the probe connector. The parameters used in the evaluation are stored in the configuration modules of the software:

Probe parameters:	Sensitivity	Normi, ai0, ai1, ai2
	Conversion factor	ConvFi
	Diode compression point	Dcpj
Device parameters:	Frequency	f
	Crest factor	cf
Media parameters:	Conductivity	
	Density	

These parameters must be set correctly in the software. They can be found in the component documents or they can be imported into the software from the configuration files issued for the DASY5 components. In the direct measuring mode of the multi meter option, the parameters of the actual system setup are used. In the scan visualization and export modes, the parameters stored in the corresponding document files are used.

The first step of the evaluation is a linearization of the filtered input signal to account for the compression characteristics of the detector diode. The compensation depends on the input signal, the diode type and the DC-transmission factor from the diode to the evaluation electronics.

If the exciting field is pulsed, the crest factor of the signal must be known to correctly compensate for peak power. The formula for each channel can be given as:

$$V_i = U_i + U_i^2 \cdot cf / dcp_i$$

With	V_i = compensated signal of channel i	(i = x, y, z)
	U_i = input signal of channel i	(i = x, y, z)
	cf = crest factor of exciting field	(DASY parameter)
	dcp _i = diode compression point	(DASY parameter)

From the compensated input signals the primary field data for each channel can be evaluated:

$$\text{E-field probes: } E_i = (V_i / \text{Norm}_i \cdot \text{ConvF})^{1/2}$$

$$\text{H-field probes: } H_i = (V_i)^{1/2} \cdot (a_{i0} + a_{i1} f + a_{i2} f^2) / f$$

With V_i = compensated signal of channel i ($i = x, y, z$)

Norm_i = sensor sensitivity of channel i ($i = x, y, z$)
[mV/(V/m)²] for E-field Probes

ConvF = sensitivity enhancement in solution

a_{ij} = sensor sensitivity factors for H-field probes

f = carrier frequency [GHz]

E_i = electric field strength of channel i in V/m

H_i = magnetic field strength of channel i in A/m

The RSS value of the field components gives the total field strength (Hermitian magnitude):

$$E_{\text{tot}} = (E_x^2 + E_y^2 + E_z^2)^{1/2}$$

The primary field data are used to calculate the derived field units.

$$\text{SAR} = (E_{\text{tot}})^2 \cdot \sigma / (\rho \cdot 1000)$$

With SAR = local specific absorption rate in mW/g

E_{tot} = total field strength in V/m
= conductivity in [mho/m] or [Siemens/m]
= equivalent tissue density in g/cm³

Note that the density is normally set to 1 (or 1.06), to account for actual brain density rather than the density of the simulation liquid. The power flow density is calculated assuming the excitation field to be a free space field.

$$P_{\text{pwe}} = E_{\text{tot}}^2 / 3770 \text{ or } P_{\text{pwe}} = H_{\text{tot}}^2 \cdot 37.7$$

With P_{pwe} = equivalent power density of a plane wave in mW/cm²

E_{tot} = total field strength in V/m

H_{tot} = total magnetic field strength in A/m

4. SYSTEM VERIFICATION PROCEDURE

4.1 TISSUE VERIFICATION

The simulating liquids should be checked at the beginning of a series of SAR measurements to determine if the dielectric parameters are within the tolerances of the specified target values. The measured conductivity and relative permittivity should be within $\pm 5\%$ of the target values.

The following materials are used for producing the tissue-equivalent materials.

Tissue Type	Bactericide	DGBE	HEC	NaCl	Sucrose	Triton X-100	Water	Diethylene Glycol Mono-hexylether
Body 2450	-	31.4	-	0.1	-	-	68.5	-
Body 5G	-	-	-	-	-	10.7	78.6	10.7

Salt: 99+% Pure Sodium Chloride; Sugar: 98+% Pure Sucrose; Water: De-ionized, 16M + resistivity
 HEC: Hydroxyethyl Cellulose; DGBE: 99+% Di(ethylene glycol) butyl ether, [2-(2-butoxyethoxy)ethanol]
 Triton X-100(ultra pure): Polyethylene glycol mono [4-(1,1,3,3-tetramethylbutyl)phenyl]ether

Tissue Verification									
Tissue Type	Frequency (MHz)	Liquid Temp. (°C)	Conductivity (σ)	Permittivity (ϵ_r)	Targeted Conductivity (σ)	Targeted Permittivity (ϵ_r)	Deviation Conductivity (σ) (%)	Deviation Permittivity (ϵ_r) (%)	Date
Head	2450	22.3	1.874	38.309	1.80	39.2	4.11	-2.27	Jul. 07, 2020
Head	5200	22.4	4.704	36.183	4.66	36.0	0.94	0.51	Jul. 08, 2020
Head	5300	22.4	4.815	35.937	4.76	35.9	1.16	0.10	Jul. 08, 2020
Head	5500	22.4	5.039	35.480	4.96	35.6	1.59	-0.34	Jul. 08, 2020
Head	5600	22.4	5.161	35.262	5.07	35.5	1.79	-0.67	Jul. 08, 2020
Head	5800	22.4	5.410	34.822	5.27	35.3	2.66	-1.35	Jul. 08, 2020

Note:

- 1)The dielectric parameters of the tissue-equivalent liquid should be measured under similar ambient conditions and within 2 °C of the conditions expected during the SAR evaluation to satisfy protocol requirements.
- 2)KDB 865664 was ensured to be applied for probe calibration frequencies greater than or equal to 50MHz of the EUT frequencies.
- 3)The above measured tissue parameters were used in the DASY software to perform interpolation via the DASY software to determine actual dielectric parameters at the test frequencies. The SAR test plots may slightly differ from the table above since the DASY rounds to three significant digits.

4.2 SYSTEM CHECK

The system check is performed for verifying the accuracy of the complete measurement system and performance of the software. The system check is performed with tissue equivalent material according to IEEE P1528 (described above). The following table shows system check results for all frequency bands and tissue liquids used during the tests.

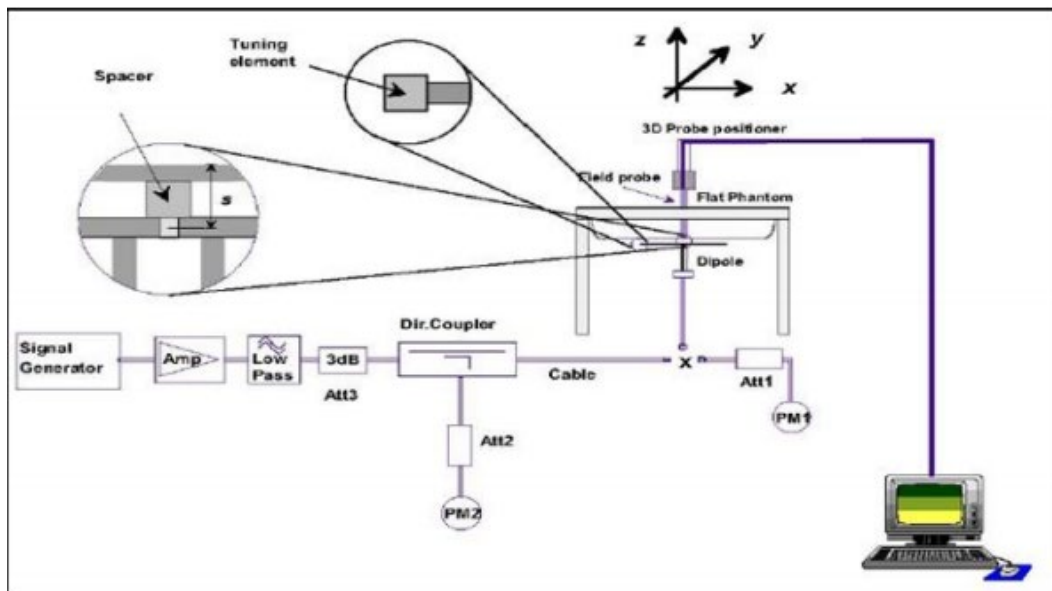
System Check	Date	Frequency (MHz)	Targeted SAR-1g (W/kg)	Measured SAR-1g (W/kg)	normalized SAR-1g (W/kg)	Deviation (%)	Dipole S/N
Head	Jul. 07, 2020	2450	52.10	13.40	53.60	2.88	919
Head	Jul. 08, 2020	5200	75.30	7.29	72.90	-3.19	1160
Head	Jul. 08, 2020	5300	76.80	7.85	78.50	2.21	1160
Head	Jul. 08, 2020	5500	80.80	7.72	77.20	-4.46	1160
Head	Jul. 08, 2020	5600	78.60	7.91	79.10	0.64	1160
Head	Jul. 08, 2020	5800	77.90	7.62	76.20	-2.18	1160

4.3 SYSTEM CHECK PROCEDURE

The system check is performed by using a system check dipole which is positioned parallel to the planar part of the SAM phantom at the reference point. The distance of the dipole to the SAM phantom is determined by a plexiglass spacer. The dipole is connected to the signal source consisting of signal generator and amplifier via a directional coupler, N-connector cable and adaption to SMA. It is fed with a power of 250 mW (below 3GHz) or 100mW (3-6GHz). To adjust this power a power meter is used.

The power sensor is connected to the cable before the system check to measure the power at this point and do adjustments at the signal generator. At the outputs of the directional coupler both return loss as well as forward power are controlled during the system check to make sure that emitted power at the dipole is kept constant. This can also be checked by the power drift measurement after the test.

System check results have to be equal or near the values determined during dipole calibration (target SAR in table above) with the relevant liquids and test system ($\pm 10\%$).



5. SAR MEASUREMENT VARIABILITY AND UNCERTAINTY

5.1 SAR MEASUREMENT VARIABILITY

Per KDB865664 D01 SAR measurement 100 MHz to 6 GHz, SAR measurement variability must be assessed for each frequency band, which is determined by the SAR probe calibration point and tissue-equivalent medium used for the device measurements. The additional measurements are repeated after the completion of all measurements requiring the same head or body tissue-equivalent medium in a frequency band. The test device should be returned to ambient conditions (normal room temperature) with the battery fully charged before it is re-mounted on the device holder for the repeated measurement(s) to minimize any unexpected variations in the repeated results.

- 1) Repeated measurement is not required when the original highest measured SAR is < 0.80 W/kg; steps 2) through 4) do not apply.
- 2) When the original highest measured SAR is ≥ 0.80 W/kg, repeat that measurement once.
- 3) Perform a second repeated measurement only if the ratio of largest to smallest SAR for the original and first repeated measurements is > 1.20 or when the original or repeated measurement is ≥ 1.45 W/kg ($\sim 10\%$ from the 1-g SAR limit).
- 4) Perform a third repeated measurement only if the original, first or second repeated measurement is ≥ 1.5 W/kg and the ratio of largest to smallest SAR for the original, first and second repeated measurements is > 1.20 .

The same procedures should be adapted for measurements according to extremity and occupational exposure limits by applying a factor of 2.5 for extremity exposure and a factor of 5 for occupational exposure to the corresponding SAR thresholds.

The detailed repeated measurement results are shown in section 7.2.

6. OPERATIONAL CONDITIONS DURING TEST

6.1 SAR TEST CONFIGURATION

6.1.1 WIFI TEST CONFIGURATION

For WLAN SAR testing, WLAN engineering testing software installed on the DUT can provide continuous transmitting RF signal.

2.4G

Mode	802.11b	802.11g	802.11n HT20	802.11n HT40	802.11ac VHT20	802.11ac VHT40
Duty cycle	100%					
Crest factor	1					

5G

Mode	802.11a	802.11n HT20	802.11n HT40	802.11ac VHT20	802.11ac VHT40	802.11ac VHT80
Duty cycle	100%					
Crest factor	1					

For WiFi SAR testing, a communication link is set up with the test mode software for WiFi mode test. During the test, at the each test frequency channel, the EUT is operated at the RF continuous emission mode. The test procedures in KDB 248227 D01 are applied.

6.1.1.1 2.4G SAR Test Requirements

802.11b DSSS SAR Test Requirements

SAR is measured for 2.4 GHz 802.11b DSSS using either a fixed test position or, when applicable, the initial test position procedure. SAR test reduction is determined according to the following:

- 1) When the reported SAR of the highest measured maximum output power channel for the exposure configuration is ≤ 0.8 W/kg, no further SAR testing is required for 802.11b DSSS in that exposure configuration.
- 2) When the reported SAR is > 0.8 W/kg, SAR is required for that exposure configuration using the next highest measured output power channel. When any reported SAR is > 1.2 W/kg, SAR is required for the third channel; i.e., all channels require testing.

2.4 GHz 802.11g/n OFDM SAR Test Exclusion Requirements

When SAR measurement is required for 2.4 GHz 802.11g/n OFDM configurations, the measurement and test reduction procedures for OFDM are applied. SAR is not required for the following 2.4 GHz OFDM conditions.

- 1) When KDB Publication 447498 SAR test exclusion applies to the OFDM configuration.
- 2) When the highest reported SAR for DSSS is adjusted by the ratio of OFDM to DSSS specified maximum output power and the adjusted SAR is ≤ 1.2 W/kg.

SAR Test Requirements for OFDM configurations

When SAR measurement is required for 2.4 GHz 802.11g/n OFDM configurations, each stand alone. And frequency aggregated band is considered separately for SAR test reduction. In applying the initial test configuration and subsequent test configuration procedures, the 802.11 transmission configuration with the highest specified maximum output power and the channel within a test configuration with the highest measured maximum output power should be clearly distinguished to apply the procedures.

6.1.1.2 5G SAR Test Requirements

✧ U-NII-1 and U-NII-2A Band

For devices that operate in both U-NII-1 and U-NII-2A bands, when the same maximum output power is specified for both bands, begin SAR measurement in U-NII-2A band by applying the OFDM SAR requirements. If the highest reported SAR for a test configuration is ≤ 1.2 W/kg, SAR is not required for U-NII-1 band for that configuration (802.11 mode and exposure condition); otherwise, both bands are tested independently for SAR. When different maximum output power is specified for the bands, begin SAR measurement in the band with higher specified maximum output power. The highest reported SAR for the tested configuration is adjusted by the ratio of lower to higher specified maximum output power for the two bands. When the adjusted SAR is ≤ 1.2 W/kg, SAR is not required for the band with lower maximum output power in that test configuration; otherwise, both bands are tested independently for SAR.

✧ U-NII-2C, U-NII-3 Bands

The frequency range covered by these bands is 380 MHz (5.47 – 5.85 GHz), which requires a minimum of at least two SAR probe calibration frequency points to support SAR measurements. When Terminal Doppler Weather Radar (TDWR) restriction applies, the channels at 5.60 – 5.65 GHz in U-NII-2C band must be disabled with acceptable mechanisms and documented in the equipment certification.

Unless band gap channels are permanently disabled, they must be considered for SAR testing.

To maintain SAR measurement accuracy and to facilitate test reduction, the channels in U-NII-2C band above 5.65 GHz may be grouped with the 5.8 GHz channels in U-NII-3 or §15.247 band to enable two SAR probe calibration frequency points to cover the bands, including the band gap channels.¹¹ When band gap channels are supported and the bands are not aggregated for SAR testing, band gap channels must be considered independently in each band according to the normally required OFDM SAR measurement and probe calibration frequency points requirements.

6.1.1.3 OFDM transmission mode and SAR test channel selection

For the 2.4GHz and 5GHz bands, when the same maximum output power was specified for multiple OFDM transmission mode configurations in a frequency band or aggregated band, SAR is measured using the configuration with the largest channel bandwidth, lowest order modulation and lowest data rate. When the maximum output power of a channel is the same for equivalent OFDM configurations (for example 802.11a, 802.11n and 802.11ac, or 802.11g and 802.11n, with the same channel bandwidth, modulation, and data rate, etc.), the lower order 802.11 mode (i.e. 802.11a then 802.11n and 802.11ac, or 802.11g then 802.11n) is used for SAR measurement. When the maximum output power is the same for multiple test channels, either according to the default or additional power measurement requirements, SAR is measured using the channel closest to the middle of the frequency band or aggregated band. When there are multiple channels with the same maximum output power, SAR is measured using the higher number channel.

6.1.1.4 Initial test configuration procedure

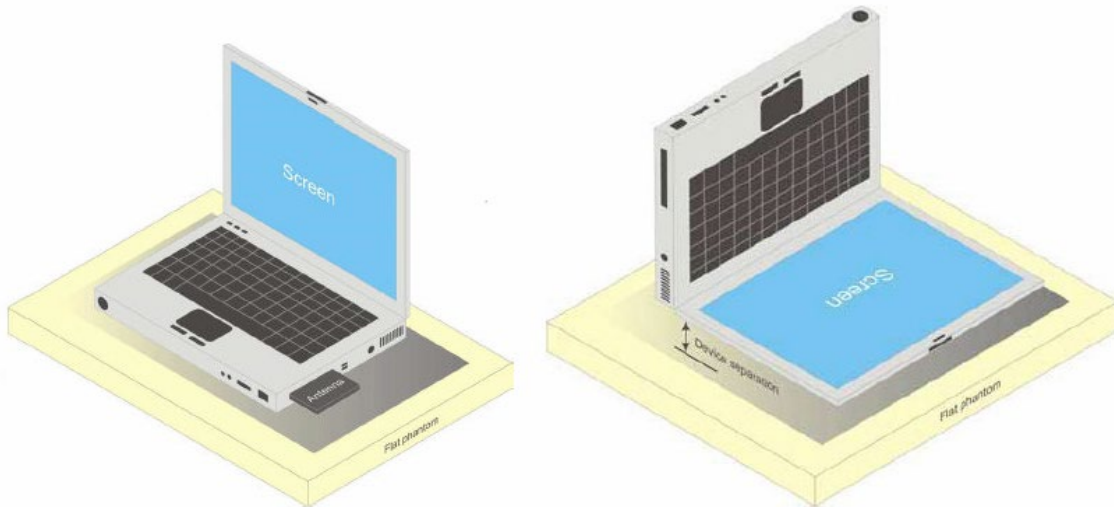
For OFDM, in both 2.4GHz and 5GHz bands, an initial test configuration is determined for each frequency band and aggregated band, according to the transmission mode with the highest maximum output power specified for SAR measurements. When the same maximum output power is specified for multiple OFDM transmission mode configurations in a frequency band or aggregated band, SAR is measured using the configuration(s) with the largest channel bandwidth, lowest order modulation, and lowest data rate. If the average RF output powers of the highest identical transmission modes are within 0.25 dB of each other, mid channel of the transmission mode with highest average RF output powers is the initial test channel. Otherwise, the channel of the transmission mode with the highest average RF output power will be the initial test configuration.

When the reported SAR is ≤ 0.8 W/kg, no additional measurements on other test channels are required. Otherwise, SAR is evaluated using the subsequent highest average RF output channel until the reported SAR result is ≤ 1.2 W/kg or all channels are measured. When there are multiple untested channels having the same subsequent highest average RF output power, the channel with higher frequency from the lowest 802.11 mode is considered for SAR measurement.

6.2 TEST POSITION

6.2.1 NOTEBOOK MODE

This DUT was tested in 2 different positions. They are back of keyboard and back of screen as illustrated below:

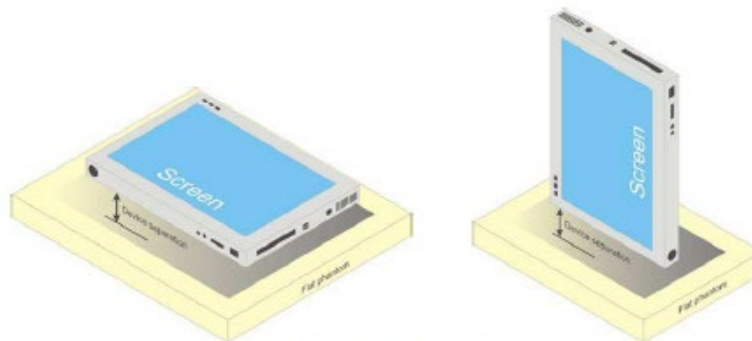


a) Portable computer with back of keyboard and back of screen.

6.2.2 TABLET MODE

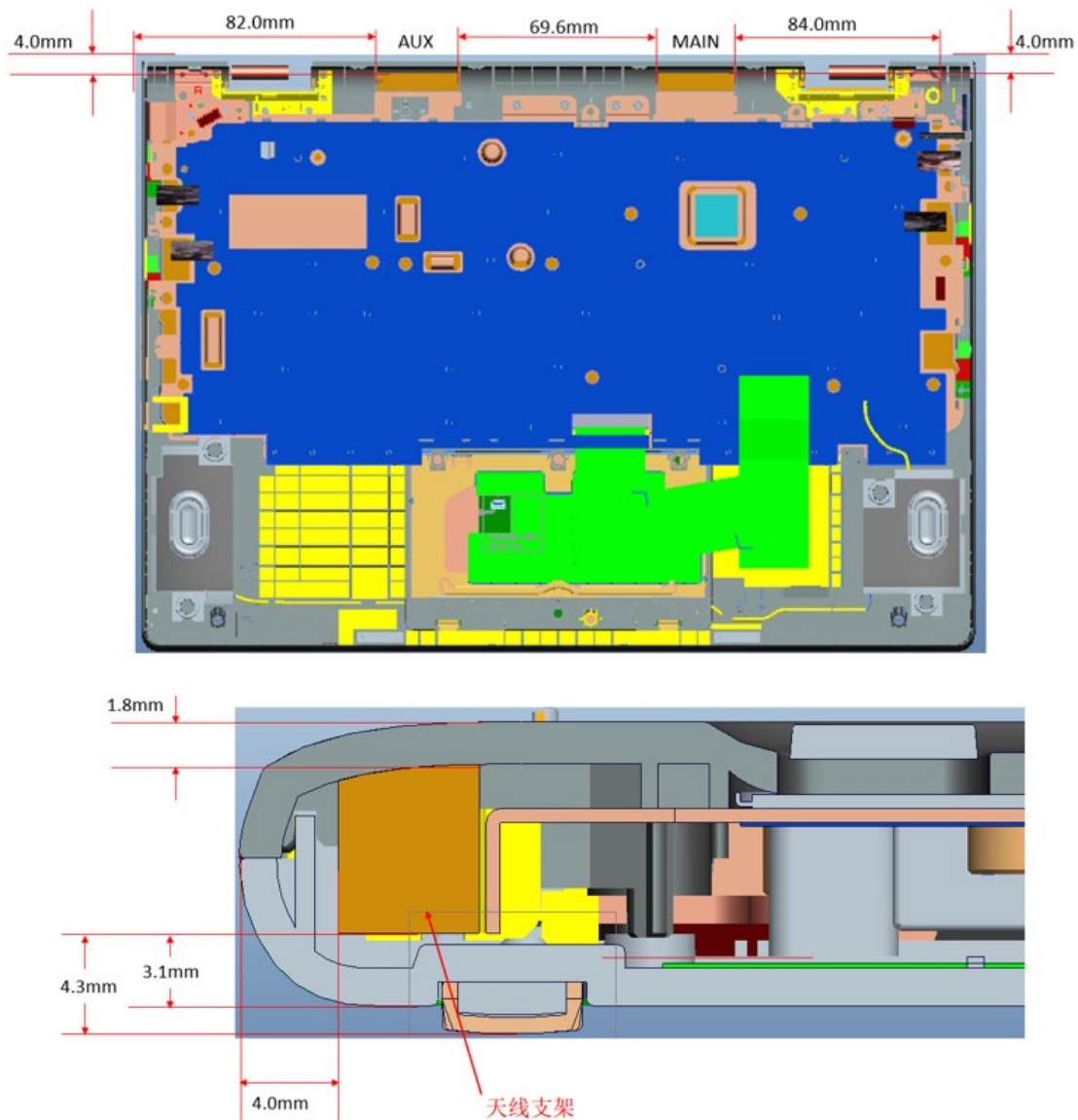
The device does not have telephone receiver. Next to the ear operation is not supported. So the additional Head SAR testing for this device is not required.

Body-worn operating configurations should be tested with positioned against a flat phantom in normal use configurations. The distance between the device and the phantom was kept 5mm.



b) Tablet form factor portable computer

The location of the antennas inside EUT is shown as below picture:



The SAR measurement positions of each antenna are as below:

For tablet mode

Antenna	Front Face	Rear Face	Left Side	Right Side	Top Side	Bottom Side
Main antenna	No	Yes	No	No	No	Yes
Aux antenna	No	Yes	No	No	No	Yes

For notebook mode

Antenna	Back of Keyboard	Back of Screen
Main antenna	Yes	Yes
Aux antenna	Yes	Yes

Note: According to the antenna location shown as above, particular DUT edges were not required to be evaluated for SAR if the antenna-to-edge distance is greater than 50mm.

7. TEST RESULT

7.1 CONDUCTED POWER RESULTS

7.1.1 CONDUCTED POWER MEASUREMENTS OF WIFI 2.4G

Band	Mode	Channel	Frequency (MHz)	Data Rate (Mbps)	Max. Tune up	Average Power(dBm)
2.4G WIFI _1TX _ANT A	802.11b	1	2412	1	17.00	16.70
		6	2437		17.00	16.78
		11	2462		17.00	16.62
	802.11g	1	2412	6	16.00	15.55
		6	2437		18.00	17.67
		11	2462		18.00	17.38
	802.11n HT20	1	2412	MCS0	15.00	Not Required
		6	2437		18.00	
		11	2462		14.50	
	802.11n HT40	3	2422	MCS0	11.00	
		6	2437		16.50	
		9	2452		9.50	
	802.11ac VHT20	1	2412	MCS0	15.00	
		6	2437		18.00	
		11	2462		14.50	
	802.11ac VHT40	3	2422	MCS0	11.00	
		6	2437		16.50	
		9	2452		9.50	

Band	Mode	Channel	Frequency (MHz)	Data Rate (Mbps)	Max. Tune up	Average Power(dBm)
2.4G WIFI _1TX _ANT B	802.11b	1	2412	1	17.00	16.89
		6	2437		17.00	16.91
		11	2462		17.00	16.76
	802.11g	1	2412	6	16.00	15.44
		6	2437		18.00	17.76
		11	2462		18.00	17.41
	802.11n HT20	1	2412	6.5	18.00	Not Required
		6	2437		18.00	
		11	2462		14.50	
	802.11n HT40	3	2422	13.5	11.00	
		6	2437		16.50	
		9	2452		9.50	
	802.11ac VHT20	1	2412	6.5	15.00	
		6	2437		18.00	
		11	2462		14.50	
	802.11ac VHT40	3	2422	13.5	11.00	
		6	2437		16.50	
		9	2452		9.50	

Band	Mode	Channel	Frequency (MHz)	Data Rate (Mbps)	ANT 1 Average Power(dBm)	ANT 2 Average Power(dBm)	Max. Tune up	Total Average Power(dBm)
2.4G WIFI _2TX _ANT _A+B	802.11b	1	2412	1	16.70	16.89	20.00	19.81
		6	2437		16.78	16.91	20.00	19.86
		11	2462		16.62	16.76	20.00	19.70
	802.11g	1	2412	6	15.55	15.44	19.00	18.51
		6	2437		17.67	17.76	21.00	20.73
		11	2462		17.38	17.41	21.00	20.41
	802.11n HT20	1	2412	MCS8	Not Required	Not Required	18.00	Not Required
		6	2437				21.00	
		11	2462				17.50	
	802.11n HT40	3	2422	MCS8			14.00	
		6	2437				19.50	
		9	2452				12.50	
	802.11ac VHT20	1	2412	MCS8			18.00	
		6	2437				21.00	
		11	2462				17.50	
	802.11ac VHT40	3	2422	MCS8			14.00	
		6	2437				19.50	
		9	2452				12.50	

Note:

- 1) The Average conducted power of 2.4G WiFi is measured with RMS detector.
- 2) Per KDB248227 D01, for 2.4G WiFi, the highest measured maximum output power Channel for DSSS modes (802.11b) was selected for SAR measurement. SAR for OFDM modes (2.4GHz 802.11g) was required when the highest reported SAR for DSSS is adjusted by the ratio of OFDM modes (802.11g) to DSSS modes (802.11b) specified maximum output power and the adjusted SAR is > 1.2 W/kg.
- 3) The tested channel results are marks in bold.

7.1.2 CONDUCTED POWER MEASUREMENTS OF WIFI 5.2G

Band	Mode	Channel	Frequency (MHz)	Data Rate (Mbps)	Max. Tune up	Average Power(dBm)
5.2G WIFI _1TX _ANT A	802.11a	36	5180	6	13.00	12.97
		40	5200		13.00	12.62
		44	5220		13.00	12.92
		48	5240		13.00	12.85
	802.11n HT20	36	5180	MCS0	13.00	Not Required
		40	5200		13.00	
		44	5220		13.00	
		48	5240		13.00	
	802.11n HT40	38	5190	MCS0	9.00	
		46	5230		12.50	
	802.11ac VHT20	36	5180	MCS0	13.00	
		40	5200		13.00	
		44	5220		13.00	
		48	5240		13.00	
	802.11ac VHT40	38	5190	MCS0	9.00	
		46	5230		12.50	
	802.11ac VHT80	42	5210	MCS0	8.00	

Band	Mode	Channel	Frequency (MHz)	Data Rate (Mbps)	Max. Tune up	Average Power(dBm)
5.2G WIFI _1TX _ANT B	802.11a	36	5180	6	13.00	12.89
		40	5200		13.00	12.70
		44	5220		13.00	12.80
		48	5240		13.00	12.81
	802.11n HT20	36	5180	MCS0	13.00	Not Required
		40	5200		13.00	
		44	5220		13.00	
		48	5240		13.00	
	802.11n HT40	38	5190	MCS0	9.00	
		46	5230		12.50	
	802.11ac VHT20	36	5180	MCS0	13.00	
		40	5200		13.00	
		44	5220		13.00	
		48	5240		13.00	
	802.11ac VHT40	38	5190	MCS0	9.00	
		46	5230		12.50	
	802.11ac VHT80	42	5210	MCS0	8.00	

Band	Mode	Channel	Frequency (MHz)	Data Rate (Mbps)	ANT 1 Average Power(dBm)	ANT 2 Average Power(dBm)	Max. Tune up	Total Average Power(dBm)
5.2G WIFI _2TX _ANT A+B	802.11a	36	5180	6	12.97	12.89	16.00	15.94
		40	5200		12.62	12.70	16.00	15.67
		44	5220		12.92	12.80	16.00	15.87
		48	5240		12.85	12.81	16.00	15.84
	802.11n HT20	36	5180	MCS8	Not Required	Not Required	16.00	Not Required
		40	5200				16.00	
		44	5220				16.00	
		48	5240				16.00	
	802.11n HT40	38	5190	MCS8			12.00	
		46	5230				15.50	
	802.11ac VHT20	36	5180	MCS8			16.00	
		40	5200				16.00	
		44	5220				16.00	
		48	5240				16.00	
	802.11ac VHT40	38	5190	MCS8			12.00	
		46	5230				15.50	
	802.11ac VHT80	42	5210	MCS8			11.00	

Note: 1) The Average conducted power of 5.2G WiFi is measured with RMS detector.

2) The tested channel results are marks in bold.

7.1.3 CONDUCTED POWER MEASUREMENTS OF WIFI 5.3G

Band	Mode	Channel	Frequency (MHz)	Data Rate (Mbps)	Max. Tune up	Average Power(dBm)
5.3G WIFI _1TX _ANT A	802.11a	52	5260	6	13.00	12.93
		56	5280		13.00	12.92
		60	5300		13.00	12.98
		64	5320		13.00	12.94
	802.11n HT20	52	5260	MCS0	13.00	Not Required
		56	5280		13.00	
		60	5300		13.00	
		64	5320		13.00	
	802.11n HT40	54	5270	MCS0	12.50	
		62	5310		11.50	
	802.11ac VHT20	52	5260	MCS0	13.00	
		56	5280		13.00	
		60	5300		13.00	
		64	5320		13.00	
	802.11ac VHT40	54	5270	MCS0	12.50	
		62	5310		11.50	
	802.11ac VHT80	58	5290	MCS0	9.50	

Band	Mode	Channel	Frequency (MHz)	Data Rate (Mbps)	Max. Tune up	Average Power(dBm)
5.3G WIFI _1TX _ANT B	802.11a	52	5260	6	13.00	12.95
		56	5280		13.00	12.89
		60	5300		13.00	12.70
		64	5320		13.00	12.75
	802.11n HT20	52	5260	MCS0	13.00	Not Required
		56	5280		13.00	
		60	5300		13.00	
		64	5320		13.00	
	802.11n HT40	54	5270	MCS0	12.50	
		62	5310		11.50	
	802.11ac VHT20	52	5260	MCS0	13.00	
		56	5280		13.00	
		60	5300		13.00	
		64	5320		13.00	
	802.11ac VHT40	54	5270	MCS0	12.50	
		62	5310		11.50	
	802.11ac VHT80	58	5290	MCS0	9.50	

Band	Mode	Channel	Frequency (MHz)	Data Rate (Mbps)	ANT 1 Average Power(dBm)	ANT 2 Average Power(dBm)	Max. Tune up	Total Average Power(dBm)
5.3G WIFI _2TX _ANT A+B	802.11a	52	5260	6	12.93	12.95	16.00	15.95
		56	5280		12.92	12.89	16.00	15.92
		60	5300		12.98	12.70	16.00	15.85
		64	5320		12.94	12.75	16.00	15.86
	802.11n HT20	52	5260	MCS8	Not Required	Not Required	16.00	Not Required
		56	5280				16.00	
		60	5300				16.00	
		64	5320				16.00	
	802.11n HT40	54	5270	MCS8			15.50	
		62	5310				14.50	
	802.11ac VHT20	52	5260	MCS8			16.00	
		56	5280				16.00	
		60	5300				16.00	
		64	5320				16.00	
	802.11ac VHT40	54	5270	MCS8			15.50	
		62	5310				14.50	
	802.11ac VHT80	58	5290	MCS8			12.50	

Note: 1) The Average conducted power of 5.3G WiFi is measured with RMS detector.

2) The tested channel results are marks in bold.

7.1.4 CONDUCTED POWER MEASUREMENTS OF WIFI 5.6G

Band	Mode	Channel	Frequency (MHz)	Data Rate (Mbps)	Max. Tune up	Average Power(dBm)
5.6G WIFI _1TX _ANT A	802.11a	100	5500	6	13.00	12.75
		104	5520		13.00	12.85
		108	5540		13.00	12.68
		112	5560		13.00	12.65
		116	5580		13.00	12.84
		132	5660		13.00	12.98
		136	5680		13.00	12.96
		140	5700		13.00	12.57
		144	5720		12.50	12.38
	802.11n HT20	100	5500	MCS0	13.00	Not Required
		104	5520		13.00	
		108	5540		13.00	
		112	5560		13.00	
		116	5580		13.00	
		132	5660		13.00	
		136	5680		13.00	
		140	5700		13.00	
		144	5720		13.00	
	802.11n HT40	102	5510	MCS0	9.00	
		110	5550		12.50	
		118	5590		12.50	
		126	5630		12.50	
		134	5670		12.50	
		142	5710		12.50	

Band	Mode	Channel	Frequency (MHz)	Data Rate (Mbps)	Max. Tune up	Average Power(dBm)
5.6G WIFI _1TX _ANT A	802.11ac VHT20	100	5500	MCS0	13.00	Not Required
		104	5520		13.00	
		108	5540		13.00	
		112	5560		13.00	
		116	5580		13.00	
		132	5660		13.00	
		136	5680		13.00	
		140	5700		13.00	
		144	5720		13.00	
	802.11ac VHT40	102	5510	MCS0	9.00	
		110	5550		12.50	
		118	5590		12.50	
		126	5630		12.50	
		134	5670		12.50	
		142	5710		12.50	
	802.11ac VHT80	106	5530	MCS0	9.50	
		122	5610		12.50	
		138	5690		12.50	

Band	Mode	Channel	Frequency (MHz)	Data Rate (Mbps)	Max. Tune up	Average Power(dBm)
5.6G WIFI _1TX _ANT B	802.11a	100	5500	6	13.00	12.83
		104	5520		13.00	12.85
		108	5540		13.00	12.80
		112	5560		13.00	12.89
		116	5580		13.00	12.82
		132	5660		13.00	12.76
		136	5680		13.00	12.92
		140	5700		13.00	12.97
		144	5720		12.50	12.21
	802.11n HT20	100	5500	MCS0	13.00	Not Required
		104	5520		13.00	
		108	5540		13.00	
		112	5560		13.00	
		116	5580		13.00	
		132	5660		13.00	
		136	5680		13.00	
		140	5700		13.00	
		144	5720		13.00	
	802.11n HT40	102	5510	MCS0	9.00	
		110	5550		12.50	
		118	5590		12.50	
		126	5630		12.50	
		134	5670		12.50	
		142	5710		12.50	

Band	Mode	Channel	Frequency (MHz)	Data Rate (Mbps)	Max. Tune up	Average Power(dBm)
5.6G WIFI _1TX _ANT B	802.11ac VHT20	100	5500	MCS0	13.00	Not Required
		104	5520		13.00	
		108	5540		13.00	
		112	5560		13.00	
		116	5580		13.00	
		132	5660		13.00	
		136	5680		13.00	
		140	5700		13.00	
		144	5720		13.00	
	802.11ac VHT40	102	5510	MCS0	9.00	
		110	5550		12.50	
		118	5590		12.50	
		126	5630		12.50	
		134	5670		12.50	
		142	5710		12.50	
	802.11ac VHT80	106	5530	MCS0	9.50	
		122	5610		12.50	
		138	5690		12.50	

Band	Mode	Channel	Frequency (MHz)	Data Rate (Mbps)	ANT 1 Average Power(dBm)	ANT 2 Average Power(dBm)	Max. Tune up	Total Average Power(dBm)
5.6G WIFI _2TX _ANT _A+B	802.11a	100	5500	6	12.75	12.83	16.00	15.80
		104	5520		12.85	12.85	16.00	15.86
		108	5540		12.68	12.80	16.00	15.75
		112	5560		12.65	12.89	16.00	15.78
		116	5580		12.84	12.82	16.00	15.84
		132	5660		12.98	12.76	16.00	15.88
		136	5680		12.96	12.92	16.00	15.95
		140	5700		12.57	12.97	16.00	15.78
		144	5720		12.38	12.21	15.50	15.31
	802.11n HT20	100	5500	MCS8	Not Required	Not Required	16.00	Not Required
		104	5520				16.00	
		108	5540				16.00	
		112	5560				16.00	
		116	5580				16.00	
		132	5660				16.00	
		136	5680				16.00	
		140	5700				16.00	
		144	5720				16.00	
	802.11n HT40	102	5510	MCS8			12.00	
		110	5550				15.50	
		118	5590				15.50	
		126	5630				15.50	
		134	5670				15.50	
		142	5710				15.50	

Band	Mode	Channel	Frequency (MHz)	Data Rate (Mbps)	ANT 1 Average Power(dBm)	ANT 2 Average Power(dBm)	Max. Tune up	Total Average Power(dBm)
5.6G WIFI _2TX _ANT A+B	802.11ac VHT20	100	5500	MCS8	Not Required	Not Required	16.00	Not Required
		104	5520				16.00	
		108	5540				16.00	
		112	5560				16.00	
		116	5580				16.00	
		132	5660				16.00	
		136	5680				16.00	
		140	5700				16.00	
		144	5720				16.00	
	802.11ac VHT40	102	5510	MCS8			12.00	
		110	5550				15.50	
		118	5590				15.50	
		126	5630				15.50	
		134	5670				15.50	
		142	5710				15.50	
	802.11ac VHT80	106	5530	MCS8			12.50	
		122	5610				15.50	
		138	5690				15.50	

Note: 1) The Average conducted power of 5.6G WiFi is measured with RMS detector.
2) The tested channel results are marks in bold.

7.1.5 CONDUCTED POWER MEASUREMENTS OF WIFI 5.8G

Band	Mode	Channel	Frequency (MHz)	Data Rate (Mbps)	Max. Tune up	Average Power(dBm)
5.8G WIFI _1TX _ANT A	802.11a	149	5745	6	13.00	12.92
		153	5765		13.00	12.91
		157	5785		13.00	12.95
		161	5805		13.00	12.79
		165	5825		13.00	12.77
	802.11n HT20	149	5745	MCS0	13.00	Not Required
		153	5765		13.00	
		157	5785		13.00	
		161	5805		13.00	
		165	5825		13.00	
	802.11n HT40	151	5755	MCS0	9.50	
		159	5795		12.50	
	802.11ac VHT20	149	5745	MCS0	12.50	
		153	5765		13.00	
		157	5785		13.00	
		161	5805		13.00	
		165	5825		13.00	
	802.11ac VHT40	151	5755	MCS0	9.50	
		159	5795		12.50	
	802.11ac VHT80	155	5775	MCS0	8.00	

Band	Mode	Channel	Frequency (MHz)	Data Rate (Mbps)	Max. Tune up	Average Power(dBm)
5.8G WIFI _1TX _ANT B	802.11a	149	5745	6	13.00	12.67
		153	5765		13.00	12.84
		157	5785		13.00	12.87
		161	5805		13.00	12.73
		165	5825		13.00	12.98
	802.11n HT20	149	5745	MCS0	13.00	Not Required
		153	5765		13.00	
		157	5785		13.00	
		161	5805		13.00	
		165	5825		13.00	
	802.11n HT40	151	5755	MCS0	9.50	
		159	5795		12.50	
	802.11ac VHT20	149	5745	MCS0	12.50	
		153	5765		13.00	
		157	5785		13.00	
		161	5805		13.00	
		165	5825		13.00	
	802.11ac VHT40	151	5755	MCS0	9.50	
		159	5795		12.50	
	802.11ac VHT80	155	5775	MCS0	8.00	

Band	Mode	Channel	Frequency (MHz)	Data Rate (Mbps)	ANT 1 Average Power(dBm)	ANT 2 Average Power(dBm)	Max. Tune up	Total Average Power(dBm)
5.8G WIFI _2TX _ANT _A+B	802.11a	149	5745	6	12.92	12.67	16.00	15.81
		153	5765		12.91	12.84	16.00	15.89
		157	5785		12.95	12.87	16.00	15.92
		161	5805		12.79	12.73	16.00	15.77
		165	5825		12.77	12.98	16.00	15.89
	802.11n HT20	149	5745	MCS8	Not Required	Not Required	16.00	Not Required
		153	5765				16.00	
		157	5785				16.00	
		161	5805				16.00	
		165	5825				16.00	
	802.11n HT40	151	5755	MCS8			12.50	
		159	5795				15.50	
	802.11ac VHT20	149	5745	MCS8			15.50	
		153	5765				16.00	
		157	5785				16.00	
		161	5805				16.00	
		165	5825				16.00	
	802.11ac VHT40	151	5755	MCS8			12.50	
		159	5795				15.50	
	802.11ac VHT80	155	5775	MCS8			11.00	

Note: 1) The Average conducted power of 5.8G WiFi is measured with RMS detector.
2) The tested channel results are marks in bold.

7.1.6 CONDUCTED POWER MEASUREMENTS OF BT

BT	Average Conducted Power(dBm)			
	Max.	CH0	CH39	CH78
	Tune up	2402MHz	2441MHz	2480MHz
DH5	5.00	3.74	4.44	4.68
2DH5	4.00	2.34	3.13	3.28
3DH5	2.50	1.01	2.09	2.31

BT	Average Conducted Power(dBm)			
	Max.	CH0	CH19	CH39
	Tune up	2402MHz	2441MHz	2480MHz
BLE(1M)	0.00	-1.90	-1.91	-1.45

Note: The Average conducted power of BT is measured with RMS detector.

7.2 SAR TEST RESULTS

General Notes:

- 1) Per KDB447498 D01, all measurement SAR results are scaled to the maximum tune-up tolerance limit to demonstrate compliant.
- 2) Per KDB447498 D01, testing of other required channels within the operating mode of a frequency band is not required when the reported 1-g or 10-g SAR for the mid-band or highest output power channel is: ≤ 0.8 W/kg or 2.0 W/kg, for 1-g or 10-g respectively, when the transmission band is ≤ 100 MHz. When the maximum output power variation across the required test channels is $> \frac{1}{2}$ dB, instead of the middle channel, the highest output power channel must be used.
- 3) Per KDB865664 D01, for each frequency band, repeated SAR measurement is required only when the measured SAR is ≥ 0.8 W/kg; if the deviation among the repeated measurement is $\leq 20\%$, and the measured SAR < 1.45 W/kg, only one repeated measurement is required.
- 4) Per KDB941225 D06, the DUT Dimension is bigger than 9 cm x 5 cm, so 10mm is chosen as the test separation distance for Hotspot mode. When the antenna-to-edge distance is greater than 2.5cm, such position does not need to be tested.
- 5) Per KDB648474 D04, SAR is evaluated without a headset connected to the device. When the standalone reported body-worn SAR is ≤ 1.2 W/kg, no additional SAR evaluations using a headset are required.
- 6) Per KDB865664 D02, SAR plot is only required for the highest measured SAR in each exposure configuration, wireless mode and frequency band combination; Plots are also required when the measured SAR is > 1.5 W/kg, or > 7.0 W/kg for occupational exposure. The published RF exposure KDB procedures may require additional plots; for example, to support SAR to peak location separation ratio test exclusion and/or volume scan post-processing.

WLAN Notes:

1. For exposure conditions with multiple test positions, such as handset operating next to the ear, devices with hotspot mode, procedures for initial test position can be applied. Using the transmission mode determined by the DSSS procedure or initial test configuration, area scans are measured for all positions in an exposure condition. The test position with the highest extrapolated (peak) SAR is used as the initial test position. When the reported SAR of the initial test position is ≤ 0.4 W/kg, further SAR measurement is not required for the other (remaining) test positions. Otherwise, SAR is evaluated at the subsequent highest peak SAR position until the reported SAR result is ≤ 0.8 W/kg or all test positions are measured.
2. Justification for test configurations for WLAN per KDB Publication 248227 for 2.4GHZ WIFI single transmission chain operations, the highest measured maximum output power Channel for DSSS was selected for SAR measurement. SAR for OFDM modes (2.4GHz 802.11g/n) was not required due to the maximum allowed powers and the highest reported DSSS SAR. See Section 7.1 for more information.
3. Justification for test configurations for WLAN per KDB Publication 248227 for 5GHZ WIFI single transmission chain operations, the initial test configuration was selected according to the transmission mode with the highest maximum allowed power. Other transmission modes were not investigated since the highest reported SAR for initial test configuration adjusted by the ratio of maximum output powers is less than 1.2W/kg. See Section 7.1 for more information.

7.2.1 SAR MEASUREMENT RESULT

1. SAR Measurement Result of 2.4G WiFi

Test No.	Band	Channel	Test Position	Separation Distance (cm)	Ant	Ant Vendor	Platform	Battery	Data Rate	Maximum Tune-up (dBm)	Conducted Power (dBm)	SAR 1g (W/kg)	SAR 10g (W/kg)	Reported 1g SAR
W01	802.11b	6	Back of Keyboard	0	1	Southstar	Notebook	1	1	17	16.78	0.321	0.162	0.338
W02	802.11b	6	Back of Screen	2.5	1	Southstar	Notebook	1	1	17	16.78	0.092	0.058	0.096
W03	802.11b	6	Rear Face	0	1	Southstar	Tablet	1	1	17	16.78	0.146	0.087	0.154
W04	802.11b	6	Bottom Side	0	1	Southstar	Tablet	1	1	17	16.78	0.747	0.348	0.786
W05	802.11b	1	Bottom Side	0	1	Southstar	Tablet	1	1	17	16.7	0.684	0.347	0.733
W06	802.11b	11	Bottom Side	0	1	Southstar	Tablet	1	1	17	16.62	0.980	0.471	1.070
W07	802.11b	11	Bottom Side	0	1	INPAQ	Tablet	1	1	17	16.62	0.835	0.378	0.911
W08	802.11b	11	Bottom Side	0	1	Southstar	Tablet	2	1	17	16.62	0.962	0.438	1.050
W10	802.11b	6	Back of Keyboard	0	2	Southstar	Notebook	1	1	17	16.91	0.306	0.152	0.312
W11	802.11b	6	Back of Screen	2.5	2	Southstar	Notebook	1	1	17	16.91	0.068	0.039	0.069
W12	802.11b	6	Rear Face	0	2	Southstar	Tablet	1	1	17	16.91	0.211	0.101	0.215
W13	802.11b	6	Bottom Side	0	2	Southstar	Tablet	1	1	17	16.91	0.826	0.382	0.843
W14	802.11b	1	Bottom Side	0	2	Southstar	Tablet	1	1	17	16.89	0.659	0.307	0.676
W15	802.11b	11	Bottom Side	0	2	Southstar	Tablet	1	1	17	16.76	0.668	0.322	0.706
W16	802.11b	6	Bottom Side	0	2	INPAQ	Tablet	1	1	17	16.91	0.756	0.325	0.772
W17	802.11b	6	Bottom Side	0	2	Southstar	Tablet	2	1	17	16.91	0.808	0.352	0.825
W19	802.11g	6	Back of Keyboard	0	1	Southstar	Notebook	1	6	18	17.67	0.276	0.141	0.298
W20	802.11g	6	Back of Screen	2.5	1	Southstar	Notebook	1	6	18	17.75	0.096	0.059	0.101
W21	802.11g	6	Rear Face	0	1	Southstar	Tablet	1	6	18	17.75	0.175	0.096	0.185
W22	802.11g	6	Bottom Side	0	1	Southstar	Tablet	1	6	18	17.75	0.868	0.411	0.919
W23	802.11g	1	Bottom Side	0	1	Southstar	Tablet	1	6	16	15.55	0.536	0.235	0.595
W24	802.11g	11	Bottom Side	0	1	Southstar	Tablet	1	6	18	17.38	0.900	0.417	1.038
W25	802.11g	11	Bottom Side	0	1	INPAQ	Tablet	1	6	18	17.38	0.822	0.375	0.948
W26	802.11g	11	Bottom Side	0	1	Southstar	Tablet	2	6	18	17.38	0.865	0.382	0.998
W28	802.11g	6	Back of Keyboard	0	2	Southstar	Notebook	1	6	18	17.76	0.448	0.210	0.473
W29	802.11g	6	Back of Screen	2.5	2	Southstar	Notebook	1	6	18	17.76	0.110	0.062	0.116
W30	802.11g	6	Rear Face	0	2	Southstar	Tablet	1	6	18	17.76	0.306	0.145	0.323
W31	802.11g	6	Bottom Side	0	2	Southstar	Tablet	1	6	18	17.76	0.752	0.419	0.795
W32	802.11g	1	Bottom Side	0	2	Southstar	Tablet	1	6	16	15.44	0.541	0.244	0.615
W33	802.11g	11	Bottom Side	0	2	Southstar	Tablet	1	6	18	17.41	0.888	0.425	1.017
W34	802.11g	11	Bottom Side	0	2	INPAQ	Tablet	1	6	18	17.41	0.723	0.385	0.828
W35	802.11g	11	Bottom Side	0	2	Southstar	Tablet	2	6	18	17.41	0.798	0.393	0.914

Note: The value with boldface is the maximum SAR Value of each test band.

2. SAR Measurement Result of 5G WiFi

Test No.	Band	Channel	Test Position	Separation Distance (cm)	Ant	Ant Vendor	Platform	Battery	Data Rate	Maximum Tune-up (dBm)	Conducted Power (dBm)	SAR 1g (W/kg)	SAR 10g (W/kg)	Reported 1g SAR
W37	802.11a	36	Back of Keyboard	0	1	Southstar	Notebook	1	6	13	12.97	0.242	0.073	0.244
W38	802.11a	36	Back of Screen	2.5	1	Southstar	Notebook	1	6	13	12.97	0.136	0.051	0.137
W39	802.11a	36	Rear Face	0	1	Southstar	Tablet	1	6	13	12.97	0.126	0.039	0.127
W40	802.11a	36	Bottom Side	0	1	Southstar	Tablet	1	6	13	12.97	0.673	0.178	0.678
W41	802.11a	44	Bottom Side	0	1	Southstar	Tablet	1	6	13	12.92	0.565	0.152	0.576
W42	802.11a	48	Bottom Side	0	1	Southstar	Tablet	1	6	13	12.85	0.563	0.138	0.583
W43	802.11a	36	Bottom Side	0	1	INPAQ	Tablet	1	6	13	12.97	0.536	0.103	0.540
W44	802.11a	36	Bottom Side	0	1	Southstar	Tablet	2	6	13	12.97	0.638	0.162	0.642
W46	802.11a	44	Back of Keyboard	0	2	Southstar	Notebook	1	6	13	12.89	0.188	0.072	0.193
W47	802.11a	44	Back of Screen	2.5	2	Southstar	Notebook	1	6	13	12.89	0.165	0.075	0.169
W48	802.11a	44	Rear Face	0	2	Southstar	Tablet	1	6	13	12.89	0.139	0.052	0.143
W49	802.11a	44	Bottom Side	0	2	Southstar	Tablet	1	6	13	12.89	0.660	0.177	0.677
W50	802.11a	48	Bottom Side	0	2	Southstar	Tablet	1	6	13	12.81	0.455	0.161	0.476
W51	802.11a	36	Bottom Side	0	2	Southstar	Tablet	1	6	13	12.8	0.584	0.171	0.612
W52	802.11a	44	Bottom Side	0	2	INPAQ	Tablet	1	6	13	12.89	0.593	0.182	0.608
W53	802.11a	44	Bottom Side	0	2	Southstar	Tablet	2	6	13	12.89	0.614	0.168	0.630
W55	802.11a	60	Back of Keyboard	0	1	Southstar	Notebook	1	6	13	12.98	0.205	0.077	0.206
W56	802.11a	60	Back of Screen	2.5	1	Southstar	Notebook	1	6	13	12.98	0.128	0.042	0.129
W57	802.11a	60	Rear Face	0	1	Southstar	Tablet	1	6	13	12.98	0.111	0.041	0.112
W58	802.11a	60	Bottom Side	0	1	Southstar	Tablet	1	6	13	12.98	0.583	0.176	0.586
W59	802.11a	64	Bottom Side	0	1	Southstar	Tablet	1	6	13	12.94	0.501	0.148	0.508
W60	802.11a	52	Bottom Side	0	1	Southstar	Tablet	1	6	13	12.93	0.836	0.224	0.850
W61	802.11a	52	Bottom Side	0	1	INPAQ	Tablet	1	6	13	12.93	0.752	0.182	0.764
W62	802.11a	52	Bottom Side	0	1	Southstar	Tablet	2	6	13	12.93	0.775	0.196	0.788
W64	802.11a	52	Back of Keyboard	0	2	Southstar	Notebook	1	6	13	12.95	0.195	0.061	0.197
W65	802.11a	52	Back of Screen	2.5	2	Southstar	Notebook	1	6	13	12.95	0.131	0.049	0.133
W66	802.11a	52	Rear Face	0	2	Southstar	Tablet	1	6	13	12.95	0.139	0.038	0.141
W67	802.11a	52	Bottom Side	0	2	Southstar	Tablet	1	6	13	12.95	0.650	0.159	0.658
W68	802.11a	56	Bottom Side	0	2	Southstar	Tablet	1	6	13	12.89	0.645	0.159	0.662
W69	802.11a	64	Bottom Side	0	2	Southstar	Tablet	1	6	13	12.75	0.825	0.192	0.874
W70	802.11a	64	Bottom Side	0	2	INPAQ	Tablet	1	6	13	12.75	0.748	0.163	0.792
W71	802.11a	64	Bottom Side	0	2	Southstar	Tablet	2	6	13	12.75	0.806	0.190	0.854
W73	802.11a	132	Back of Keyboard	0	1	Southstar	Notebook	1	6	13	12.98	0.268	0.097	0.269
W74	802.11a	132	Back of Screen	2.5	1	Southstar	Notebook	1	6	13	12.98	0.190	0.083	0.191
W75	802.11a	132	Rear Face	0	1	Southstar	Tablet	1	6	13	12.98	0.145	0.039	0.146
W76	802.11a	132	Bottom Side	0	1	Southstar	Tablet	1	6	13	12.98	0.682	0.195	0.685
W77	802.11a	136	Bottom Side	0	1	Southstar	Tablet	1	6	13	12.96	0.569	0.179	0.574
W78	802.11a	104	Bottom Side	0	1	Southstar	Tablet	1	6	13	12.85	0.635	0.182	0.657
W79	802.11a	132	Bottom Side	0	1	INPAQ	Tablet	1	6	13	12.98	0.622	0.152	0.625
W80	802.11a	132	Bottom Side	0	1	Southstar	Tablet	2	6	13	12.98	0.647	0.166	0.650

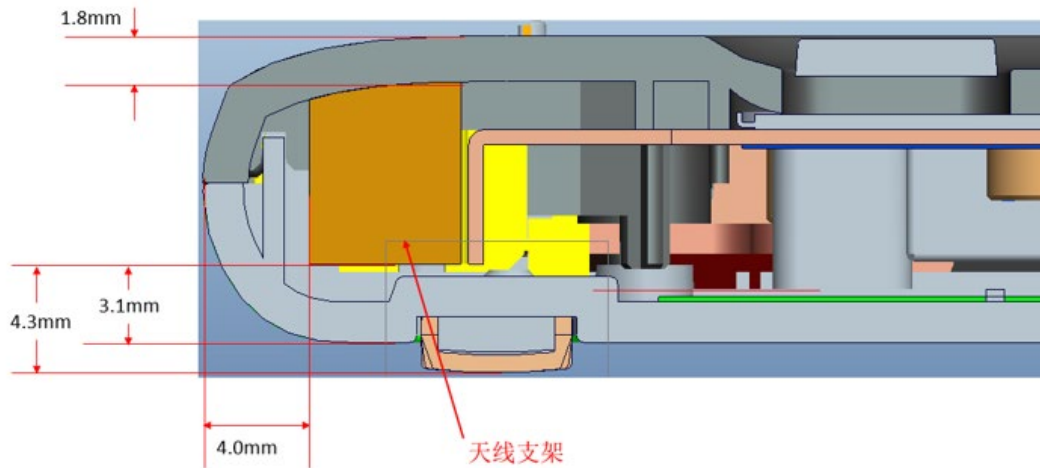
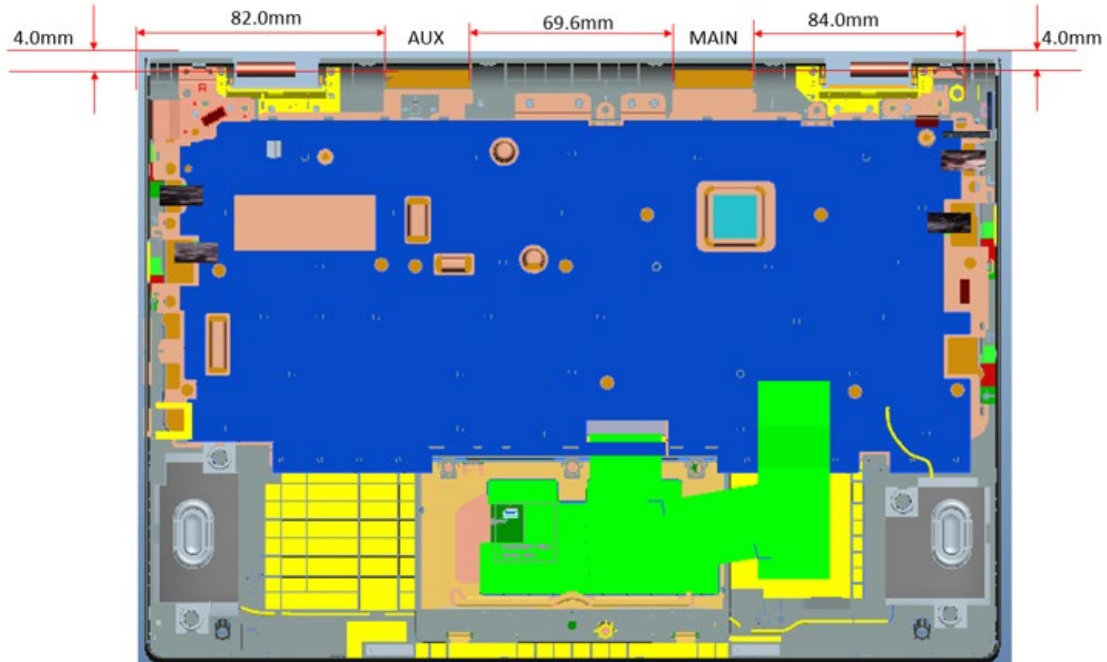
Test No.	Band	Channel	Test Position	Separation Distance (cm)	Ant	Ant Vendor	Platform	Battery	Data Rate	Maximum Tune-up (dBm)	Conducted Power (dBm)	SAR 1g (W/kg)	SAR 10g (W/kg)	Reported 1g SAR
W82	802.11a	140	Back of Keyboard	0	2	Southstar	Notebook	1	6	13	12.97	0.216	0.069	0.217
W83	802.11a	140	Back of Screen	2.5	2	Southstar	Notebook	1	6	13	12.97	0.198	0.070	0.199
W84	802.11a	140	Rear Face	0	2	Southstar	Tablet	1	6	13	12.97	0.145	0.043	0.146
W85	802.11a	140	Bottom Side	0	2	Southstar	Tablet	1	6	13	12.97	0.770	0.192	0.775
W86	802.11a	136	Bottom Side	0	2	Southstar	Tablet	1	6	13	12.92	0.910	0.217	0.927
W87	802.11a	112	Bottom Side	0	2	Southstar	Tablet	1	6	13	12.89	0.753	0.178	0.772
W88	802.11a	136	Bottom Side	0	2	INPAQ	Tablet	1	6	13	12.92	0.826	0.198	0.841
W89	802.11a	136	Bottom Side	0	2	Southstar	Tablet	2	6	13	12.92	0.863	0.211	0.879
W91	802.11a	157	Back of Keyboard	0	1	Southstar	Notebook	1	6	13	12.95	0.239	0.093	0.242
W92	802.11a	157	Back of Screen	2.5	1	Southstar	Notebook	1	6	13	12.95	0.124	0.058	0.125
W93	802.11a	157	Rear Face	0	1	Southstar	Tablet	1	6	13	12.95	0.105	0.049	0.106
W94	802.11a	157	Bottom Side	0	1	Southstar	Tablet	1	6	13	12.95	0.561	0.195	0.567
W95	802.11a	149	Bottom Side	0	1	Southstar	Tablet	1	6	13	12.92	0.651	0.201	0.663
W96	802.11a	153	Bottom Side	0	1	Southstar	Tablet	1	6	13	12.91	0.533	0.183	0.544
W97	802.11a	149	Bottom Side	0	1	INPAQ	Tablet	1	6	13	12.92	0.582	0.151	0.593
W98	802.11a	149	Bottom Side	0	1	Southstar	Tablet	2	6	13	12.92	0.603	0.183	0.614
W100	802.11a	165	Back of Keyboard	0	2	Southstar	Notebook	1	6	13	12.98	0.238	0.087	0.239
W101	802.11a	165	Back of Screen	2.5	2	Southstar	Notebook	1	6	13	12.98	0.121	0.033	0.122
W102	802.11a	165	Rear Face	0	2	Southstar	Tablet	1	6	13	12.98	0.115	0.044	0.116
W103	802.11a	165	Bottom Side	0	2	Southstar	Tablet	1	6	13	12.98	0.639	0.200	0.642
W104	802.11a	157	Bottom Side	0	2	Southstar	Tablet	1	6	13	12.87	0.745	0.216	0.768
W105	802.11a	153	Bottom Side	0	2	Southstar	Tablet	1	6	13	12.84	0.769	0.218	0.798
W106	802.11a	153	Bottom Side	0	2	INPAQ	Tablet	1	6	13	12.84	0.658	0.188	0.683
W107	802.11a	153	Bottom Side	0	2	Southstar	Tablet	2	6	13	12.84	0.728	0.195	0.755

Note: The value with boldface is the maximum SAR Value of each test band.

7.3 MULTIPLE TRANSMITTER EVALUATION

The following tables list information which is relevant for the decision if a simultaneous transmit evaluation is necessary according to FCC KDB 447498D01 General RF Exposure Guidance v06.

The location of the antennas inside the EUT is shown as below:



7.3.1 STAND-ALONE SAR TEST EXCLUSION

Per FCC KDB 447498 D01, the 1-g SAR and 10-g SAR test exclusion thresholds for 100 MHz to 6 GHz at test separation distances ≤ 50 mm are determined by:

$[(\text{max. power of channel, including tune-up tolerance, mW})/(\text{min. test separation distance, mm})][\sqrt{f(\text{GHz})}] \leq 3.0$ for 1-g SAR and ≤ 7.5 for product specific 10-g SAR, where:

- $f(\text{GHz})$ is the RF channel transmit frequency in GHz
- Power and distance are rounded to the nearest mW and mm before calculation
- The result is rounded to one decimal place for comparison

When the minimum test separation distance is < 5 mm, a distance of 5 mm is applied to determine SAR test exclusion.

Standalone SAR test exclusion for BT

Mode	Position	P_{max} (dBm)*	P_{max} (mW)	Distance (mm)	f (GHz)	Calculation Result	SAR Exclusion threshold	SAR test exclusion
BT	Body	5	3.16	5	2.48	1.0	7.5	Yes

Note: * - maximum possible output power declared by manufacturer

When standalone SAR test exclusion applies to an antenna that transmits simultaneously with other antennas, the standalone SAR must be estimated according to following to determine simultaneous transmission SAR test exclusion:

$(\text{max. power of channel, including tune-up tolerance, mW})/(\text{min. test separation distance, mm}) \cdot [\sqrt{f(\text{GHz})}/x] \text{ W/kg}$ for test separation distances ≤ 50 mm, where $x = 7.5$ for 1-g SAR and $x = 18.75$ for 10-g SAR.

When the minimum test separation distance is < 5 mm, a distance of 5 mm is applied to determine SAR test exclusion

According to KDB 447498 D01, when standalone SAR test exclusion applies to an antenna that transmits simultaneously with other antennas, the standalone SAR was estimated according to following formula to result in substantially conservative SAR values of $\leq 0.4 \text{ W/kg}$ to determine simultaneous transmission SAR test exclusion.

$$\text{Estimated SAR} = \frac{\text{Max. Tune up Power}_{(\text{mW})}}{\text{Min. Test Separation Distance}_{(\text{mm})}} \times \frac{\sqrt{f_{(\text{GHz})}}}{7.5}$$

Estimated SAR calculation

Mode	Position	P_{max} (dBm)*	P_{max} (mW)	Distance (mm)	f (GHz)	X	Estimated SAR (W/kg)*
BT	Body	5	3.16	5	2.48	7.5	0.133

Note: * - maximum possible output power declared by manufacturer

7.3.2 SIMULTANEOUS TRANSMISSION CONDITIONS

Per FCC KDB 447498D01, SAR compliance for simultaneous transmission must be considered when the maximum duration of overlapping transmissions, including network hand-offs, is greater than 30 seconds. This device contains multiple transmitters that may operate simultaneously, and therefore requires a simultaneous transmission analysis.

The Simultaneous Transmission Possibilities of this device are as below:

No.	Configuration	Body
1	WLAN 2.4GHz Ant A + WLAN 2.4GHz Ant B	Yes
2	WLAN 5.2GHz Ant A + WLAN 5.2GHz Ant B	Yes
3	WLAN 5.3GHz Ant A + WLAN 5.3GHz Ant B	Yes
4	WLAN 5.6GHz Ant A + WLAN 5.6GHz Ant B	Yes
5	WLAN 5.8GHz Ant A + WLAN 5.8GHz Ant B	Yes
6	BT Ant B + WLAN 2.4GHz Ant A	Yes
7	BT Ant B + WLAN 5.2GHz Ant A	Yes
8	BT Ant B + WLAN 5.3GHz Ant A	Yes
9	BT Ant B + WLAN 5.6GHz Ant A	Yes
10	BT Ant B + WLAN 5.8GHz Ant A	Yes

Note: Only the Ant B supports BT function.

7.3.3 SAR UMMATION SCENARIO

About WIFI and Bluetooth transmit simultaneously

Position		Back of Keyboard	Back of Screen	Rear Face	Bottom Side
Band					
ANT A	802.11b	0.338	0.096	0.154	1.070
	802.11g	0.298	0.101	0.185	1.038
	5.2G WLAN	0.244	0.137	0.127	0.678
	5.3G WLAN	0.206	0.129	0.112	0.850
	5.6G WLAN	0.269	0.191	0.146	0.685
	5.8G WLAN	0.242	0.125	0.106	0.663
ANT B	802.11b	0.312	0.069	0.215	0.843
	802.11g	0.473	0.116	0.323	1.017
	5.2G WLAN	0.193	0.169	0.143	0.677
	5.3G WLAN	0.197	0.133	0.141	0.874
	5.6G WLAN	0.217	0.199	0.146	0.927
	5.8G WLAN	0.239	0.122	0.116	0.798
	Bluetooth	/	/	0.133	0.133
MAX \sum SAR _{1g}		0.771	0.390	0.508	Refer to SPLSR results

Reported SAR _{1g}		Ant A 802.11b	Ant A 802.11g	Ant A WiFi 5.2G	Ant A WiFi 5.3G	Ant A WiFi 5.6G	Ant A WiFi 5.8G	MAX \sum SAR _{1g}
Test Position								
Bottom Side	Ant B 802.11b	1.913	/	/	/	/	/	Refer to SPLSR results (1)
	Ant B 802.11g	/	2.055	/	/	/	/	Refer to SPLSR results (2)
	Ant B WiFi 5.2G	/	/	1.355	/	/	/	1.355
	Ant B WiFi 5.3G	/	/	/	1.724	/	/	Refer to SPLSR results (3)
	Ant B WiFi 5.6G	/	/	/	/	1.612	/	Refer to SPLSR results (4)
	Ant B WiFi 5.8G	/	/	/	/	/	1.461	1.461
	Bluetooth	1.203	1.171	0.811	0.983	0.818	0.796	1.203

Note:

(1) MAX. \sum SAR_{1g}<1.6 W/Kg, the SAR to peak location separation ratio should not be considered, otherwise, see section 7.3.3 for more information.

(2) The highest simultaneous SAR value=1.461W/Kg, per KDB690783 D01.

7.3.4 SIMULTANEOUS TRANSMISSION CONCLUSION

According to KDB447498 D01, When the sum of SAR is larger than limit, SAR test exclusion is determined by the SAR to peak location separation ratio (SPLSR). When the SAR to peak location ratio for each pair of antennas is 0.04 for all antenna pairs in the configuration to qualify for 1-g SAR test exclusion. When 10-g SAR applies, the ratio must be ≤ 0.10 .

When SAR is measured for both antennas in the pair the peak location separation distance is computed by the following formula:

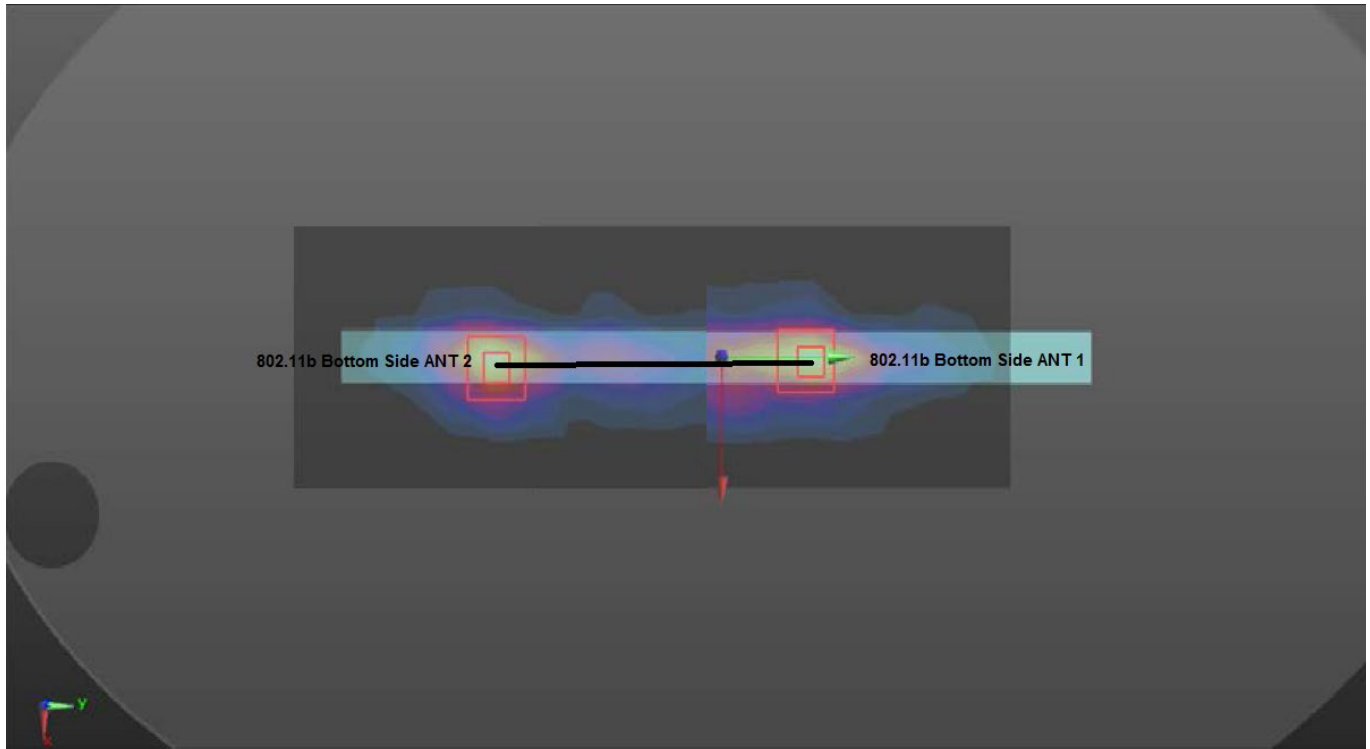
$$\text{Distance}_{\text{Tx1-Tx2}} = R_i = \sqrt{(x_1 - x_2)^2 + (y_1 - y_2)^2 + (z_1 - z_2)^2}$$

$$\text{SPLS Ratio} = (\text{SAR}_1 + \text{SAR}_2)^{1.5} / R_i$$

When standalone test exclusion applies, SAR is estimated; the peak location is assumed to be at the feed-point or geometric center of the antenna. Due to curvatures on the SAM phantom, when SAR is estimated for one of the antennas in an antenna pair, the measured peak SAR location should be translated onto the test device to determine the peak location separation for the antenna pair. The ERP location on the phantom is aligned with the ERP location on the handset, with 6mm separation in the z coordinate due to the ear spacer. A measured peak location can be translated onto the handset, with respect to the ERP location, by ignoring the 6 mm offset in the z coordinate. The assumed peak location of the antenna with estimated SAR can also be determined with respect to the ERP location on the handset. The peak location separation distance is estimated by the x and y coordinated of the peaks, referenced to the ERP location. While flat phantoms are not expected to have these issues, the same peak translation approach should be applied to determine peak location separation.

(1) The sum of aggregate 1g SAR was above 1.6 W/kg for Back of Keyboard configuration with Ant A 802.11b and Ant B 802.11b.

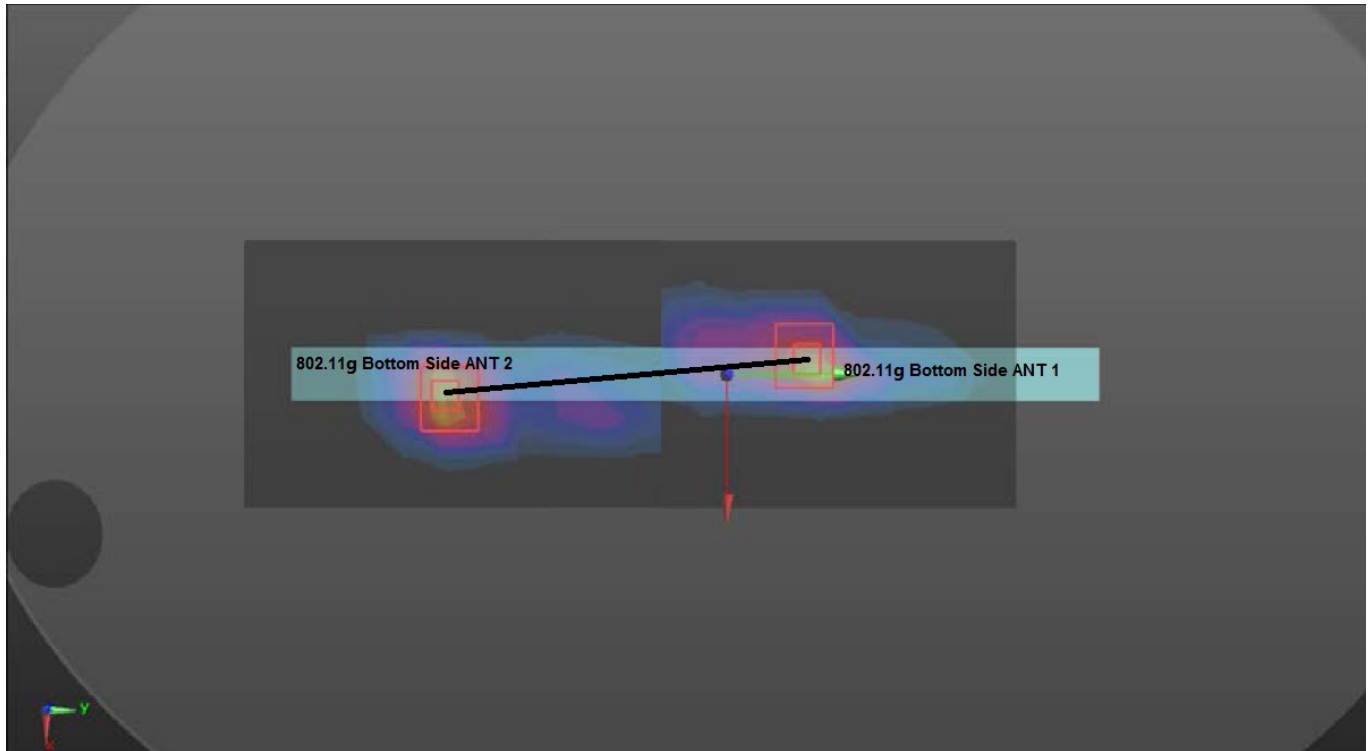
The Peak SAR location is as below:



Mode	Reported SAR _{1g}	Peak SAR _{1g}	X	Y	Z	D(mm)	SPLSR	Ratio Limit	Simultaneous SAR
	mW/g	mW/g	m	m	m				
Ant A 802.11b	1.070	1.26	0.0015	0.0305	-0.181	112.5	0.024	0.04	No
Ant B 802.11b	0.843	1.08	0.003	-0.082	-0.181				

(2) The sum of aggregate 1g SAR was above 1.6 W/kg for Back of Keyboard configuration with Ant A 802.11g and Ant B 802.11g.

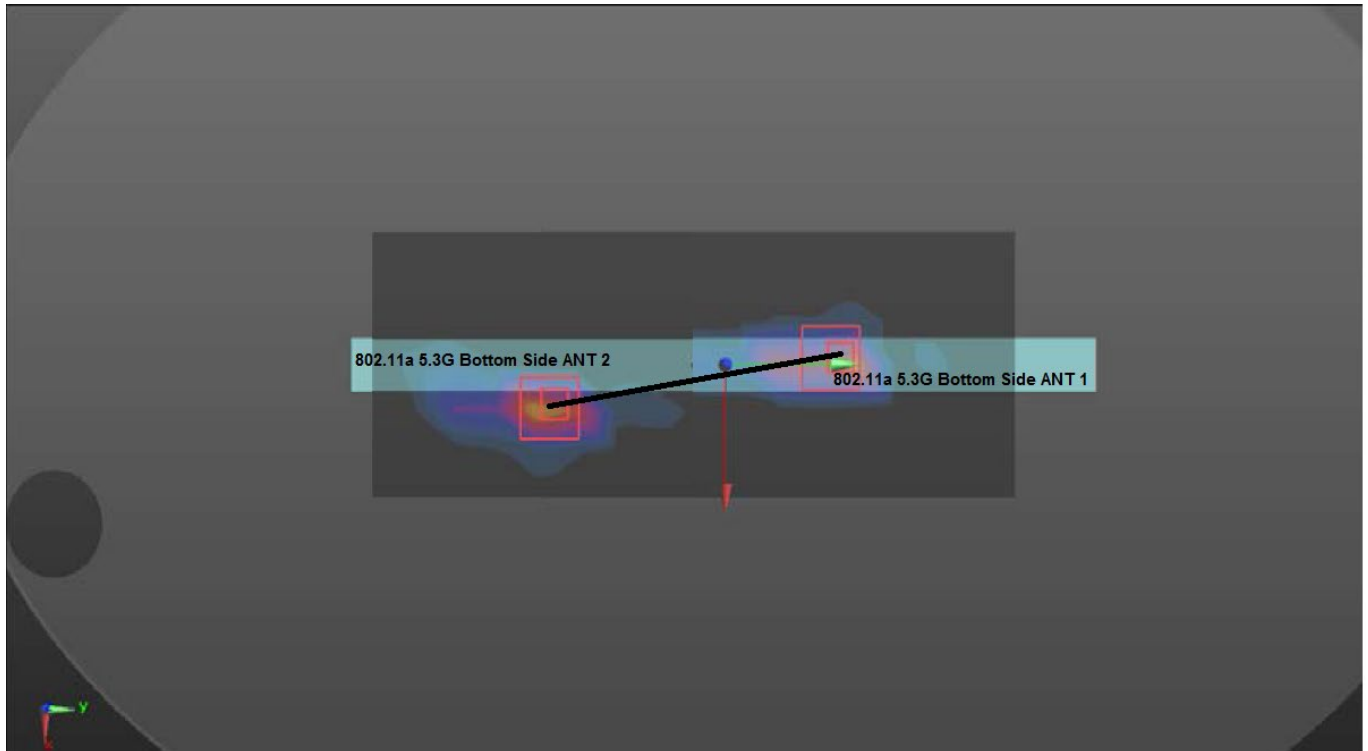
The Peak SAR location is as below:



Mode	Reported SAR _{1g}	Peak SAR _{1g}	X	Y	Z	D(mm)	SPLSR	Ratio Limit	Simultaneous SAR
	mW/g	mW/g	m	m	m				
Ant A 802.11g	1.038	1.18	-0.006	0.0305	-0.181	121.3	0.024	0.04	No
Ant B 802.11g	1.017	1.11	0.0075	-0.09	-0.181				

(3) The sum of aggregate 1g SAR was above 1.6 W/kg for Back of Keyboard configuration with Ant A WIFI 5.3G and Ant B WIFI 5.3G.

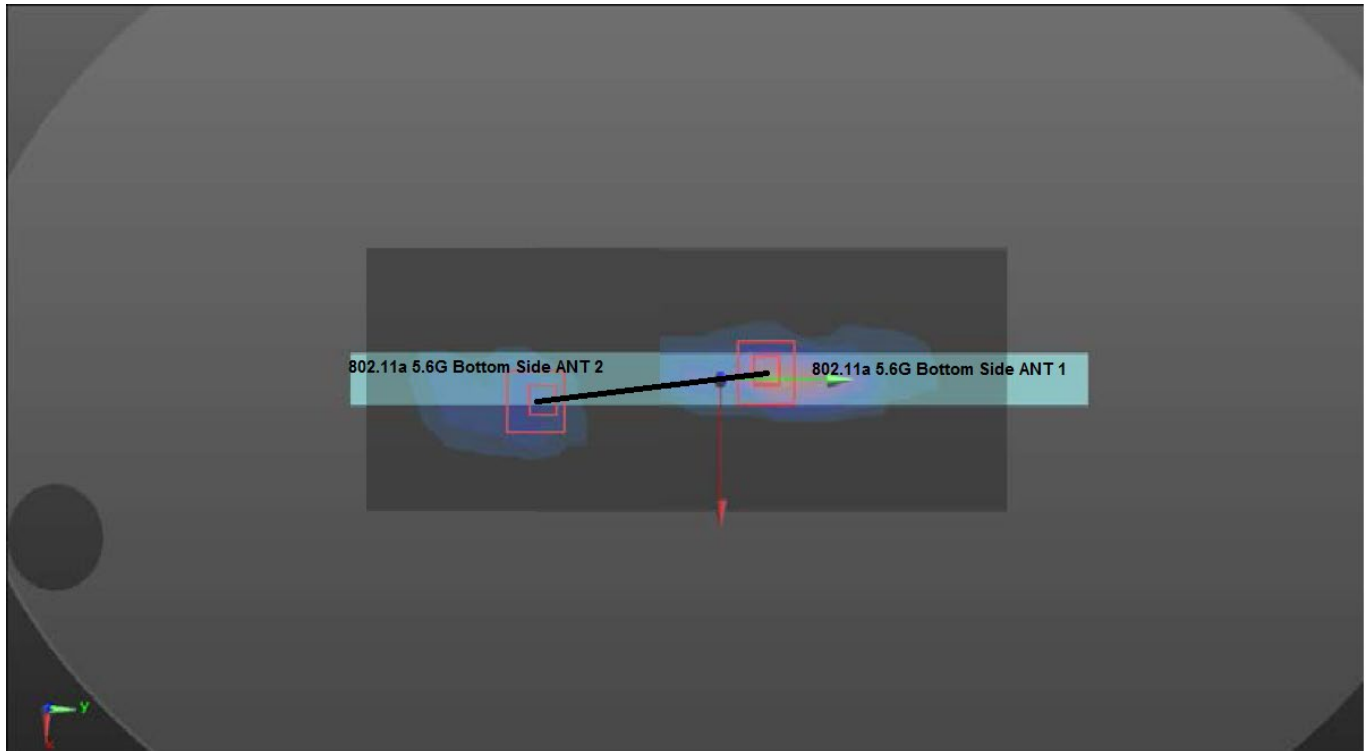
The Peak SAR location is as below:



Mode	Reported SAR _{1g}	Peak SAR _{1g}	X	Y	Z	D(mm)	SPLSR	Ratio Limit	Simultaneous SAR
	mW/g	mW/g	m	m	m				
Ant A WiFi 5.3G	0.850	2.23	-0.0015	0.047	-0.182	99.2	0.023	0.04	No
Ant B WiFi 5.3G	0.874	1.52	0.0165	-0.0505	-0.183				

(4) The sum of aggregate 1g SAR was above 1.6 W/kg for Back of Keyboard configuration with Ant A WIFI 5.6G and Ant B WIFI 5.6G.

The Peak SAR location is as below:

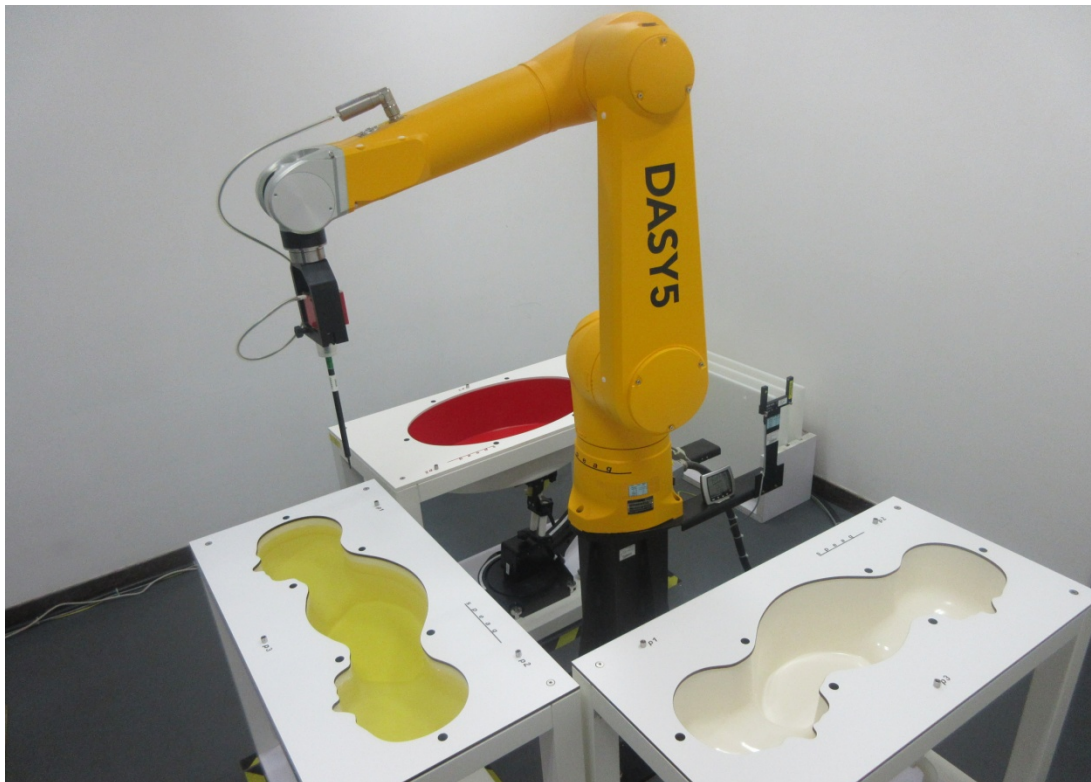


Mode	Reported SAR _{1g}	Peak SAR _{1g}	X	Y	Z	D(mm)	SPLSR	Ratio Limit	Simultaneous SAR
	mW/g	mW/g	m	m	m				
Ant A WiFi 5.6G	0.685	2.27	-0.0015	0.0405	-0.183	91.4	0.022	0.04	No
Ant B WiFi 5.6G	0.927	2.52	0.0075	-0.0505	-0.182				

APPENDIX

1. TEST LAYOUT

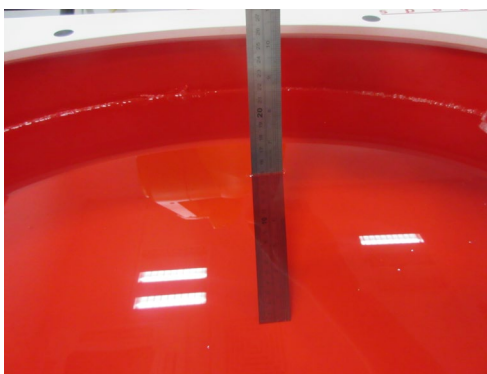
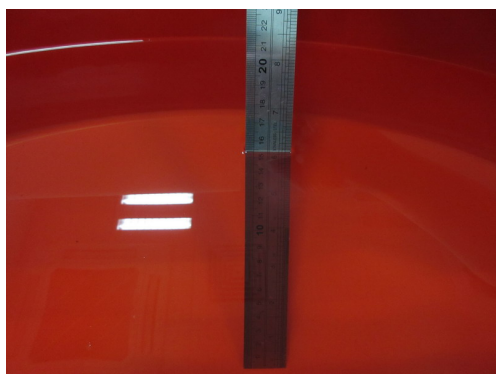
Specific Absorption Rate Test Layout



Liquid depth in the flat Phantom ($\geq 15\text{cm}$ depth)

HSL_2300MHz-2700MHz_15.3cm

HSL_5GHz_15.1cm



Appendix A. SAR Plots of System Verification

(Pls See 2006C134-1-FCC SAR_WLAN Module_abgn for QCNFA344A_Appendix A.)

Appendix B. SAR Plots of SAR Measurement

(Pls See 2006C134-1-FCC SAR_WLAN Module_abgn for QCNFA344A_Appendix B.)

Appendix C. Calibration Certificate

(Pls See 2006C134-1-FCC SAR_WLAN Module_abgn for QCNFA344A_Appendix C.)

Appendix D. Photographs of the Test Set-Up

(Pls See 2006C134-1-FCC SAR_WLAN Module_abgn for QCNFA344A_Appendix D.)

End of Test Report