

Installing heat sink assembly

Heat sink assembly comprises of heat sink and the system fan.

- 1 Align the heat sink assembly with screw holders on the system board and connect the fan cable to the connector on the system board..

NOTE: Ensure to first connect the fan cable to the system board before securing the heat-sink assembly onto the system board.

- 2 Tighten the M2 x 5 screws to secure the fan to the system board

NOTE: Ensure to connect fan cable before installing heatsink.

- 3 Install the :
 - a battery
 - b base cover
- 4 Follow the procedure in [After working inside your computer](#).

Power connector port

Removing power connector port

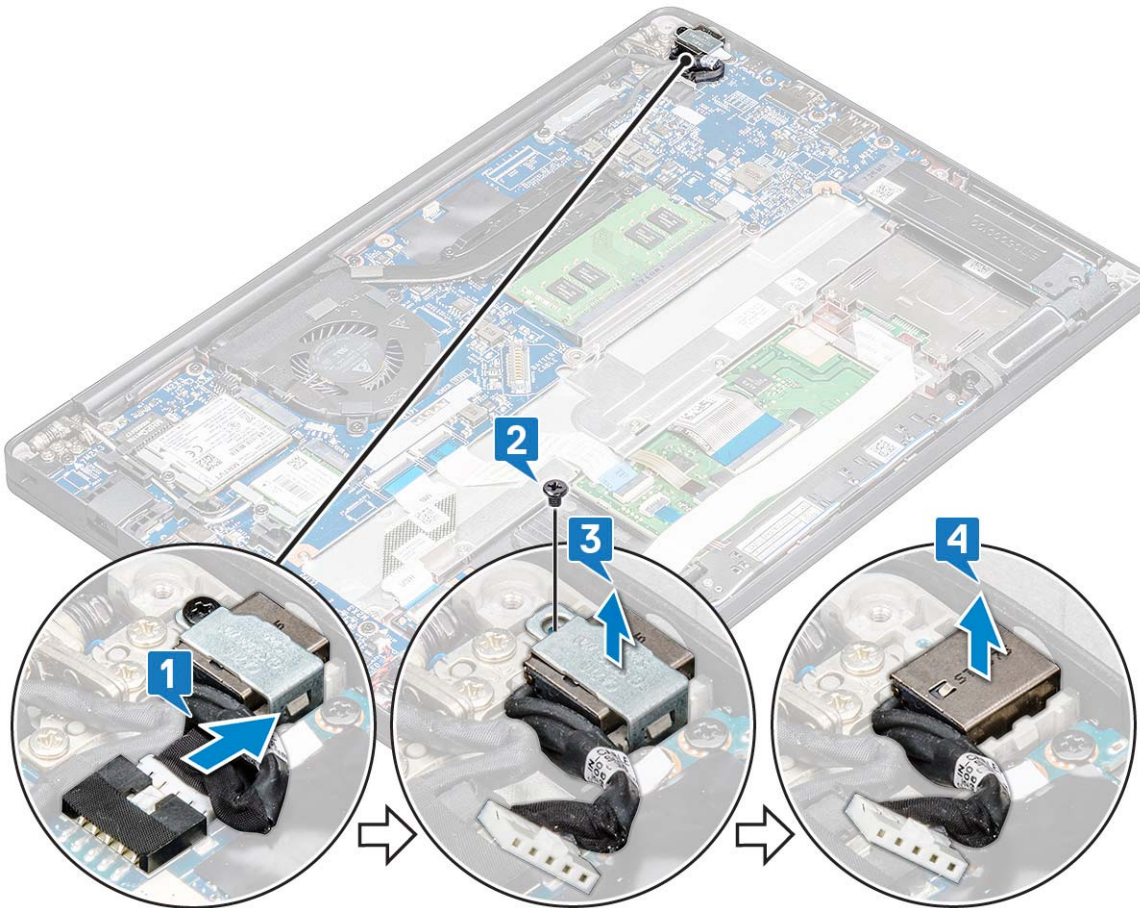
- 1 Follow the procedure in [Before working inside your computer](#).
- 2 Remove the :
 - a base cover
 - b battery
- 3 To remove the power connector port:

- a Disconnect the power connector port cable from the system board [1].

① **NOTE:** Ensure to remove the adhesive tape that covers the connector.

① **NOTE:** Use a plastic scribe to release the cable from the connector. Do not pull the cable as it may result in breakage

- b Remove the M2.0x3.0 screw (1) to release the metal bracket on the power connector port [2].
- c Lift the metal bracket from the computer [3].
- d Remove the power connector port from the computer [4].



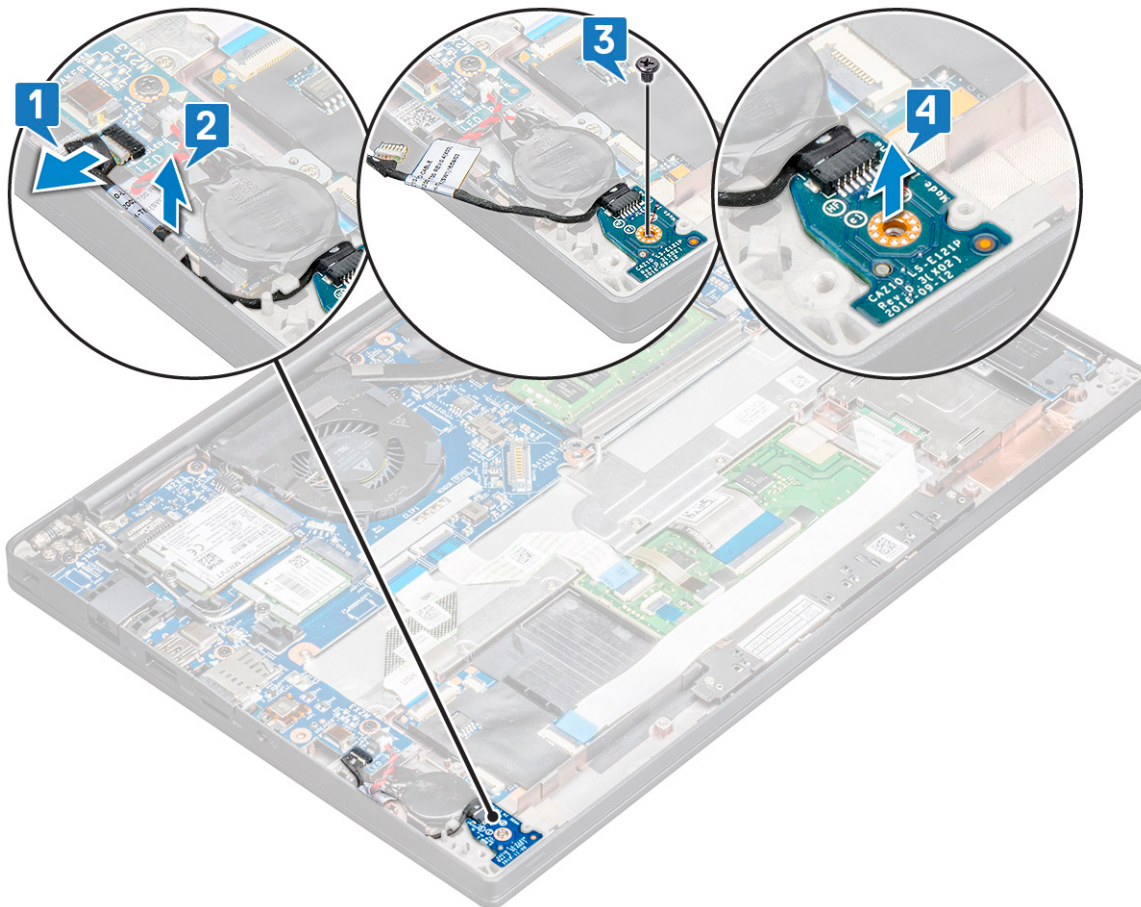
Installing power connector port

- 1 Install the power connector port into the slot on the computer.
- 2 Place the metal bracket on the power connector port.
- 3 Tighten the M2.0x3.0 screw to secure the power connector port to the computer.
- 4 Connect the power connector port cable to the connector on the system board.
- 5 Install the :
 - a [battery](#)
 - b [base cover](#)
- 6 Follow the procedure in [After working inside your computer](#).

LED board

Removing LED board

- 1 Follow the procedure in [Before working inside your computer](#).
- 2 Remove the :
 - a [base cover](#)
 - b [battery](#)
- 3 To remove the LED board:
 - a Disconnect the LED cable from the system board [1].
 - ⚠ CAUTION: Avoid pulling the cable as it would result in breaking the cable connector. Instead, use a scribe to release the LED cable from its connector.**
 - b Unroute the LED cable from the routing channel [2].
 - c Remove the M2 x 2.5 (1) screw that secures the LED board to the computer [3]
 - d Lift the LED board from the computer [4].



Installing LED board


- 1 Insert the LED board into the slot on the computer.
- 2 Tighten the M2 x 2.5 screw (1) to secure the LED board.
- 3 Connect the LED cable to the system board.


- 4 Install the :
 - a [battery](#)
 - b [base cover](#)
- 5 Follow the procedure in [After working inside your computer](#).

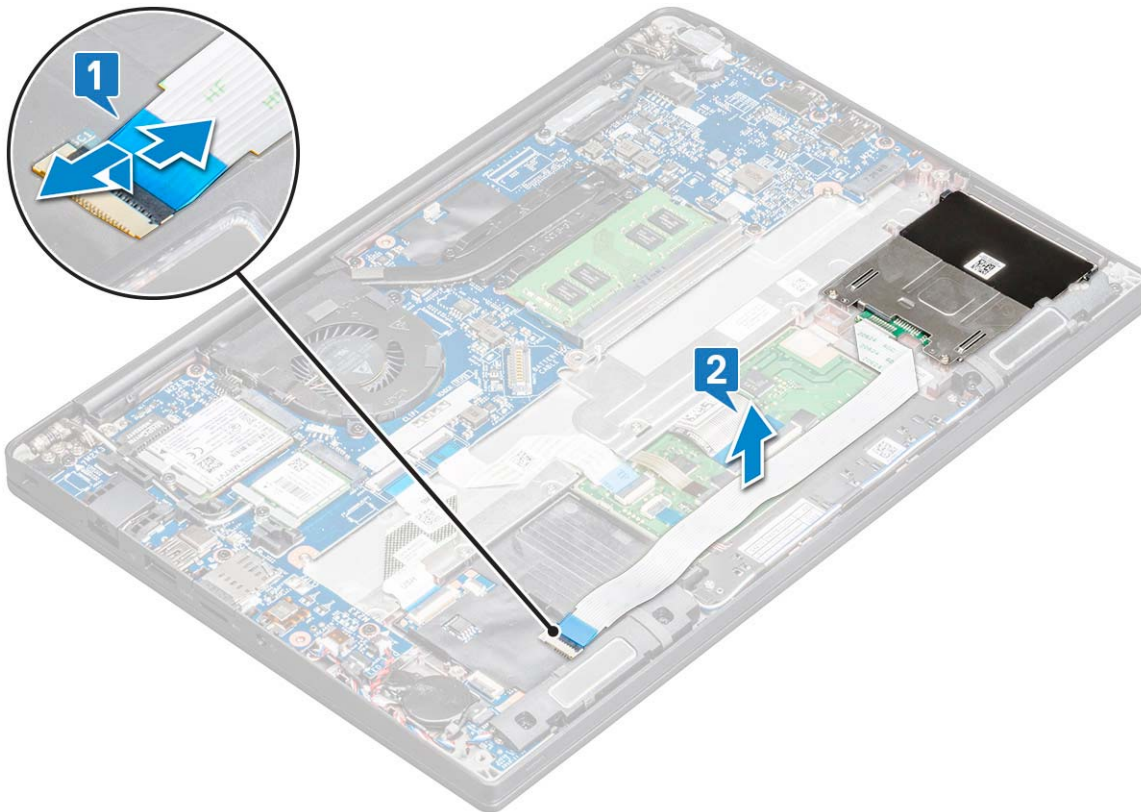
Smart card module

Removing smart card cage


- 1 Follow the procedure in [Before working inside your computer](#).
- 2 Remove the:
 - a [base cover](#)
 - b [battery](#)
 - c [PCIe SSD card](#)
 - d [SATA SSD](#)
- 3 To disconnect the smart card cable:
 - a Disconnect the smart card cable [1].

 **NOTE:** Ensure to gently push the connector, to avoid damage to the smart card head.
 - b Lift the smart card cable that is affixed to the touchpad module [2].

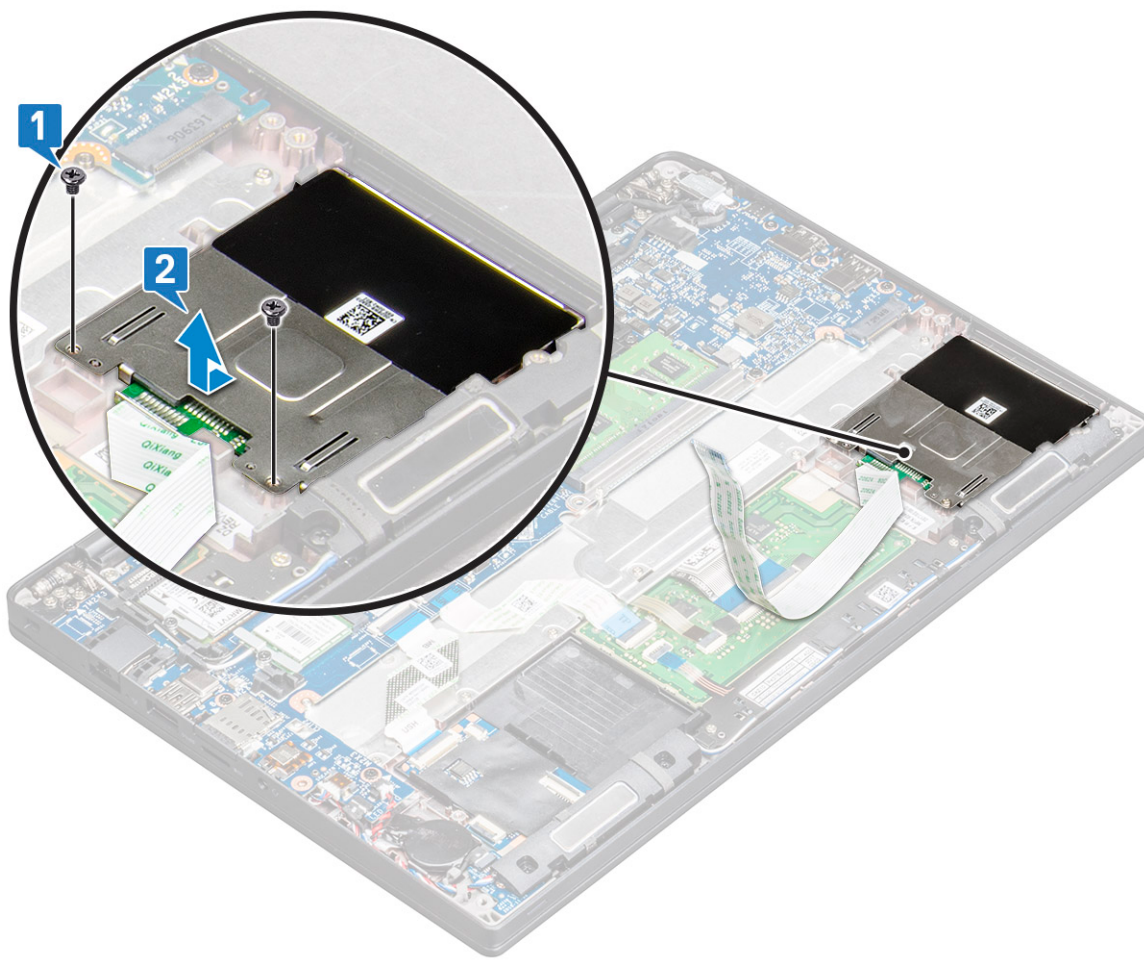
 **NOTE:** Ensure to pull gently to release it with adhesive tape.



- 4 To remove the smart card cage:

 **NOTE:** To identify the number of screws, see [screw list](#)

 - a Remove the M2 x 3 screws (2) that secure the smart card cage to the computer [1].
 - b Slide and lift the smart card cage from the computer [2].



Installing smart card cage

- 1 Slide the smart card cage into the slot to align with the tabs on the computer.
- 2 Tighten the M2 x 3 screws to secure the smart card cage to the computer.
- 3 Affix the smart card cable and connect it to the connector on the computer .
- 4 Install the:
 - a [SATA SSD](#)
 - b [PCIe SSD card](#)
 - c [battery](#)
 - d [base cover](#)
- 5 Follow the procedure in [After working inside your computer](#).

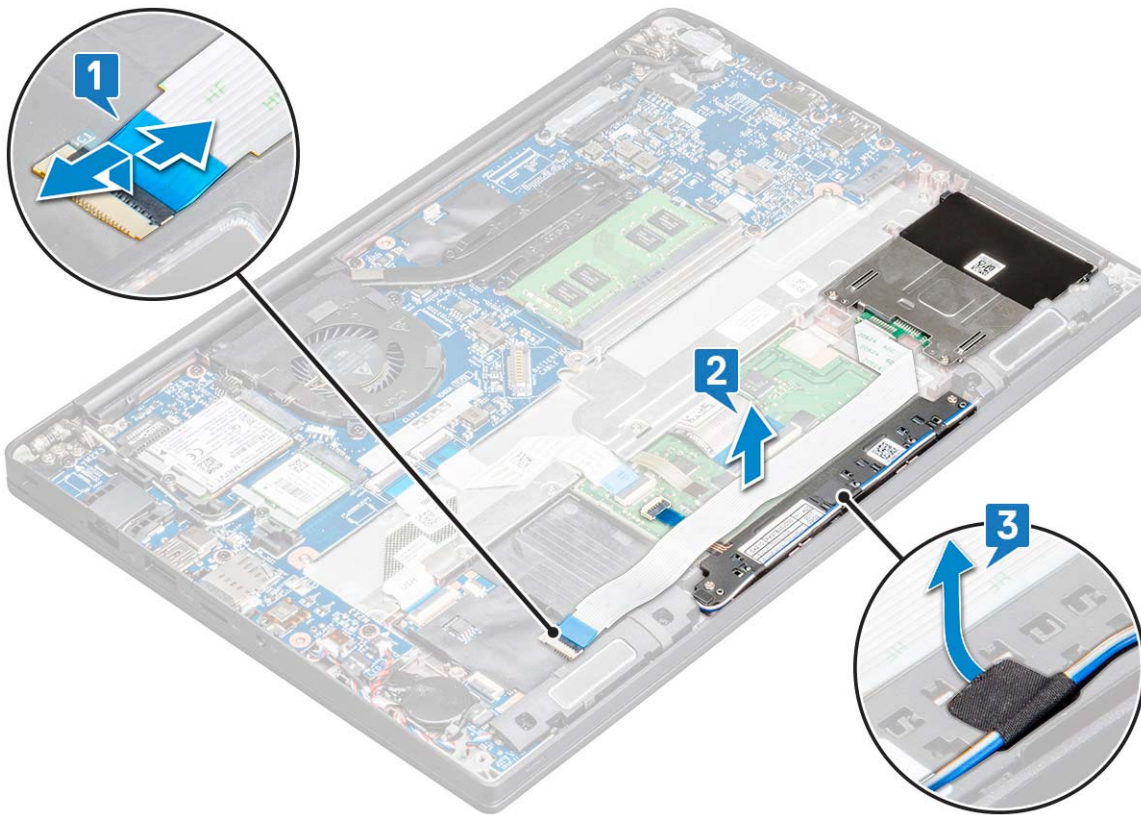
Touchpad buttons board

Removing touchpad buttons board

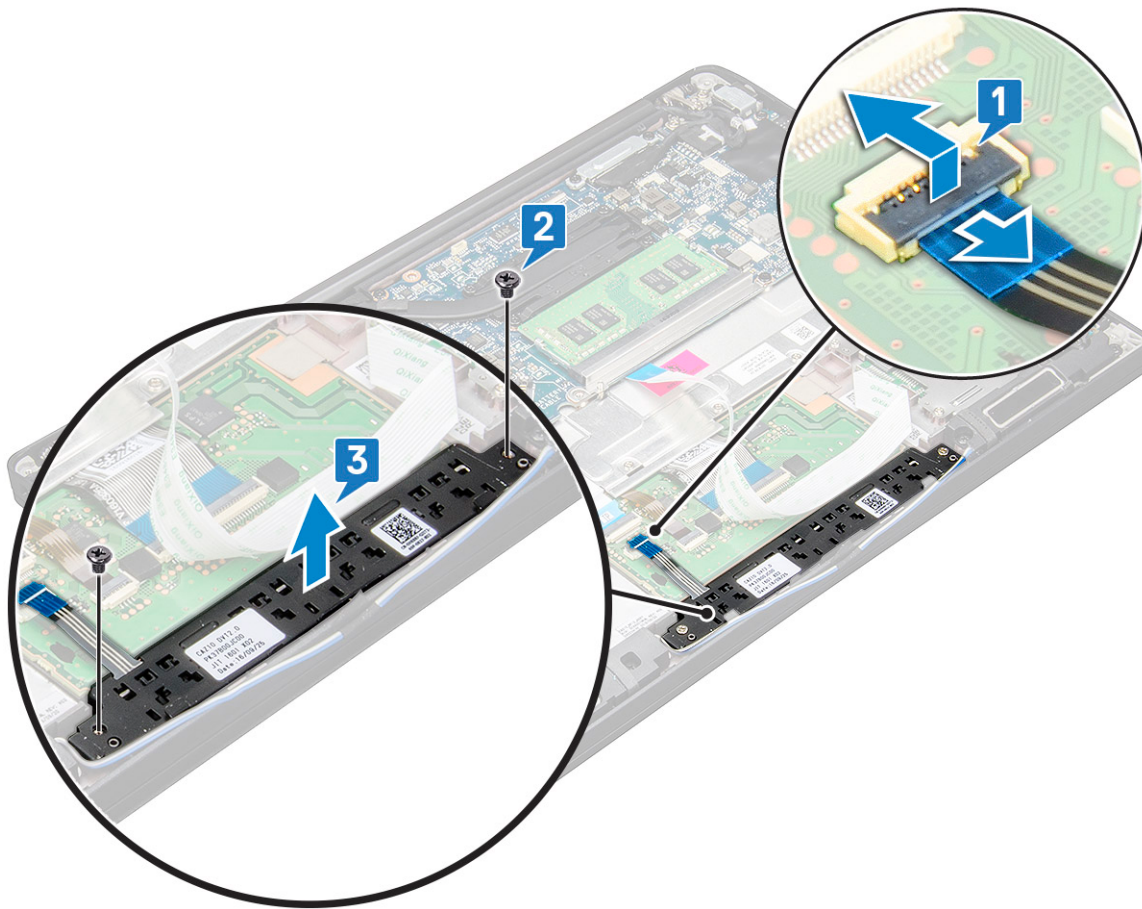
- 1 Follow the procedure in [Before working inside your computer](#).
- 2 Remove the:
 - a [base cover](#)
 - b [battery](#)

- 3 To disconnect the smart card cable:
 - a Disconnect the smart card cable [1].
 - b Lift the smart card cable that is affixed to the computer [2] to reveal the touchpad buttons board cable.
 - c Remove the adhesive tape that secures the speaker cable to the touchpad panel [3].

NOTE: Un-route the speaker cable from the routing clips from the touchpad buttons.



- 4 To remove the touchpad buttons board:
 - a Disconnect the touchpad buttons board cable from the touchpad board [1].
 - NOTE:** The touchpad buttons board cable is below the smart card cable. Ensure to lift the latch, to release the touchpad button board cable.
 - b Remove M2.0 x 2.5 screws (2) that secure the touchpad buttons board [2].
 - c Lift the touchpad buttons board from the computer [3].



Installing touchpad buttons board

- 1 Insert the touchpad buttons board into the slot to align the tabs with the grooves on the computer.
- 2 Tighten the screws to secure the touchpad buttons board to the computer.
- 3 Connect the touchpad buttons board cable to the connector on the touchpad board.
- 4 Affix the smart card cable and connect it to the connector on the computer
- 5 Install the:
 - a [speaker](#)
 - b [battery](#)
 - c [base cover](#)
- 6 Follow the procedure in [After working inside your computer](#).

Display Assembly

Removing display assembly

- 1 Follow the procedure in [Before working inside your computer](#).
- 2 Remove the:
 - a [base cover](#)
 - b [battery](#)
 - c [WLAN card](#)

d WWAN card

NOTE: To identify the number of screws, see [screw list](#).

3 To remove the display assembly:

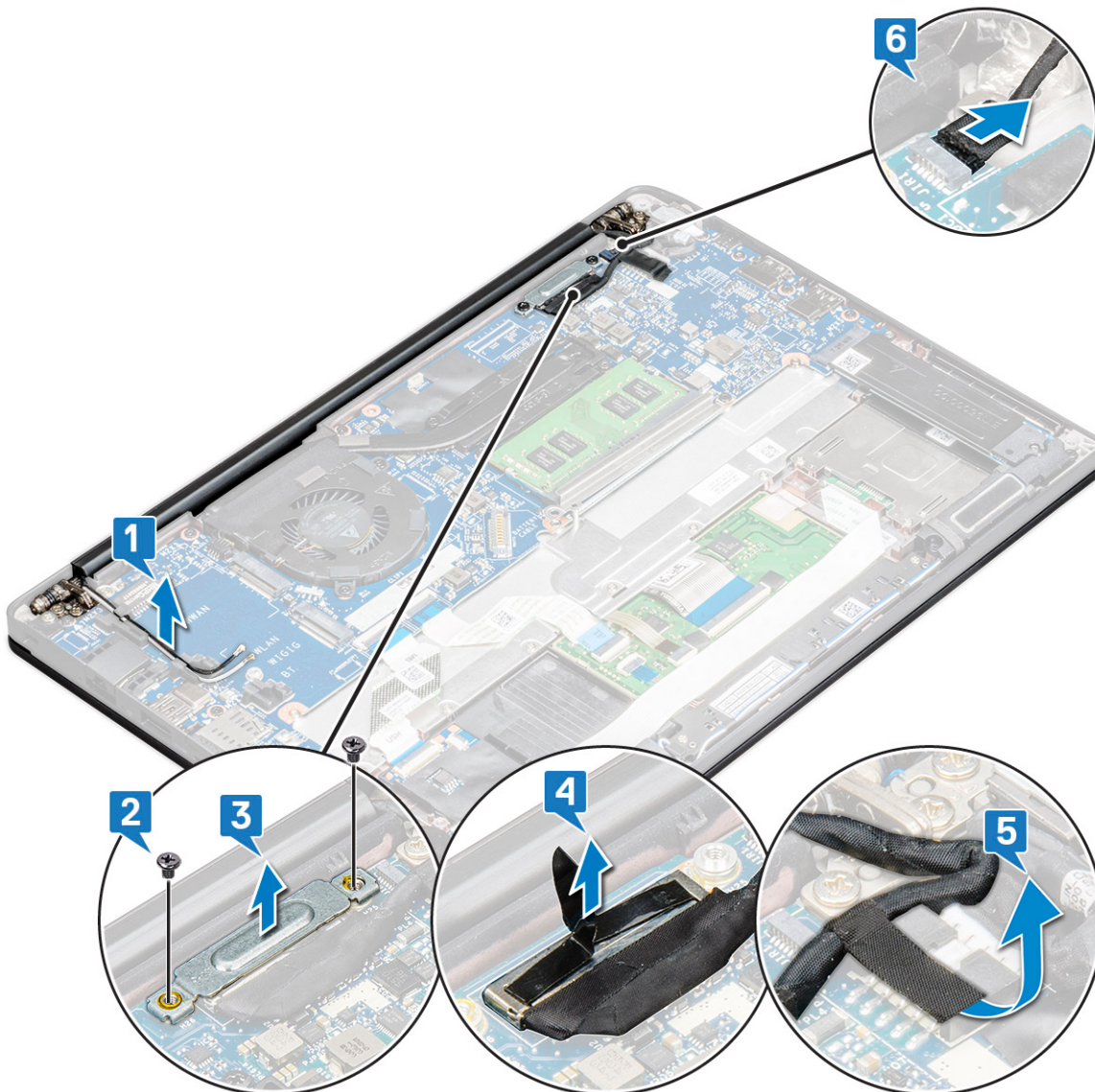
- a Unroute the WLAN and WWAN cables from the routing channels [1].
- b Remove the M2 x 3 screws that secure the eDP bracket [2].
- c Lift the eDP bracket from the eDP cable [3].
- d Disconnect the eDP cable from its connector on the system board [4].

NOTE: In touch-configuration system, ensure to remove the touch display cable that is connected to its connector on the system board.

e Remove the adhesive tape that secures the eDP cable [5].

NOTE: In touch-configuration system, you find both eDP cable and touch display cable that is secured with adhesive tape.

f Disconnect the cable from its connector on the system board [6].



4 To remove the display assembly:

- a Open the display of the computer, and lay it on a flat surface at 180 degree angle.
- b Remove the M2 x 3.5 screws (6) that secure the display hinge to the display assembly [1].
- c Lift the display assembly from the computer [2].