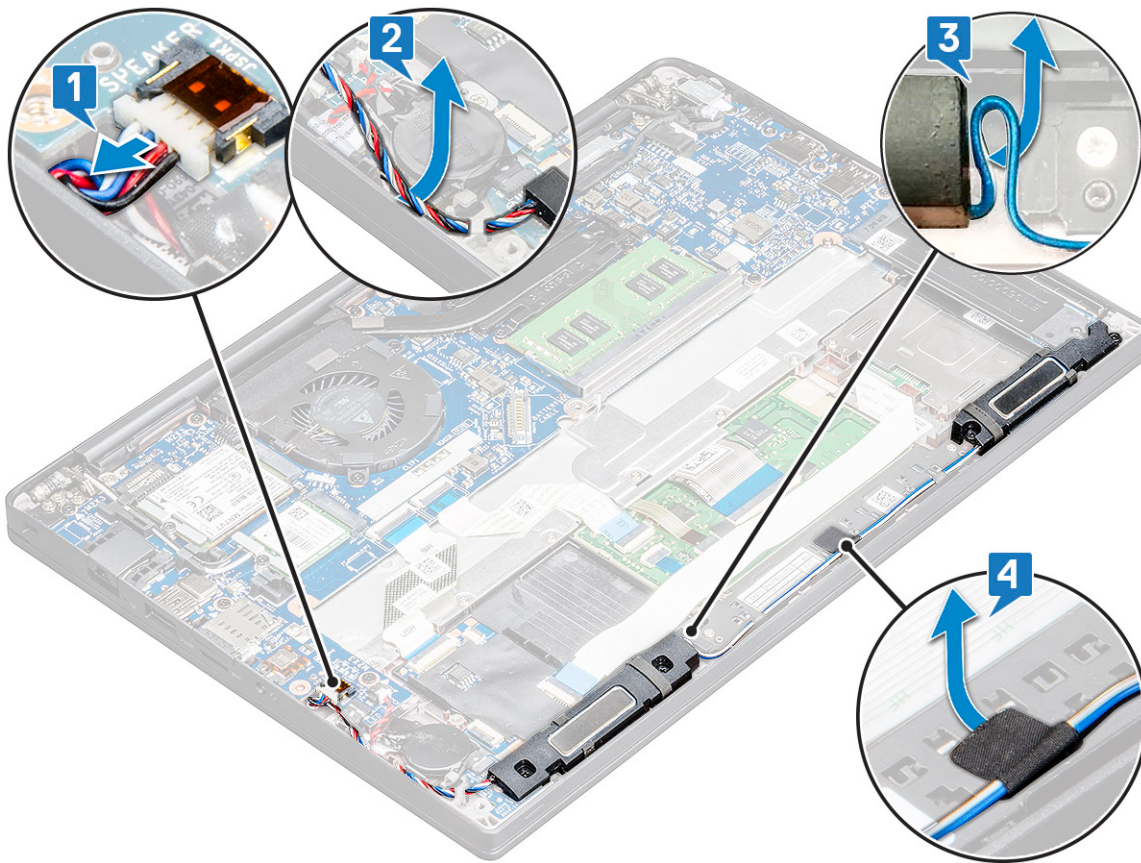


Speaker

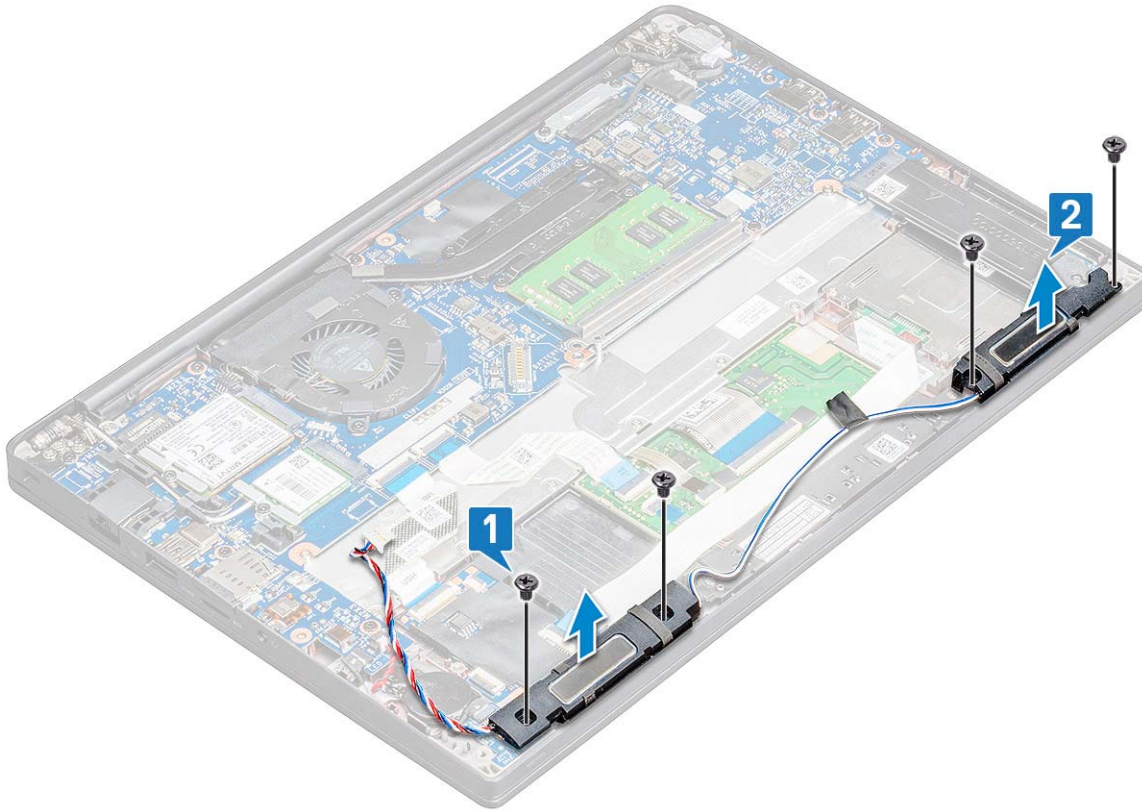
Removing speaker module

- 1 Follow the procedure in [Before working inside your computer](#).
- 2 Remove the:
 - a [base cover](#)
 - b [battery](#)
- 3 To release the speaker module:
 - a Push to disconnect the speaker cable from the connector on the system board [1].
① | NOTE: Ensure to unroute the speaker cable from the routing clip.
 - b **① | NOTE: Use a plastic scribe to release the cable from the connector. Do not pull the cable as it may result in breakage.**
 - b Un-route the speaker cable from the routing clips [2].
 - c Remove the tape that secures the speaker cables to the touchpad board [3].



- 4 To remove the speaker module:
 - a Remove the M2.0x3.0 screws (4) that secure the speaker module to the computer [1].
 - b Lift the speaker module from the computer [2].

① | NOTE: Ensure to un-route the speaker cable from the routing clips.



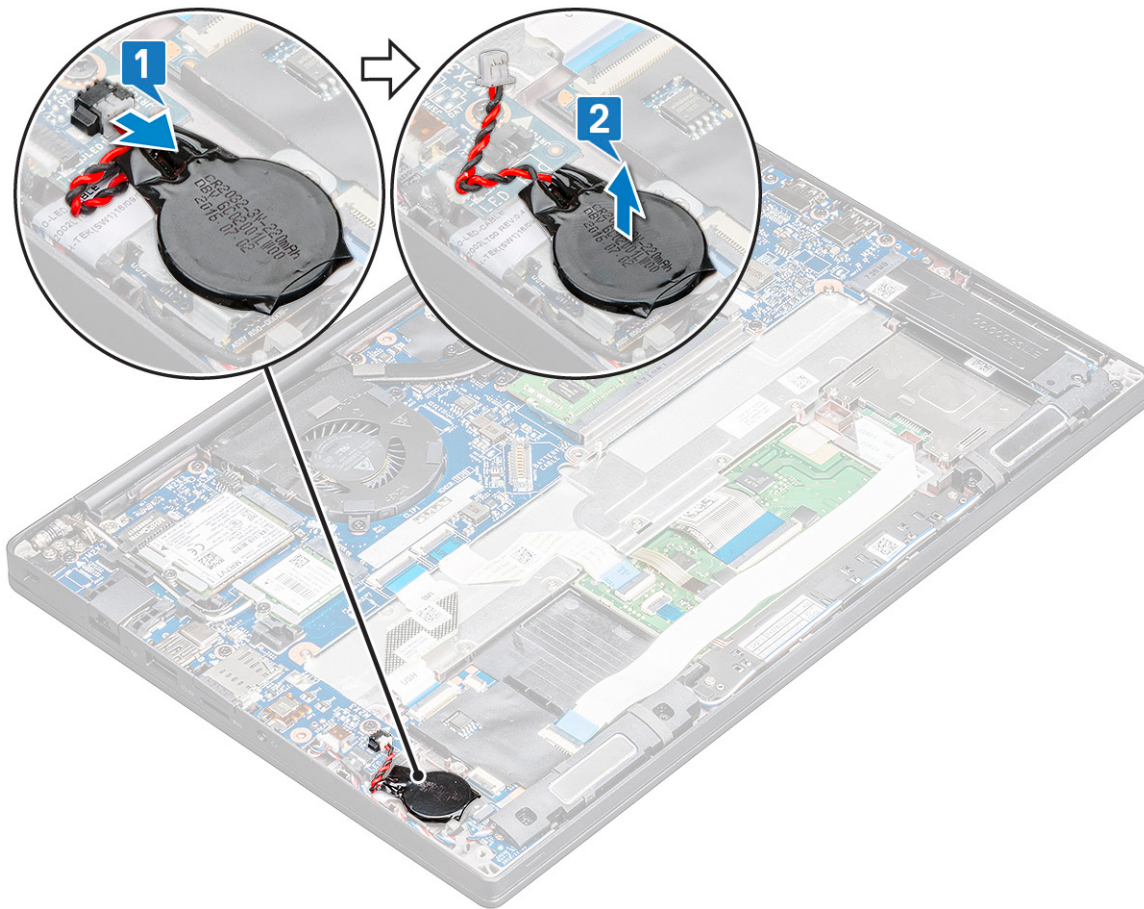
Installing speaker module

- 1 Place the speaker module into the slots on the computer.
- 2 Route the speaker cable through the retention clips on the computer.
- 3 Connect the speaker cable to the connector on the system board.
- 4 Install the:
 - a [battery](#)
 - b [base cover](#)
- 5 Follow the procedure in [After working inside your computer](#).

Coin cell battery

Removing the coin cell battery

- 1 Follow the procedure in [Before working inside your computer](#).
- 2 Remove the :
 - a [base cover](#)
 - b [battery](#)
- 3 To remove the coin cell battery:
 - a Disconnect the coin cell battery cable from the connector on the system board [1].
 - b Lift the coin cell battery to release it from the adhesive [2].



Installing coin cell battery

- 1 Affix the coin cell battery on the slot inside the computer.
- 2 Route the coin cell battery cable through the routing channel before connecting the cable.
- 3 Connect the coin cell battery cable to the connector on the system board.
- 4 Install the :
 - a battery
 - b base cover
- 5 Follow the procedure in [After working inside your computer](#).

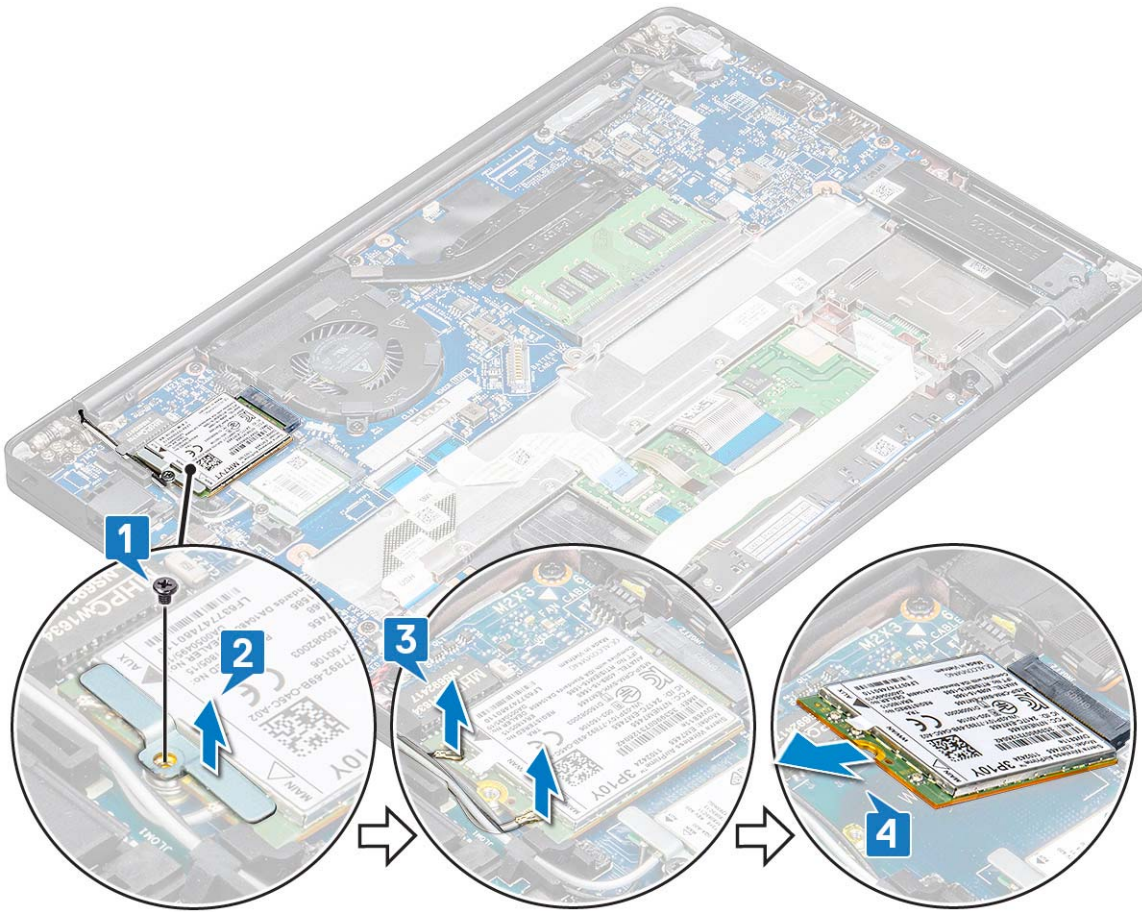
WWAN card

Removing WWAN card

- 1 Follow the procedure in [Before working inside your computer](#).
- 2 Remove the :
 - a base cover
 - b battery
- 3 To remove the WWAN card:
 - a Remove the M2.0 x 3.0 screw that secures the metal bracket to the WWAN card [1].

 **NOTE:** The WWAN card pops out by an angle 15°.

- b Lift the metal bracket that secures the WWAN card [2].
- c Disconnect the WWAN cables from the connectors on the WWAN card with a plastic scribe.[3].
- ① **NOTE:** Ensure to press the WWAN card, and then release the cables from the connectors.
- d Slide and lift the WWAN card from the connector on the system board [4].Lift the WWAN card from the computer .
- ① **NOTE:** Ensure to lift the WWAN card by an angle NOT more than 35°.



Installing WWAN card

- 1 Insert the WWAN card into the connector on the system board.
- 2 Connect the WWAN cables to the connectors on the WWAN card.
- 3 Place the metal bracket and tighten the M2.0 x 3.0 screw to secure it to the computer.
- 4 Install the :
 - a battery
 - b base cover
- 5 Follow the procedure in [After working inside your computer](#).

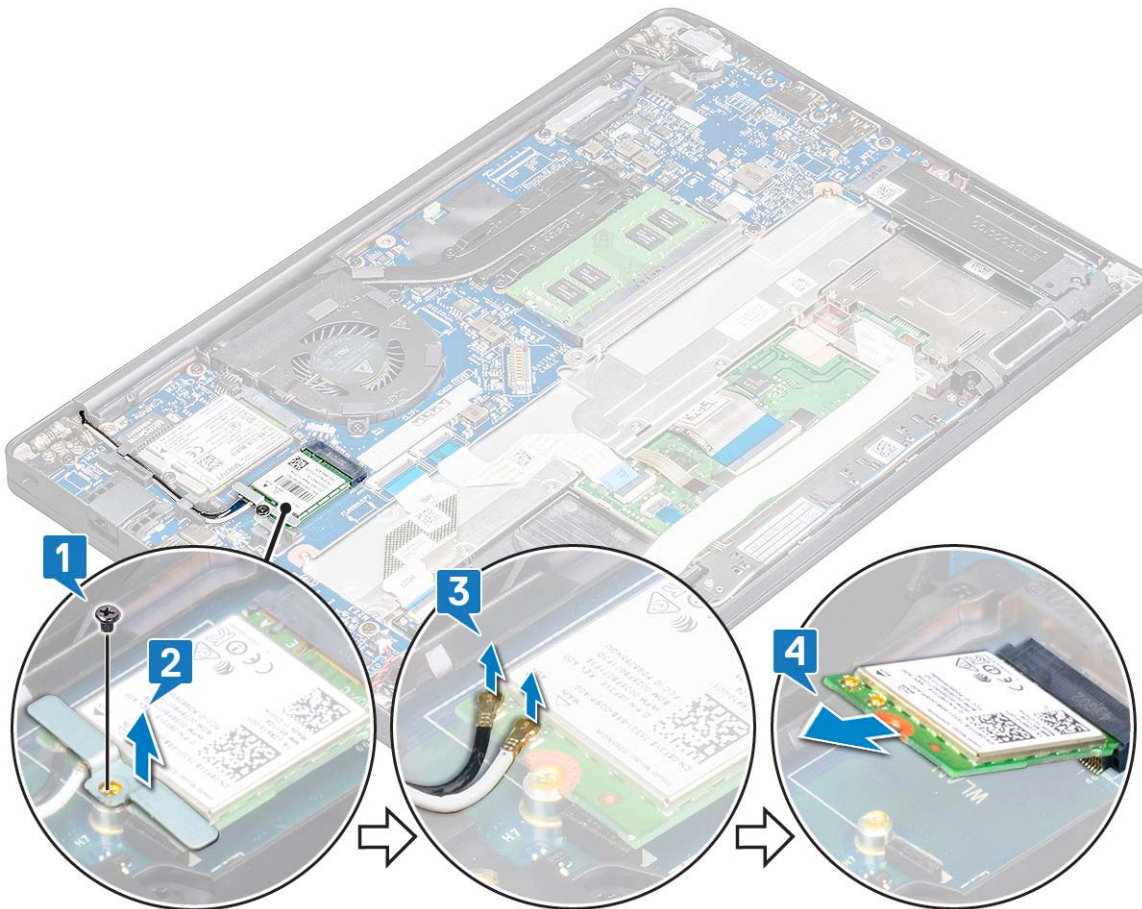
① **NOTE:** The IMEI number can also be found on the WWAN card.

WLAN card

Removing WLAN card

- 1 Follow the procedure in [Before working inside your computer](#).
- 2 Remove the :
 - a [base cover](#)
 - b [battery](#)
- 3 To remove the WLAN card:
 - a Remove the M2.0 x 3.0 screw that secures the metal bracket to the WLAN card [1].
 - b Lift the metal bracket [2].
 - c Disconnect the WLAN cables from the connectors on the WLAN card [3].
 - d Remove the WLAN card from the computer [4].

ⓘ **NOTE:** Ensure NOT to pull the WLAN card more than 35°, to avoid damage to pin.



Installing WLAN card

- 1 Insert the WLAN card into the connector on the system board.
- 2 Connect the WLAN cables to the connectors on the WLAN card.
- 3 Place the metal bracket and tighten the M2.0 x 3.0 screw to secure it to the computer.

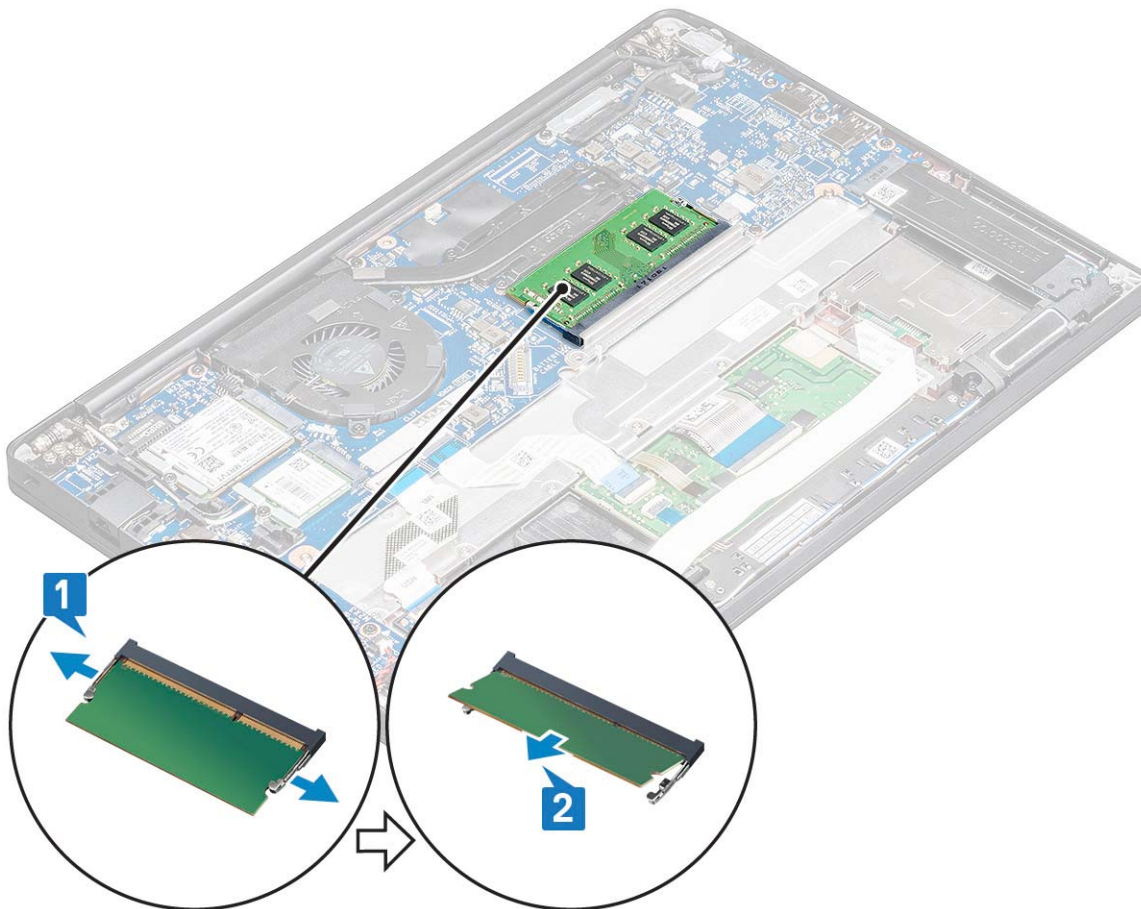
- 4 Install the :
 - a [battery](#)
 - b [base cover](#)
- 5 Follow the procedure in [After working inside your computer](#).

Memory modules

Removing memory module

- 1 Follow the procedure in [Before working inside your computer](#).
- 2 Remove the :
 - a [base cover](#)
 - b [battery](#)
- 3 To remove the memory module:
 - a Pull the clips securing the memory module until the module snaps-out [1].
 - b Remove the memory module from the connector on the system board [2].

 **NOTE:** Ensure to lift the memory module card by an angle NOT more than 35°.



Installing memory module

- 1 Insert the memory module into the connector until snaps in.
- 2 Install the :
 - a [battery](#)
 - b [base cover](#)
- 3 Follow the procedures in [After working inside your computer](#).

Heat sink

Removing heat sink assembly

Heat sink assembly comprises of heat sink and the system fan.

- 1 Follow the procedure in [Before working inside your computer](#).
- 2 Remove the :
 - a [base cover](#)
 - b [battery](#)
- 3 To remove the heat sink assembly:

 **NOTE:** To identify the number of screws, see [screw list](#)

- a Remove the M2 x 5 screws (6) that secure the heat sink assembly to the system board [2].

 **NOTE:** Remove the screws in order of the callout numbers [1, 2, 3, 4] as printed on the heat sink assembly.

- b Lift the heat sink assembly from the system board [3].
- c Disconnect the fan cable from the system board [1]