

**FCC ID: PP9P2000MOBITEX**

## Exhibit 11

**RF Exposure Information  
SAR Report**



## Certification Report on

Specific Absorption Rate (SAR)  
Experimental Analysis

Descartes Corp.

Point of Sale Terminal  
P2000

Test Date: July 2001



DESB-P2000 W. 902M Mobitex-3682

51 Spectrum Way Nepean ON K2R 1E6  
Tel: (613) 820-2730 Fax: (613) 820-4161  
email: [info@aprel.com](mailto:info@aprel.com)

Subject: **Specific Absorption Rate (SAR) Experimental Assessment**

Product: Point of Sale Device with a  
RIM 902M Mobitex Modem

Model: P2000

Client: Descartes Corp.

Address: Colonial Lake Drive  
Lawrenceville, NJ 08648  
USA



Project #: DESB-P2000 W. 902M Mobitex-3682

Prepared by APREL Laboratories  
51 Spectrum Way  
Nepean, Ontario  
K2R 1E6

Approved by

Date:

July 31, 2001

Stuart Nicol  
Director Product Development, Dosimetric R&D

Submitted by

Date:

July 31, 2001

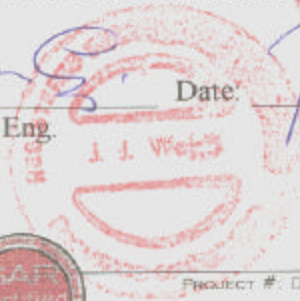
Jay Sarkar  
Technical Director of Standards & Certification

Released by

Date:

July 31/01

Dr. Jacek J. Wojcik, P. Eng.



FCC ID: PP9P2000MOBITEX  
 Applicant: Descartes Corp.  
 Equipment: Point of Sale Device with a RIM 902M Mobitex Modem  
 Model: P2000  
 Standard: FCC 96 –326, Guidelines for Evaluating the Environmental Effects of Radio-Frequency Radiation

## ENGINEERING SUMMARY

This report contains the results of the engineering evaluation performed on a P2000 POS Terminal which incorporates a RIM 902M Mobitex modem. The measurements were carried out in accordance with FCC 96-326. The P2000 POS Terminal was evaluated for its maximum power level 0.363W (ERP). The radio modem was tested at a duty cycle of 25%. The duty cycle can not be changed by the end user.

The P2000 POS Terminal was tested at low, middle, and high channels for the keyboard up, keyboard down, left, and right sides. The maximum 10g SAR (1.23 W/kg) was found to coincide with the peak performance RF output power of channel 0720 (899MHz) for the left side of the device with the antenna 4.5 mm away from the phantom. (The hot spot is located on the antenna). Test data and graphs are presented in this report.

At a separation distance of 4 cm from the antenna of the device, the maximum 1g SAR is 0.02 W/kg. The manual will have a warning to keep bystanders, and parts of the user's body other than extremities, at least 4 cm away from the antenna.

Based on the test results and on how the device will be marketed and used, it is certified that the product meets the requirements as set forth in the above specifications, for RF exposure environment.

(The results presented in this report relate only to the sample tested.)



## TABLE OF CONTENTS

1.	Introduction .....	4
2.	Applicable Documents .....	4
3.	Device Under Investigation.....	4
4.	Test Equipment .....	5
5.	Test Methodology .....	5
6.	Test Results .....	6
6.1.	Transmitter Characteristics.....	6
6.2.	SAR Measurements .....	7
7.	User's Hand Exposure .....	8
8.	Bystander Exposure .....	9
9.	Conclusions .....	11
	APPENDIX A. Measurement Setup, Tissue Properties and SAR Graphs .....	12
	APPENDIX B. Uncertainty Budget .....	14
	APPENDIX C. Validation Scan on a Flat Phantom.....	15
	APPENDIX D. Probe Calibration .....	17

## TABLES AND FIGURES

Table 1.	Sampled RF Power.....	6
Table 2.	SAR Measurements .....	8
Table 3.	SAR versus DUI-Phantom Separation .....	10
Figure 1.	Setup      Figure 2. Setup Closeup.....	12
Table 4.	Dielectric Properties of the Simulated Muscle Tissue at 899 MHz.....	12
Figure 3.	Contour Plot of the Area Scan 2.5mm Above Phantom Surface.....	13
Figure 4.	Surface Plot of the Area Scan 2.5mm Above Phantom Surface.....	13
Table 5.	Uncertainty Budget .....	14
Figure 5.	Contour Plot of the Reference Area Scan 2.5mm Above Phantom .....	15
Figure 6.	Surface Plot of the Reference Area Scan 2.5mm Above Phantom .....	15
Figure 7.	Peak Local SAR versus Separation (1 gram SAR).....	16



## 1. INTRODUCTION

Tests were conducted to determine the Specific Absorption Rate (SAR) for a sample P2000 POS Terminal. These tests were conducted at APREL Laboratories' facility located at 51 Spectrum Way, Nepean, Ontario, Canada. A view of the SAR measurement setup can be seen in Appendix A Figures 1&2. This report describes the results obtained.

## 2. APPLICABLE DOCUMENTS

The following documents are applicable to the work performed:

- 1) FCC 96-326, Guidelines for Evaluating the Environmental Effects of Radio-Frequency Radiation
- 2) ANSI/IEEE C95.1-1999, IEEE Standard for Safety Levels with Respect to Human Exposure to Radio Frequency Electromagnetic Fields, 3 kHz to 300 GHz.
- 3) ANSI/IEEE C95.3-1992, IEEE Recommended Practice for the Measurement of Potentially Hazardous Electromagnetic Fields – RF and Microwave.
- 4) OET Bulletin 65 (Edition 97-01) Supplement C (Edition 97-01), "Evaluating Compliance with FCC Guidelines for Human Exposure to Radio Frequency Electromagnetic Fields".

## 3. DEVICE UNDER INVESTIGATION

- P2000 POS Terminal, s/n 010108100202, received on Mar 29, 2001.

The P2000 POS Terminal will be called DUI (Device Under Investigation) in the following report.

For further technical/design details see the manufacturer's submission documentation.



#### 4. TEST EQUIPMENT

- APREL Triangular Dosimetric Probe Model E-009, s/n 115, Asset # 301420
- CRS Robotics A255 articulated robot arm, s/n RA2750, Asset # 301335
- CRS Robotics C500 robotic system controller, s/n RC584, Asset # 301334
- HP 83201A dual mode cellular adapter, Asset # 301290
- HP 8920A 0.4-1000 MHz RF communications test set, Asset # 301290
- Wireless Test Tool software supplied by the modem manufacturer, Research In Motion LTD.
- Tissue Recipe and Calibration Requirements, APREL procedure SSI/DRB-TP-D01-033

#### 5. TEST METHODOLOGY

1. The test methodology utilised in the certification of the DUI complies with the requirements of FCC 96-326 and ANSI/IEEE C95.3-1992.
2. The E-field is measured with a small isotropic probe (output voltage proportional to  $E^2$ ).
3. The probe is moved precisely from one point to the next using the robot (10 mm increments for wide area scanning, 5 mm increments for zoom scanning, and 2.5 mm increments for the final depth profile measurement).
4. The probe travels in the homogeneous liquid simulating human tissue. Appendix A contains information about the properties of the simulated tissue used for these measurements.
5. The liquid is contained in a manikin simulating a portion of the human body with an overall shell thickness of 3 mm.





6. The DUI is positioned with the surface under investigation against the phantom.
7. All tests were performed with the highest power available from the sample DUI under transmit conditions.

More detailed descriptions of the test method is given in Section 6 where appropriate.

## 6. TEST RESULTS

### 6.1. TRANSMITTER CHARACTERISTICS

The battery-powered DUI will consume energy from its batteries, which may affect the DUI's transmission characteristics. In order to gage this effect the output of the transmitter is sampled before and after each SAR run. In the case of this DUI, the radiated power was sampled. The following table shows the radiated RF power sampled before and after each of the seven sets of data used for the worst case SAR in this report.

Scan		Power Readings (dBm)		D (dB)	Battery #
Type	Height (mm)	Before	After		
Area	2.5	1.50	1.23	0.27	1
Zoom	2.5	1.75	1.50	0.25	4
Zoom	7.5	1.29	0.85	0.44	2
Zoom	12.5	0.66	0.55	0.11	1
Zoom	17.5	1.11	0.67	0.44	3
Zoom	22.5	0.42	0.65	0.23	4
Depth	2.5 – 22.5	1.3	0.97	0.33	2

**Table 1. Sampled RF Power**





## 6.2. SAR MEASUREMENTS

- 1) RF exposure is expressed as a Specific Absorption Rate (SAR). SAR is calculated from the E-field, measured in a grid of test points. SAR is expressed as RF power per kilogram of mass, averaged in 10 grams of tissue for the extremities and 1 gram of tissue elsewhere.
- 2) The DUI was put into test mode for the SAR measurements via communications software supplied by the manufacturer running on a PC to control the channel and operating power.
- 3) Figure 3 in Appendix A shows a contour plot of the SAR measurements for the DUI (channel 0720, middle, 899 MHz). It also shows an overlay of the DUI's outlines, superimposed onto the contour plot

A different presentation of the same data is shown in Appendix A Figure 4. This is a surface plot, where the measured SAR values provide the vertical dimension, which is useful as a visualisation aid.

- 4) Wide area scans were performed for the low, middle and high channels on the right side of the DUI. The DUI was operating at maximum output power 0.363 W(ERP) with a 25% duty cycle. The peak single point SAR for the scans were:



TYPE OF EXPOSURE	DUI side	Antenna Distance from Phantom (mm)	Channel			Peak Local SAR (W/kg)
			L/M/H	#	Freq (MHz)	
Hand & Bystander Exposure	Right side	4.5	middle	0720	899	2.22
	Right side	4.5	low	0480	896	1.98
	Right side	4.5	high	0880	901	1.90
	Left side	80	middle	0720	899	0.11
	Keyboard up side	25	middle	0720	899	0.71
	Right side (DUI in cradle)	4.5	middle	0720	899	1.38
	Keyboard down side	55	middle	0720	899	0.04

**Table 2. SAR Measurements**

## 7. USER'S HAND EXPOSURE

All subsequent testing for user's hand exposure was performed on channel 0720 (899MHz), with the right side of the DUI facing up against the bottom of the phantom and the antenna 4.5 mm away from the bottom of the phantom. This relates to the position and frequency found to provide the maximum measured SAR value.

- 1) Channel 0720 (899MHz) was then explored on a refined 5 mm grid in three dimensions. The SAR value averaged over 10 grams was determined from these measurements by averaging the 125 points (5x5x5) comprising a 2 cm cube. The maximum SAR value measured averaged over 10 grams was determined from these measurements to be 0.79 W/kg.
- 2) To extrapolate the maximum SAR value averaged over 10 grams to the inner surface of the phantom a series of measurements were made at five (x,y) co-ordinates within the refined grid as a function of depth, with 2.5 mm spacing. The average exponential coefficient was determined to be  $(-0.092 \pm 0.003)$  mm.



- 3) The distance from the probe tip to the inner surface of the phantom for the lowest point is 2.5 mm. The distance from the probe tip to the tip of the measuring dipole within the APREL Triangular Dosimetric Probe Model E-009 is 2.3 mm. The total extrapolation distance is 4.8 mm, the sum of these two.

Applying the exponential coefficient over the 4.8 mm to the maximum SAR value averaged over 10 grams that was determined previously, we obtain the **maximum SAR value at the surface averaged over 10 grams, 1.23 W/kg.**

## 8. BYSTANDER EXPOSURE

All subsequent testing for bystander exposure was performed on channel 0720 (899MHz), with the right side of the DUI facing up against the bottom of the phantom and the antenna 4.5 mm away from the bottom of the phantom. This relates to the position and frequency found to provide the maximum measured SAR value.

- 1) Channel 0720 (899MHz) was also explored on a refined 5 mm grid in three dimensions. The SAR value averaged over 1 gram was determined from these measurements by averaging the 27 points (3x3x3) comprising a 1 cm cube. The maximum SAR value measured averaged over 1 gram was determined from these measurements to be 1.27 W/kg.
- 2) To extrapolate the maximum SAR value averaged over 1 gram to the inner surface of the phantom a series of measurements were made at five (x,y) coordinates within the refined grid as a function of depth, with 2.5 mm spacing. The average exponential coefficient was determined to be  $(-0.092 \pm 0.003)$  mm.
- 3) The distance from the probe tip to the inner surface of the phantom for the lowest point is 2.5 mm. The distance from the probe tip to the tip of the measuring dipole within the APREL Triangular Dosimetric Probe Model E-009 is 2.3 mm. The total extrapolation distance is 4.8 mm, the sum of these two.

Applying the exponential coefficient over the 4.8 mm to the maximum SAR value averaged over 1 gram that was determined previously, we obtain the **maximum SAR value at the surface averaged over 1 gram, 1.97 W/kg.**



- 4) Wide area scans were then performed for channel 0720 (899MHz) versus DUI separation from the bottom of the phantom. The peak single point SAR for the scans were:

DUI to phantom separation (mm)	Highest Local SAR (W/kg)
10	0.44
20	0.13
30	0.06

**Table 3. SAR versus DUI-Phantom Separation**

The measurements of highest local SAR versus separation of the DUI from the bottom of the phantom can be used to determine the SAR exposure of the bystander during operation of the DUI.

If the data for Figure 4 is fitted to an exponential equation we get:

$$\text{Peak Local SAR} = 2.993 e^{-0.1261 * (\text{separation})}$$

A similar equation will exist for the maximum 1g SAR versus separation:

$$\text{Maximum 1g SAR} = k e^{-0.1261 * (\text{separation})}$$

Using this equation with the previous data:

$$\begin{aligned} \text{Maximum 1g SAR at the surface} &= 1.97 \text{ W/kg} \\ \text{Tissue to DUI separation} &= 3 \text{ mm,} \end{aligned}$$

results in a  $k = 2.88 \text{ W/kg}$ , which corresponds to the maximum 1g SAR when the separation is 0 mm. A conservative maximum 1g SAR of 1.38 W/kg (1.6 W/kg reduced by our measurement uncertainty, 14 %) would occur for a separation of 5.8 mm from the antenna of the DUI.

At a standard separation distance of 4 cm, the maximum 1g SAR would be 0.02 W/kg.



## 9. CONCLUSIONS

The maximum Specific Absorption Rate (SAR) averaged over 10 grams, determined at 899 MHz ( channel 0720) of the P2000 POS, is **1.23 W/kg**. The overall margin of uncertainty for this measurement is  $\pm 14\%$  (Appendix B). The SAR limit given in the FCC 96-326 Safety Guideline is 4 W/kg for hand exposure for the general population.

For a bystander or user exposing a part of the body other than the extremities, at a separation distance of 4 cm from the device, the maximum Specific Absorption Rate (SAR) averaged over 1 g is **0.02 W/kg**. The SAR limit given in the FCC 96-326 Safety Guideline is 1.6 W/kg for uncontrolled partial body exposure of the general population. The minimum separation distance that will ensure that the limit minus the measurement uncertainty ( $1.6 - 14\% = 1.38$  W/kg) is not exceeded, is 5.8 mm.

Considering the above, this unit as tested, and as it will be marketed and used, is found to be compliant with the FCC 96-326 requirement.

Tested by

*[Signature]*

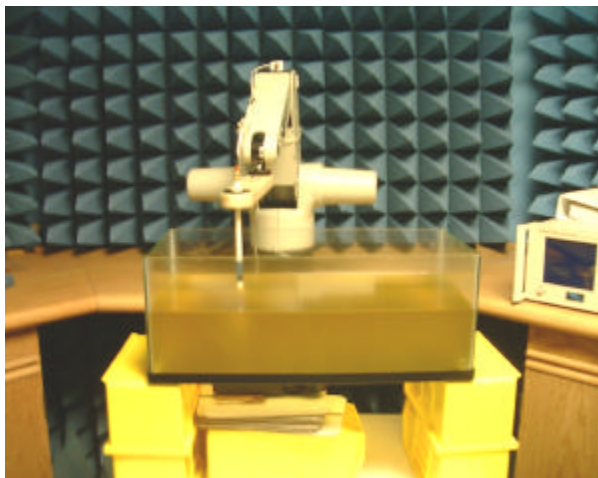
Date

*APRIL 18, 2001*

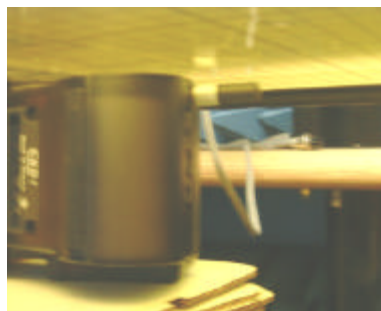




## APPENDIX A. Measurement Setup, Tissue Properties and SAR Graphs



**Figure 1. Setup**



**Figure 2. Setup Closeup**

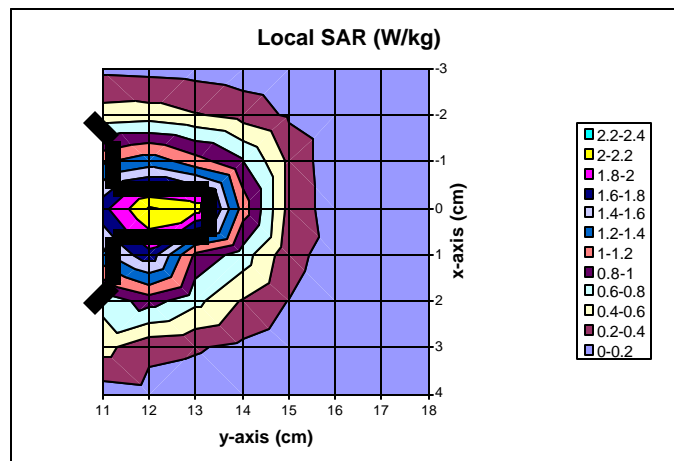
### Simulated Tissue Material and Calibration Technique

The mixture used was based on that presented in SSI/DRB-TP-D01-033, “Tissue Recipe and Calibration Requirements”. The density used to determine SAR from the measurements was the recommended  $1040 \text{ kg/m}^3$  found in Appendix C of Supplement C to OET Bulletin 65, Edition 97-01).

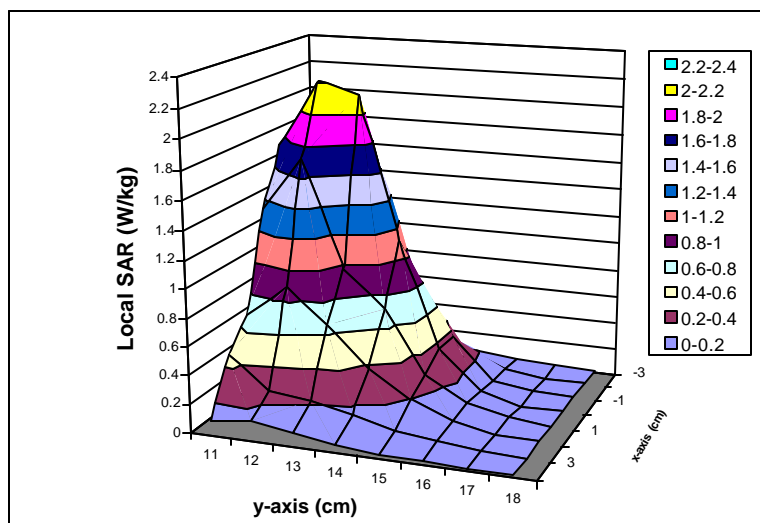
Dielectric parameters of the simulated tissue material were determined using a Hewlett Packard 8510 Network Analyser, a Hewlett Packard 809B Slotted Line Carriage, and an APREL SLP-001 Slotted Line Probe.

	APREL	Target Value	$\Delta$ (%)
Dielectric constant, $\epsilon_r$	52.7	55.96	-5.8 %
Conductivity, $\sigma$ [S/m]	1.07	0.97	10.0 %
Tissue Conversion Factor, $\gamma$	9.6	-	-

**Table 4. Dielectric Properties of the Simulated Muscle Tissue at 899 MHz**



**Figure 3. Contour Plot of the Area Scan 2.5mm Above Phantom Surface**



**Figure 4. Surface Plot of the Area Scan 2.5mm Above Phantom Surface**



## APPENDIX B. Uncertainty Budget

<b>Uncertainties Contributing to the Overall Uncertainty</b>		
<b>Type of Uncertainty</b>	<b>Specific to</b>	<b>Uncertainty</b>
Power variation due to battery condition	DUI	4.0%
Extrapolation due to curve fit of SAR vs depth	DUI & Setup	7.4%
Extrapolation due to depth measurement	setup	4.5%
Conductivity	setup	6.0%
Density	setup	2.6%
Tissue enhancement factor	setup	7.0%
Voltage measurement	setup	0.6%
Probe sensitivity factor	setup	3.5%
		<b>14.0%    RSS</b>

**Table 5. Uncertainty Budget**



## APPENDIX C. Validation Scan on a Flat Phantom

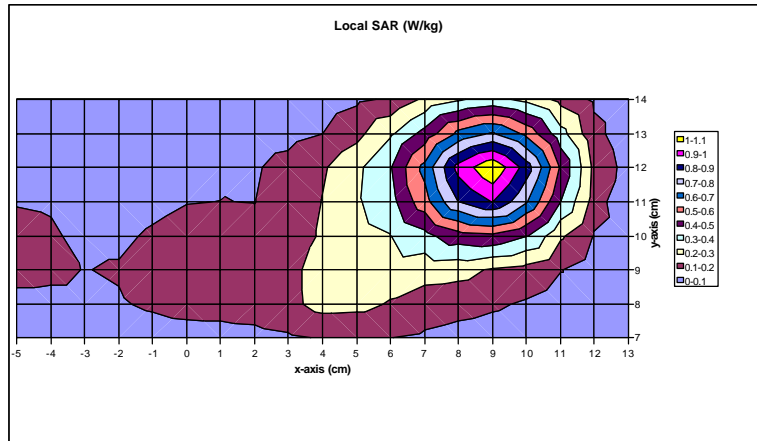


Figure 5. Contour Plot of the Reference Area Scan 2.5mm Above Phantom

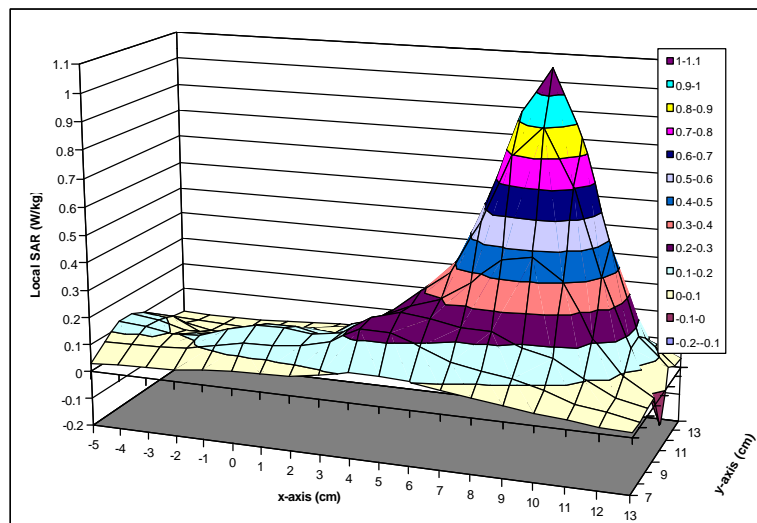
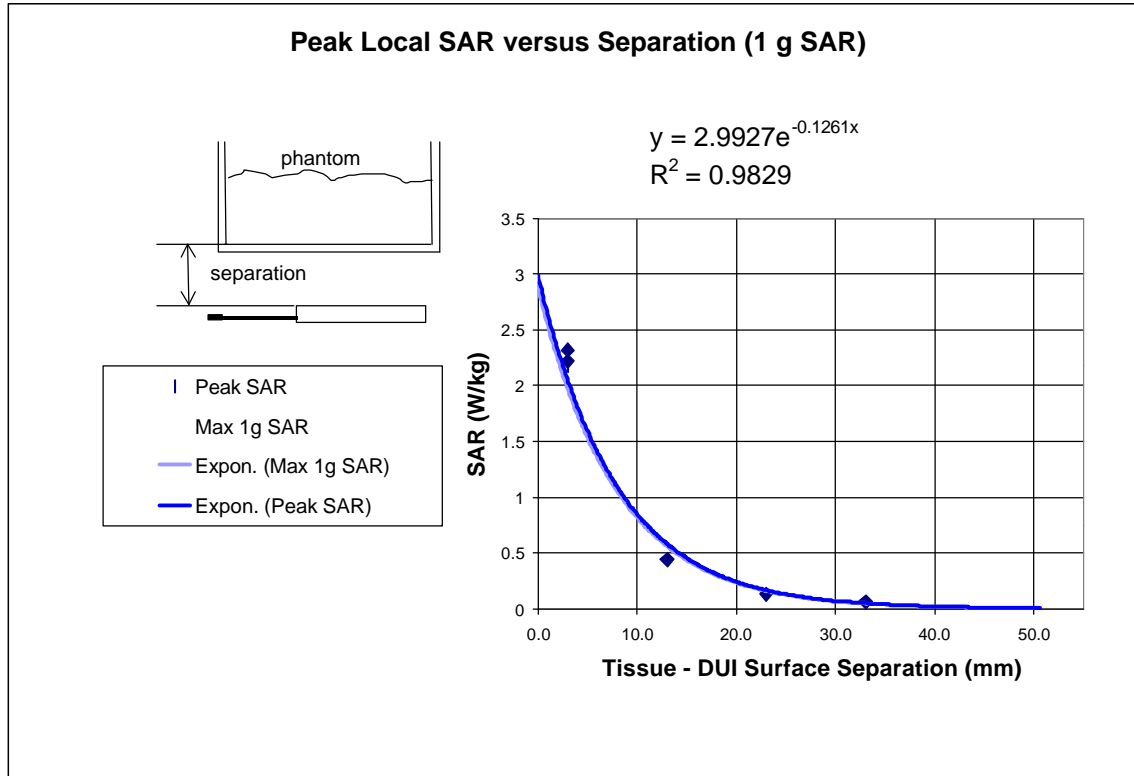


Figure 6. Surface Plot of the Reference Area Scan 2.5mm Above Phantom



**Figure 7. Peak Local SAR versus Separation (1 gram SAR)**

**APPENDIX D. Probe Calibration**

**NCL CALIBRATION LABORATORIES**

Calibration File No.: 301420

**CERTIFICATE OF CALIBRATION**

It is certified that the equipment identified below has been calibrated in the  
**NCL CALIBRATION LABORATORIES** by qualified personnel following recognized  
procedures and using transfer standards traceable to NRC/NIST.

Equipment: Miniature Isotropic RF Probe

Manufacturer: APREL Laboratories/IDX Robotics Inc.

Model No.: E-009

Serial No.: 115

Customer: APREL

Asset No.: 301420

Calibration Procedure: SSI/DRB-TP-D01-032

Cal. Date: 9 November, 2000 Cal. Due Date: 8 November, 2001  
Remarks: None

Calibrated By: \_\_\_\_\_

**NCL CALIBRATION LABORATORIES**

51 SPECTRUM WAY  
NEPEAN, ONTARIO  
CANADA K2R 1E6

Division of APREL Lab.  
TEL: (613) 820-4968  
FAX: (613) 820-4161

