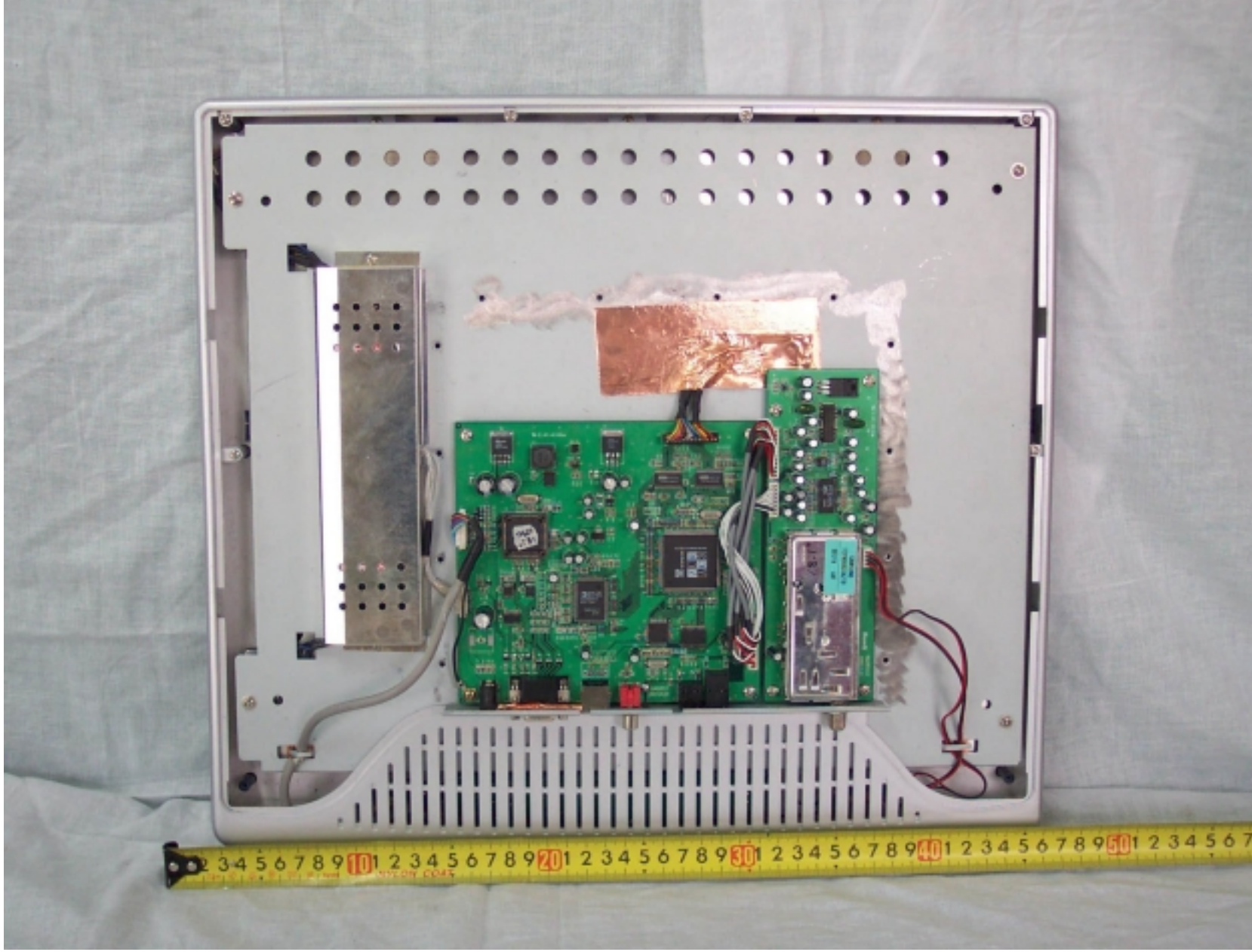
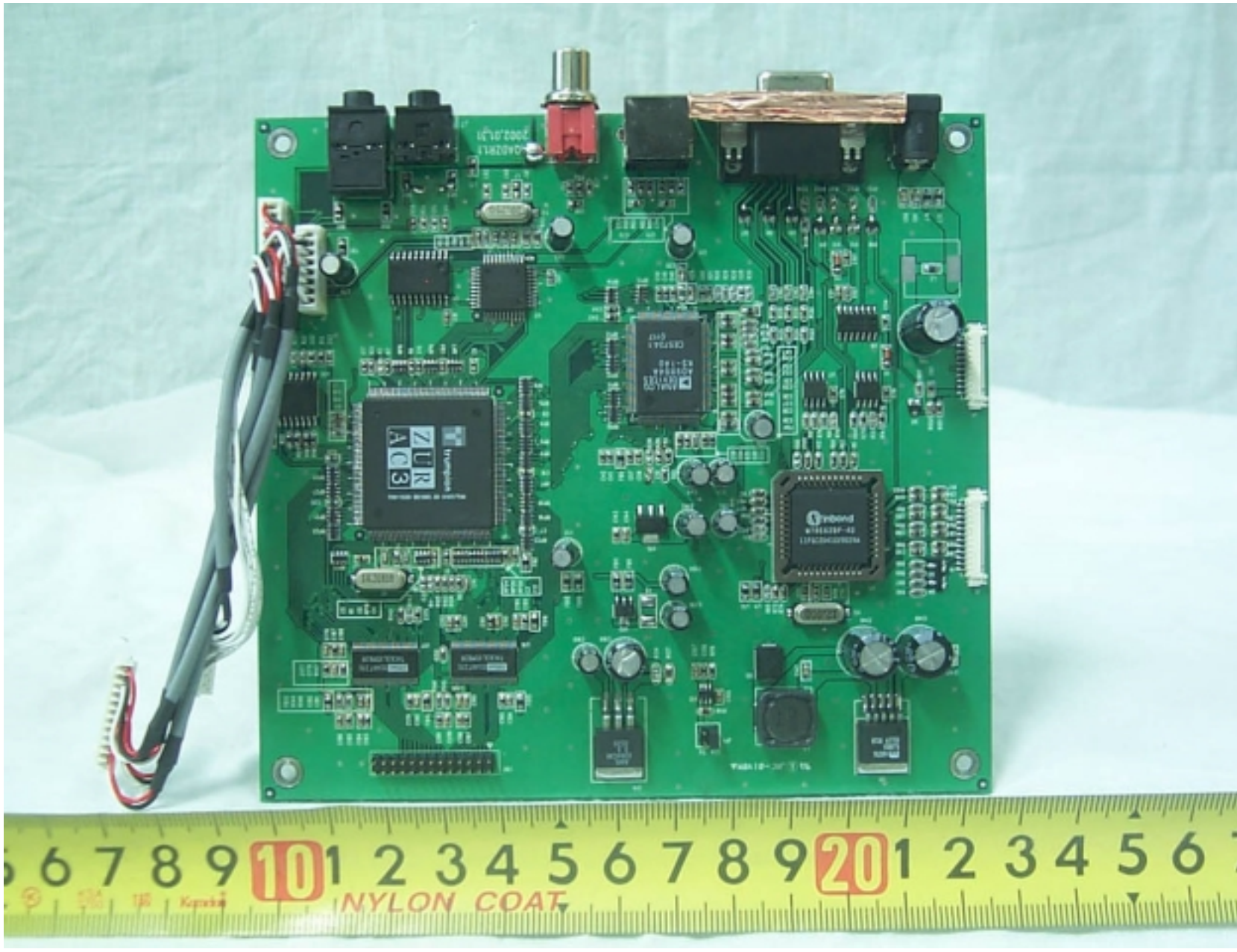


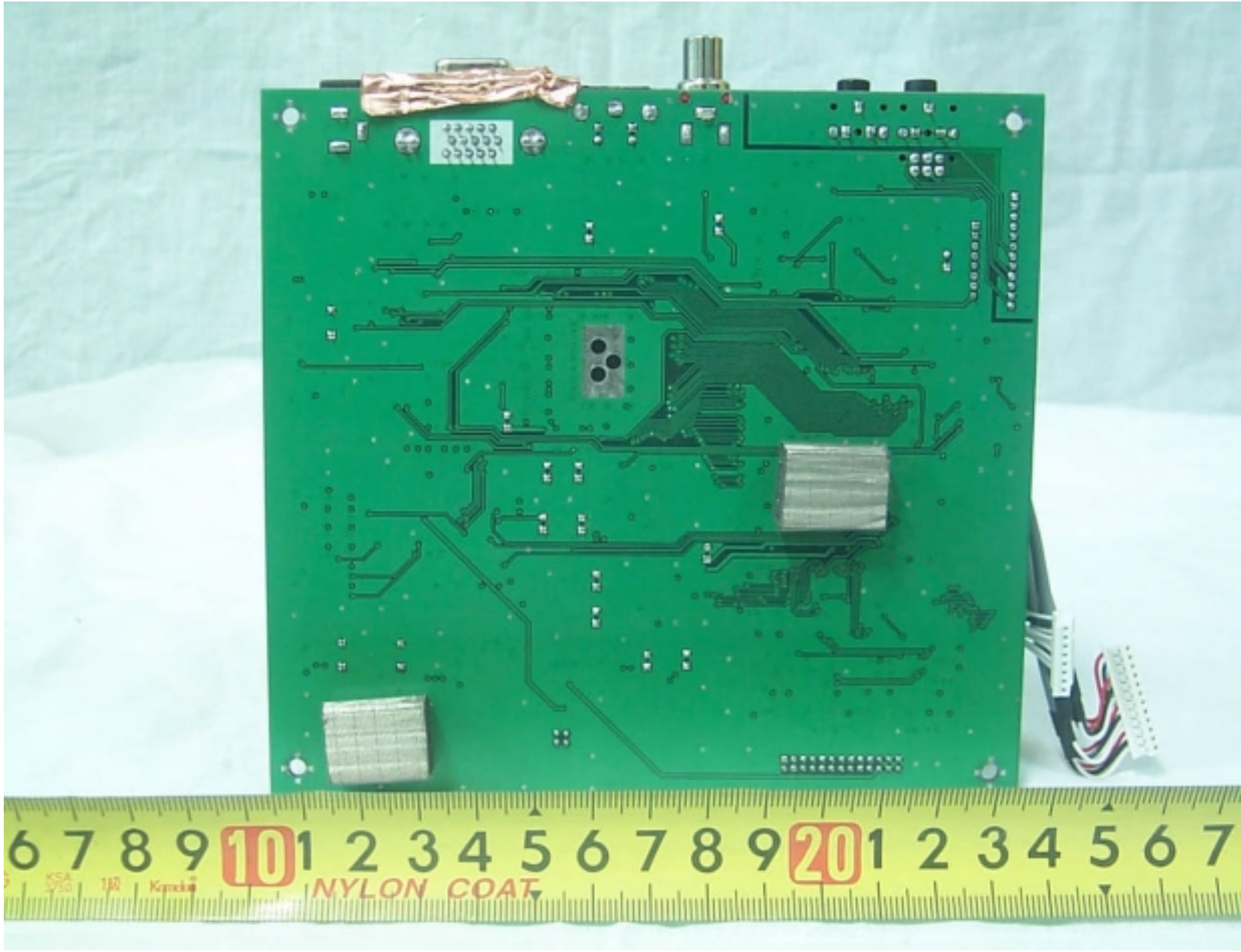
● Inside View of EUT



- Front View of Main Board



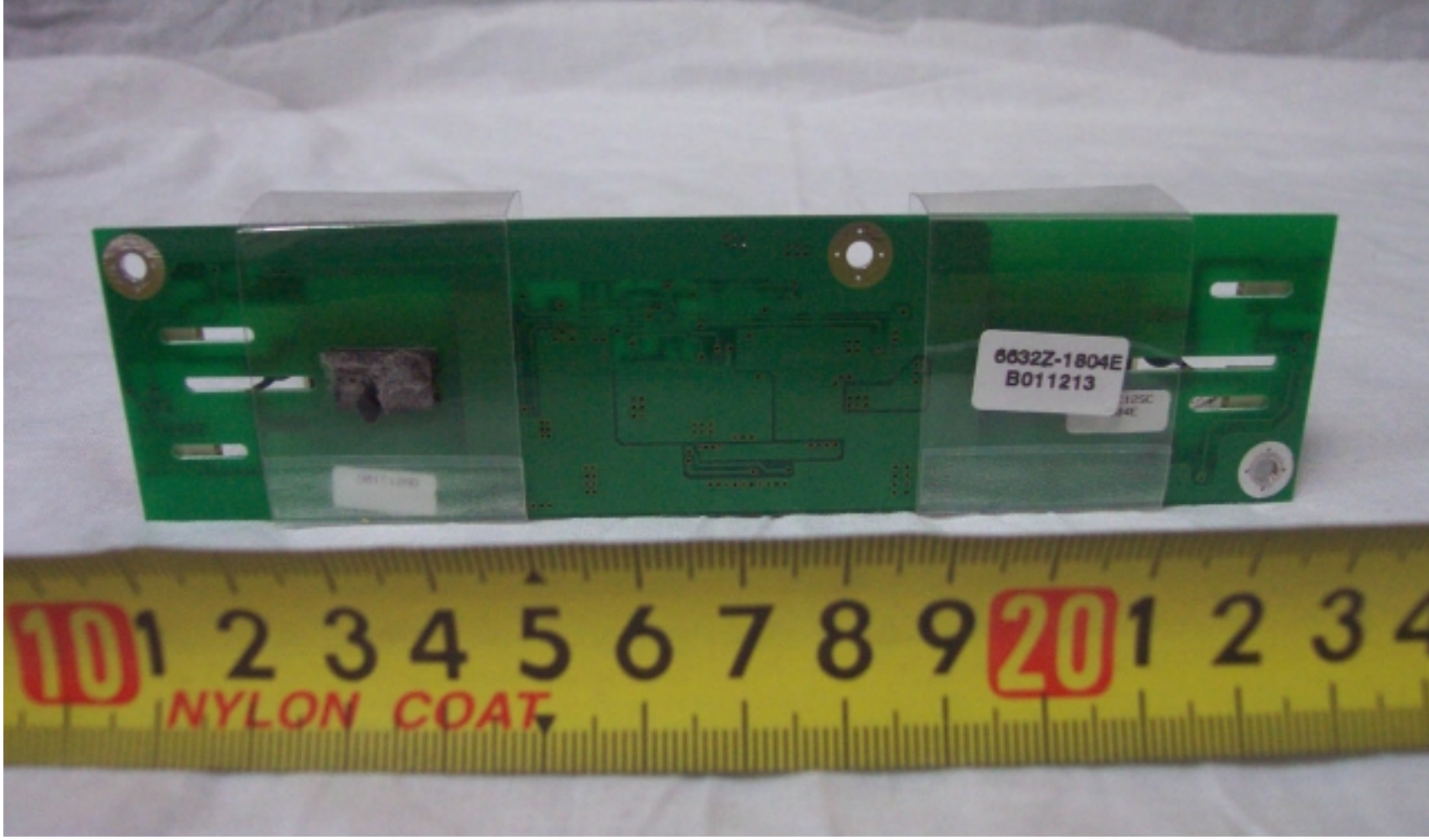
- Rear View of Main Board



● Front View of inverter Board



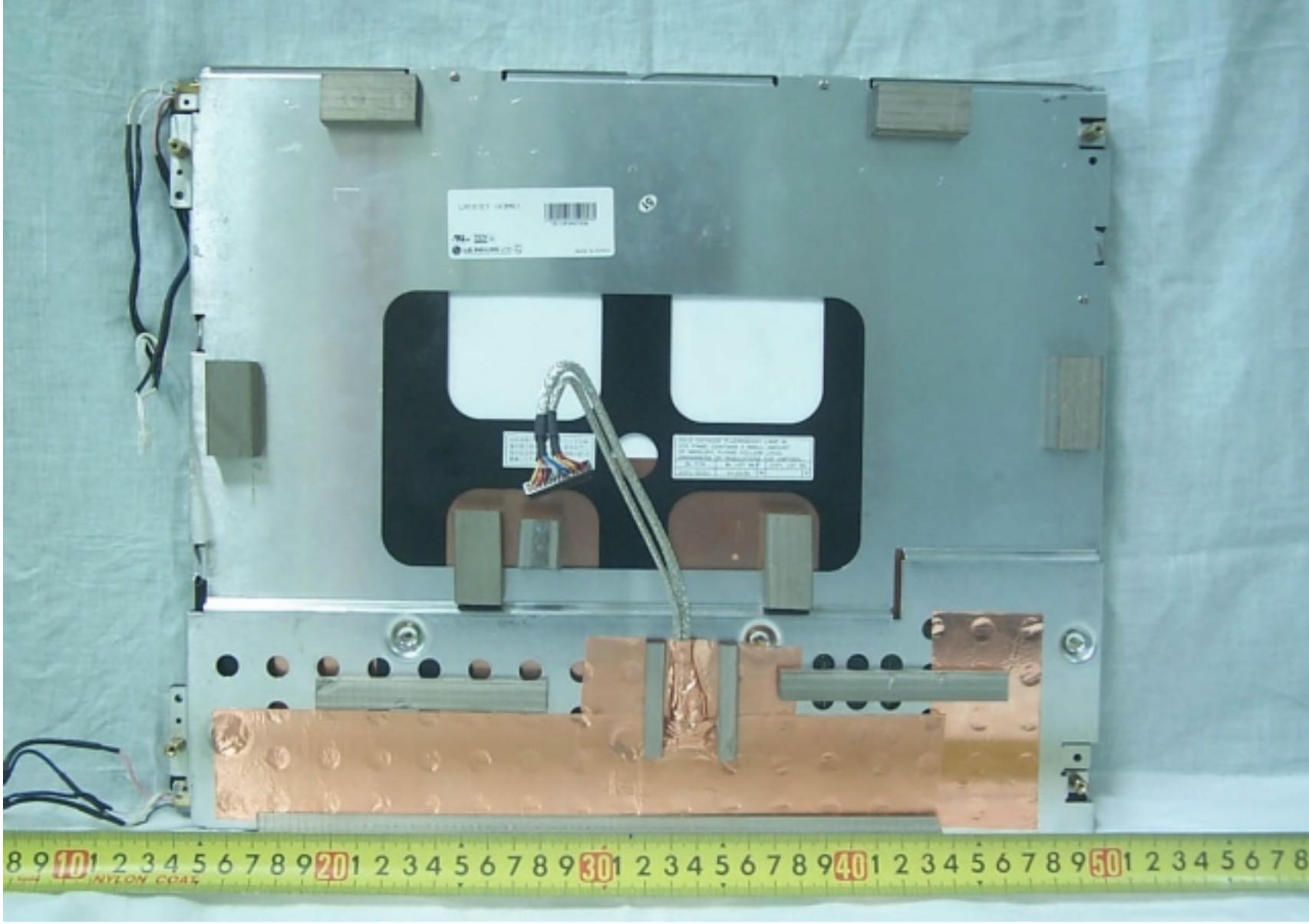
● Rear View of Inverter Board



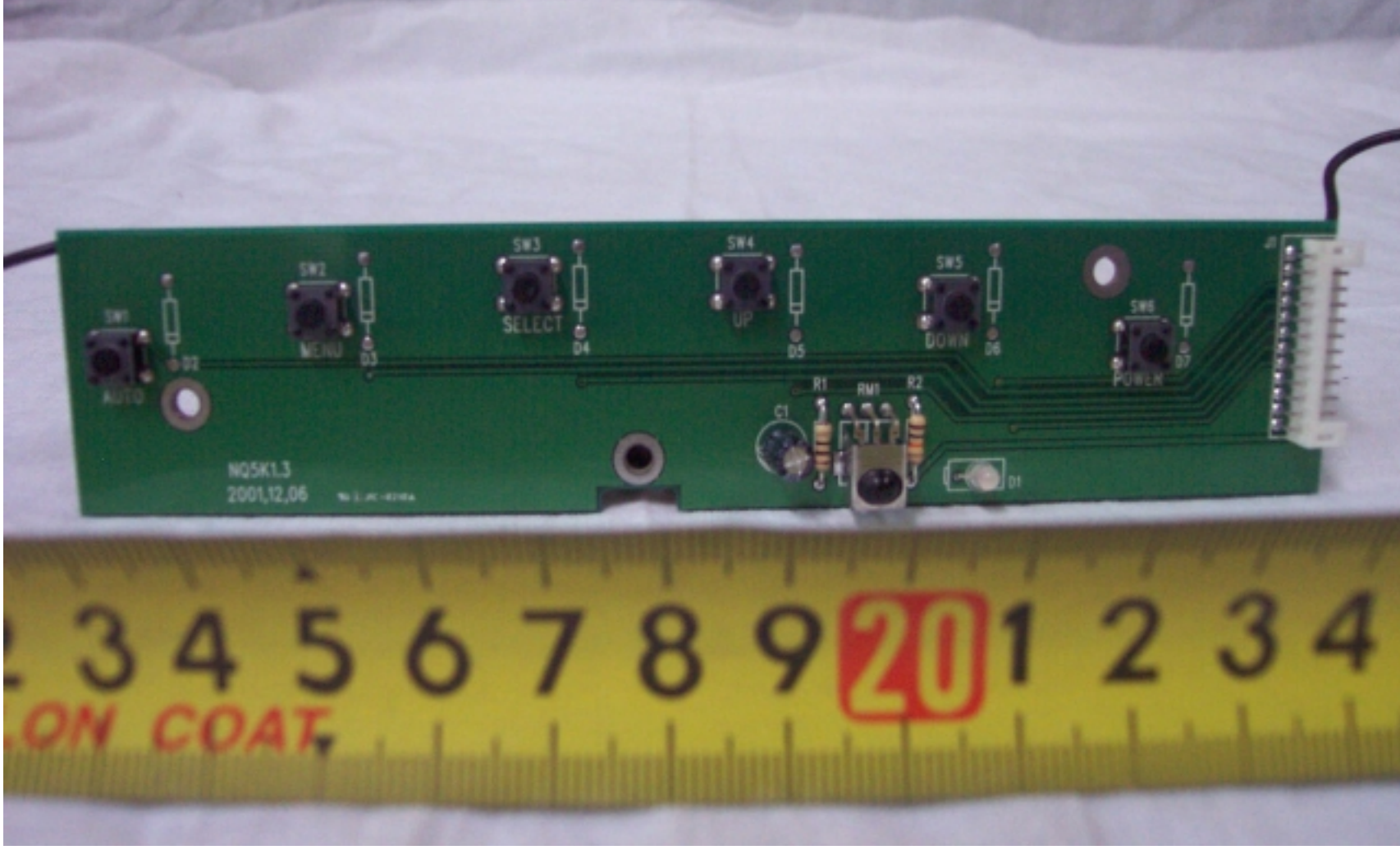
● Front View of LCD



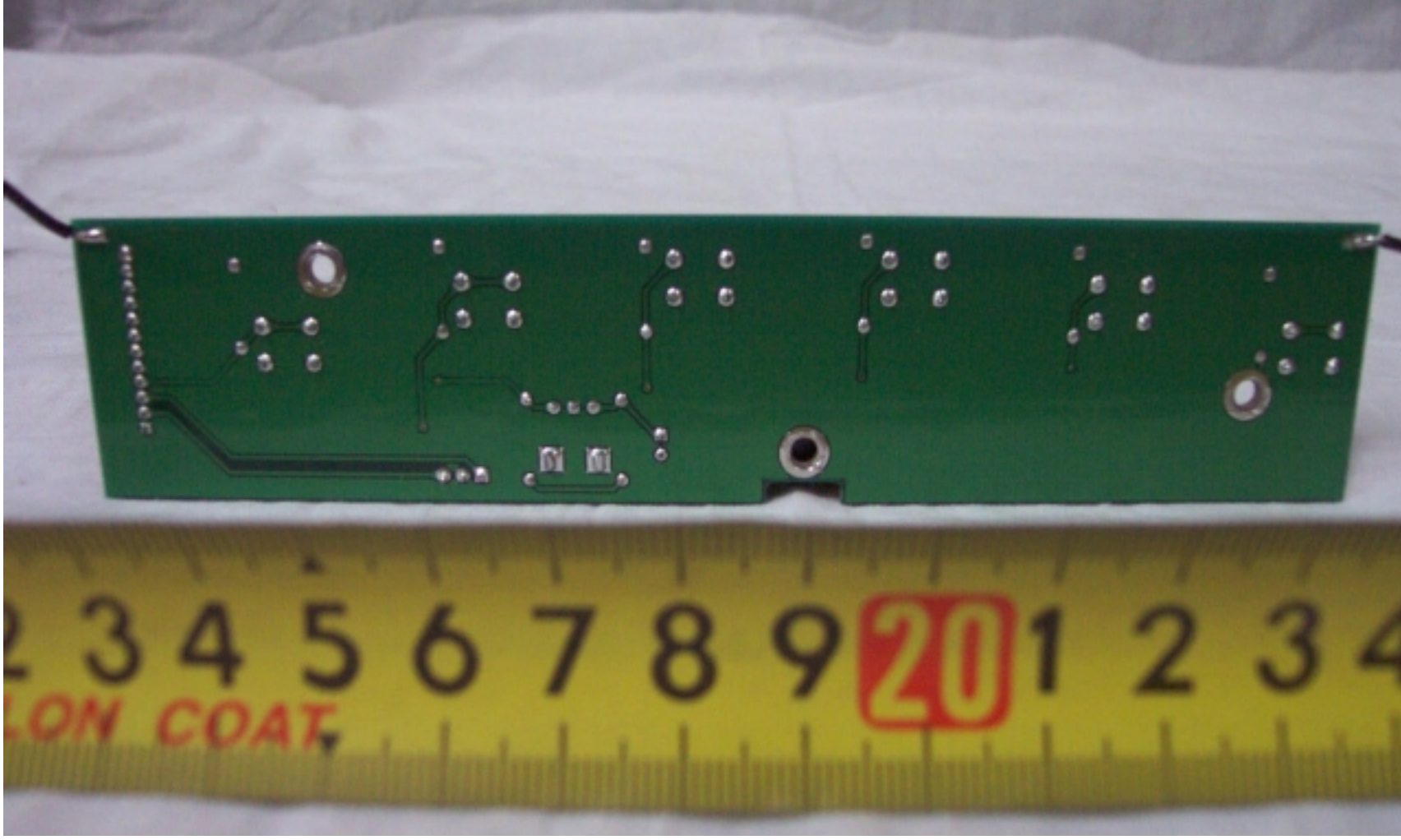
● Rear View of LCD



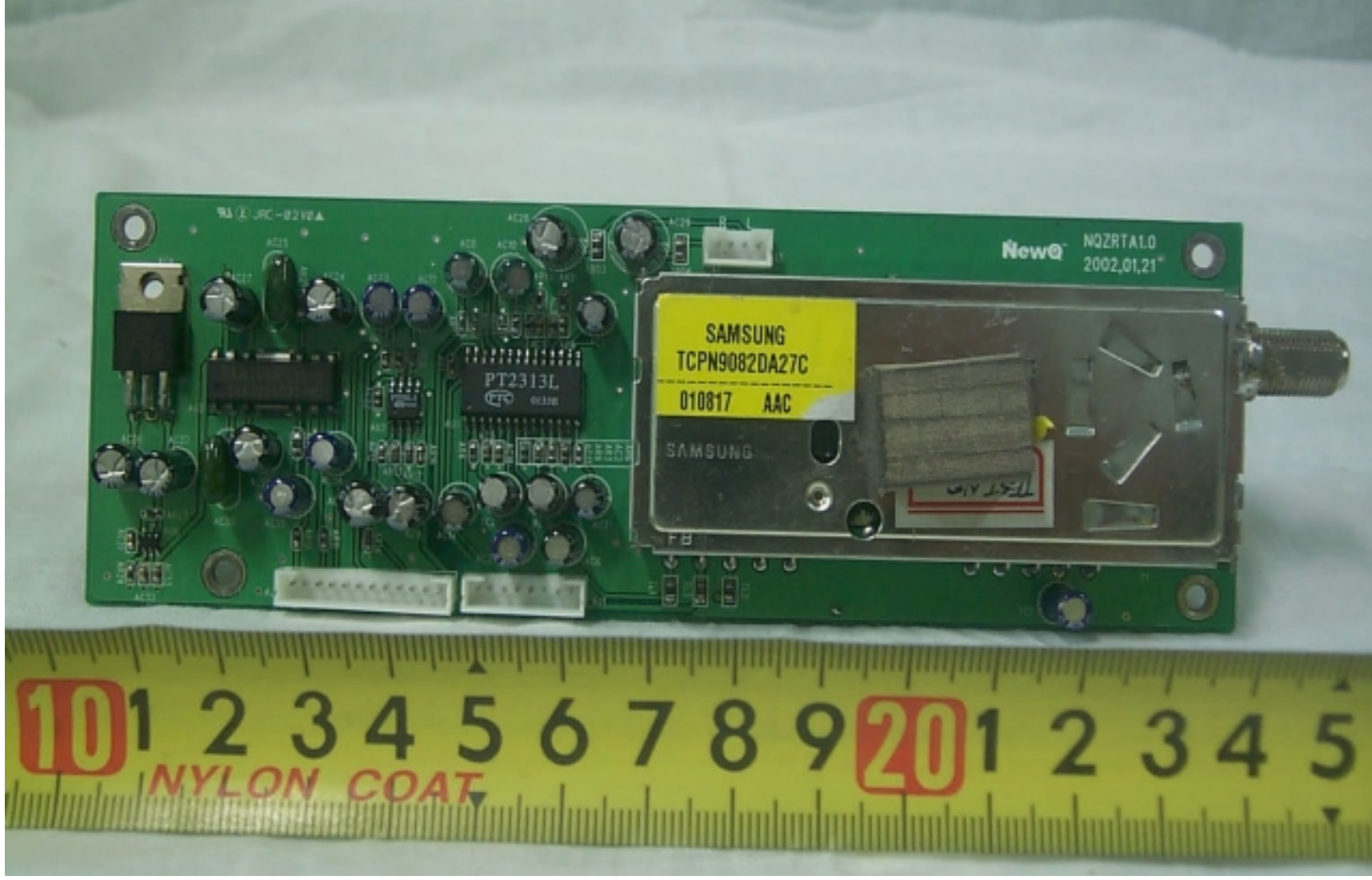
● Front View of OSD Board



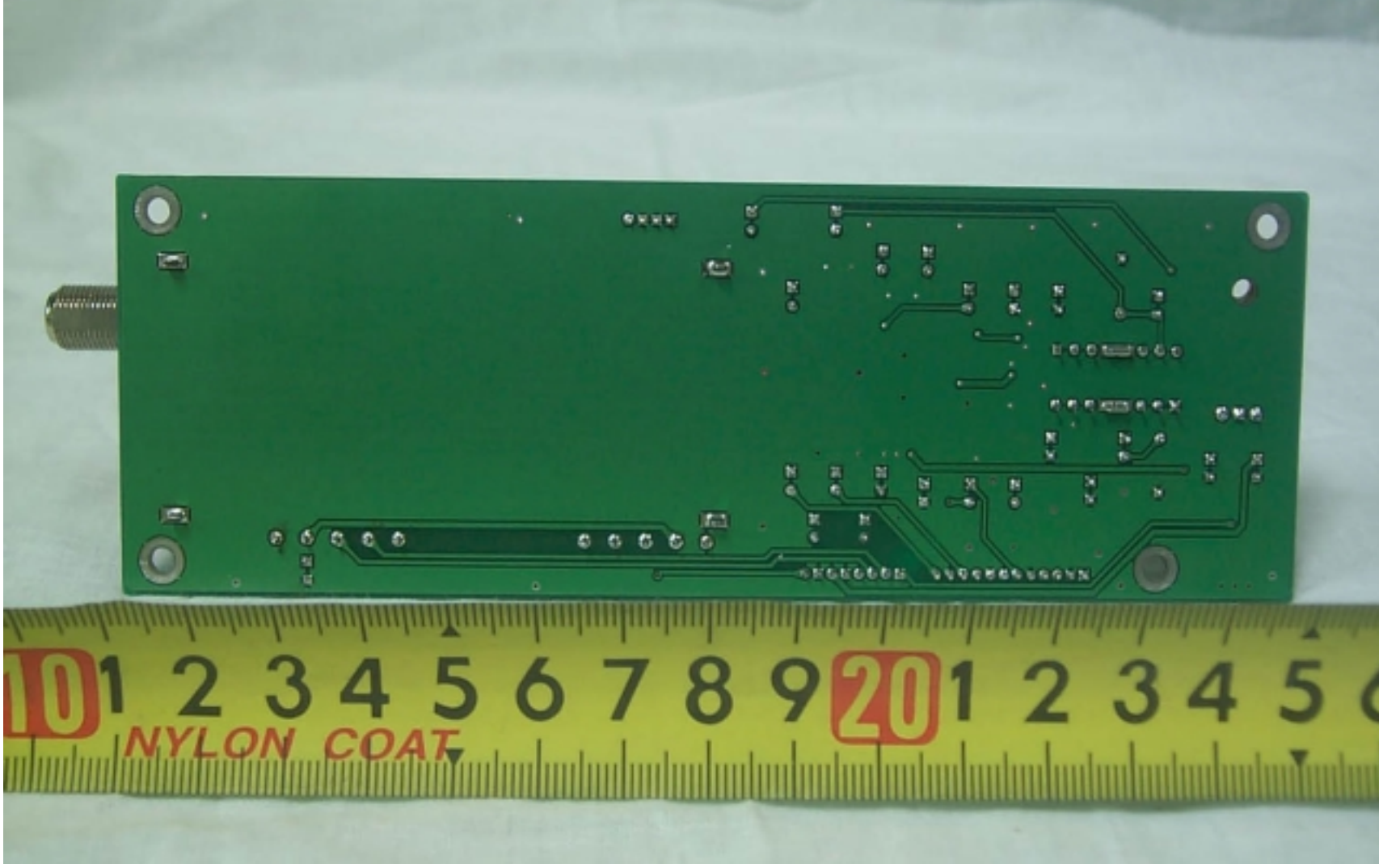
● Rear View of OSD Board



● Front View of Tuner Board



● Rear View of Tuner Board



● Enclosure View of Adapter

