

# USER GUIDE

Version 2.0.0

## Specification

### << Process / Data >>

- Verification Time                      Average 0.01 sec.
- Registration Time                      Average 0.7 sec.
- False Rejection Rate                      Less than 0.1%
- False Acceptance Rate Less than 0.0001%
- Data Size                                  132 Bytes
- Communication                          USB

### << Application >>

- 3 buttons (Include Wheel Scroll Button)
- OS : Windows 98/SE/ME  
Windows 2000, XP, Linux/Unix (Contact us)
- CPU : Pentium 133 MHz or better
- HDD : 20MB or more free space
- Memory : 16MB or more
- Interface : USB port
- Internet : Explorer 4.0 or better
- Resolution : 540 DPI
- Power : 5V/15mA



## FCC NOTICE

THIS DEVICE COMPLIES WITH PART 15 OF THE FCC RULES.  
OPERATION IS SUBJECT TO THE FOLLOWING TWO CONDITION:  
(1) THIS DEVICE MAY NOT CAUSE HARMFUL INTERFERENCE, AND  
(2) THIS DEVICE MUST ACCEPT ANY INTERFERENCE RECEIVED,  
INCLUDING INTERFERENCE THAT MAY CAUSE UNDERSIRED  
OPERATION.

This equipment has been tested and found to comply with the limits for a Class B digital device, pursuant to part 15 of the FCC Rules. These limits are designed to provide reasonable protection against harmful interference in a residential installation. This equipment generates, uses and can radiate radio frequency energy and, if not installed and used in accordance with the instructions, may cause harmful interference to radio communication. However, there is no guarantee that interference will not occur in a particular installation. If this equipment does cause harmful interference to radio or television reception, which can be determined by turning the equipment off and on, the user is encouraged to try to correct the interference by one or more of the following measures :

- Reorient or relocate the receiving antenna.
- Increase the separation between the equipment and receiver.
- Connect the equipment into an outlet on a circuit different from that to which the receiver is connected.
- Consult the dealer of an experienced radio/TV technician for help.

NOTE : The manufacturer is not responsible for any radio or TV interference caused by unauthorized modifications to this equipment. Such modifications could void the user's authority to operate the equipment.

# **SecuTouch 2.0.0 User Guide List**

---

## **1. Product Specification**

1. Introduction
2. Components include

## **2. Software Installation**

1. Overall installation guide
2. Connection
3. Device driver installation
4. SecuTouch software installation

## **3. Uninstall Software**

1. SecuTouch software uninstallation
2. Device driver uninstallation

## **4. User Management**

1. User registration
2. User deletion
3. Properties
4. View
5. System configuration

## **5. Logon**

# **SecuTouch 2.0.0 User Guide List**

---

## **6. Folder Encryption and Decryption**

1. Folder encryption
2. Folder decryption

## **7. File Encryption and Decryption**

1. File encryption
2. File decryption
3. Etc.

## **8. Screen Saver**

## **9. System Tray**

1. Introduction of tray menu
2. File encryption
3. File decryption

## **Q&A**

# **Chapter 1**

## **Product Specification**

## **1. Introduction**

SecuTouch is a state-of-the-art PC security product for user authentication and information security. The convenience and security is realized by SecuTouch fingerprint optical mouse (DFS-2001U) developed by Daemin Electronics Co., Ltd.

Nothing can be easier and more secure than fingerprint.

Worry about forgery or forgotten passwords? Complicated algorithms are not necessary. SecuTouch securely protects your system by fingerprint.

Logon, Screensaver, and perfect protection of files and folders.

SecuTouch protects the system with logon, screensaver, and file/folder encryption using fingerprint authentication. Multi-authentication and administrative functions are provided as well.

Fingerprint identification plus optical wheel mouse - SecuTouch (DFS-2001U)

## **2. Application**

- Identification and verification of individuals for e-commerce, e-mail, and EDMS.
- Criminal investigation by the police
- Data protection and system access control
- Security for Internet
- Banking (ATM, individual safe)
- All the fields for user authentication

## **3. System Requirements**

- OS : Microsoft Windows 98/SE/ME (Extra sale for Microsoft Windows 2000 and Linux/Unix versions)
- CPU : Pentium 133MHz or higher
- HDD : More than 20 MB needed
- Memory : More than 32 MB
- Interface : USB port
- Installation program : Microsoft Internet Explorer 4.0 or above  
(Microsoft Internet Explorer 5.5 include in the Install CD)

## 1. Components Included



## 2. SecuTouch 2.0.0 Installation CD

## 3. Manual

- Warranty Form (Attached in manual)
- License Agreement (Attached in manual)

## **Chapter 2**

# **Software Installation**



## **1. Overall Installation Guide**

1. Turn your system's power on
2. Connect fingerprint optical mouse to the system
3. A message for inserting the CD will appear when the Windows 98 Plug & Play detects a new hardware.
4. Insert the 'SecuTouch 2.0.0' CD into the CD-ROM drive, and then follow the hardware installation wizard to install the fingerprint identification optical wheel mouse.
5. Run the setup.exe file in Install CD to install the SecuTouch 2.0.0 program.
6. Restart the system after installation, and logon with the name and password specified.

**\* Default name and password is "finger", "finger".**

7. Authentication method can be changed by fingerprint, password, or both using the SecuTouch Administrator.

### **- Attention -**

**If Internet Explorer 4.0 or above version is not installed, Run IE55/ie5setup.exe included in the SecuTouch 2.0.0 CD to install Internet Explorer 5.5**

### **USB**

**System mainboard should support USB and the USB port should be set as 'Enable' in CMOS option.**

## **2. Mouse Connection**

After restart your system, connect SecuTouch fingerprint optical mouse to the system's USB port.

### 3. Device Driver Installation

#### USB (Plug & Play support)

When the fingerprint optical mouse is connected to the system, 'New hardware installation wizard' with 'New hardware detected' will appear.

#### - Warning -

**Main system board must support USB and USB port should be set as 'Enabled' in CMOS option.**



Click 'Next' in the 'Add New Hardware Wizard' window shown above.



Select 'Search for the best driver for your device' and then click 'Next'.



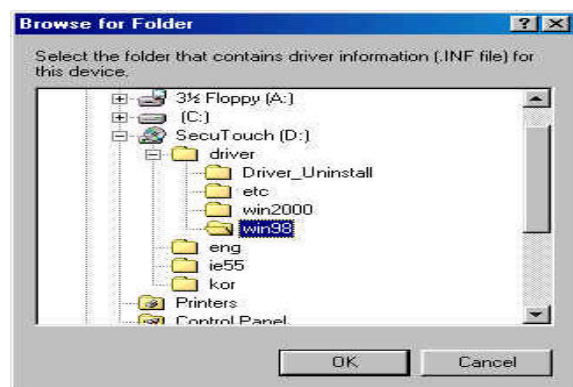
Insert CD and select 'CD-ROM Drive' and then click 'Next'.

### - Warning -

When CD-ROM drive path is not found



1. Check whether CD is properly inserted.
2. Click **Back** after checking CD to return to 'Add New Hardware Wizard' dialog box.



3. Select 'Specify a location' and then click 'Browse'.
4. In the 'Browse for Folder' windows, select "CD-ROM drive:\[Win98|Win2000]" and click 'OK'.



5. Installation will start after you click '**Next**' in the above window.



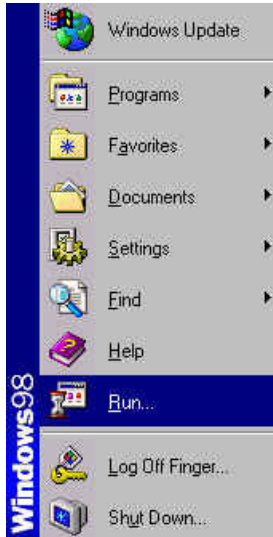
6. When the 'DFS-2001U' device driver is successfully installed, then Click 'Finish' in this window.

**\* During the SecuTouch optical mouse driver installation process, you may go through the above installation steps repeatedly to setup the related files into your system properly.**

**\* You may need to insert the Windows Installation CD.**

## 4. SecuTouch Software Installation

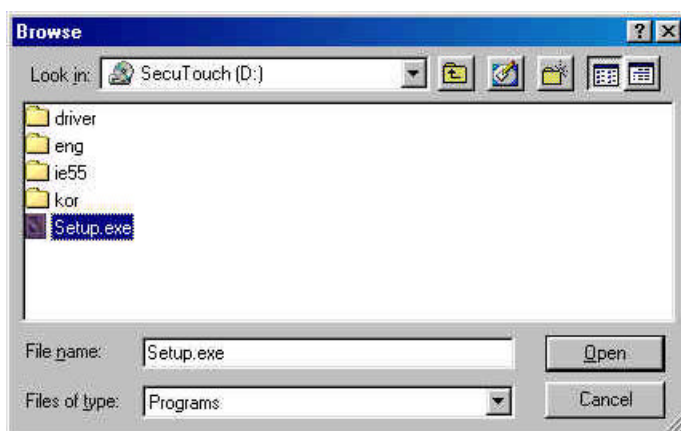
Start to install SecuTouch 2.0.0.



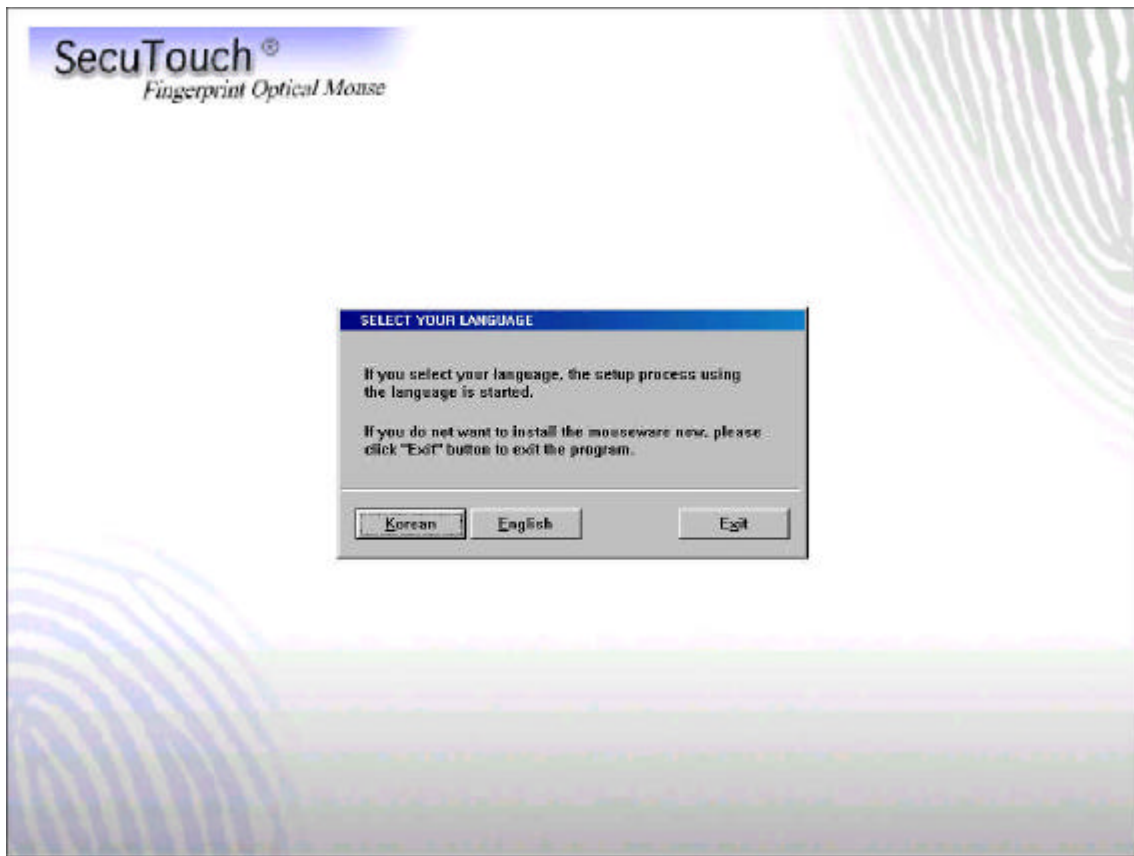
Select '**Run**' from the start-up menu.



In the above window, type the drive and name of the program or specify the path by clicking '**Browse**'.

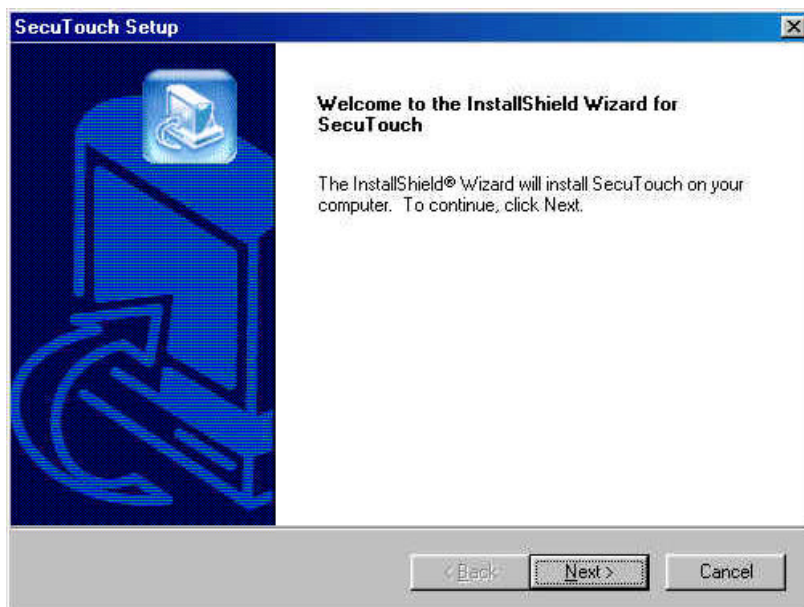


Select '**Setup.exe**' in the window above, and click '**Open**'. Click '**OK**' in the '**Run**' window once the proper path is selected.

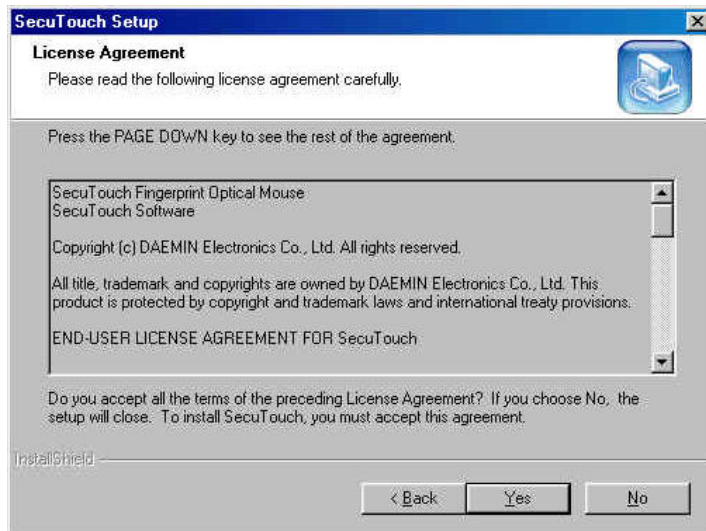


Select your language.

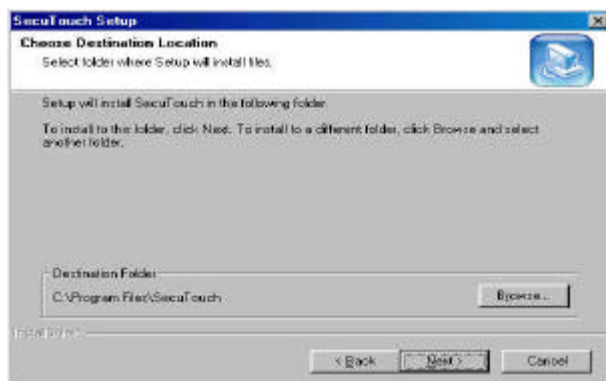
(Current version supports Korean and English only)



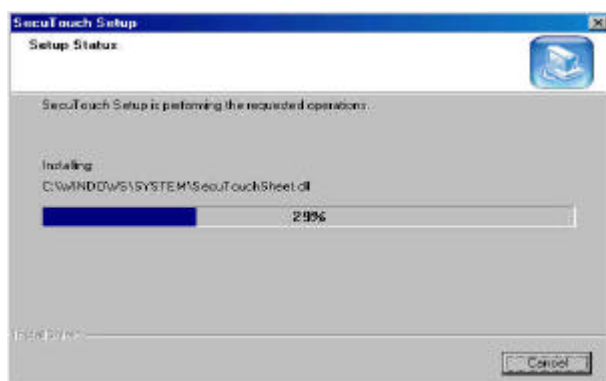
It is the program installation window. Click 'Next'.



It is the '**Software License Agreement**' window. Read the agreement carefully and click '**Next**'.

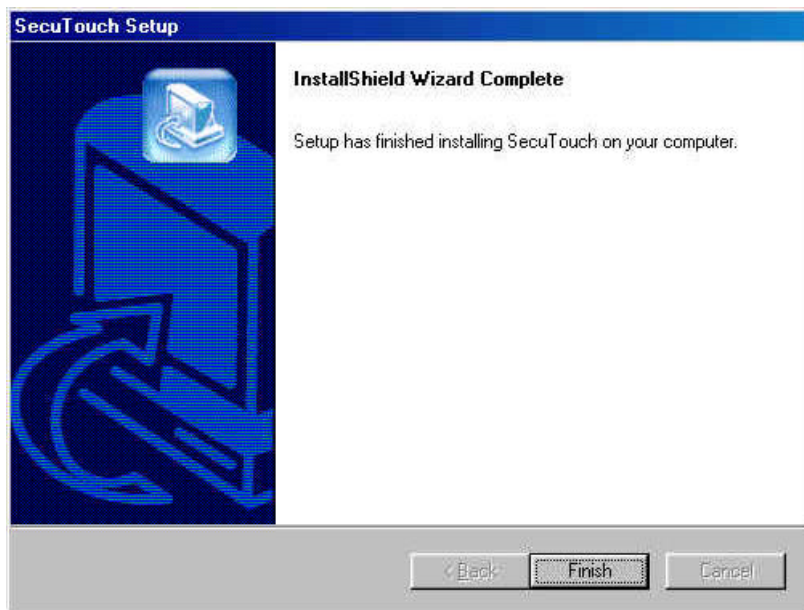


Select path of installation then click '**Next**'.

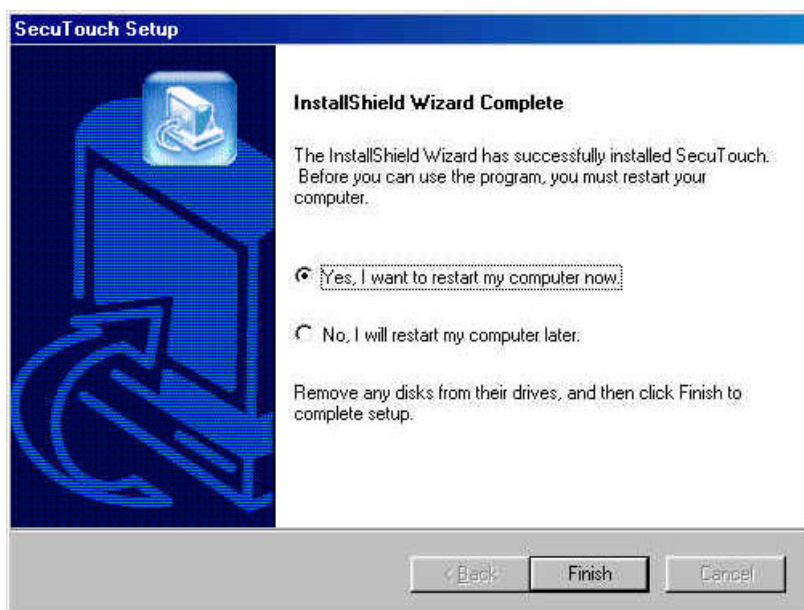


Program is being installed to selected path.





Installation has finished. Check 'Finish' .



SecuTouch program is successfully installed. Click '**Finish**' button, then Secutouch fingerprint optical mouse installation process will be completed.

**When the installation completed, reboot your system.**

**All the programs are installed for SecuTouch fingerprint optical mouse.**



## **Chapter 3**

### **SecuTouch Software Uninstall**

## 1. SecuTouch Software Uninstall

Only the Administrator can uninstall the SecuTouch Software.

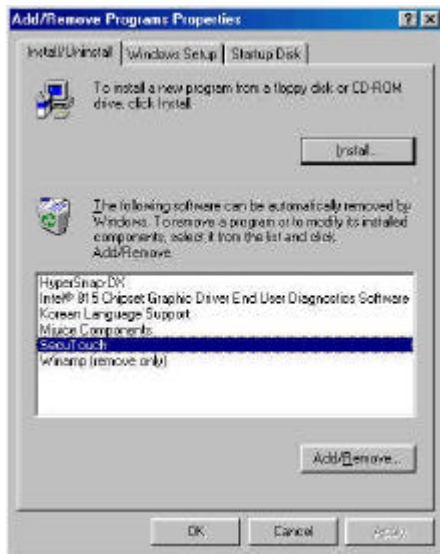
The permission of the administrator can be set when a new user is registered in <Administrator>.



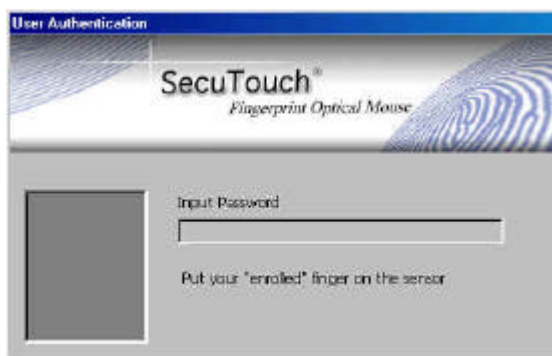
Click **start-up**, Settings and **Control Panel** in turn.



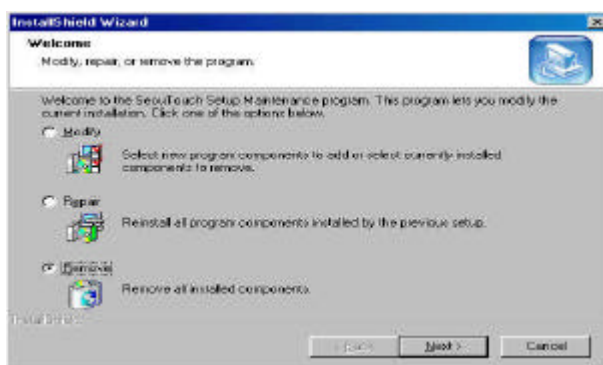
Double-Click 'Add/Remove Programs' in the Control Panel.



Click '**Add/Remove**' after selecting '**SecuTouch**' in the '**Install/Uninstall**' tab.



Input password or fingerprint used when you logon the system.  
(You should have the administration permission)



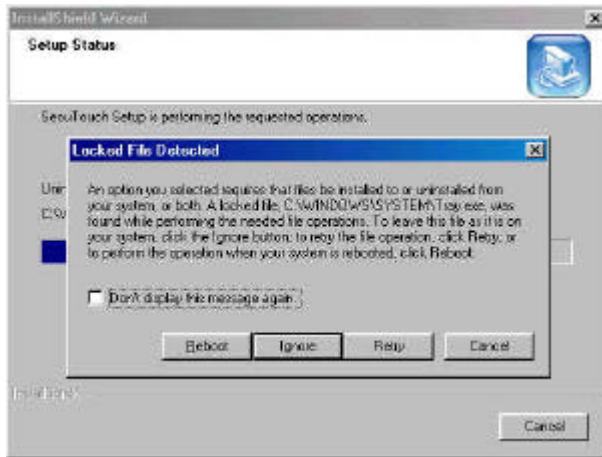
Select '**Remove**' and click '**Next**'.  
This is the confirmation window of deleting program.



If you really want to delete program, click '**Yes**'.

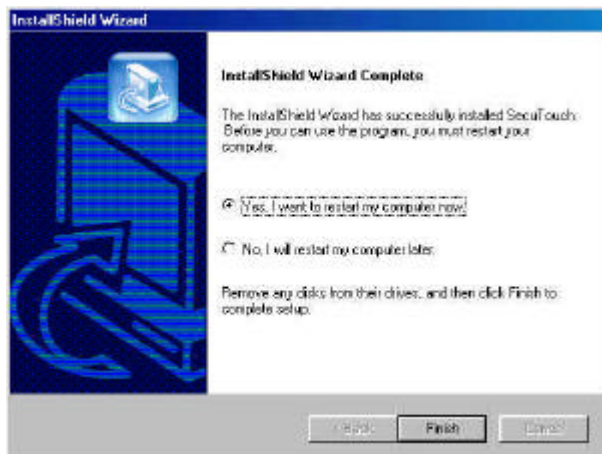
**This manual is prepared for fingerprint authentication users.**

**Different windows may appear in compliance with different authentication method such as password/fingerprint/both.**



The above window shows progress of deletion.

When 'Locked File Detected' window is shown, click '**Reboot**'.



Click '**Finish**' and restart window system.

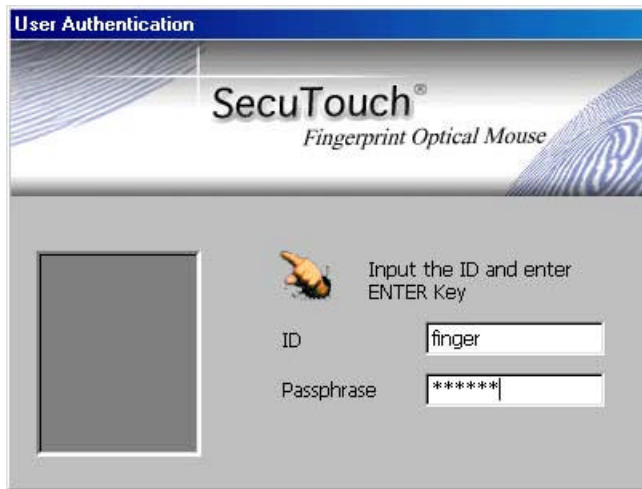
## **2. Delete Device Driver**

For deleting device driver, use Windows Control Panel or 'Remove Utility' in installation CD[CD-ROM drive:\driver\Driver-Uninstall].

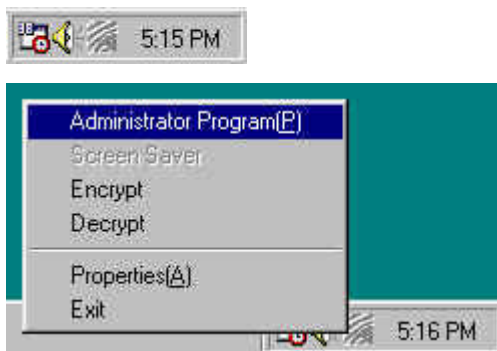
For deleting device driver, Windows98 users should execute use 'Remove9X.exe' and windows 2000 users should execute 'Remove2K.exe'.

## **Chapter 4**

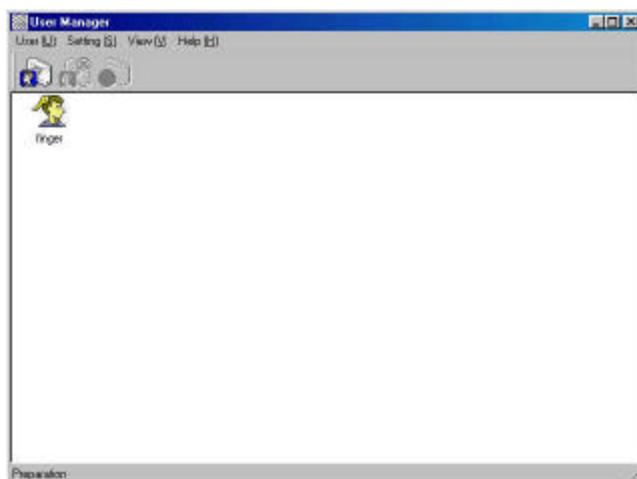
# **User Management**



After rebooting, you must use login ID = “finger”, password = “finger” to logon the system. It is recommended that you must change administrator's password or make new administrator and then delete 'finger' ID.

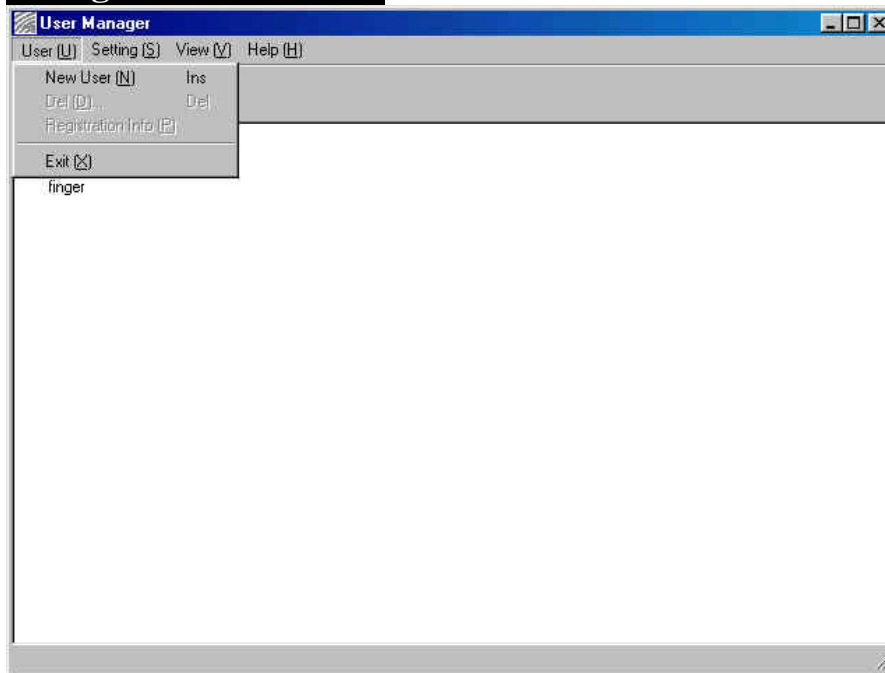


When you run user management wizard, you need password 'finger'. Input password and click 'OK'. Default password is 'finger'.



Above window is about user's fingerprint register, delete and manage.

## 1. Register a New User



Click <New user> toolbar button, or select 'New User' in the 'User' menu run 'user register wizard'.

The screenshot shows the 'SecuTouch Fingerprint Optical Mouse' user register wizard. The window has a title bar with a close button. The main area contains the text 'Please, enter the user name and description for user logon.' Below this, there are two input fields: 'User Name :' with the value 'secutouch' and 'Description :' with the value 'admin'. At the bottom, there are three buttons: '<<Back', 'Next >', and 'Cancel'.

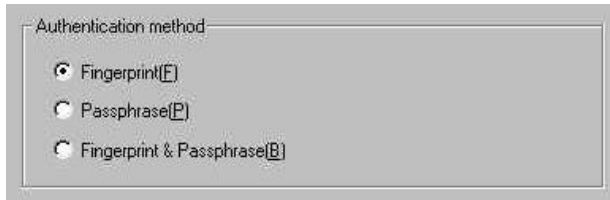
Above window is 'User register wizard'. Input user's name and description (optional). Click 'Next'.

## 1) Select identification method



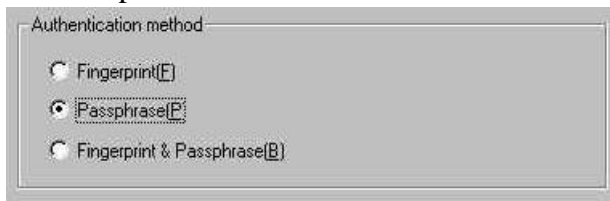
Select identification method and Administrator.

### 1. When fingerprint is selected.



The finger icon appears when fingerprint is used for authentication and the fingerprint will be used for encryption/decryption.

### 2. When password is selected.



The key icon appears when password is used for authentication and the password will be used for encryption/decryption.



3. When both are selected.

A screenshot of a dialog box titled "Authentication method". It contains three radio button options: "Fingerprint[E]", "Passphrase[P]", and "Fingerprint & Passphrase[B]". The third option, "Fingerprint & Passphrase[B]", is selected and highlighted with a dashed border.

The finger and key icons appear when fingerprint and password are used for authentication and both will be used for encryption/decryption.

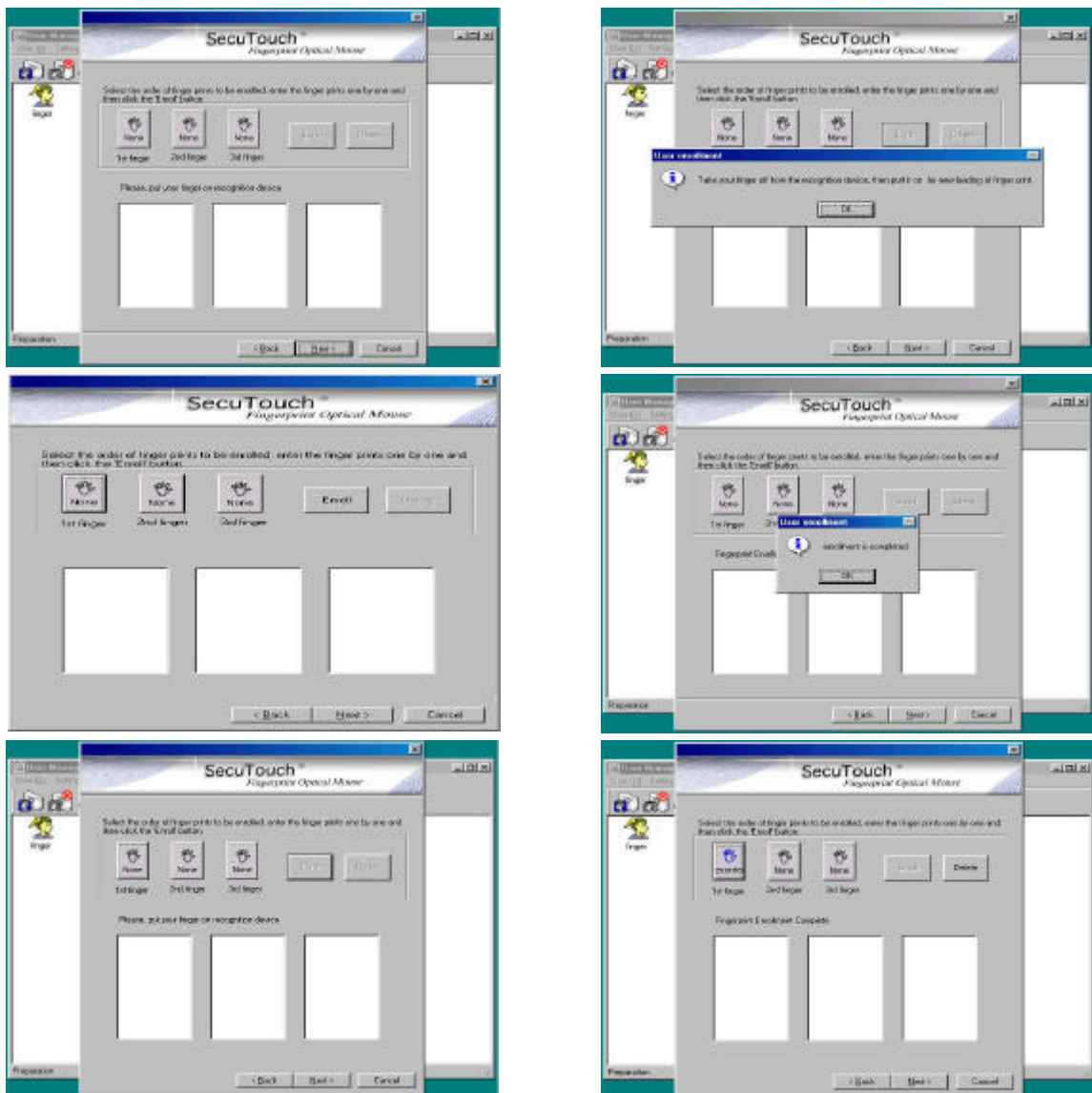
## 2) Administration permission setting.

A checkbox labeled "Administrator[A]" with an unchecked box.

Administrator authorizes a user to access the 'SecuTouch Administrator'.

If it is checked, the user becomes to have a administration permission.

### 3) Fingerprint enrollment

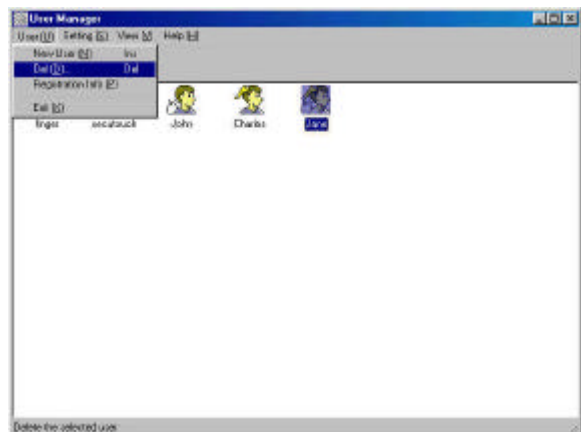
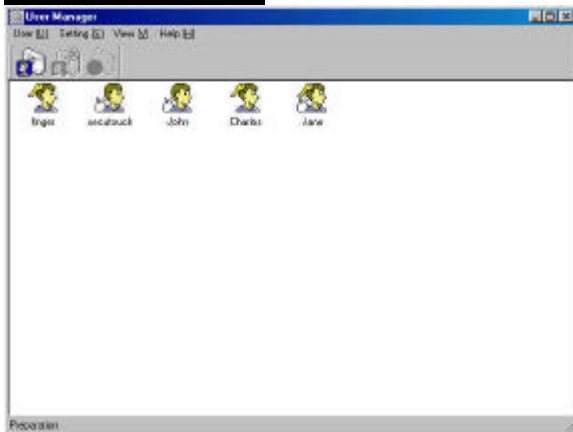


1. Above windows show the procedure of fingerprint enrollment.  
You can register other fingerprints of your hands using 'Second' and 'Third'.
2. Click first finger button, then click enrollment button.
3. Place first fingerprint on the sensor and enroll fingerprint.
4. For perfect security, enrollment will be completed after two confirmation times per finger. Click 'OK' button, then place finger on the sensor again.
5. Fingerprint enrollment is completed.
6. Above window shows that the first fingerprint has enrolled. The second and the third fingerprint can be enrolled by same method.



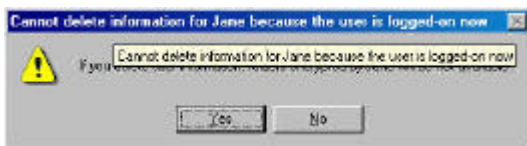
Click '**Finish**', to finish the enrollment, and the related data are saved.

## 2. Delete a User



To delete enrolled fingerprint and all the related data, select user and click '**Delete**' button in the tool-bar.

Select user and click mouse right button and click '**Delete**'.

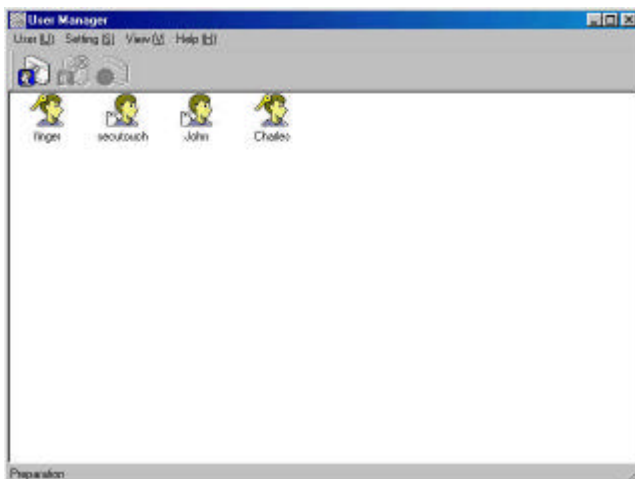


Confirmation window to delete the selected user.

### - Warning -

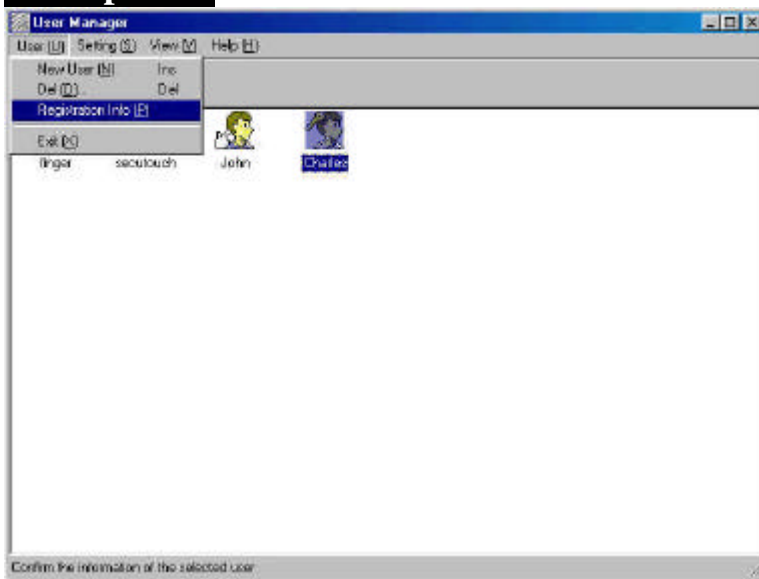
**Before you delete a registered user, please check if there are any encrypted files/folders of that user.**

**After the owner is deleted, no one can access them.**



The selected user has been deleted.

### 3. Properties



Select user, click '**Properties**' in tool-bar.

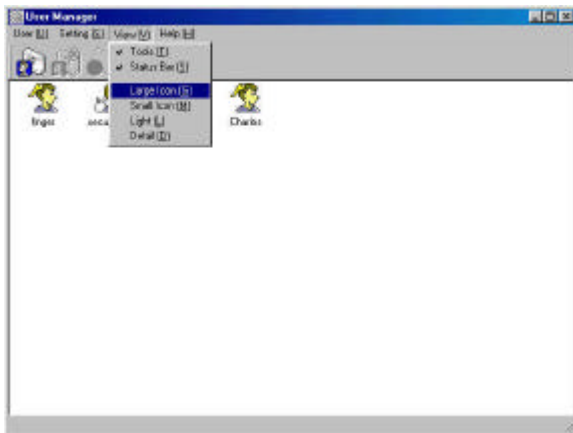
The screenshot shows the 'User enrollment information' dialog box. It has four tabs: 'User Name', 'Authentication method', 'Password Input', and 'Fingerprint enrollment'. The 'User Name' tab is active. Inside the dialog, there is a text area with the instruction 'Please, enter the user name and description for user login.' Below this, there are two input fields: 'User ID' (containing the text 'Charles') and 'Description' (which is empty). At the bottom of the dialog, there are three buttons: 'OK', 'Cancel', and 'Apply'.

You can change or re-input user name, method of authentication, password and fingerprint on each steps of the wizard.  
After changing, click '**OK**' button.

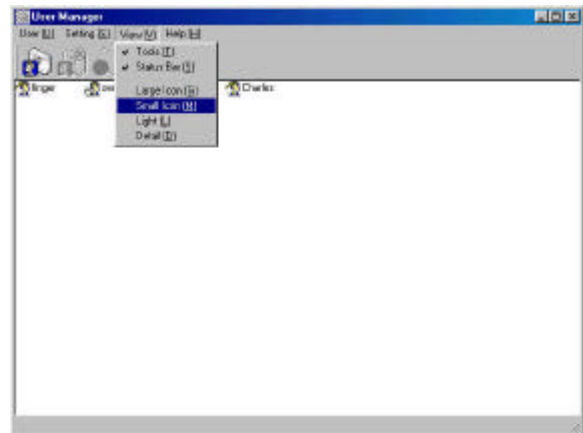
## 4. View

Click 'View' button in tool-bar or click '**View**' in menu.

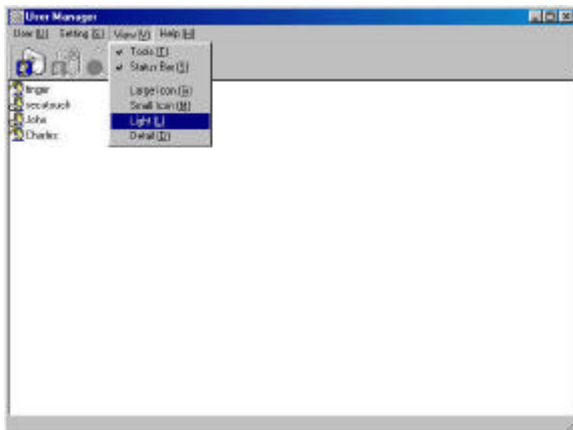
You can see the menu 'Large Icon', 'Small Icon', 'List', 'Detail' to change the view method of the list of users.



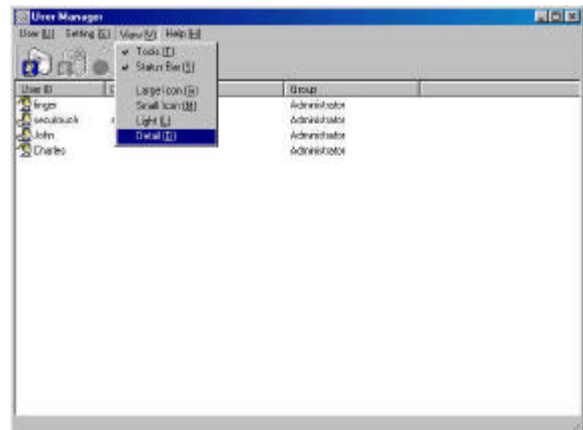
'Large Icon'



'Small Icon'

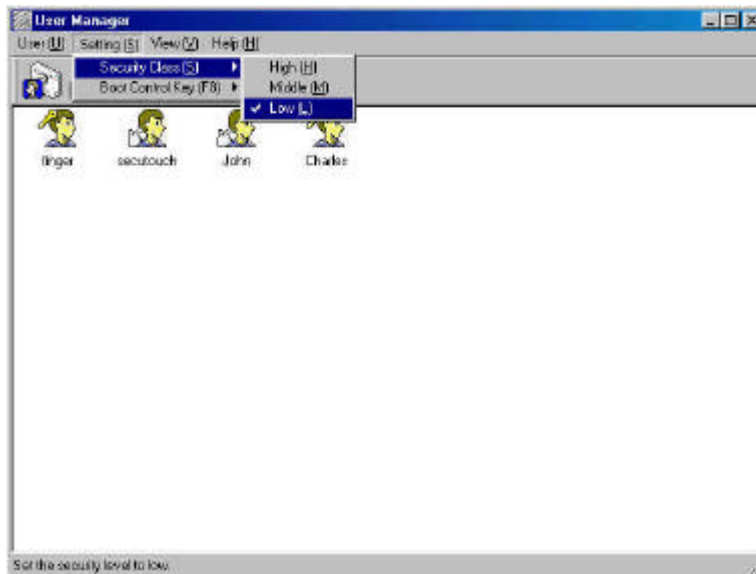


'List'



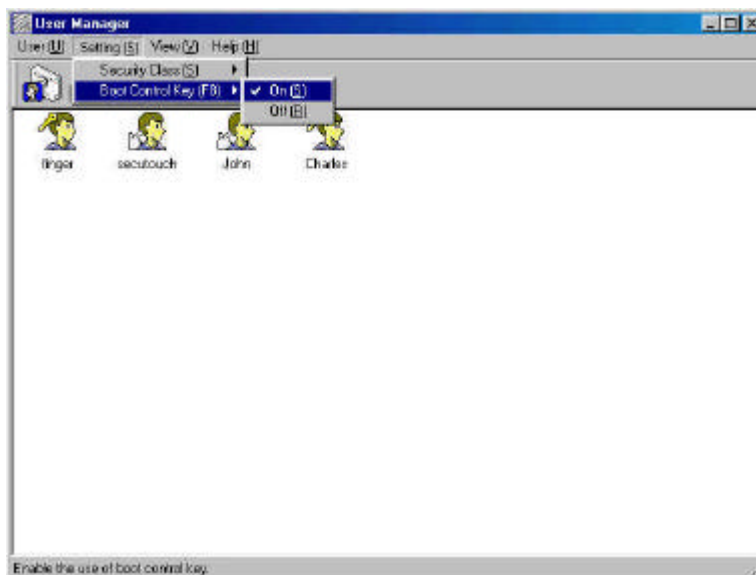
'Detail'

## 5. System configuration



Select Security class as 'High', 'Middle', and 'Low' . When security class is set to 'high' , more rigid rules are applied to authorize the user.

When fingerprint condition is not good, It is recommended about you set the security class to 'Low'.



Above window shows Boot control key on/off.

When 'Boot control key' is off, The system don't allow the boot control by push F5/F8.

When need boot control, set 'Boot control key' to 'On' .