

Using the Optical Mouseware

Buttons Tab.

Assigns functions to the wheel button



- Universal Scroll: Universal Scroll scrolls through a document with out using the scroll bar or mouse wheel. To use Universal Scroll, simply press the wheel button, and then move the mouse in the direction you want to scroll.

- Zoom: Zoom magnifies a document. To zoom, press and hold the Ctrl key and, at the same time, move the wheel forward/back to zoom in/out.

- AutoScroll: AutoScroll scrolls a document automatically without you having to push the mouse wheel continuously. To use AutoScroll, click the mouse wheel, until the AutoScroll anchor icon appears. Move the mouse away from the AutoScroll icon to begin scrolling. You do not have to move the mouse continuously to keep scrolling. The distance between the cursor and the AutoScroll icon determines scrolling speed: the farther the cursor is away from the icon, the faster the cursor speed.

- Other: Hot Key Function
Copy, Delete, Page up/down
- Vertical Wheel Cooperation Function
Office 97 Document Zoom
Shift lock
Switch vertical to horizontal wheel

Wheel

Assigns functions and adjusts scrolling speed



- System (intelli-mouse) mode
- Enhance scroll mode
- Scroll n lines per scroll unit
- Scroll one page per scroll unit

Troubleshooting

Mouse Not Detected

When using the mouse, the computer may not detect it. To remedy this problem, try the following:

- Make sure you have connected the mouse correctly. The mouse cable goes into the computer's mouse port.
- Make sure your mouse port has the proper configuration. Refer to your computer documentation for the correct port configuration.
- You may have other system devices (for example, a modem card) that conflict with the mouse. Check the IRQ/address settings of these devices for conflicts, and change the settings as required. Refer to your computer documentation to make these changes.
- To determine whether the problem is mouse or system related, try the mouse on a second system or a different mouse on your current system.

The Mouse Pointer Does Not Move Properly on the Screen

Adjust the pointer speed from the Mouse Properties.

Included in Mouse Package

- Optical Mouse
- Driver Diskette
- User's Guide

Hardware Specifications

- Interface: PS/2 Only
- Life Time: 80,000h
- Scanning Speed: 1,500/sec
- Cable Length: 1.8m
- OS System: Microsoft Windows® 95, Windows® 98, SE, ME, Windows NT® 4.0 (SP3), Windows® 2000

FREETOUCH OPTICAL MOUSE

User's Guide

1. Introduction
2. Installation
3. Use & Caution

Introduction

'Optical Mouse' is a high-technology product which uses the 'Optical Engine', the cutting-edge mouse technology and can be operated perfectly on mouse pad, as well as on the rounded surface.

It is also very comfortable to use because it is designed by asymmetric architecture so as to do no harm to the hands and the shoulders of the user.

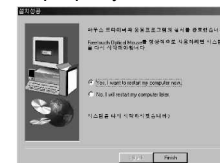
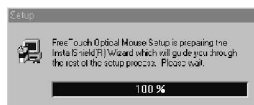


Connecting the Mouse

1. Make sure that your computer is turned off.
2. Connect the mouse connector to the computer's PS/2 mouse port.
3. Turn on the computer and install the software.

Installing the Software

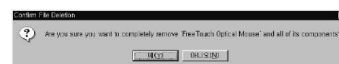
1. Start your computer and Windows, and then insert the setup diskette included in the box into A: drive. Execute the "SETUP.EXE".



4. Remove the setup diskette from A: drive and restart the system for setting the hardware properly.

Uninstalling the Software

1. Click the Start button and click [Control Panel] menu and double click the [Add/Remove Programs] icon. In the installed program list, select the 'Freetouch Optical Mouse' item and click [Add/Remove] button.



2. Click [YES] to uninstall the software.

3. Click [OK] to finish the uninstallation.

Made in Korea

