

# PRINICS C210

## Instant Photo Printer combo

### User Guide

www.kodakphotoprinter.com



#### English

##### Smartphone App Installation

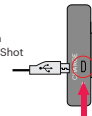
- 1) Go to Play Store or App Store in smartphone.
- 2) Search "Kodak Instant Printer"
- 3) Install it to your smartphone.

##### Bluetooth Connection

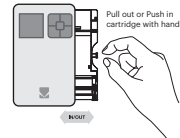
- 1) Turn on Bluetooth in your smartphone.
- 2) Turn on Instant 2 in 1 Camera.
- 3) Go to Bluetooth setting in your smartphone and select "KODAK instant-XXXX" ("XXXX" are 4 digits combination of numbers and letters.)

##### Before Start

- 1) Mini Shot has built-in battery. Charge Mini Shot before using it.



- 2) How to change cartridge.



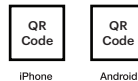
##### Take a Photo

- 1) Turn on Mini Shot by pressing power button.
- 2) Press shutter button to take the photo after positioning the subject in LCD screen.

##### Power, Shutter and Active Status

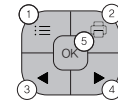


- Shutter Button : Take a Photo
- Power ON : White / Power OFF(2Sec) : Off / Printing : White flickering / F.W Upgrade : Pink flickering / No Cartridge, Error : Red Flickering / Waiting, Cooling : White
- Charge
- Charging : Red / Charging Complete : Green
- Connecting : Blue Blink / Bluetooth Complete : Green



iPhone Android

##### Control Panel



- 1 Menu: You can select Borders, Filters, Flash or Language
- 2 Print : Print image on LCD.
- 3 4 Arrow Button: You can go to left or right in the menu.
- 5 OK: Confirm the setting or selected menu.

##### Menu

- 1) Border : You can select border of printed image.
  - 2) Filter : You can select filters when you take the photo
  - 3) Flash : You can set Flash Auto or Off.
  - 4) Language : You can set language
- \* Taken photos are deleted when the camera is powered OFF.

##### Note

- \* Photo Paper will go in and out 4 times (Yellow, Magenta, Cyan, Overcoating). Do not touch the paper during printing process for best image quality
- \* Do not pull paper out by force during printing.
- \* Do not place an object in front of the paper exit slot.
- \* Use the latest application for best print quality. Check the latest app version from Google Play Store and Apple App Store.
- \* Printer has built-in battery. Charge the printer before using.
- \* Handle with care during charging to prevent electric shock.
- \* Do not disassemble or deform.
- \* Avoid too high or low temperature or humidity.
- \* The higher resolution the image has, the higher quality the printed photo has. Recommended image size is 1280\*2448 pixel.
- \* Operating Temperature : 0-40°C (32-104 °F)

##### Troubleshooting

Symptom	Cause / Solution
Paper Jam	Power off and Power On again. Paper will be automatically ejected. If not, please contact customer service.
Image quality is not good.	Print quality could be less if your photo source has low resolution. Over 1280 x 2448 pixel is recommended for best image quality.
Mini Shot is not responding	Press Reset button with sharp tool like pin.

##### Spec

Dimension	134.6(W) x 79.2(H) x 26.4(D) mm
Camera	10 Mega Pixel
Connectivity	Bluetooth
Color	2 Colors; White, Kodak Yellow
Cartridge	All-in-One 4Pass Cartridge
Paper Size	54 x 86 mm(Credit Card Size)
Print Technology	4Pass
Smart Phone Printing	○
LCD Viewfinder	○
Paper Capacity	20, 30, 50 Sheet
LCD UI Function	Print, Photo Frame, Brightness, Filter, Reprint, Flash

##### FCC (Federal Communications Commission)



This device complies with part 15 of the FCC Rules. Operation is subject to the following two conditions:  
(1) This device may not cause harmful interference, and  
(2) This device must accept any interference received, including interference that may cause undesired operation.  
Caution: Any changes or modifications to the equipment not expressly approved by the party responsible for compliance could void user's authority to operate the equipment.

This equipment complies with FCC radiation exposure limits set forth for an uncontrolled environment.  
This appliance and its antenna must not be co-located or operation in conjunction with any other antenna or transmitter.

This equipment has been tested and found to comply with the limits for a Class B digital device, pursuant to part 15 of the FCC Rules. These limits are designed to provide reasonable protection against harmful interference in a residential installation. This equipment generates, uses and can radiate radio frequency energy and, if not installed and used in accordance with the instructions, may cause harmful interference to radio communications. However, there is no guarantee that interference will not occur in a particular installation. If this equipment does cause harmful interference to radio or television reception, which can be determined by turning the equipment off and on, the user is encouraged to correct the interference by one of the following measures:

- Reorient or relocate the receiving antenna.
- Increase the separation between the equipment and receiver.
- Connect the equipment into an outlet on a circuit different from which the receiver is connected.
- Consult the dealer or an experienced radio/TV technician for help.

The Kodak trademark, logo and trade dress are used under license from Kodak.  
www.kodakphotoprinter.com  
Copyright © Prinics., Ltd