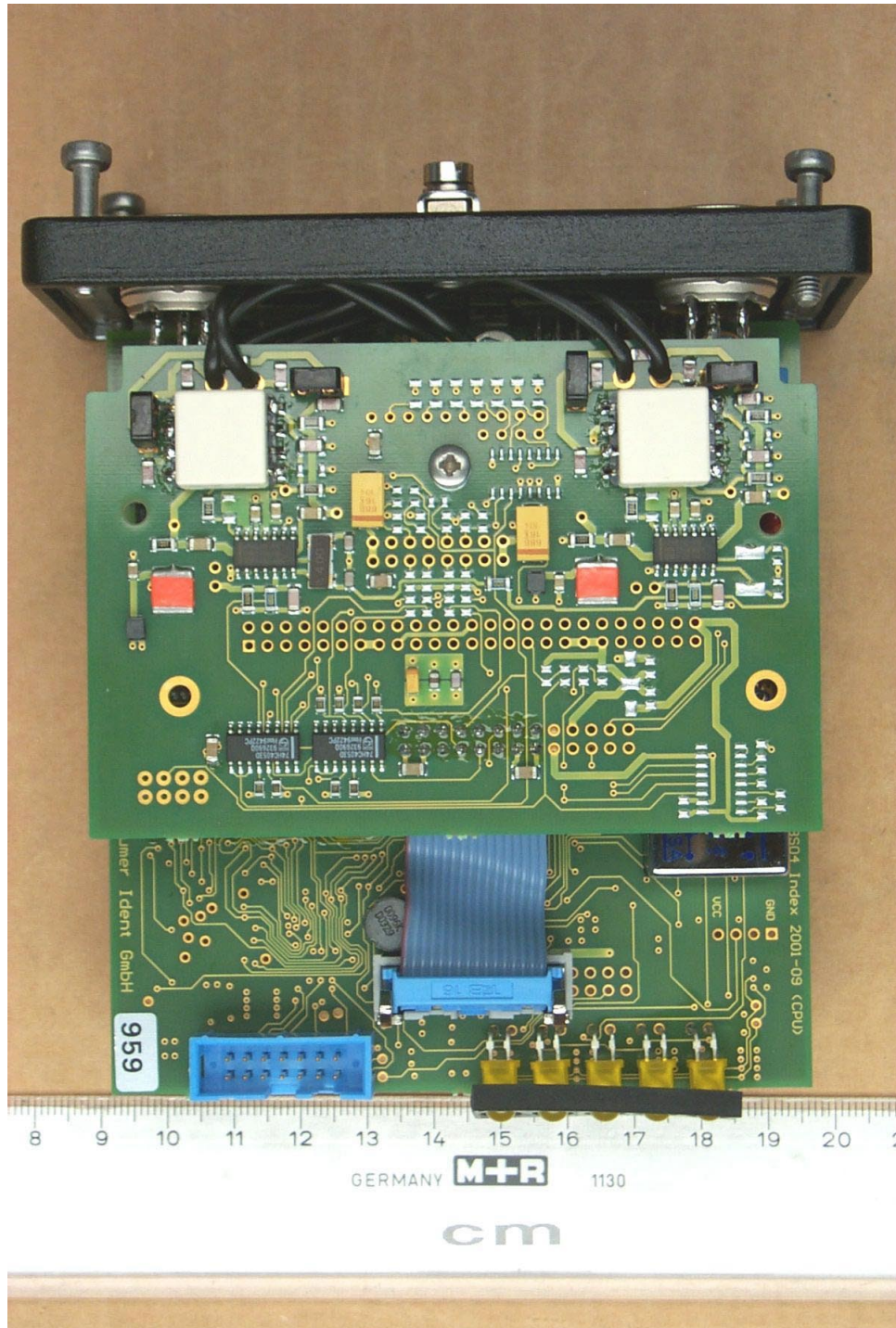
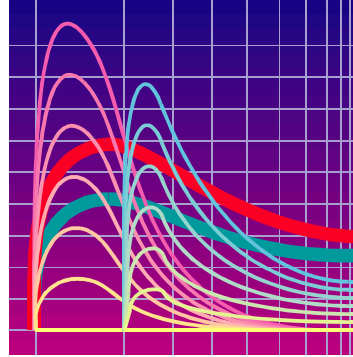


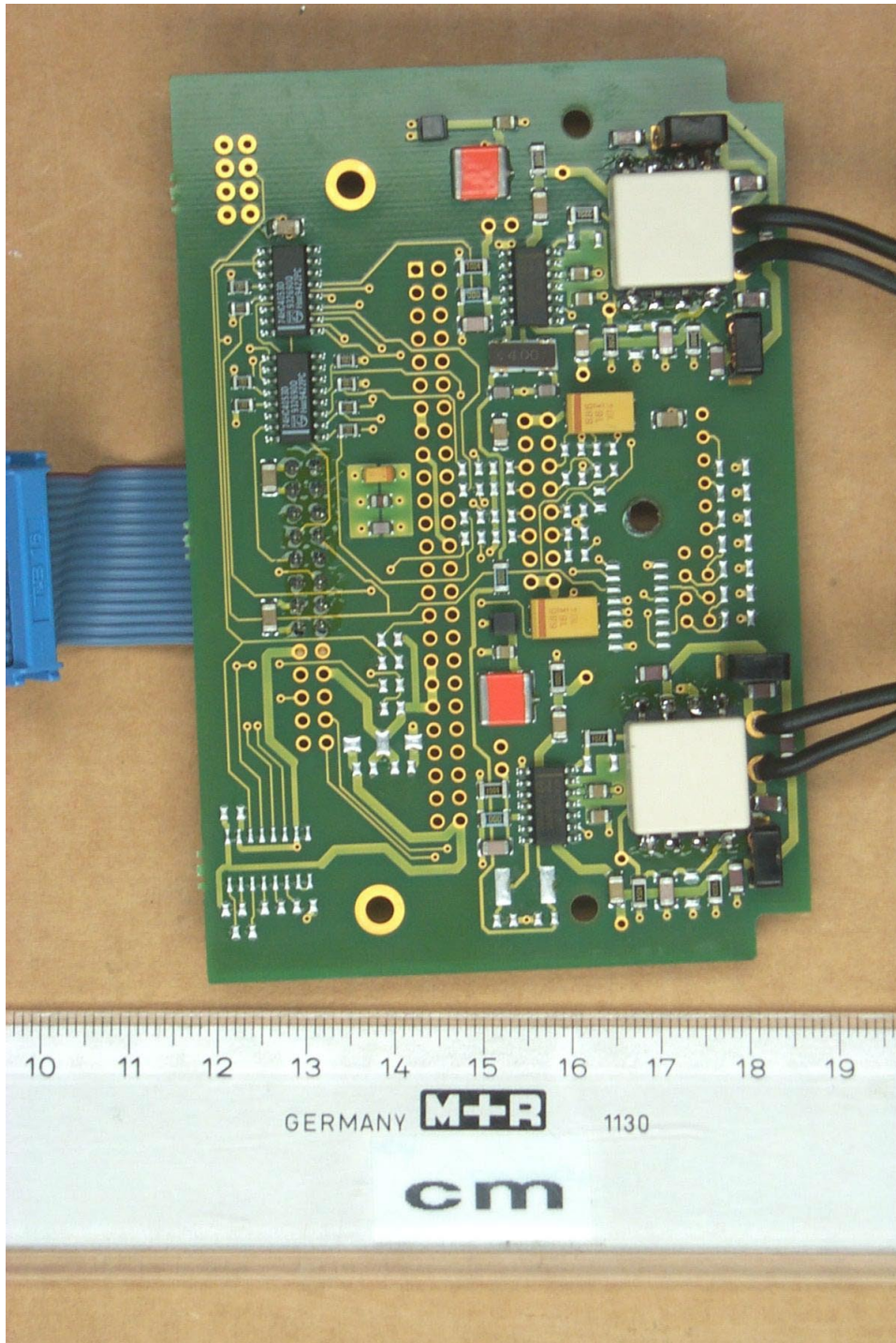
Annex C of test report R20382 Revision 01 Edition 1
EUT: OISL 77LA04/2 - SER
Manufacturer: Baumer Ident GmbH



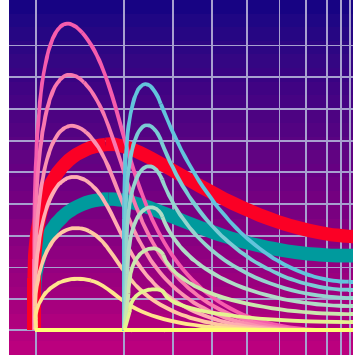
20382_10.jpg OISL 77LA04/2-SER internal view



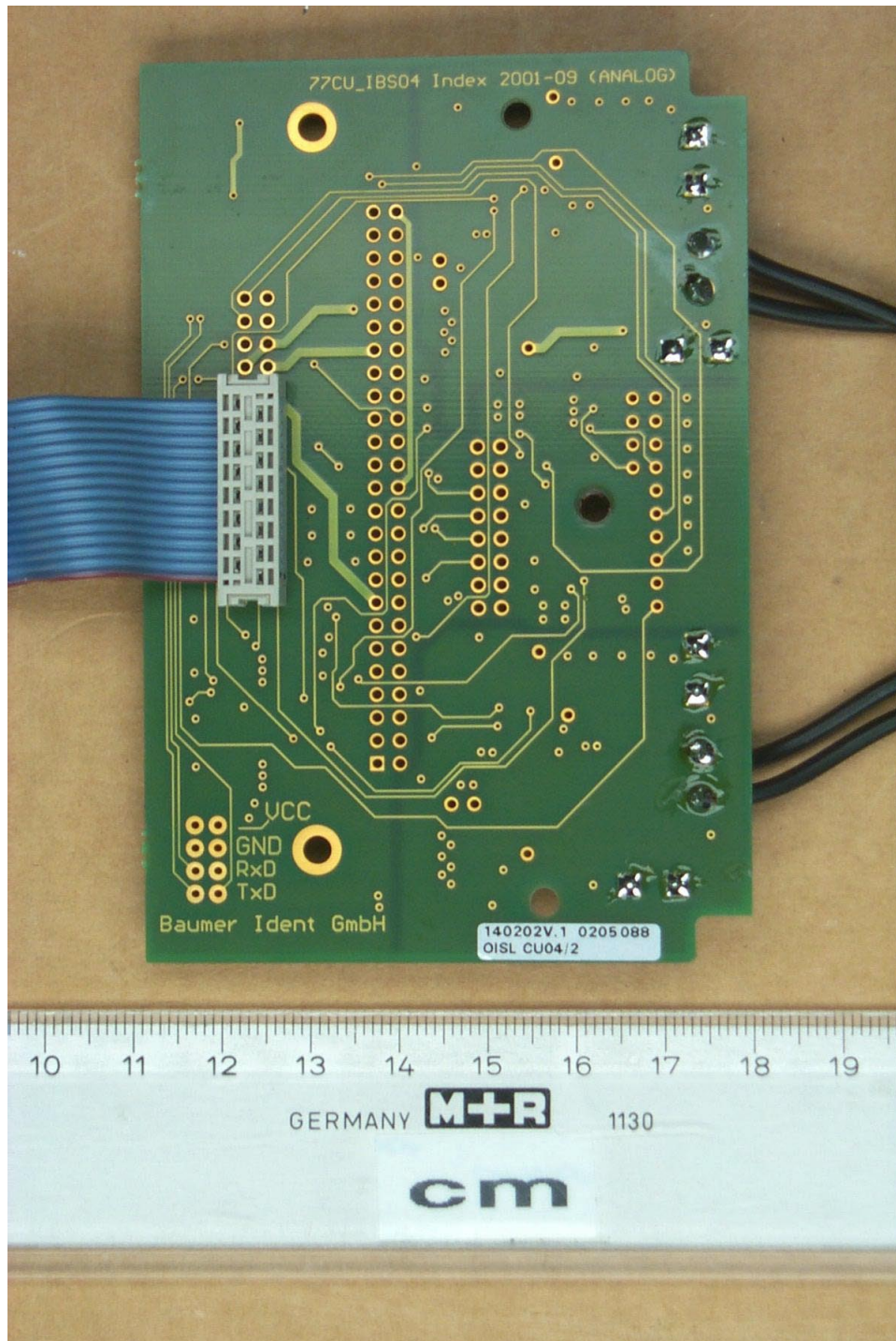
Annex C of test report R20382 Revision 01 Edition 1
EUT: OISL 77LA04/2 - SER
Manufacturer: Baumer Ident GmbH



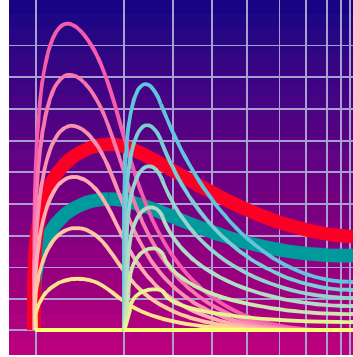
20382_9.jpg OISL 77LA04/2-SER analogue board, top view



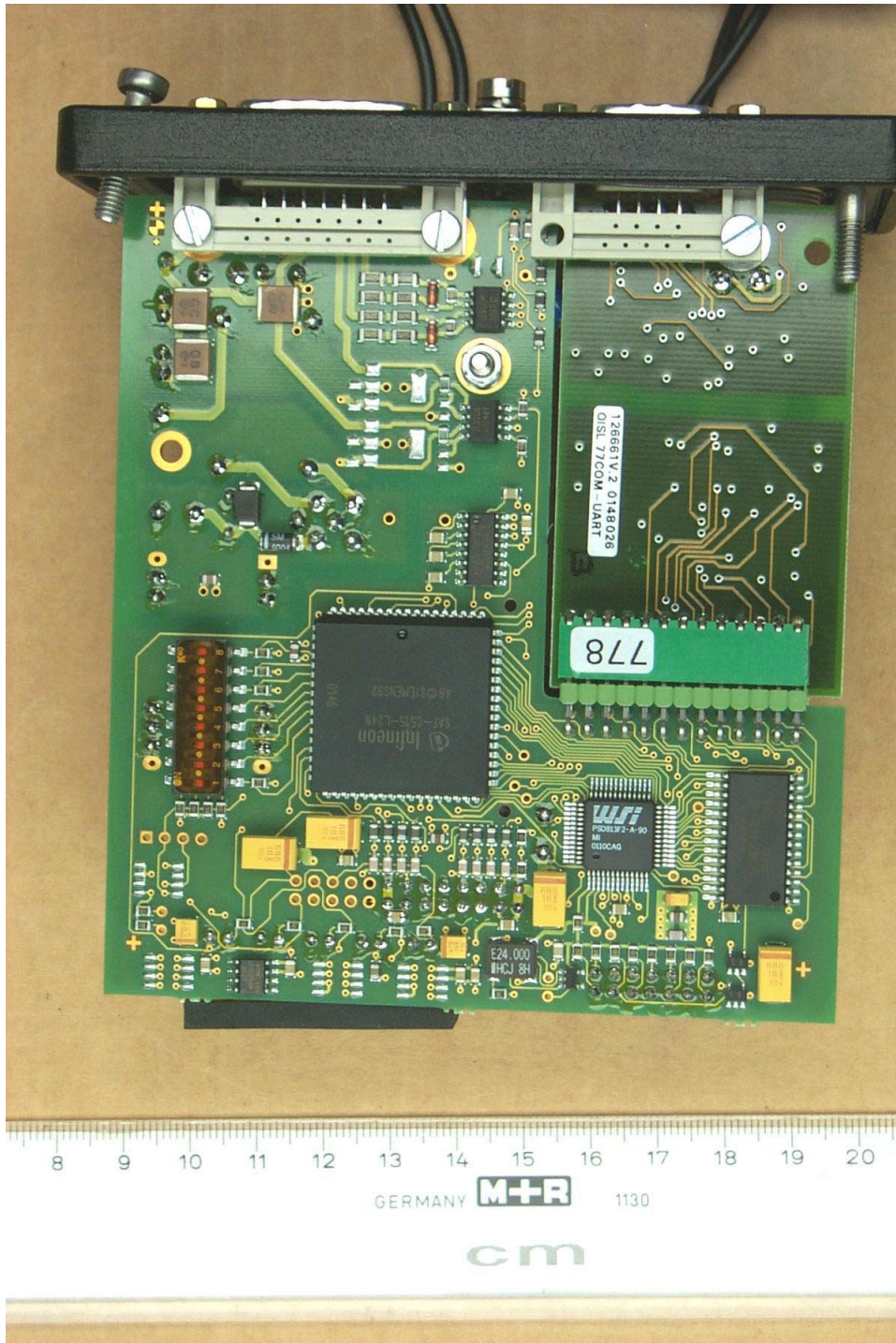
Annex C of test report R20382 Revision 01 Edition 1
EUT: OISL 77LA04/2 - SER
Manufacturer: Baumer Ident GmbH



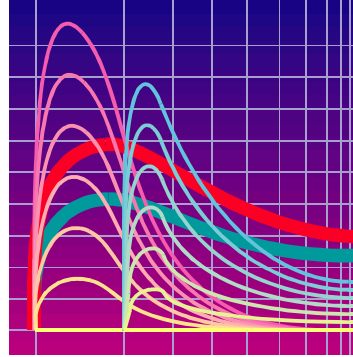
20382_6.jpg OISL 77LA04/2-SER analogue board, bottom view



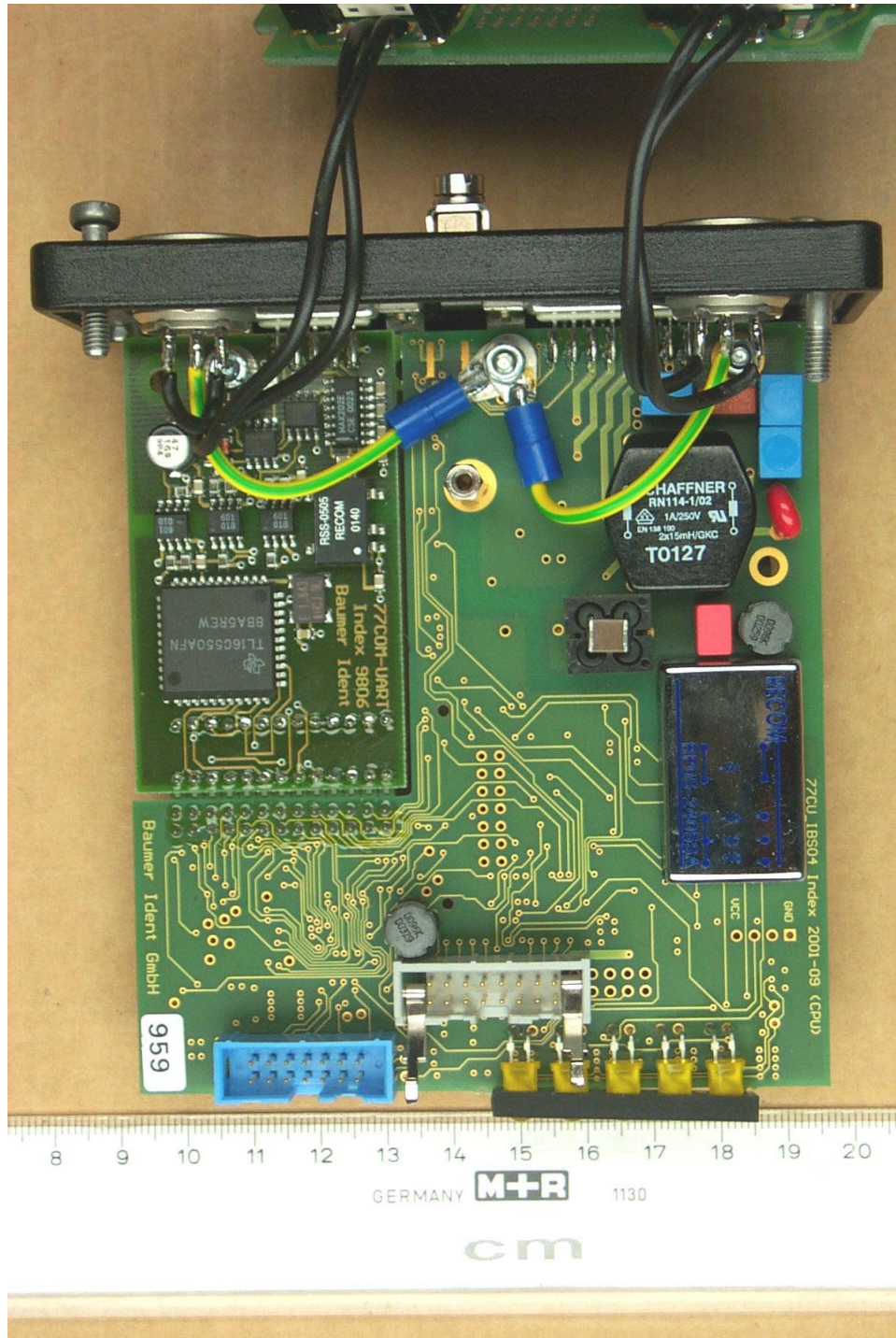
Annex C of test report R20382 Revision 01 Edition 1
EUT: OISL 77LA04/2 - SER
Manufacturer: Baumer Ident GmbH



20382_7.jpg OISL 77LA04/2-SER COM and CPU board, top view



Annex C of test report R20382 Revision 01 Edition 1
EUT: OISL 77LA04/2 - SER
Manufacturer: Baumer Ident GmbH



20382_11.jpg OISL 77LA04/2-SER COM and CPU board, bottom view