



Global Product Certification
EMC-EMF Safety Approvals

Melbourne 176 Harrick Road Keilor Park, Vic 3042 Tel: +61 3 9365 1000	Sydney Unit 3/87 Station Road Seven Hills, NSW 2147 Tel: +61 2 9624 2777
Email: emc-general@emctech.com.au Web: www.emctech.com.au	

APPENDIX B EXTERNAL IDENTIFICATION PHOTOGRAPHS

Test Report Number: S220305-5

FCC ID: PN2-PRO1

Tested For: Adherium (NZ) Ltd
Device under Test: Hailie Sensor
Model Number: NF0110

Issue Date: 10 November 2022

EMC Technologies Pty Ltd reports apply only to the specific samples tested under stated test conditions. It is the manufacturer's responsibility to assure that additional production units of this model are manufactured with identical electrical and mechanical components. EMC Technologies Pty Ltd shall have no liability for any deductions, inferences or generalisations drawn by the client or others from EMC Technologies Pty Ltd issued reports. This report shall not be used to claim, constitute or imply product endorsement by EMC Technologies Pty Ltd.



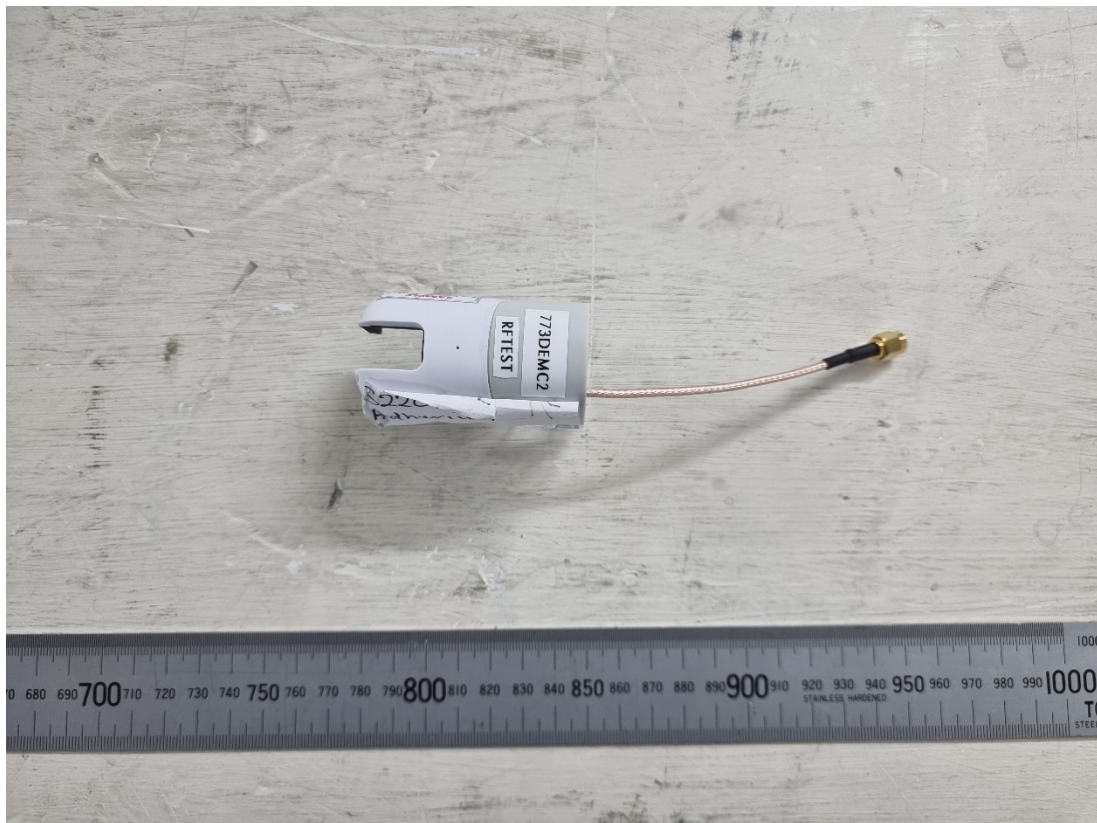
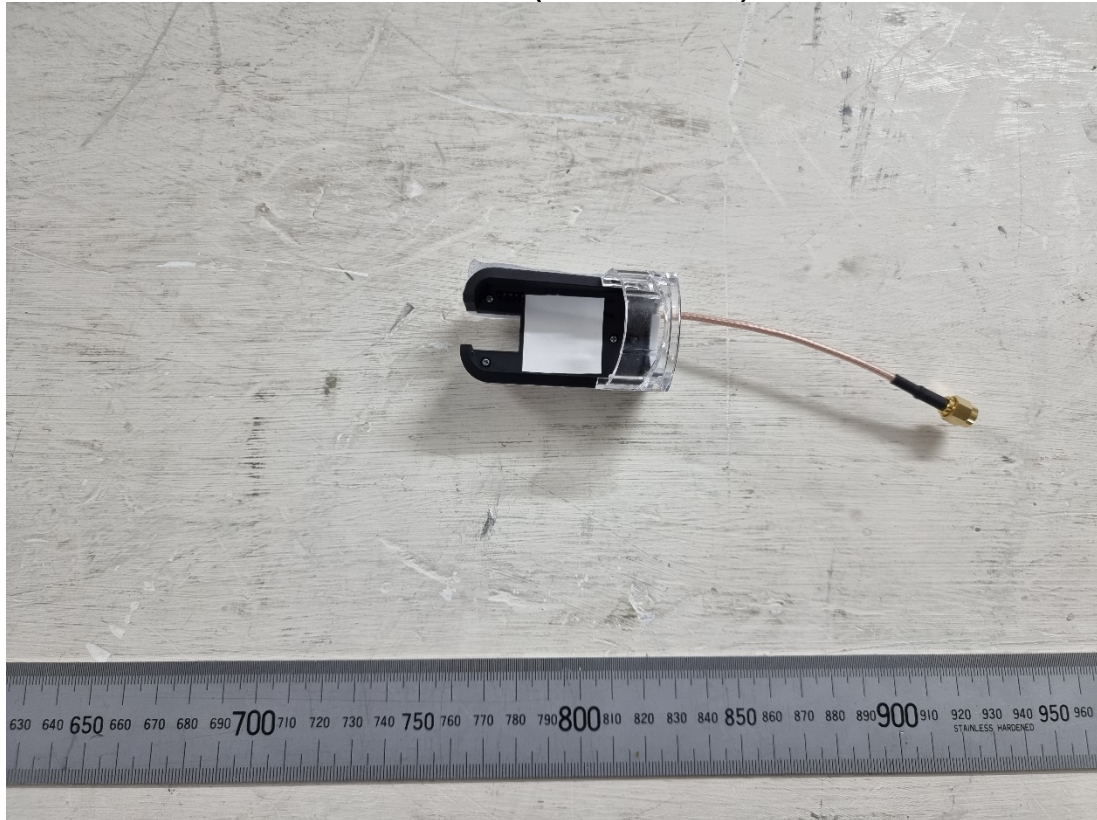
Accredited for compliance with ISO/IEC 17025..
NATA is a signatory to the ILAC Mutual Recognition Arrangement for the mutual recognition of the equivalence of testing, calibration, inspection and proficiency testing scheme provider reports.
This document may only be reproduced in full with exception of Certificate of Compliance

REVISION TABLE

Version	Sec/Para Changed	Change Made	Date
1		Initial Issue of Document	10/11/2022

APPENDIX B1 EXTERNAL IDENTIFICATION PHOTOGRAPHS

EUT External (Conducted Unit)



Accreditation No.5292

Accredited for compliance with ISO/IEC 17025..
NATA is a signatory to the ILAC Mutual Recognition Arrangement for the mutual recognition of the equivalence of testing, calibration, inspection and proficiency testing scheme provider reports.
This document may only be reproduced in full with exception of Certificate of Compliance

APPENDIX B2 EXTERNAL IDENTIFICATION PHOTOGRAPHS

EUT External (Radiated Unit)



Accredited for compliance with ISO/IEC 17025..
NATA is a signatory to the ILAC Mutual Recognition Arrangement for the mutual recognition of the equivalence of testing, calibration, inspection and proficiency testing scheme provider reports.
This document may only be reproduced in full with exception of Certificate of Compliance

APPENDIX B3 Photograph of Auxiliary Equipment

Dongle



EMCT Supplied Laptop



-END OF REPORT-