

DREAM.

User's Manual

TABLE OF CONTENTS

1. Hardware Installation

2. Drive Installation

A. Windows 95 / 98 / ME

B. Windows 2000 / XP

3. TV-OUT Function Instruction

4. Digital LCD Monitor (DVI-OUT)

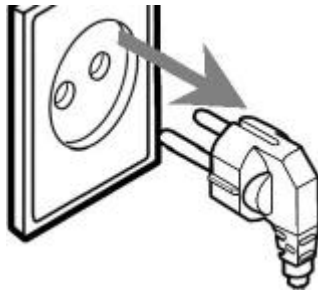
5. FAQ

System Requirements

- Intel Pentium III 350MHz or higher version CPU
(Intel Pentium III, Intel Celeron, AMD Athlon, AMD Duron..)
- Windows 98 / ME, Windows 2000 / XP,
- Any Motherboard with AGP 2.0 or higher
- CDROM & Mouse required

Warning

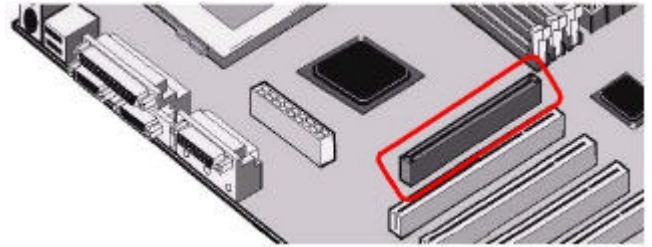
Before you install Hardware, you must make sure that the computer plug is off for your safety from a sudden electricity impulse.



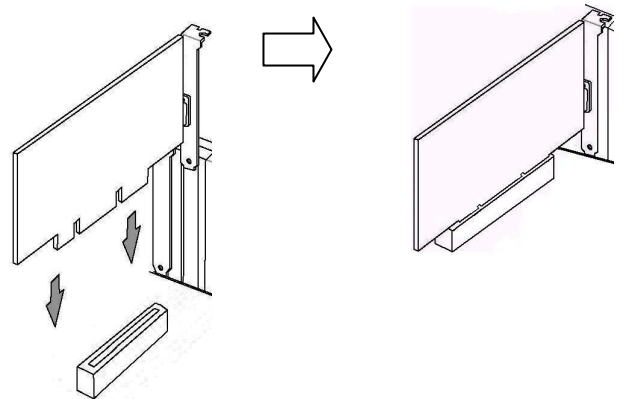
1. Hardware Installation

1. Turn off your computer, remove the computer case, and check out the location of AGP Slot.

AGP Slot (Brown color) is placed in the middle of M/B.



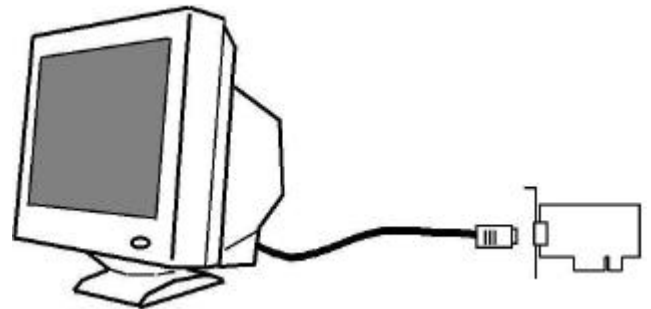
2. Remove your old graphics card, and install your new Graphic cards.



Caution!!

AGP Slot's connection part is different with general **PCI**. It is double structured. You must make sure that the card is placed to the end. If the card is not placed in the **slot**, the system will not be working at all.

3. Align and secure the mounting bracket of the card to the computer and replace the computer case. Connect the monitor cable to graphic card connector.



4. Turn on your computer and follow up the instruction to install software.

2. Drive installation

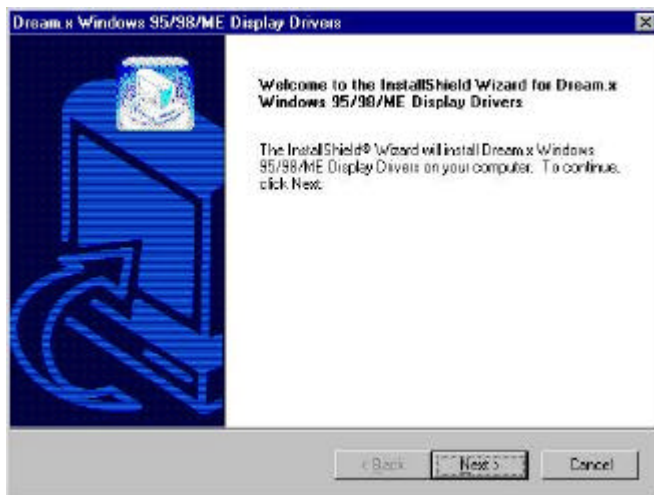
A. Windows 95 / 98 / ME

1. After you have inserted the CD Drive, the following windows will appear. You don't see the InstallShield Wizard, Click **A u t o r u n** to run the `D r e a m _ v x . x (E :)` from E: drive on My Computer

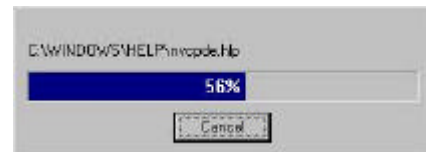
`Dream_vx.x` signifies CD-ROM and `vx.x` signifies CD Version. (Example: v2.0)



2. Click **N e x t** to next step.



3. The installation process will be display.



4. After the installation you will be asked to restart your computer. Click **F i n i s h** to restart your system.

5. When you restart your system, the installation is finished.

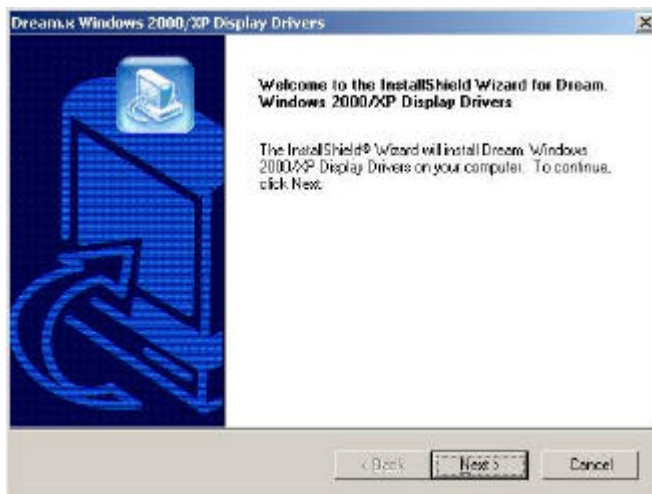
B. Windows 2000 / XP

1. After you have inserted the CD Drive, the following windows will appear. If you don't see the InstallShield Wizard, Click **Auto run** to run the `Dream_vx.x (E:)` from E: drive on My Computer.

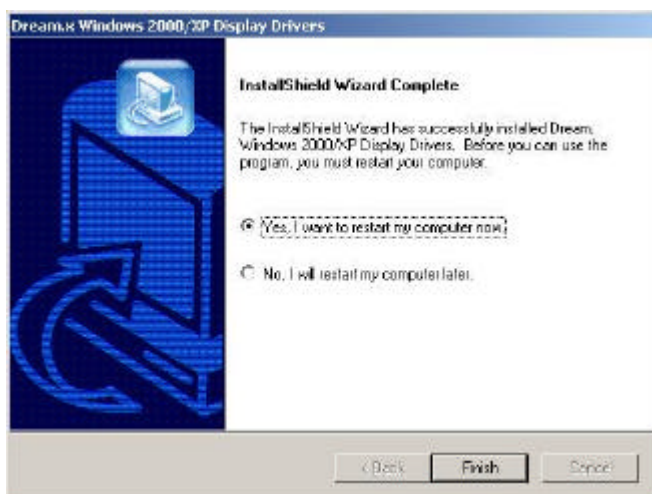
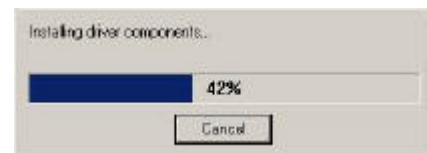
`Dream_vx.x` signifies CD-ROM and `vx.x` signifies CD Version. (Example: v2.0)



2. Click “**N e x t**” to next step.



3. The installation process will be display.



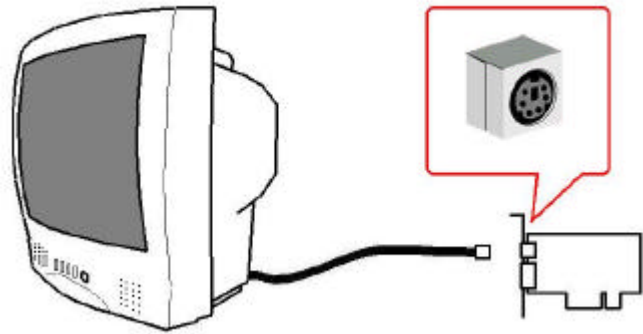
4. After the installation you will be asked to restart your computer. Click **F i n i s h** to restart your system.

5. When you restart your system, the installation is finished.

3. TV-OUT Function Instructions

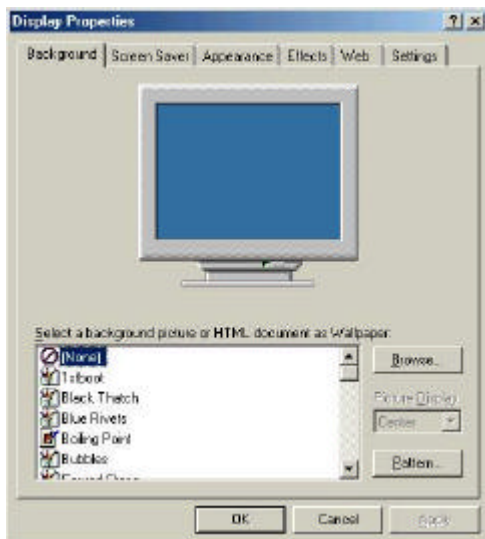
DREAM Series has TV-out option to enjoy playing game and Movies on the TV. Connect Cable and TV ' s Video connector, and follow the instruction below.

1. Connect the monitor cable to the TV-out connector of the card.



2. Select Start Setup Control Panel Display to change LCD Monitor setting.
After that select Display Properties, Select Settings Advanced Device Selection to set your monitor.

* For Windows XP, Select Start Control Panel Appearance and Themes Display Settings Advanced Device Selection to set your monitor.



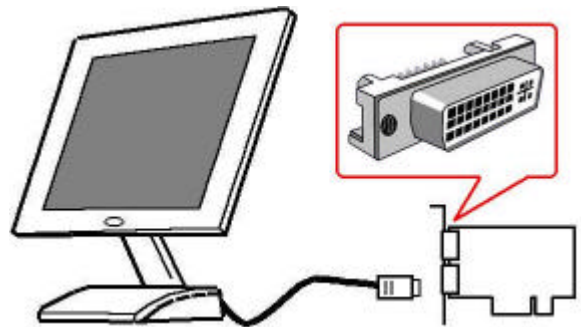
3. Select TV on the Select the output device on which to display Windows and click Apply.



4. Digital Flat Panel Instructions (DVI-OUT)

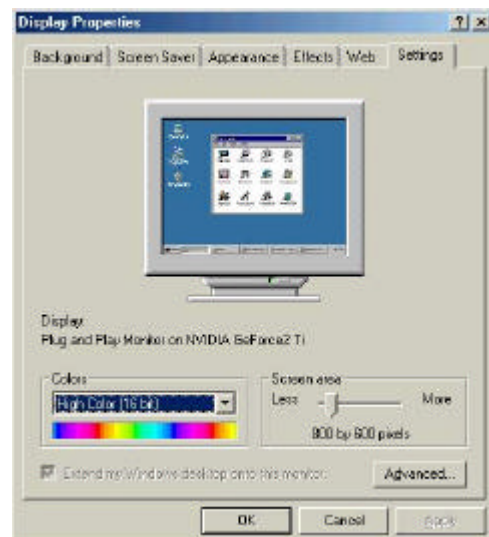
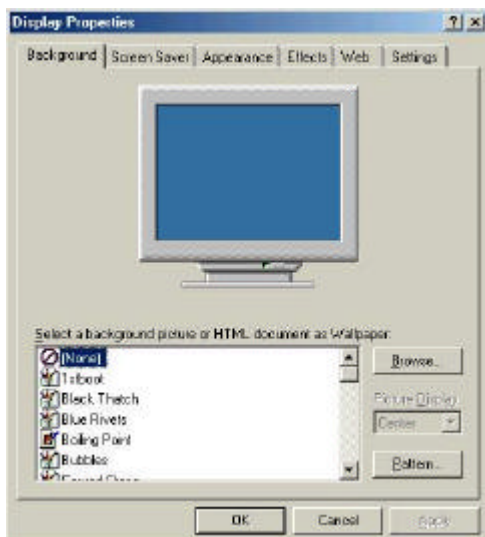
DREAM Series, which has DVI-out option, can be enjoyed on the Digital Flat Panel (TFT -LCD Monitor). Connect Cable TV 's Video connector, and follow the instruction below. When using DVI connector through LCD Monitor, your monitor displays the final digital image signal from graphic core without signal conversion. You can enjoy brilliant color and vivid detail.

1. Connect the Monitor cable to DVI port of the card.

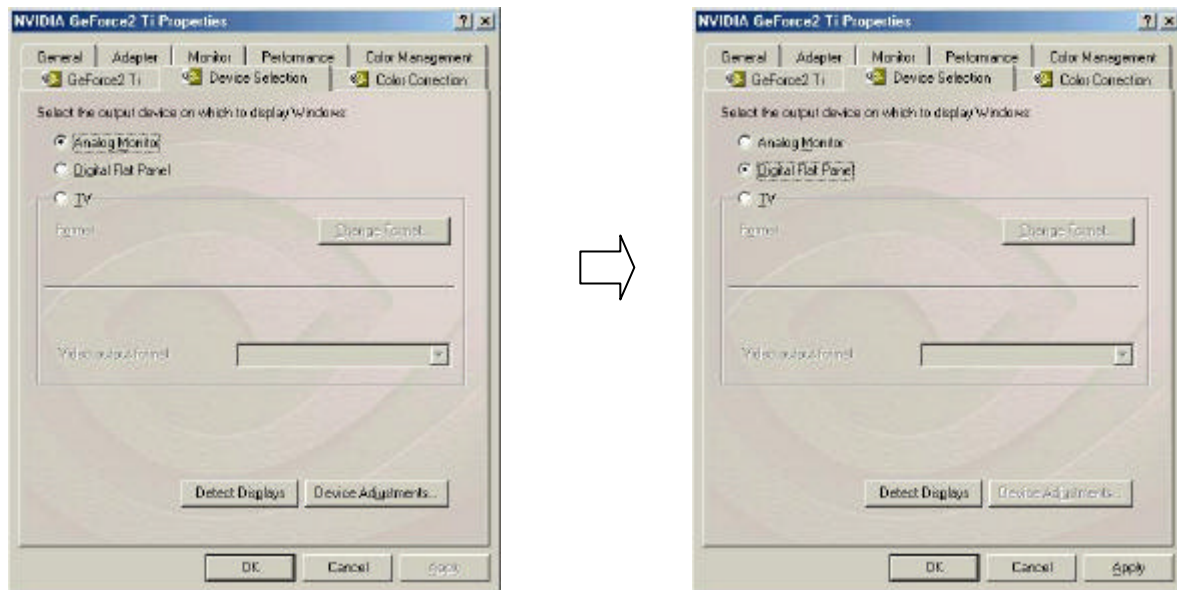


2. Select Start Setup Control Panel Display to change LCD Monitor setting.
After that select Display Properties, Select Settings Advanced Device Selection to set your monitor.

* For Windows XP, Select Start Control Panel Appearance and Themes Display Settings Advanced Device Selection to set your monitor.



3. Select Digital Flat Panel on Select the output device on which to display Windows and click Apply.





FCC Requirement

This device has been certified to comply with the limits for a Class B computing device pursuant to Subpart J of Part 15 of the FCC Rules. See instructions if interference to radio reception is suspected.

WARNING: This equipment generates and uses radio frequency energy and, if not installed or used properly, that is, in strict accordance with the manufacturer's instructions, may cause interference to radio or television reception.

It has been tested and found to comply with the limits for a Class B compliant device in accordance with the specifications in Subpart J of Part 15 of FCC Rules, which are designed to provide reasonable protection against such interference in a residential installation.

However, there is no guarantee that interference will not occur in a particular installation.

If this equipment does cause interference to radio or television reception, which can be determined by turning the equipment off and on, the user is encouraged to try to correct the interference by one or more of the following measures:

- Reorient the receiving antenna
- Relocate the computer away from the receiver
- Move the computer away from the receiver
- Plug the computer into a different outlet so that the computer and the receiver are on different branch circuits
- Ensure that the card's mounting screws, attachment connector screws, and ground wires are tightly secured
- Ensure that slot covers are installed in all unused slots

If necessary, consult your dealer, service representative, or an experienced radio/television Technician for additional suggestions.

The manufacturer is not responsible for any radio or TV interference caused by unauthorized modifications to this equipment. It is the responsibility of the user to correct such interference.

The user may find the following booklet prepared by the Federal Communications Commission helpful:

How to Identify and Resolve Radio-TV Interference Problems.

This booklet is available from the Government Printing Office, Washington, D.C. 20402, Stock No. 004-000-00345-4.

NOTE: You must use shielded interface cables with a ferrite bead in order to maintain compliance with the limits for a Class B device.

CAUTION:	CHANGES OR MODIFICATIONS NOT EXPRESSLY APPROVED BY THE PARTY RESPONSIBLE FOR COMPLIANCE COULD VOID THE USER'S AUTHORITY TO OPERATE THE EQUIPMENT
-----------------	--

Notice

The information in this document is subject to change in order to improve reliability, design, or function without prior notice and does not represent a commitment on the part of this company.

In no event will we be liable for direct, indirect, special, incidental, or consequential damages arising out of the use or the inability to use the product or documentation, even if advised of the possibility of such damages.

No part of this reference manual may be reproduced or transmitted in any form or by any means without the prior written permission of this company.

2000

Trademark Acknowledgements

All brand names and trademarks are the property of their owners.

Limited Warranty

Our company warrants this product against defects in materials and workmanship for a period of three (3) year from the date of purchase. During the warranty period, a product determined by us to be defective in form or function will be repaired or at our option, to be replaced at no charge. This warranty does not apply if the product has been damaged by accident, abuse, misuse, or as a result of service or modification other than by us.

This warranty is in lieu of any other warranty expressed or implied. In no event shall we be held liable for incidental or consequential damages, such as lost revenue or lost business opportunities arising from the purchase of a this product.