

2. After Selecting *Search for the best driver for your device(Recommended)* from the following dialogue box, insert the Support CD into your CD-ROM drive. From the *Specify the Location:*, select *E:\VGA\DRIVER\GeForce2 MX/GTS\Win9X* , click *Next*. In this case, E:\ means CD-ROM drive.



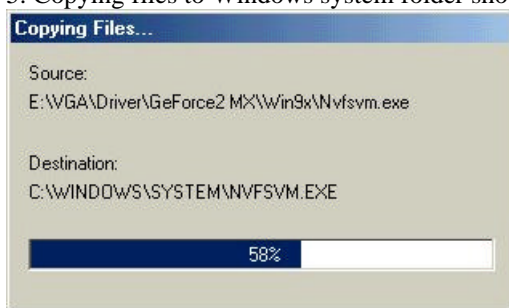
3. Select *The updated software [Recommended]* InsideTNC GeForce2 MX/GTS and click *Next*.



4. When *Windows driver file search for the device: InsideTNC GeForce2 MX/GTS* appears, click *Next*.



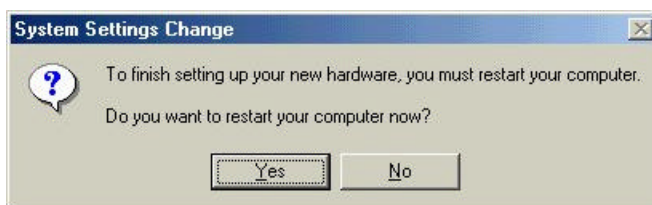
5. Copying files to Windows system folder should be completed. It may take a few seconds.



6. Click *Finish* to complete setup.

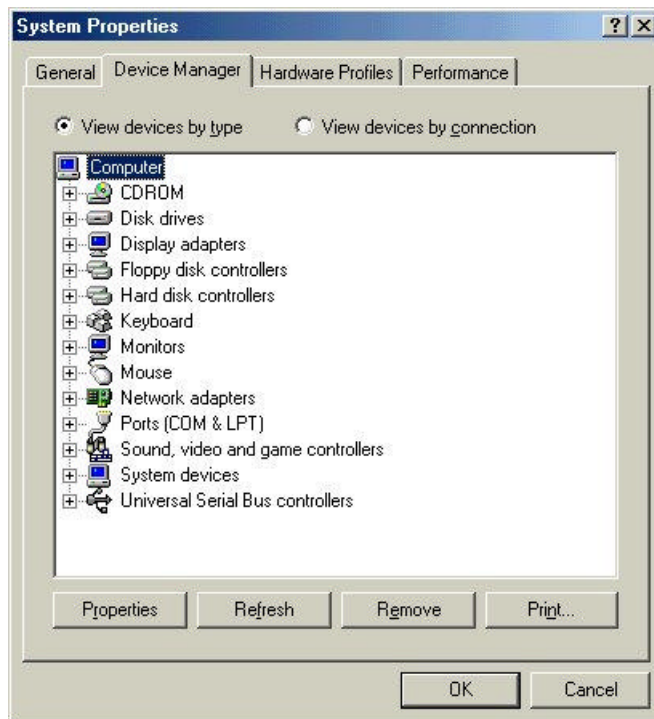


7. Click *Yes* to restart your computer.



## Method II. Do It Yourself

1. In order to install the driver of Inside's GeForce2 MX/GTS by yourself, Select *Start > Setting > Control Panel > System Properties > Device manager > Display adapters > Standard PCI Graphics Adapters* and click *Properties* in Windows95/98/ME.



2. From *Standard PCI Graphics Adapter [VGA] Properties* > *Driver*, click *Update Driver...*



3. Select *Specify the location of the driver [Advanced]* and click *Next*.



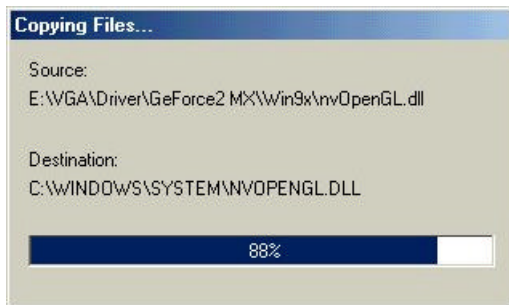
4. From the select Search for a better driver than the one your device is using now. [Recommended] and then check the Specify a location *E:\VGA\DRIVER\GeForce2 MX/GTS\Win9X*. and then click *Next*. In this case, *E: \* means *CD-Rom drive*.



5. When Windows driver file search for the device: *InsideTNC GeForce2 MX* appears, click *Next*.



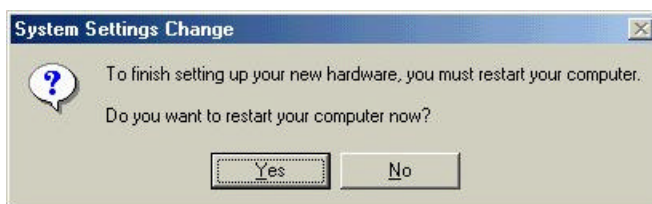
6. Copying files to Windows system folder should be completed. It may take a few seconds.



7. Click *Finish* to complete setup.



8. . Click *Yes* to restart your computer.



## 4. Troubleshooting

The graphic board users queried as follow:

**Question 1 :** ‘Version Crash’ message appeared and Windows asked me “Do you save ex-file?” during installing driver. How can I answer to solve it?

**Answer 1 :** When we change the graphic board, the same file name exists in the System folder in Windows. In this case, selecting *No* is recommended.

**Question 2 :** Even driver installation was completed, 16 color was selected only. When you select 256color at a minimum refresh rate, computer was restarted and the message refresh rate was not fix to the system appears on the screen.

**Answer 2 :** It’s the error message when the system files crashed each others or compulsory driver installation was done. In this case, from Control Panel > System > Device Control > Display Adapter, selected Device Driver should be selected to Standard Display Adapter and then reinstall Driver. Then, you can select 256 Color to 16bit High Color and 32bit True Color.

**Question 3 :** Even my monitor size is 17inch, I can not select over 800×600 (Resolution Rate) from a display setting.

**Answer 3 :** You can change the driver with Support Driver Disk which you got from Monitor Producer when you bought it or you can select ‘plug & play monitor’ then you can use the maximum of Resolution Rate. See Appendix- Table 1-1 , for the a list of compatible resolutions.

**Question 4 :** My monitor is either blank, or the display image is distorted or scrambled.

**Answer 4 :** It’s caused by the low refresh rate. Select to the maximum refresh rate supported by the monitor.

**Question 5 :** As you play games, the screen turns to Windows immediately .

**Answer 5 :** It depends on the game. Upgrade the DirectX to the newest version or install the patch file that the game producers give, and then you can play game.

**Question 6 :** Playing 3D games causes system down.

**Answer 6 :** Check the heat condition CPU or reinstall the Windows.



## APPENDIX

**\*Table 1-1. Windows 95/98ME Resolution Rate & Refresh Rate- 32MB**

Refresh Rate Resolution Rate	256	65K	16M
640*480	60, 72, 75, 85, 100, 120, 170, 200Hz	60, 72, 75, 85, 100, 120, 170, 200Hz	60, 72, 75, 85, 100, 120, 170, 200Hz
800*600	60, 72, 75, 85, 100, 120Hz	60, 72, 75, 85, 100, 120Hz	60, 72, 75, 85, 100, 120Hz
1024*768	60, 72, 75, 85, 100, 120Hz	60, 72, 75, 85, 100, 120Hz	60, 72, 75, 85, 100, 120Hz
1152*864	60, 72, 75, 85, 100, 120Hz	60, 72, 75, 85, 100, 120Hz	60, 72, 75, 85, 100, 120Hz
1280*1024	60, 72, 75, 85, 100, 120Hz	60, 72, 75, 85, 100, 120Hz	60, 72, 75, 85, 100Hz
1600*1200	60, 72, 75, 85Hz	60, 72, 75, 85Hz	60, 72, 75Hz

**\* Table 1-2. Windows 95/98 ME 3D Display Mode - 32MB**

Resolution Rate	Double – Buffer	Double – Buffer + Z-Buffer
640*480	16, 32	16, 32
800*600	16, 32	16, 32
1024*768	16, 32	16, 32
1152*864	16, 32	16, 32
1280*1024	16, 32	16, 32
1600*1200	16, 32	16, 32