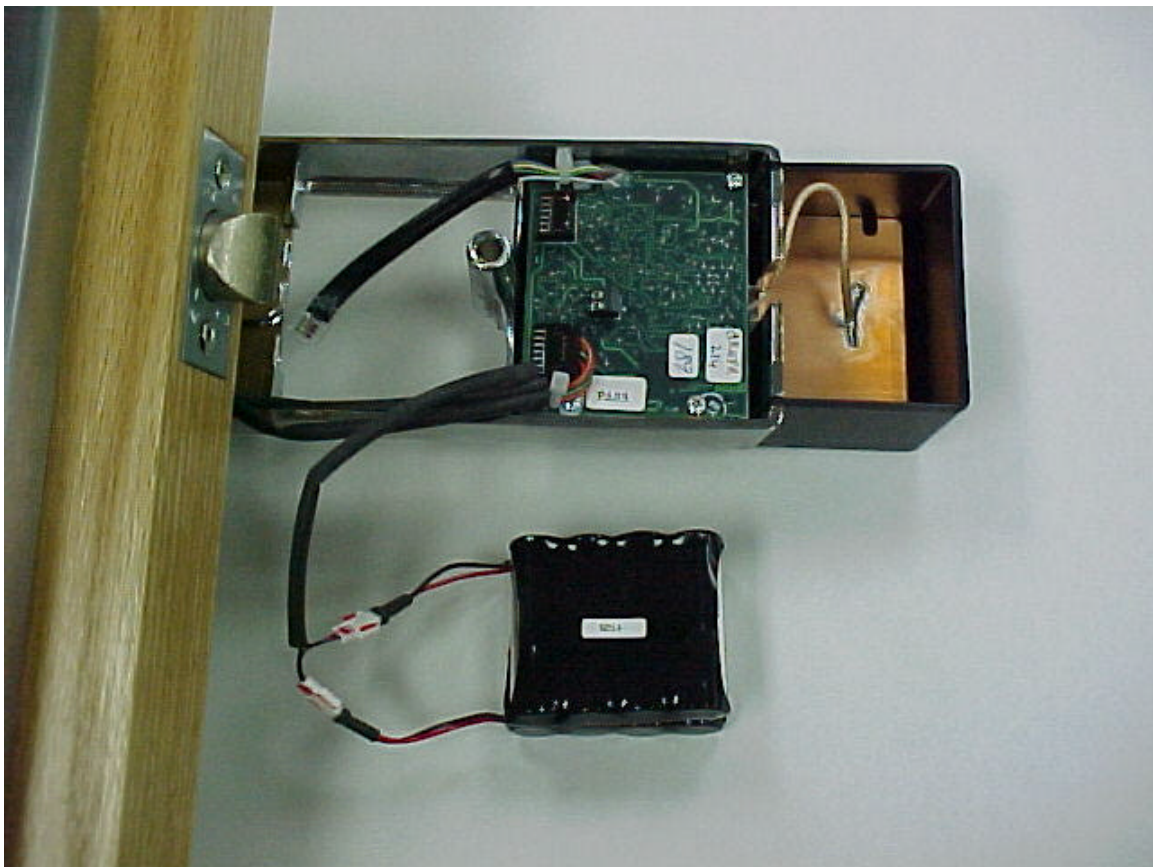


**Recognition Source, LLC
FCC ID#: PM7-IRL2001**

Photo 6

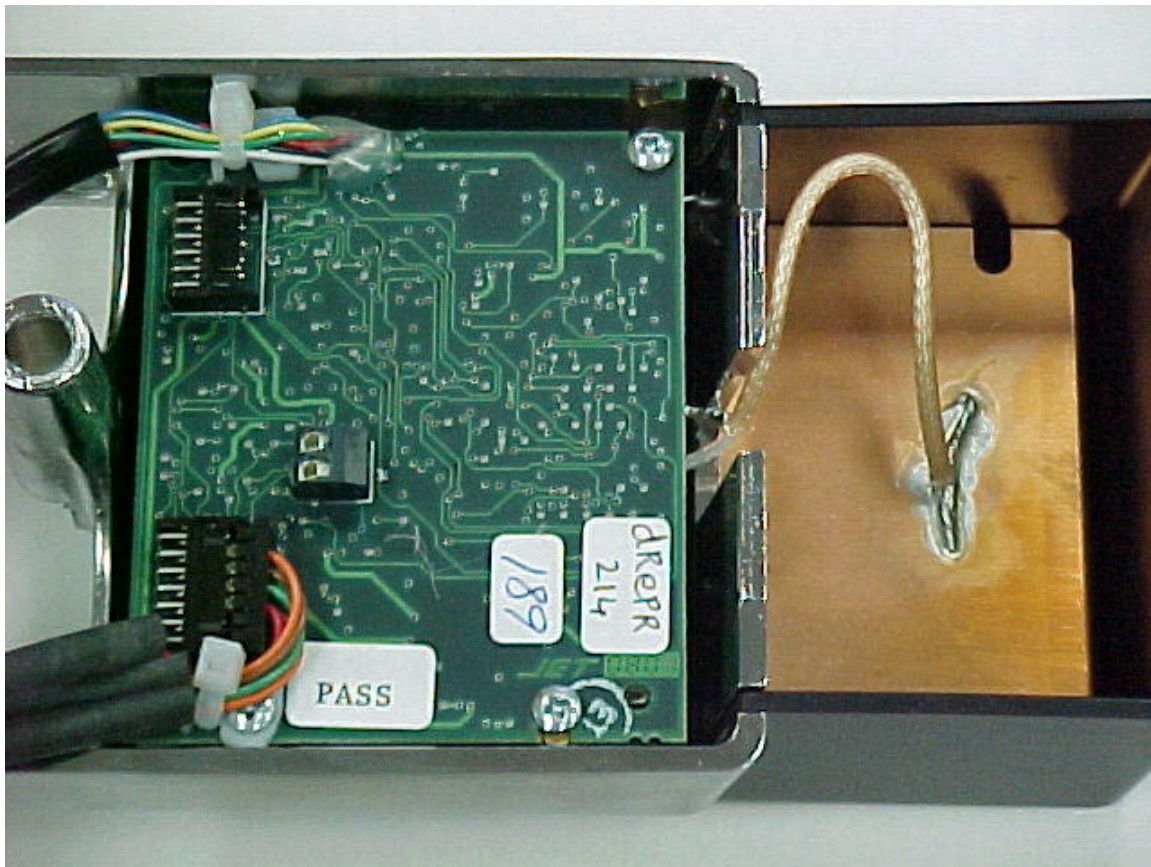
**Interior View of IRL – Integrated Reader Lock.
This view shows the inside to the door assembly.
In view are the following: Batteries, Baseband PCB, Patch Antenna and
Programming Cable located left of the Baseband PCB.**



**Recognition Source, LLC
FCC ID#: PM7-IRL2001**

Photo 7

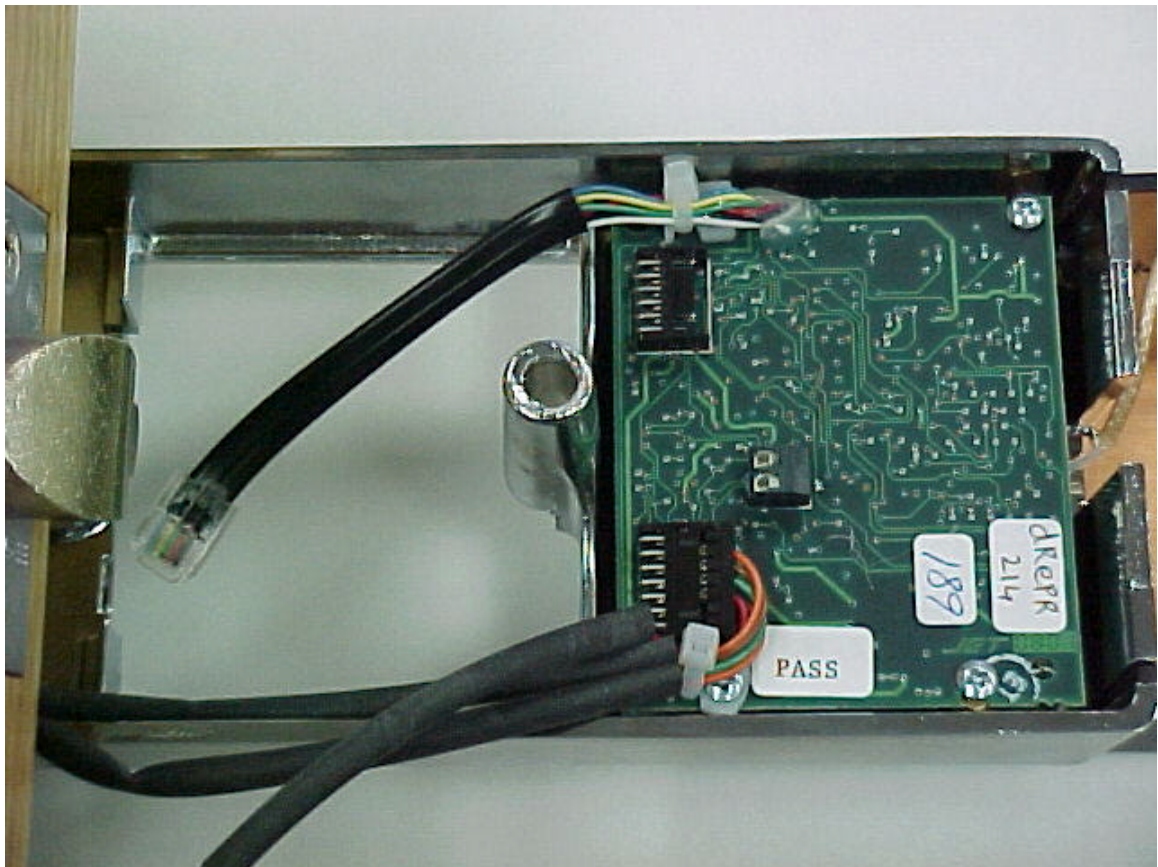
**Interior View of IRL – Integrated Reader Lock.
This view shows the inside to the door assembly.
In view are the following: Close-up of Baseband PCB
and Patch Antenna.**



**Recognition Source, LLC
FCC ID#: PM7-IRL2001**

Photo 8

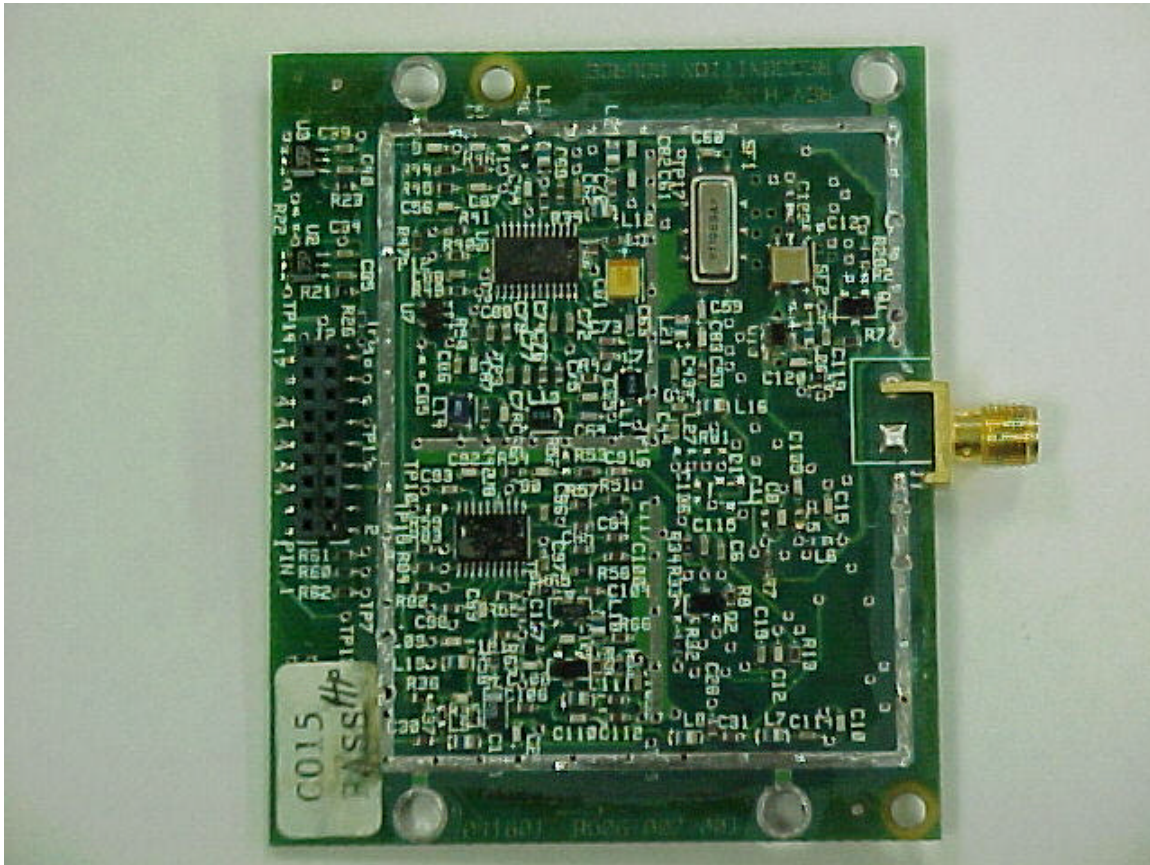
**Interior View of IRL – Integrated Reader Lock.
This view shows the inside to the door assembly.
In view are the following: Close-up of Baseband PCB
and Programming Cable.**



**Recognition Source, LLC
FCC ID#: PM7-IRL2001**

Photo 11

**Interior View of IRL – Integrated Reader Lock.
This view shows the inside to the door assembly.
In view are the following: Close-up of RF PCB with shield cover
removed. This is side A, with SMA connector used
during conducted emissions testing.**



**Recognition Source, LLC
FCC ID#: PM7-IRL2001**

Photo 12

**Interior View of IRL – Integrated Reader Lock.
This view shows the inside to the door assembly.
In view are the following: Close-up of RF PCB with shield cover
removed. This is side B, with SMA connector used
during conducted emissions testing.**

