

멀티미디어의 이상을 실현하는 사람과 샘플

2.0

차세대 꿈의 영상을 실현하는 디지털 TV

# ONAIR USB HDTV

사용자 설명서



SASEM

If any problem happens in using OnAir  
USB HDTV,

Phone : 031-9786-333

FAX : 031-9788-584

URL : [www.sasem.com](http://www.sasem.com), [www.onairtv.co.kr](http://www.onairtv.co.kr)

E-mail : [supports@sasem.com](mailto:supports@sasem.com)

Copyright

Each involving company copyrights the software  
and the firmware in this manual.

Every software and firmware is protected under  
the intellectual property right and treaty,  
computer program preservation and copyright law  
and international copyright convention.

You cannot copy and excerpt this manual without  
permission.

Warrenty : 1 year

©2003-2004 Sasem Co., Ltd. All right reserved.

Made in Korea.

## **INFORMATION TO THE USER (Part 15.105(b))**

### **INFORMATION TO THE USER**

This equipment has been tested and found to comply with the limits for a Class B digital device, pursuant to part 15 of the FCC Rules. These limits are designed to provide reasonable protection against harmful interference in a residential installation. This equipment generates, uses and can radiate radio frequency energy and, if not installed and used in accordance with the instructions, may cause harmful interference to radio communications. However, there is no guarantee that interference will not occur in a particular installation. If this equipment does cause harmful interference to radio or television reception, which can be determined by turning the equipment off and on, the user is encouraged to try to correct the interference by one more of the following measures:

- Reorient or relocate the receiving antenna.
- Increase the separation between the equipment and receiver.
- Connect the equipment into an outlet on a circuit different from that to which the receiver is connected.
- Consult the dealer or an experienced radio/TV technician for help.

### **WARNING (Part 15.21)**

The manufacturer is not responsible for any Radio or TV interference caused by unauthorized modifications to this equipment. Such modifications could void the user's authority to

operate the equipment.”

# Contents

<b>1</b>	<b>Introduction .....</b>	<b>6</b>
1.1	Specification .....	6
1.2	Package Included .....	8
1.3	System Requirement .....	9
<b>2</b>	<b>Installation .....</b>	<b>10</b>
2.1	Installation Checklist .....	10
2.2	Hardware Installation .....	11
2.3	OnAir USB HDTV Device Driver Installation .....	11
2.4	OnAir USB HDTV Application Software Installation .....	14



## 1 Introduction

### 1.1 Specification

#### Digital & Analog TV

- Full HDTV of 1920 X 1080 (ATSC)
- Digital (ATSC) HDTV / Analog (NTSC) TV
- AC3 / AAC Audio Decoding output

#### Recording & Playback

- Real-time or Schedule Recording
- Still Capture (JPEG or BMP File)
- Hardware MPEG2 Encoding for Analog Video Source (easy to create own DVD title via DVD-RW and tool) : Resolution 720 x 480
- Playback HD Stream File format (ATSC and Japan BS)
- Playback Analog TV File (MPEG2 DVD Stream : Resolution 720 x 480 )
- Playback of HD Stream files (Random access)
- Time-Shifting\*
- Real-time playback of D-VHS (Windows XP only)
- Recording the HD stream files from PC into D-VHS (Windows XP only)
- Saving D-VHS streams into PC as stream files (Windows XP only)
- Provide OnAir HD Editor

#### External A/V Input & Output

- External A/V Input (Video, Stereo Audio, S-Video , NTSC/PAL Video )
- SPDIF Output through sound card (will support AAC)

#### Bundle WinDVD4 Player (InterVideo, Inc.)

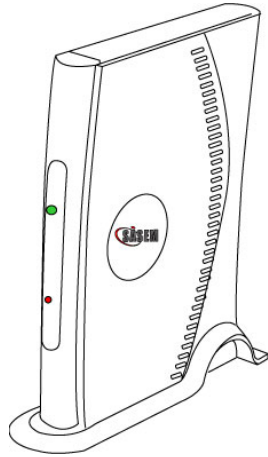
#### Suitable Features

- Wall Paper TV View
- Zoom-In
- Various Aspect Ratios

- Individual Channel Color Adjustment
- Digital Signal Strength Display
- Sleep Timer
- Remote Control (IR Model Only)

\* Time-Shifting ? While playing live Analog TV, the time shifting offers you ability to pause the live TV for pre-defined period of time. It provides by recording Live TV in real-time for pre-defined period of time while playing Live TV. It helps you to not miss any part of Live TV even though you stay away from TV for a while.(Analog TV only)

## 1.2 Package Included



1.USB HDTV



2.Remote  
Controller  
Battery  
included)



3.USB Cable



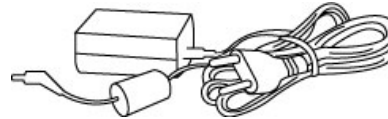
4.RF Antenna  
Cable  
(AAA  
2ea



5.InstallationC  
D



6.Installation  
Manual



7.Adapter

If something excluded, please contact with our Customer support department. (+82-31-978-8660)



### 1.3 System Requirement

- USB 2.0 port supported Desktop PC or Notebook (PCI / PCMCIA types of USB2.0)
- OS : MS Windows XP Service Pack 1 or above, MS Windows XP Media Center Edition (MCE 1.x)
- DirectX 9.0

#### Minimum system requirement (with DXVA support)

VGA	ATI RADEON 7200 or above	Nvidia Geforce MX 440 or above
	ATI Mobility Radeon 7500 or above	Nvidia Geforce 4 Go or above
	Video Memory 32MB or above	
CPU	PentiumIII 800 Mhz or above	PentiumVI 1.6 Ghz or above
Mem.	128MB (256MB Recommend)	

#### Minimum system requirement (not recommended, without DXVA support)

- VGA : AGP4X with video memory 32MB or above
- CPU : Pentium4 1.6Ghz or AMD Athlon XP
- Memory : 128MB (256MB Recommend)



## **2 Installation**

### **2.1 Installation Checklist**

#### **2.1.1 Windows XP Service Pack 1 Installation**

From the desktop menu of "My Computer", click the mouse's right button to open the "Properties". Then, find out what the current operating system is running on your system. If your operation system is not "Microsoft Windows XP Service Pack 1" then please install the "Service Pack 1" from the Windows Update through the internet

Please open Microsoft Internet Explorer, and choose the tool menu on top of menu bar and click the "windows update" and run the update scan. If the update scan is completed, there will be update scan result displayed. From the update scan result list, please install the Microsoft Windows XP Service Pack 1 from "Critical Updates and Service Pack".

#### **2.1.2 USB2.0 Patch (HotFix)**

Because the USB 2.0 is a new device, even Microsoft Windows XP Service Pack 1 has a bug on the USB 2.0 Device Driver.

At first, please confirm the "Windows HotFix - KB822603" is installed on your system from the "program add / remove" under control panel. If your system already installed this, your system had completed the patch of USB2.0 Device Driver Bug. If your system did not have this, please open Microsoft Internet Explorer, and choose the tool menu on top of menu bar and click the "windows update" and run the update scan. If the update scan is completed, there will be a list of update scan result displayed. From the list of update scan result, please find the "Windows XP SP1 recommended update (KB822603)"

under Windows XP menu and install it on your system, or please download the HotFix from following URL and install it on your system.

<http://www.microsoft.com/downloads/details.aspx?amp;playlang=en&familyid=733dd867-56a0-4956-b7fe-e85b688b7f86&displaylang=en>

This HotFix patch program is released by Microsoft to fix a problem of failing recognition of USB 2.0 device.

## **2.2 Hardware Installation**

OnAir USB HDTV is an external HDTV device that connected with personal computer or notebooks via USB2.0 port.

Please plug in the power adaptor into hardware, and connect with personal computers or notebooks via USB cable.

## **2.3 OnAir USB HDTV Device Driver Installation**

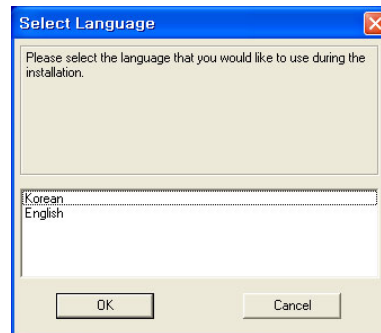
Please insert the provided installation CD into your system's CD-ROM drive. The installation CD will automatically start the installation. From the displayed product list, select the driver installation under OnAir USB HDTV.

If the installation CD does not auto-run, please open window explorer to find the "installer.exe" file and execute the file.



### 2.3.1 OnAir USB HDTV Device Driver Installation for Windows XP

1. This is a dialog box of choosing a language of installation program. Please choose one of languages of either English or Korean, and press [OK] button to continue.



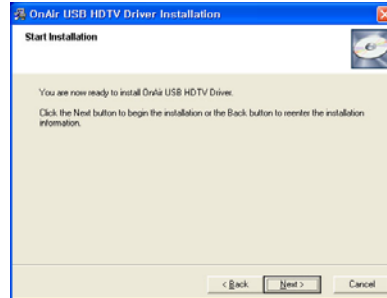
2. This is a dialog box of the warning notice to users that the driver may not be installed if the OnAir USB HDTV is connected to the system. If the OnAir USB HDTV is connected to your system's USB port, please remove it first and then click [Next] button to continue.



3. Please close all other windows application programs before running the installation, and click the [Next] button to continue.



4. If you are ready to run the installation program, please click the [Next] button to continue.



5. The OnAir USB HDTV device driver installation is completed. Please click the [Finish] button, and plug in the OnAir USB HDTV device into your system via USB2.0..



## 2.4 OnAir USB HDTV Application Software Installation

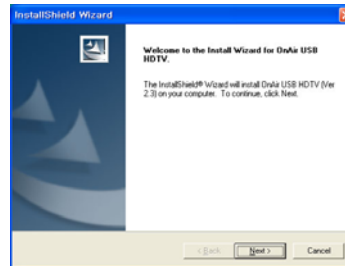
The OnAir USB HDTV application software installation is provided based on application software version 2.2.

The given installation CD with package includes the application software of OnAir USB HDTV.

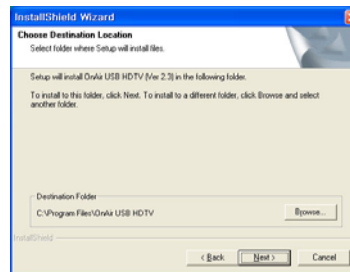
Please insert the provided installation CD into your system's CD-ROM drive. The installation CD will automatically start the installation. From the displayed product list, please select the application software under OnAir USB HDTV.

If the installation CD does not auto-run, please open window explorer and choose the "installer.exe" file to execute the installation.

1. The installation wizard of OnAir USB HDTV will guide you to install the application software. To continue the installation, please click [Next] button.



2. Please choose a destination folder location to install the software. If you would like to choose different folder location, please click [Browse] button and choose another folder location. Please click the [Next] button to continue.



3. It is a dialog box of adding remote control program into "Start Program". For your convenience, we recommend you to add the program in "Start Program" by clicking "Yes" button.
4. It is a dialog box of adding Scheduler program into "Start Program". For your convenience, we recommend you to add the program in "Start Program" by clicking "Yes" button.
5. It is a dialog box of adding the OnAir USB HDTV application software icons to the "desktop" as short-cut icons. For your convenience, we recommend you to add short-cut icons to the desktop by clicking "Yes" button.
6. The OnAir USB HDTV application software is successfully installed. To complete the installation process, please reboot your system. Please click the "Yes" button to reboot your system now or click "No" button to reboot system later. Please click the [Finish] button to complete the installation.

