

Appendix C - User's Manual

Install / User Guide

Next Generation HDTV tuner board leads you to the world of perfect HDTV

ONAIR *DTV* *PRO*



Expression of Our Thanks

First of all, thanks for buying OnAir DTV Pro card of Sasem Co., Ltd.
OnAir DTV Pro sells after the precise quality test.
Sasem preserves customer right by perfect after sales service.
Sasem will expand your choice by various products.

If any problem happens in using OnAir DTV Pro,



+82-2-3142-6060



+82-2-3142-3070



<http://www.sasem.com>

We will try our best to solve the problems with all our heart.
We wish you fixed your eyes on OnAir DTV Pro and purchase products of Sasem Co., Ltd in the future.

What Are Saram and Semtle?

Saram & semtle, [sa:ram] & [semtl], develops, produces and markets computer hardware products and software to any computer user worldwide. Saram means People in Korean and Semtle means computer.

With the growth of computer technologies, computers are very useful tools in all kinds of areas such as industries and academia and became indispensable in human life. However, the computer technologies cannot be meaningful without human being.

The mission of Saram & semtle is to contribute to the world with computer technologies. The main business of the computer is to develop and to produce multimedia computer hardware and to distribute computer accessories as well.

We consider humanity prior to technology and make an effort to benefit human life with our technology, to share our knowledge with people and to learn from other people.

We believe that the value of our existence comes from consumers who purchase our products and try to make Saram & Semtle a consumer-oriented company.

Copyright

Each involving company copyrights the software and the firmware in this manual.
Every software and firmware is protected under the intellectual property right and treaty, computer program preservation and copyright law and international copyright convention.
You cannot copy and excerpt this manual without permission.

©2000-2001 Sasem Co., Ltd. All right reserved. Made in Korea.

FCC NOTICE

THIS DEVICE COMPLIES WITH PART 15 OF THE FCC RULES.
OPERATION IS SUBJECT TO THE FOLLOWING TWO CONDITIONS:
(1) THIS DEVICE MAY NOT CAUSE HARMFUL INTERFERENCE, AND
(2) THIS DEVICE MUST ACCEPT ANY INTERFERENCE RECEIVED,
INCLUDING INTERFERENCE THAT MAY CAUSE UNDERSIRED OPERATION.

This equipment has been tested and found to comply with the limits for a Class B digital device, pursuant to part 15 of the FCC Rules. These limits are designed to provide reasonable protection against harmful interference in a residential installation. This equipment generates, uses and can radiate radio frequency energy and, if not installed and used in accordance with the instructions, may cause harmful interference to radio communication. However, there is no guarantee that interference will not occur in a particular installation. If this equipment does cause harmful interference to radio or television reception, which can be determined by turning the equipment off and on, the user is encouraged to try to correct the interference by one or more of the following measures :

- Reorient or relocate the receiving antenna.
- Increase the separation between the equipment and receiver.
- Connect the equipment into an outlet on a circuit different from that to which the receiver is connected.
- Consult the dealer or an experienced radio/TV technician for help.

NOTE : The manufacturer is not responsible for any radio or TV interference caused by unauthorized modifications to this equipment. Such modifications could void the user's authority to operate the equipment.

Contents

ONAIR DTV PRO PREVIEW.....	5
Contents	5
OnAir DTV Pro System requirements	5
OnAir DTV Pro Specification.....	5
INSTALLATION OF ONAIR DTV PRO.....	7
Install OnAir DTV Pro Card Into System	7
VGA Loop Back Connection.....	8
Dual Display.....	9
VIP 1.1 Connection	9
Sound Card with external Line-In port.....	10
OnAir DTV Pro video signal input and A/V cable	11
Remote control module.....	11
ONAIR DTV PRO PROGRAM	14
Install OnAir DTV Pro Device Drivers	14
Install OnAir DTV Pro Program	17
ONAIR DTV PRO FUNCTIONS.....	22
OnAir DTV Pro Screen composition	22
Function Control Window	22
Screen Control Window.....	23
OnAir DTV Pro Sub menu	24
Remote Control Window	30
ONAIR DTV PRO OPTIONS.....	35
General Option	35
Other Options	38

OnAir DTV Pro Preview

In this chapter, we will check components and specification of OnAir DTV Pro.

Contents

OnAir DTV Pro Board
 OnAir DTV Pro Sub Board
 Remote Control (Two Batteries 1.5V included)
 Remote Control receiving module
 A/V Cable
 VGA Loop Back Cable
 VIP cable
 Cable for DSUB–RCA component
 Stereo–to–Stereo Cable
 6 Pin Cable
 14 Pin S/D Cable
 OnAir DTV Pro install/user guide
 OnAir DTV Pro installation CD

If something is excluded, please contact with our Customer support department. (+82–2–3142–6060)

OnAir DTV Pro System requirements

CPU : Pentium–II 333MHz or higher
 Memory : 64 MB or higher
 HDD : 2GB or higher
 OS : Windows 98 SE, Windows ME, Windows 2000

OnAir DTV Pro is supposed to run only on Windows 98SE or higher, not on Windows 3.1, Windows NT and DOS.

OnAir DTV Pro changes digitally and writes directly the information into Video memory. So DirectX should be supported. In old video card, not supporting Direct X, with Windows 98SE or higher, you cannot run OnAir DTV Pro. OnAir DTV Pro is made into PCI form.

OnAir DTV Pro Specification

- Best reception by SONY Tuner + VSB Module
- Supports ATSC / NTSC
- Video output resolution: 1920X1080i, 1440X1080i, 1280X720P, 1024X 768P, 704X480P, 704X480i
- 1920 x 1080i in 17inch monitor by direct control
- Supports two screen ratio (16 : 9 Wide, 4 : 3 Normal)
- Supports VIP 1.1 & VOP (Overlay by PCI Bus)
- Supports NTSC Progressive Mode (30, 60 Hz)

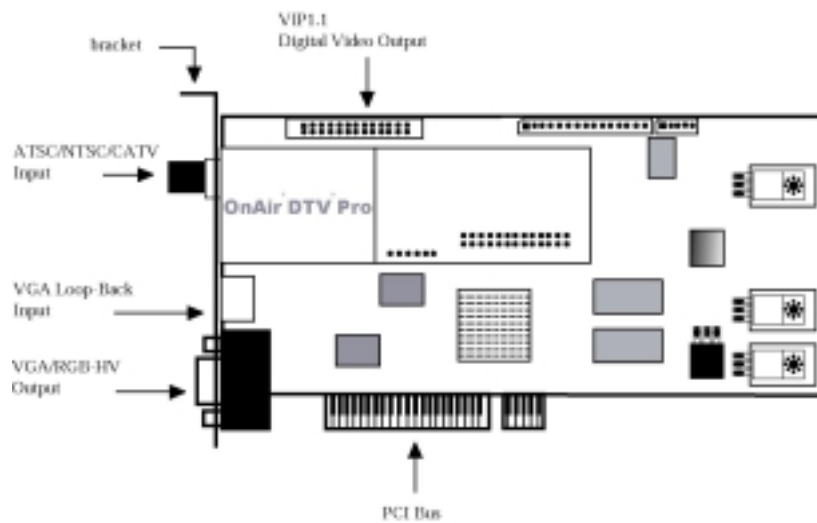
- Embedded 16MB SDRAM
- Supports RGB Video Output
- Supports Component (Y-Pb-Pr) Video output for Digital Ready TV and Projector
- Supports Dual Monitor Display (Overlay & RGB or Component Display)
- Supports SPDIF output (AC-3 Compress Output)
- Supports Analog TV Audio Digital output
- Supports NTSC, PAL Analog Video & S-Video input
- Supports Analog Stereo Sound input
- Supports Remote control
- Easy to connect A/V cable
- Supports HD Stream Data File Play
- Supports Analog TV Closed Caption
- Supports Wall Paper TV (Desktop for TV window)
- Supports Zoom (Zoom in)
- Program and timer of TV program

2nd Chapter Installation of OnAir DTV Pro

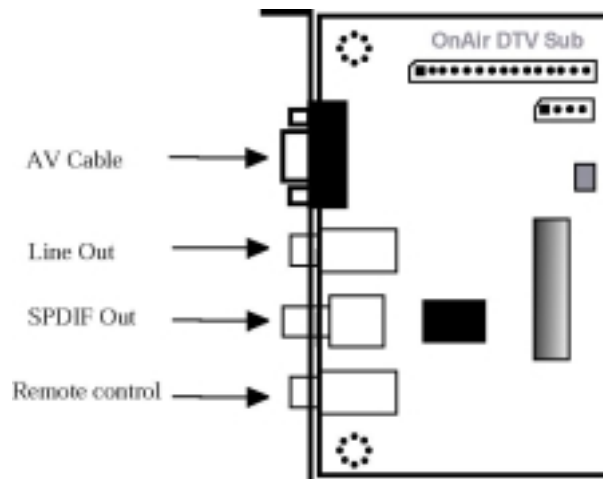
We will check how to install OnAir DTV Pro.

Install OnAir DTV Pro Card Into System

OnAir DTV Pro is composed of OnAir DTV Pro Board, Digital signal receiver and Decoder, and OnAir DTV Pro Sub Board, Audio/Video input and output port. Open your PC and put OnAir DTV Pro board into blank PCI slot. Then, by 14 Pin cable and 6 Pin cable, connect OnAir DTV Pro Board and OnAir DTV Pro Sub Board. Refer to [Figure 2-8] please.



[Figure 2-1] OnAir DTV Pro Board



[Figure 2-2] OnAir DTV Pro Sub Board

If you don't have any confidence in OnAir DTV Pro installation, consult with the seller or experts. Wrong installation may seriously damage your system.

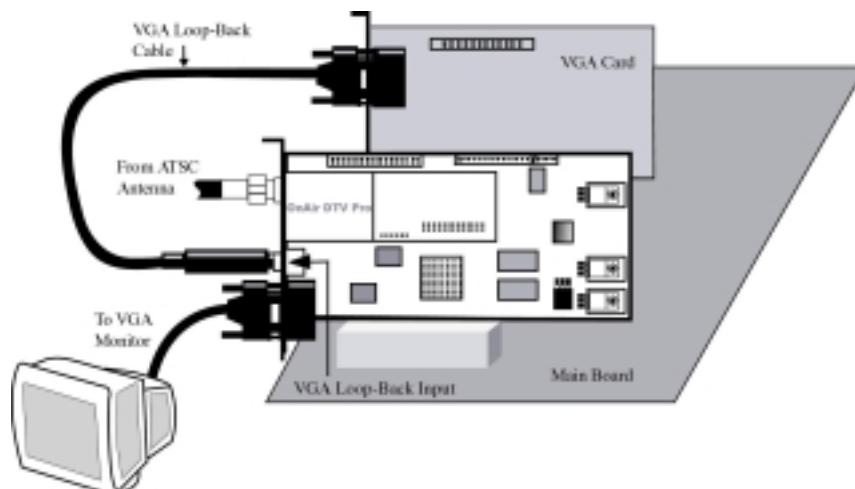
Please pay attention to the below when you start installation or change hardware composition.

First, remove all the static electricity by wearing the bracelet for keeping off and touching the metal like the grounding faucet.

Second, keep off the socket and connector. Water and dirt will make surface decayed or wrong.

VGA Loop Back Connection

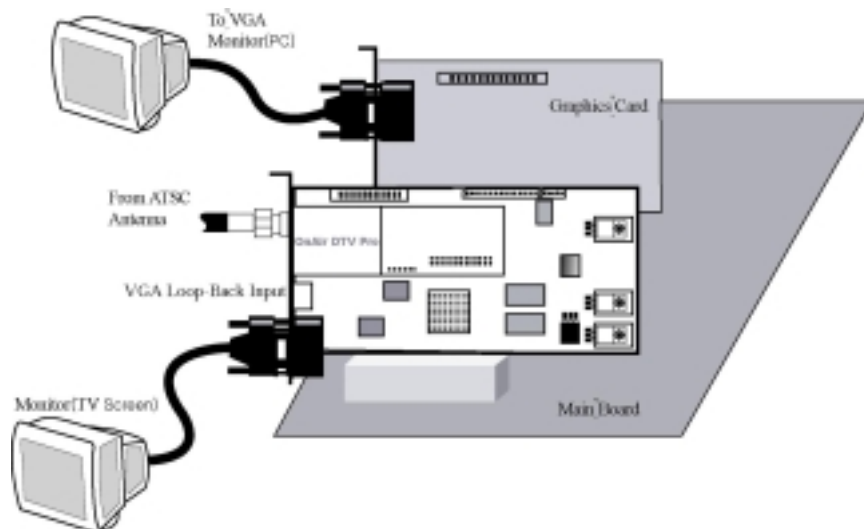
VGA Loop Back is for connecting one monitor. To put VGA Card output signal in OnAir DTV Pro Board, please connect boards by VGA Loop Back Cable like [Figure 2-3]. In HDTV FULL resolution of 1920 x 1080, VGA Loop Back directly control monitor to the extent of Brightness and Sharpness of Digital ready TV. Monitor should be directly connected with OnAir DTV Pro Board by VGA Loop Back cable.



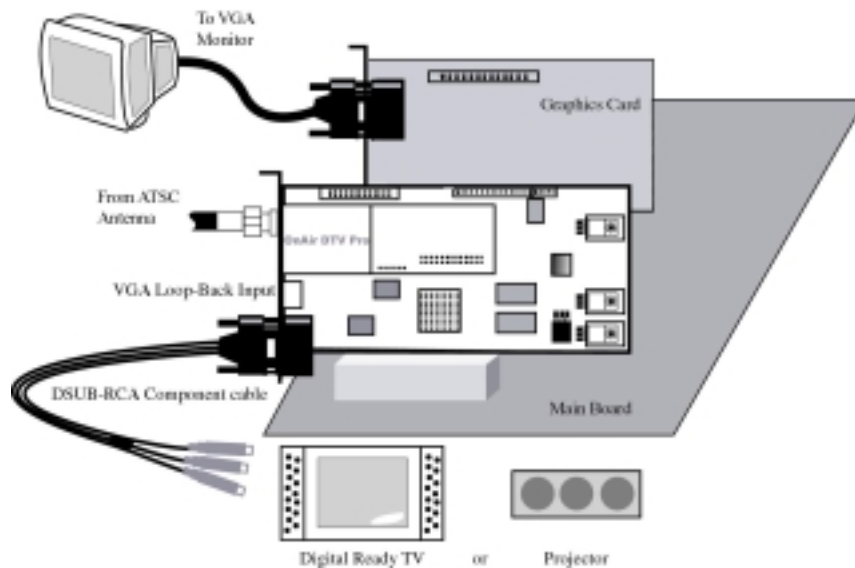
[Figure 2-3] VGA Loop Back Connecting

Dual Display

Please set OnAir DTV Pro Board and Graphics card like [Figure 2-4] and [Figure 2-5] to use VGA monitor and HDTV monitor for Dual Display. One monitor is for TV screen and the other for monitor of PC work. To support this mode, OnAir DTV Pro supports VGA Card output. To enjoy TV in Digital Ready TV or Projector, connect Digital Ready TV and Projector by DSUB-RCA Component Cable like [Figure 2-5].



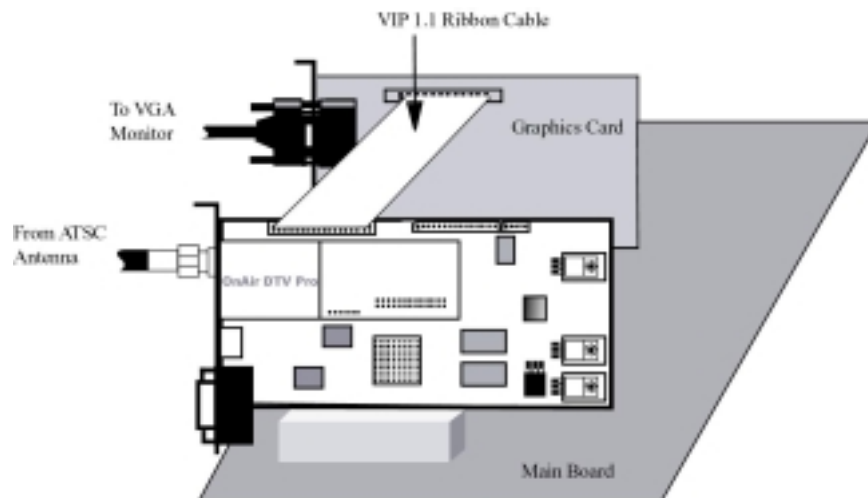
[Figure 2-4] Dual Display-1 (Dual monitor configuration)



[Figure 2-5] Dual Display-2 (Monitor and HDTV configuration)

VIP 1.1 Connection

VIP 1.1 is the VGA Card connection for Hardware Overlay. It is an old standard, so we recommend VOP format. Like [Figure 2-6], please connect OnAir DTV Pro Board with VGA Card by VIP cable.



[Figure 2-6] VIP connection

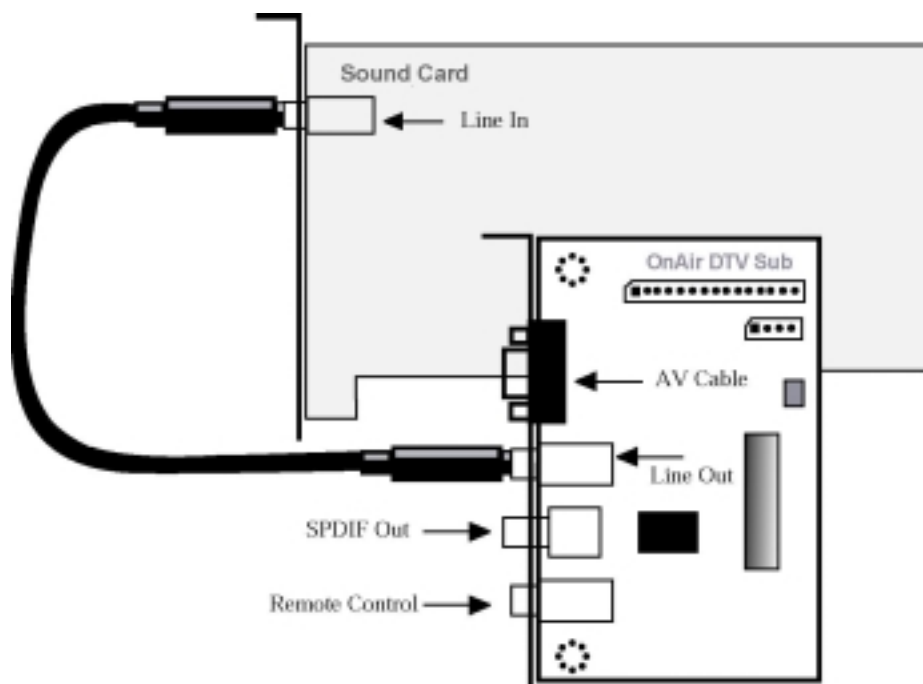
What is VOP?

(VOP stands for Video Object Plane. Through PCI slots, Video signals are sent to VGA Card for displaying Video signal. Unlike VIP 1.1, more delicate video Overlay is possible in VOP.)

Sound Card with external Line-In port

Most Sound Cards and SoundBlaster series have external Line-In port. In this case, connect Line-Out port of 'OnAir DTV Pro Sub Board' with Line-In port by Stereo-to-Stereo cable.

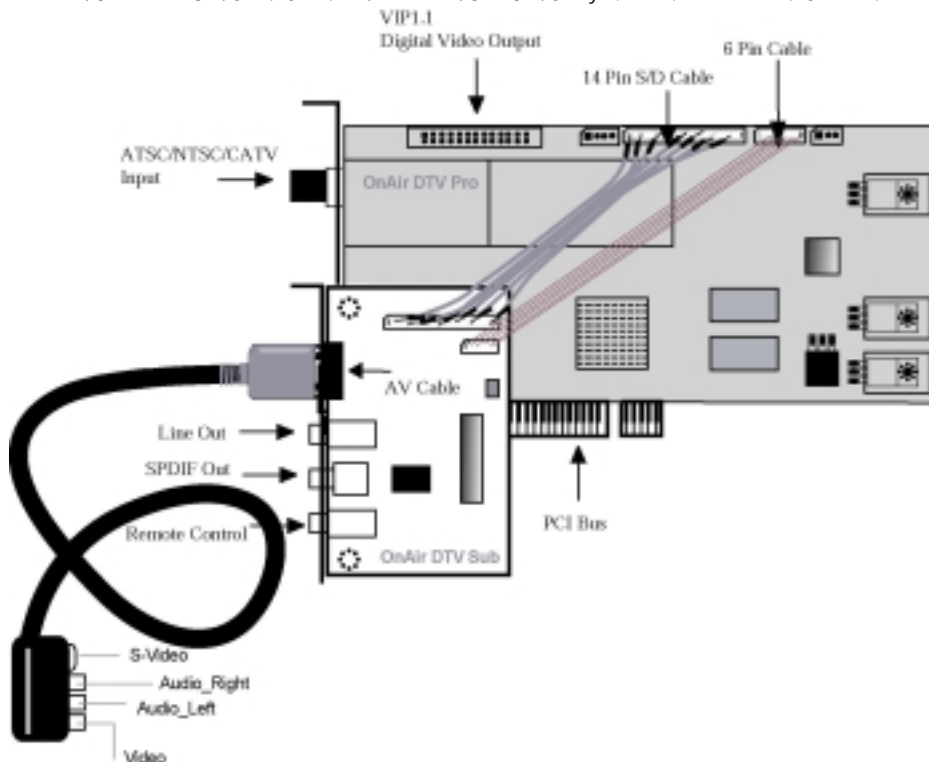
You don't have to connect sound card, because OnAir DTV Pro basically output sound as Wave format.



[Figure 2-7] Sound Card connection

OnAir DTV Pro video signal input and A/V cable

First of all, connect A/V Cable port of OnAir DTV Pro Sub Board and A/V cable. A/V cable has S-Video, Audio, Video port for VCR and Video game player. Second connect OnAir DTV Pro Sub Board and OnAir DTV Pro Board by 14 Pin Cable and 6 Pin Cable.



[Figure 2-8] OnAir DTV Pro Board and Sub board connection

Video

To input Composite video signal, OnAir DTV Pro can be connected with video out port of composite devices such as VCR, Video camera, and camcorder.

S-Video

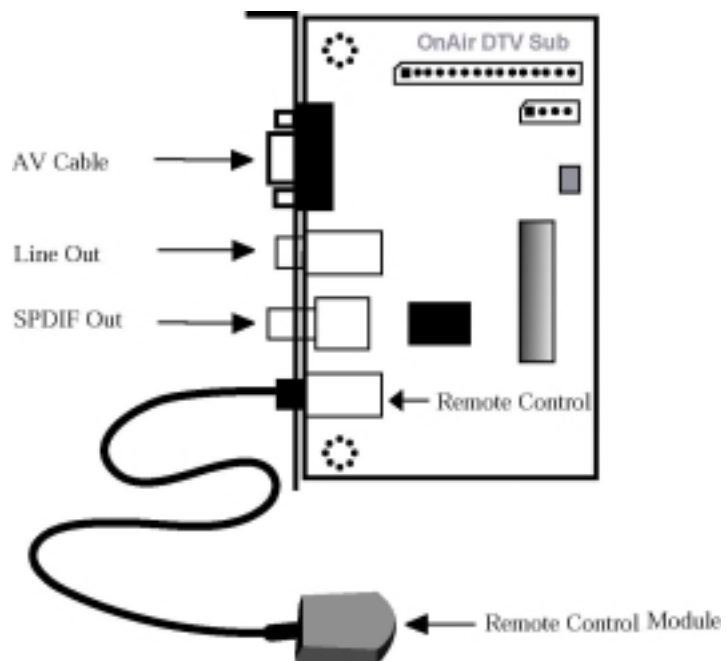
To input S-Video type video signal, OnAir DTV Pro can be connected with S-Video out port of S-Video type devices such as Super-VHS VCR, SEGA Saturn, SONY Play station, and so on.

Audio_Left, Audio_Right

As a Stereo sound input port of Video, it is connected with Audio-Out port of VCR, and other devices.

Remote control module

With remote control, you can easily enjoy OnAir DTV Pro. To use remote control, please connect Remote control module with OnAir DTV Pro Sub Board.



[Figure 2-9] Remote control module

3rd Chapter OnAir DTV Pro Program

In this chapter, we will guide how to install OnAir DTV Pro Program that is Digital TV watching program. This guidance is based on Windows 98SE.

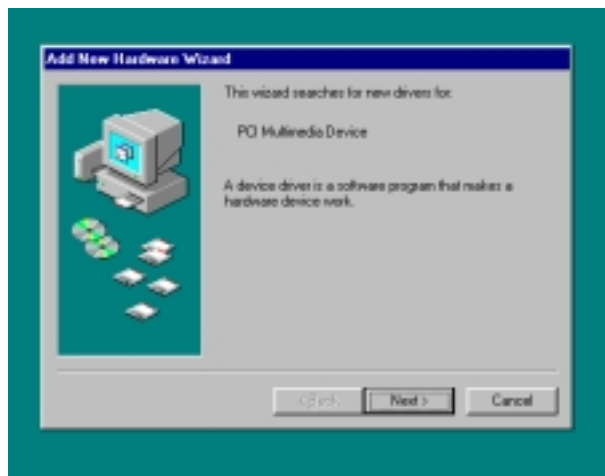
In case of Windows ME and Windows 2000, please install OnAir DTV Program like the following step.

Install OnAir DTV Pro Device Drivers

OnAir DTV Pro supports PnP (Plug & Play). Setting board and running Windows, your system detects the presence of new hardware. At system of PnP, please follow the below.

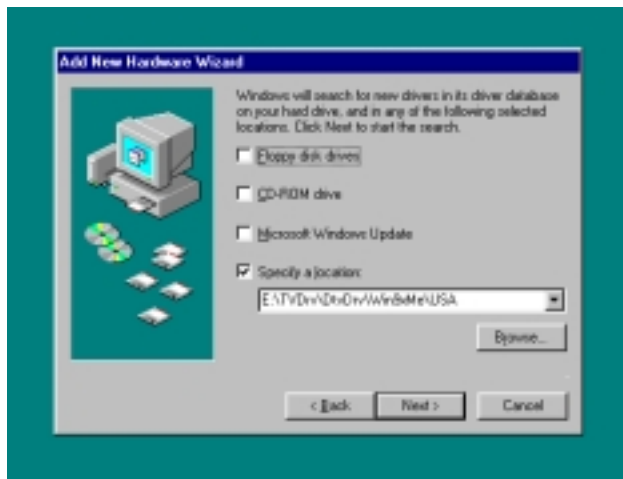
Insert OnAir DTV Pro card firmly to a PCI slot in your computer. Then restart your Windows 98SE. On booting up, Windows 98SE will detect the presence of a new hardware and display a message that **NEW HARDWARE ARE FOUND**. OnAir DTV Pro will be recognized as **PCI Multimedia Video Device** [Figure 3-1]. Check the names of devices. Click **Next**.

1.



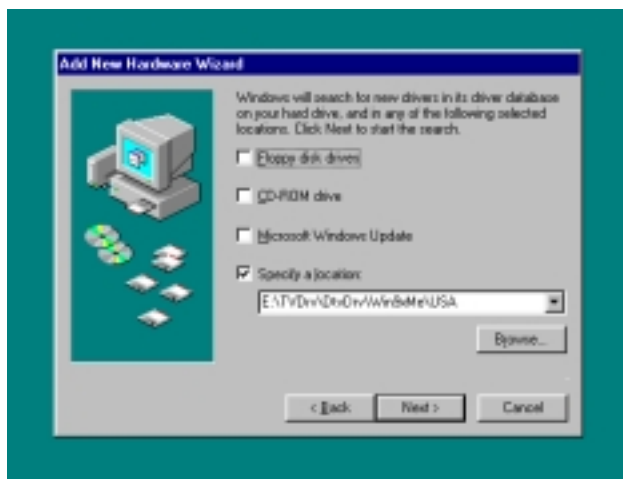
[Figure 3-1] Detecting New Devices

Select the **Search for the best driver** for your device, then click **Next** [Figure 3-2]



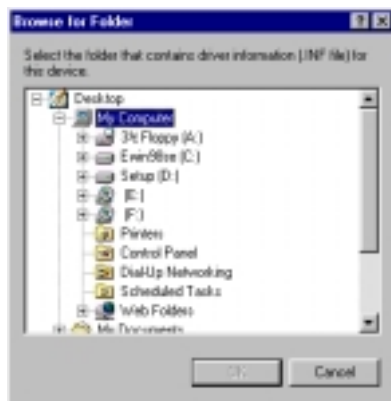
[Figure 3-2] Starting Installation

Now locate OnAir DTV Pro device driver. First, insert the provided installation CD into your CD-ROM drive. OnAir DTV Pro device driver is in win9xdrv in CD. Instead of selecting “Floppy Disk Driver”, then click **Browse** as in [Figure 3-3]



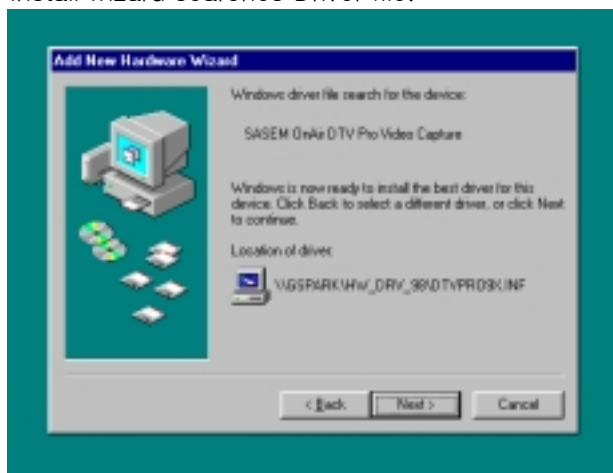
[Figure 3-3] Locating Device Drivers

When the dialog box “**Browse the folder**” is displayed, select **win9xdrv** folder in your CD-ROM drive. Then Click **OK**. Now the dialog box shown in [Figure 3-3] will appear again. Check the driver path (x:\w\win9xdrv) in **Specify a Location**. Click **Next**
 * Win2kxdrv for Windows 2000



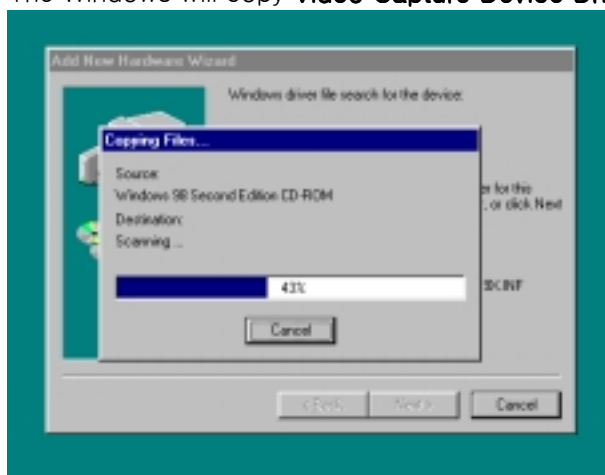
[Figure 3-4] Browse the folder

Install wizard searches Driver file.



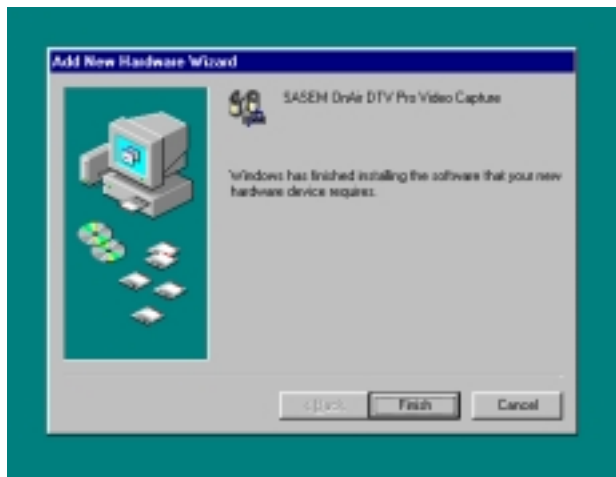
[Figure 3-5] Checking Driver's Location

The Windows will copy **Video Capture Device Driver** to the system. Click **Next** to continue



[Figure 3-6] Copying Files

Now **Video Capture Device Driver** is installed. Follow on-screen [Figure 3-6] instruction to complete the installation. Click Finish, and **Digital Audio Device Driver** installation will be finished.

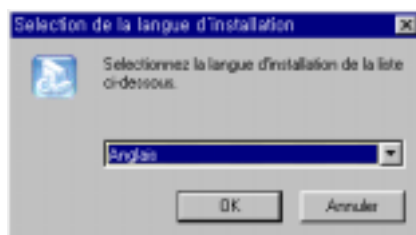


[Figure 3-6] Finishing Video Capture Device Driver Installations

Install OnAir DTV Pro Program

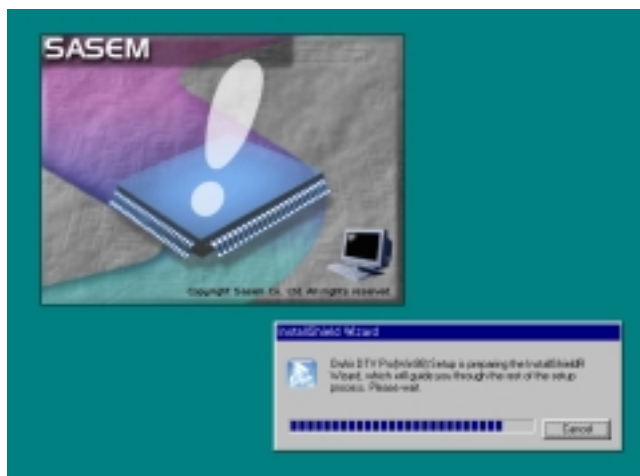
We will guide how to install OnAir DTV Pro Program saved at program folder of Program. Run Setup.exe and install program like the following step.

1. Run Setup.exe, and language selection [Figure 3-7] will be displayed. Please select language and click **OK**. If you select other languages except Korean, OnAir DTV Pro program is installed in English.




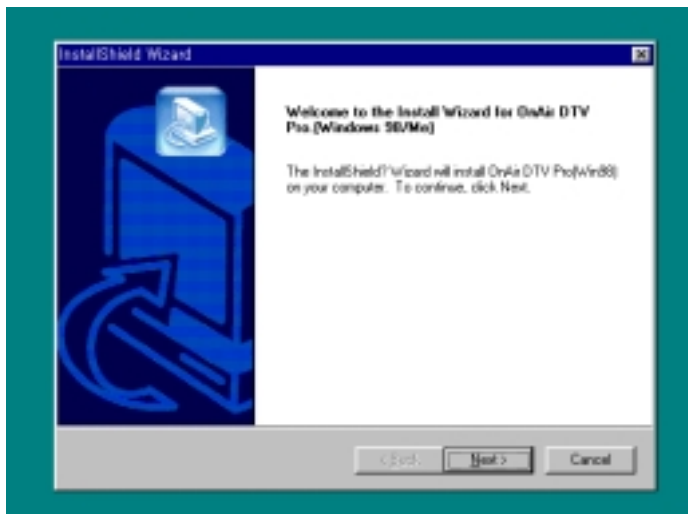
[Figure 3-7] Language selection

2. Install shield starts like [Figure 3-8].



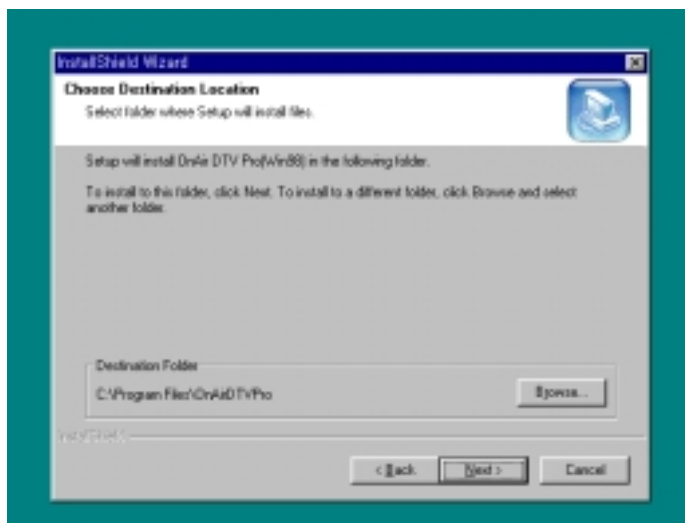
[Figure 3-8] Install shield

3. Install shield shows OnAir TV Program Installation like [Figure3-9].
Click .



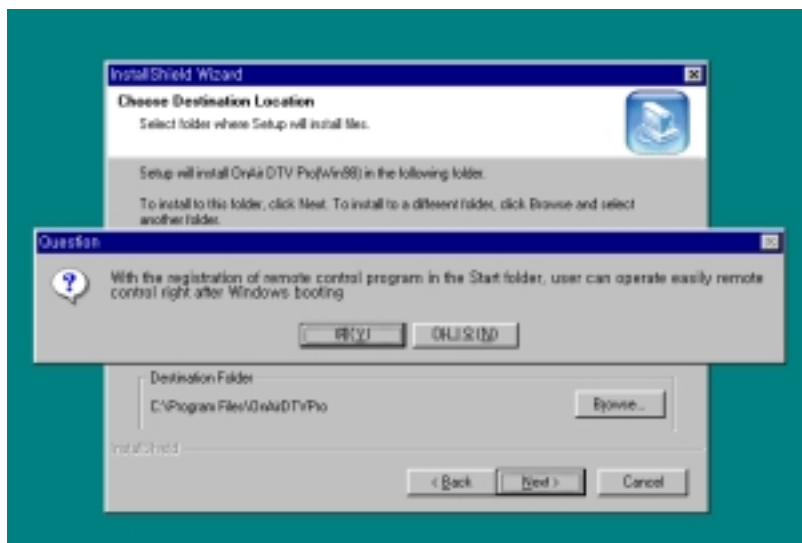
[Figure 3-9] OnAir TV Program Install

4. Assign the folder for OnAir TV program and click .



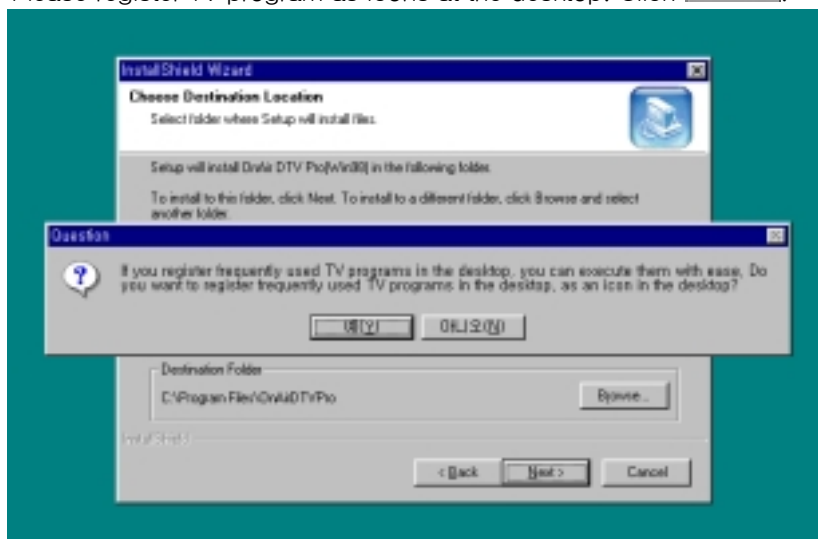
[Figure 3-10] Folder selection

5. Then dialogue box for registering Remote control program. Click .



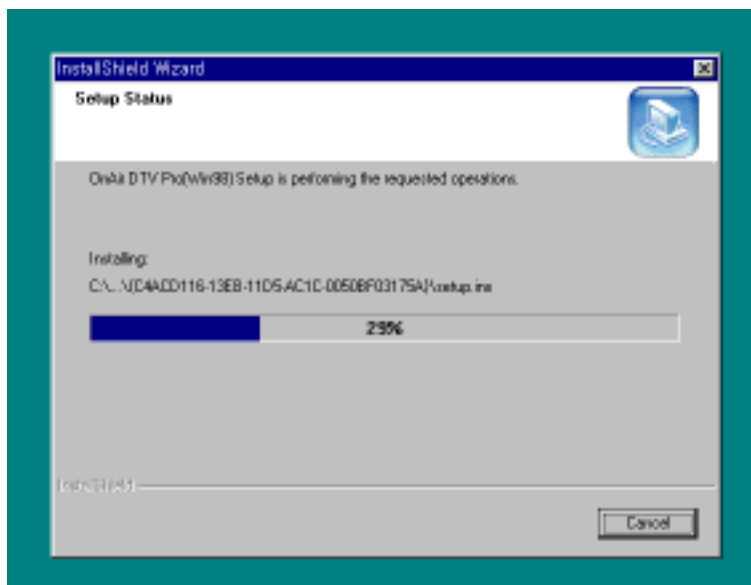
[Figure 3-11] Remote control program registration

6. Please register TV program as Icons at the desktop. Click .



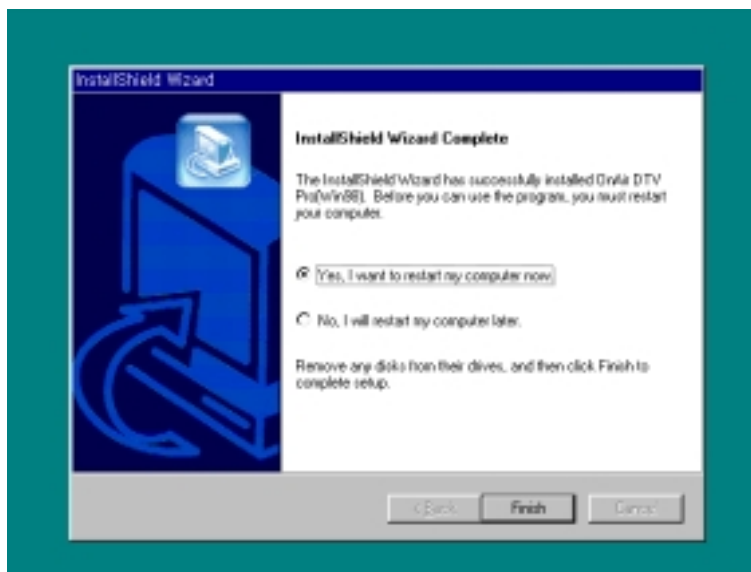
[Figure 3-12] Registration TV Program at the desktop

7. You can check the present installation status.



[Figure 3-13] Installation status

8. The dialogue box [Figure 3-14] will be displayed after program installation.
“ Yes, I want to restart my computer now”. Clicking Finish in the state of selection of item will restart system.



[Figure 3-14] Installation is finished

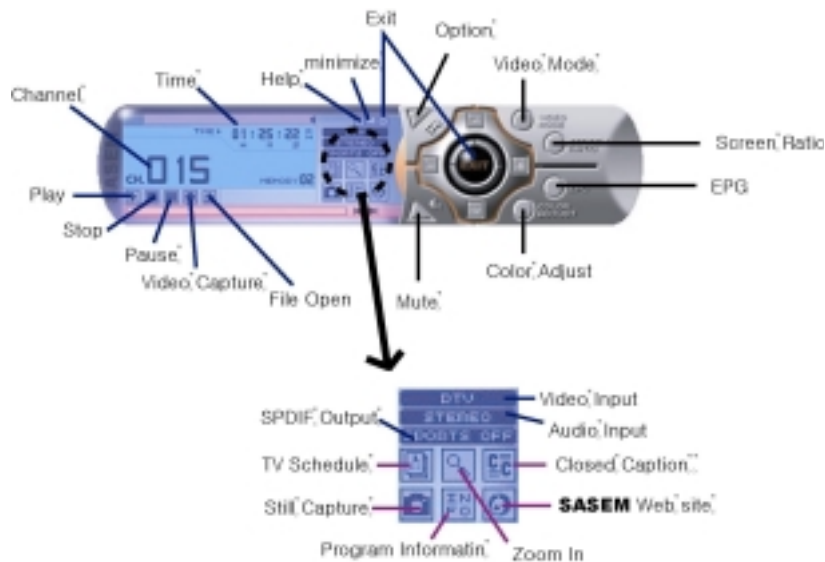
4th Chapter OnAir DTV Pro Functions

OnAir DTV Pro Screen composition

OnAir DTV Pro program is composed of function control window, screen control window, main screen, and remote control window.

Function control window, screen control window, main screen are directly used in OnAir DTV Pro. Remote control window is supporting program for OnAir DTV Pro.

Function Control Window



[Figure 4-1] OnAir DTV Pro Function Control Window

VIDEO MODE : You can select TV mode among DTV, TV, VIDEO, and S-VIDEO.

SCREEN RATIO : You can select screen ratio between 4:3 (normal) and 16:9 (Wide).

EPG : EPG stands for Electronic Program Guide. Reservation by the Internet will be supported in the future.

COLOR ADJUST (Screen Control Window) : Calling Screen Control Window, you can adjust the screen.

Option : You can set General option, and other option.

Mute : You can make sound Mute. As a toggle format, Mute returns to the former state by the click of Mute button.

Help : You can call the help for OnAir DTV Pro. Help will be available in the future.

Minimization : You can minimize TV window.

End : You can end OnAir DTV Pro Program.

Time : The present time is displayed. In playing file, playing time will be displayed.

Video Input : Video signal source is displayed (DTV, TV, S-VIDEO, and VIDEO).

Audio Input : Audio signal source is displayed (Mono, Stereo).
 SPDIF Output : SPDIF output state is displayed (SPDIF ON / OFF).
 Channel : The present program channel is displayed.
 Program reservation : User can confirm the current program is reserved.
 Play : You can play HDTV Stream File.
 Stop : You can stop HDTV Stream File Play.
 Pause : You can pause HDTV Stream File Play.
 Video capture : Video capture will be supported in the future.
 Open file : You can call HDTV Stream File
 Reservation : You can reserve specific program at specified time.
 Zoom : You can zoom in a certain area.
 Closed Caption : Closed Caption means to send the lettered information on the television signals. OnAir DTV pro has the function of viewing caption within. With this function, users can see the caption on the screen and save it as file. Closed caption supports only in analog TV.
 Capture a still : You can capture stills of the present program. This mode will be supported in the future.
 Program information : The dialog of OnAir DTV Pro program version and Homepage is displayed.
 Sasem homepage: You can visit Sasem homepage (www.sasem.com)

Screen Control Window

OnAir DTV Pro can control the brightness, contrast, color, and chroma at the best condition.

You don't have to control screen every time because each channel has remembered the default value.

For control, click the lever you want to coordinate and hold down Ctrl and adjust with left/right keys. Also by wheel of Wheel mouse, you can set the each value.

Screen Control Window is only for analog TV. **In Digital TV, you can adjust the value only at Full Screen Mode by the below listed keys. "C"=Contrast, "B"=Bright, "S"=Saturation, "D"=Default**

Pressing the above keys, you can lessen the values. The above keys with pressing Shift key can increase each value.

Please adjust Monitor color temperature to 6500 °c, natural color value, in the monitor that setting Monitor color temperature is available.



[Figure 4-2] Screen Control Window

DEFAULT: Set TUNNING as 0, 128 for other items. (Refer to the added functions)

BRIGHTNESS: Adjust BRIGHTNESS. 0 is brightest and 255 is darkest.

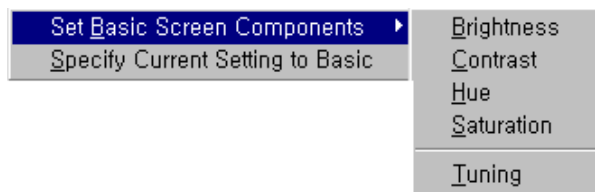
CONTRAST: Adjust CONTRAST. 0 is most unclear screen state, while 255 is the clearest. If the color of screen is not clear, low down this value.

HUE: Regarding COLOR adjustment, you can adjust your own favorite colors.

SATURATION: Regarding CHROMA adjustment, 0 is black and white TV while 255 is most saturated state of screen.

TUNING: To adjust TV channel in detail, you can use this function, from +99 to -99, when the channel isn't caught by the default.

Sub Menu, [Figure4-3] is displayed by the right click on Screen Control Window.



[Figure 4-3] Screen Control Window Sub menu

Set Basic Screen Components : Return to the Screen Color Default value.

Specify Current setting To Basic : You can set current state as a default. This time set default is Screen Color Default.

OnAir DTV Pro Sub menu



OnAir DTV Pro sub menu will be displayed by the right-click on mouse at main screen or operation window control. You can adjust the functions of OnAir DTV Pro in detail.

Users can adjust minutely various functions of OnAir DTV Pro and remote control.

Parenthesized keys in the title are hotkey for each menu.

[Figure 4-4] OnAir DTV Pro Sub Menu

Operation Control Window (Ctrl+"H")

Display or remove operation control window

Screen Color Control Window (Ctrl+"Q")

Display or remove screen color control window

Video Source (Page Down/Tab)

OnAir DTV Pro get video signal from 4 kinds of video input port such as Digital TV, Analog TV, Video, and S-Video. Among these ports, OnAir DTV Pro selects video input source that will be displayed at the main screen. **Tab key converts Digital TV to Analog TV, vice versa.**



[Figure 4-5] Video Source

Digital TV : OnAir DTV Pro displays Video signal from Digital TV.

Analog TV : OnAir DTV Pro displays Video signal from Analog TV.

Video : OnAir DTV Pro displays Video signal from NTSC, PAL Analog Video.

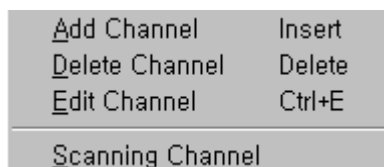
S-video: OnAir DTV Pro displays Video signal from S-Video port at A/V cable.

Air: When Video signal is from the antenna, please select this.

Cable: OnAir DTV Pro displays video signal from cable TV.

※You should set Digital TV and Analog TV mode at Air and Cable mode.

Channel Control

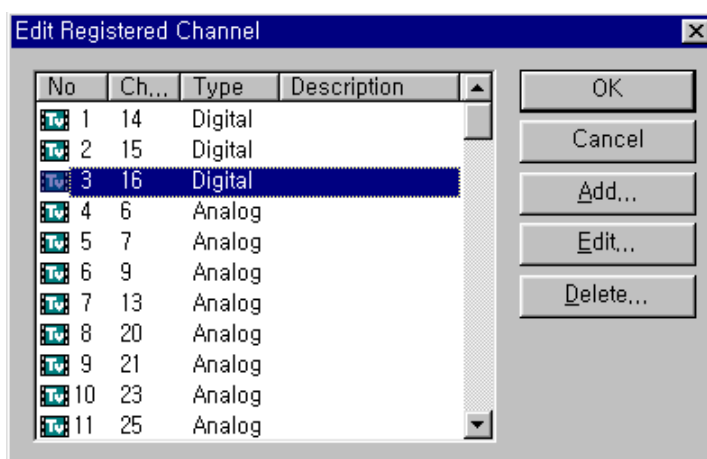


[Figure 4-6] Channel Control

Add channel: You can add the present channel in the channel list. At this time, the memo section is blank.

Delete channel: You can delete the present channel in the list.

Edit channel: If you select edit channel from the channel selection menu, the dialogue box like the [4-7] will be displayed. At this dialogue box, you can operate Add (registering channel), Edit (editing channel), Delete (deleting channel) and so on.



[Figure 4-7] Channel Edit

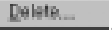
Click “Add” will make the dialogue box displayed. The information is registered by filling in Channel, TV format and Memo about channel.

Channel is designated by number (1~125), besides users can write maximum 29 letters (English) memorandum. If you want to register the channel already added, the below warning [Figure 4-8] comes up and “Add Channel” fails.



[Figure 4-8] Add Channel warning

Click “Edit” will make the dialogue box displayed. It seems like the above Add Channel dialogue box, however, only memorandum information can be changed.

Click “Delete”, and erase the added channel information. You can select block by Shift+.

Scanning Channel: Every channel, receiving video signals, is automatically scanned and edited. OnAir DTV Pro scans Digital TV and Analog TV in order. In this case, blank space is the memorandum of channel information at each.

Closed Caption (Ctrl+“T”)

Closed Caption means to send the lettered information on the TV signals. OnAir DTV Pro has the function of viewing caption within. With this function, users can see the caption on the screen and save it as a text file. Currently Closed Caption is supported only in analog TV.

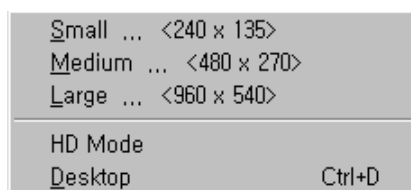
Screen View

Preview : In case VGA Card can't support overlay for Video signal, you can use this mode. Video data is directly sent to Window screen, much system resources are required. So it is difficult to enjoy normal screen.

Overlay : VGA Card send video signal to the additional memory. (The best screen can be handled)

Screen Size (Page Up)

You can change the size of main screen. Usually dragging the window can change the size. OnAir DTV Pro can process the screen by the size of three sizes (240x135, 480x270, 960x540), the optimum size for the finest screen quality. Another screen size can bring about the screen quality drop. You can freely adjust screen size Mouse with Shift Keys regardless of Screen Ratio.

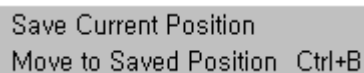


[Figure 4-9] Screen Size

HD Mode : Double click on TV screen makes it full screen mode.

Desktop (Ctrl+“D”) : You can enjoy TV at Windows desktop. Pressing Ctrl+ “D” returns original TV window.

Default Window Position



Save Current Position
Move to Saved Position Ctrl+B

[Figure 4-10] Default Windows Position

“Save current position” means the location where OnAir DTV Pro displays the main screen. Moving TV screen to a certain location and selecting “Save current position” set the present position as Default window position. Once Default window position is set, screen can directly be moved to the saved position by click “Move to saved position” in the sub menu or “Ctrl+B”.

Always top

OnAir DTV Pro is always displayed above other programs.

Save a still



This mode will be supported in the future.

Display a still (will be supported) : Still, on the spot of menu selection, is continuously displayed at the main menu.

Save Video Image (will be supported)

OnAir saves the present contents on the screen to Video Folder of OnAir DTV Pro.

Copy to clipboard (will be supported)

Still is copied to clipboard.

Freeze (will be supported)

Still, on the spot of menu selection, is displayed at the main menu.

DTV File Play

You can play HDTV stream.

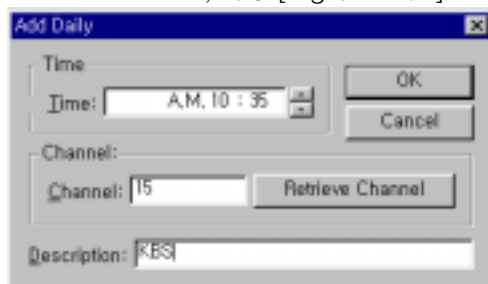
TV Schedule

You can reserve a program at a fixed day.



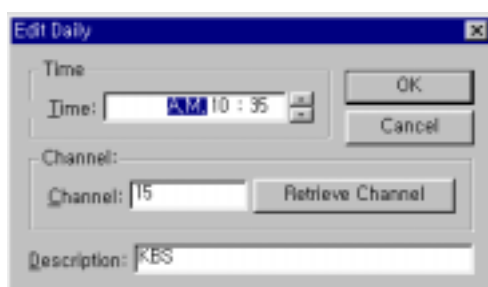
[Figure 4-11] TV schedule

Click **Add...**, and [Figure 4-14] will be displayed.



[Figure 4-12] Daily schedule

Please fill time, channel, memorandum in [Figure 4-14] and press “Confirm”. Also Weekly and special schedule can be reserved like this way. Click **Edit...**, [Figure 4-15] will be displayed. You can edit the information about TV schedule.



[Figure 4-13] Daily Schedule Editing

Click “Delete”, and erase the daily schedule in the list.

Run TV Schedule

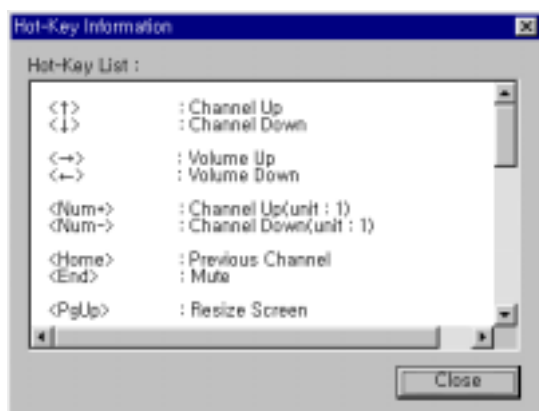
You can run TV schedule.

Options

Refer to the 5th chapter “OnAir DTV Pro Option”

Hotkey Information

OnAir DTV Pro shows the basic hot-key information as the dialogue box like [Figure 4-16].



[Figure 4-14] Hotkey Information

Tip of the day

Whenever program and driver are upgraded, OnAir DTV Pro shows the information about added functions.



[Figure 4-15] Tip of the day

About OnAir TV

User can get the information about the program version and web site.



[Figure 4-16] About OnAir TV

Mono/Stereo (Ctrl+A)

In case of multiplex transmission, the main language, sub language, and multiplex are available. (Will be supported)

Sound Only (Ctrl+End)

OnAir DTV Pro is minimized to enjoy only sound and display no window in the screen.

Timer (Ctrl+Z)

OnAir DTV Pro has a timer to display left time for the exit.

Exit

Ends OnAir DTV Pro.

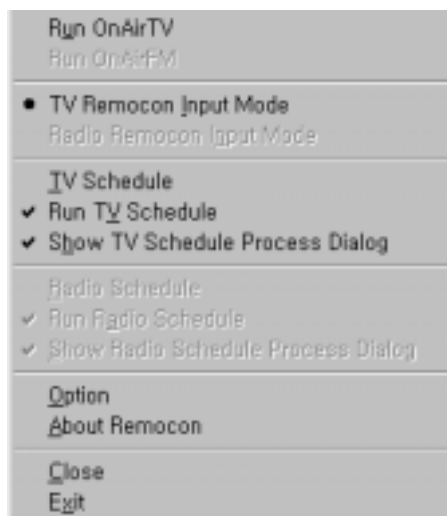
Remote Control Window

OnAir DTV Pro remote control window operates TV schedule and controls OnAir DTV Pro Program by remote control.



[Figure 4-17] Remote Control Window

When OnAir DTV Pro remote control and schedule program are executed, TV icon is displayed in the system tray. The right click icon will display the menu like [4-18].



[Figure 4-18] Remote Control Menu

Open remote control window

In case of minimized OnAir DTV Pro remote control and schedule program, the choice of this menu will return to former size.

Run OnAir TV

You can make OnAir DTV Pro program run.

TV remote control input mode

This option can change the remote control signal operation mode of OnAir DTV Pro remote control and schedule program into TV remote control input mode.

TV schedule

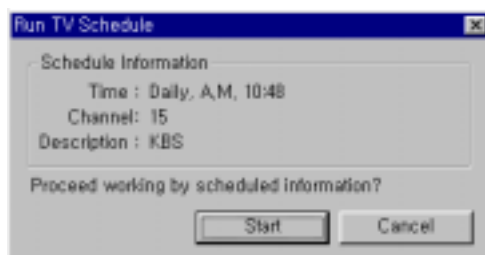
In TV schedule, “daily”, “weekly”, and “fixed day”. The below is how to schedule TV program. For the more details, refer to the 5th chapter “OnAir DTV Pro Option”.

Run TV schedule

To run OnAir DTV Pro and at the fixed time, please mark the “Run TV schedule”.

Show TV Schedule process dialog

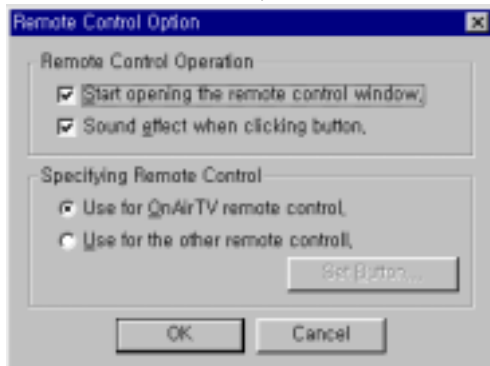
OnAir DTV Pro scheduler is supposed to display the dialog, [Figure4-19] at the fixed time.



[Figure 4-19] TV Schedule process dialog

Click “Start” will progress the operation on scheduled information. In case, unmark “Show TV schedule process dialog”. To display dialog, please mark “Show TV schedule process dialog” and “Show Radio schedule process dialog”.

Remote Control Option



[Figure 4-20] Remote Control Option

Remote control operation

Start opening the remote control: You can set remote control always opens when program is running.

Sound effect when clicking button: when you click remote control, you can hear the sound effect. You can set whether or not effect will sound.

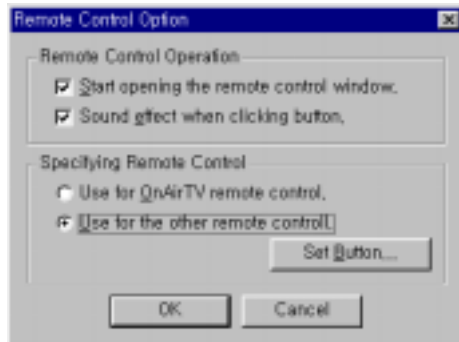
Specifying remote control

Use for OnAir DTV Pro remote control: When you use OnAir DTV Pro remote control, please mark this option.

Use for the other remote control: when you use the other remote control such as TV and VCR, please mark this option. In this case, you should set button by each function. * Not all remote control can be set for OnAir DTV Pro.

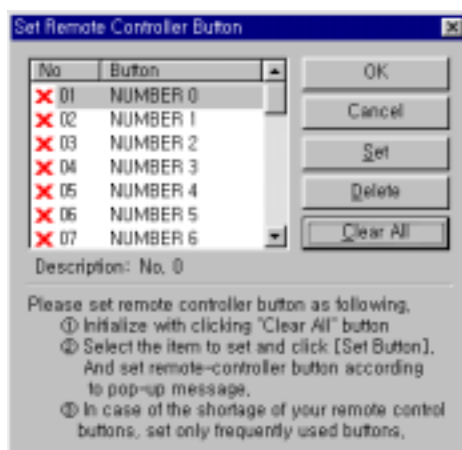
Set remote control button

1. At “Specifying remote control”, mark “Use for the other remote control” and click “Set Button” please.



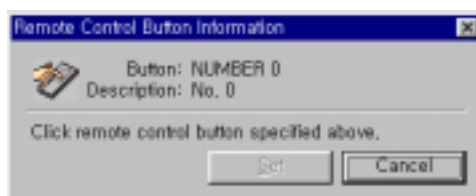
[Figure 4-21] remote control

2. Please initialize every button by click of “Clear all”, and [Figure 4-24] will be displayed.



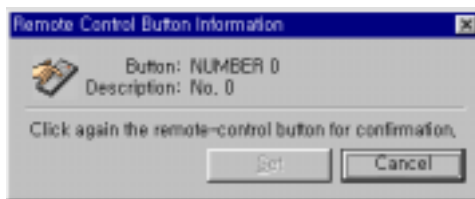
[Figure4-22] Initialization

3. Please select the button to be set and click Set button.
4. Click remote control button specified.



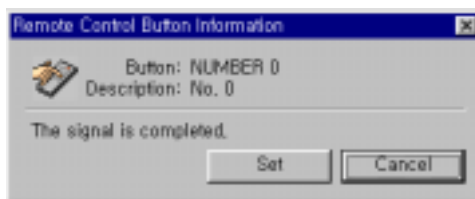
[Figure 4-23] Button Setting

5. When the dialog like [Figure 4-24] is displayed, please click remote control button once more.



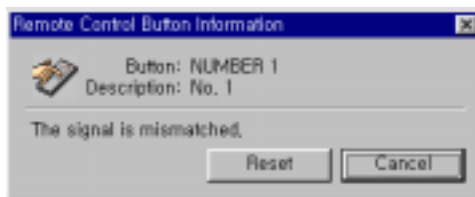
[Figure 4-24] Button setting -2

6. When double clicked remote control signal is normally received, the dialog like [Figure 4-27] will be displayed. And click Set please.



[Figure 4-25] Normal Button Setting

When received signals are not identical in the fifth step, the dialog like [Figure 4-28] is displayed. In this case, click Set and go back to the third step.



[Figure 4-26] Signal is not identical

7. Repeatedly, you can set every button. In case of the shortage of your remote control buttons, set only frequently used buttons.

About OnAir DTV Pro Remote Control

You can see OnAir DTV Pro remote control program and web site like the below dialog.



[Figure 4-27] Remote control Program

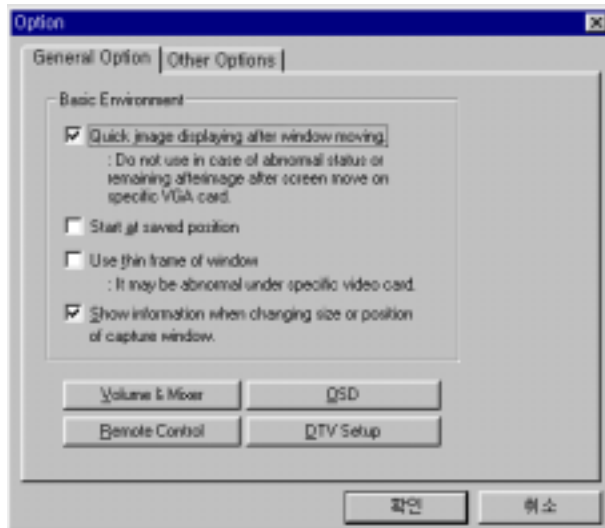
Exit

Ends OnAir DTV Pro Remote Control Program and make remote control window disappeared.

5th chapter OnAir DTV Pro Options

In this chapter, we will check the option menu of OnAir DTV Pro program. Option menu is composed of General Option and Other Options.

General Option



[Figure 5-1] OnAir DTV Pro Option

You can set up Basic Environment, Volume & Mixer, OSD (On Screen Display), Remote Control, and DTV option.

Basic option


Quick image displaying after window moving: Do not use in case of abnormal status or remaining afterimage after screen move on specific VGA card.

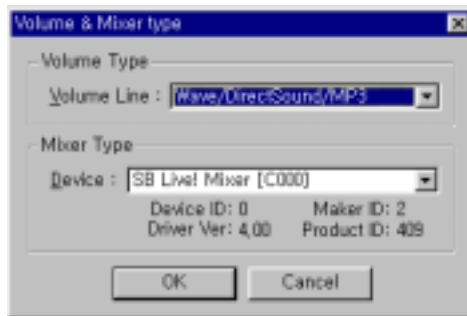
Start at saved position: When OnAir DTV Pro executes, it will start at saved position.

Use thin frame of window: OnAir DTV Pro uses thin frame of window. This function is very useful when, by the mode of "Always top", you work other stuffs in watching TV. It may be abnormal under specific video card.

Display the size and location of capture window : OnAir DTV Pro displays the information of size and location of capture window. Currently, capture function is not supported, so you can see the info of capture window location.

Volume & Mixer

You can decide how to turn up and down the volume of TV. It is closely related to how sound card is connected when OnAir DTV Pro was installed. Pressing  will make the dialog box [Figure5-2] appeared.



[Figure5-2] Volume and Mixer

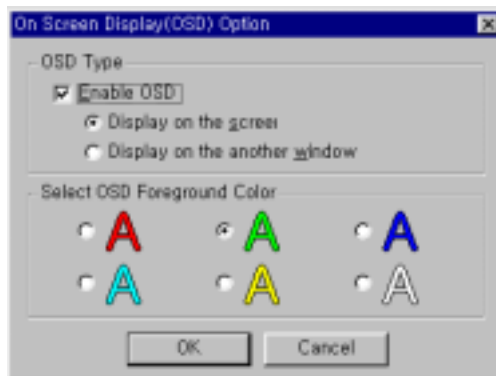
Volume Line

You can set how to turn up and down the volume of TV. Choose Wave as a default and choose “Line-In” when OnAir DTV Pro Line out is connected with Line Out of sound card. Please select “Master”, in case of sound card with unstable volume control of “Line-In”. In this case, system sound is also controlled.

Mixer type: When your sound card has many mixers, at Device, you can select a mixer to use.

On Screen Display

When volume, channel and other functions are changed, the status about the change will be displayed on the screen.



[Figure 5-3] On Screen Display

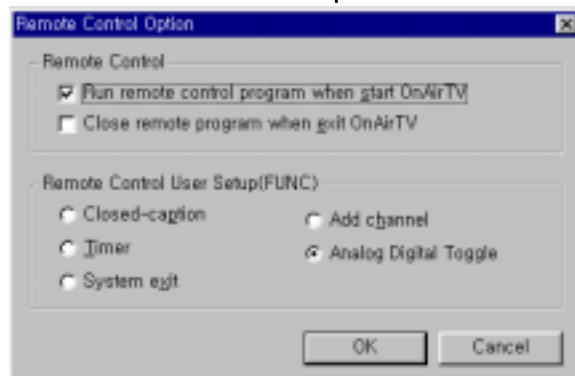
Enable OSD: You can decide whether the status information will be displayed.

Display on the screen: Like the below picture, the status information will be displayed on the main screen.

Display on another window: Like the below picture, the status information will be displayed on the separated window.

Select OSD Foreground Color: you can choose the color of letter in the status information.

Remote Control User Setup



[Figure 5-4] Remote Control User Setup

Run remote control program when start OnAir DTV Pro

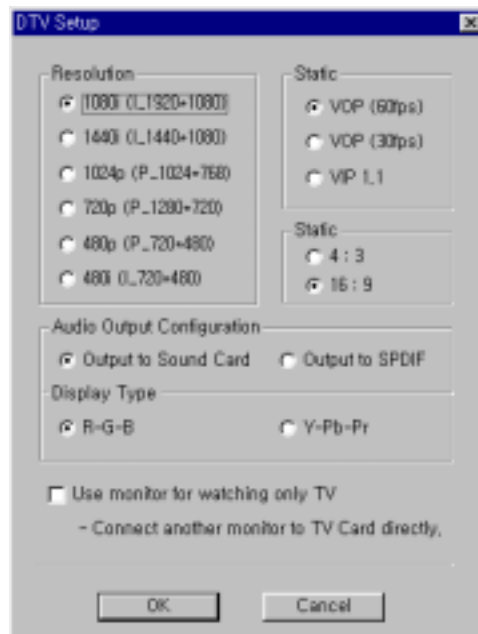
Remote control program starts simultaneously when OnAir DTV Pro program starts.

Close remote program when exit OnAir DTV Pro

Remote control program exits simultaneously when OnAir DTV Pro program exits.

Remote Control User Setup (FUNC) Key perform marked functions like [Figure 5 -4].

DTV Option



[Figure 5-2] HDTV Option

HDTV Resolution : You can select HDTV resolution among 1080i, 1440i, 1024p, 720p, 480p, and 480i.

Overlay Mode : You can select Overlay mode among VOP(60fps), VOP (30fps), and VIP 1.1.

DTV Screen Ratio : The screen ration 4:3 (normal) and 16:9 (wide) is supported.

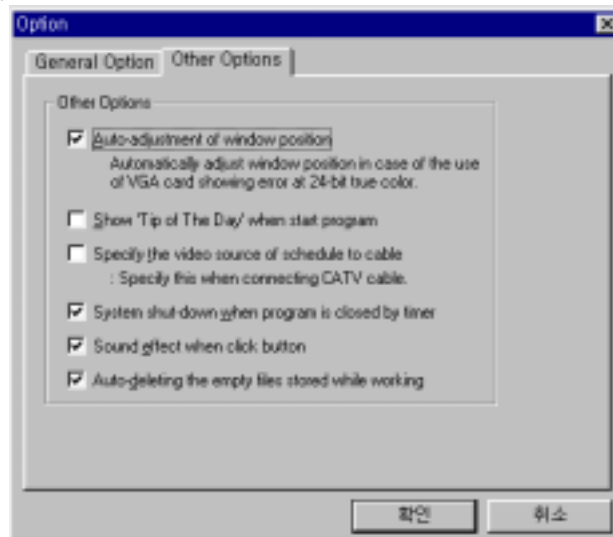
Audio Output : You can set audio is output by soundcard or SPDIF. With speakers supporting SPDIF input, on audio format of TV, Stereo, Dolby ProLogic, and Dolby 5.1

channel are possible.

Video Output : video can be output through R-G-B or Component(Y-Pb-Pr).

Monitor for TV Screen : The additional monitor can be connected with TV card. Which is the setting for Dual Display mode. Please refer to “2nd” chapter, the installment of OnAir DTV Pro Dual Display”

Other Options



[Figure 5-6] Other Options

Auto-Adjustment of window position: Automatically adjust window position in case of the use of VGA card showing error at 24-bit true color.

Show 'Top of The Day' when start program: you can set whether or not the dialog of the added functions when start program.

Specify the video source of schedule to cable: specify this when connecting CATV cable.

System shut-down when program is closed by timer: Please set TV Program and system shut down at fixed time by timer.

Sound effect when click button: you can set the sound effect in click of button.

Auto-deleting the files made in working : You can set make the temporary files in working auto-deleted.