

---

Portable Digital Audio Player

# **MRM-2101**

## User's Manual

# CONTENTS

---

- What is 'MP3'?
- What is 'MP3 player'?
- Contents of Package
- Names of Parts of MRM -2101
- Names of Parts of LCD
- How to Install CD Software?
- How to connect to PC?
- How to use Managing Program?
- How to play MP3 music?

Power On/Off/Key Hold


Play MP3 tracks

MP3 Play Mode

Select Equalize mode

To see memory capacity





## What is 'MP3'?

---

MP3 is a abbreviated form of 'MPEG1 Layer 3' which is the standards of digital data compression technology used for coding audio -visual information. And MP3 file is an audio file made by using the audio data compression technology.



## What is 'MP3 Plaver'?

---

MP3 player is a digital audio player which can decode MP3 files stored in flash memory. With MP3 player, you can enjoy your favorite music which you downloaded from internet and also can record/play back lectures or important business meetings.

## Contents of Package

After purchasing MRM -2101, please make sure that the package includes all of the contents shown below.

In case anything is missing, inquire to the distributor from whom you bought your MRM -2101.

1. Player



2. Earphone



3. USB cable



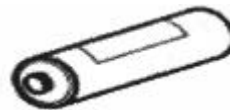
4. Managing Program CD



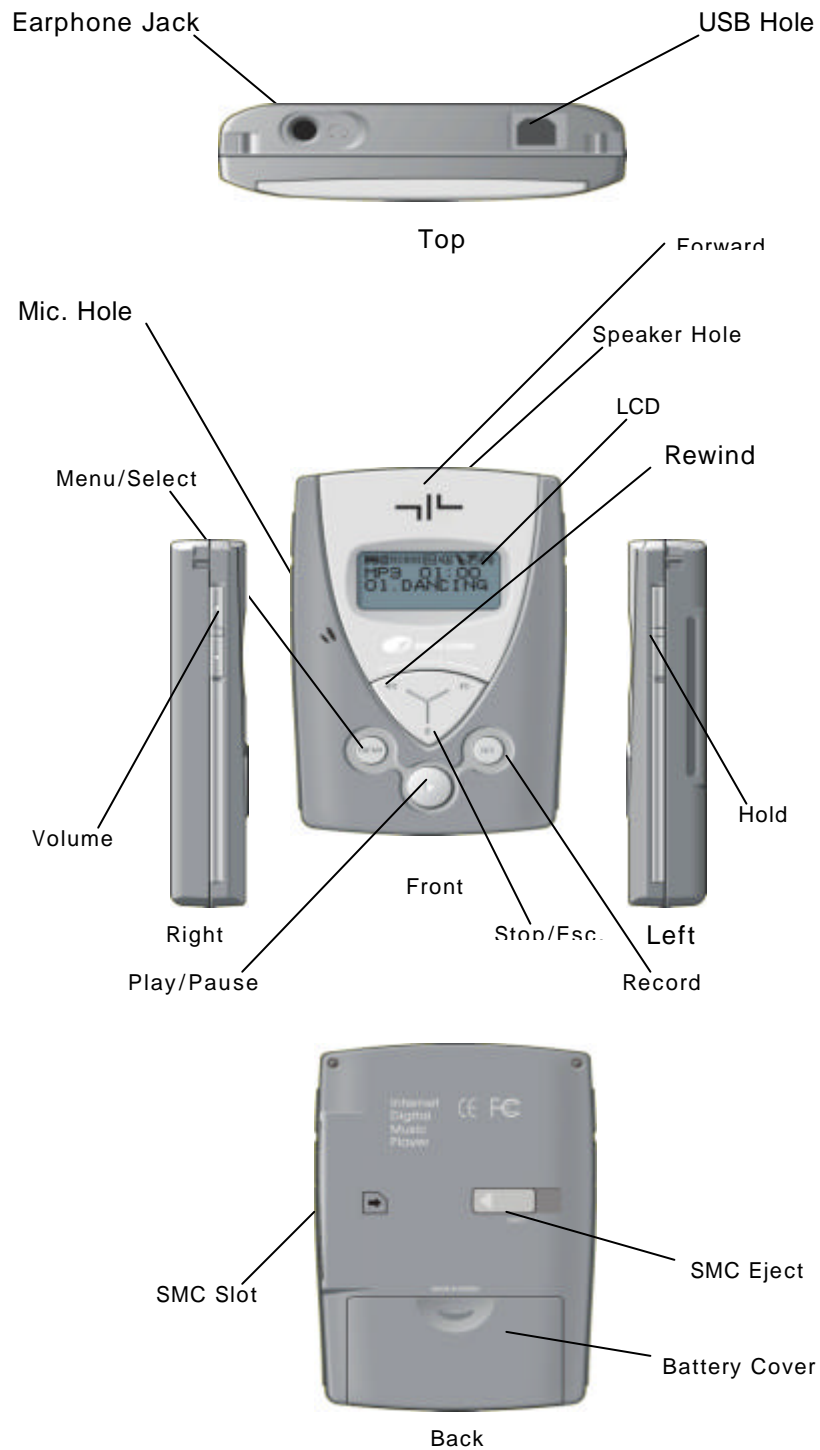
5. User's Manual



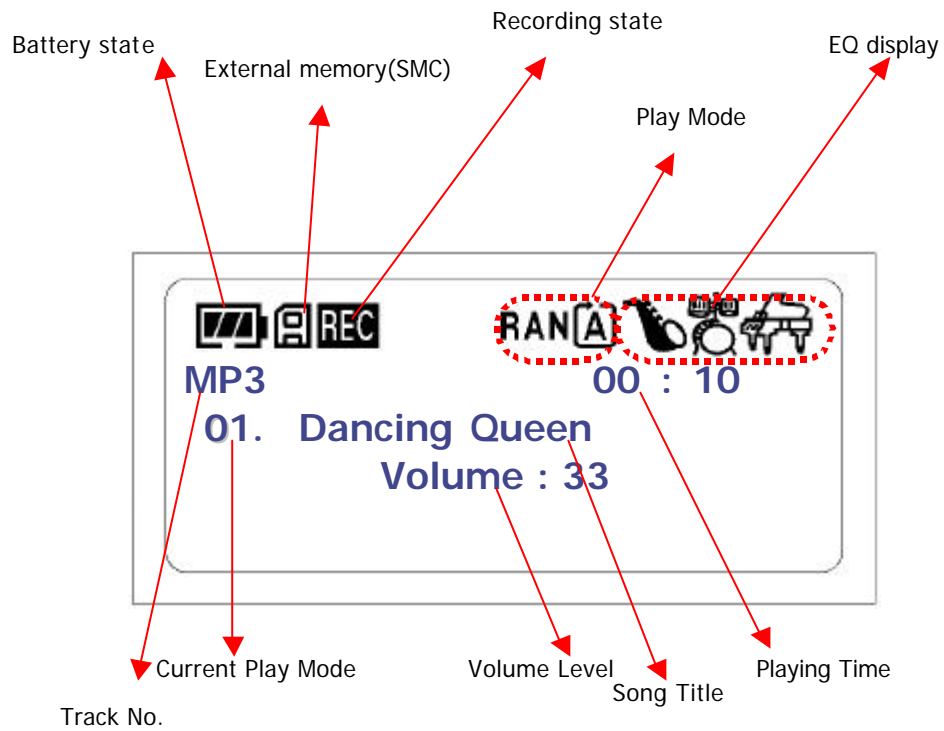
6. 2 AAA Battery



## Contents of Package



## Names of Parts of LCD

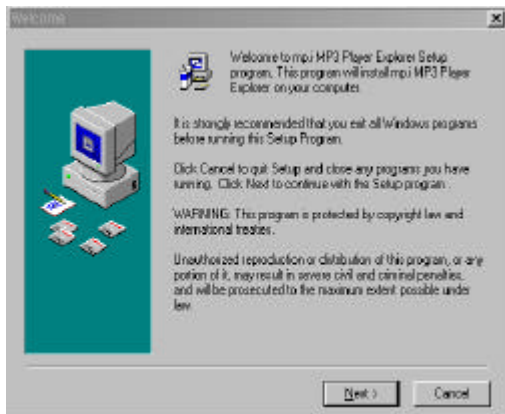


## How to install CD Software?

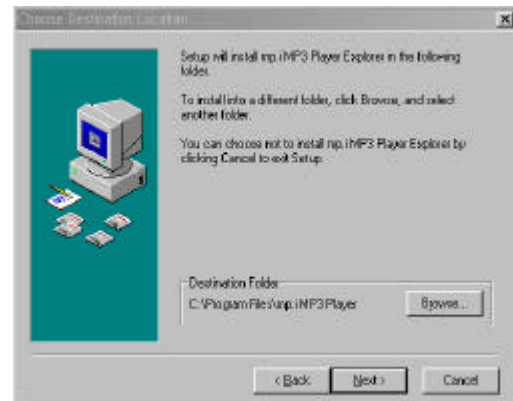
To install CD Software of MRM-2101, place the CD in your CD-ROM drive and start setup program of MRM-2101.

Then follow as below pictures instruct.

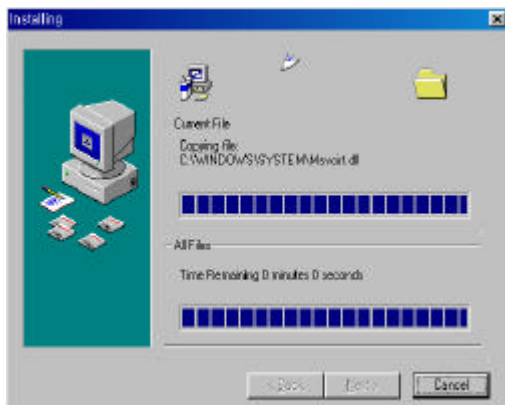
1.



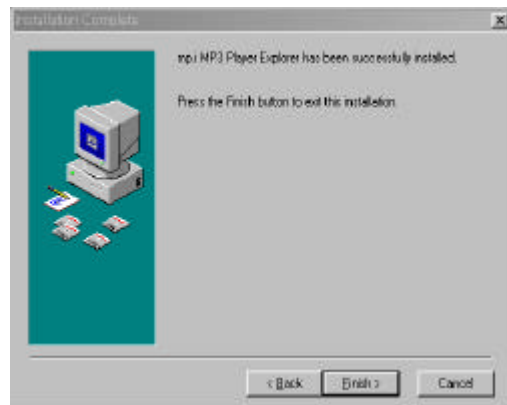
2.



3.



4.

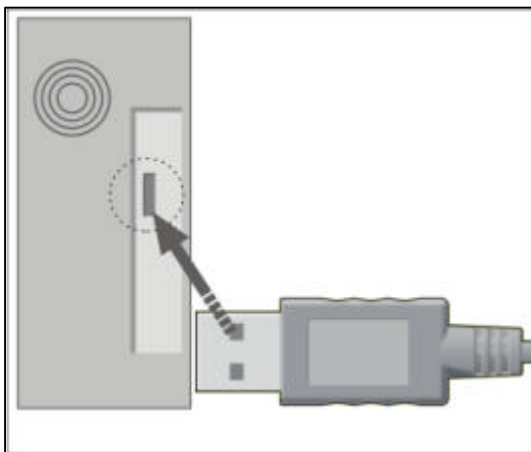
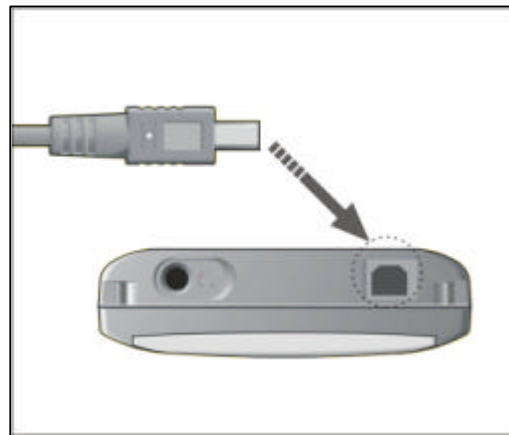


## How to install CD Software?

To download or upload MP3 files between MP3 player and PC, the MP3 Player must be connected to the USB port of your PC.

1. Turn on MRM-2101 by pressing 'PLAY' key.

2. Connect the supplied USB cable to the port of MRM-2101.



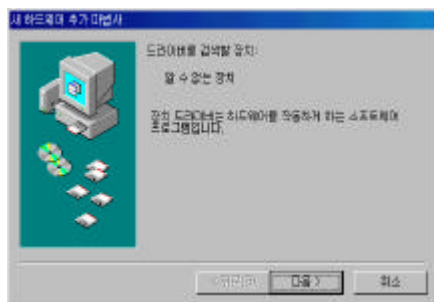
3. Plug the other side of USB cable to the USB



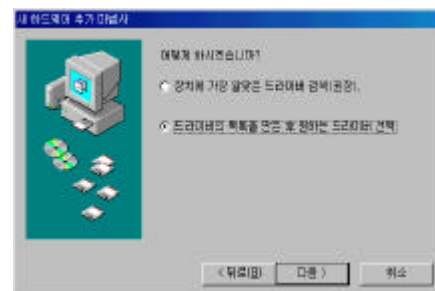
## How to connect to PC?

4. Your PC will recognize the connection of MRM-2101 automatically.  
Then follow as below pictures instruct.

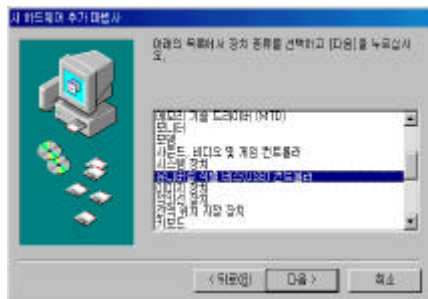
1. Select 'Next'



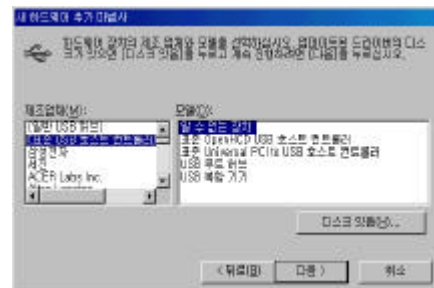
2. Select 'Next'



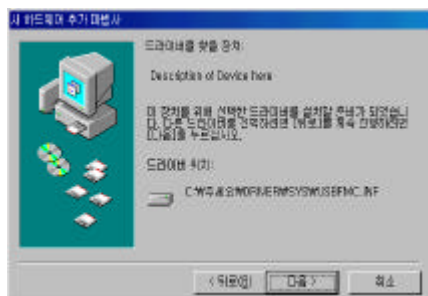
3. Select 'Next'



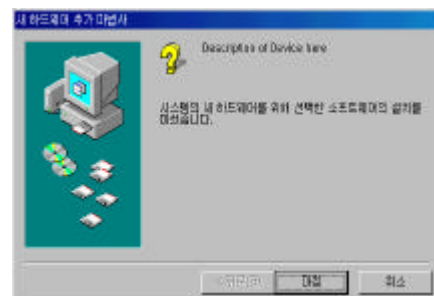
4. Select the CD of MRM -2101



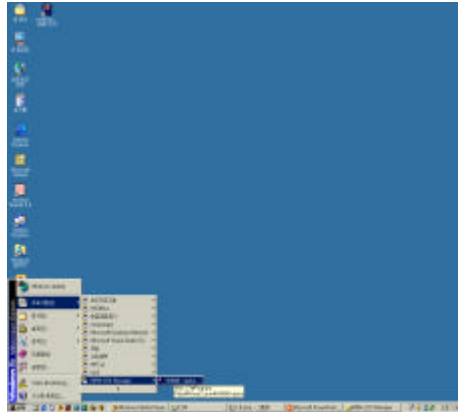
5. Select 'Next'



6. Finish

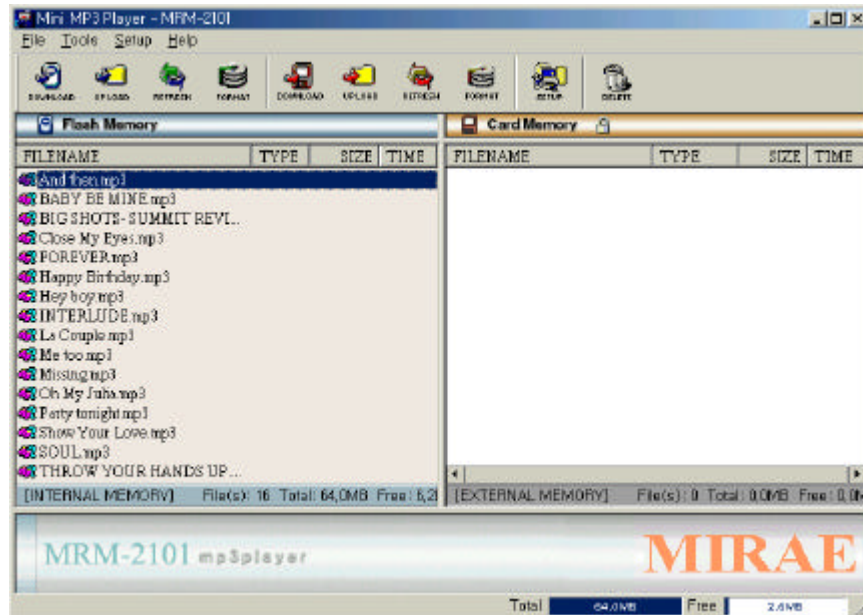


## How to use Managing Program?



1. To enter into the Managing Program of MRM-2101, click the icon of it on the background screen or click [Start] [Program] [MRM-2101 Manager] after the managing program is installed,



Then the window of the Managing Program will be displayed as shown below.



## How to use Managing Program?



### 2. Memory Format

To copy MP3 files in your Internal/External memory, the memory should be formatted first.

To format, select [Tool] [Format] [Internal/External Memory] or click  icon for internal memory or  icon for external memory.



### 3. Download/Upload

#### 1) Download

To download MP3 files from PC to your player, select [File] [Download] [Internal/External Memory] or click  or  icon.

- \* If [Open] window is displayed, choose the songs you desire to download and click [Open] to start download.
- \* Both Built-in flash memory and external memory(SMC) can be used to store other file formats besides MP3 file.

#### 2) Upload

To upload MP3 files from the player to your PC, select [File] [Upload] [Internal/External Memory] after choosing the file(s) you desire to upload to PC or click  or  icon.

## How to use Managing Program?

---

### 4. Refresh

To refresh Internal/External memory, press



or



icon.

### 5. Delete

To delete files, choose the files you desire to delete.

And select [File] [Delete] or click



icon.

## How to Play MP3 music?

### Power On/Off/Key Hold

1. To turn on the power,  
press [PLAY] key.



2. To turn off the power,  
press the [Stop] key  
more than 2 seconds.



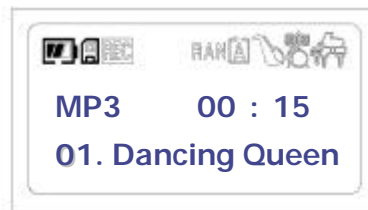
3. To lock keys, switch the  
[Hold] button down at the  
left side of player.



## How to Play MP3 music?

### Play MP3 tracks

1. To play MP3 tracks in internal or external memory, press [Play] key at MP3 mode.



- \* At Voice mode, press [Menu] key and select [Go MP3] to move to MP3 mode.
- \* Tracks in the built-in memory will be played first, followed by those stored in the external memory(SMC).
- \* To pause, press [Play] key again.

2. To move to other tracks, press [Forward] or [Rewind] key



3. Stop/Escape

To stop playing or to go to previous menu or to escape from current menu, press [Stop/Esc] key

4. Forward/Rewind

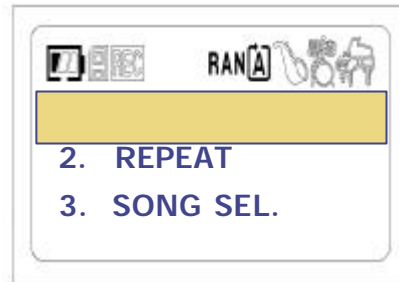
To forward or rewind, press [Forward] or [Rewind] key until you reach the desired section.

## How to Play MP3 music?

### MP3 Play Mode

#### 1. Play 1 time

To play track(s) in internal/ external memory only 1 time, press [Menu] key and select [Play mode] [Play 1 time] Then you can choose the play mode as you wish



- [All tracks] : Play all tracks 1 time. → No icon
- [All random] : Play all tracks at random 1 RAN. →
- [Selected] : Play only selected track(s) 1 time. → No icon

#### 2. Repeat

To play tracks repeatedly, press {Menu} key and select [Play mode] [Repeat] Then you can choose the play mode as you wish.



- [Cur. Track] : Play current track repeatedly. →
- [All tracks] : Play all tracks repeatedly. →
- [All random] : Play all tracks at random repeatedly. →
- [Selected] : Play only selected track(s) repeatedly. →

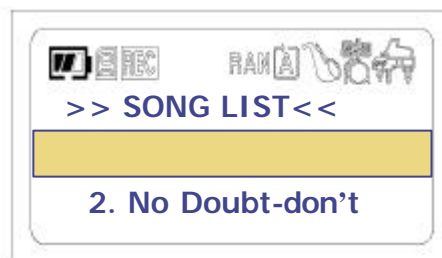
## How to Play MP3 music?

### 3. Song select

To play only the track(s) you desire to play, you should select the track(s) first.

Press [Menu] key, and select [Play mode] [Song Sel.] and select the track(s) by pressing [Menu] key.

\* You can see a ‘¥’ mark at the left side of the song title for the selected songs.



### Select Equalize mode

To change equalize mode, press [Menu] key, and select [EQ] and confirm the mode by pressing [Menu] key. Then the icon will be shown at the top of LCD.



[Normal] : No Icon

[Jazz]



[Rock]



[Class



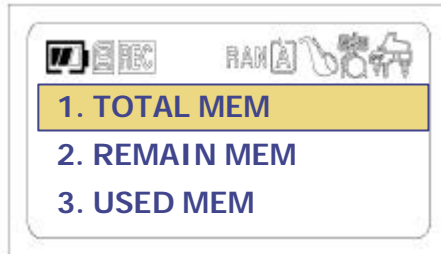
MIRAE COMM Co.,Ltd



## How to Play MP3 music?

To see memory capacity

To see the memory capacity,  
press [Menu] key and select  
[Memory]



[Total Mem] : Show total memory capacity of the player.

[Remain Mem] : Show remained memory capacity.

[Used Mem] : Show used memory size.

### Volume Control

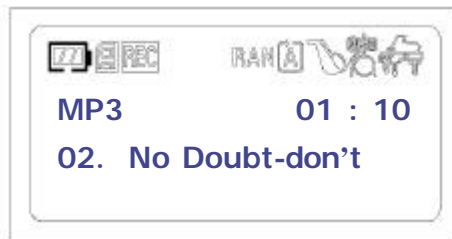
You can change the volume  
level with the volume key  
located at the left side of the  
player



### Low Battery Alerting

If the battery is discharged,  
the battery icon on LCD will  
blink.

Then change the battery.



## How to Record/Play Voice?

### To record Voice

To record voice in Internal/external memory, press [Rec] key more than 2 seconds.

Then the player will start to record immediately and the recording time will be displayed on LCD.



### To play Voice

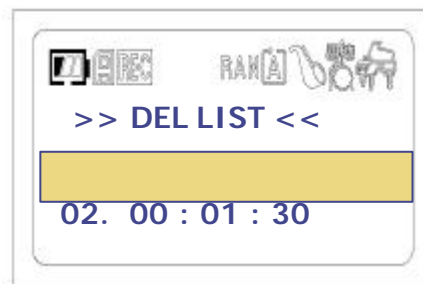
To play recorded voice, select the voice file among the voice list shown on LCD by pressing [Menu] key.



### To delete Voice file

To delete recorded voice file, press [Menu] and select [Voice Del.]

Then select the file you want to delete among the lists show on LCD.



## Troubleshooting

If you experience problems with your player, refer to the below answer on troubleshooting.

Why the player does not work and nothing is displayed on the LCD?	Check battery : General or Rechargeable 1.5V AAA size battery required. Check the polarity(+/-) of the Battery
There is no sound when the play key is pressed	Check that MP3 files are stored in Internal or external memory
The keys of player do not work	Check if the [Hold] key switched down.
Can't download MP3 files	Check the connection of USB cable between PC and player. Check the battery condition
The Smart Media Card can not be inserted or recognized.	Check if the SMC is inserted thoroughly.



# Safety Precaution

Before you use or store the player, please read carefully all the instructions below.

1. Do not subject the player to severe impact or Jarring	Vibration experienced during walking or exercising will not affect the player. However, dropping the player or heavy object on the player may result in damage or sound distortion.
2.Keep the player away from water	If water enters the player, damage may result. If the player comes into contact with water, wipe dry immediately with a dry cloth and call a service center
3. Be careful when storing the set	Avoid placed with high humidity, strong magnetic fields, or extreme temperatures when you store your player or the Smart Media Card.

## FCC Warning Statements

### Interference with Other Devices

Note: This equipment has been tested and found to comply with the limits for a Class B digital device, pursuant to part 15 of the FCC Rules. These limits are designed to provide reasonable protection against harmful interference in a residential installation. This equipment generates, uses and can radiate radio frequency energy and, if not installed and used in accordance with the instructions, may cause harmful interference to radio communications. However, there is no guarantee that interference will not occur in a particular installation. If this equipment does cause harmful interference to radio or television reception, which can be determined by turning the equipment off and on, the user is encouraged to try to correct the interference by one or more of the following measures: - Reorient or relocate the receiving antenna.- Increase the separation between the equipment and receiver. - Connect the equipment into an outlet on a circuit different from that to which the receiver is connected. - Consult the dealer or an experienced radio/TV technician for help. NOTE: You are cautioned that any change or modifications to the equipment not expressly approved by the party responsible for compliance could void your authority to operate such equipment. In case that shielded cables were used on the test, operation manuals shall contain the following statements or their equivalent : NOTE: This unit was tested with shielded cables on the peripheral devices. Shielded cables must be used with the unit to insure compliance.

## Product Specifications

Memory capacity	64MB built-in
External memory slot	1 Slot for SMC(Optional)
PC connection	USB
LCD	Graphic, Back-light
Power	1.5V
CPU	OKI 14MHz, 16Bit
Down/Upload speed	Up to 350KByte
MP3 decoding	32KHz~320KHz
Earphone Output	10 mw/Channel
S/N ratio	More than 90dB
Volume Control	0~40 grade
Battery	AAA size x 2
Dimension/Weight	59 x 85 x 16 mm(W x H x D)
Case	PC
PC S/W	Windows 95/98/2000