

**ELECTROMAGNETIC EMISSIONS COMPLIANCE REPORT
INTENTIONAL RADIATOR CERTIFICATION TO
FCC PART 15 SUBPART C REQUIREMENT**

OF

20-07159 Remote Control (TRANSMITTER)

MODEL No.: 20-07159

BRAND NAME: N/A

FCC ID: PKG07159RC49

REPORT NO.: SZT07111004710-1

ISSUE DATE: November 14, 2007

Prepared for

**MAY CHEONG TOY PRODUCTS FTY LTD
7/F, EAST WING, TSIMSHATSUI CENTRE, 66 MOODY ROAD, TSIMSHATSUI
EAST, KOWLOON, HONGKONG
TEL: 86-769-8775 3128
FAX: 86-769-8775 3123**

Prepared by

**CENTRE TESTING INTERNATIONAL
1F., BUILDING C, HONGWEI INDUSTRIAL ZONE,
BAOAN 70 DISTRICT, SHENZHEN, CHINA
TEL: 86-755-3368 3668
FAX: 86-755-3368 3385**

**This report shall not be reproduced, except in full, without the written approval of
CENTRE TESTING INTERNATIONAL**

VERIFICATION OF COMPLIANCE

Applicant:	MAY CHEONG TOY PRODUCTS FTY LTD 7/F,EAST WING,TSIMSHATSUI CENTRE,66 MODY ROAD,TSIMSHATSUI EAST,KOWLOON,HONGKONG
Product Description:	20-07159Remote Conrol
Brand Name:	N/A
Model Number:	20-07159
Serial Number:	N/A
File Number:	SZT07111004710-1
Date of Test:	November 10,2007 ~ November 13 , 2007

We hereby certify that:

The above equipment was tested by Centre Testing International (CTI), The test data, data evaluation, test procedures, and equipment configurations shown in this report were made in accordance with the procedures given in ANSI C63.4 (2003) and the energy emitted by the sample EUT tested as described in this report is in compliance with conducted and radiated emission limits of FCC Rules Part 15.235

The test results of this report relate only to the tested sample identified in this report.

Approved By



Manager
CENTRE TESTING INTERNATIONAL

TABLE OF CONTENTS

Description	Page
1. GENERAL INFORMATION	4
1.1 PRODUCT DESCRIPTION	4
1.2 RELATED SUBMITTAL(S) / GRANT (S)	4
1.3 TEST METHODOLOGY	4
1.4 TEST FACILITY	4
1.5 SPECIAL ACCESSORIES	4
1.6 EQUIPMENT MODIFICATIONS	4
2. SYSTEM TEST CONFIGURATION	5
2.1 EUT CONFIGURATION	5
2.2 EUT EXERCISE	5
2.3 TEST PROCEDURE	5
2.4 LIMITATION	6
2.5 CONFIGURATION OF TESTED SYSTEM	7
3. SUMMARY OF TEST RESULTS	7
4. DESCRIPTION OF TEST MODES	7
5. CONDUCTED EMISSIONS TEST	7
5.1 MEASUREMENT PROCEDURE:	7
5.2 TEST SET-UP (BLOCK DIAGRAM OF CONFIGURATION)	7
5.3 MEASUREMENT EQUIPMENT USED:	8
5.4 MEASUREMENT RESULT:	8
5.5 CONDUCTED MEASUREMENT PHOTOS:	8
6. RADIATED EMISSION TEST	8
6.1 MEASUREMENT PROCEDURE	8
6.2 TEST SET-UP (BLOCK DIAGRAM OF CONFIGURATION)	9
6.3 MEASUREMENT EQUIPMENT USED:	10
6.4 FIELD STRENGTH CALCULATION	10
6.5 MEASUREMENT RESULT	11
7. OCCUPIED BANDWIDTH	13
7.1 MEASUREMENT PROCEDURE	13
7.2 TEST SET-UP (BLOCK DIAGRAM OF CONFIGURATION)	13
7.3 MEASUREMENT EQUIPMENT USED:	13
7.4 MEASUREMENT RESULTS:	13
APPENDIX 1 PHOTOGRAPHS OF SETUP	14
APPENDIX 2 PHOTOGRAPHS OF EUT	15

1. GENERAL INFORMATION

1.1 Product Description

The TRANSMITTER. Model: 20-07159(referred to as the EUT in this report) The EUT is an short range, lower power, 20-07159Remote control designed as an “ Input Device”. It is designed by way of utilizing the FSK modulation achieves the system operating.

A major technical descriptions of EUT is described as following:

- A). Operation Frequency: 49.86 MHz ,One channel.
- B). Modulation: FSK
- C). Antenna Designation: integral antenna (it can't be moved during the test)
- D). Power Supply: DC 3.0 V by battery.

1.2 Related Submittal(s) / Grant (s)

This submittal(s) (test report) is intended for FCC ID: PKG07159RC49 filing to comply with Section 15.235 of the FCC Part 15, Subpart C Rules. The composite system (receiver) is compliance with Subpart B is authorized under a VoC procedure.

1.3 Test Methodology

Both conducted and radiated testing were performed according to the procedures in ANSI C63.4 (2003). Radiated testing was performed at an antenna to EUT distance 3 meters.

1.4 Test Facility

The 3m Semi-Anechoic chamber test site and conducted measurement facility used to collect the radiated data is located on the address:

1F.,Building C, Hongwei Industrial Zone 70District.,Baoan,Shenzhen,Guangdong,China .

The Test Sites and the Line Conducted labs are constructed and calibrated to meet the FCC requirements in documents ANSI C63.4: 2003 requirements. The test site Registration Number:614926

1.5 Special Accessories

Not available for this EUT intended for grant.

1.6 Equipment Modifications

Not available for this EUT intended for grant.

2. System Test Configuration

2.1 EUT Configuration

The EUT configuration for testing is installed on RF field strength measurement to meet the Commissions requirement and operating in a manner which intends to maximize its emission characteristics in a continuous normal application.

2.2 EUT Exercise

The Transmitter was operated in the normal operating mode. the TX frequency was fixed which was for the purpose of the measurements.

2.3 Test Procedure

2.3.1 Conducted Emissions (Not apply in the report)

The EUT is a placed on as turn table which is 0.8 m above ground plane. According to the requirements in Section 13.1.4.1 of ANSI C63.4-2003. Conducted emissions from the EUT measured in the frequency range between 0.15 MHz and 30MHz using CISPR Quasi-Peak and average detector mode.

2.3.2 Radiated Emissions

The EUT is a placed on as turn table which is 0.8 m above ground plane. The turn table shall rotate 360 degrees to determine the position of maximum emission level. EUT is set 3m away from the receiving antenna which varied from 1m to 4m to find out the highest emission. And also, each emission was to be maximized by changing the polarization of receiving antenna both horizontal and vertical. In order to find out the max. emission, the relative positions of this hand-held transmitter(EUT) was rotated through three orthogonal axes according to the requirements in Section 13.1.4.1 of ANSI C63.4-2003.

2.4 Limitation

(1) Conducted Emission (Not applicable in this report)

According to section 15.207(a) Conducted Emission Limits is as following.

Frequency range MHz	Limits dB(uV)	
	Quasi-peak	Average
0.15 to 0.50	66 to 56	56 to 46
0.50 to 5	56	46
5 to 30	60	50
Note 1.The lower limit shall apply at the transition frequencies 2.The limit decreases linearly with the logarithm of the frequency in the range 0.15 MHz to 0.50 MHz.		

(2) Radiated Emission

- a. The field strength of any emission within this band (section 15.235 frequency between 49.82MHz -49.9MHz) shall not exceed 10000 micro volts/meter at 3 meters. (80dBμV at 3m) The emission limit in this paragraph is based on measurement instrumentation employing an average detector. The provisions in section 15.235 for limiting peak emissions apply.
- b. The field strength of any emissions which appear outside of this band shall not exceed the general radiated emission limits in section 15.209(Intentional Radiators general limit).as below.

Frequency (MHz)	Field strength μV/m	Distance(m)	Field strength at 3m dBμV/m
1.705-30	30	30	29.54
30-88	100	3	40
88-216	150	3	43.5
216-960	200	3	46
Above 960	500	3	54

Remark: 1. Emission level in dBuV/m=20 log (uV/m)

2. Measurement was performed at an antenna to the closed point of EUT distance of meters.

3. Only spurious frequency is permitted to locate within the Restricted Bands specified in provision of § 15.205

4. Emission spurious frequency which appearing within the Restricted Bands specified in provision of §15.205, then the general radiated emission limits in § 15.209 apply.

2.5 Configuration of Test setup

Fig. 2-1 Configuration of Block diagram

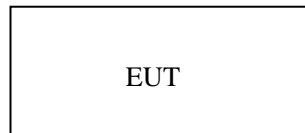


Table 2-1 Equipment Used in Tested System

Item	Equipment	Mfr/Brand	Model/Type No.	Series No.	Note
E-1	Transmitter	N/A	20-07159	N/A	<i>EUT</i>

3. Summary Of Test Results

FCC Rules	Description Of Test	Result
§ 15.207	Conducted Emission	N/A
§ 15.235	Radiated Emission	Compliant
§ 15.235	26 dB Bandwidth	Compliant

4. Description of test modes

1. The EUT has been tested under normal operating condition.
2. The EUT stay in continuous transmitting mode. The channel (49.86MHz) is chosen for testing.

5. Conducted Emissions Test (Not applicable in this report)

5.1 Measurement Procedure:

1. The EUT was placed on a table which is 0.8m above ground plane.
2. Maximum procedure was performed on the six highest emissions to ensure EUT compliance.
3. Repeat above procedures until all frequency measured were complete.

5.2 Test SET-UP (Block Diagram of Configuration)

N/A

5.3 Measurement Equipment Used:

Conducted Emission Test Site # 4					
EQUIPMENT TYPE	MFR	MODEL NUMBER	SERIAL NUMBER	LAST CAL.	CAL DUE.
EMI Receiver	R&S	ESCI	100435	01/29/2007	01/28/2008
LISN	ETS	3816	00060336	06/07/2007	06/06/2008

5.4 Measurement Result: N/A

5.5 Conducted Measurement Photos: N/A

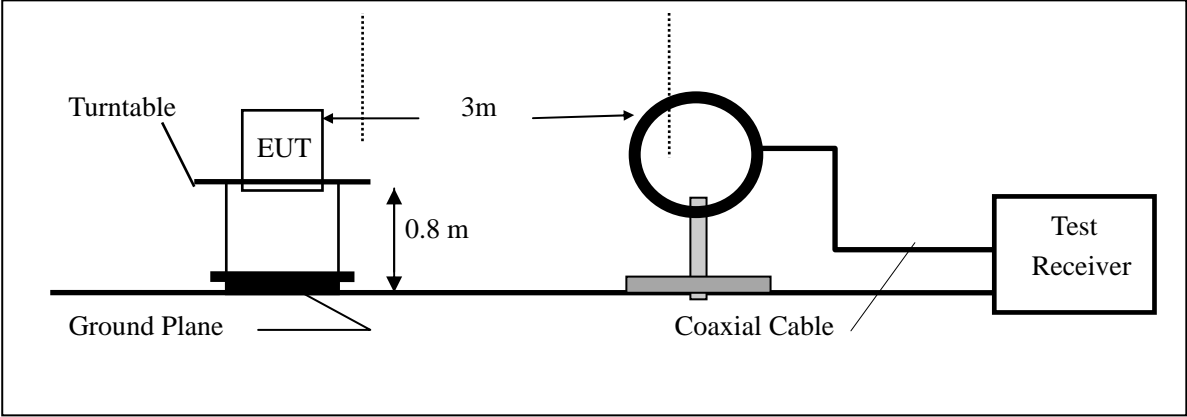
6. Radiated Emission Test

6.1 Measurement Procedure

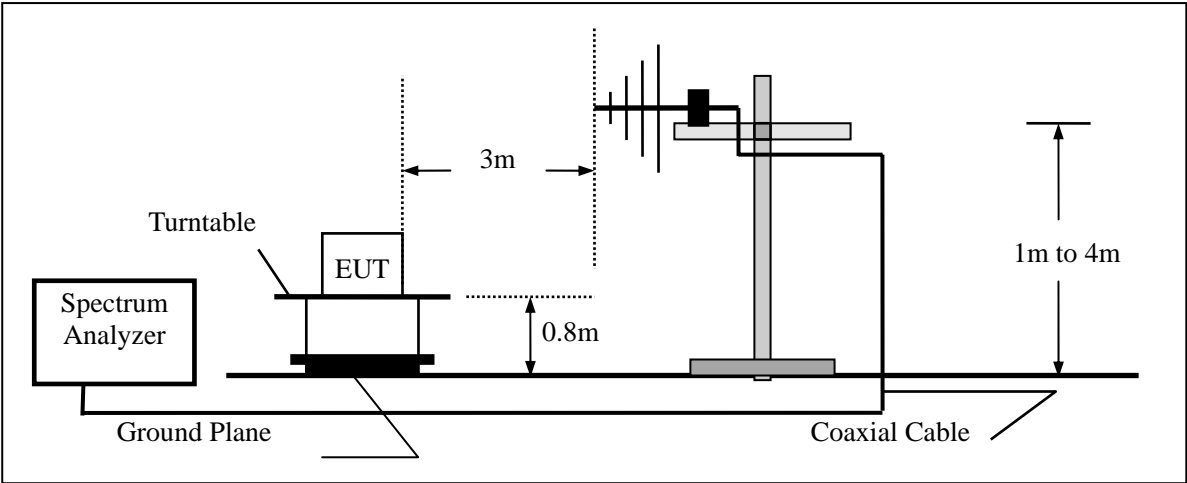
- 1 The EUT was placed on a turn table which is 0.8m above ground plane.
2. Maximum procedure was performed on the twelve highest emissions to ensure EUT compliance.
3. And also, each emission was to be maximized by changing the polarization of receiving antenna both horizontal and vertical.
4. Repeat above procedures until all frequency measured were complete.

6.2 Test SET-UP (Block Diagram of Configuration)

(A) Radiated Emission Test Set-Up, Frequency Below 30MHz



(B) Radiated Emission Test Set-Up, Frequency Below 1000MHz



6.3 Measurement Equipment Used:

Open Area Test Site # 3					
EQUIPMENT TYPE	MFR	MODEL NUMBER	SERIAL NUMBER	LAST CAL.	CAL DUE.
Spectrum Analyzer	Agilent	E4443A	MY46185649	06/29/2007	06/28/2008
Biconilog Antenna	ETS	3142C	920250	05/30/2007	05/29/2008
Multi device Controller	ETS	2090	00057230	06/07/2007	06/06/2008
EMI Receiver	R&S	ESCI	100435	01/29/2007	01/28/2008

6.4 Field Strength Calculation

The field strength is calculated by adding the Antenna Factor and Cable Factor and subtracting the Amplifier Gain and Duty Cycle Correction Factor(if any) from the measured reading. The basic equation with a sample calculation is as follows:

$$CF=AF+CL-AG$$

$$FS = RA + CF$$

Where	FS = Field Strength	CL = Cable Attenuation Factor (Cable Loss)
	RA = Reading Amplitude	AG = Amplifier Gain
	AF = Antenna Factor	

6.5 Measurement Result

Operation Mode: Transmitting Mode Test Date : Nov. 12, 2007
 Fundamental 49.86MHz Test By: Forrest lei
 Frequency:
 Temperature : 22 Pol: Horizontal
 Humidity : 58 %

Freq. (MHz)	Ant.Pol. H/V	DetectorMode (PK/AV)	Reading (dBuV)	Factor CF(dB)	Limit3m (dBuV/m)	Safe Margin (dB)	Note
49.860	H	Peak	44.53	9.26	80.00	-26.21	F
99.510	H	Peak	14.07	10.4	43.5	-19.03	E
298.366	H	Peak	9.16	15.76	46	-21.08	E
453.566	H	Peak	8.92	19.21	46.00	-17.87	H
523.160	H	Peak	8.69	18.49	46.00	-18.82	H
621.700	H	Peak	9.12	23.12	46.00	-13.76	H
697.683	H	Peak	8.90	24.67	46.00	-12.43	H

Remark :

- (1) Measuring frequencies from 25 MHz to the 1GHz.
- (2) "F" denotes fundamental frequency; "H" denotes spurious frequency. "E" denotes band edge frequency.
- (3) * denotes emission frequency which appearing within the Restricted Bands specified in provision of 15.205, then the general radiated emission limits in 15.209 apply.
- (4) Datas of measurement within this frequency range shown " - " in the table above means the reading of emissions are attenuated more than 20dB below the permissible limits or the field strength is too small to be measured.
- (5) The IF bandwidth of EMI Test Receiver between 25MHz to 30MHz was 9KHz; 30MHz to 1GHz was 120KHz.

Operation Mode:	Transmitting Mode	Test Date :	Nov. 12, 2007
Fundamental Frequency:	49.86 MHz	Test By:	Forrest lei
Temperature :	22	Pol:	Vertical
Humidity :	58 %		

Freq. (MHz)	Ant.Pol. H/V	DetectorMode (PK/AV)	Reading (dBUV)	Factor CF(dB)	Limit3m (dBUV/m)	Safe Margin (dB)	Note
49.860	V	Peak	64.69	9.26	80.00	-6.05	F
99.510	V	QP	30	10.4	43.5	-3.1	E
379.200	V	Peak	8.84	18.12	46	-19.04	E
506.910	V	Peak	8.80	20.18	46.00	-17.02	H
633.016	V	Peak	9.19	23.28	46.00	-13.53	H
704.150	V	Peak	9.06	24.72	46.00	-12.22	H
775.733	V	Peak	9.45	24.86	46.00	-11.69	H

Remark :

- (1) Measuring frequencies from 25 MHz to the 1GHz.
- (2) “F” denotes fundamental frequency; “H” denotes spurious frequency. “E” denotes band edge frequency.
- (3) * denotes emission frequency which appearing within the Restricted Bands specified in provision of 15.205, then the general radiated emission limits in 15.209 apply.
- (4) Datas of measurement within this frequency range shown “ - ” in the table above means the reading of emissions are attenuated more than 20dB below the permissible limits or the field strength is too small to be measured.
- (5) The IF bandwidth of EMI Test Receiver between 25MHz to 30MHz was 9KHz; 30MHz to 1GHz was 120KHz.

7. Occupied Bandwidth

7.1 Measurement Procedure

1. The EUT was placed on a turn table which is 0.8m above ground plane.
2. Set EUT as normal operation
3. Set SPA Center Frequency = fundamental frequency , RBW=1kHz,VBW= 10KHz, Span =100KHz.
4. Set SPA Max hold. Mark peak, -26dB.

7.2 Test SET-UP (Block Diagram of Configuration)

Same as 4.2 Radiated Emission Measurement.

7.3 Measurement Equipment Used:

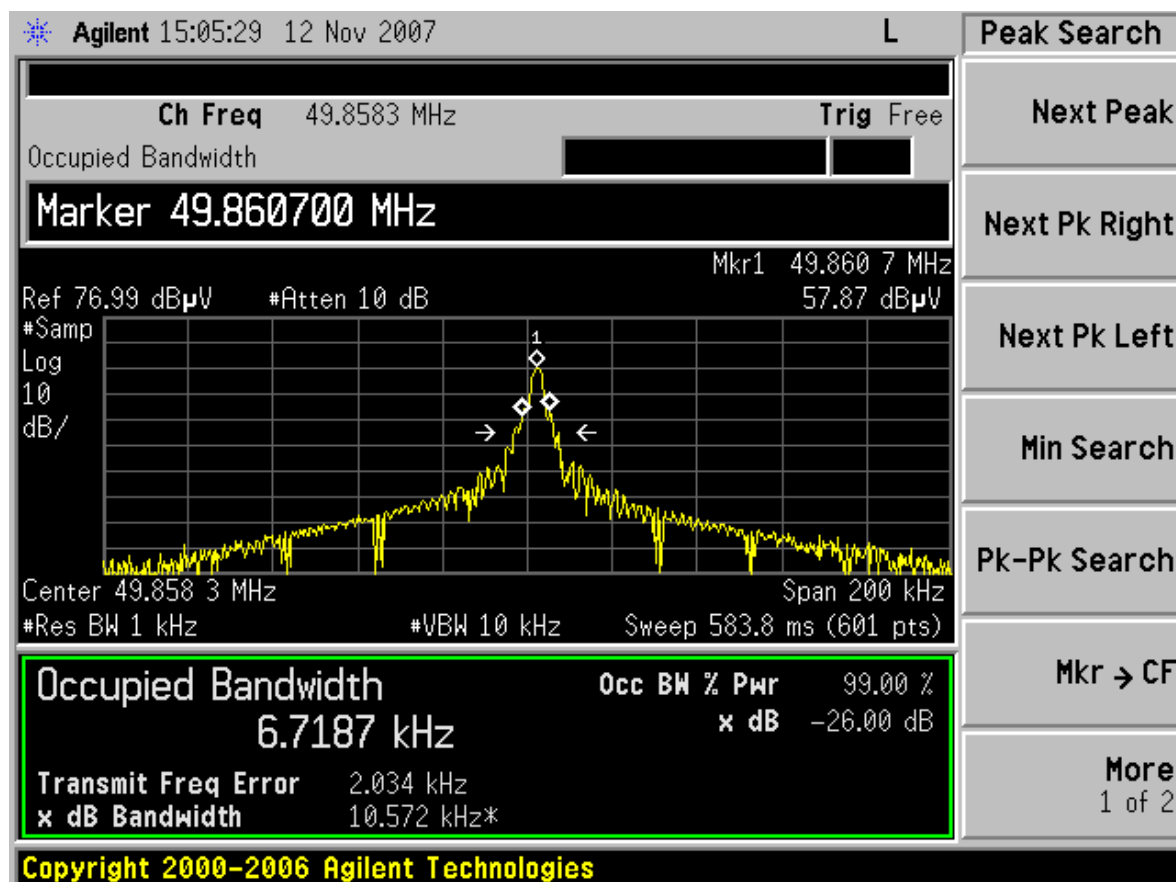
Same as 4.2 Radiated Emission Measurement.

7.4 Measurement Results:

26dB bandwidth = 10.572 KHz on channel 1.

Refer to attached data chart.

26dB Band Width Test Data:



APPENDIX 1 PHOTOGRAPHS OF SETUP

RADIATED EMISSION TEST SETUP



APPENDIX 2 PHOTOGRAPHS OF EUT

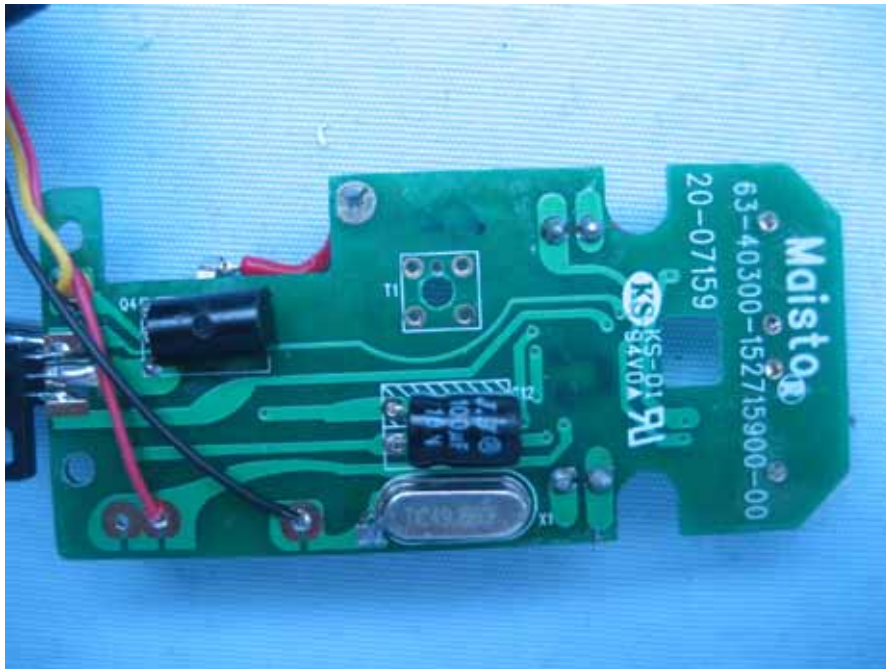
TOP VIEW OF SAMPLE



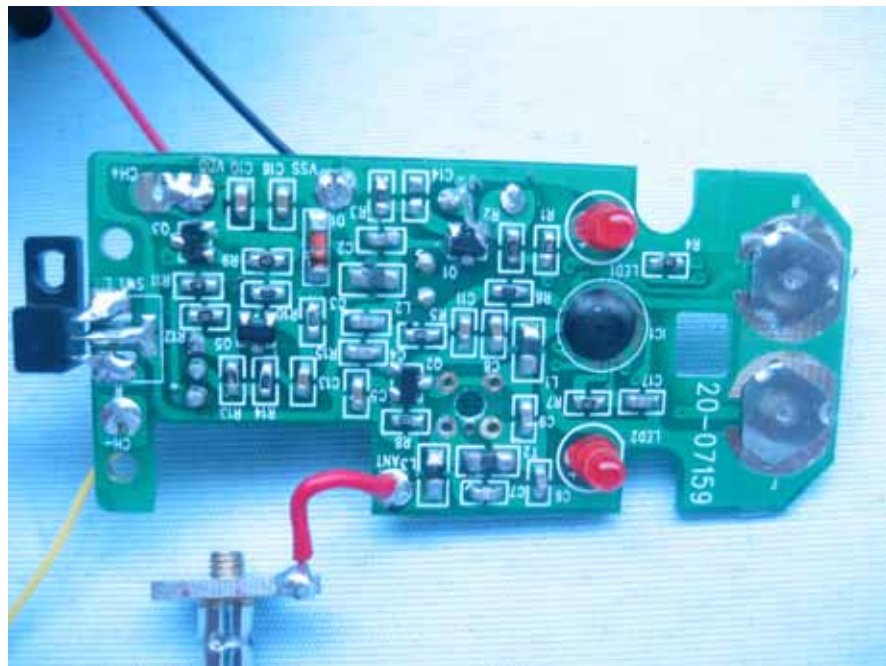
BOTTOM VIEW OF SAMPLE



INTERIOR PHOTO OF TX – 1



INTERIOR PHOTO OF TX – 2



-----End of the report-----