

HYUNDAI CALIBRATION & CERTIFICATION TECH. CO., LTD.

Product Compliance Division, EMC Team
SAN 136-1, AMI-RI, BUBAL-EUP, ICHEON-SI, KYOUNKI-DO, 467-701, KOREA
TEL : +82 31 639 8518 FAX : +82 31 639 8525

CERTIFICATION

Manufacture;
HYUNDAI IMAGEQUEST CO., LTD.

**SAN 136-1, AMI-RI, BUBAL-EUP, ICHEON-SI,
KYOUNKI-DO, 467-701, KOREA**

HYUNDAI IMAGEQUEST FRN : 0005-8664-39

Date of Issue : August 08, 2005

Test Report No.: HCT-F05-0801

**Test Site: HYUNDAI CALIBRATION & CERTIFICATION
TECHNOLOGIES CO., LTD.**

HCT FRN : 0005-8664-21

FCC ID :

PJIL19C0D072

MODEL /TYPE:

Q90U/L19C00000

Rule Part(s):	Part 15 & 2
Equipment Class:	FCC Class B Peripheral Device(JBP)
Standard(s):	FCC Class B: (CISPR 22)
EUT Type:	19" LCD Monitor
Max. Resolution(s):	Analog:1280 X 1024(@80.0KHz/75Hz), Digital: 1280 X 1024(@63.9KHz/60Hz)
Model(s):	Q90U
Port/Connector(s)	15-pin D-sub VGA, 20-pin DVI-D (Digital RGB) connector, AUDIO IN/OUT.
LCD Panel	Samsung Electronics (LTM190EX-L01)

This equipment has been shown to be in compliance with the applicable technical standards as indicated in the measurement report and was tested in accordance with the measurement procedures specified in ANSI C63.4-2003

I attest to the accuracy of data. All measurements reported herein were performed by me or were made under my supervision and are correct to the best of my knowledge and belief. I assume full responsibility for the completeness of these measurements and vouch for the qualifications of all persons taking them.



Report prepared by : Ki-Soo Kim
Manager of EMC Tech. Part



TABLE OF CONTENTS

PAGE

REPORT COVER	1
TABLE OF CONTENTS	2
1.1 SCOPE	3
2.1 INTRODUCTION (SITE DESCRIPTION)	4
3.1 PRODUCTION INFORMATION	5-6
4.1 DESCRIPTION OF TESTS (CONDUCTED)	7
4.3 DESCRIPTION OF TESTS (RADIATED)	8
5.1 LIST OF SUPPORT EQUIPMENT	9-11
6.1 TEST DATA (CONDUCTED)	12-20
7.1 TEST DATA (RADIATED)	21-22
8.1 SAMPLE CALCULATIONS	23
9.1 TEST EQUIPMENT	24
10.1 TEST SOFTWARE USED	25
11.1 CONCLUSION	26

ATTACHMENT A :	FCC ID LABEL & LOCATION
ATTACHMENT B :	EXTERNAL PHOTOGRAPHS
ATTACHMENT C :	TEST SETUP PHOTOGRAPHS
ATTACHMENT D :	INTERNAL PHOTOGRAPHS

MEASUREMENT REPORT

1.1 Scope

Measurement and determination of electromagnetic emissions (EME) of radio frequency devices including intentional and/or unintentional radiators for compliance with the technical rules and regulations of the Federal Communications Commission.

Applicant Name:	HYUNDAI IMAGEQUEST
Address:	SAN 136-1, AMI-RI , BUBAL-EUP, ICHEON-SI, KYOUNKI-DO, 467-701,KOREA

- **FCC ID : PJIL19C0D072**
- Equipment Class: FCC Class B Peripheral Device (JBP)
- EUT Type: 19" LCD MONITOR
- Model(s): Q90U
- LCD Panel: Samsung Electronics (LTM190EX-L01)
- Max. Resolution: Analog:1280 X 1024(@80.0KHz/75Hz), Digital: 1280 X 1024(@63.9KHz/60Hz)
- Frequency Range: V-Sync: 56Hz – 75Hz , H-Sync: 31KHz – 80KHz
- Cable(s): Shielded D-Sub (with ferrite on both ends), Shielded DVI-D (with ferrite on both ends)
, Shielded AUDIO (with ferrite on both ends)
- Power Cord: Unshielded
- Rule Part(s): FCC Part 15 Subpart B
- Test Procedure(s): ANSI C63.4 (2003)
- Dates of Tests: July21, 2005 ~ July 26, 2005
- Place of Tests: 254-1,MAEKOK-RI,HOBUP-MYUN,ICHON-SI,KYOUNGKI-DO,467-701,KOREA

2.1 INTRODUCTION

The measurement procedure described in American National Standard for Methods of Measurement of Radio-Noise Emissions from Low-Voltage Electrical and Electronic Equipment in the Range of 9kHz to 40GHz (ANSI C63.4-2001) was used in determining radiated and conducted emissions emanating from **HYUNDAI IMAGEQUEST CO.,LTD. 19-inch LCD Monitor FCC ID: PJIL19C0D072**

The open area test site and conducted measurement facility used to collect the radiated data are located at the 254-1, MAEKOK-RI, HOBUP-MYUN, ICHON-SI, KYOUNGKI-DO, 467-701, KOREA. The site is constructed in conformance with the requirements of ANSI C63.4 and CISPR Publication 22. Detailed description of test facility was submitted to the Commission and accepted dated July 23, 2003 (Confirmation Number: EA90661)

3.1 PRODUCT INFORMATION

3.2 Equipment Description

Equipment Under Test (EUT) is the **HYUNDAI IMAGEQUEST CO.,Ltd. (Model : Q90U) 19-inch LCD Monitor**

FCC ID: : PJIL19C0D072

Maximum Resolution(s) : Analog:1280 X 1024(@80.0KHz/75Hz),
Digital: 1280 X 1024(@63.9KHz/60Hz)

Frequency Range(s): H-Sync: 31KHz – 80KHz
V-Sync: 56Hz – 75 Hz

Pixel Pitch: 0.294mm

Power Supply: AC 100-240V 50/ 60Hz 1.0A

Power Cord: *Unshielded* AC power cord

Port(s)/Input Connector(s): 15-pin D-sub VGA connector, 20-pin DVI-D connector, AUDIO IN/OUT,

Cable(s) : Shielded D-Sub (with ferrite on both ends), Shielded DVI-D (with ferrite on both ends),
Shielded AUDIO (with ferrite on both ends)

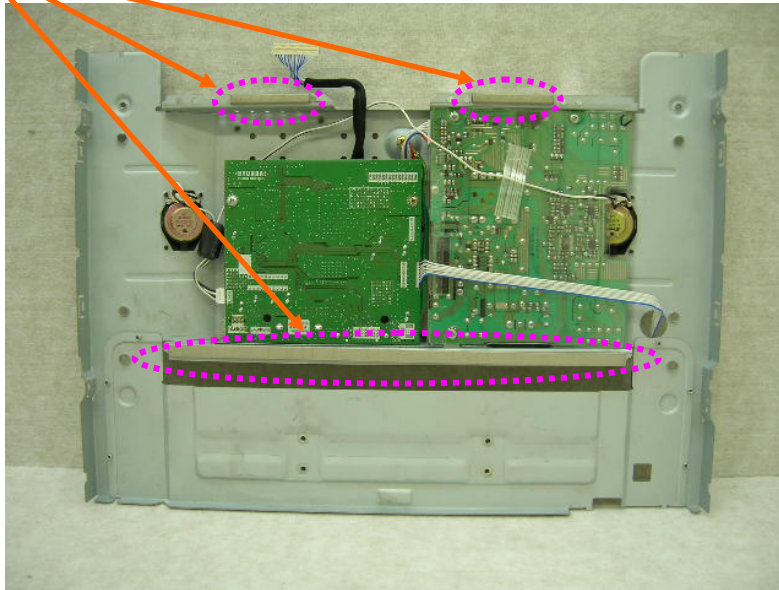
Dimensions (W×H×D): 414×433×172mm(W×H×D)

Weight (Net): 5.4Kg unpacked

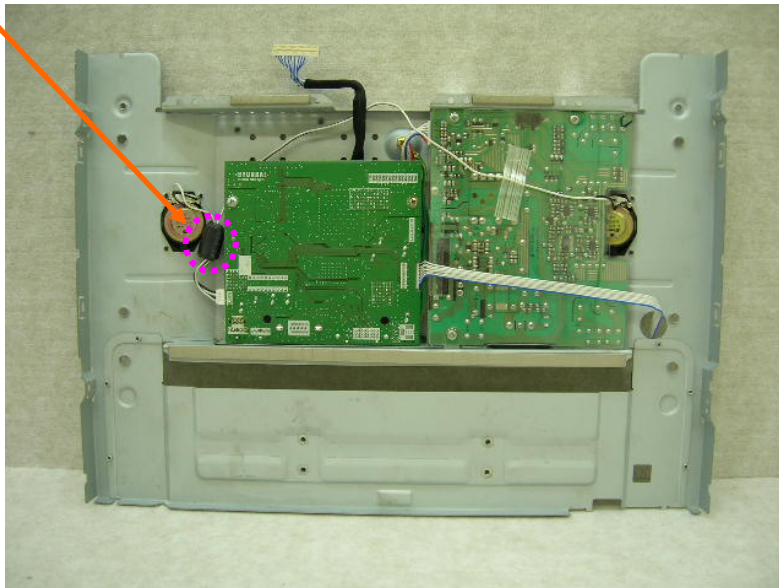
EMI Suppression Devices:

Modifications were made to the device. Please refer to the next page.

1. Attach a gasket on the main frame to contact the lcd panel.



2. Apply a ferriye core to the speaker cable.



4.1 Description of Tests(Conducted)

4.2 Powerline Conducted RFI (150kHz- 30MHz)

The power line conducted RFI measurements were performed according to CISPR 22.

The EUT was placed on a non-conducting 1.0 by 1.5 meter table which is 0.8 meters in height and 0.40 meters away from the vertical wall of the shielded enclosure. Power to the EUT is provided through a Rohde & Schwarz 50 Ω / 50 μ H Line Impedance Stabilization Network (LISN) and the support equipment through a separate Solar 50 Ω / 50 μ H Line- Conducted Test Facility LISN. Sufficient time for the EUT, support equipment, and test equipment were allowed in order for them to warm up to their normal operating condition. The RF output of the LISN was connected to the spectrum analyzer to determine the frequency producing the maximum EME. The spectrum was scanned from 150kHz to 30 MHz. Each maximum EME was remeasured using an EMI receiver. The detector function of the receiver was set to CISPR quasi- peak and average mode with the bandwidth set to 9 kHz. Each emission was maximized consistent with the typical applications by varying the configuration of the test sample. Interface cables were connected to the available interface ports of the test unit. The effect of varying the position of cables was investigated to find the configuration that produces maximum Diagram emission. Excess cable lengths were bundled at the center with 30- 40cm. in length. The worst-case configuration is noted in the test report and the photographs are attached. Each EME reported was calibrated using the Rohde & Schwarz SMX signal generator and are listed on Table 1. RFI Conducted FCC Class B

RFI CONDUCTED	CISPR 22 CLASS B Limits dB(uV/m)	
	CISPR 22 Quasi-Peak	CISPR 22 Average
150kHz - 0.5MHz	66-56**	56-46**
0.5MHz - 5MHz	56	46
5MHz - 30MHz	60	50
**Limits decreases linearly with the logarithm of frequency		

Table 1. RFI Conducted Limits

4.3 Description of Tests(Radiated)

Radiated Emissions

Preliminary measurements were made indoors at 1 meter using broadband antennas, broadband amplifier, and spectrum analyzer to determine the frequency producing the maximum EME. Appropriate precaution was taken to ensure that all EME from the EUT were maximized and investigated. The spectrum was scanned from 30 to 300 MHz using biconical antenna, 300 to 1000 MHz using log- periodic antenna, and above 1 GHz using linearly polarized horn antennas. Final measurements were made outdoors at 10-meter test range using Dipole antennas and EMI receiver. For frequencies above 1 GHz, horn antennas were used. Sufficient time for the EUT, support equipment, and test equipment were allowed in order for them to warm up to their normal operating condition. The EMI receiver detector function was set to CISPR quasi-peak mode and the bandwidth of the receiver was set to 120 kHz. The EUT, support equipment, and interconnecting cables were arranged to the configuration that produces the maximum EME emission found during preliminary scan. The turntable containing the system was rotated; the antenna height was varied 1 to 4 meters and stopped at the azimuth or height producing the maximum emission. Horizontal and vertical antenna polarizations were checked. Each emission was maximized by: varying the mode of operation or resolution; clock or data exchange speed; scrolling H pattern to the EUT and/ or support equipment, and powering the monitor the computer aux AC outlet, if applicable; and changing the polarity of the antenna, whichever determined the worst-case emission.

ITE Radiated Limits			
Frequency (MHz)	FCC Limit @ 3m. Quasi-Peak dB[μV/m]	FCC Limit @ 10m.* Quasi – Peak dB [μV/m]	CISPR Limit @ 10m. Quasi-Peak dB [μV/m]
30-88	40.0	29.5	30.0
88-216	43.5	33.0	30.0
216-230	46.0	35.6	30.0
230-960	46.0	35.6	37.0
960-1000	54.0	43.5	37.0
> 1000	54.0	43.5	No Specified Limit
* Limit extrapolated 20 dB/decade			

Table 2. Radiated Class B limits @ 10-meters

5.1 Support Equipment Used

DEVICE TYPE	MANUFACTURER	MODEL NUMBER	FCC ID / DoC	CONNECTED TO
LCD MONITOR (EUT)	HYUNDAI IMAGEQUEST CO., LTD.	Q90U	PJIL19C0D072	P.C
P.C	H/P	HP Pavilion 8921	DoC	N/A
KEY BOARD	H/P	5181	DoC	P.C
MOUSE	Microsoft	IntelliMouse optical USB and PS/2 Compatible	DoC	P.C
SERIAL MOUSE	Logitech	M-M28	DoC	P.C
PRINTER	H/P	C4569A	DoC	P.C
Headset	HYUNDAI	JPC-914MV	DoC	EUT
USB Memory	UNIWIDE	NEO FLASH 2.0	DoC	EUT

5.2 Cable Description

		Power Cord Shielded (Y/N)	I/O Cable Shielded (Y/N)	Length (M)
LCD Monitor (EUT)	Power	N	N/A	1.8(P)
	D Sub	N/A	Y	1.8(D)
	DVI	N/A	Y	1.8(D)
	Audio in	N/A	Y	1.8(D)
	Audio out	N/A	Y	2.7(D)
	USB interface	N/A	Y	1.8(D)
PC		N	N/A	1.8(P)
Key Board		N/A	Y	1.8(D)
Mouse		N/A	Y	1.8(D)
Serial Mouse		N/A	Y	1.8(D)
Printer		N	Y	1.8(P,D)
Headset		N/A	Y	2.7(D)

The marked "(D)" means the Data Cable and "(P)" means the Power Cable.

5.3 Noise Suppression Parts on Cable. (I/O CABLE)

		Ferrite Bead (Y/N)	Location	Metal Hood (Y/N)	Location
LCD Monitor (EUT)	D Sub	Y	BOTH END	Y	BOTH END
	DVI	Y	BOTH END	Y	BOTH END
	Audio in	Y	BOTH END	Y	BOTH END
	Audio out	Y	EUT END	Y	EUT END
	USB interface	Y	BOTH END	Y	BOTH END
PC		N	N/A	N	N/A
Key Board		N	N/A	Y	PC END
Mouse		Y	PC END	Y	PC END
Serial Mouse		N	N/A	Y	PC END
Printer		N	N/A	Y	BOTH END
Headset		Y	EUT END	Y	EUT END

6.1 LINE-CONDUCTED TEST DATA

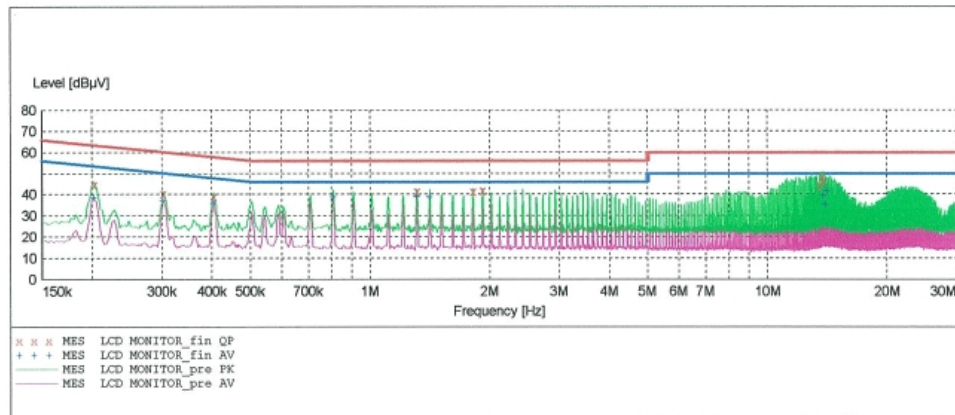
HCT

EMC TEST LAB

EUT: Q90U
Manufacturer: HYUNDAI IMAGEQUEST
Operating Condition: 1280 X 1024 75Hz
Test Site: SHIELD ROOM
Operator: GS,KIM
Test Specification: CISPR 22 CLASS B
Comment: H

SCAN TABLE: "CISPR 22 Voltage"

Short Description:				CISPR 22 Voltage			
Start	Stop	Step	Detector	Meas. Time	IF Bandw.	Transducer	
Frequency	Frequency	Width					
150.1 kHz	500.0 kHz	2.5 kHz	MaxPeak	10.0 ms	9 kHz	None	
			Average				
500.0 kHz	5.0 MHz	5.0 kHz	MaxPeak	10.0 ms	9 kHz	None	
			Average				
5.0 MHz	30.0 MHz	5.0 kHz	MaxPeak	10.0 ms	9 kHz	None	
			Average				



MEASUREMENT RESULT: "LCD MONITOR_fin QP"

7/21/2005 7:32PM

Frequency MHz	Level dBμV	Transd dB	Limit dBμV	Margin dB	Line	PE
0.202600	44.90	10.1	64	18.6	---	---
0.302600	40.60	10.1	60	19.5	---	---
0.405100	39.20	10.1	58	18.5	---	---
1.315000	41.60	10.2	56	14.4	---	---
1.820000	41.40	10.3	56	14.6	---	---
1.920000	41.90	10.3	56	14.1	---	---
13.545000	44.30	10.5	60	15.7	---	---
13.750000	48.60	10.5	60	11.4	---	---
13.850000	46.50	10.5	60	13.5	---	---

MEASUREMENT RESULT: "LCD MONITOR_fin AV"

7/21/2005 7:32PM

Frequency MHz	Level dBμV	Transd dB	Limit dBμV	Margin dB	Line	PE
0.202600	38.60	10.1	54	14.9	---	---
0.302600	37.30	10.1	50	12.8	---	---
0.405100	35.90	10.1	48	11.9	---	---
0.810000	38.70	10.2	46	7.3	---	---
1.315000	38.90	10.2	46	7.1	---	---
1.415000	38.80	10.2	46	7.2	---	---
13.850000	39.40	10.5	50	10.6	---	---
14.050000	35.10	10.5	50	14.9	---	---
14.155000	41.40	10.5	50	8.6	---	---

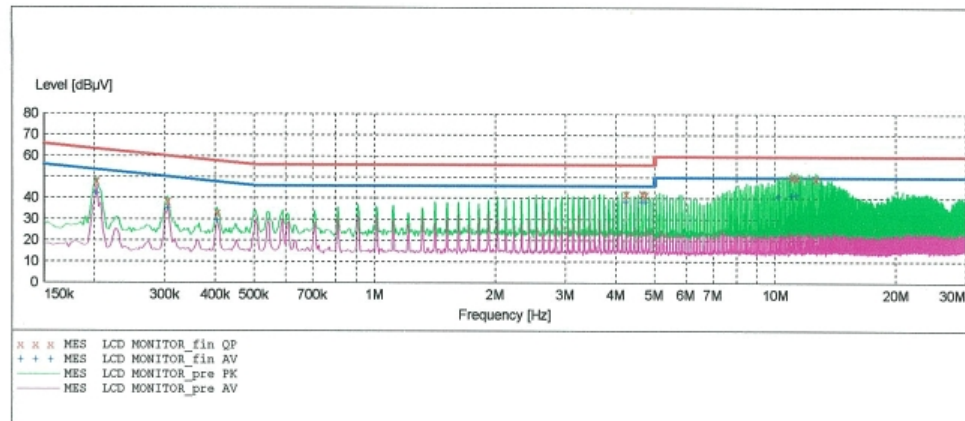
HCT

EMC TEST LAB

EUT: Q90U
Manufacturer: HYUNDAI IMAGEQUEST
Operating Condition: 1280 X 1024 75Hz
Test Site: SHIELD ROOM
Operator: GS,KIM
Test Specification: CISPR 22 CLASS B
Comment: N

SCAN TABLE: "CISPR 22 Voltage"

Short Description:			CISPR 22 Voltage			
Start Frequency	Stop Frequency	Step Width	Detector	Meas. Time	IF Bandw.	Transducer
150.1 kHz	500.0 kHz	2.5 kHz	MaxPeak Average	10.0 ms	9 kHz	None
500.0 kHz	5.0 MHz	5.0 kHz	MaxPeak Average	10.0 ms	9 kHz	None
5.0 MHz	30.0 MHz	5.0 kHz	MaxPeak Average	10.0 ms	9 kHz	None



MEASUREMENT RESULT: "LCD MONITOR_fin QP"

7/21/2005 7:37PM

Frequency MHz	Level dBμV	Transd dB	Limit dBμV	Margin dB	Line	PE
0.202600	48.30	10.1	64	15.2	---	---
0.305100	38.70	10.1	60	21.4	---	---
0.405100	33.10	10.1	58	24.6	---	---
4.250000	42.20	10.3	56	13.8	---	---
4.655000	42.40	10.3	56	13.6	---	---
4.755000	42.00	10.3	56	14.0	---	---
11.030000	50.40	10.4	60	9.6	---	---
11.335000	50.30	10.4	60	9.7	---	---
12.650000	49.60	10.4	60	10.4	---	---

MEASUREMENT RESULT: "LCD MONITOR_fin AV"

7/21/2005 7:37PM

Frequency MHz	Level dBμV	Transd dB	Limit dBμV	Margin dB	Line	PE
0.202600	42.40	10.1	54	11.1	---	---
0.305100	35.20	10.1	50	14.9	---	---
0.405100	29.60	10.1	48	18.2	---	---
4.250000	38.60	10.3	46	7.4	---	---
4.655000	38.40	10.3	46	7.6	---	---
4.755000	38.60	10.3	46	7.4	---	---
10.220000	40.90	10.4	50	9.1	---	---
11.030000	41.60	10.4	50	8.4	---	---
11.335000	41.70	10.4	50	8.3	---	---

(Analog Mode)

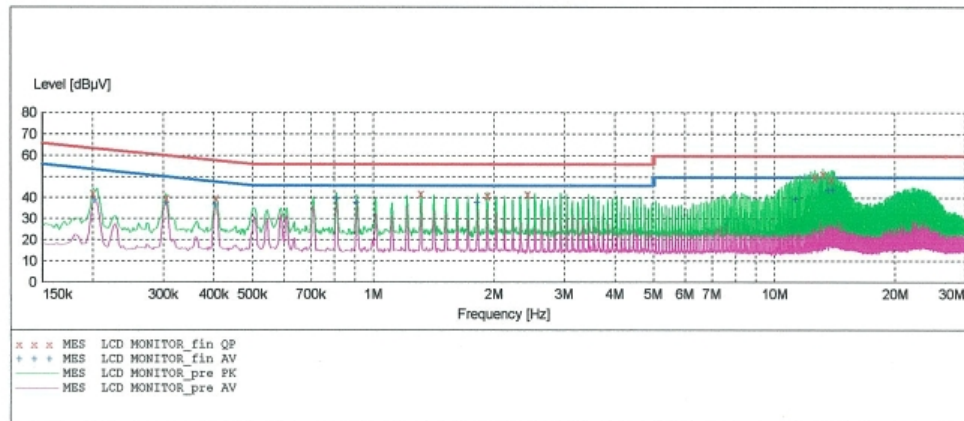
HCT

EMC TEST LAB

EUT: Q90U
Manufacturer: HYUNDAI IMAGEQUEST
Operating Condition: 1280 X 1024 60Hz
Test Site: SHIELD ROOM
Operator: GS,KIM
Test Specification: CISPR 22 CLASS B
Comment: H

SCAN TABLE: "CISPR 22 Voltage"

Short Description:			CISPR 22 Voltage			
Start Frequency	Stop Frequency	Step Width	Detector	Meas. Time	IF Bandw.	Transducer
150.1 kHz	500.0 kHz	2.5 kHz	MaxPeak Average	10.0 ms	9 kHz	None
500.0 kHz	5.0 MHz	5.0 kHz	MaxPeak Average	10.0 ms	9 kHz	None
5.0 MHz	30.0 MHz	5.0 kHz	MaxPeak Average	10.0 ms	9 kHz	None



MEASUREMENT RESULT: "LCD MONITOR_fin QP"

7/23/2005 4:22PM

Frequency MHz	Level dBμV	Transd dB	Limit dBμV	Margin dB	Line	PE
0.200100	42.50	10.1	64	21.1	---	---
0.305100	40.20	10.1	60	19.9	---	---
0.405100	40.00	10.1	58	17.8	---	---
1.315000	42.10	10.2	56	13.9	---	---
1.925000	41.20	10.3	56	14.8	---	---
2.430000	41.90	10.3	56	14.1	---	---
12.650000	50.10	10.4	60	9.9	---	---
13.260000	51.60	10.5	60	8.4	---	---
13.865000	49.20	10.5	60	10.8	---	---

MEASUREMENT RESULT: "LCD MONITOR_fin AV"

7/23/2005 4:22PM

Frequency MHz	Level dBμV	Transd dB	Limit dBμV	Margin dB	Line	PE
0.202600	39.00	10.1	54	14.5	---	---
0.305100	37.70	10.1	50	12.4	---	---
0.405100	36.80	10.1	48	10.9	---	---
0.810000	39.70	10.2	46	6.3	---	---
0.910000	38.20	10.1	46	7.8	---	---
1.820000	38.00	10.3	46	8.0	---	---
11.335000	39.60	10.4	50	10.4	---	---
13.665000	43.80	10.5	50	6.2	---	---
14.070000	43.90	10.5	50	6.1	---	---

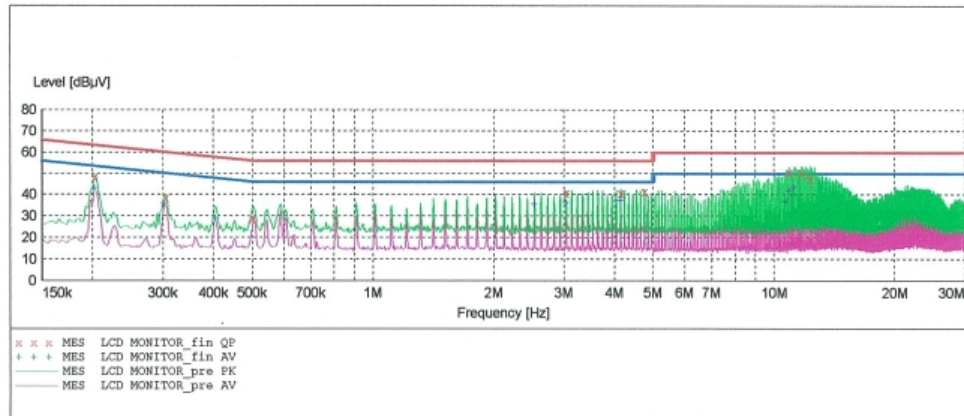
HCT

EMC TEST LAB

EUT: Q90U
Manufacturer: HYUNDAI IMAGEQUEST
Operating Condition: 1280 X 1024 60Hz
Test Site: SHIELD ROOM
Operator: GS,KIM
Test Specification: CISPR 22 CLASS B
Comment: N

SCAN TABLE: "CISPR 22 Voltage"

Short Description:			CISPR 22 Voltage			
Start Frequency	Stop Frequency	Step Width	Detector	Meas. Time	IF Bandw.	Transducer
150.1 kHz	500.0 kHz	2.5 kHz	MaxPeak Average	10.0 ms	9 kHz	None
500.0 kHz	5.0 MHz	5.0 kHz	MaxPeak Average	10.0 ms	9 kHz	None
5.0 MHz	30.0 MHz	5.0 kHz	MaxPeak Average	10.0 ms	9 kHz	None



MEASUREMENT RESULT: "LCD MONITOR_fin QP"

7/23/2005 4:18PM

Frequency MHz	Level dBμV	Transd dB	Limit dBμV	Margin dB	Line	PE
0.202600	48.30	10.1	64	15.2	---	---
0.305100	38.80	10.1	60	21.3	---	---
0.500000	28.90	10.1	56	27.1	---	---
3.035000	40.80	10.2	56	15.2	---	---
4.145000	40.80	10.3	56	15.2	---	---
4.755000	41.40	10.3	56	14.6	---	---
10.925000	50.60	10.4	60	9.4	---	---
11.735000	50.40	10.4	60	9.6	---	---
12.340000	47.60	10.4	60	12.4	---	---

MEASUREMENT RESULT: "LCD MONITOR_fin AV"

7/23/2005 4:18PM

Frequency MHz	Level dBμV	Transd dB	Limit dBμV	Margin dB	Line	PE
0.202600	43.00	10.1	54	10.5	---	---
0.302600	36.00	10.1	50	14.2	---	---
0.405100	29.20	10.1	48	18.5	---	---
2.530000	35.60	10.3	46	10.4	---	---
3.035000	36.50	10.2	46	9.5	---	---
4.145000	37.20	10.3	46	8.8	---	---
10.720000	37.10	10.4	50	12.9	---	---
10.925000	41.90	10.4	50	8.1	---	---
11.230000	43.50	10.4	50	6.5	---	---

(Digital Mode)

NOTES:

- 1. All modes of operation were investigated and the worst-case emissions are reported.**
- 2. The CISPR RFI conducted limits are listed on Table 1 (Page 7).**
- 3. Line H = Phase Line N = Neutral Line**

** Measurements using CISPR quasi-peak mode.

7.1 RADIATED TEST DATA

- Analog mode(D-Sub)

Frequency MHz	Reading dBuV	Ant. Factor dB/m	Cable Loss dB	ANT POL (H/V)	Total dBuV/m	Limit dBuV/m	Margin dB
38.2	10.5	11.5	1.3	V	23.3	30.0	6.7
49.8	7.9	12.4	1.5	V	21.8	30.0	8.2
63.3	6.8	10.7	1.8	V	19.3	30.0	10.7
87.1	9.3	7.7	2.1	V	19.1	30.0	10.9
103.4	11.6	9.5	2.3	V	23.4	30.0	6.6
187.6	7.0	10.6	3.1	V	20.7	30.0	9.3
232.8	8.4	10.7	3.5	H	22.6	37.0	14.4
288.3	14.3	12.6	3.9	H	30.8	37.0	6.2
312.1	6.2	13.2	4.1	V	23.5	37.0	13.5
331.8	4.4	13.6	4.2	V	22.2	37.0	14.8
586.2	3.6	19.0	5.5	H	28.1	37.0	8.9
598.3	4.4	19.3	5.6	H	29.3	37.0	7.7

Radiated Measurements at 10-meters.

1280 X 1024 (@75Hz)

- Digital mode(DVI)

Frequency MHz	Reading dBuV	Ant. Factor dB/m	Cable Loss dB	ANT POL (H/V)	Total dBuV/m	Limit dBuV/m	Margin dB
38.2	9.5	11.5	1.3	V	22.3	30.0	7.7
67.8	10.3	10.0	1.8	V	22.1	30.0	7.9
142.7	5.3	12.8	2.6	H	20.7	30.0	9.3
185.1	5.7	10.8	3.1	V	19.6	30.0	10.4
193.6	5.1	10.1	3.1	V	18.3	30.0	11.7
217.7	5.3	10.2	3.3	H	18.8	30.0	11.2
245.1	6.6	11.1	3.6	V	21.3	37.0	15.7
302.8	13.0	13.1	4.0	V	30.1	37.0	6.9
331.4	10.6	13.6	4.2	H	28.4	37.0	8.6
507.3	4.9	17.1	5.1	H	27.1	37.0	9.9
536.2	5.7	17.9	5.3	V	28.9	37.0	8.1
675.1	4.6	20.7	6.0	V	31.3	37.0	5.7

Radiated Measurements at 10-meters.

1280 X 1024 (@60Hz)

NOTES:

1. All modes of operation were investigated, and the worst-case emissions are reported.
2. The radiated limits are listed on Table 2 (Page 8).

** AFCL = Antenna Factor (Roberts dipole) and Cable Loss .

*** Measurements using CISPR quasi-peak mode. Above 1GHz, peak detector function mode is used using a resolution bandwidth of 1MHz and a video bandwidth of 1MHz. The peak level complies with the average limit. Peak mode is used with linearly polarized horn antenna and low-loss microwave cable.

8.1 Sample Calculations

$$\text{dB } \mu\text{V} = 20 \log_{10} (\text{mV/m})$$

8.2 Example 1:

@ 250.0 KHz

Class B limit	= 60.0 dB μV
Reading	= 50.4 dB μV (calibrated level)

Margin	= 50.4 – 60.0 = - 9.6 dB μV
	= 9.6 dB below limit

8.3 Example 2:

@ 638.1 MHz

Class B limit	= 37 dB $\mu\text{V/m}$
Reading	= 4.6 dB $\mu\text{V/m}$ (calibrated level)
Antenna Factor + Cable Loss	= 26.7 dB
Total	= 31.3 dB $\mu\text{V/m}$

Margin	= 31.3 - 37.0 = - 5.7
	= 5.7 dB below limit

9.1 Test Equipment

<u>Type</u>	<u>Manufacture</u>	<u>Model Number</u>	<u>CAL Due Date</u>
EMI Test Receiver	Rohde & Schwarz	ESCI40	2005.11.16
EMI Test Receiver	Rohde & Schwarz	ESVS30	2006.07.01
EMI Test Receiver	Rohde & Schwarz	ESCI	2005.09.13
LISN	Rohde & Schwarz	ESH2-Z5	2006.04.26
Attenuator	Rohde & Schwarz	ESH3-Z2	2005.11.16
TRILOG Antenna	Schwarzbeck	9160	2006.03.31
Antenna Position Tower	HD	MA240	N/A
Turn Table	EMCO	1050	N/A
Power Analyzer	Voltech	PM 3300	2006.03.22
Reference Network Impedance	Voltech	IEC 555	N/A
AC Power Source	PACIFIC	Magnetic Module	N/A
AC Power Source	PACIFIC	360-AMX	2005.11.25
Controller	HD GmbH	HD 100	N/A
SlideBar	HD GmbH	KMS 560	N/A
PULSE LIMITER	Rohde & Schwarz	ESH3-Z2	2005.11.16

10.1 Test Software Used

The EUT exercise program used during radiated and conducted testing was designed to exercise the various system components in a manner similar to a typical use. The software, contained on a 3-1/2 inch disc, was inserted into drive A and is auto starting on power-up. Once loaded, the program sequentially exercises each system component in turn. The sequence used is : (1) Display test, (2) RS 232 test (3) Key board test, (4) Printer test, (5) FDD test, (6) HDD test. The complete cycle takes about 20 seconds and is repeated continuously. As the keyboard and mouse are strictly input devices, no data is transmitted to them during test. They are however, continuously scanned for data input activity. The video resolution modes setup and change program was used during the radiated and conducted emission testing.

NOTE: This is a sample of the basic program used during the test. However, during testing, a different software program may be used; whichever determines the worst-case condition. In addition, the program used also depends on the number and type of devices being tested.

Actual program used is the "H" pattern in Notepad under Windows environment. All resolution modes (1280×1024 , 1152×870 , 1024×768 , 832×624 , 800×600 , 640×480 , 720×400) were investigated and tested

11.1 Conclusion

The data collected shows that the HYUNDAI IMAGEQUEST CO., LTD. 19-inch LCD Monitor
FCC ID: PJIL19C0D072

complies with §15.107 and §15.109 of the FCC Rules.