

## HYUNDAI CALIBRATION & CERTIFICATION TECH. CO., LTD.

Product Compliance Division, EMC Team  
SAN 136-1, AMI-RI, BUBAL-EUP, ICHEON-SI, KYOUNKI-DO, 467-701, KOREA  
TEL : +82 31 639 8518 FAX : +82 31 639 8525

# CERTIFICATION

**Manufacture;**  
**HYUNDAI IMAGEQUEST CO., LTD.**

**SAN 136-1, AMI-RI, BUBAL-EUP, ICHEON-SI,  
KYOUNKI-DO, 467-701, KOREA**

**HYUNDAI IMAGEQUEST FRN : 0005-8664-39**

**Date of Issue : September 12, 2005**

**Test Report No.: HCT-F05-0907**

**Test Site: HYUNDAI CALIBRATION & CERTIFICATION  
TECHNOLOGIES CO., LTD.**

**HCT FRN : 0005-8664-21**

**FCC ID :**

**PJIL17A00000**

**MODEL /TYPE:**

**B70A/L17A00000**

<b>Rule Part(s):</b>	<b>Part 15 &amp; 2</b>
<b>Equipment Class:</b>	<b>FCC Class B Peripheral Device (JBP)</b>
<b>Standard(s):</b>	<b>FCC Class B: (CISPR 22)</b>
<b>EUT Type:</b>	<b>17" LCD MONITOR</b>
<b>Max. Resolution(s):</b>	<b>1280 X 1024 (@/75Hz)</b>
<b>Model(s):</b>	<b>B70A</b>
<b>Port/Connector(s)</b>	<b>15-pin D-sub VGA connector</b>
<b>LCD Panel</b>	<b>BOE HYDIS(HT170E01-101)</b>

This equipment has been shown to be in compliance with the applicable technical standards as indicated in the measurement report and was tested in accordance with the measurement procedures specified in ANSI C63.4-2003

I attest to the accuracy of data. All measurements reported herein were performed by me or were made under my supervision and are correct to the best of my knowledge and belief. I assume full responsibility for the completeness of these measurements and vouch for the qualifications of all persons taking them.



Report prepared by : Ki-Soo Kim  
Manager of EMC Tech. Part



# TABLE OF CONTENTS

## PAGE

<b>REPORT COVER</b>	<b>1</b>
<b>TABLE OF CONTENTS</b>	<b>2</b>
<b>1.1 SCOPE</b>	<b>3</b>
<b>2.1 INTRODUCTION (SITE DESCRIPTION)</b>	<b>4</b>
<b>3.1 PRODUCTION INFORMATION</b>	<b>5-6</b>
<b>4.1 DESCRIPTION OF TESTS (CONDUCTED)</b>	<b>7</b>
<b>4.3 DESCRIPTION OF TESTS (RADIATED)</b>	<b>8</b>
<b>5.1 LIST OF SUPPORT EQUIPMENT</b>	<b>9-10</b>
<b>6.1 TEST DATA (CONDUCTED)</b>	<b>11-15</b>
<b>7.1 TEST DATA (RADIATED)</b>	<b>16</b>
<b>8.1 SAMPLE CALCULATIONS</b>	<b>17</b>
<b>9.1 TEST EQUIPMENT</b>	<b>18</b>
<b>10.1 TEST SOFTWARE USED</b>	<b>19</b>
<b>11.1 CONCLUSION</b>	<b>20</b>

<b>ATTACHMENT A :</b>	<b>EXTERNAL PHOTOGRAPHS</b>
<b>ATTACHMENT B :</b>	<b>TEST SETUP PHOTOGRAPHS</b>
<b>ATTACHMENT C :</b>	<b>INTERNAL PHOTOGRAPHS</b>

# MEASUREMENT REPORT

## 1.1 Scope

Measurement and determination of electromagnetic emissions (EME) of radio frequency devices including intentional and/or unintentional radiators for compliance with the technical rules and regulations of the Federal Communications Commission.

<b>Applicant Name:</b>	<b>HYUNDAI IMAGEQUEST</b>
<b>Address:</b>	<b>SAN 136-1, AMI-RI , BUBAL-EUP, ICHEON-SI, KYOUNKI-DO, 467-701,KOREA</b>

- **FCC ID : PJIL17A00000**
- Equipment Class: FCC Class B Peripheral Device (JBP)
- EUT Type: 17" LCD MONITOR
- Model(s): B70A
- Max. Resolution: 1280 X 1024 (@75Hz)
- Power Cord: Unshielded
- Rule Part(s): FCC Part 15 Subpart B
- Test Procedure(s): ANSI C63.4 (2003)
- Dates of Tests: October 13, 2005 ~October 17, 2005
- Place of Tests: 254-1,MAEKOK-RI,HOBUP-MYUN,ICHON-SI,KYOUNGKI-DO,467-701,KOREA

## 2.1 INTRODUCTION

The measurement procedure described in American National Standard for Methods of Measurement of Radio-Noise Emissions from Low-Voltage Electrical and Electronic Equipment in the Range of 9kHz to 40GHz (ANSI C63.4-2001) was used in determining radiated and conducted emissions emanating from **HYUNDAI IMAGEQUEST CO.,LTD. 17-inch LCD Monitor FCC ID: PJIL17A00000**

The open area test site and conducted measurement facility used to collect the radiated data are located at the 254-1, MAEKOK-RI, HOBUP-MYUN, ICHON-SI, KYOUNGKI-DO, 467-701, KOREA. The site is constructed in conformance with the requirements of ANSI C63.4 and CISPR Publication 22. Detailed description of test facility was submitted to the Commission and accepted dated July 23, 2003 (Confirmation Number: EA90661)

## 3.1 PRODUCT INFORMATION

### 3.2 Equipment Description

Equipment Under Test (EUT) is the **HYUNDAI IMAGEQUEST CO.,Ltd. ( Model : B70A ) 17-inch LCD Monitor**

FCC ID: **PJIL17A00000**

Maximum Resolution(s): 1280 X 1024 (@75Hz)

Dimensions: **374mm(W) x 401mm(H) x 200mm(D)**

Power Supply: **DC 12V -----3.3A**

Port(s)/Input Connector(s): 15-pin D-sub VGA connector

Cable(s): Shielded D-Sub (with ferrite on both ends)

Dimensions (WxHxD): 396x414x200mm (WxHxD)

Weight (Net):3.7Kg unpacked

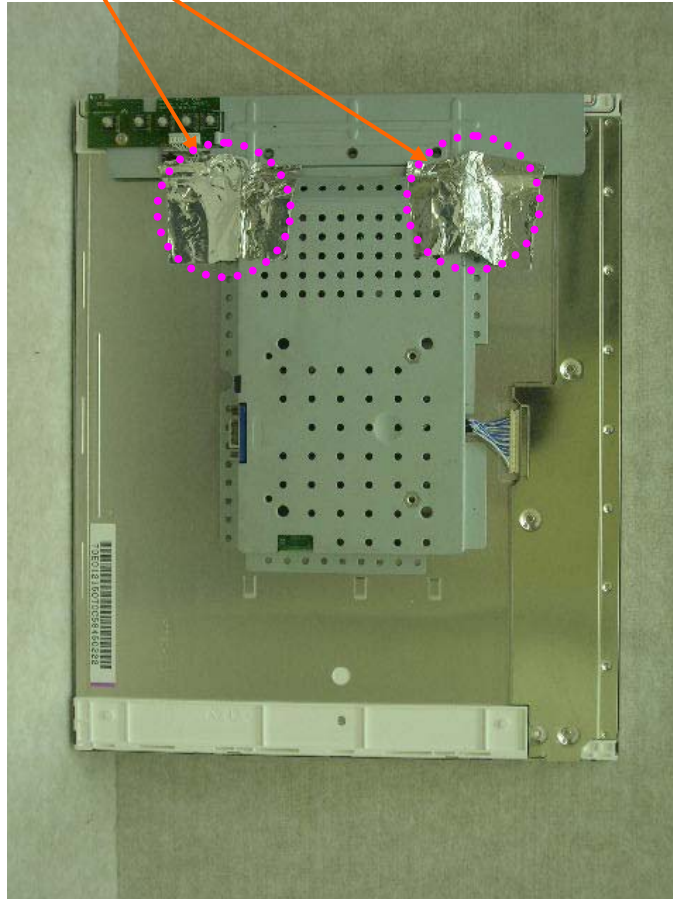
Power Consumption : **35Watts**

Weight (Net): **3.2Kg**

### EMI Suppression Devices:

Modifications were made to the device. Please refer to the next page.

1. 1. Attach aluminum tape on the frame



## 4.1 Description of Tests(Conducted)

### 4.2 Powerline Conducted RFI (150kHz- 30MHz)

The power line conducted RFI measurements were performed according to CISPR 22.

The EUT was placed on a non-conducting 1.0 by 1.5 meter table which is 0.8 meters in height and 0.40 meters away from the vertical wall of the shielded enclosure. Power to the EUT is provided through a Rohde & Schwarz 50  $\Omega$  / 50  $\mu$ H Line Impedance Stabilization Network (LISN) and the support equipment through a separate Solar 50  $\Omega$  / 50  $\mu$ H Line- Conducted Test Facility LISN. Sufficient time for the EUT, support equipment, and test equipment were allowed in order for them to warm up to their normal operating condition. The RF output of the LISN was connected to the spectrum analyzer to determine the frequency producing the maximum EME. The spectrum was scanned from 150kHz to 30 MHz. Each maximum EME was remeasured using an EMI receiver. The detector function of the receiver was set to CISPR quasi- peak and average mode with the bandwidth set to 9 kHz. Each emission was maximized consistent with the typical applications by varying the configuration of the test sample. Interface cables were connected to the available interface ports of the test unit. The effect of varying the position of cables was investigated to find the configuration that produces maximum Diagram emission. Excess cable lengths were bundled at the center with 30- 40cm. in length. The worst-case configuration is noted in the test report and the photographs are attached. Each EME reported was calibrated using the Rohde & Schwarz SMX signal generator and are listed on Table 1. RFI Conducted FCC Class B

RFI CONDUCTED	CISPR 22 CLASS B	
	Limits dB(uV/m)	
Freq. Range	CISPR 22 Quasi-Peak	CISPR 22 Average
150kHz - 0.5MHz	66-56**	56-46**
0.5MHz - 5MHz	56	46
5MHz - 30MHz	60	50
**Limits decreases linearly with the logarithm of frequency		

Table 1. RFI Conducted Limits

## 4.3 Description of Tests(Radiated)

### Radiated Emissions

Preliminary measurements were made indoors at 1 meter using broadband antennas, broadband amplifier, and spectrum analyzer to determine the frequency producing the maximum EME. Appropriate precaution was taken to ensure that all EME from the EUT were maximized and investigated. The spectrum was scanned from 30 to 300 MHz using biconical antenna, 300 to 1000 MHz using log- periodic antenna, and above 1 GHz using linearly polarized horn antennas. Final measurements were made outdoors at 10-meter test range using Dipole antennas and EMI receiver. For frequencies above 1 GHz, horn antennas were used. Sufficient time for the EUT, support equipment, and test equipment were allowed in order for them to warm up to their normal operating condition. The EMI receiver detector function was set to CISPR quasi-peak mode and the bandwidth of the receiver was set to 120 kHz. The EUT, support equipment, and interconnecting cables were arranged to the configuration that produces the maximum EME emission found during preliminary scan. The turntable containing the system was rotated; the antenna height was varied 1 to 4 meters and stopped at the azimuth or height producing the maximum emission. Horizontal and vertical antenna polarizations were checked. Each emission was maximized by: varying the mode of operation or resolution; clock or data exchange speed; scrolling H pattern to the EUT and/ or support equipment, and powering the monitor the computer aux AC outlet, if applicable; and changing the polarity of the antenna, whichever determined the worst-case emission.

ITE Radiated Limits			
Frequency (MHz)	FCC Limit @ 3m. Quasi- Peak dB[μV/m]	FCC Limit @ 10m.* Quasi – Peak dB [μV/m]	CISPR Limit @ 10m. Quasi-Peak dB [μV/m]
30-88	40.0	29.5	30.0
88-216	43.5	33.0	30.0
216-230	46.0	35.6	30.0
230-960	46.0	35.6	37.0
960-1000	54.0	43.5	37.0
> 1000	54.0	43.5	No Specified Limit
* Limit extrapolated 20 dB/decade			

Table 2. Radiated Class B limits @ 10-meters



## 5.1 Support Equipment Used

DEVICE TYPE	MANUFACTURER	MODEL NUMBER	FCC ID / DoC	CONNECTED TO
MONITOR (EUT)	HYUNDAI IMAGEQUEST CO., LTD.	B70A	PJIL17A00000	P.C
P.C	H/P	HP Pavilion 8921	DoC	EUT
Mouse	DELL	MO56UO	DoC	P.C
Serial Mouse	Logitech	M-M28	DoC	P.C
Key Board	H/P	5181	DoC	P.C
Printer	H/P	C4569A	DoC	P.C

## 5.2 Cable Description

		Power Cord Shielded (Y/N)	I/O Cable Shielded (Y/N)	Length (M)
LCD Monitor (EUT)	Power	N	N/A	1.8(P)
	D Sub	N/A	Y	1.8(D)
PC		N	N/A	1.8(P)
Key Board		N/A	Y	1.8(D)
Mouse		N/A	Y	1.8(D)
Serial Mouse		N/A	Y	1.8(D)
Printer		N	Y	1.8(P,D)

The marked "(D)" means the Data Cable and "(P)" means the Power Cable.

## 5.3 Noise Suppression Parts on Cable. (I/O CABLE)

		Ferrite Bead (Y/N)	Location	Metal Hood (Y/N)	Location
LCD Monitor (EUT)	D Sub	Y	BOTH END	Y	BOTH END
PC		N/A	N/A	N/A	N/A
Key Board		N	N/A	Y	PC END
Mouse		N	N/A	Y	PC END
Serial Mouse		N	N/A	Y	PC END
Printer		N	N/A	Y	BOTH END

## 6.1 LINE-CONDUCTED TEST DATA

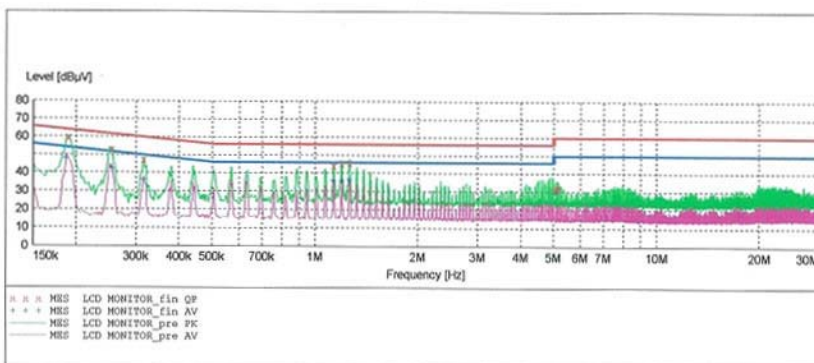
HCT

### EMC TEST LAB

EUT: B70A  
Manufacturer: HYUNDAI IMAGEQUEST  
Operating Condition: 1280 X 1024 75Hz  
Test Site: SHIELD ROOM  
Operator: GS, KIM  
Test Specification: CISPR 22 CLASS B  
Comment: H

### SCAN TABLE: "CISPR 22 Voltage"

Short Description:		CISPR 22 Voltage				
Start	Stop	Step	Detector	Meas. Time	IF Bandw.	Transducer
Frequency	Frequency	Width				
150.1 kHz	500.0 kHz	2.5 kHz	MaxPeak	10.0 ms	9 kHz	None
			Average			
500.0 kHz	5.0 MHz	5.0 kHz	MaxPeak	10.0 ms	9 kHz	None
			Average			
5.0 MHz	30.0 MHz	5.0 kHz	MaxPeak	10.0 ms	9 kHz	None
			Average			



### MEASUREMENT RESULT: "LCD MONITOR\_fin QP"

10/17/2005 4:57PM

Frequency MHz	Level dBμV	Transd dB	Limit dBμV	Margin dB	Line	PE
0.190100	59.70	10.1	64	4.4	---	---
0.255100	52.70	10.1	62	8.9	---	---
0.315100	47.40	10.1	60	12.4	---	---
1.135000	44.10	10.1	56	11.9	---	---
1.200000	45.50	10.1	56	10.5	---	---
1.260000	45.70	10.2	56	10.3	---	---
5.050000	31.60	10.3	60	28.4	---	---
5.110000	32.60	10.3	60	27.4	---	---
5.175000	31.80	10.3	60	28.2	---	---

**MEASUREMENT RESULT: "LCD MONITOR\_fin AV"**

10/17/2005 4:57PM

Frequency MHz	Level dBμV	Transd dB	Limit dBμV	Margin dB	Line	PE
0.187600	48.20	10.1	54	5.9	---	---
0.255100	42.50	10.1	52	9.1	---	---
0.315100	36.50	10.1	50	13.3	---	---
1.135000	35.90	10.1	46	10.1	---	---
1.200000	35.80	10.1	46	10.2	---	---
1.260000	36.50	10.2	46	9.5	---	---
5.045000	29.80	10.3	50	20.2	---	---
5.110000	29.70	10.3	50	20.3	---	---
24.025000	31.70	10.6	50	18.3	---	---

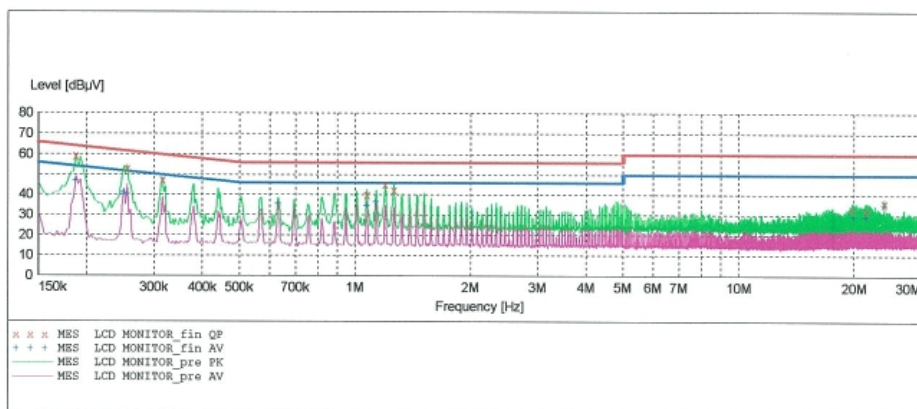
**HCT**

**EMC TEST LAB**

EUT: B70A  
Manufacturer: HYUNDAI IMAGEQUEST  
Operating Condition: 1280 X 1024 75Hz  
Test Site: SHIELD ROOM  
Operator: GS,KIM  
Test Specification: CISPR 22 CLASS B  
Comment: N

**SCAN TABLE: "CISPR 22 Voltage"**

Short Description:			CISPR 22 Voltage				
Start	Stop	Step	Detector	Meas. Time	IF Bandw.	Transducer	
Frequency	Frequency	Width					
150.1 kHz	500.0 kHz	2.5 kHz	MaxPeak	10.0 ms	9 kHz	None	
			Average				
500.0 kHz	5.0 MHz	5.0 kHz	MaxPeak	10.0 ms	9 kHz	None	
			Average				
5.0 MHz	30.0 MHz	5.0 kHz	MaxPeak	10.0 ms	9 kHz	None	
			Average				



**MEASUREMENT RESULT: "LCD MONITOR\_fin QP"**

10/17/2005 4:48PM							
Frequency MHz	Level dBμV	Transd dB	Limit dBμV	Margin dB	Line	PE	
0.187600	59.20	10.1	64	5.0	---	---	
0.255100	52.90	10.1	62	8.7	---	---	
0.315100	47.40	10.1	60	12.4	---	---	
1.075000	40.00	10.1	56	16.0	---	---	
1.200000	45.10	10.1	56	10.9	---	---	
1.265000	42.50	10.2	56	13.5	---	---	
19.810000	33.40	10.5	60	26.6	---	---	
21.580000	32.60	10.6	60	27.4	---	---	
24.025000	36.00	10.6	60	24.0	---	---	

**MEASUREMENT RESULT: "LCD MONITOR\_fin AV"**

10/17/2005 4:48PM

Frequency MHz	Level dBμV	Transd dB	Limit dBμV	Margin dB	Line	PE
0.187600	47.00	10.1	54	7.2	---	---
0.250100	40.90	10.1	52	10.8	---	---
0.255100	40.40	10.1	52	11.2	---	---
0.630000	35.80	10.2	46	10.2	---	---
1.075000	34.90	10.1	46	11.1	---	---
1.135000	36.60	10.1	46	9.4	---	---
19.940000	29.40	10.5	50	20.6	---	---
21.515000	29.30	10.6	50	20.7	---	---
24.025000	35.40	10.6	50	14.6	---	---

**NOTES:**

1. All modes of operation were investigated and the worst-case emissions are reported.
2. The CISPR RFI conducted limits are listed on Table 1 (Page 7).
3. Line H = Phase Line N = Neutral Line

---

\*\* Measurements using CISPR quasi-peak mode.

## 7.1 RADIATED TEST DATA

Frequency MHz	Reading dBuV	Ant. Factor dB/m	Cable Loss Db	ANT POL (H/V)	Total dBuV/m	Limit dBuV/m	Margin dB
63.2	6.5	10.7	1.8	V	19.0	30.0	11.0
87.8	9.4	7.7	2.1	V	19.2	30.0	10.8
96.8	10.2	8.6	2.2	H	21.0	30.0	9.0
128.3	3.5	12.0	2.6	V	18.1	30.0	11.9
183.8	6.5	10.9	3.0	V	20.4	30.0	9.6
201.4	9.0	9.6	3.2	V	21.8	30.0	8.2
264.8	12.9	11.8	3.7	H	28.4	37.0	8.6
327.3	9.6	13.5	4.2	V	27.3	37.0	9.7
336.9	13.4	13.7	4.2	H	31.3	37.0	5.7
342.1	12.0	13.8	4.3	V	30.1	37.0	6.9
361.2	10.2	14.2	4.4	H	28.8	37.0	8.2
398.9	11.4	15.0	4.6	V	31.0	37.0	6.0

Radiated Measurements at 10-meters.

**1280 X 1024 (@75Hz)**

### NOTES:

1. All modes of operation were investigated, and the worst-case emissions are reported.
2. The radiated limits are listed on Table 2 (Page 8).

\*\* AFCL = Antenna Factor (Roberts dipole) and Cable Loss .

\*\*\* Measurements using CISPR quasi-peak mode. Above 1GHz, peak detector function mode is used using a resolution bandwidth of 1MHz and a video bandwidth of 1MHz. The peak level complies with the average limit. Peak mode is used with linearly polarized horn antenna and low-loss microwave cable.



## 8.1 Sample Calculations

$$\text{dB } \mu\text{V} = 20 \log_{10} (\text{mV/m})$$

### 8.2 Example 1:

**@ 190.01 KHz**

Class B limit	= 64.1 dB $\mu\text{V}$
Reading	= 59.7 dB $\mu\text{V}$ (calibrated level)

Margin	= 59.7 – 64.1 = - 4.4 dB $\mu\text{V}$
	= <b>4.4 dB below limit</b>

### 8.3 Example 2:

**@ 336.9MHz**

Class B limit	= 37 dB $\mu\text{V}/\text{m}$
Reading	= 13.4 dB $\mu\text{V}/\text{m}$ (calibrated level)
Antenna Factor + Cable Loss	= 17.9 dB
Total	= 31.3 dB $\mu\text{V}/\text{m}$

Margin	= 31.3 - 37.0 = - 5.7
	= <b>5.7 dB below limit</b>

## 9.1 Test Equipment

<u>Type</u>	<u>Manufacture</u>	<u>Model Number</u>	<u>CAL Due Date</u>
EMI Test Receiver	Rohde & Schwarz	ESCI40	2005.11.16
EMI Test Receiver	Rohde & Schwarz	ESVS30	2006.07.01
EMI Test Receiver	Rohde & Schwarz	ESCI	2006.09.13
LISN	Rohde & Schwarz	ESH2-Z5	2006.04.26
Attenuator	Rohde & Schwarz	ESH3-Z2	2005.11.16
TRILOG Antenna	Schwarzbeck	9160	2006.03.31
Antenna Position Tower	HD	MA240	N/A
Turn Table	EMCO	1050	N/A
Power Analyzer	Voltech	PM 3300	2006.03.22
Reference Network Impedance	Voltech	IEC 555	N/A
AC Power Source	PACIFIC	Magnetic Module	N/A
AC Power Source	PACIFIC	360-AMX	2005.11.25
Controller	HD GmbH	HD 100	N/A
SlideBar	HD GmbH	KMS 560	N/A
PULSE LIMITER	Rohde & Schwarz	ESH3-Z2	2005.11.16

## 10.1 Test Software Used

The EUT exercise program used during radiated and conducted testing was designed to exercise the various system components in a manner similar to a typical use. The software, contained on a 3-1/2 inch disc, was inserted into drive A and is auto starting on power-up. Once loaded, the program sequentially exercises each system component in turn. The sequence used is : (1) Display test, (2) RS 232 test (3) Key board test, (4) Printer test, (5) FDD test, (6) HDD test. The complete cycle takes about 20 seconds and is repeated continuously. As the keyboard and mouse are strictly input devices, no data is transmitted to them during test. They are however, continuously scanned for data input activity. The video resolution modes setup and change program was used during the radiated and conducted emission testing.

NOTE: This is a sample of the basic program used during the test. However, during testing, a different software program may be used; whichever determines the worst-case condition. In addition, the program used also depends on the number and type of devices being tested.

Actual program used is the "H" pattern in Notepad under Windows environment. All resolution modes ( 1280x1024, 1024x768, 800x600, 640x480, 720x400) were investigated and tested

## 11.1 Conclusion

The data collected shows that the HYUNDAI IMAGEQUEST CO., LTD. 17-inch LCD Monitor  
FCC ID: PJIL17A00000 complies with §15.107 and §15.109 of the FCC Rules.