

APRIL 22, 2005
Federal Communications Commission
Equipment Approval Services
7435 Oakland Mills Road
Columbia, MD 21046

SUBJECT : Hyundai ImageQuest Co., Ltd.
FCC ID: PJIL17A00000
Class ☐ Permissive Change
Orig. Grant Date : March 29, 2005

Gentlemen:

Transmitted herewith, on behalf of Hyundai ImageQuest Co., Ltd. is an application for a Class II Permissive Change Certification of the following 17-inch LCD Monitor:

FCC ID : PJIL17A00000
Model/TYPE : B70A/L17A00000

The device is identical to the previously certified monitor except for the following:

1. LCD Panel
 - 1) Original LCD Panel,
Manufacture : SAMSUNG Electronics Model NO : LTM170EU-L21
 - 2) Alternate LCD Panel
Manufacture : LG PHILIPS LCD Model NO : LM170E01
2. AC/DC ADAPTOR
 - 1) Original AC/DC ADAPTOR
Manufacture : SITECH LTD Model NO : SAD04212-UV
 - 2) Alternate AC/DC ADAPTOR
Manufacture : FSP GROUP INC. Model NO : FSP040-1ADF03A
3. Main Board
Remove the Audio function and change layout in the main board

KI SOO KIM

KI SOO KIM
EMC MANAGER

cc: Mr. HEE JUNG KIM ----- R & D / ASSISTANT MANAGER

• Solution for EMI

We, Hyundai ImageQuest CO.,LTD. , announce that all modifications will be incorporated into each unit sold in the U.S.

1. Attach aluminum tape on the frame
2. Attach a gasket on the main frame to contact the lcd panel

(Please refer to next page of the photographs for Solution for EMI)

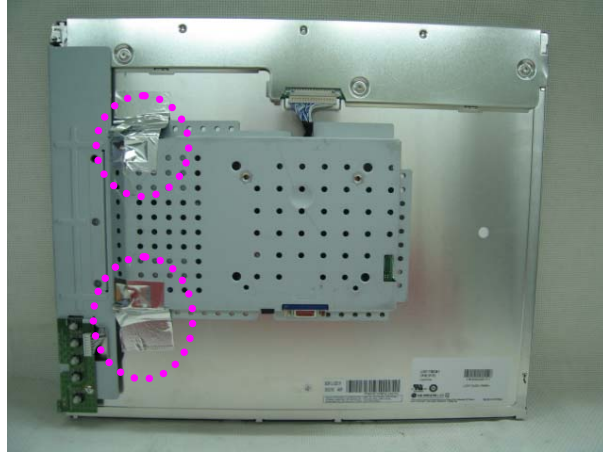
Hyundai ImageQuest CO.,LTD.

2005. 04. 22

**R & D CENTER / MANAGER
HEE JUNG KIM**



1. Attach aluminum tape on the frame



2. Attach a gasket on the main frame to contact the lcd panel

