

March 16, 2004
Federal Communications Commission
Equipment Approval Services
7435 Oakland Mills Road
Columbia, MD 21046

SUBJECT : ImageQuest Co., Ltd.
FCC ID: PJIET1925L
FCC Part 15 Subpart B Certification
(Class II Permissive Change)

Gentlemen:

Transmitted herewith, on behalf of ImageQuest Co., Ltd. is an application for a FCC Part 15 Subpart B Certification of the following 19-inch LCD Kiosk Touch Screen Monitor (Serial Interface Type) :

FCC ID : PJIET1925L
Model No. : ET1925L-7SWA-1

The device is identical to the previously certified monitor except for the following:

1. Alternate product model name
Old : ET1925L-0NWA-N-TR New : ET1925L-7SWA-1
2. Add touch glass (Accutouch type)
3. Add control board
CCTC-2103 (ELO Touch systems. INC)

Attached is the applicant's Cover Letter, External/Internal Photos, Test Set-Up Photos, FCC ID & Label Location, User Manual, Block Diagram and Test Report.

Should you have any questions or comments concerning the above, please contact the undersigned.



KI SOO KIM
EMC MANAGER

cc: Mr. HEE JUNG KIM ----- R & D CENTER / MANAGER

• Solution for EMI

We, ImageQuest CO., LTD. , announce that all modifications will be incorporated into each unit sold in the U.S.

1. Apply a ferrite core to the OSD signal interface cable
2. Attach a gasket on the main board
3. Attach a gasket on the LCD panel

(Please refer to next page of the photographs for Solution for EMI)

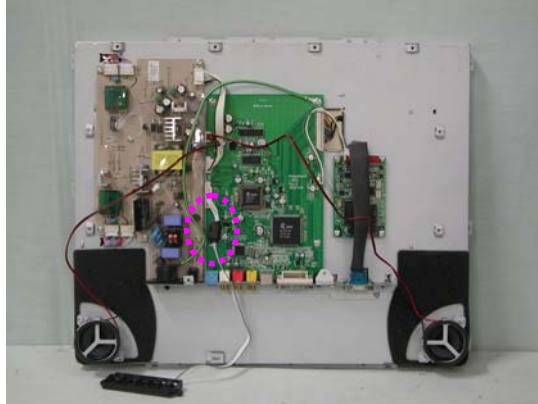
ImageQuest CO., LTD.

2004. 3. 16

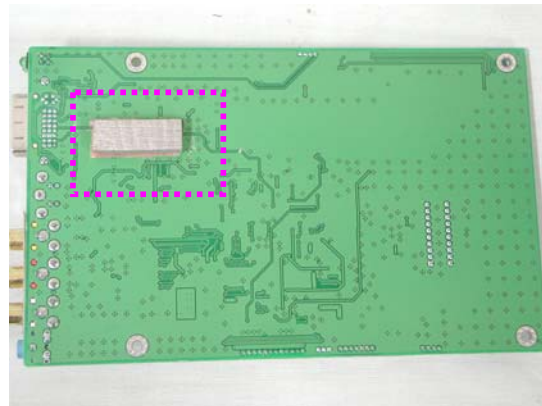
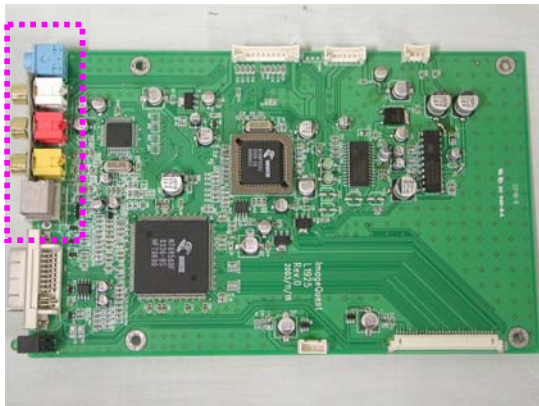
**R & D CENTER / MANAGER
HEE JUNG KIM**



1. Apply a ferrite core to the OSD signal interface cable



2. Attach a gasket on the main board



3. Attach a gasket on the LCD panel

