

1. Installation Guide

1.1. Material List

PACS RADIO PORT Material List		
Component Number	Specification	Quantity
1	RADIO PORT	1
2	MOUNTING PLATE	1
3	ANTENNA BRACKET	2
4	BRACKET ANGLE	4
5	MOUNTING BELT	2
6	MECHINIC SCREW M6*20	8
7	MECHINIC SCREW M6*40	4
8	WASHER	24
9	NUT SCREW	12
10	SPRING WASHER	12
11	ANTENNA ASS'Y	2
12	ANCHOR BOLT	2
13	ANTENNA CABLE	2
14	ABS COVER	2

1.2. Installation on utility pole or cylindrical pole

1.2.1. Installation requirements

The diameter of the utility pole or cylindrical pole should be between 20cm and 35 cm. The material of the pole can be wood, cement or metal.

1.2.2. Installation procedure

Step 1.:

According to figure 5-1, assemble components (3) and (4) for two sets (left and right) by M6*40 screws with grommet or spring grommet between the screw and screw nut using components (7), (8), (9), and (10).

Step2:

Assemble the two combined entities (left and right) from Step1 with component (2) by M6*20 screws with grommet or spring grommet between the screw and screw nut using components (6), (8), (9), and (10). Then press component (14) into component (3).

Step3:

Fix the rack from Step1 and Step2 on the pole by two stainless bands, component (5), respectively on the top and the bottom following the instruction in Figure 5-3.

Step4:

Screw two antenna sets (component (11) and component (13)) onto the two sides of component (3) tightly with antenna facing the outer side.

Step 5:

Fix the radio port (component (1)) on the rack by M6*20 screws with grommet or spring grommet between the screw and screw nut using components (6), (8), (9), and (10), and the installation is complete.

Step 6:

According to figure 5-4, connect ANT0, ANT1, LINE cable, and the EARTH cable to the RP.

1.3. Installation on the wall



1.3.1. Installation requirements

It would be better that the wall is 8-inch thick. Because the adopted fixed crew is only for cement wall use, the other materials such as wooden wall and metal wall are not applicable

1.3.2. Installation procedures

Step1:

According to figure 5-2, assemble components (3) and (4) for two sets (left and right) by M6*40 screws with grommet or spring grommet between the screw and screw nut using components (7), (8), (9), and (10).

Step2:

According to figure 5-2, drill two holes on the wall by electrical driller with fitting size measured from the metal rack. Then fix the component (2) on the wall by component (12).

Step3:

Assemble the two combined entities (left and right) from Step1 with component (2) by M6*20 screws with grommet or spring grommet between the screw and screw nut using components (7), (8), (9),

and (10). Then press the plastic cap (component (14)) into component (3).

Step4:

Screw two antenna sets(component (11) and component (13)) onto the two sides of component (3) tightly with antenna facing the outer side.

Step 5:

Fix the radio port (component(1)) on the rack by M6*20 screws with grommet or spring grommet between the screw and screw nut using components (6), (8), (9), and (10), and the installation is complete.

Step 6:

According to figure 5-4, connect ANT0, ANT1, LINE cable, and the EARTH cable to the RP.

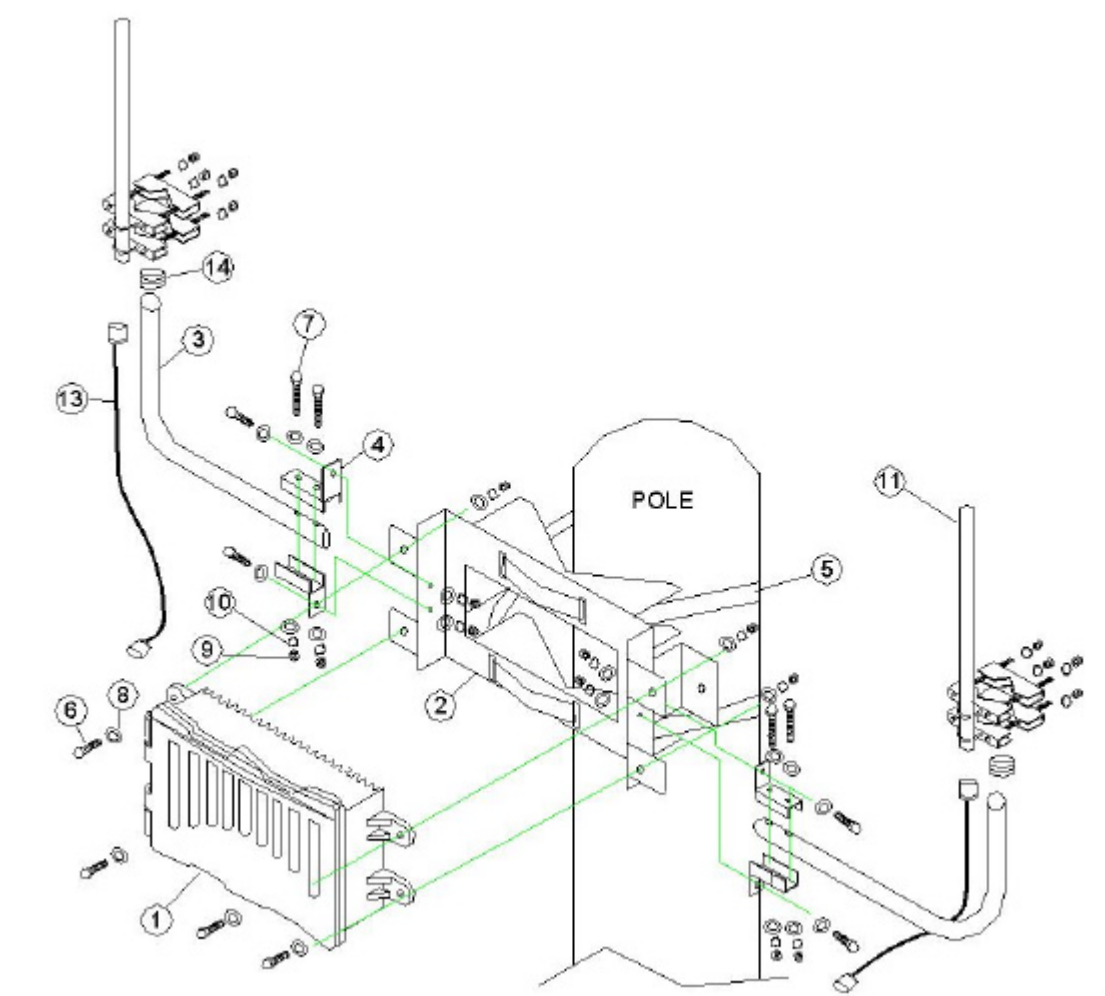


Figure. 5-1

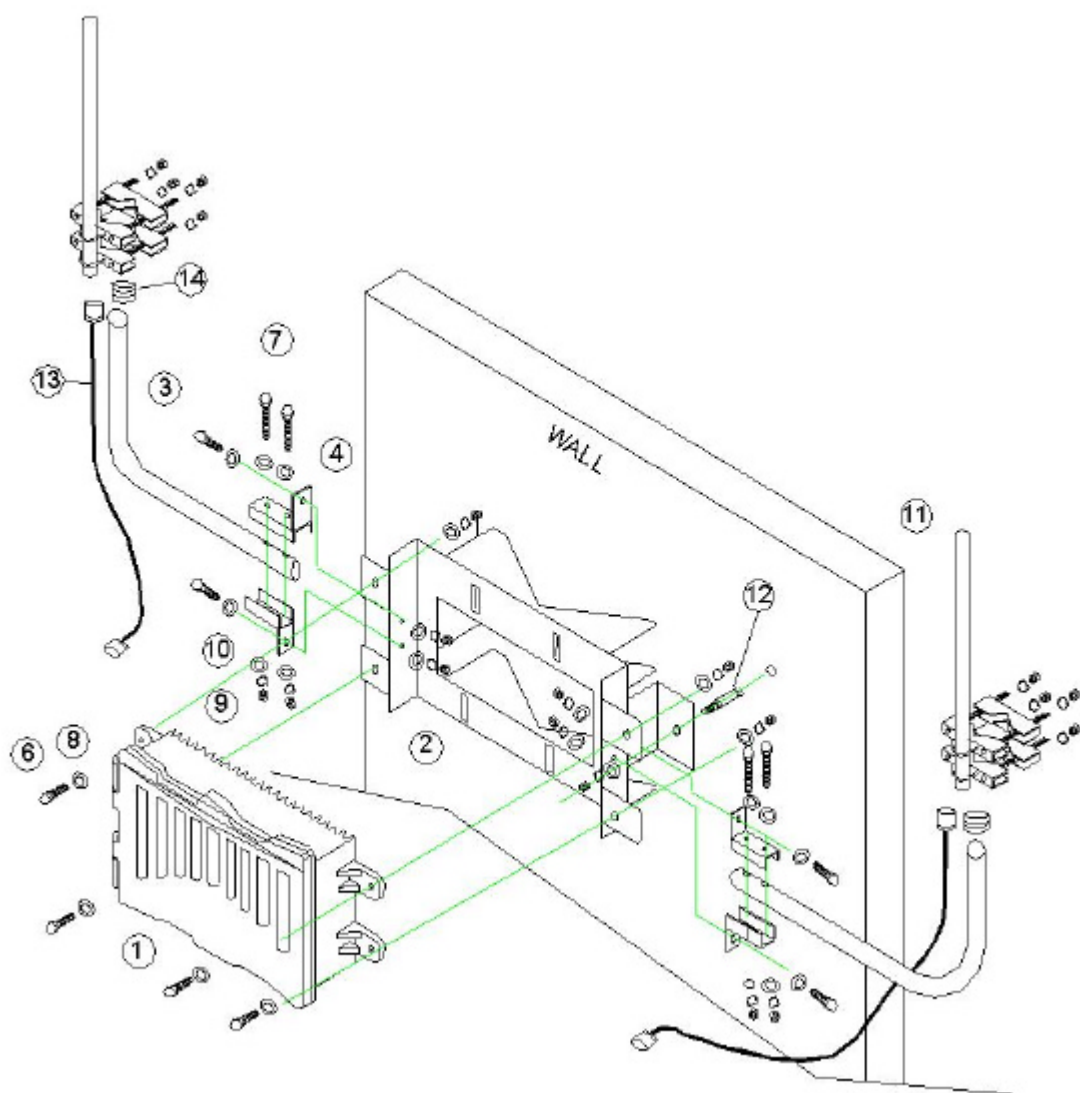


Figure. 5-2

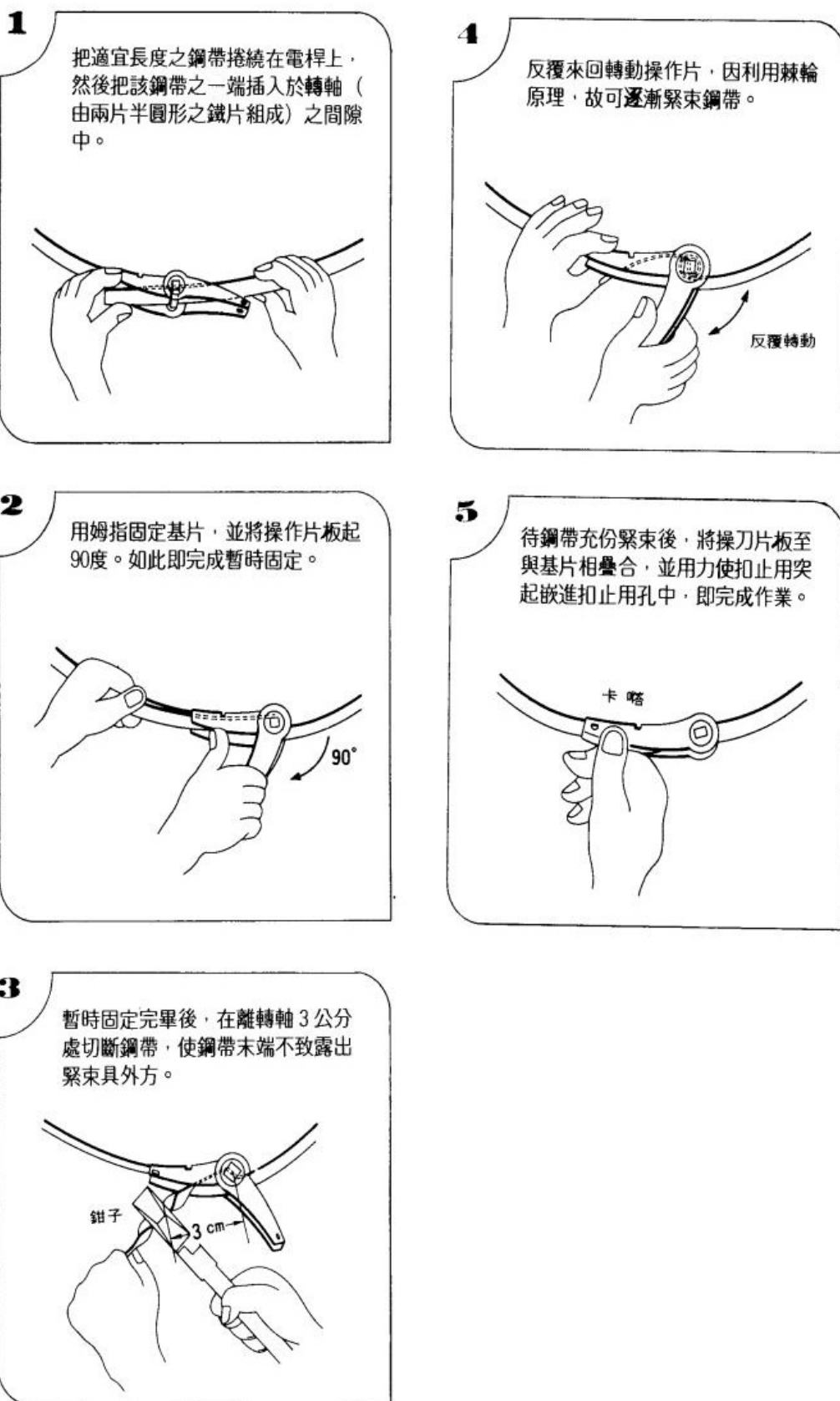


Figure. 5-3

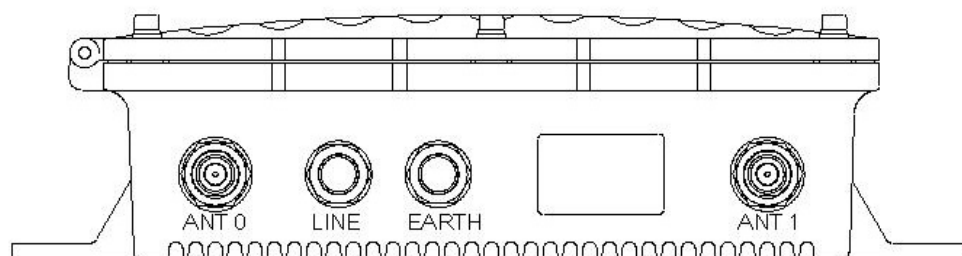


Figure. 5-4