

Figure 11 - CPU (top, CAN's removed)

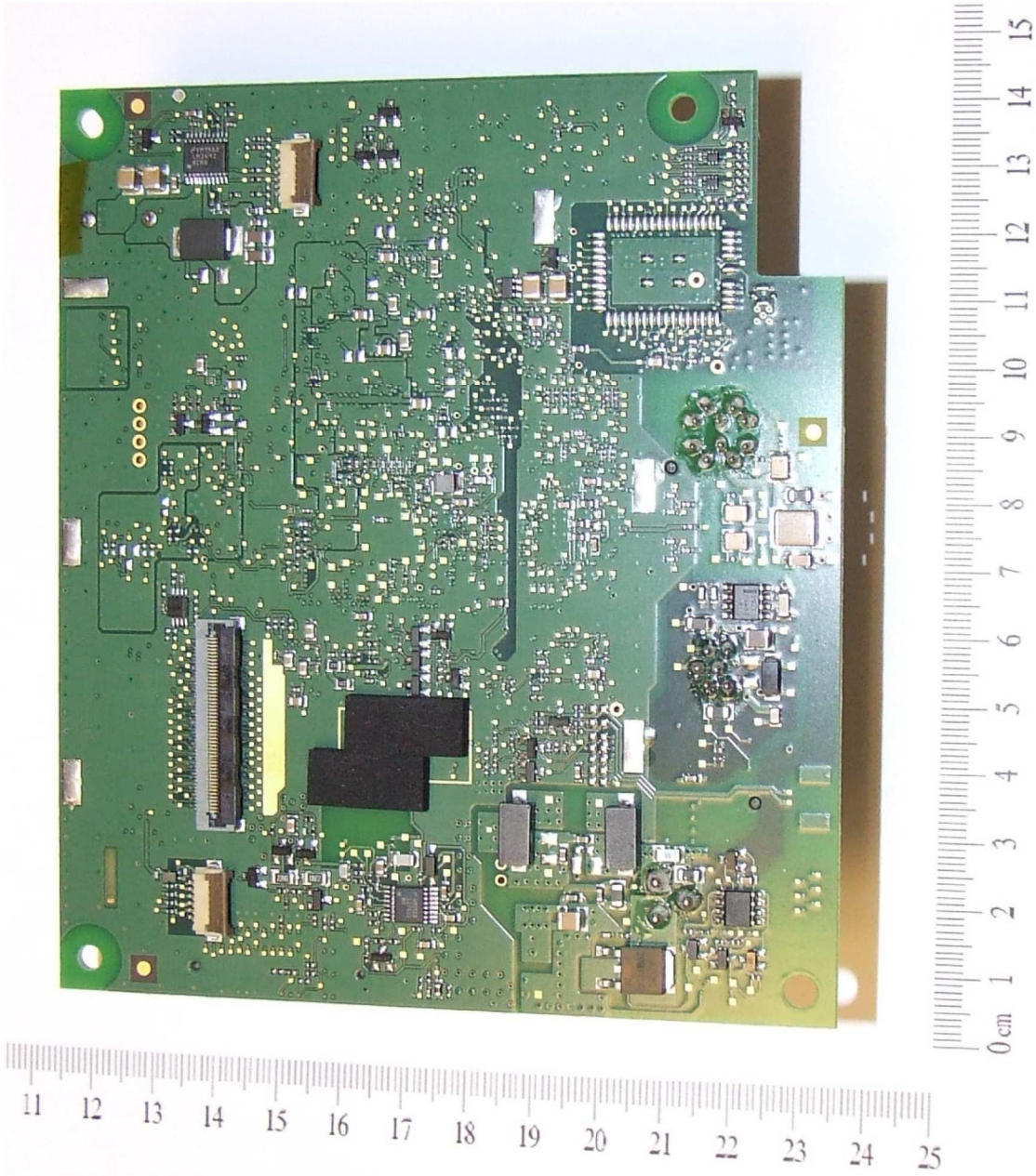


Figure 12 - CPU (bottom)

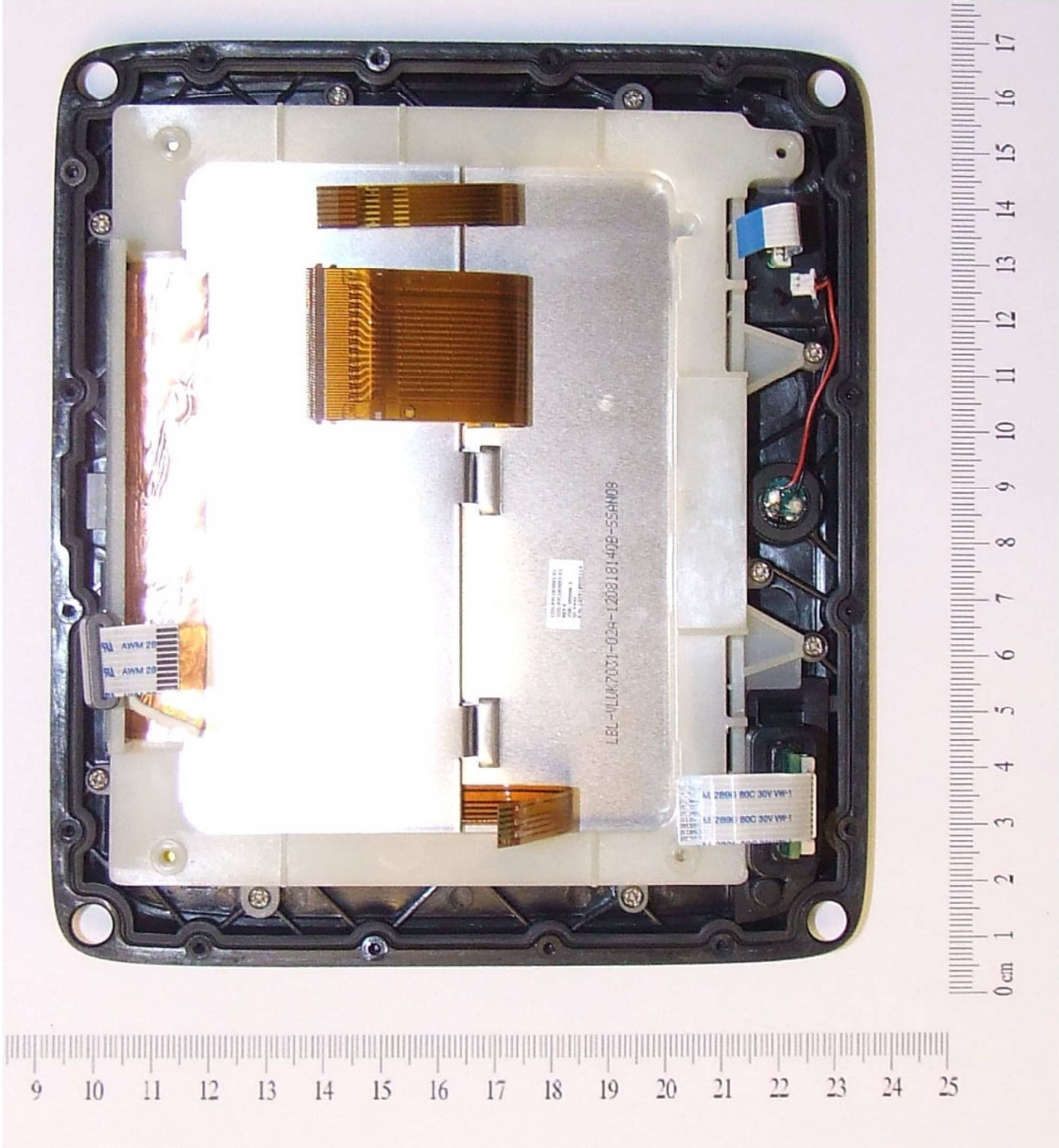


Figure 13 - Rear of LCD (CPU PCB removed)



Figure 14 - Front of LCD

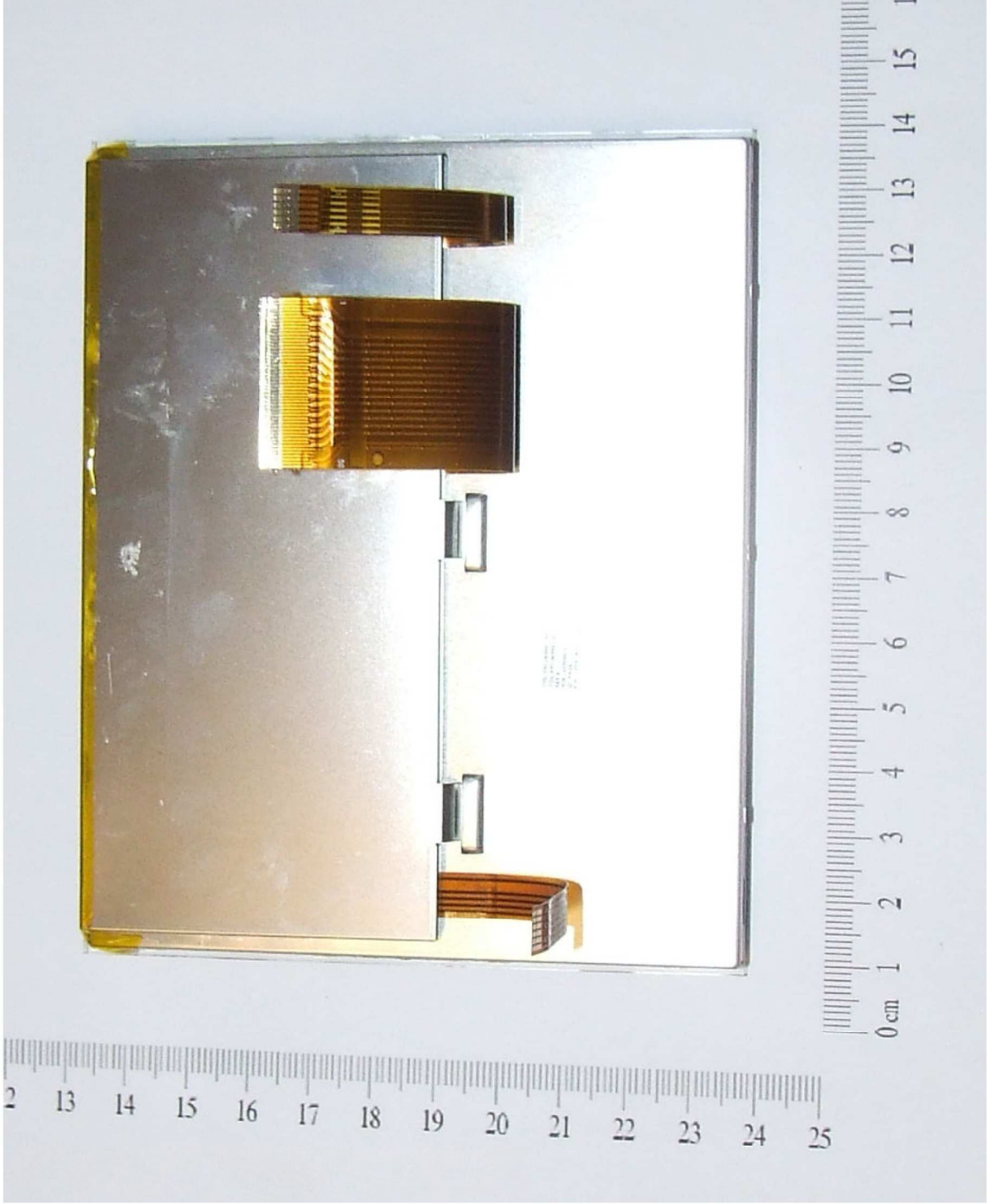


Figure 15 - Rear of LCD

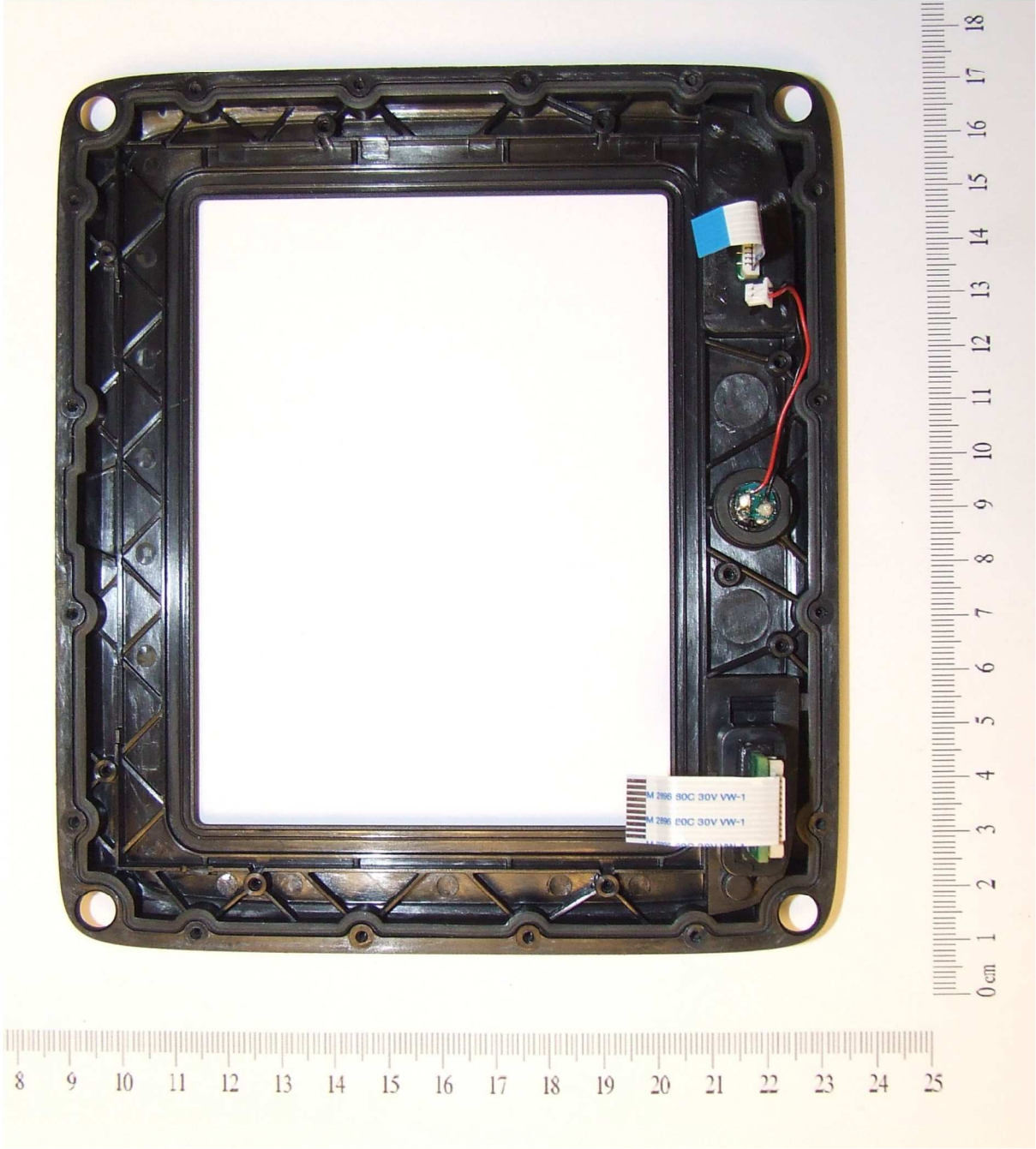


Figure 16 - Rear of front fascia

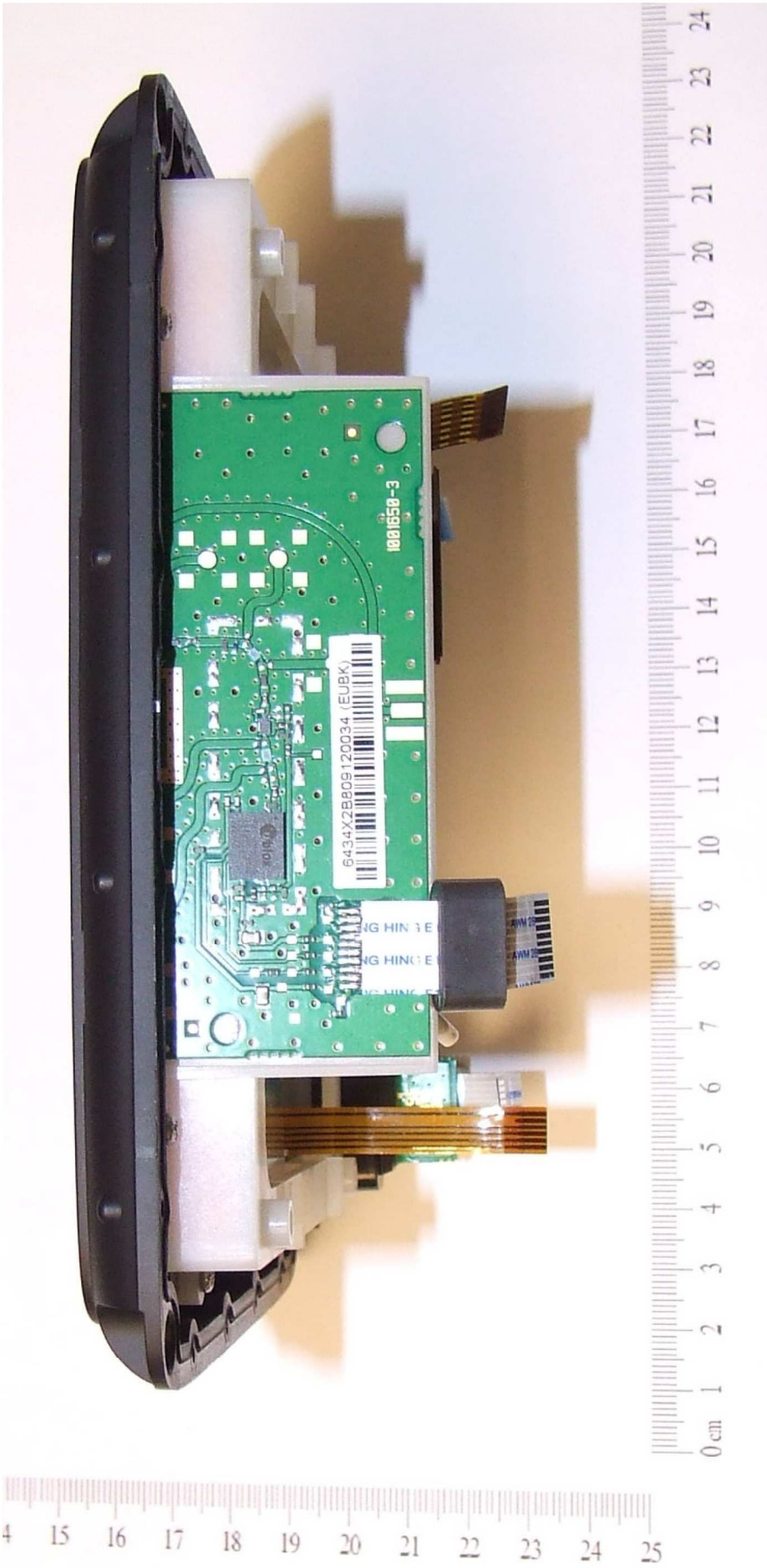


Figure 17 - GPS PCB (fitted)

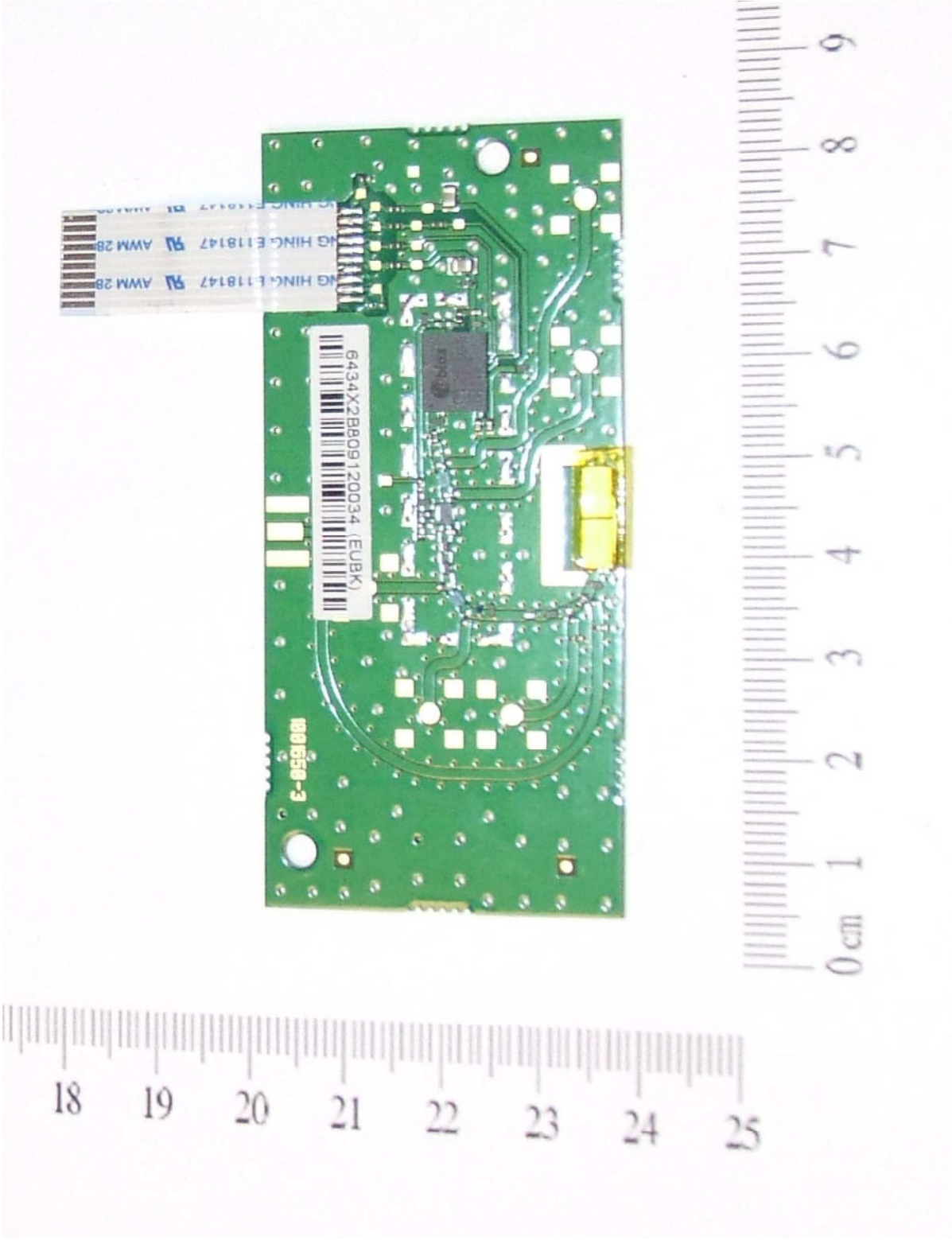


Figure 18 - GPS PCB (top)

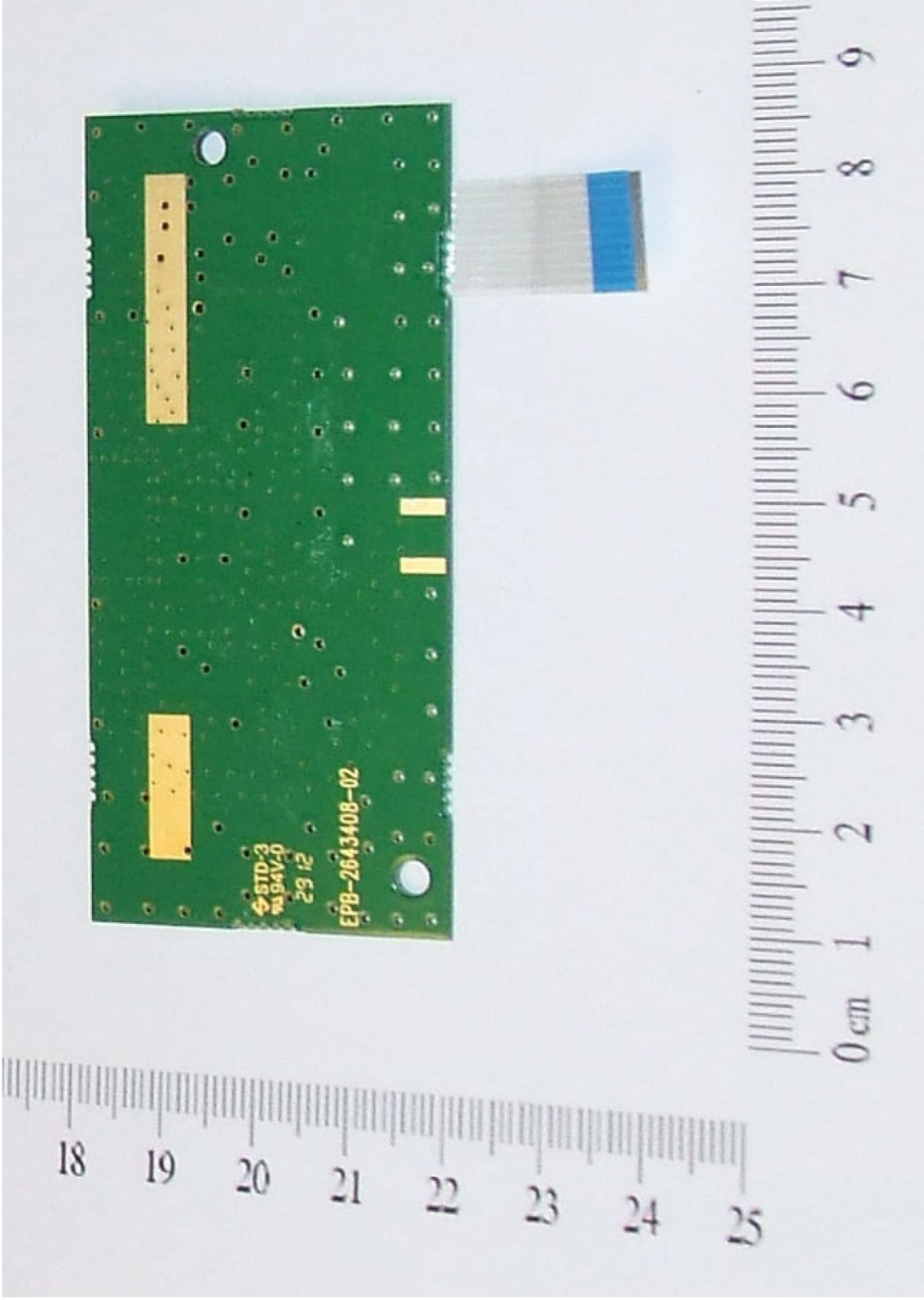


Figure 19 - GPS PCB (bottom)

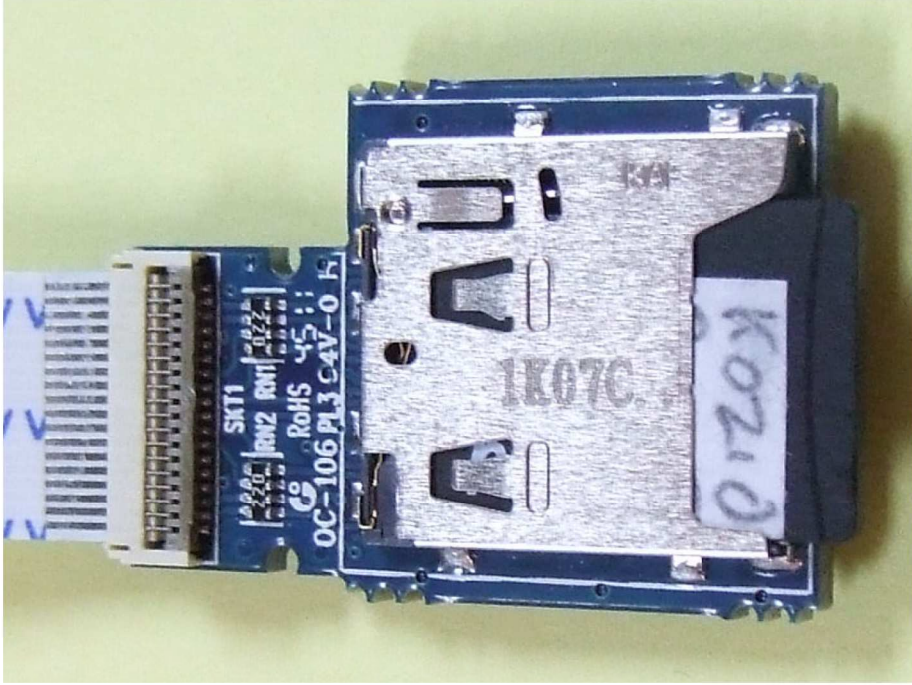


Figure 20 - Micro SD Reader (top)

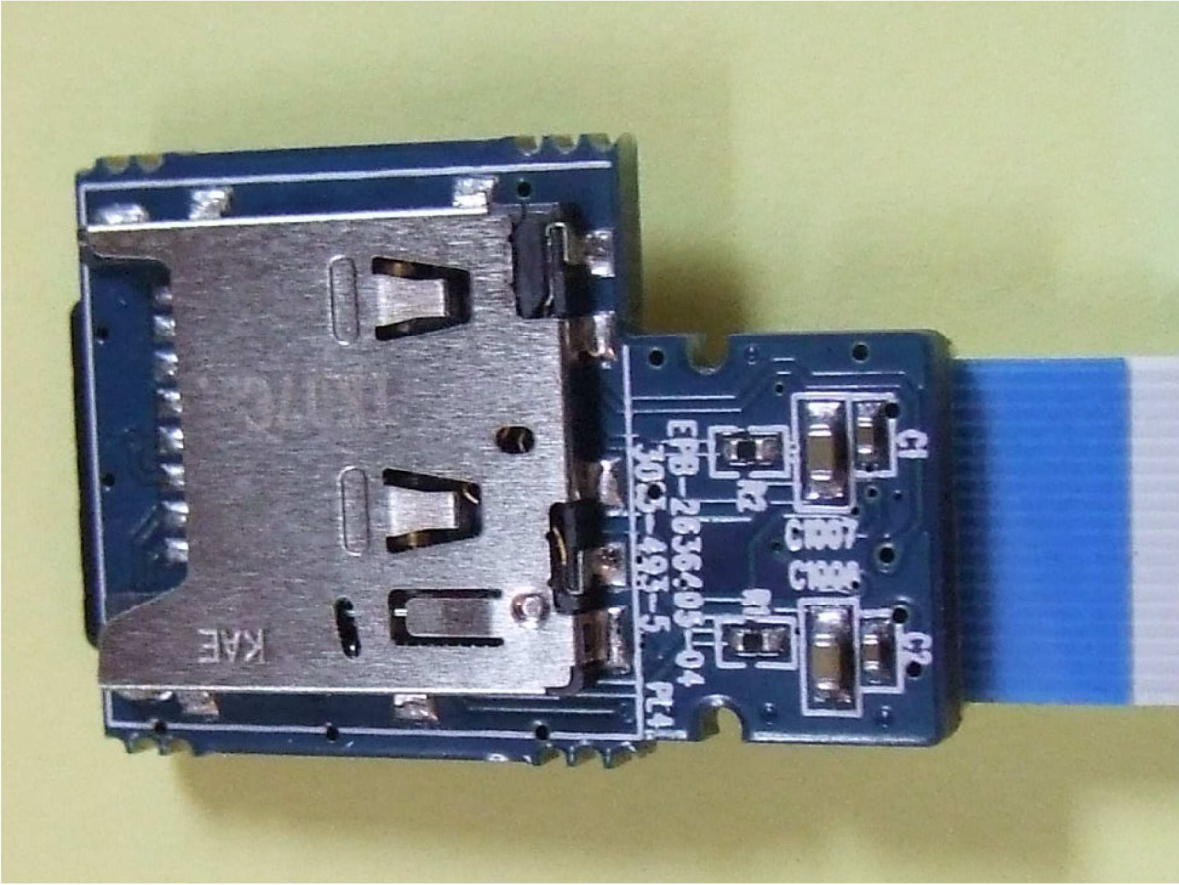


Figure 21 - Micro SD Reader (bottom)