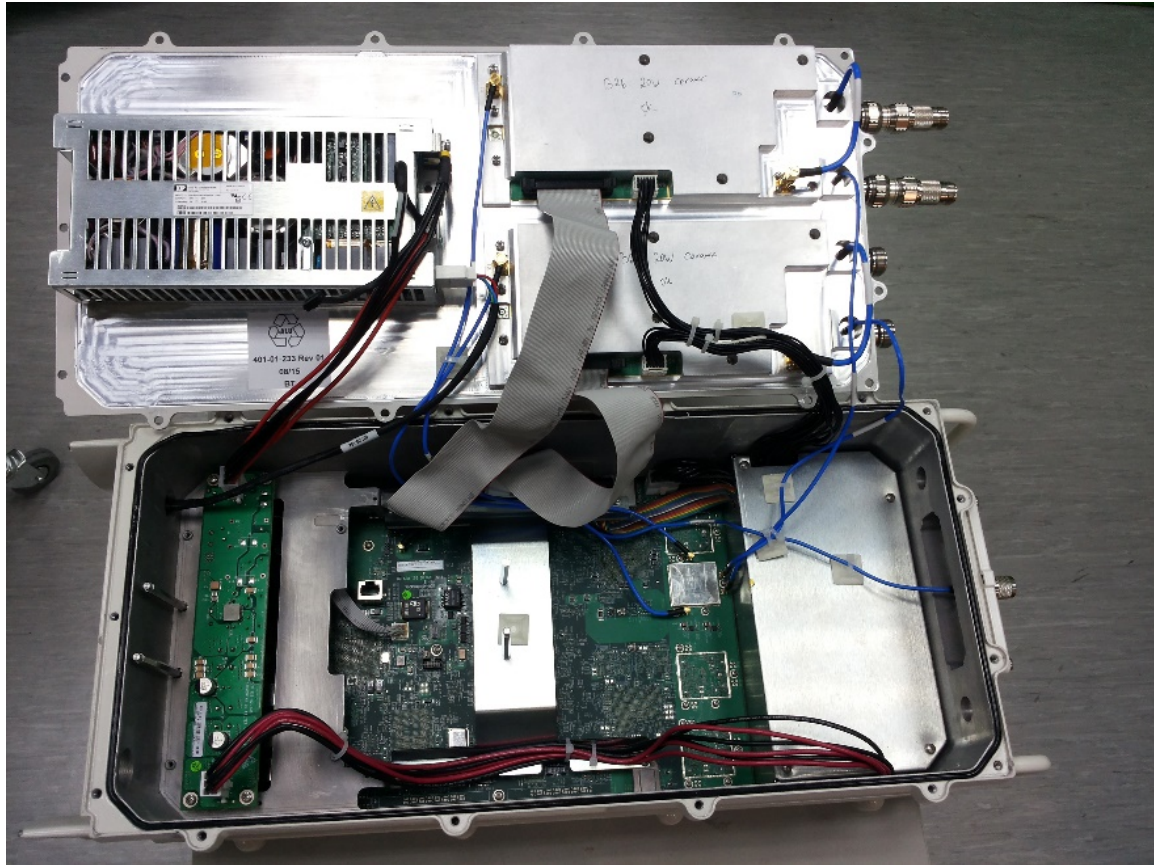


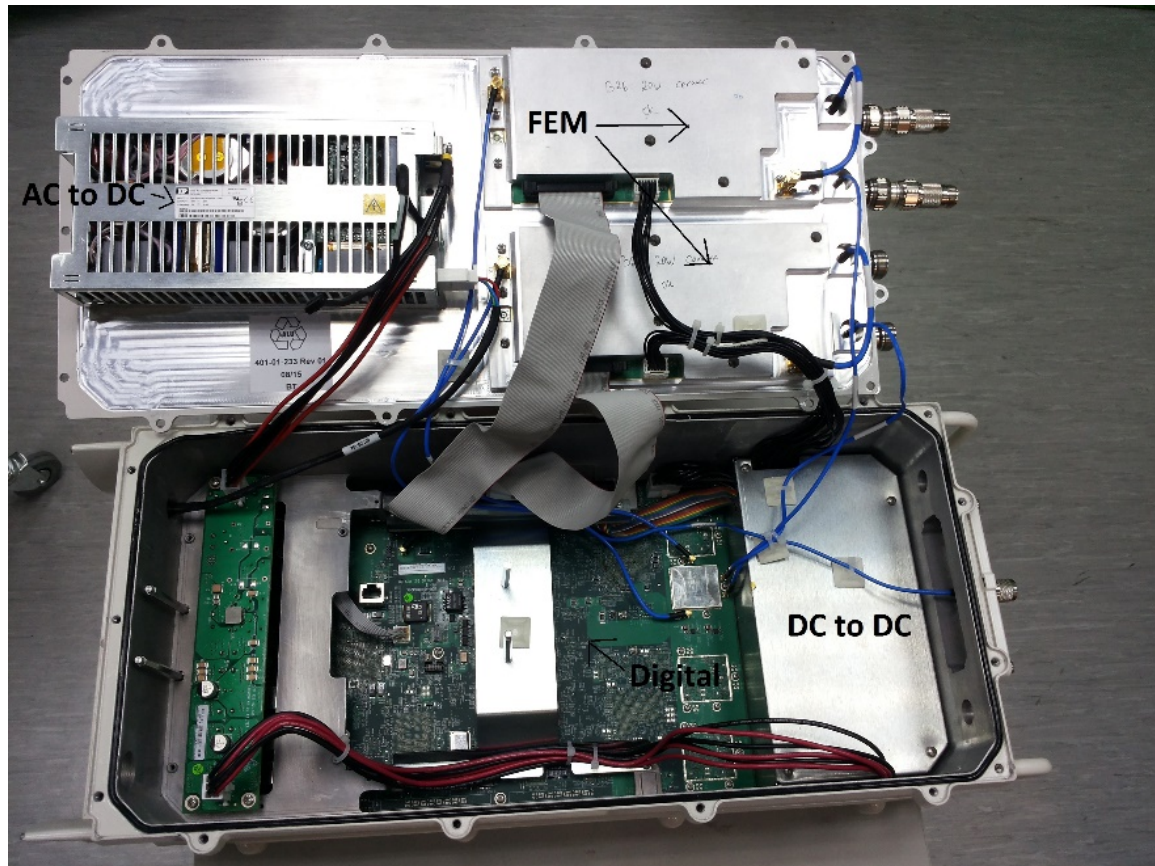
INTERNAL PHOTOGRAPHS

This document contains 9 photographs

Photograph No.1
“AirHarmony 4000 866 MHz (B26)” base station internal view



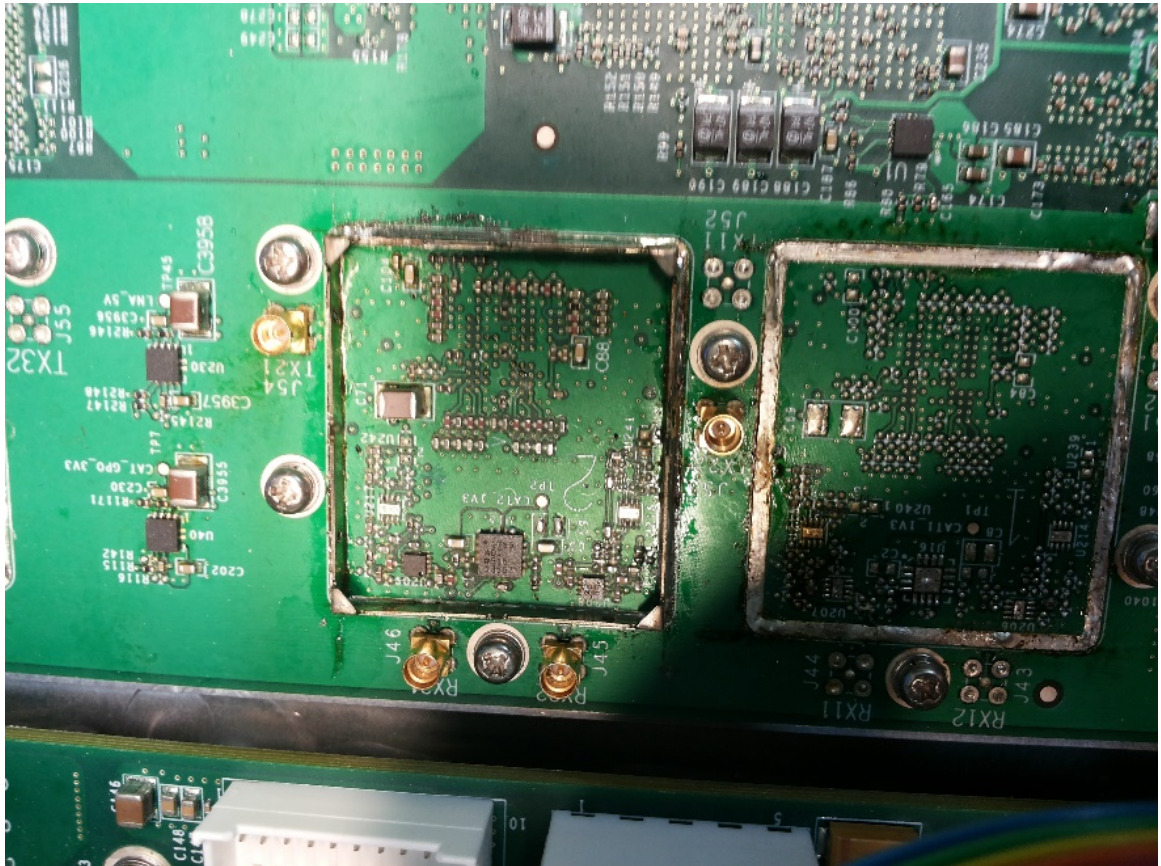
Photograph No.2
“AirHarmony 4000 866 MHz (B26)” base station internal view



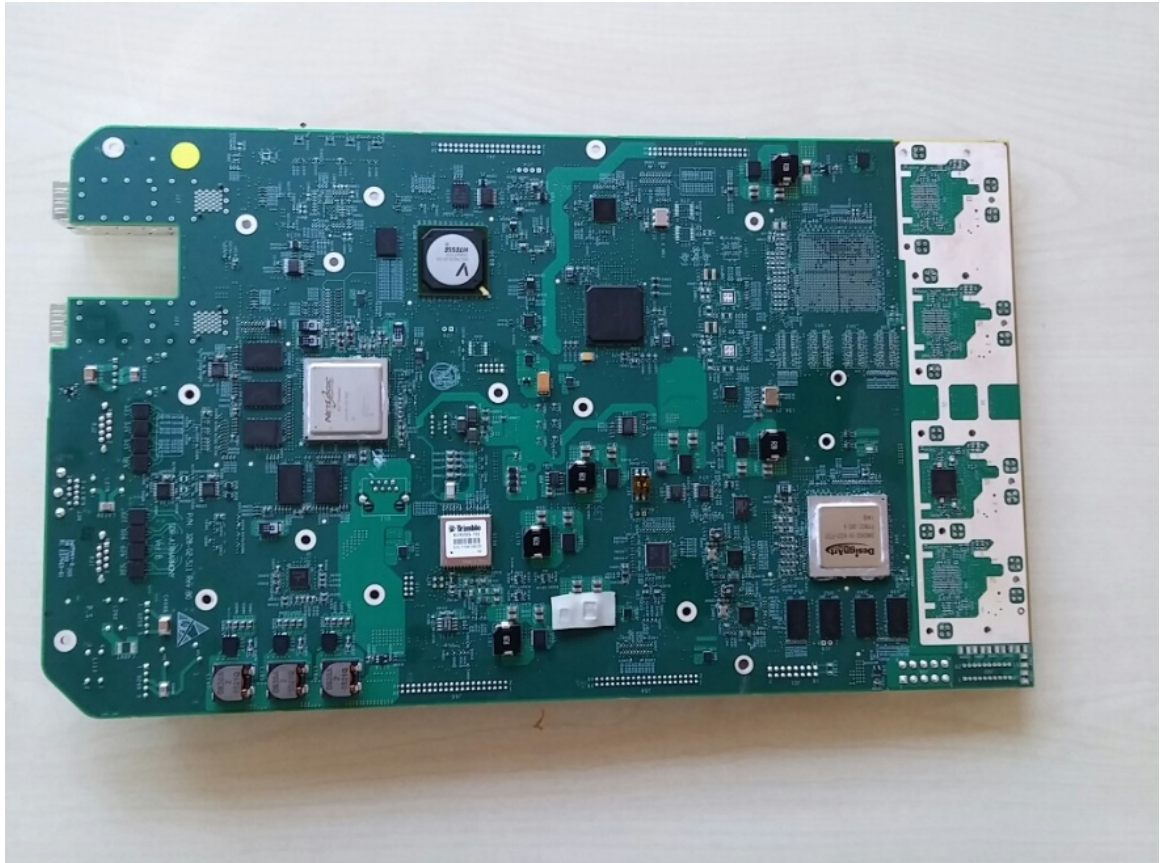
Photograph No.3
Main board front view



Photograph No.4
Main board close view



Photograph No.5
Main board second side view



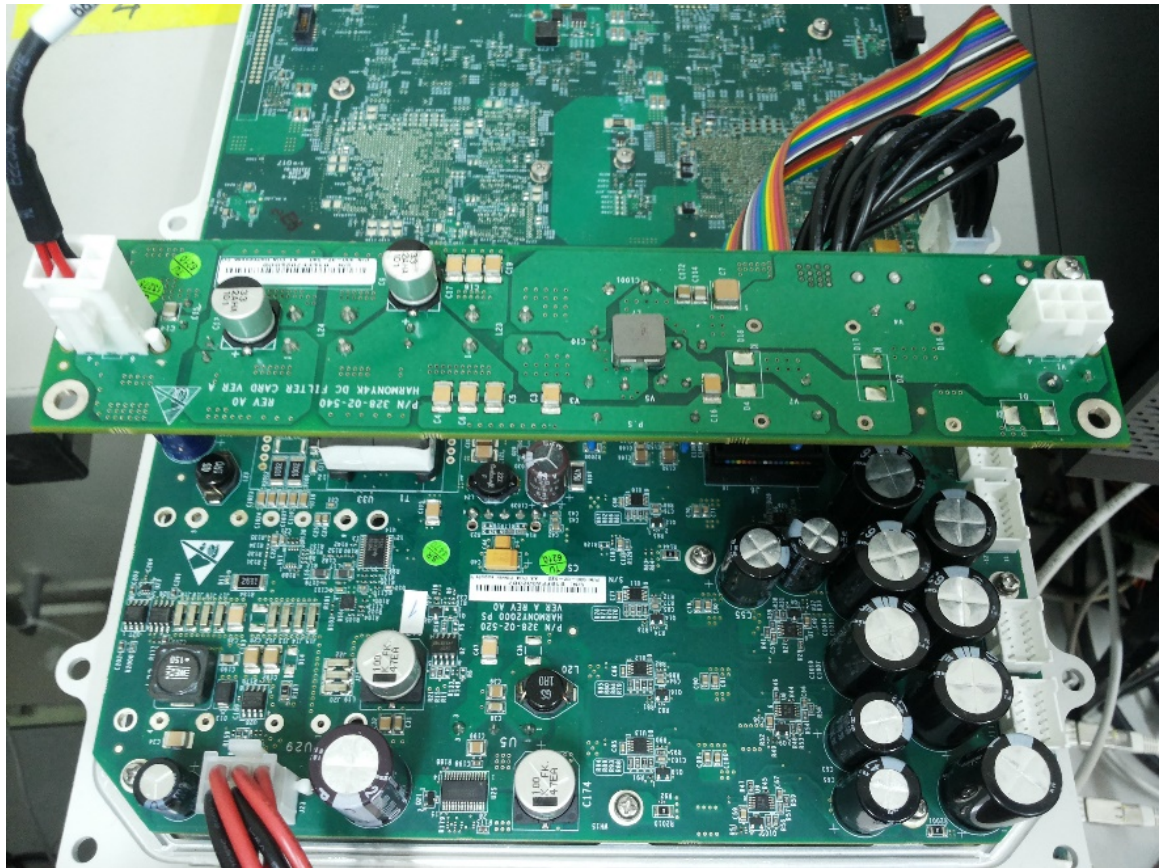
Photograph No.6
FEM device PA front view



Photograph No.7
FEM device PCA second side view



Photograph No.8
DC to DC converter



Photograph No.9
AC to DC power supply

