

Direction B = Indoor Sector

2W B41 eNB + Wifi



Direction A = Outdoor Sector

Mode 1

5W B41 eNB + UE Relay in B41 at 2 x 23dBm

Mode 2

5W B41 eNB + UE Relay in B25 at 2 x 20dBm

Outdoor sector

**Backhaul (Band 25)**  
**(UE Relay: Sercom)**

Pout 20 dBm (capped)  
Antenna 6 dBi  
2 x 2 29  
Burst 0.794328235 W  
Duty Cycle 1

Average Pout 794.3282347 mW

Total 5219.247015 mW

20cm Distance from enclosure 0.925861608 mW/cm<sup>2</sup>  
Threshold 1 mW/cm<sup>2</sup>

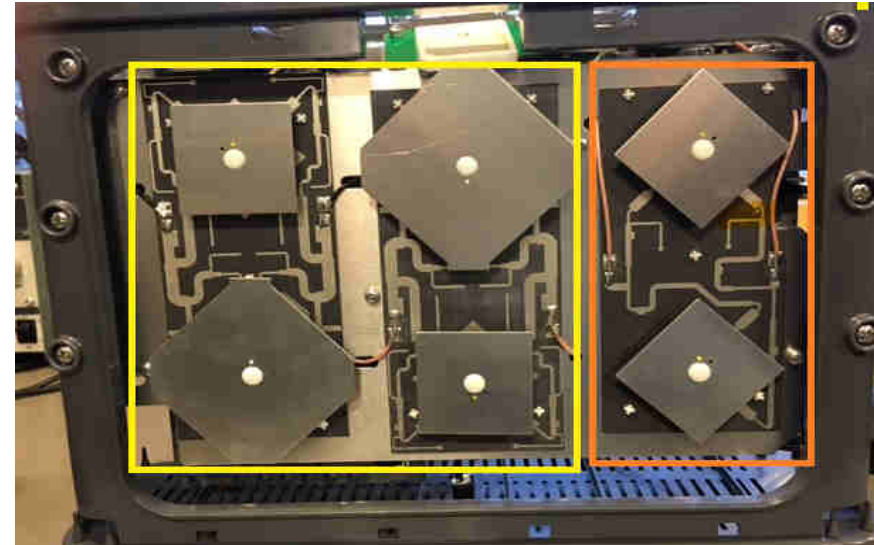
1.038630156 mW/cm<sup>2</sup>

antenna spacing from enclosure 1.2 cm

**Access (Band 41)**  
**(eNB: Airspan)**

27.75 dBm total power (worst case)  
10 dBi for both elements combined  
5.956621  
0.742857

4424.919 mW



Backhaul Antenna

eNB antenna

**Backhaul (Band 41)**  
**(UE Relay: Sercom)**

Pout 23 dBm  
Antenna 7.5 dBi  
2x2 33.5  
Burst 2.238721139 W  
Duty Cycle 0.228571429

Average Pout 511.7076888

**Total 4936.626469 mW**

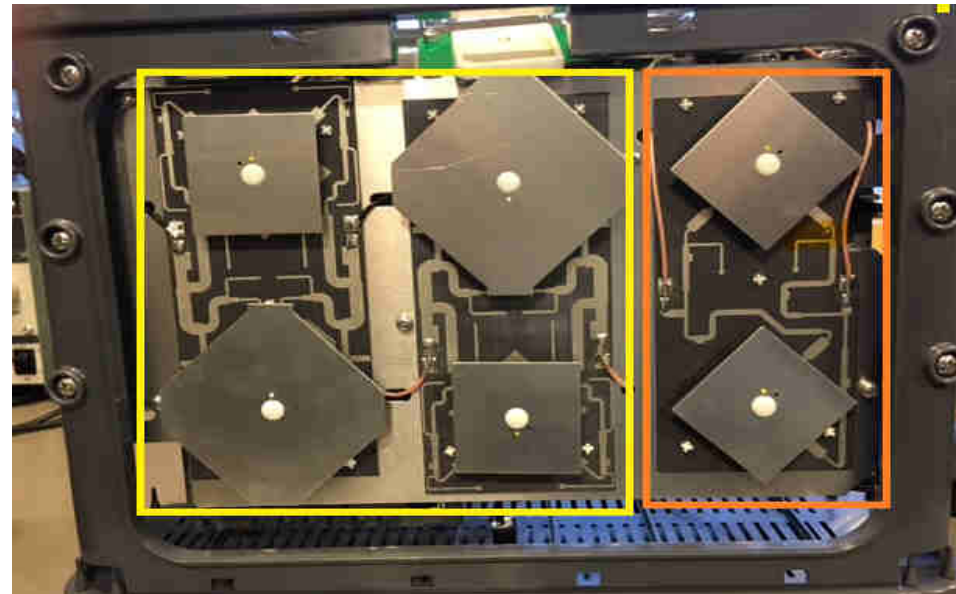
20cm Distance 0.982110631 mW/cm<sup>2</sup>  
Threshold 1 mW/cm<sup>2</sup>

**Access (Band 41)**  
**(eNB: Airspan)**

27.75 dBm total power (worst case)  
10 dBi for both elements combined

5.956621  
0.742857

4424.919



**Wifi 2.4**

Pout 22.94907 dBm  
Antenna 3.2 dBi  
1x1 26.14907  
Burst 2 W  
Duty Cycle 1

Average Pout 2000

**Total 4349.121 mW**

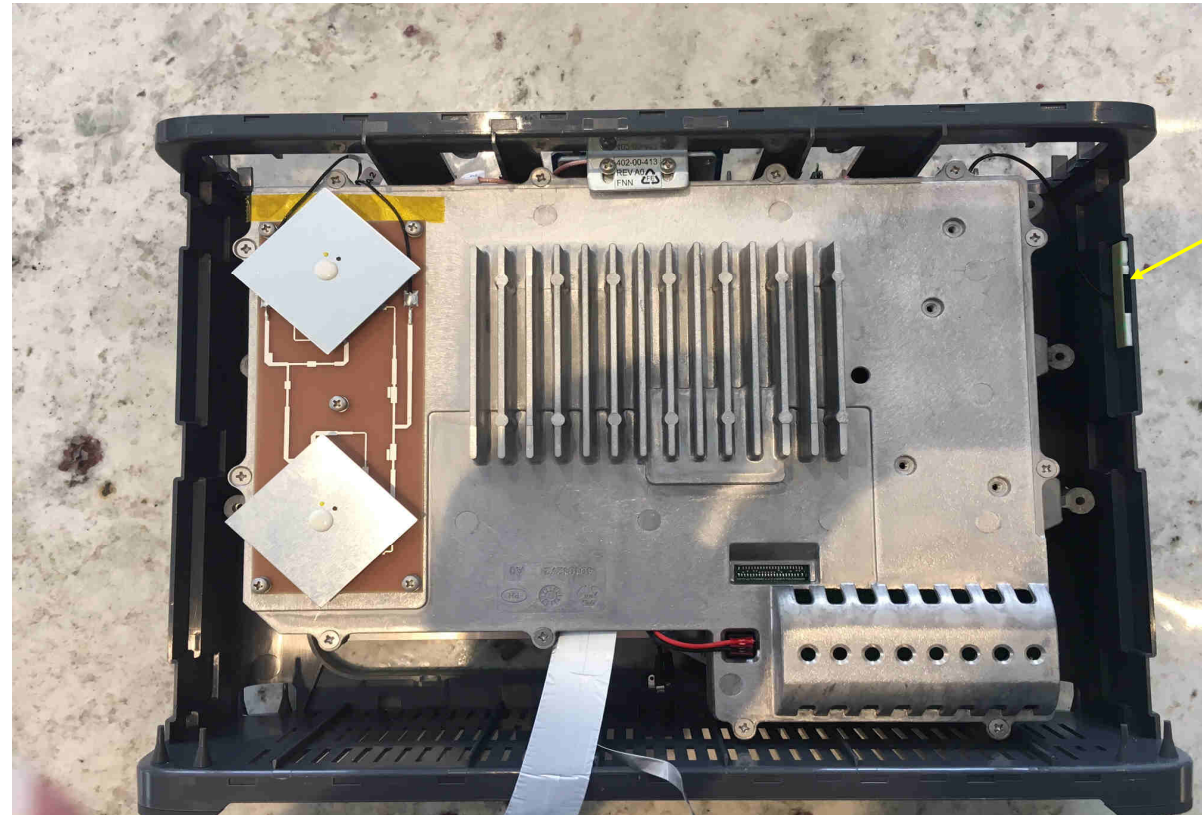
20cm Distance 0.86523 mW/cm<sup>2</sup>  
Threshold 1 mW/cm<sup>2</sup>

0.865475 mW/cm<sup>2</sup>

**Access (Band 41)  
(eNB: Airspan)**

Pout 23 dBm  
Antenna 9 dBi  
2 x2 35  
Burst 3.162278  
Duty Cycle 0.742857

2349.121



WiFi antenna

na