

DR-915 Data Radio Module INTEGRATOR'S GUIDE

TABLE OF CONTENTS

General Information 3

RF Exposure Statement 3

Configuration 6

Specifications 14

DR-915 Mechanical Overview 15

Pin Definitions 16

Approved Antennas 18

In-System Configuration 19

FCC Compliance Warning and Class B Statement 24

DR-915 Data Radio

General Information

This DR-915 is a frequency hopping spread spectrum data transceiver operating in the 902-928 MHz ISM band. The unit is designed to operate under Part 15.247 of the FCC rules and regulations and is designed as an OEM module for integration into other products or field devices. When installed using an approved antenna, the user need only ensure that the radio's FCC label or a copy of the FCC label is clearly visible on the outside of the integrated product.

Caution: *If this radio is integrated into another product, the user is responsible for complying with the external labeling requirements as directed in the FCC Rules and Regulations part 15.19. To avoid obtaining an FCC certification, the user may only use antennas that have been tested and approved for use with this radio.*

The unit operates on 25 discrete frequencies within the ISM band, each frequency about 800kHz apart. Using a frequency agile phase-locked loop synthesizer, the radio is able to scan all 25 channels and quickly acquire synchronization with a transmitting radio.

The radio is connected to a host device using a 10-pin SIP header. This connection provides the radio with the required DC power source, allows it to be programmed and configured and provides all I/O lines for both an asynchronous serial as well as an SPI interface.

DR-915 DATA RADIO REGULATORY

FCC RF Exposure Statement

This device complies with FCC radiation exposure limits as set forth for an uncontrolled environment.

This device should be installed and operated with a minimum separation distance of 20 cm between the radiator and your body.

**DR-915 DATA RADIO
CONFIGURATION**

Default Settings

Serial Baud	9600 bits/second
Port.....	UART
RX buffer size	190 bytes*
TX buffer size	190 bytes*
CTS assert.....	180 bytes*
CTS de-assert	150 bytes*
TX assert.....	180 bytes*/5 mS
Channel.....	1
Source Address	1
Destination Group	1
Destination Address	1
Acknowledgement.....	None
Power save.....	Off

*Factory setting; cannot be changed.

DR-915 DATA RADIO CONFIGURATION

The DR-915 is supplied with an easy to use Windows98™ configuration program. The configuration program allows the user to control the operation of their radio network.

Installing

The configuration software does not require an installation. Simply run it from the CD labeled "DR-915 Tools" or copy it onto another drive. Start the program by locating and double clicking on the "Programmer" icon. This will launch the configuration program and display the screen below.

DR915L	DR915L Rpt	DR915LT	DR915
PC	Path Management	Flash	DR915 Rpt

Addressing

Source Group: 1

Destination Group: 1

Source Address: 1

Destination Address: 2

Tx

Tx Holdoff Time: 5 ms

Misc

Model: DR-915

Version: v1.0

Packet Size: 178

CTS De-Assert: 178

CTS Assert: 89

Preamble Bytes: 266

ESN: 4294967295

Acknowledgement Packet

☒ No AckBack

☐ Wait for AckBack

Retries: 50

Timeout: 200 ms

Communications Port

☐ SPI

☒ UART

Baud Rate: 57600

Repeaters

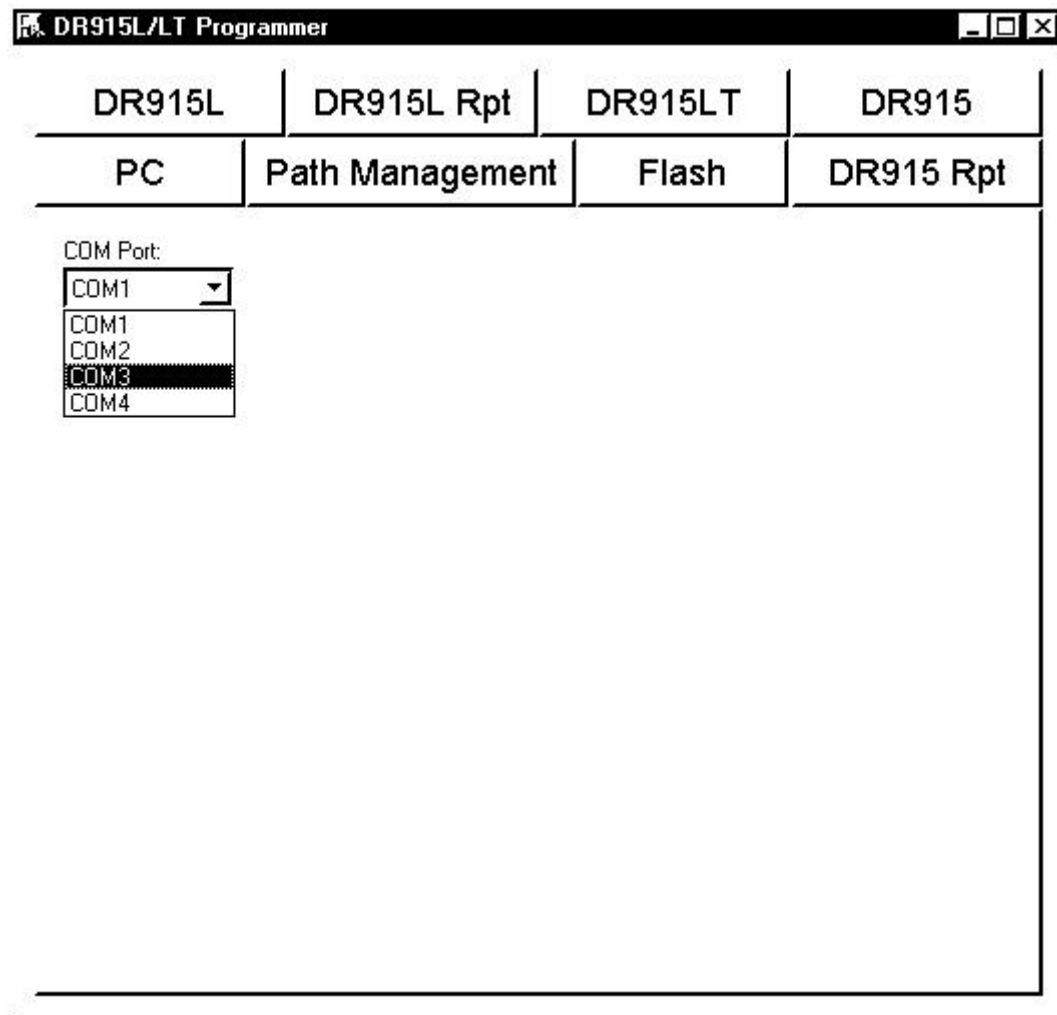
Number of Repeaters in System: 0

Read succeeded.

Read

Program

Click on the “PC Settings” tab, then select which COM port will be used to connect to the data radio. As shown below, COM1 thru COM4 are available. This setting will be retained the next time the configuration program is run.



Getting Started

To configure the radio, click on appropriate tab for the radio being configured. Then select the radio Communications Port. The default setting is for asynchronous serial mode, UART (Universal Asynchronous Receiver/Transmitter). The default baud rate is 9600 bits per second. The interface baud rate can be set to standard values between 2400 and 57600 as shown on the following page. This mode supports 8 data bits, 1 stop bit and no parity.

DR-915 OEM DATA RADIO MODULE

DR915L/LT Programmer

DR915L	DR915L Rpt	DR915LT	DR915
PC	Path Management	Flash	DR915 Rpt

Addressing

Source Group:

Destination Group:

Source Address:

Destination Address:

Tx

Tx Holdoff Time: ms

Misc

Model:

Version:

Packet Size:

CTS De-Assert:

CTS Assert:

Preamble Bytes:

ESN:

Acknowledgement Packet

☐ No AckBack

☒ Wait for AckBack

Retries:

Timeout: ms

Communications Port

☐ SPI

☒ UART

Baud Rate:

Repeater:

Number of Rep:

Read succeeded.

DR915L/LT Programmer

DR915L	DR915L Rpt	DR915LT	DR915
PC	Path Management	Flash	DR915 Rpt

Addressing

Group 1:

Group 2:

Tx

Channel:

Misc

Model:

Version:

Preamble Bytes:

ESN:

Debug Data

☐ Enable

UART Baud Rate:

Status

DR-915 Repeater

Addressing

The radio has been designed to be very versatile in its addressing functions. Each radio has its own identifier consisting of a group number and address number.

The Source Group specifies which group of radios the unit being configured belongs to. The Source Address specifies the address within that group that uniquely identifies this radio. The radio will decode packets containing a Destination Group and Address matching its own. With the exception of broadcast messages, all others will be ignored.

Broadcast messages are those messages where the destination address is 0 and the group is the same as the radio receiving it, or those messages where the destination address and group are both 0. When the destination group is set to 0, all radios in all groups will decode the packet.

Likewise, the Destination Group specifies which group of radios the transmissions will go to. The Destination Address specifies the individual radio within that group that will receive the message.

Channel

The Channel selects the frequency the radio will transmit and receive on. There are 60 channels available for the use of multiple networks or to avoid interference. Radios must be on the same channel to communicate.

TX Hold Off Time

TX Hold Off Time sets the amount of time that must elapse after the last byte to be transmitted is received by the radio before a transmit packet will be initiated. Setting this value higher will prevent numerous small packets from being sent when the transmit data is not continuous. The default setting will be adequate for most applications.

Acknowledgement (Ack-Back™)

The DR-915 has powerful, built-in, path management features designed to make OEM integration quick and easy. Activating packet acknowledgement will virtually guarantee all data transmitted is received. Any packet transmitted by the DR-915 is then acknowledged by the receiving radio. If any packet is not acknowledged, the transmitting radio will resend the data. While reducing throughput, this feature also

handles missed transmissions as well as performs path management, allowing full duplex communications.

The Retries field specifies the number of attempts the radio will make in trying to resend unacknowledged packets. The Timeout field determines how long the radio will wait for the acknowledgement before resending.

Number of Repeaters

The range of the DR-915 may be extended by using repeaters. Repeater modules receive data packets on one group code and retransmit the packet on another group code. For example, a repeater configured with group codes 3 and 4 will translate the following packets and retransmit them as follows:

- A packet received with a destination group code of 3 will be received and retransmitted with a destination group of 4.
- A packet received with a destination group code of 4 will be received and retransmitted with a destination group of 3.

This method of group code translation guarantees that data is transferred through the repeater and not directly between radios.

When the DR-915 is in Ack-Back™ mode and there are repeaters in the system, the amount of time needed to receive packet acknowledgements increases. By specifying the number of repeaters in the Configuration program, this delay is calculated and the radio is updated correctly. Always set this field with the maximum number of chained repeaters in the system.

Path Management

The DR-915 has powerful path management tools to help ensure successful field installations. The Path Management window has two modes, Continuous and On Sync.

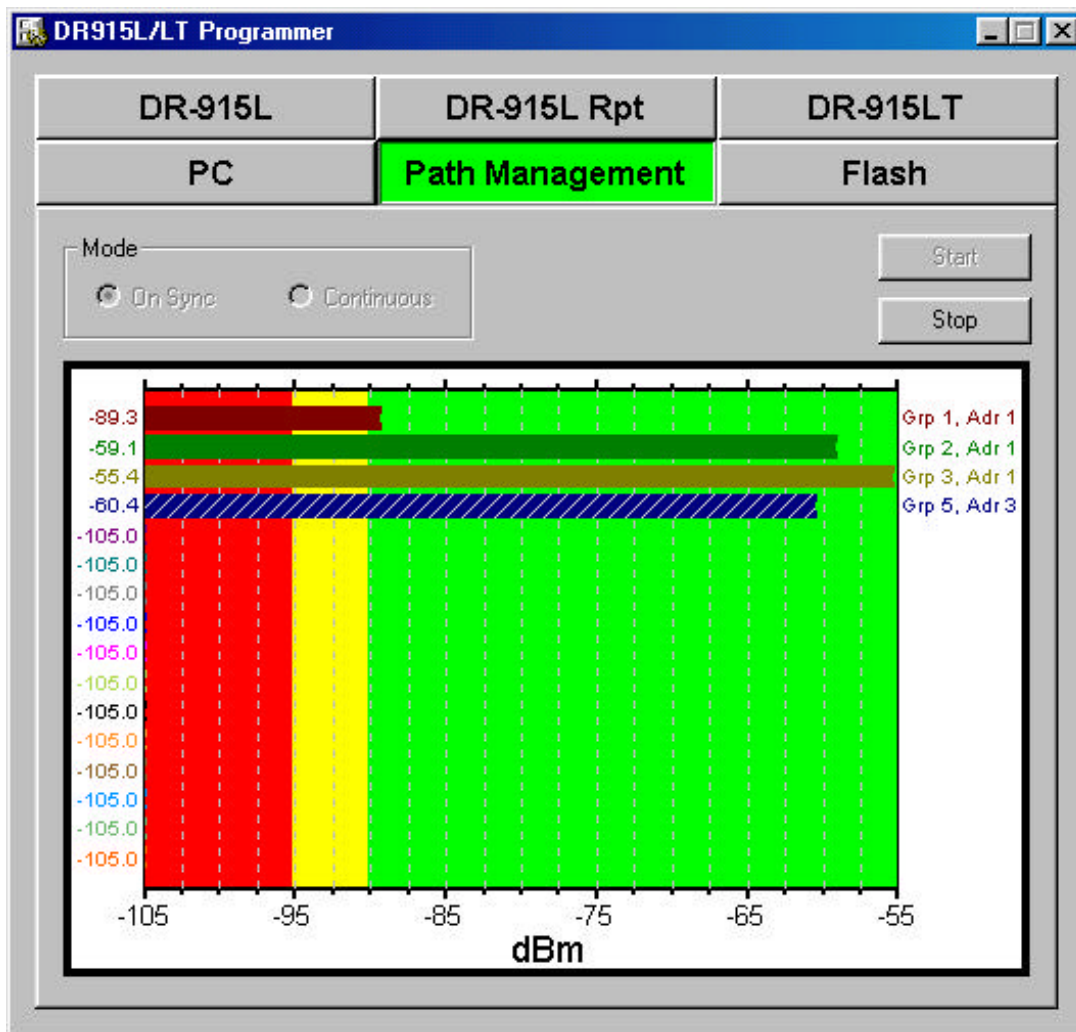
The Continuous mode allows the installer to look at competing signals on the radios channel and determine if there is a potential interference problem. Running in this mode for an extended period of time will show the installer the level of the strongest signal seen by the radio. The solid indicator needle indicates the current signal level being received while the dashed indicator needle shows the strongest signal received. Clicking the Stop button will reset the dashed indicator.

Continuous Mode Signal Monitoring

DR-915 OEM DATA RADIO MODULE

The On-Sync mode allows the installer to look only at radio transmissions for DR-915 or DR-915T radios. When packets are received, the transmissions current and maximum signal strength is displayed along with the packets source group code and address. This allows the installer to ensure there is adequate signal strength with enough fade margin to guarantee reliable operation. Signals in the green area are considered very reliable, the yellow area are marginally reliable and the red area are considered not reliable.

The graph will display information on up to 16 radio addresses. As new addresses are received, they will replace the oldest ones in the graph. The last received signal is indicated by a cross hatch in the bar. Clicking on the Stop button will reset the graph information.



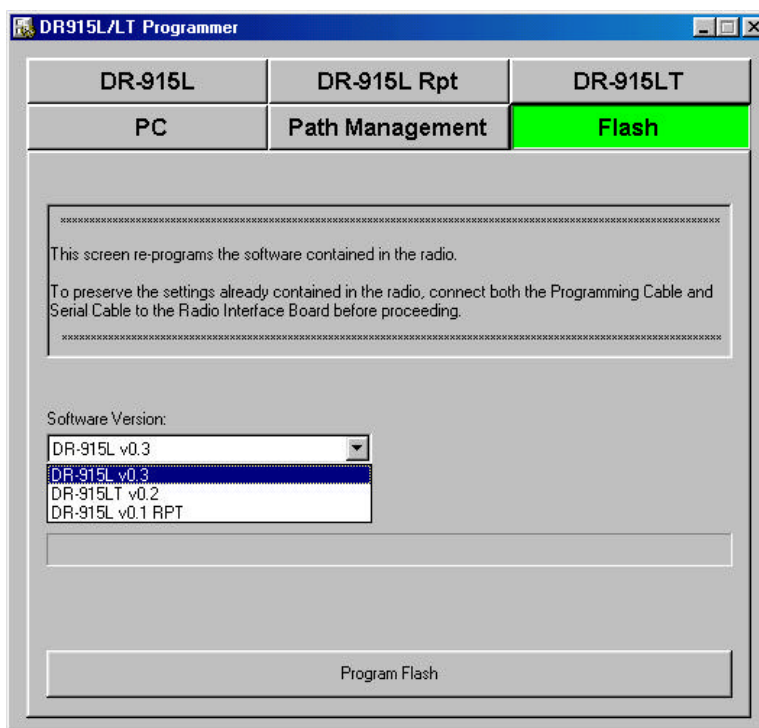
On-Sync Signal Monitoring

Code Upgrading

The DR-915 has been designed for easy field upgrades. Using the RS-232 Serial Adapter board, a DR915 Programming cable, a standard Serial Configuration cable and a current version of the DR-915 Configuration program running on the users PC, the radio can be re-flashed with new operating code. Special customer code can also be loaded in this manner.

With the radio mounted on an RS232 Serial Adapter board, connect a program upgrade cable from the programming connector, J4, on the Adapter board to the parallel port on the PC. Connect a standard DB9 male to female serial cable from the Adapter board's DB9, J2, and to the serial port on the PC. Power the Adapter board using the supplied 12-volt wall module connected to the Adapter board's power jack, P8.

Using the DR-915 Configuration program, click on the Flash tab. Select the software version from the Software Version drop-down box and then press the Program Flash button. The Configuration program will then read the setup information from the radio, upgrade the radio code and reload the original configuration.



Flash Upgrade Tab

**DR-915 DATA RADIO
SPECIFICATIONS**

Overall

Frequency	902-928 MHz
Frequency Control.....	PLL Synthesizer
Transport	Transparent, Point-to-Point Guaranteed
Data Interface	Asynchronous TTL, Synchronous Serial (SPI)
Channels	62
Configuration.....	Windows98™ Application using PC Serial Port
Duty Cycle.....	100% all modes of operation
Data Interface Rate.....	2400,4800,9600,19.2k,56k bps (N,8,1)
Temperature.....	-30 to +50 °C
Range	up to 10 miles depending on conditions
Data Encoding	Proprietary Method
Receiver Sensitivity	-101 dBm usable
Modulation	Direct FM (FSK)
RF Data Rate	50 kbps
Data Flow Control	Hardware using CTS
Transmitter Output	200mW
Error Detection	16 bit CRC

Power Requirements

Input Voltage.....	7.5 – 15 VDC
Input Current.....	70 mA Receive Mode 250 mA Transmit Mode

Regulatory

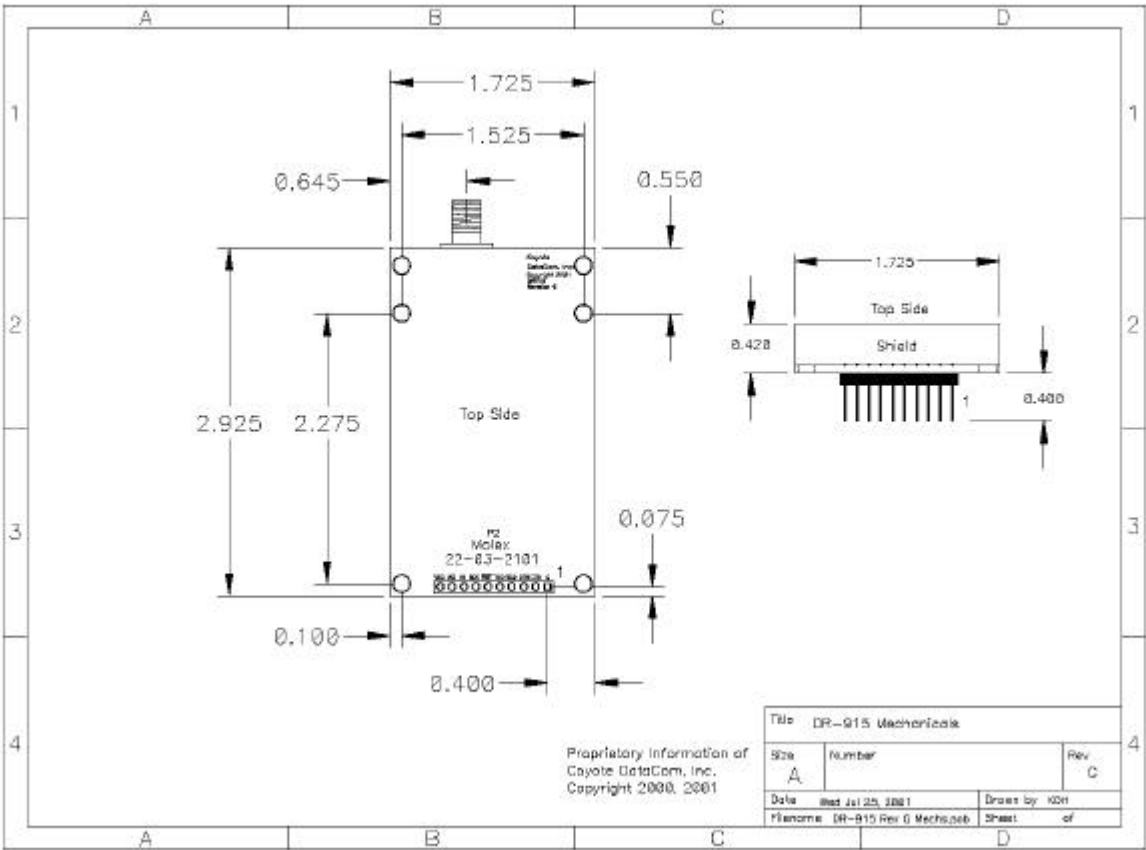
United States.....	15.249 Compliant
Canada.....	RSS210 Compliant

Mechanical

Size.....	1.75" x 2.5"
Antenna Connector	Reverse SMA

DR-915 Data Radio
RADIO HARDWARE INTERFACE

DR-915 Mechanical Overview



DR-915 Data Radio

RADIO HARDWARE INTERFACE

Pin Definitions for Connector P2

PIN	FUNCTION
1	Ground
2	CTS
3	DTR
4	Receive Data
5	Transmit Data
6	Reset
7	SPI Clock
8	SPI MISO
9	SPI MOSI
10	VCC

PIN 1 – Ground

Power and signal ground for the data radio.

PIN 2 – CTS

Clear to Send. This line will be low when the radio is ready to accept data to transmit. When the radio raises this line, the user application must cease sending data to the radio or a buffer overflow may occur resulting in a loss of data.

PIN 3 – DTR

Data Terminal Ready. This line is used to place the radio into configuration mode. It should be held low for normal operation.

PIN 4 – Receive Data

This is data received by the radio and sent out to the user device. The data format is a standard, asynchronous stream at the user set baud rate with one start bit (low) followed by 8 data bits and one stop bit (high). This is a TTL-level

interface. Applications requiring RS-232 must use an appropriate interface circuit or a DR-915 RS-232 interface board.

PIN 5 – Transmit Data

This is the data sent by the user device for the radio to transmit. The data format is a standard, asynchronous stream at the user set baud rate with one start bit (low) followed by 8 data bits and at least one stop bit (high). This is a TTL-level interface. Applications requiring RS-232 must use an appropriate interface circuit or a DR-915 RS-232 interface board.

PIN 6 – Reset

Taking this pin low will reset the radio's micro controller. For normal operation, this pin should be left open.

PIN 7 – SPI Clock

This is the SPI clock signal. Data is clocked into and out of the DR-915 on the rising edge. This pin is also used for updating the code in the radio.

PIN 8 – SPI MISO

This is the SPI data from the radio to the host. This pin is also used for updating the code in the radio.

PIN 9 – SPI MOSI

This is the SPI data to the radio from the host. This pin is also used for updating the code in the radio.

PIN 10 – VCC

This is power to the radio. It should be 7.5 to 15 vdc.

DR-915 Data Radio

APPROVED ANTENNAS

The DR-915 may only be used with one of the following antennas without obtaining further approvals.

- Antennex model AX-FG9026 omni directional base station antenna
- Antennex model AX-B8956C collinear mobile antenna
- Cushcraft model CCPC906N Yagi antenna

DR-915 DATA RADIO IN-SYSTEM CONFIGURATION

The DR-915 may be reconfigured while in a host system. This allows the users system to change the source or destination address and group codes on-the-fly, adding great versatility to the Ack-Back delivery mode.

General Structure

The general structure of the protocol for programming the DR915L/LT radios is as follows:

[0xAA] [command] [checksum] [0x55]

***where** command consists of byte #1, byte #2, byte #3, ..., byte #n as defined below, and*

***where** the checksum is an 8-bit checksum (a simple unsigned 8-bit addition of bytes) of data bytes 1 thru n, 0x55, and*

***where** the checksum does not include the beginning 0xAA, itself, or the ending 0x55.*

Numbers preceded by "0x" are hexadecimal. All others are decimal.

The DTR pin must be raised prior to sending any commands to the radio. Once a complete command has been sent to the radio, the DTR pin should be immediately lowered. If a read command of some sort was issued, the device should be ready to receive the information immediately. If a Write Command was issued, the device must allow 250 milliseconds for the radio to reboot itself with the new values before any other commands can be issued.

As bytes are sent to the radio, each byte will be immediately echoed back to the sender for confirmation that the radio received the byte.

When any data is being read from the radio, the device should simply read in the data without echoing the bytes back to the radio.

Command Structure

The format of the data bytes for sending a command to the radios is as follows:

Read command:

- 0x01 (1 byte)
- beginning address (high byte) (1 byte)
- beginning address (low byte) (1 byte)
- number of bytes to be read (1 byte)

Write Command:

- 0x02 (1 byte)
- beginning address (1 byte)
- number of bytes to be written (1 byte)
- byte #1 to be written
- byte #2 to be written
- byte #3 to be written
- byte #n to be written

Path Management:

- 0x03 (1 byte)
 - mode (1 byte) (0 = off, 1 = every 250ms & on sync, 2 = on sync)
- This command returns a series of packets 6 bytes long. The packet structure is as follows:
- 0xAA (1 byte)
 - counter (high byte) (1 byte)
 - counter (low byte) (1 byte)
 - source group (1 byte)
 - source address (1 byte)
 - 0x55 (1 byte)

Read Model Command:

- 0x04 (1 byte)
- This command returns an ASCII string 15 bytes long.

Read Software Version Command:

- 0x05 (1 byte)

This command returns an ASCII string 15 bytes long.

Addresses of Settings

CAUTION! *The radio software performs no validation of settings. Great care should be taken when programming any of these settings.*

DR915L Address Map:

0x0001 = Channel (Valid range = 0 - 63)

0x0002 = Tx Holdoff (Valid range = 5 - 255. Default = 5.)

0x0003 = Preamble Bytes (Valid range = 15 - 255. Default = 15. A value of less than 15 will cause improper operation.)

0x0004 = Destination Group (Valid range = 0 - 255 where 0 is broadcast group)

0x0005 = Destination Address (Valid range = 0 - 255 where 0 is broadcast address)

0x0006 = Source Group (Valid range = 1 - 255. A value of 0 must not be used.)

0x0007 = Source Address (Valid range = 1 - 255. A value of 0 must not be used.)

0x0008 = Packet Length (Valid range = 1 - 180. Default = 180.)

0x0009 = CTS Deassert Limit (Valid range = 1 - 180. Default = 180. This value should be greater than the CTS Assert Limit.)

0x000A = CTS Assert Limit (Valid range = 1 - 180. Default = 150. This value should be less than the CTS Deassert Limit.)

0x000B = Baud Rate (*see below for proper settings)

0x000C = AckBack™ Enable (Valid range = 1 is enabled, 0 is disabled.)

0x000D = AckBack™ Retries (Valid Range = 0 - 255.)

0x000E = AckBack™ Timeout (Valid Range = 50 - 255.)

0x000F = Communications Port (Valid range = 0 is SPI port, 1 is UART)

0x0010 = Number of Repeaters in System (Valid range = 0 - 255.)

0x0100 = ESN byte #1 (least significant byte)

0x0200 = ESN byte #2

0x0300 = ESN byte #3

0x0400 = ESN byte #4 (most significant byte)

DR915RPT Address Map:

0x0001 = Channel (Valid range = 0 - 63)

0x0002 = Preamble Bytes (Valid range = 15 - 255. Default = 15. A value of less than 15 will cause improper operation.)

0x0003 = Group 1 (Valid range = 0 - 255)

0x0004 = Group 2 (Valid range = 0 - 255)

0x0005 = Baud Rate (*see below for proper settings)

0x0006 = Debug Enable (Valid range = 1 is enabled, 0 is disabled.)

0x0100 = ESN byte #1 (least significant byte)

0x0200 = ESN byte #2

0x0300 = ESN byte #3

0x0400 = ESN byte #4 (most significant byte)

DR915LT Address Map:

0x0001 = Channel (Valid range = 0 - 63)

0x0002 = Tx Holdoff (Valid range = 5 - 255. Default = 5.)

0x0003 = Preamble Bytes (Valid range = 15 - 255. Default = 15. A value of less than 15 will cause improper operation.)

0x0004 = Destination Group (Valid range = 0 - 255 where 0 is broadcast group)

0x0005 = Destination Address (Valid range = 0 - 255 where 0 is broadcast address)

0x0006 = Source Group (Valid range = 1 - 255. A value of 0 must not be used.)

0x0007 = Source Address (Valid range = 1 - 255. A value of 0 must not be used.)

0x0008 = Packet Length (Valid range = 1 - 180. Default = 180.)

0x0009 = CTS Deassert Limit (Valid range = 1 - 180. Default = 180. This value should be greater than the CTS Assert Limit.)

0x000A = CTS Assert Limit (Valid range = 1 - 180. Default = 150. This value should be less than the CTS Deassert Limit.)

0x000B = Baud Rate (*see below for proper settings)

0x000C = Communications Port (Valid range = 0 is SPI port, 1 is UART)

0x000D = Number of Repeaters in System (Valid range = 0 - 255.)

0x0100 = ESN byte #1 (least significant byte)

0x0200 = ESN byte #2

0x0300 = ESN byte #3

0x0400 = ESN byte #4 (most significant byte)

***Baud Rate settings for the DR915L and Repeater are as follows:**

2400 baud = 215
4800 baud = 107
9600 baud = 53 (default)
14400 baud = 35
19200 baud = 26
28800 baud = 17
38400 baud = 12 (not recommended for use)
57600 baud = 8

***Baud Rate settings for the DR915LT are as follows:**

2400 baud = 207
4800 baud = 103
9600 baud = 51 (default)
14400 baud = 34
19200 baud = 25
28800 baud = 16
38400 baud = 12
57600 baud = 8 (not recommended for use)

DR-915 DATA RADIO REGULATORY

FCC Compliance Warning

Changes or modifications to the DR-915 not expressly approved by Coyote DataCom, Inc. could void the user's authority to operate this product.

Note: This equipment has been tested and found to comply with the limits for a Class B digital device, pursuant to part 15 of the FCC Rules. These limits are designed to provide reasonable protection against harmful interference in a residential installation. This equipment generates and can radiate radio frequency energy and, if not installed and used in accordance with the instructions, may cause harmful interference to radio communications. However, there is no guarantee that interference will not occur in a particular installation. If this equipment does cause harmful interference to radio or television reception, which can be determined by turning the equipment off and on, the user is encouraged to try to correct the interference by one or more of the following measures:

- Reorient or relocate the receiving antenna.
- Increase the separation between the equipment and receiver.
- Connect the equipment into an outlet on a circuit different from that to which the receiver is connected.
- Consult the dealer or an experienced radio/TV technician for help.