
FCC Part 90 Test Report

Report No.: AGC02X130201F2

FCC ID : PH3DJ-100
IC : 3070C-DJ100
PRODUCT DESIGNATION : VHF FM HANDHELD TRANSCEIVER
BRAND NAME : ALINCO
MODEL NAME : DJ-100
CLIENT : Alinco Incorporated, Electronics Division
DATE OF ISSUE : Apr.11, 2013
STANDARD(S) : FCC Part 90 Rules
RSS-119 Rules
REPORT VERSION : V 1.0

Attestation of Global Compliance (Shenzhen) Co., Ltd.



CAUTION: This report shall not be reproduced except in full without the written permission of the test laboratory and shall not be quoted out of context.

Report Revise Record

Report Version	Revise Time	Issued Date	Valid Version	Notes
V1.0	/	Apr.11, 2013	Valid	Original Report

VERIFICATION OF COMPLIANCE

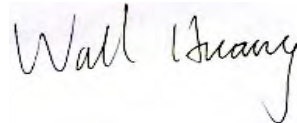
Applicant:	Alinco Incorporated, Electronics Division
	Yodoyabashi Dai-Bldg 13F, 4-4-9 Koraibashi, Chuo-Ku, Osaka 541-0043, Japan
Manufacturer:	Alinco Incorporated, Electronics Division
	Yodoyabashi Dai-Bldg 13F, 4-4-9 Koraibashi, Chuo-Ku, Osaka 541-0043, Japan
Product Designation:	VHF FM HANDHELD TRANSCEIVER
Brand Name:	ALINCO
Model Name:	DJ-100
Hardware Version:	V1.00
Software Version:	V1.00
Report No.:	AGC02X130201F2
Date of Test:	Apr.07, 2013 to Apr.10, 2013

WE HEREBY CERTIFY THAT:

The above equipment was tested by Attestation of Global Compliance (Shenzhen) Co., Ltd. The data evaluation, test procedures, and equipment configurations shown in this report were made in accordance with the procedures given in ANSI C 63.4:2003. The sample tested as described in this report is in compliance with the FCC Rules Part 90 requirements

The test results of this report relate only to the tested sample identified in this report.

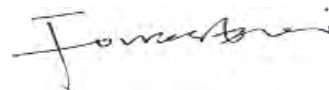
Tested by



Wall Huang

Apr.11, 2013

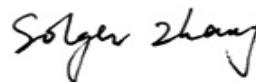
Checked By



Forrest Lei

Apr.11, 2013

Authorized By



Solger Zhang

Apr.11, 2013

TABLE OF CONTENTS

1. GENERAL INFORMATION.....	6
1.1 PRODUCT DESCRIPTION	6
1.3 TEST METHODOLOGY	7
1.4 TEST FACILITY	7
1.5 SPECIAL ACCESSORIES	7
1.6 EQUIPMENT MODIFICATIONS	7
2. SYSTEM TEST CONFIGURATION	8
2.1 EUT CONFIGURATION	8
2.2 EUT EXERCISE	8
2.3 GENERAL TECHNICAL REQUIREMENTS.....	8
2.4 CONFIGURATION OF TESTED SYSTEM.....	9
3. SUMMARY OF TEST RESULTS	10
4. DESCRIPTION OF TEST MODES.....	11
5. CONDUCTED LIMITS.....	12
5.1 PROVISIONS APPLICABLE.....	12
5.2 MEASUREMENT PROCEDURE	12
5.3 TEST SETUP BLOCK DIAGRAM	13
5.4 TEST EQUIPMENT USED.....	13
5.5 TEST RESULT	14
6. FREQUENCY TOLERANCE.....	16
6.1 PROVISIONS APPLICABLE	16
6.2 MEASUREMENT PROCEDURE	16
6.3 TEST SETUP BLOCK DIAGRAM	17
6.4 TEST EQUIPMENT USED:.....	17
6.5 TEST RESULT	18
7. EMISSION BANDWIDTH.....	21
7.1 PROVISIONS APPLICABLE	21
7.2 MEASUREMENT PROCEDURE	21
7.3 TEST SETUP BLOCK DIAGRAM	21
7.4 MEASUREMENT EQUIPMENT USED:.....	21
7.5 MEASUREMENT RESULT:.....	22
8. UNWANTED RADIATION	23
8.1 PROVISIONS APPLICABLE	23
8.2 MEASUREMENT PROCEDURE	23

8.3 TEST SETUP BLOCK DIAGRAM	24
8.4 MEASUREMENT EQUIPMENT USED:	26
8.5 MEASUREMENT RESULTS:	26
8.6 EMISSION MASK PLOT	28
9. MODULATION CHARACTERISTICS	29
9.1 PROVISIONS APPLICABLE	29
9.2 MEASUREMENT METHOD	29
9.3 MEASUREMENT INSTRUMENTS	29
9.4 MEASUREMENT RESULT	30
10. MAXIMUM TRANSMITTER POWER (CONDUCTED OUTPUT POWER)	33
10.1 PROVISIONS APPLICABLE	33
10.2 TEST PROCEDURE	33
10.3 TEST INSTRUMENTS	33
10.4 TEST CONFIGURATION	33
10.5 TEST RESULT	33
10.6 CONDUCT SPURIOUS PLOT	34
11. TRANSMITTER FREQUENCY BEHAVIOR	35
11.1 PROVISIONS APPLICABLE	35
11.2 TEST METHOD	35
11.3 TEST INSTRUMENTS	35
11.4 DESCRIBE LIMIT LINE OF TRANSMITTER FREQUENCY BEHAVIOR	36
11.5 MEASURE RESULT	38
12. RADIATED EMISSION ON RECEIVING MODE	40
12.1 PROVISIONS APPLICABLE	40
12.2 TEST METHOD	40
12.3 TEST INSTRUMENTS	40
12.4 MEASURE RESULT (MEASURED AT 3M USING FCC PART15 B LIMITS)	41
13. AUDIO LOW PASS FILTER RESPONSE	43
13.1 LIMITS	43
13.2. METHOD OF MEASUREMENTS	43
13.3 TEST DATA	44
APPENDIX I	46
PHOTOGRAPHS OF SETUP	46
APPENDIX II	47
EXTERNAL VIEW OF EUT	47

1. GENERAL INFORMATION

1.1 PRODUCT DESCRIPTION

The EUT is a VHF FM MOBILE TRANSCEIVER designed for voice communication. It is designed by way of utilizing the FM modulation achieves the system operating.

A major technical description of EUT is described as following:

Communication Type	Voice / Tone only
Modulation	FM
Emission Type	F3E
Emission Bandwidth	10.77KHz
Peak Frequency Deviation	1.86KHz
Audio Frequency Response	10.88dB
Maximum Transmitter Power	36.95dBm
Output power Modification	5W (It was fixed by the manufacturer, any individual can't arbitrarily change it)
Antenna Designation	Detachable
Power Supply	DC 7.4V, 1500mAh (by battery)
Adapter parameter:	Input: 100-240V, 50/60Hz, 0.3A Output: 12V, 0.5A
Car Adapter parameter:	Input: 12~15V Output: 7.9V, 1.5A
Limiting Voltage	DC 6.29V
Operation Frequency Range and Channel	Frequency Range: 136.000MHz to 173.995MHz Channel Separation: 12.5KHz
	Top Channel: 173.995MHz Centre Channel: 155.000MHz Bottom Channel: 136.000MHz
Frequency Tolerance	0.507ppm

1.2 RELATED SUBMITTAL(S) / GRANT (S)

This submittal(s) (test report) is intended for **FCC ID: PH3DJ-100 and IC: 3070C-DJ100**, filing to comply with the FCC Part 90 requirements and the RS-119 requirements.

1.3 TEST METHODOLOGY

The radiated emission testing was performed according to the procedures of ANSI C 63.4: 2009; TIA/EIA 603 and FCC CFR 47 Rules of 2.1046, 2.1047, 2.1049, 2.1051, 2.1053, 2.1055, 2.1057.

1.4 TEST FACILITY

The test site used to collect the radiated data is located on the address of Attestation of Global Compliance (Shenzhen) Co., Ltd. 2/F., Building 2, No.1-No.4, Chaxi Sanwei Technical Industrial Park, Gushu, Xixiang, Bao'an District, Shenzhen, Guangdong, China. The test site is constructed and calibrated to meet the FCC requirements in documents ANSI C63.4: 2003 and IC requirements in documents RS212.

FCC register No.: 259865

1.5 SPECIAL ACCESSORIES

Not available for this EUT intended for grant.

1.6 EQUIPMENT MODIFICATIONS

Not available for this EUT intended for grant.

2. SYSTEM TEST CONFIGURATION

2.1 EUT CONFIGURATION

The EUT configuration for testing is installed on RF field strength measurement to meet the Commission's requirement and operating in a manner which intends to maximize its emission characteristics in a continuous normal application.

2.2 EUT EXERCISE

The Transmitter was operated in the normal operating mode. The TX frequency was fixed which was for the purpose of the measurements.

2.3 GENERAL TECHNICAL REQUIREMENTS

For FCC Part 90 requirements:

- (1). Section 15.207: Conducted Limits
- (2). Section 90.205: Maximum ERP is dependent upon the station's antenna HAAT and required service area
- (3). Section 90.207: Modulation Characteristic
- (4). Section 90.209: Occupied Bandwidth
- (5). Section 90.210: Emission Mask
- (6). Section 90.213: Frequency Tolerance
- (7). Section 90.214: Transient Frequency Behavior
- (8). Section 15.109: Radiated Emission

For RS-119 requirements:

- (1). Section RSS-Gen: Conducted Limits
- (2). Section 119.5.4: Maximum ERP is dependent upon the station's antenna HAAT and required service area
- (3). Section 119. 5.13: Modulation Characteristic
- (4). Section 119. 5.5: Occupied Bandwidth
- (5). Section 119. 5.8: Emission Mask
- (6). Section 119. 5.3: Frequency Tolerance
- (7). Section 119. 5.9: Transient Frequency Behavior
- (8). Section RSS-Gen: Radiated Emission

2.4 CONFIGURATION OF TESTED SYSTEM

Fig. 2-1 Configuration of Tested System



Table 2-1 Equipment Used in Tested System

Item	Equipment	Model No.	Identifier	Note
1	VHF FM HANDHELD TRANSCIVER	DJ-100	FCC ID: PH3DJ-100 IC: 3070C-DJ100	EUT
2	POWER ADAPTER	EDC-189	Input: 100-240V, 50/60Hz, 0.3A Output: 12V, 0.5A	Accessory
3	CAR POWER ADAPTER	N/A	Input: 12~15V Output: 7.9V, 1.5A	Accessory
4	DESKTOP RAPID CHARGER	N/A	Input: 12~15V, 450mA Output: 500mA	Accessory
5	BATTERY	EBP-87	7.4V, 1500mAh	Accessory

3. SUMMARY OF TEST RESULTS

FCC Rules	RS-119	Description Of Test	Result
§15.207	RS-Gen	Conducted Emission	Compliant
§90.205	§5.4	Maximum Transmitter Power	Compliant
§90.207	§5.13	Modulation Characteristic	Compliant
§90.209	§5.5	Occupied Bandwidth	Compliant
§90.210	§5.8	Emission Mask	Compliant
§90.213	§5.3	Frequency Tolerance	Compliant
§90.214	§5.9	Transient Frequency Behavior	Compliant
§15.109	RS-Gen	Radiated Emission	Compliant

4. DESCRIPTION OF TEST MODES

RF TEST MODES

The EUT (VHF FM HANDHELD TRANSCEIVER) has been tested under normal operating condition. (The top channel, the middle channel and the bottom channel) are chosen for testing at each channel separation.

No.	TEST MODES	CHANNEL SEPARATION
1	Low Channel	12.5 KHz
2	Middle Channel	12.5 KHz
3	High Channel	12.5 KHz

EMC TEST MODES

No.	TEST MODES
1	Standby Mode + (Charging)

Note: Only the result of the worst case was recorded in the report.

5. CONDUCTED LIMITS

5.1 PROVISIONS APPLICABLE

For an intentional radiator that is designed to be connected to the public utility (AC) power line, the, the radio frequency voltage that is conducted back onto the AC power line on any frequencies within the band 150 KHz to 30 MHz shall not exceed the limits in the following table, as measured using a 50uH/50 ohms line impedance stabilization network (LISN). Compliance with the provisions of this paragraph shall be based on the measurement of the radio frequency voltage between each power line and ground at the power terminal. The lower limit applies at the boundary between the frequencies ranges.

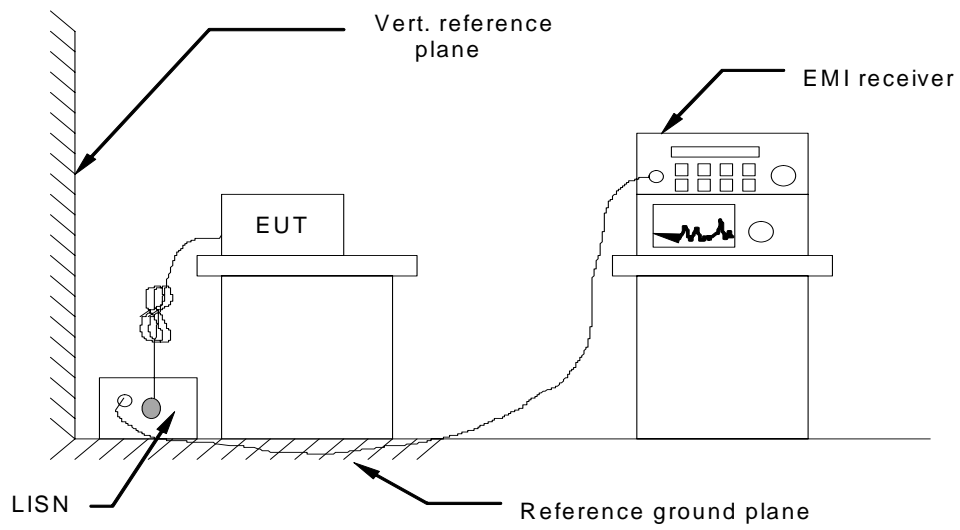
Frequency of Emission (MHz)	Conducted Limit(dBuV)	
	Quasi-Peak	Average
0.15 – 0.5	66 to 56 *	56 to 46 *
0.5 – 5	56	46
5 – 30	60	50

* Decreases with the logarithm of the frequency.

5.2 MEASUREMENT PROCEDURE

- (1) The equipment was set up as per the test configuration to simulate typical actual usage per the user's manual. When the EUT is a tabletop system, a wooden table with a height of 0.8 meters is used and is placed on the ground plane as per ANSI C63.4 (see Test Facility for the dimensions of the ground plane used). When the EUT is a floor-standing equipment, it is placed on the ground plane which has a 3-12 mm non-conductive covering to insulate the EUT from the ground plane.
- (2) Support equipment, if needed, was placed as per ANSI C63.4.
- (3) All I/O cables were positioned to simulate typical actual usage as per ANSI C63.4.
- (4) The EUT received power through a Line Impedance Stabilization Network (LISN) which supplied power source and was grounded to the ground plane.
- (5) All support equipments received AC power from a second LISN, if any.
- (6) The EUT test program was started. Emissions were measured on each current carrying line of the EUT using a spectrum Analyzer / Receiver connected to the LISN powering the EUT. The LISN has two monitoring points: Line 1 (Hot Side) and Line 2 (Neutral Side). Two scans were taken: one with Line 1 connected to Analyzer / Receiver and Line 2 connected to a 50 ohm load; the second scan had Line 1 connected to a 50 ohm load and Line 2 connected to the Analyzer / Receiver.
- (7) Analyzer / Receiver scanned from 150 KHz to 30MHz for emissions in each of the test modes.
During the above scans, the emissions were maximized by cable manipulation.

5.3 TEST SETUP BLOCK DIAGRAM

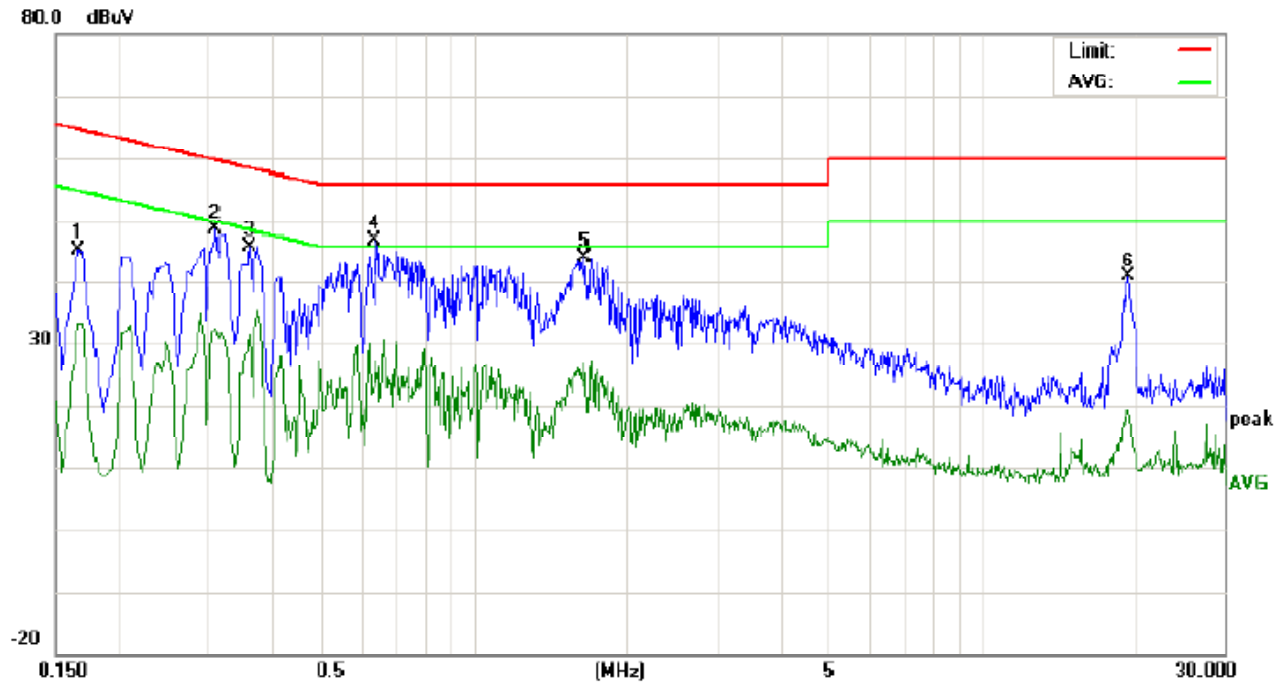


5.4 TEST EQUIPMENT USED

Conducted Emission Test Site					
Name of Equipment	Manufacturer	Model	Serial Number	Cal. Date	Cal. Due
TEST RECEIVER	R&S	ESCI	N/A	07/18/2012	07/17/2013
LISN	R&S	ESH3-Z5	N/A	07/18/2012	07/17/2013

5.5 TEST RESULT

LINE CONDUCTED EMISSION TEST LINE 1-L



Site: Conduction

Phase: **L1**

Temperature: 26

Limit: FCC Class B Conduction(QP)

Power:

Humidity: 60 %

EUT: VHF FM HANDHELD TRANSCEIVER

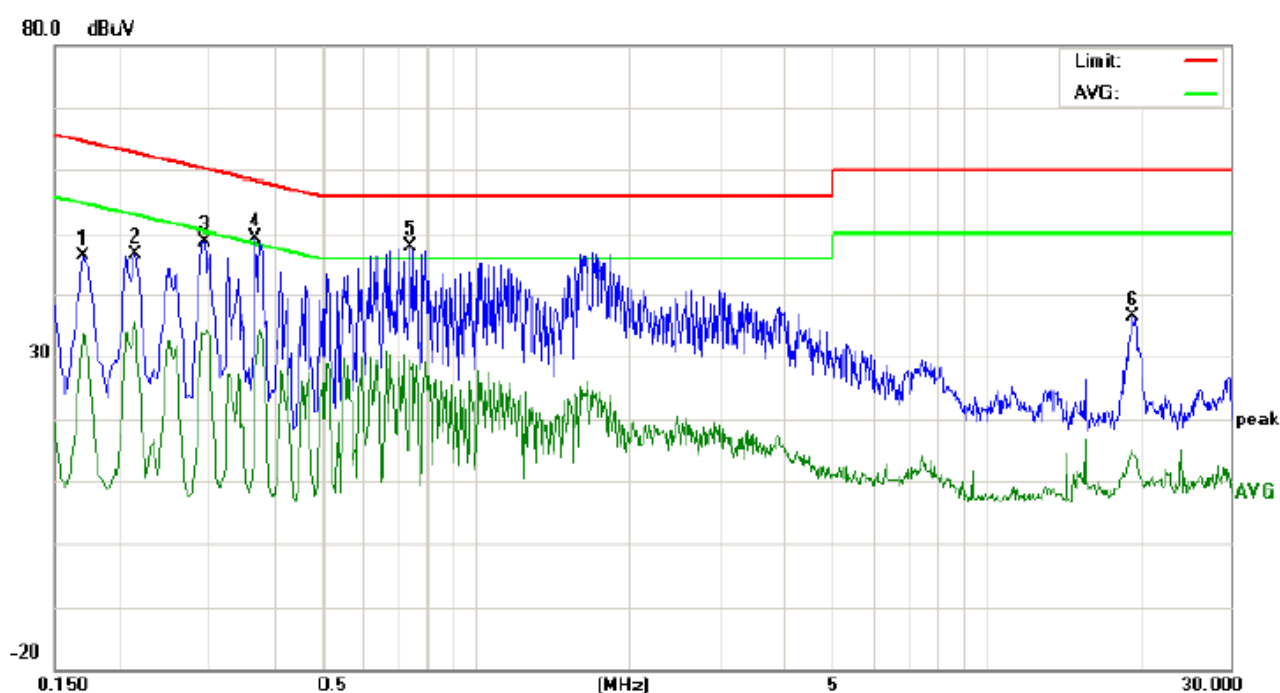
M/N: DJ-100

Mode: Mode 1

Note:

No.	Freq. (MHz)	Reading_Level (dBuV)			Correct Factor	Measurement (dBuV)			Limit (dBuV)		Margin (dB)		P/F	Comment
		Peak	QP	AVG		Peak	QP	AVG	QP	AVG	QP	AVG		
1	0.1660	35.17		22.89	10.18	45.35		33.07	65.15	55.15	-19.80	-22.08	P	
2	0.3100	38.21		22.07	10.29	48.50		32.36	59.97	49.97	-11.47	-17.61	P	
3	0.3620	35.66		21.11	10.31	45.97		31.42	58.68	48.68	-12.71	-17.26	P	
4	0.6380	36.48		16.99	10.33	46.81		27.32	56.00	46.00	-9.19	-18.68	P	
5	1.6620	33.83		16.90	10.33	44.16		27.23	56.00	46.00	-11.84	-18.77	P	
6	19.5140	30.77		8.98	10.11	40.88		19.09	60.00	50.00	-19.12	-30.91	P	

LINE CONDUCTED EMISSION TEST LINE 2-N



Site: Conduction Phase: **N** Temperature: 26
Limit: FCC Class B Conduction(QP) Power: Humidity: 60 %
EUT: VHF FM HANDHELD TRANSCEIVER
M/N: DJ-100
Mode: Mode 1
Note:

No.	Freq. (MHz)	Reading_Level (dBuV)			Correct Factor dB	Measurement (dBuV)			Limit (dBuV)		Margin (dB)		P/F	Comment
		Peak	QP	AVG		Peak	QP	AVG	QP	AVG	QP	AVG		
1	0.1700	36.08		23.24	10.18	46.26		33.42	64.96	54.96	-18.70	-21.54	P	
2	0.2140	36.46		25.03	10.23	46.69		35.26	63.04	53.04	-16.35	-17.78	P	
3	0.2940	38.44		23.03	10.29	48.73		33.32	60.41	50.41	-11.68	-17.09	P	
4	0.3700	38.70		17.86	10.32	49.02		28.18	58.50	48.50	-9.48	-20.32	P	
5	0.7460	37.53		19.14	10.32	47.85		29.46	56.00	46.00	-8.15	-16.54	P	
6	19.3700	26.31		4.76	10.12	36.43		14.88	60.00	50.00	-23.57	-35.12	P	

6. FREQUENCY TOLERANCE

6.1 PROVISIONS APPLICABLE

- a). According to FCC Part 2 Section 2.1055(a)(1), the frequency stability shall be measured with variation of ambient temperature from -30°C to $+50^{\circ}\text{C}$ centigrade.
- b). According to FCC Part 2 Section 2.1055(d)(2), for battery powered equipment, the frequency stability shall be measured with reducing primary supply voltage to the battery operating end point, which is specified by the manufacturer.
- c). According to FCC Part 90 Section 90.213, the frequency tolerance must be maintained within 0.00025% for 12.5 KHz channel separation and 0.0001% for 6.25 KHz channel separation.
- d). According to RSS-119 Section 119.5.3, the frequency tolerance must be maintained within 0.00025% for 12.5 KHz channel separation and 0.0005% for 25KHz channel separation.

6.2 MEASUREMENT PROCEDURE

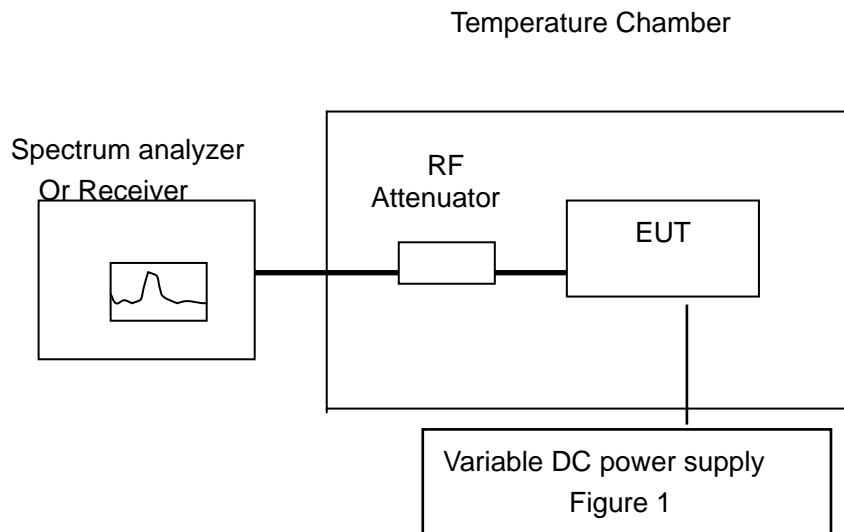
6.2.1 Frequency stability versus environmental temperature

1. Setup the configuration per figure 1 for frequencies measurement inside an environment chamber, Install new battery in the EUT.
2. Turn on EUT and set SA center frequency to the EUT radiated frequency. Set SA Resolution Bandwidth to 1KHz and Video Resolution Bandwidth to 1KHz and Frequency Span to 50KHz. Record this frequency as reference frequency.
3. Set the temperature of chamber to 50°C . Allow sufficient time (approximately 30 min) for the temperature of the chamber to stabilize. While maintaining a constant temperature inside the chamber, turn the EUT on and measure the EUT operating frequency.
4. Repeat step 2 with a 10°C decreased per stage until the lowest temperature -30°C is measured, record all measured frequencies on each temperature step.

6.2.2 Frequency stability versus input voltage

1. Setup the configuration per figure 1 for frequencies measured at temperature if it is within 15°C to 25°C . Otherwise, an environment chamber set for a temperature of 20°C shall be used. The EUT shall be powered by DC 13.8V
2. Set SA center frequency to the EUT radiated frequency. Set SA Resolution Bandwidth to 1 KHz and Video Resolution Bandwidth to 1KHz. Record this frequency as reference frequency.
3. Supply the EUT primary voltage at the operating end point which is specified by manufacturer and record the frequency.

6.3 TEST SETUP BLOCK DIAGRAM



6.4 TEST EQUIPMENT USED:

NAME OF EQUIPMENT	MANUFACTURER	MODEL	SERIAL NUMBER	Cal. Date	Cal. Due
Receiver	R&S	ESCI	N/A	07/18/2012	07/17/2013
Climate Chamber	EXPERY	TN-400	N/A	07/18/2012	07/17/2013

6.5 TEST RESULT

(1) Frequency stability versus input voltage (Supply nominal voltage is 7.40V)

Bottom Channel @ 12.5 KHz Channel Separation

Reference Frequency:	136.000 MHz	Limit:	2.5ppm
Environment Temperature	Power Supply	Frequency Deviation	
(°C)	(V)	(MHz)	ppm
50	DC 7.40 V	136.000065	0.478
40	DC 7.40 V	136.000054	0.397
30	DC 7.40 V	136.000048	0.353
20	DC 7.40 V	136.000025	0.184
10	DC 7.40 V	136.000036	0.265
0	DC 7.40 V	136.000041	0.301
-10	DC 7.40 V	136.000058	0.426
-20	DC 7.40 V	136.000062	0.456
-30	DC 7.40 V	136.000071	0.522

Middle Channel @ 12.5 KHz Channel Separation

Reference Frequency:	155.000 MHz	Limit:	2.5ppm
Environment Temperature	Power Supply	Frequency Deviation	
(°C)	(V)	(MHz)	ppm
50	DC 7.40 V	155.000065	0.419
40	DC 7.40 V	155.000053	0.342
30	DC 7.40 V	155.000041	0.265
20	DC 7.40 V	155.000028	0.181
10	DC 7.40 V	155.000035	0.226
0	DC 7.40 V	155.000041	0.265
-10	DC 7.40 V	155.000052	0.335
-20	DC 7.40 V	155.000059	0.381
-30	DC 7.40 V	155.000066	0.426

Top Channel @ 12.5 KHz Channel Separation

Reference Frequency:	173.995 MHz	Limit:	2.5ppm
Environment Temperature	Power Supply	Frequency Deviation	
(°C)	(V)	(MHz)	ppm
50	DC 7.40 V	173.995077	0.443
40	DC 7.40 V	173.995063	0.362
30	DC 7.40 V	173.995056	0.322
20	DC 7.40 V	173.995023	0.132
10	DC 7.40 V	173.995036	0.207
0	DC 7.40 V	173.995044	0.253
-10	DC 7.40 V	173.995052	0.299
-20	DC 7.40 V	173.995062	0.356
-30	DC 7.40 V	173.995069	0.397

(2) Frequency stability versus input voltage (Battery limiting voltage is 6.29V)

Bottom Channel @ 12.5 KHz Channel Separation

Reference Frequency:	136.000 MHz	Limit:	2.5ppm
Environment Temperature	Power Supply	Frequency Deviation	
(°C)	(V)	(MHz)	ppm
50	DC 6.29 V	136.000069	0.507
40	DC 6.29 V	136.000052	0.382
30	DC 6.29 V	136.000041	0.301
20	DC 6.29 V	136.000025	0.184
10	DC 6.29 V	136.000031	0.228
0	DC 6.29 V	136.000046	0.338
-10	DC 6.29 V	136.000051	0.375
-20	DC 6.29 V	136.000059	0.434
-30	DC 6.29 V	136.000063	0.463

Middle Channel @ 12.5 KHz Channel Separation

Reference Frequency:	155.000 MHz	Limit:	2.5ppm
Environment Temperature	Power Supply	Frequency Deviation	
(°C)	(V)	(MHz)	ppm
50	DC 6.29 V	155.000063	0.406
40	DC 6.29 V	155.000053	0.342
30	DC 6.29 V	155.000044	0.284
20	DC 6.29 V	155.000029	0.187
10	DC 6.29 V	155.000032	0.206
0	DC 6.29 V	155.000047	0.303
-10	DC 6.29 V	155.000051	0.329
-20	DC 6.29 V	155.000056	0.361
-30	DC 6.29 V	155.000066	0.426

Top Channel @ 12.5 KHz Channel Separation

Reference Frequency:	173.995 MHz	Limit:	2.5ppm
Environment Temperature	Power Supply	Frequency Deviation	
(°C)	(V)	(MHz)	ppm
50	DC 6.29 V	173.995057	0.328
40	DC 6.29 V	173.995045	0.259
30	DC 6.29 V	173.995036	0.207
20	DC 6.29 V	173.995024	0.138
10	DC 6.29 V	173.995032	0.184
0	DC 6.29 V	173.995049	0.282
-10	DC 6.29 V	173.995054	0.310
-20	DC 6.29 V	173.995063	0.362
-30	DC 6.29 V	173.995071	0.408

(3) Frequency stability versus input voltage (Battery Fully Charged voltage is 8.51V)

Bottom Channel @ 12.5 KHz Channel Separation

Reference Frequency:	136.000 MHz	Limit:	2.5ppm
Environment Temperature	Power Supply	Frequency Deviation	
(°C)	(V)	(MHz)	ppm
50	DC 8.51 V	136.000059	0.434
40	DC 8.51 V	136.000048	0.353
30	DC 8.51 V	136.000036	0.265
20	DC 8.51 V	136.000025	0.184
10	DC 8.51 V	136.000033	0.243
0	DC 8.51 V	136.000048	0.353
-10	DC 8.51 V	136.000052	0.382
-20	DC 8.51 V	136.000062	0.456
-30	DC 8.51 V	136.000069	0.507

Middle Channel @ 12.5 KHz Channel Separation

Reference Frequency:	155.000 MHz	Limit:	2.5ppm
Environment Temperature	Power Supply	Frequency Deviation	
(°C)	(V)	(MHz)	ppm
50	DC 8.51 V	155.000049	0.316
40	DC 8.51 V	155.000041	0.265
30	DC 8.51 V	155.000036	0.232
20	DC 8.51 V	155.000021	0.135
10	DC 8.51 V	155.000037	0.239
0	DC 8.51 V	155.000042	0.271
-10	DC 8.51 V	155.000055	0.355
-20	DC 8.51 V	155.000063	0.406
-30	DC 8.51 V	155.000071	0.458

Top Channel @ 12.5 KHz Channel Separation

Reference Frequency:	173.995MHz	Limit:	2.5ppm
Environment Temperature	Power Supply	Frequency Deviation	
(°C)	(V)	(MHz)	ppm
50	DC 8.51 V	173.995066	0.379
40	DC 8.51 V	173.995051	0.293
30	DC 8.51 V	173.995038	0.218
20	DC 8.51 V	173.995027	0.155
10	DC 8.51 V	173.995037	0.213
0	DC 8.51 V	173.995044	0.253
-10	DC 8.51 V	173.995053	0.305
-20	DC 8.51 V	173.995068	0.391
-30	DC 8.51 V	173.995077	0.443

7. EMISSION BANDWIDTH

7.1 PROVISIONS APPLICABLE

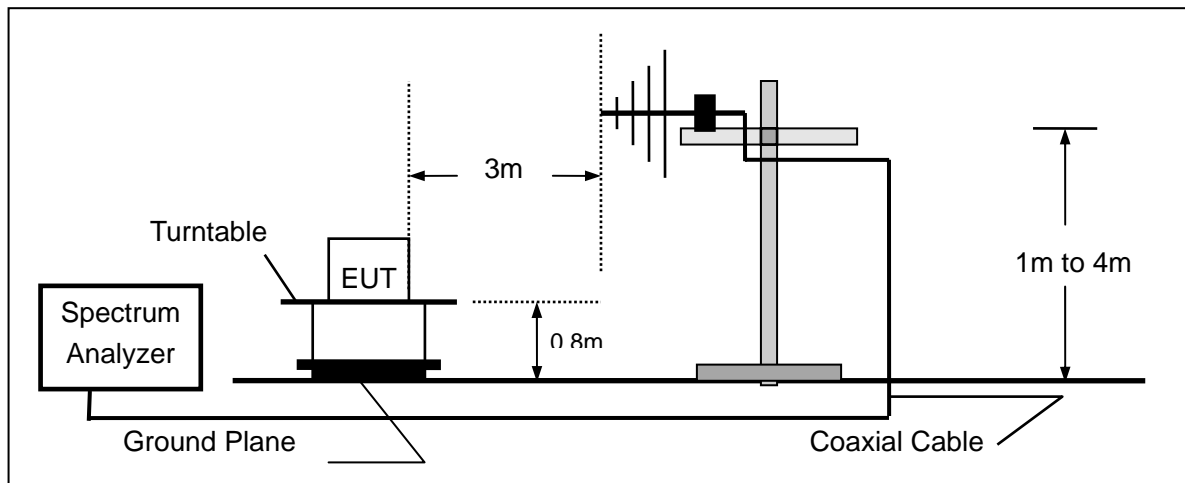
According to FCC Part 90 Section 90.209: The authorized bandwidth shall be 11.25 KHz for 12.5 KHz channel separation and 6 KHz for 6.25 KHz channel separation.

According to RSS-119 Section 119.5.5: The authorized bandwidth shall be 11.25 KHz for 12.5 KHz

7.2 MEASUREMENT PROCEDURE

- 1). The EUT was placed on a turn table which is 0.8m above ground plane.
- 2). The EUT was modulated by 2.5 KHz Sine wave audio signal, The level of the audio signal employed is 16 dB greater than that necessary to produce 50% of rated system deviation. Rated system deviation is 2.5 kHz (12.5 kHz channel spacing).
- 3). Set SPA Center Frequency = fundamental frequency, RBW=VBW= 300 Hz, Span =50 KHz.
- 4). Set SPA Max hold. Mark peak, -26 dB.

7.3 TEST SETUP BLOCK DIAGRAM



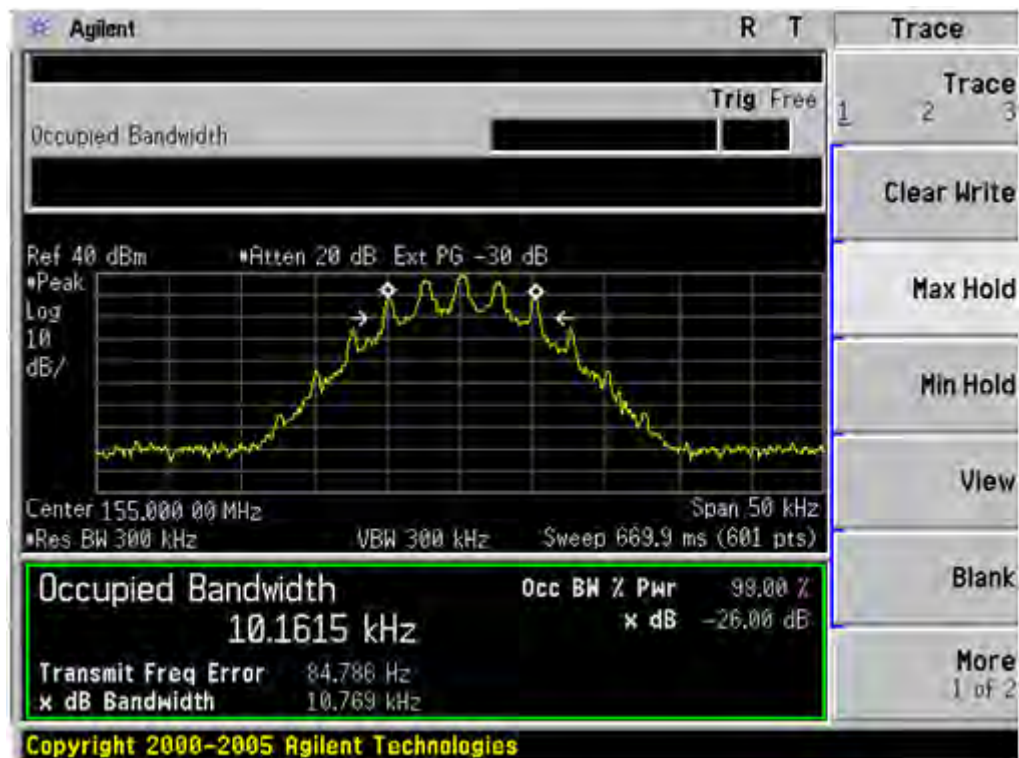
7.4 MEASUREMENT EQUIPMENT USED:

NAME OF EQUIPMENT	MANUFACTURER	MODEL	SERIAL NUMBER	Cal. Date	Cal. Due
SPECTRUM ANALYZER	AGILENT	E4440A	US44300399	07/18/2012	07/17/2013
MODULATION ANALYZER	HP	8920B	3104A03367	07/18/2012	07/17/2013
BROADBAND ANT.	A.H.	SAS-521-4	A0304224	06/08/2012	06/07/2013

7.5 MEASUREMENT RESULT:

26 dB Bandwidth Measurement Result			
Operating Frequency	12.5 KHz Channel Separation		
	Test Data	Limits	Result
136.000MHz	10.74 KHz	11.25 KHz	Pass
155.000MHz	10.77 KHz	11.25 KHz	Pass
173.995MHz	10.73 KHz	11.25 KHz	Pass

Occupied bandwidth of Middle Channel (Maximum) @ 12.5 KHz Channel Separation



8. UNWANTED RADIATION

8.1 PROVISIONS APPLICABLE

8.1.1 According to Section 90.210, the power of each unwanted emission shall be less than Transmitted Power as specified below for transmitters designed to operate with each channel separation.

According to RSS-119 Section 119.5.8, the power of each unwanted emission shall be less than Transmitted Power as specified below for transmitters with each channel separation.

For 12.5 KHz Channel Separation:

- (1). On any frequency removed from the center of the authorized bandwidth f_0 to 5.625 KHz removed from f_0 : Zero dB.
- (2). On any frequency removed from the center of the authorized bandwidth by a displacement Frequency (f_d in KHz) f_0 of more than 5.625 KHz but no more than 12.5 KHz: At least $7.27(f_d - 2.88 \text{ KHz})$ dB
- (3). On any frequency removed from the center of the authorized bandwidth by a displacement Frequency (f_d in KHz) f_0 of more than 12.5 KHz: At least $50 + 10 \log(P)$ dB or 70 dB, whichever is lesser attenuation.

For 6.25 KHz Channel Separation:

- (1). On any frequency from the center of the authorized bandwidth f_0 to 3.0 kHz removed from f_0 : Zero dB.
- (2). On any frequency removed from the center of the authorized bandwidth by a displacement frequency (f_d in kHz) of more than 3.0 kHz but no more than 4.6 kHz: At least $30 + 16.67(f_d - 3 \text{ kHz})$ or $55 + 10 \log(P)$ or 65 dB, whichever is the lesser attenuation.
- (3). On any frequency removed from the center of the authorized bandwidth by more than 4.6 kHz: At least $55 + 10 \log(P)$ or 65 dB, whichever is the lesser attenuation.

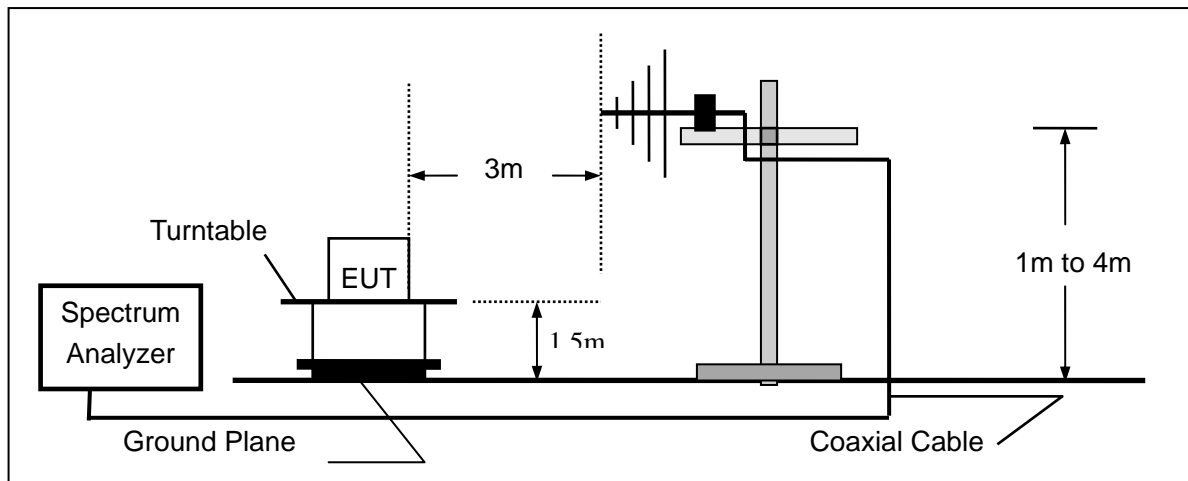
8.2 MEASUREMENT PROCEDURE

- (1) On a test site, the EUT shall be placed on a turntable, and in the position closest to the normal use as declared by the user.
- (2) The test antenna shall be oriented initially for vertical polarization located 3m from the EUT to correspond to the transmitter.
- (3) The output of the antenna shall be connected to the measuring receiver and either a peak or quasi-peak detector was used for the measurement as indicated on the report. The detector selection is based on how close the emission level was approaching the limit.
- (4) The transmitter shall be switched on; if possible, without the modulation and the measurement receiver shall be tuned to the frequency of the transmitter under test.
- (5) The test antenna shall be raised and lowered through the specified range of height until the measuring receiver detects a maximum signal level.
- (6) The transmitter shall then be rotated through 360° in the horizontal plane, until the maximum signal level is detected by the measuring receiver.
- (7) The test antenna shall be raised and lowered again through the specified range of height until the

measuring receiver detects a maximum signal level.

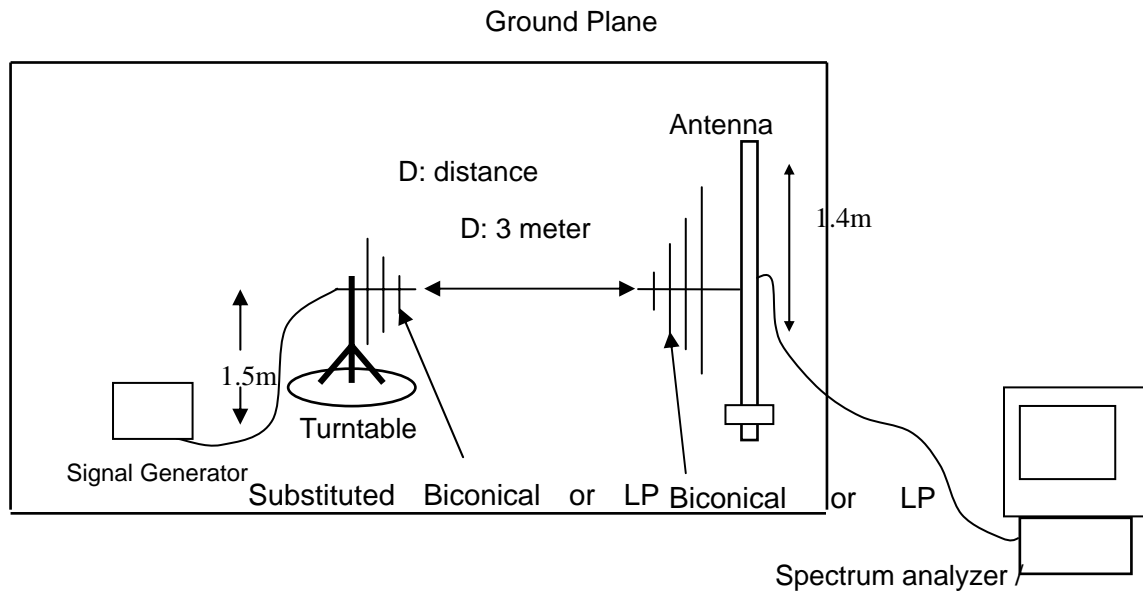
- (8) The maximum signal level detected by the measuring receiver shall be noted.
- (9) The measurement shall be repeated with the test antenna set to horizontal polarization.
- (10) Replace the antenna with a proper Antenna (substitution antenna).
- (11) The substitution antenna shall be oriented for vertical polarization and, if necessary, the length of the substitution antenna shall be adjusted to correspond to the frequency of transmitting.
- (12) The substitution antenna shall be connected to a calibrated signal generator.
- (13) If necessary, the input attenuator setting of the measuring receiver shall be adjusted in order to increase the sensitivity of the measuring receiver.
- (14) The test antenna shall be raised and lowered through the specified range of the height to ensure that the maximum signal is received.
- (15) The input signal to substitution antenna shall be adjusted to the level that produces a level detected by the measuring receiver, that is equal to the level noted while the transmitter radiated power was measured, corrected for the change of input attenuation setting of the measuring receiver.
- (16) The input level to the substitution antenna shall be recorded as power level in dBm, corrected for any change of input attenuator setting of the measuring receiver.
- (17) The measurement shall be repeated with the test antenna and the substitution antenna oriented for horizontal polarization.

8.3 TEST SETUP BLOCK DIAGRAM

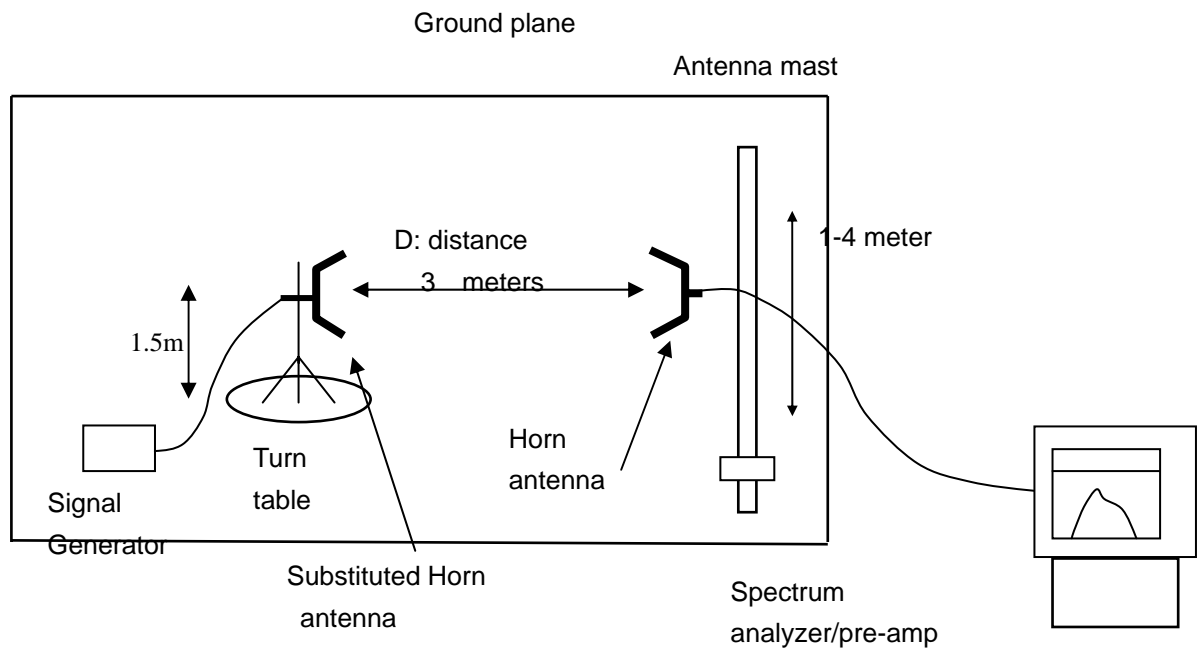


SUBSTITUTION METHOD: (Radiated Emissions)

Radiated Below 1GHz



Radiated Above 1 GHz



8.4 MEASUREMENT EQUIPMENT USED:

NAME OF EQUIPMENT	MANUFACTURER	MODEL	SERIAL NUMBER	Cal. Date	Cal. Due
SPECTRUM ANALYZER	AGILENT	E4440A	US44300399	07/18/2012	07/17/2013
HORN ANT.	EM	EM-AH-10180	100150	04/21/2012	04/20/2013
BROADBAND ANT.	A.H.	SAS-521-4	A0304224	06/08/2012	06/07/2013
AMPLIFIER	EM	EM30180	0607030	07/18/2012	07/17/2013
POSITIONING CONTROLLER	MF	MF-7802	MF780208147	--	--

8.5 MEASUREMENT RESULTS:

Measurement Result for 12.5 KHz Channel Separation-5W

On any frequency removed from the center of the authorized bandwidth by a displacement

Frequency (f_d in KHz) of more than 12.5 KHz: At least $50 + 10 \log(P)$ dB or 70 dB, which ever is lesser attenuation.

Limit: At least $50 + 10 \log(P) = 50 + 10 \log(60) = 57$ (dB)

Measurement Result for 12.5 KHz Channel Separation @ 136.000MHz

Emission Frequency (MHz)	Ant. Polarity(H/V)	Measurement Result Below carrier(dBc)	Limit	Result(P/F)
136.000	v	0		pass
272.000	v	98.36(-50.58dBm)	57	pass
408.00	v	100.25(-52.47dBm)	57	pass
544.000	v	104.36	57	pass
680.000	v	105.28	57	pass
816.000	v	106.33	57	pass
952.000	v	107.42	57	pass
1088.000	v	108.24	57	pass
1224.000	v	109.55	57	pass
1360.000	v	111.39	57	pass

Measurement Result for 12.5 KHz Channel Separation @ 155.000MHz

Emission Frequency (MHz)	Ant. Polarity(H/V)	Measurement Result Below carrier(dBc)	Limit	Result(P/F)
155.000	v	0		pass
310.000	v	98.62(-50.85dBm)	57	pass
465.000	v	101.25(-53.47dBm)	57	pass
620.000	v	104.32	57	pass
775.000	v	104.95	57	pass
930.000	v	105.66	57	pass
1085.000	v	107.72	57	pass
1240.000	v	108.88	57	pass
1395.000	v	109.74	57	pass
1550.000	v	111.83	57	pass

Measurement Result for 12.5 KHz Channel Separation @ 173.995MHz

Emission Frequency (MHz)	Ant. Polarity(H/V)	Measurement Result Below carrier(dBc)	Limit	Result(P/F)
173.995	v	0		pass
347.990	v	100.87(-53.09dBm)	57	pass
521.985	v	104.56	57	pass
695.980	v	105.77	57	pass
869.975	v	106.53	57	pass
1043.970	v	107.57	57	pass
1217.965	v	108.49	57	pass
1391.960	v	109.63	57	pass
1565.955	v	111.77	57	pass
1739.950	v	113.52	57	pass

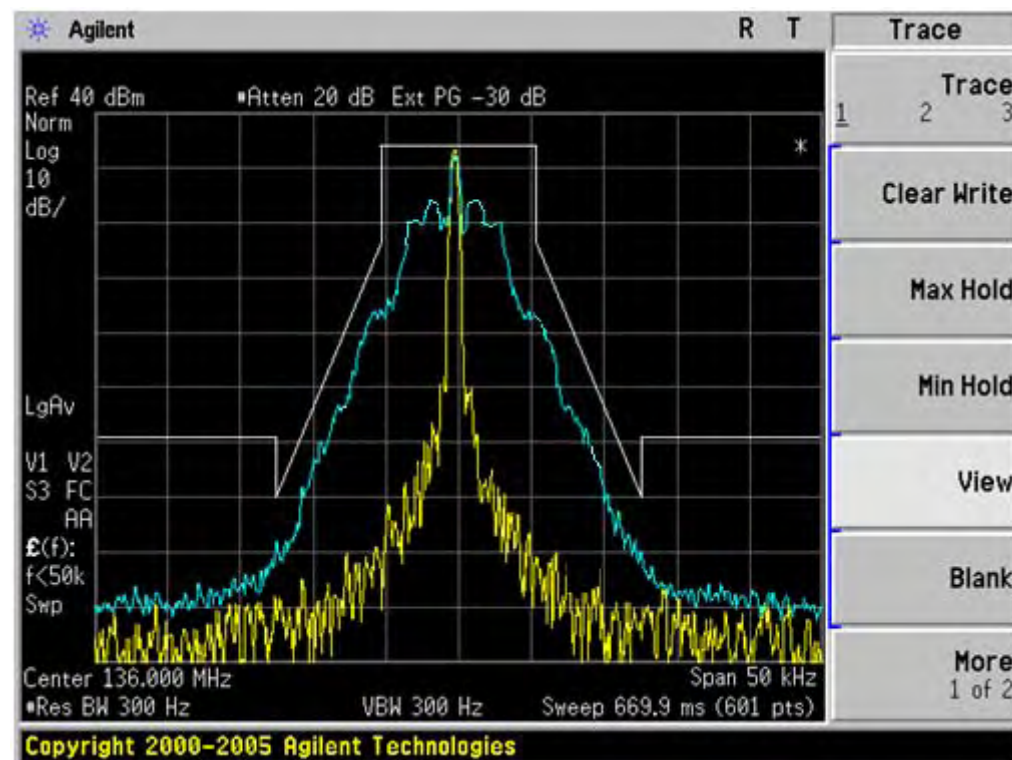
Notes: The emissions were scanned from 30 MHz to 10th harmonics;

8.6 EMISSION MASK PLOT

The detailed procedure employed for Emission Mask measurements are specified as following:

- The transmitter shall be modulated by a 2.5 kHz audio signal,
- The level of the audio signal employed is 16 dB greater than that necessary to produce 50% of rated system deviation. Rated system deviation is 2.5 kHz.

The Worst Emission Mask for 12.5 KHz channel Separation (5W)



9. MODULATION CHARACTERISTICS

9.1 PROVISIONS APPLICABLE

According to CFR 47 section 2.1047(a), for Voice Modulation Communication Equipment, the frequency response of the audio modulation circuit over a range of 100 to 5000Hz shall be measured.

9.2 MEASUREMENT METHOD

9.2.1 Modulation Limit

- (1). Configure the EUT as shown in figure 1, adjust the audio input for 60% of rated system deviation at 1KHz using this level as a reference (0dB) and vary the input level from –20 to +20dB. Record the frequency deviation obtained as a function of the input level.
- (2). Repeat step 1 with input frequency changing to 300, 1000, 1500 and 3000Hz in sequence.

9.2.2 Audio Frequency Response

- (1). Configure the EUT as shown in figure 1.
- (2). Adjust the audio input for 20% of rated system deviation at 1 KHz using this level as a reference (0 dB).
- (3). Vary the Audio frequency from 100 Hz to 10 KHz and record the frequency deviation.
- (4). Audio Frequency Response = $20\log_{10} (\text{Deviation of test frequency}/\text{Deviation of 1 KHz reference})$.

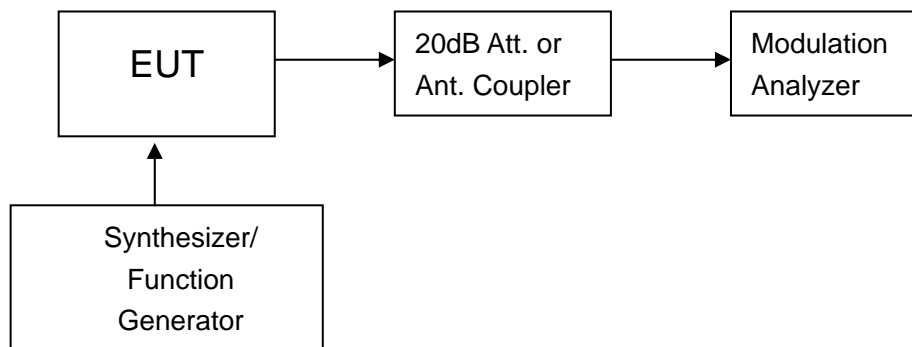


Figure 1: Modulation characteristic measurement configuration

9.3 MEASUREMENT INSTRUMENTS

NAME OF EQUIPMENT	MANUFACTURER	MODEL	SERIAL NUMBER	Cal. Date	Cal. Due
Modulation Analyzer	HP	8920B	3104A03367	07/18/2012	07/17/2013

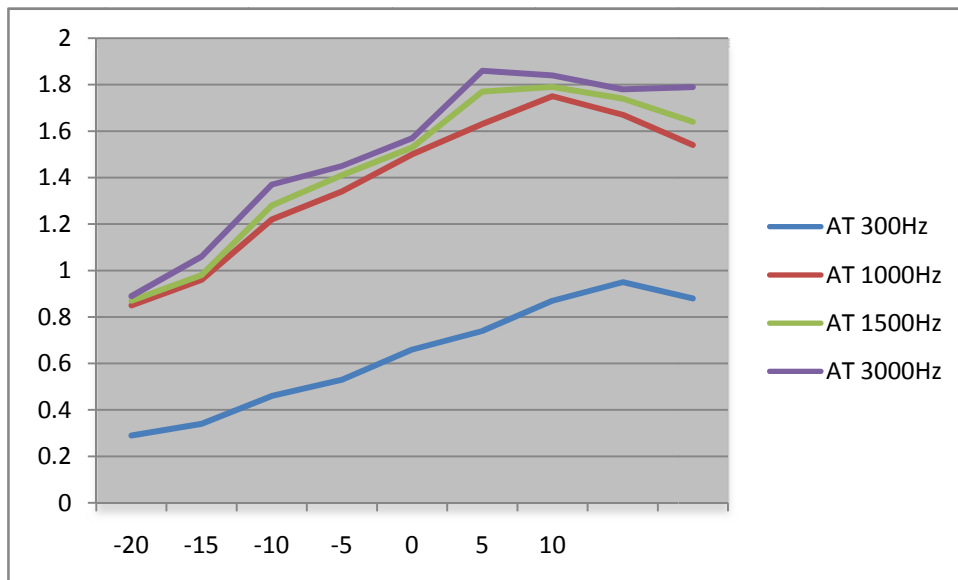
NOTE: 8920B can generate audio modulation frequency.

9.4 MEASUREMENT RESULT

(A). MODULATION LIMIT:

Middle Channel @ 12.5 KHz Channel Separations

Modulation Level (dB)	Peak Freq. Deviation At 300 Hz	Peak Freq. Deviation At 1000 Hz	Peak Freq. Deviation At 1500 Hz	Peak Freq. Deviation At 3000 Hz
-20	0.29	0.85	0.87	0.89
-15	0.34	0.96	0.98	1.06
-10	0.46	1.22	1.28	1.37
-5	0.53	1.34	1.41	1.45
0	0.66	1.50	1.53	1.57
+5	0.74	1.63	1.77	1.86
+10	0.87	1.75	1.79	1.84
+15	0.95	1.67	1.74	1.78
+20	0.88	1.54	1.64	1.79

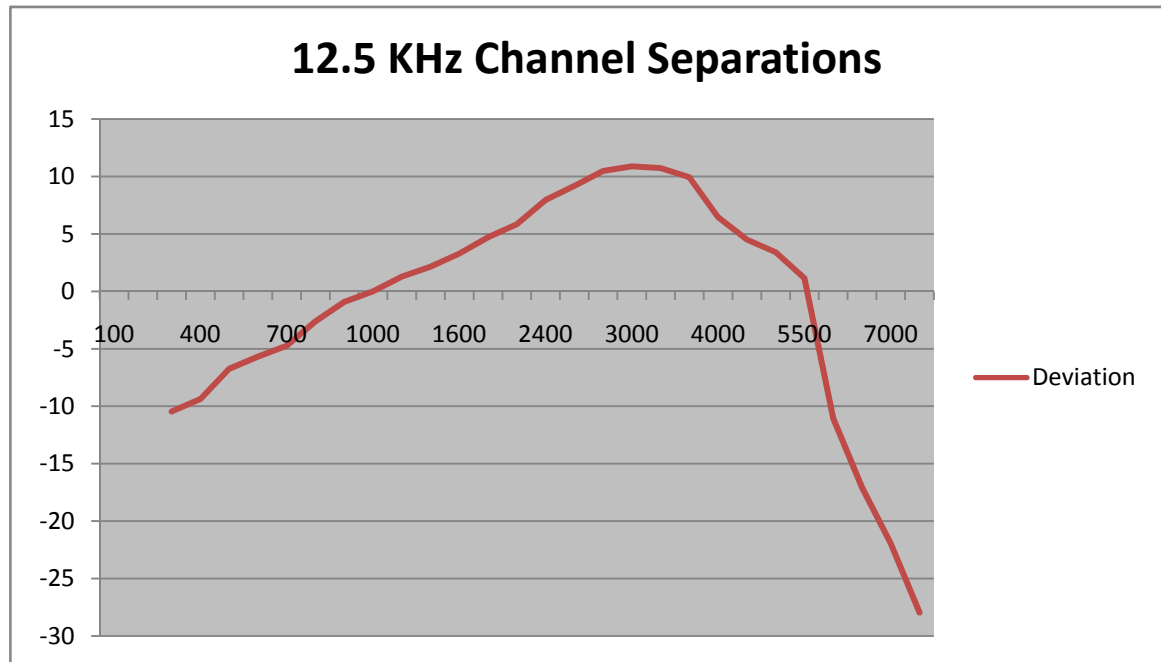


(B). AUDIO FREQUENCY RESPONSE:

Middle Channel @ 12.5 KHz Channel Separations

Frequency (Hz)	Deviation (KHz)	Audio Frequency Response(dB)
100	--	--
200	--	--
300	0.15	-10.46
400	0.17	-9.37
500	0.23	-6.74
600	0.26	-5.68
700	0.29	-4.73
800	0.37	-2.62
900	0.45	-0.92
1000	0.50	0.00
1200	0.58	1.29
1400	0.64	2.14
1600	0.73	3.29
1800	0.86	4.71
2000	0.98	5.85
2400	1.25	7.96
2500	1.44	9.19
2800	1.67	10.47
3000	1.75	10.88
3200	1.72	10.73
3600	1.57	9.94
4000	1.05	6.44
4500	0.84	4.51
5000	0.74	3.41
5500	0.57	1.14
6000	0.14	-11.06
6500	0.07	-17.08
7000	0.04	-21.94
7500	0.02	-27.96
9000	--	--
10000	--	--
14000	--	--
18000	--	--
20000	--	--
30000	--	--

Frequency Response of Middle Channel



10. MAXIMUM TRANSMITTER POWER (CONDUCTED OUTPUT POWER)**10.1 PROVISIONS APPLICABLE**

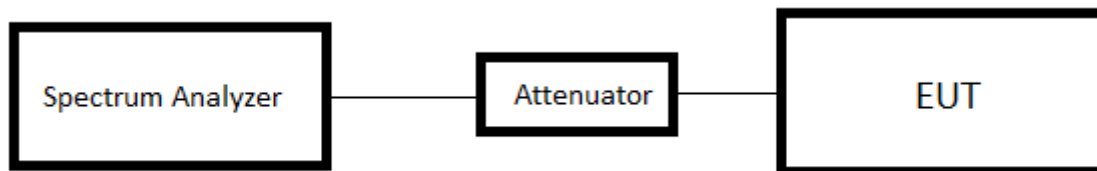
Per FCC §2.1046 and §90.205 AND RSS 119 Part 4.1: Maximum ERP is dependent upon the station's antenna HAAT and required service area.

10.2 TEST PROCEDURE

The RF output of Two-way Radio was conducted to a spectrum analyzer through an appropriate attenuator.

10.3 TEST INSTRUMENTS

NAME OF EQUIPMENT	MANUFACTURER	MODEL	SERIAL NUMBER	Cal. Date	Cal. Due
SPECTRUM ANALYZER	AGILENT	E4440A	US44300399	07/18/2012	07/17/2013

10.4 TEST CONFIGURATION**10.5 TEST RESULT**

The maximum Conducted Power (CP) is
60 W for 12.5 KHz Channel Separation

Calculation Formula: $CP = R + A + L$

* Note:

CP: The final Conducted Power

R : The reading value from spectrum analyzer

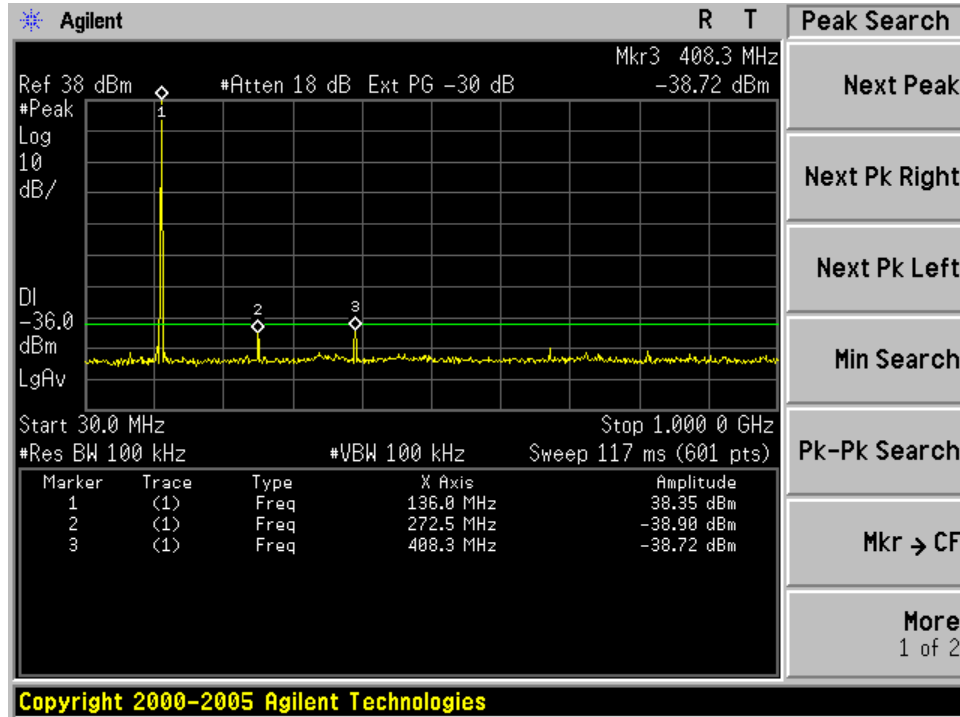
A : The attenuation value of the used attenuator

L : The loss of all connection cables

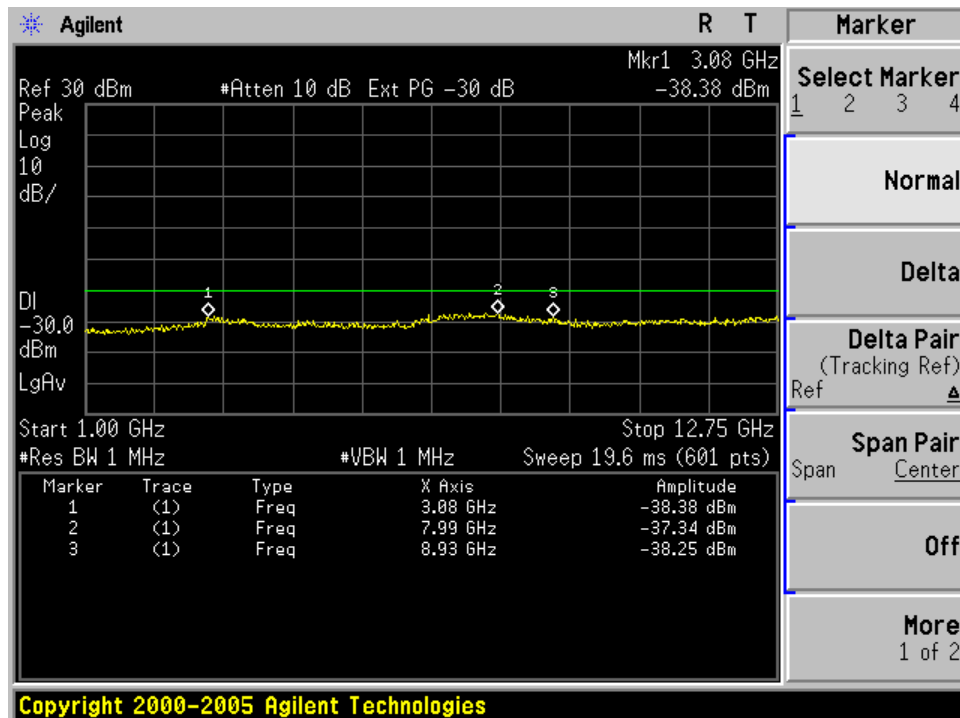
Conducted Power Measurement Results		
Channel Separation	Channel	Measurement Result (dBm)
		For 47.78dBm(5W)
12.5 KHz	Bottom(136.000MHz)	36.95
	Middle(155.000MHz)	36.92
	Top (173.995MHz)	36.89

10.6 CONDUCT SPURIOUS PLOT

Conducted Spurious Emission (worst) @ 136.000MHz With 12.5 KHz Channel Separation 30MHz-1GHz



Conduct Spurious Emission (worst) @ 136.000MHz With 12.5 KHz Channel Separation 1GHz-12.75GHz



11. TRANSMITTER FREQUENCY BEHAVIOR

11.1 PROVISIONS APPLICABLE

Section 90.214

Time intervals ^{1, 2}	Maximum frequency difference ³	All equipment	
		150 to 174 MHz	421 to 512 MHz
Transient Frequency Behavior for Equipment Designed to Operate on 25 kHz Channels			
t ₁ ⁴	± 25.0 kHz	5.0 ms	10.0 ms
t ₂	± 12.5 kHz	20.0 ms	25.0 ms
t ₃ ⁴	± 25.0 kHz	5.0 ms	10.0 ms
Transient Frequency Behavior for Equipment Designed to Operate on 12.5 kHz Channels			
t ₁ ⁴	± 12.5 kHz	5.0 ms	10.0 ms
t ₂	± 6.25 kHz	20.0 ms	25.0 ms
t ₃ ⁴	± 12.5 kHz	5.0 ms	10.0 ms
Transient Frequency Behavior for Equipment Designed to Operate on 6.25 kHz Channels			
t ₁ ⁴	± 6.25 kHz	5.0 ms	10.0 ms
t ₂	± 3.125 kHz	20.0 ms	25.0 ms
t ₃ ⁴	± 6.25 kHz	5.0 ms	10.0 ms

¹ t_{on} is the instant when a 1 kHz test signal is completely suppressed, including any capture time due to phasing.

t_1 is the time period immediately following t_{on} .

t_2 is the time period immediately following t_1 .

t_3 is the time period from the instant when the transmitter is turned off until t_{off} .

t_{off} is the instant when the 1 kHz test signal starts to rise.

² During the time from the end of t_2 to the beginning of t_3 , the frequency difference must not exceed the limits specified in §90.213.

³ Difference between the actual transmitter frequency and the assigned transmitter frequency.

⁴ If the transmitter carrier output power rating is 6 watts or less, the frequency difference during this time period may exceed the maximum frequency difference for this time period.

11.2 TEST METHOD

TIA/EIA-603 2.2.19

11.3 TEST INSTRUMENTS

NAME OF EQUIPMENT	MANUFACTURER	MODEL	SERIAL NUMBER	Cal. Date	Cal. Due
Signal Generator	AGILENT	E4412B	LR114196	05/29/2012	05/28/2013
Storage Oscilloscope	Tektronix	TDS3052	B017447	07/18/2012	07/17/2013

11.4 DESCRIBE LIMIT LINE OF TRANSMITTER FREQUENCY BEHAVIOR

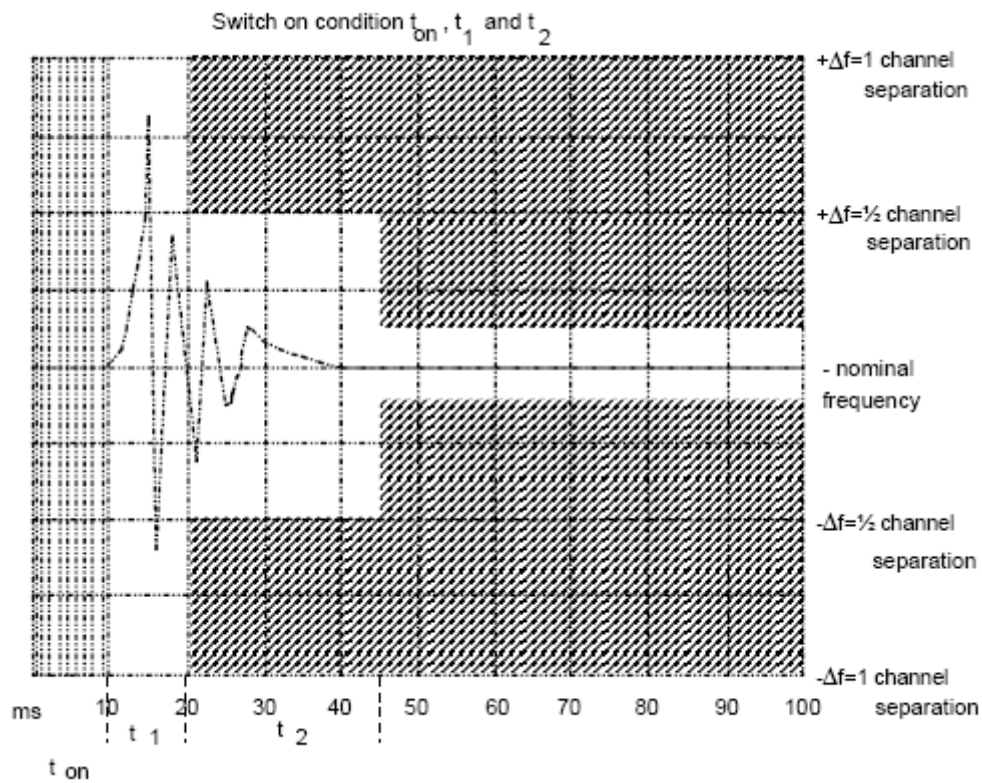
ton: The switch-on instant t_{on} of a transmitter is defined by the condition when the output power, measured at the antenna terminal, exceeds 0,1 % of the full output power (-30 dBc).

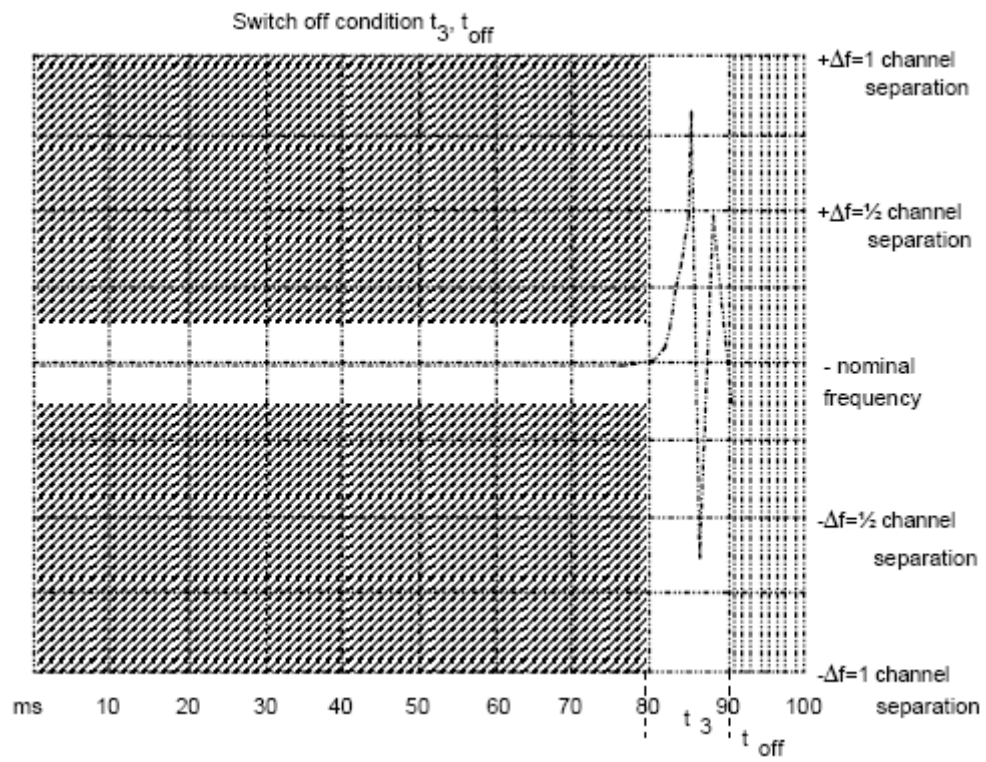
t1: period of time starting at t_{on} and finishing according to above 11.1

t2: period of time starting at the end of t_1 and finishing according to above 11.1

toff: switch-off instant defined by the condition when the output power falls below 0,1 % of the full output power (-30 dBc).

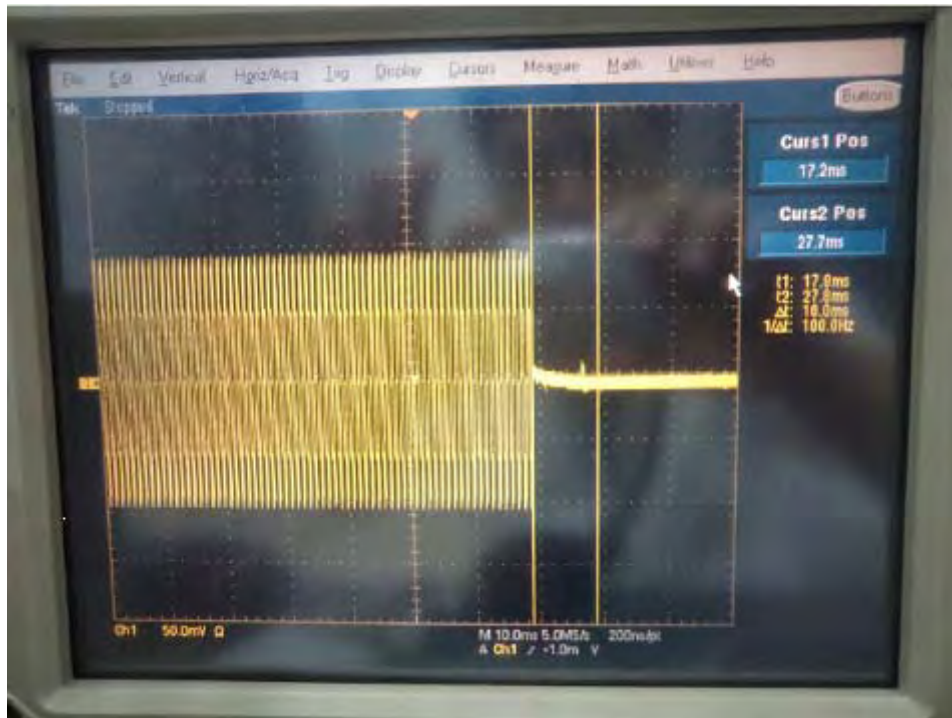
t3: period of time that finishing at t_{off} and starting according to above 11.1



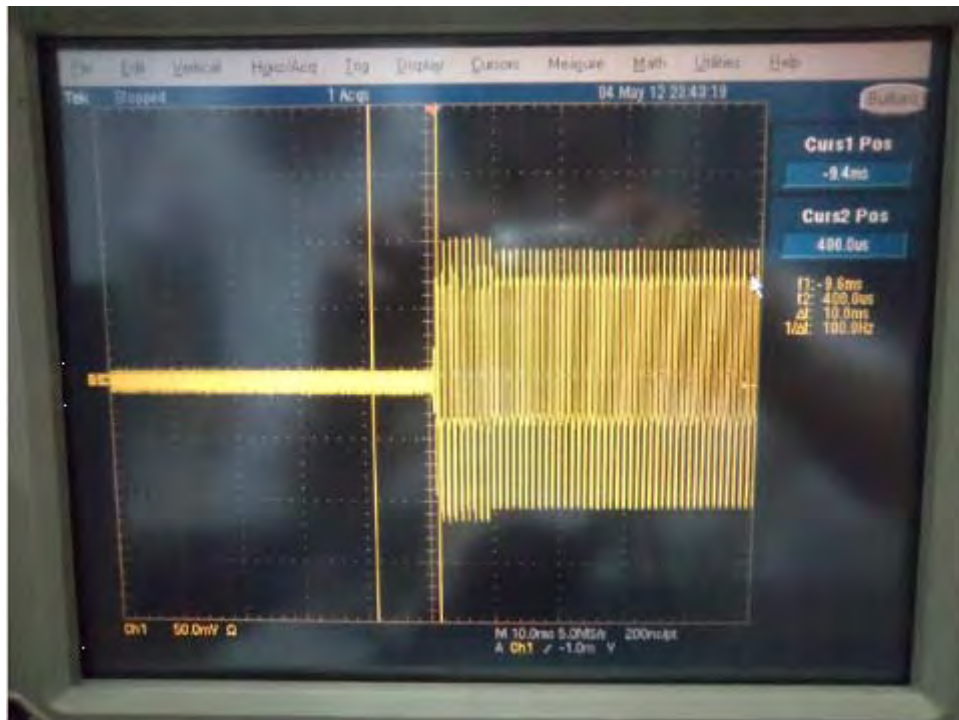


11.5 MEASURE RESULT

Transmitter Frequency Behaviour @ 12.5 KHz Channel Separation--Off to On



Transmitter Frequency Behaviour @ 12.5 KHz Channel Separation--On to Off



12. RADIATED EMISSION ON RECEIVING MODE

12.1 PROVISIONS APPLICABLE

FCC Part 15 Subpart B Section 15.109

RSS-Gen Subpart B Section RSS-Gen.6.1

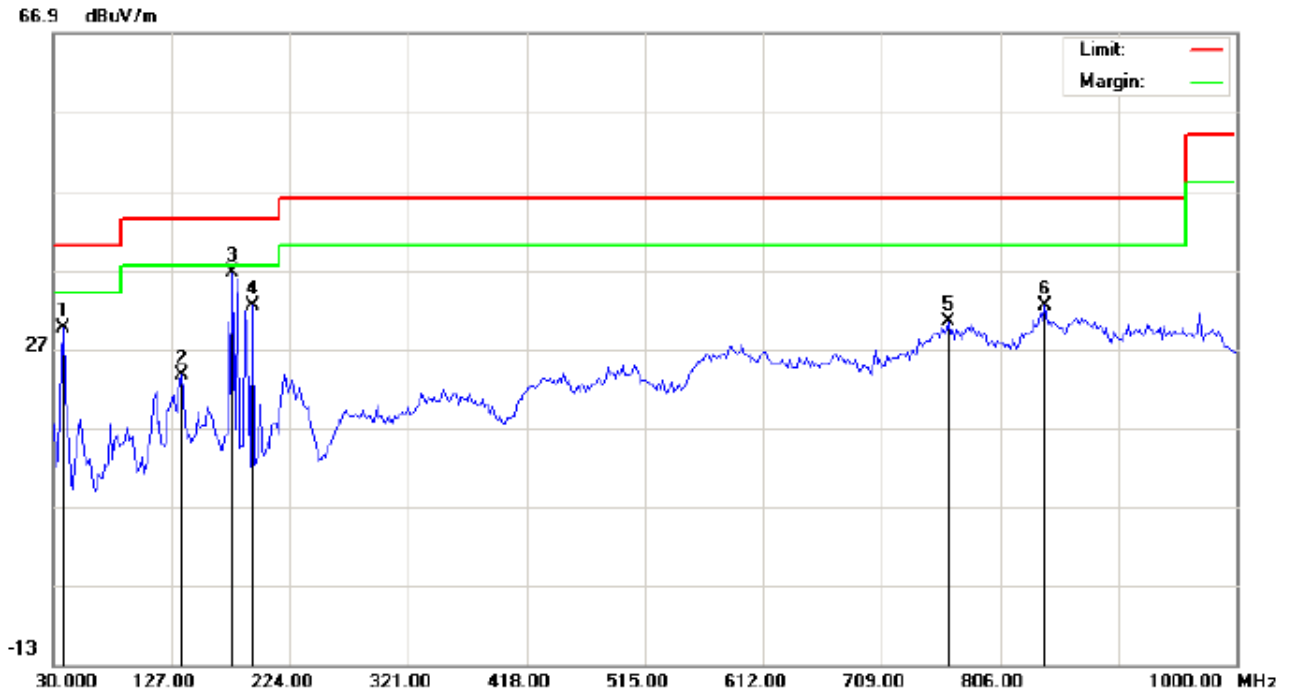
12.2 TEST METHOD

ANSI C 63.4: 2003

12.3 TEST INSTRUMENTS

NAME OF EQUIPMENT	MANUFACTURER	MODEL	SERIAL NUMBER	Cal. Date	Cal. Due
SPECTRUM ANALYZER	AGILENT	E4440A	US44300399	07/18/2012	07/17/2013
HORN ANT.	EM	EM-AH-10180	100150	04/21/2012	04/20/2013
BROADBAND ANT.	A.H.	SAS-521-4	A0304224	06/08/2012	06/07/2013
AMPLIFIER	EM	EM30180	0607030	07/18/2012	07/17/2013
POSITIONING CONTROLLER	MF	MF-7802	MF780208147	--	--

12.4 MEASURE RESULT (MEASURED AT 3M USING FCC PART15 B LIMITS) RADIATED EMISSION TEST RESULTS – HORIZONTAL



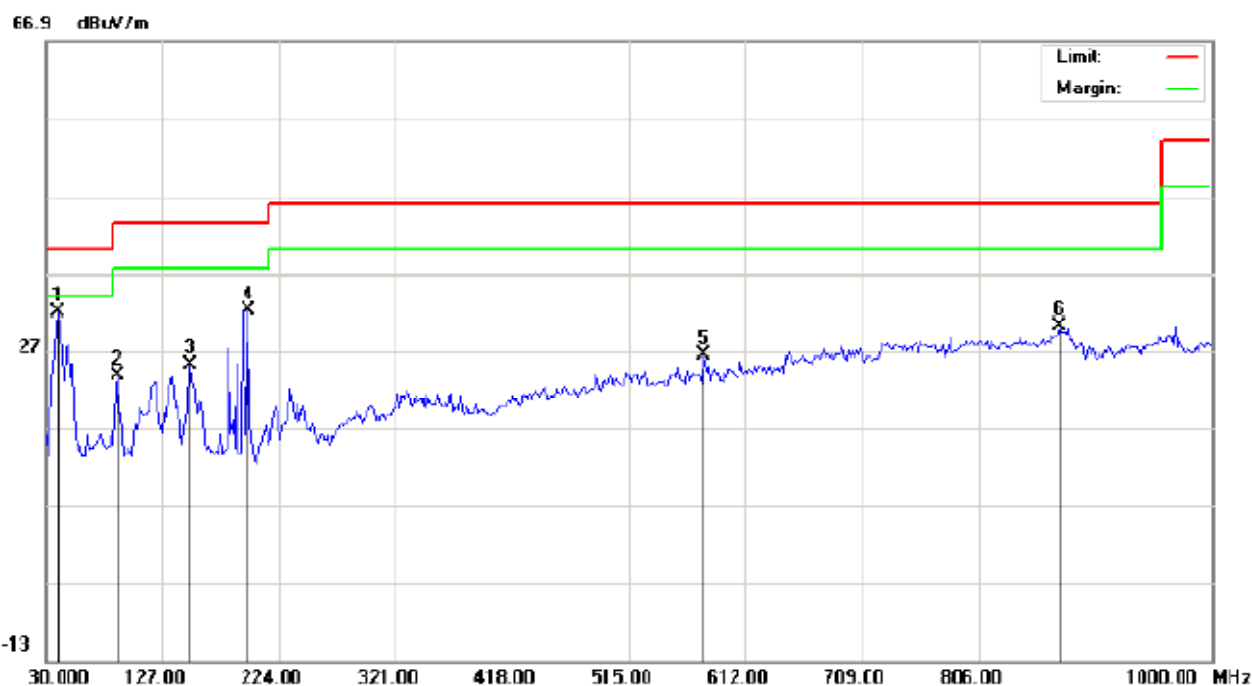
Site: site #1
Limit: FCC Class B 3M Radiation
EUT: VHF FM HANDHELD TRANSCEIVER
M/N: DJ-100
Mode: Mode 1
Note:

Polarization: *Horizontal*
Power:
Distance: 3m

Temperature: 26
Humidity: 60 %

No.	Mk	Freq.	Reading	Factor	Measurement	Limit	Over	Detector	Antenna Height	Table Degree	Comment
		MHz	dBuV	dB/m	dBuV/m	dBuV/m	dB		cm	degree	
1		38.0833	20.28	9.37	29.65	40.00	-10.35	peak			
2		135.0833	10.22	13.43	23.65	43.50	-19.85	peak			
3	*	177.1167	24.80	11.82	36.62	43.50	-6.88	peak			
4		193.2833	24.77	7.67	32.44	43.50	-11.06	peak			
5		763.9666	2.74	27.67	30.41	46.00	-15.59	peak			
6		843.1833	1.40	30.99	32.39	46.00	-13.61	peak			

RADIATED EMISSION TEST RESULTS – VERTICAL



Site: site #1

Polarization: *Vertical*

Temperature: 26

Limit: FCC Class B 3M Radiation

Power:

Humidity: 60 %

EUT: VHF FM HANDHELD TRANSCEIVER

Distance 3m

M/N: DJ-100

Mode: Mode 1

Note:

No.	Mk	Freq.	Reading	Factor	Measurement	Limit	Over	Detector	Antenna Height	Table Degree	Comment
		MHz	dBuV	dB/m	dBuV/m	dBuV/m	dB		or	degree	
1	*	39.7000	24.17	7.73	31.93	40.00	-3.07	peak			
2		89.8167	15.40	8.37	23.77	43.50	-19.73	peak			
3		149.6333	11.09	14.15	25.24	43.50	-18.26	peak			
4		158.1333	23.64	8.51	32.15	43.50	-11.35	peak			
5		578.0500	1.82	24.60	26.42	46.00	-19.58	peak			
6		873.9000	0.13	30.03	30.16	46.00	-15.84	peak			

13. AUDIO LOW PASS FILTER RESPONSE

13.1 LIMITS

2.1047(a): Voice modulated communication equipment. A curve or equivalent data showing the frequency response of the audio modulating circuit over a range of 100 to 5000 Hz shall be submitted. For equipment required to have an audio low-pass filter, a curve showing the frequency response of the filter or of all circuitry installed between the modulation limiter and the modulated stage shall be submitted.

90.242(b)(8): Recommended audio filter attenuation characteristics are given below:

Audio band	Minimum Attenuation Rel. to 1 KHz Attenuation
3 – 20 KHz 20 – 30 KHz	$60 \log_{10}(f/3)$ dB where f is in KHz 50dB

13.2. METHOD OF MEASUREMENTS

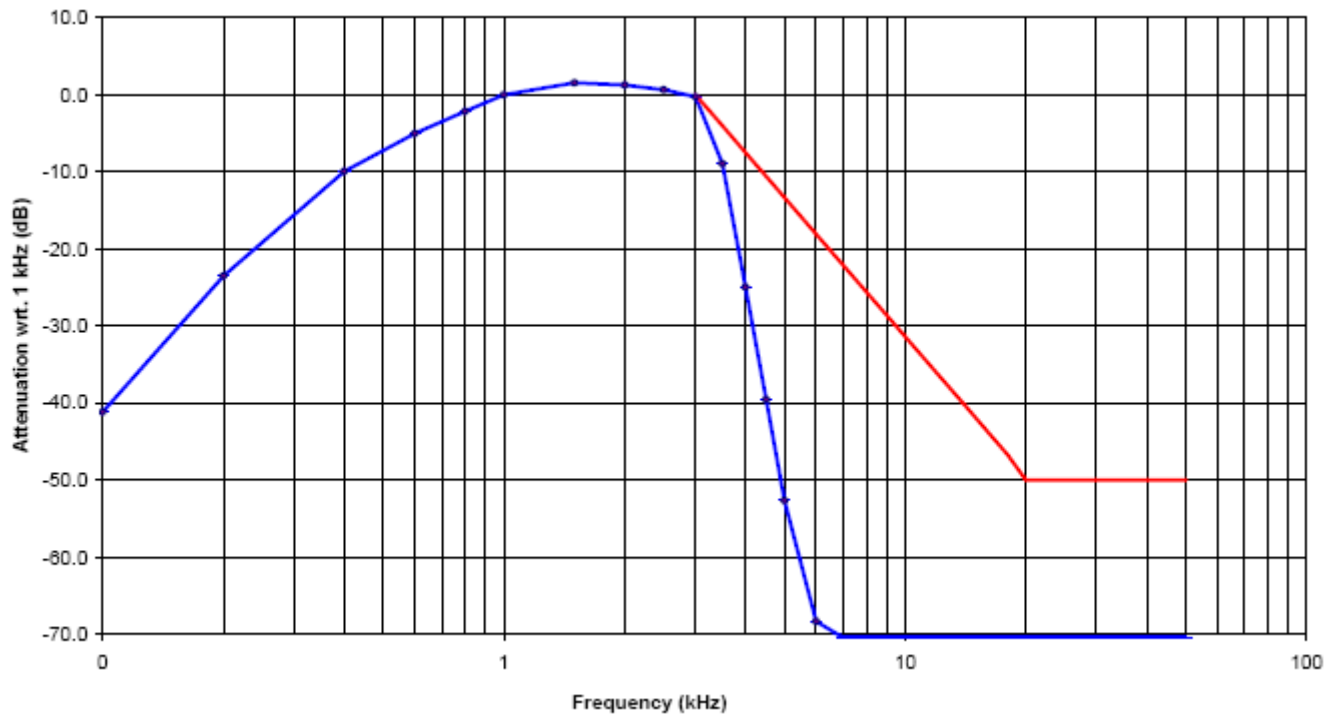
The rated audio input signal was applied to the input of the audio low-pass filter (or of all modulation stages) using an audio oscillator, this input signal level and its corresponding output signal were then measured and recorded using the FFT Digital Spectrum Analyzer. Tests were repeated at different audio signal frequencies from 0 to 50 KHz.

13.3 TEST DATA

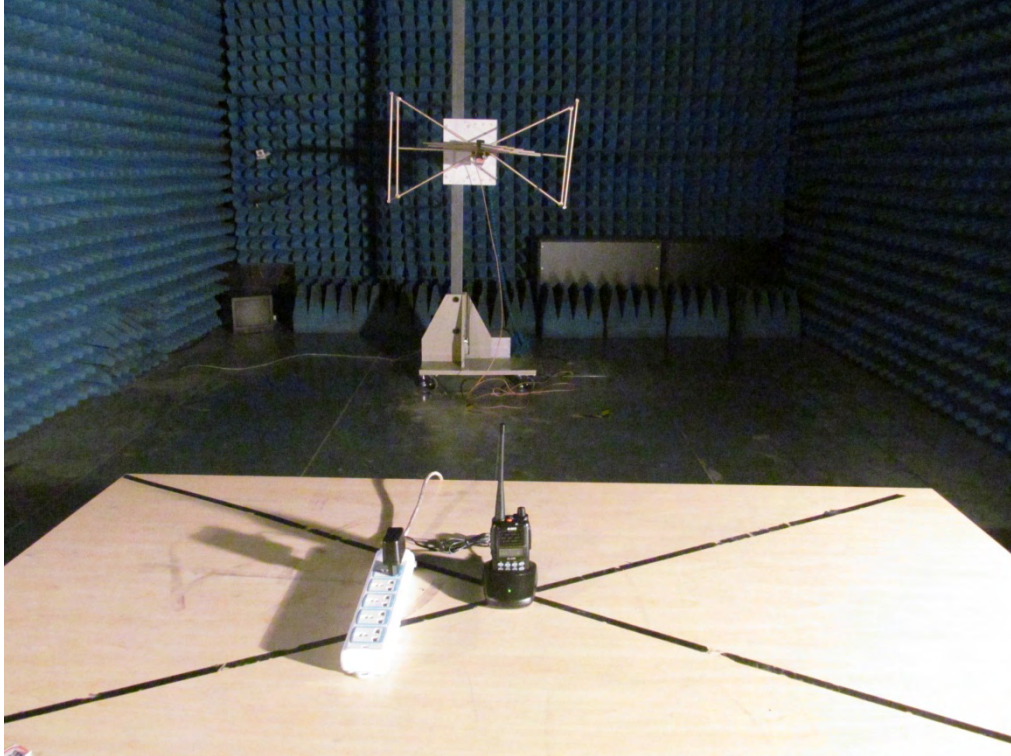
12.5 KHZ CHANNEL SPACING, F3E, FREQUENCY OF ALL MODULATION STATES

Frequency (KHz)	Audio In (dBV)	Audio out (dBV)	Attenuation (Out_In) dB	Attenuation Rel. to 3 KHz (dB)	Recommended Attenuation (dB)
0.1	-76.21	-31.26	46.3	-36.5	
0.2	-76.21	-17.41	58.2	-25.6	
0.4	-76.21	-6.33	71.6	-12.8	
0.6	-76.21	0.36	74.2	-6.4	
0.8	-76.21	4.12	78.9	-2.9	
1.0	-76.21	7.15	83.6	0.0	
1.5	-76.21	8.22	84.8	2.2	
2.0	-76.21	8.95	85.3	1.6	
2.5	-76.21	7.47	83.8	0.7	
3.0	-76.21	6.22	82.5	-1.8	0
3.5	-76.21	2.58	78.4	-4.9	-5
4.0	-76.21	-2.44	74.6	-9.4	-8
4.5	-76.21	-9.26	68.2	-16.5	-13
5.0	-76.21	-15.22	60.6	-21.7	-16
6.0	-76.21	-21.28	54.1	-28.6	-19
7.0	-76.21	-31.66	46.2	-36.4	-23
8.0	-76.21	-39.27	37.9	-47.6	-27
9.0	-76.21	-62.00	15.1	-66.9	-29
10.0	-76.21	-62.00	15.1	-66.4	-32
12.0	-76.21	-62.00	15.1	-66.4	-38
14.0	-76.21	-62.00	15.1	-66.4	-41
16.0	-76.21	-62.00	15.1	-66.4	-45
18.0	-76.21	-62.00	15.1	-66.4	-48
20.0	-76.21	-62.00	15.1	-66.4	-50
25.0	-76.21	-62.00	15.1	-66.4	-50
30.0	-76.21	-62.00	15.1	-66.4	-50
35.0	-76.21	-62.00	15.1	-66.4	-50
40.0	-76.21	-62.00	15.1	-66.4	-50
45.0	-76.21	-62.00	15.1	-66.4	-50
50.0	-76.21	-62.00	15.1	-66.4	-50

Note: Due to the difficulty of measuring the Frequency Response of the internal low-pass filter, the Frequency Response of All Modulation States is performed to show the roll-off at 3 KHz in comparison with the recommended audio filter attenuation.



APPENDIX I
PHOTOGRAPHS OF SETUP
RADIATED TEST SETUP



APPENDIX II
EXTERNAL VIEW OF EUT
TOTAL VIEW OF EUT



TOP VIEW OF EUT



BOTTOM VIEW OF EUT



FRONT View of EUT



BACK VIEW OF EUT



LEFT VIEW OF EUT



RIGHT VIEW OF EUT



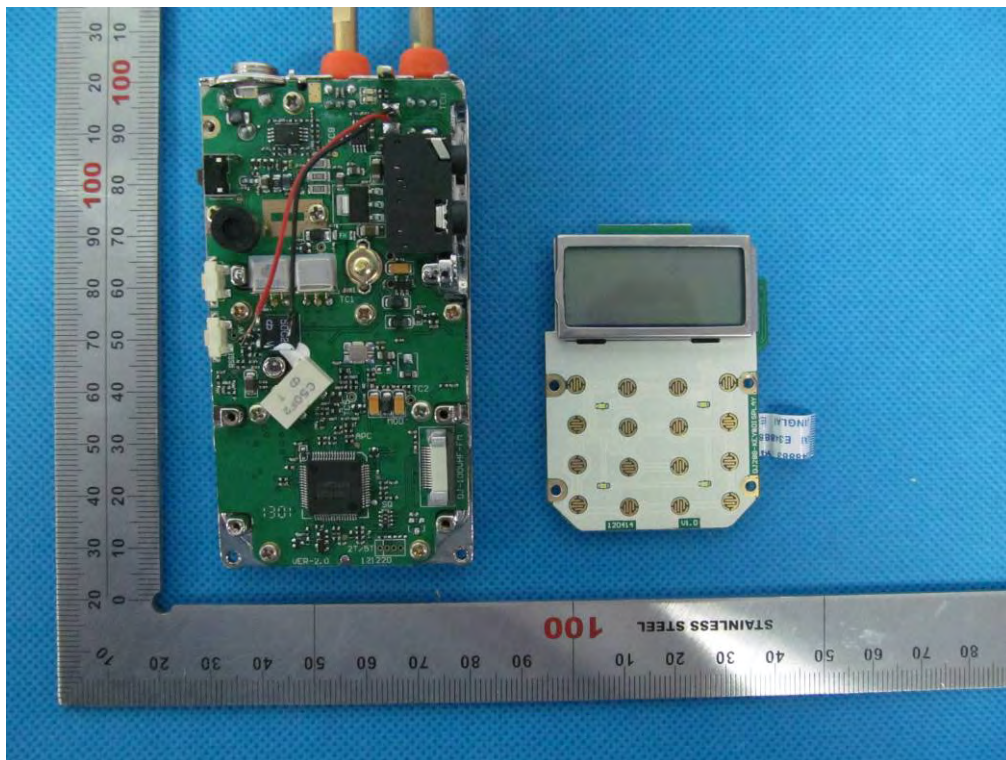
OPEN VIEW-1 OF EUT



OPEN VIEW-2 OF EUT



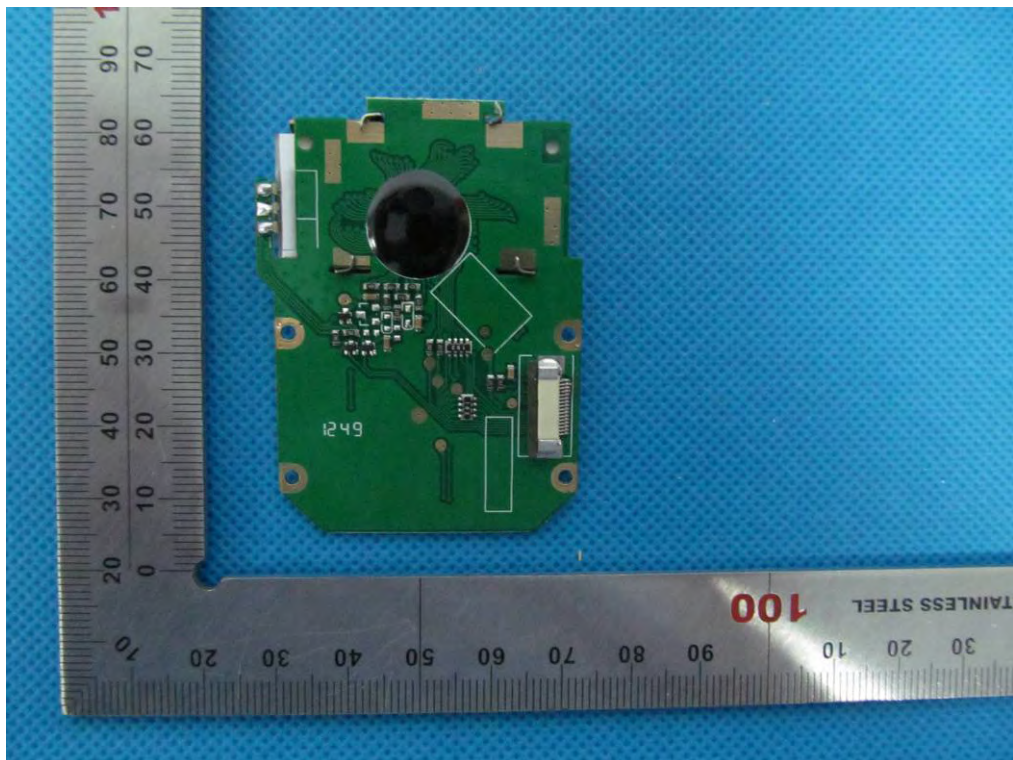
INTERNAL VIEW-1 OF EUT



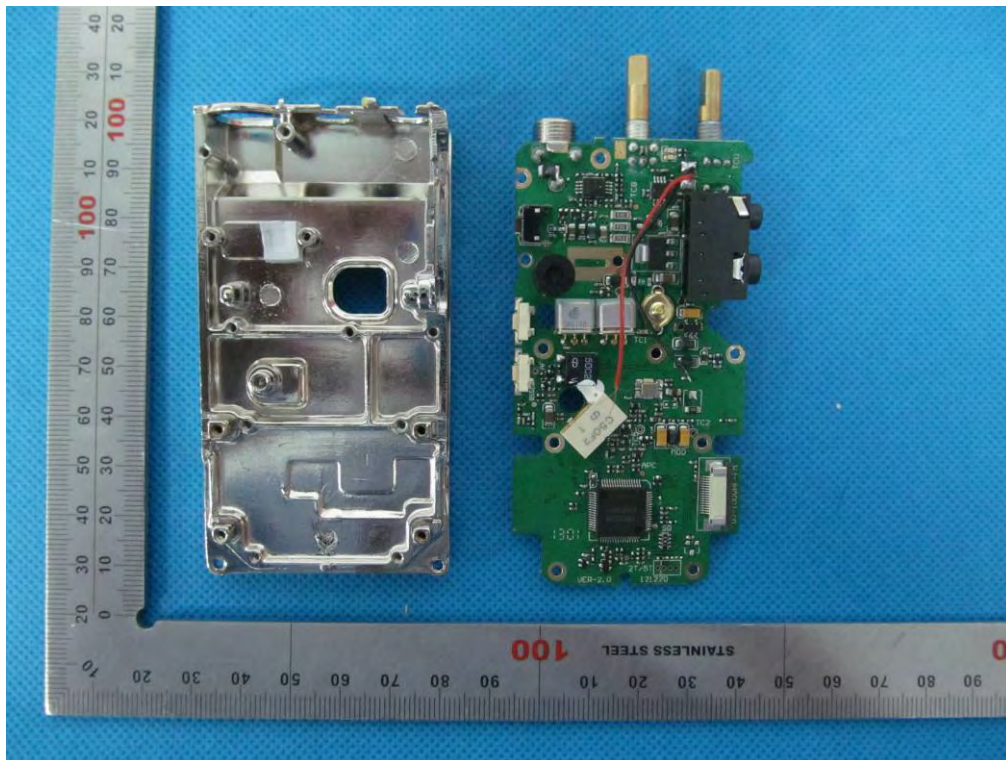
INTERNAL VIEW-2 OF EUT



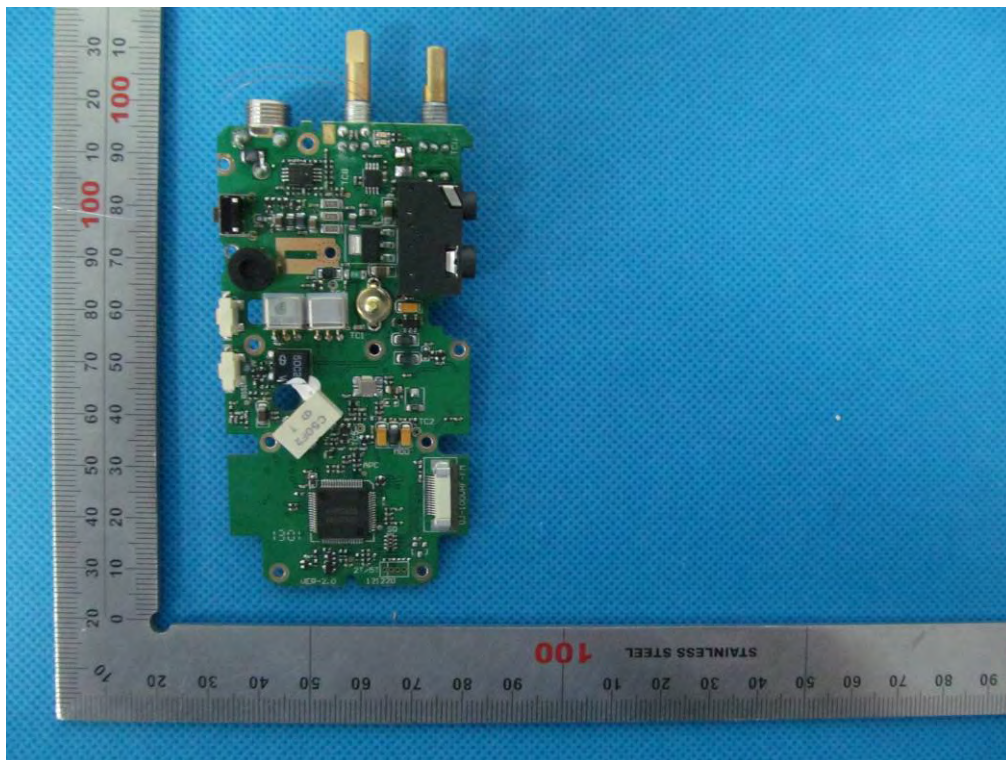
INTERNAL VIEW-3 OF EUT



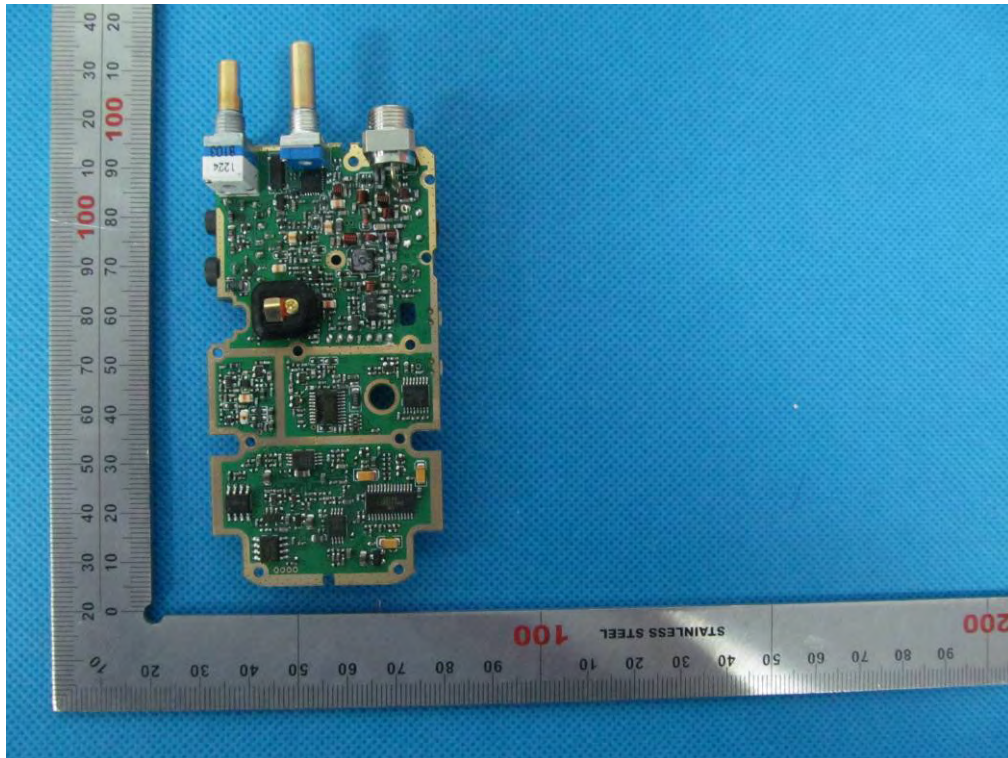
INTERNAL VIEW-4 OF EUT



INTERNAL VIEW-5 OF EUT



INTERNAL VIEW-6 OF EUT



-----END OF REPORT-----