



OUTDOOR TECH.

CHIPS

**UNIVERSAL
WIRELESS**

**HELMET
AUDIO**

Hi.



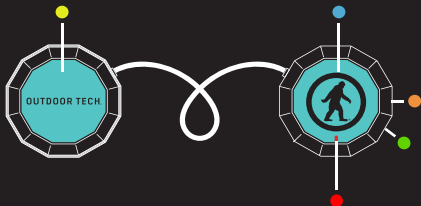
Good call on picking up the Outdoor Tech® Chips, universal wireless helmet audio. Your experience of the universe will soon be enhanced wirelessly. This manual exists to help make sure that you use them correctly, so you're definitely going to want to relax for a hot second and look through this.

Kisses,



OUTDOOR TECH.

ANATOMY



- Left ear button
- Right ear button
- Microphone

- LED light
- Charge port

I ANATOMY (CONTINUED)



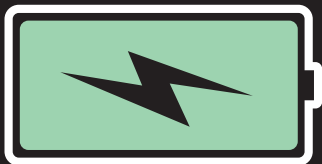
FUNCTION

EARPIECE

ACTION

Power On	RIGHT ■	Press for 3 sec
Power Off	RIGHT ■	Press for 3-5 sec
Enter Pairing Mode	RIGHT ■	Press for 5-7 sec
Answer	RIGHT ■	Short press once
Reject	RIGHT ■	Press for 2 sec
Hang Up	RIGHT ■	Short press once
Mute	RIGHT ■	Short press twice
Play	RIGHT ■	Short press once
Pause	RIGHT ■	Short press once
Skip Forward	● LEFT	Press till song skips
Skip Back	● LEFT	Press for 3 sec
Raise Volume	● LEFT	Short press once
Lower Volume	● LEFT	Short press twice
Mute	RIGHT ■	Short press twice

POWER UP

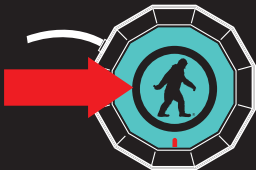


For best results, fully charge your Chips before use.

The indicator light located on the right ear piece will flash red to indicate a low battery.

NOTE: It takes 2.5 hours to give your Chips a full charge.

PAIRING



To pair the Chips with a Bluetooth-enabled device:

Prior to using the OT Chips for the first time, you will have to pair them with a Bluetooth-enabled device. The pairing procedure may vary for different devices. Please refer to your device's user manual for further information. The general pairing procedure is as follows:

- 1.) Place the OT Chips and Bluetooth-enabled device no more than 3 feet apart.
- 2.) Hold the right ear button down until the LED flashes red and blue alternately.
- 3.) Activate your device's Bluetooth function and set your device search for Bluetooth devices within range. Select "OT CHIPS" from the list of devices shown.
- 4.) According to the indication, enter password or Use pairing code: 0000.
- 5.) If prompted by your device to connect, select "Yes" (this will vary among devices)
- 6.) After successfully connecting, the blue LED will flash twice or three times every 4 seconds.

You should now be able to play music & make/receive calls using the headset. Hooray.

TALK



The built-in microphone means that the Chips can be used wirelessly.

***NOTE:** The built-in microphone only works when connected via Bluetooth.

The following are tips on how to use your Chips to speak on the telephone:

- | | |
|--|--|
| Answer a call..... | Press right ear button |
| End a call..... | Press right ear button |
| Decline a call..... | Press and hold the right ear button for two seconds |
| Make a call..... | Use your phone to dial as usual
Listen and talk through the Chips |
| Mute/cancel mute during a call..... | Press the right ear button twice |
| Transfer conversation to mobile phone or headset during call.. | Press and hold right ear button for 2 seconds |
| Volume up during a call..... | Press and hold left ear button for 2 seconds |
| Volume down during a call..... | Press left ear button |

SPECS



Battery life..... Music playing/9 hours,
talk time/10 hours standby
time 200 hours

*Battery life varies subject to different
playing circumstances, such as music type
and volume.

Bluetooth Version.... V2.1+EDA
Bluetooth Profiles.... HSP,HFP,A2DP AND AVRCP
Operating distance.. 30 feet
Charging input..... DC5.0V/90~130mA
Dimensions..... 51x14.5mm
Weight..... 60g
Battery capacity..... 240mAH

FAQ



Why is the red LED flashing twice every 20 seconds?

The battery is low. Recharge it.

Why is the red LED off when charging?

- A. Make sure the connection between the charging cable and the Chips is tight.
- B. If the Chips haven't been used in awhile, the light may not come on immediately. Charge the battery for at least 30 minutes.

Why can't I pair my Chips?

Your bluetooth device and the Chips must both be in pairing mode.

Why do I have Bluetooth signal loss/dropout/un-clear conversations?

- A. Move your Chips closer to your device.
- B. Make sure your Chips are charged up.
- C. Turn off your Chips and device, then power up and reconnect.

Why can't the Chips hear my voice during a call?

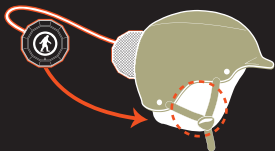
- A. Make sure the Chips are on.
- B. Make sure the volume is not too low or muted.
- C. Make sure the Chips are properly connected with your device.
- D. Make sure the Chips are within range of your device.

CARE & MAINTENANCE

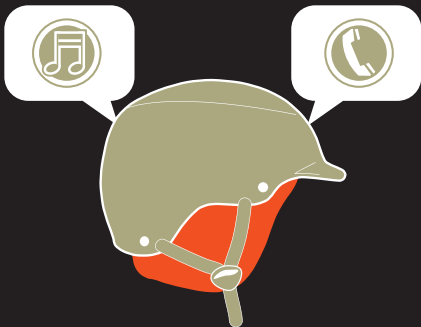


- Keep the Chips dry
- Keep the Chips away from direct sunlight or hot places. High temperatures will shorten the life of electronic devices, destroy the battery or distort certain plastic parts.
- Do not try to disassemble the Chips.
- Do not let the Chips fall onto the floor or other hard surfaces. The internal circuit board may get damaged.
- Do not use intensive chemical products or detergent to clean the product.
- Do not scratch the surface with sharp things.

PUT THE CHIPS IN YOUR HELMET



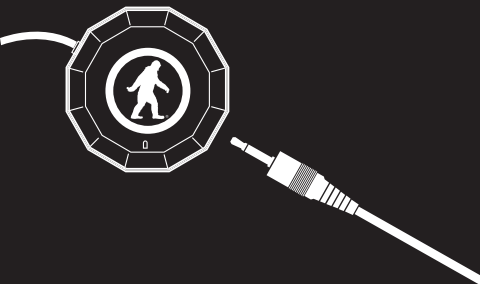
1. Drop the Chips into the slots inside your helmet liner.



2. Rock out, make calls, and, you know, ski and snowboard and whatnot.

JACK IT IN

The included 3.5mm cord allows you to rock out when the Chips are out of power.



Plug one end into the Chips, and the other into your preferred music playing robotic device. Then proceed to rock out.

*The microphone will no longer function while you're playing music through the 3.5mm jack. Sorry.

DON'T BE SO ANTISOCIAL



Facebook.com/outdoortech

Twitter & Instagram: @outdoortech

Questions, comments, complaints, secret desires,
or just to say what's up: email info@outdoortech.com

K bye.

This device complies with Part 15 of the FCC Rules. Operation is subject to the following two conditions: (1) this device may not cause harmful interference, and (2) this device must accept any interference received, including interference that may cause undesired operation. Changes or modifications not expressly approved by the party responsible for compliance could void the user's authority to operate the equipment.

This equipment has been tested and found to comply with the limits for a Class B digital device, pursuant to Part 15 of the FCC Rules. These limits are designed to provide reasonable protection against harmful interference in a residential installation.

This equipment generates, uses and can radiate radio frequency energy and, if not installed and used in accordance with the instructions, may cause harmful interference to radio communications.

However, there is no guarantee that interference will not occur in a particular installation.

If this equipment does cause harmful interference to radio or television reception, which can be determined by turning the equipment off and on, the user is encouraged to try to correct the interference by one or more of the following measures:

- Reorient or relocate the receiving antenna.
- Increase the separation between the equipment and receiver.
- Connect the equipment into an outlet on a circuit different from that to which the receiver is connected.
- Consult the dealer or an experienced radio/TV technician for help.



outdoortech.com