



**LS-P32NB**



**LS-A32NB**



**LS-P32VB**

cause harmful interference to radio or television reception, which can be determined by turning the equipment off and on, the user is encouraged to try to correct the interference by one more of the following measures:

- . Reorient or relocate the receiving antenna.
- . Increase the separation between the equipment and receiver.
- . Connect the equipment into an outlet on a circuit different from that to which the receiver is connected.
- . Consult the dealer or an experienced radio/TV technician for help.

#### **WARNING**

Changes or modifications not expressly approved by the manufacturer could void the user's authority to operate the equipment.

## **CONTENTS**

Chapter 1. Installation

Chapter 2. Setting 'Event'

Chapter 3. CapVSudio Manual

Chapter 4. Q&A

#### **FCC INFORMATION TO THE USER**

This equipment has been tested and found to comply with the limits for a Class B digital device, pursuant to part 15 of the FCC Rules. These limits are designed to provide reasonable protection against harmful interference in a residential installation. This equipment generates, uses and can radiate radio frequency energy and, if not installed and used in accordance with the instructions, may cause harmful interference to radio communications. However, there is no guarantee that interference will not occur in a particular installation. If this equipment does

## 1. Specifications

- 1/3" color VGA CMOS Image sensor
- 320k Pixels
- Lens F1.8, f=5.8
- Snap Shot on the top
- VGA 15 Fps
- CIF 30Fps
- QCIF 30Fps

## 2. System Requirements

- Microsoft Windows 98, Windows ME, Windows 2000
- Pentium MMX 200MHz or higher
- 32MB RAM or higher (64MB encouraged)
- 16bit color display or higher
- Connect to USB Port

## Chapter 1. Installation

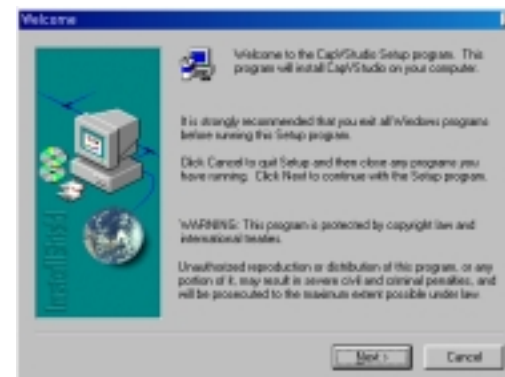
### Install CapVstudio

1. Shut down all running programs, including virus protection programs. Some virus protection programs interfere with installation. Insert the L&S CD-ROM in your computer's CD-ROM Driver. Click the 'CapVStudio Install' to install and follow the

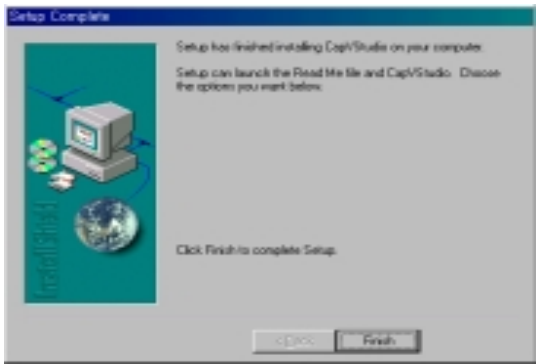
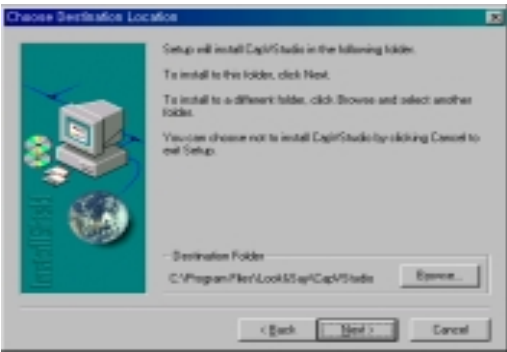
onscreen prompts.



2. Click 'Next'..

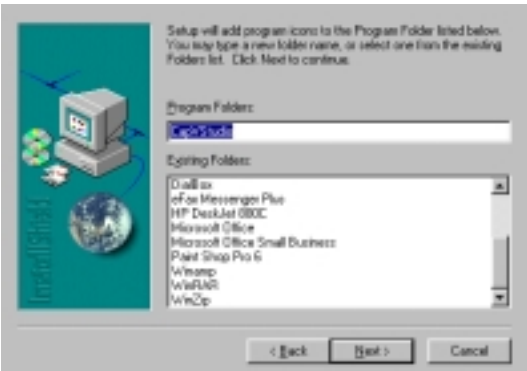


3. Dialogue box for selecting folder to be installed will appear. You may use default folder, or click 'Browse' to specify other folder you want.



## Install Driver

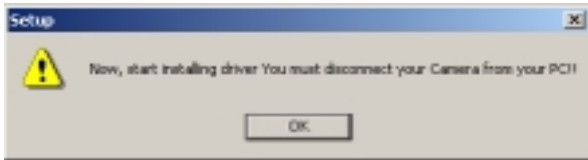
4. Type a new folder name, or select one from the existing Folder list. And click 'Next'.



1. To continue, click the 'Driver Install'.

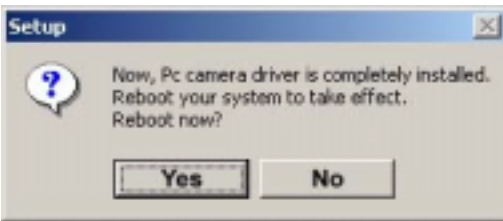


Notice to take out the PC Camera from USB Port will appears before start install the driver. If you didn't connect PC Camera to USB port, click 'OK'.

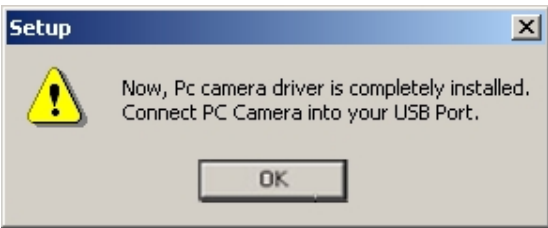


5. Dialogue box that notifies finishing the complete setup will appear.

The dialogue box that notifies the driver completely installed will appear as below. If you use Windows 98, ME Operating system, please click 'Yes' to restart the system. After system is restarted, please connect the PC Camera to USB Port.



If you use Windows 2000 Operating system, you don't need restart the system. Please connect the PC Camera to USB Port.

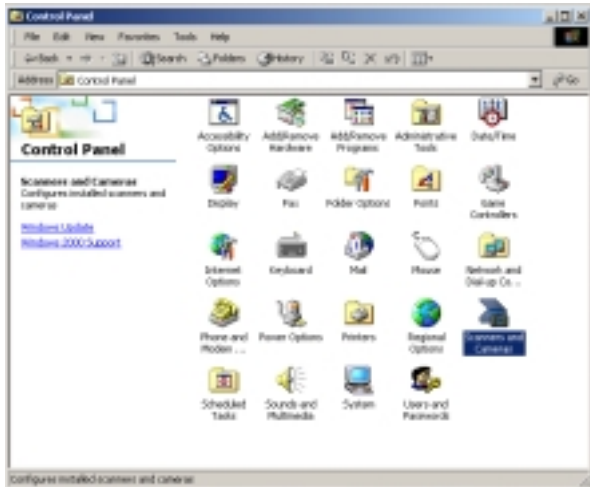


Click 'EXIT' to finish the installation.

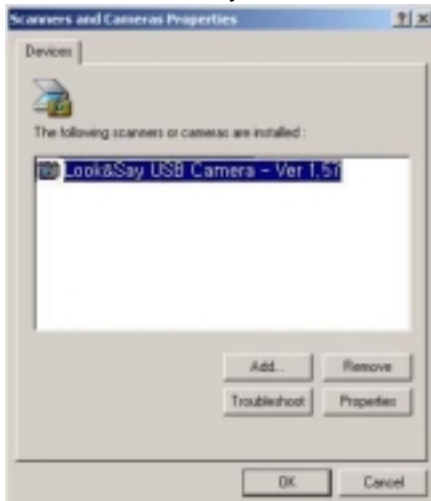


## Chapter 2 Setting 'Event'

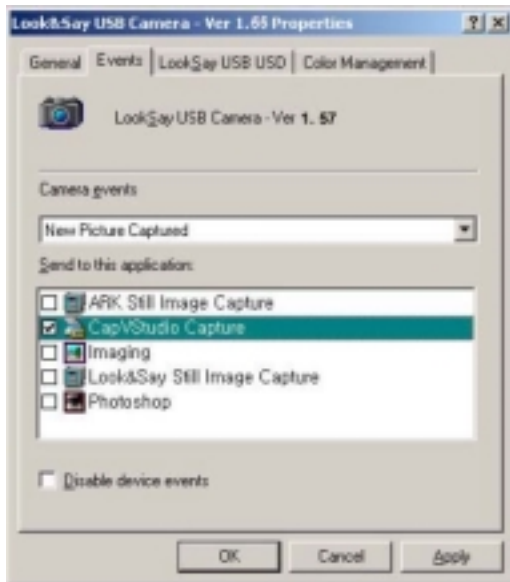
1. To capture image by snapshot button on the top of PC camera, set the 'Event' as followings. Go to Control Panel, and then double click 'Scanner & Camera'.



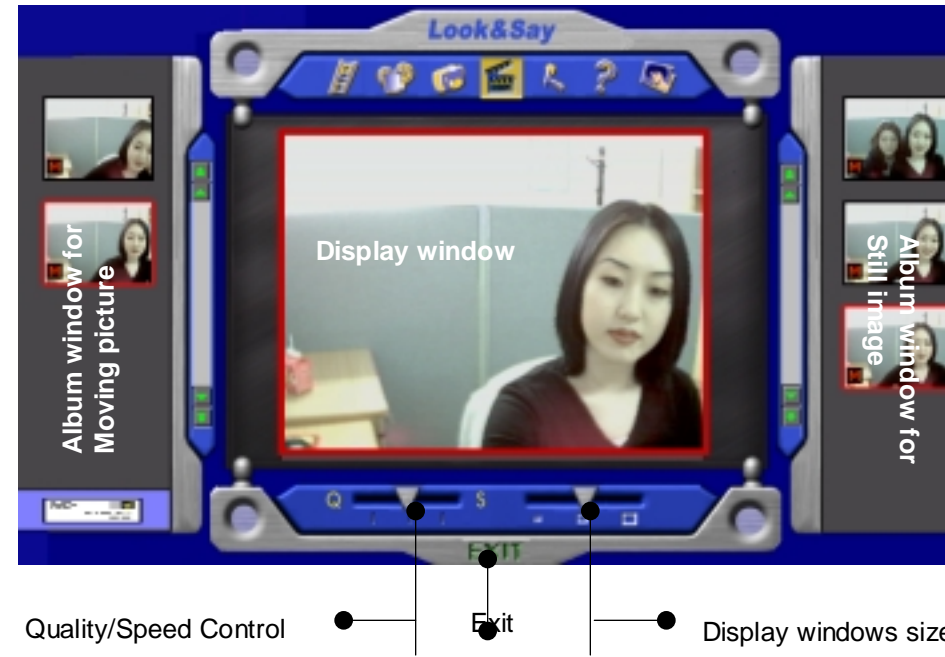
2. Select the 'Look&Say USB Camera – ver 1. 57', then click 'Properties'.



3. Select 'Event' tap, then Choose 'New Picture Captured' from the 'Camera Event' top-down menu. Check ONLY 'CapVStudio Camera' from the Application List screen of 'Send to this application'. Then Click 'Apply' and 'OK'



\* If 'Event' is not set, the extra Still Image Capture window will appear.



### Studio ON/OFF

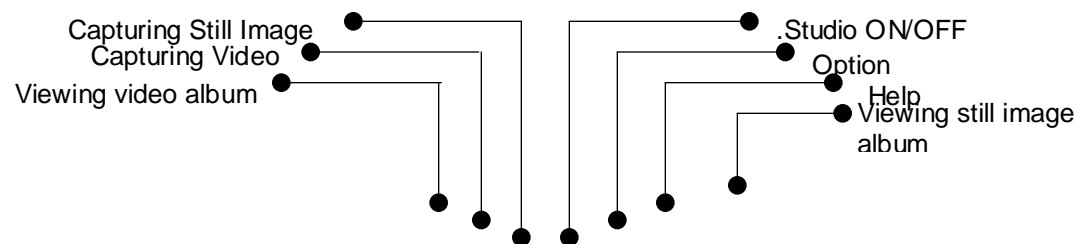
Click the button 'Studio ON/OFF' to turn on or off the display window.



### Capturing Video

Select the folder to save the  
and enter the file name

## Chapter 3 CapVStudio Manual





Set up capturing time duration

Check to record audio

If you click the button 'Capturing Video' the controlling box will appear. Please select the folder to save the file and enter the file name. And time duration (Default time : 5second), and check to the capture audio(If you like to). After finished the setting, then click 'Capture' to start video capturing. After completed capturing video, captured video file (in the form of AVI file format) will be saved in the video album automatically (Default - Save to : c:/program files/look&say/capvstudio/album/video/).

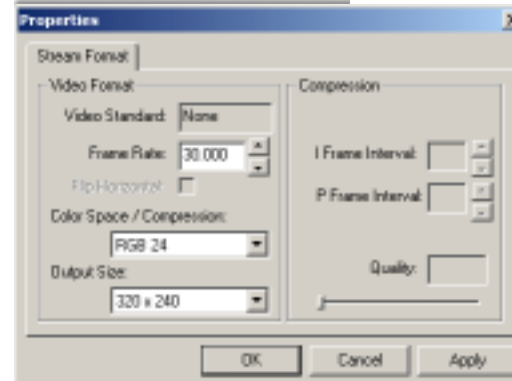
## Capturing Still Image



Click the button 'Capturing Still Image' to capture still image. Select picture number, interval time, Color display to capture still image. For smaller data volume, select lower bit color. For clearer picture, select higher bit color. After selected, click

'Capture'. Captured image file will be saved in the still image album automatically. (Save to : c:/program files/look&say/capvstudio/album/picture/)

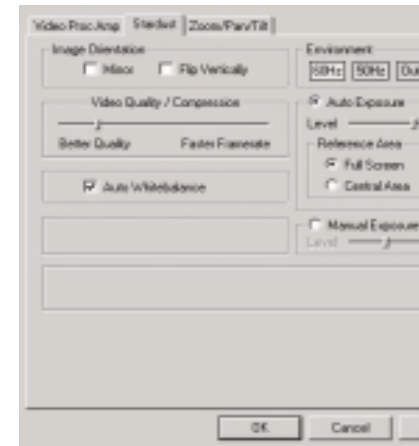
## Setting Options

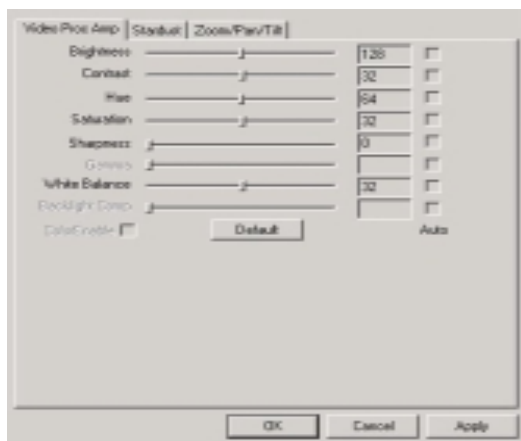


Click 'Option'. Select one of two options to control the video format or video sources. Then click 'OK'.

After select the 'Video Format', the window will appear as above.

Set up Frame Rate, Color space/Compression, Display Size. Then click 'Apply'.





After select the 'Video Source', the window will appear as above.  
From the 'Video Proc Amp' tap, set up the suitable Configuration options with the place using the PC camera. After finished setting, then click 'Apply'.

### <For LS-A32NB / LS-P32NB / LS-D32NB Type PC Camera>

Set White Balance to be automatic. (encouraging option)

To use PC Camera outside click 'Outdoor' and set up auto exposure / auto white balance

Move the screen right to left(Mirror), up to down(Flip Vertically).

To reduce flickers, set the suitable fluorescent lamp frequency.

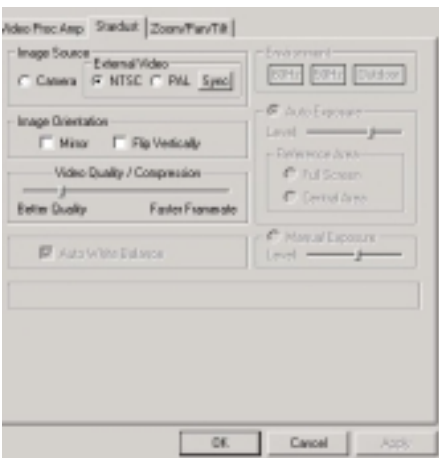
(In case of using in Korea, select 60Hz.

In case of using in other country, select  
normal fluorescent lamp frequency

which is suitable to use in the country.)

Click 'OK'.

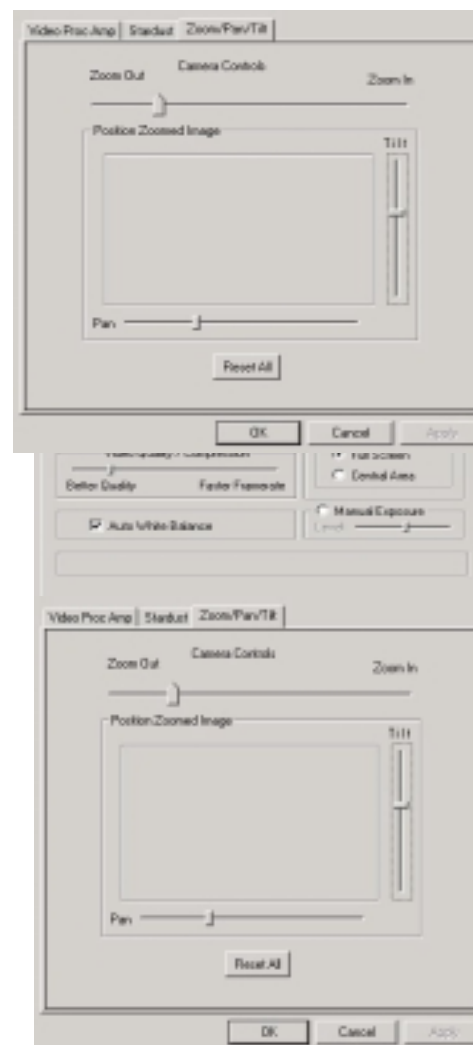
Control zoom value to zoom in the screen. On screen zoomed in,  
you can turn the screen focus right and left / up and down.  
(Can not zoom in with VGA size)



After finished all of the setting, click  
'Apply'.

### <For LS-P32VB Type PC Camera>

Select NTSC or PAL to capture and download  
video from the camcorder, VCR or DVD/VCD



into the computers. Click 'Sync' for  
synchronous.

(In case of using in Korea, USA,  
Canada, Japan, select NTSC. In case of  
using in other country, select the  
television system color which is suitable  
to use in the country.)

Set White Balance to be automatic.  
(encouraged option) To use PC Camera  
outside click 'Outdoor' and set up auto  
exposure /auto white balance.

Move the screen right to left(Mirror), up  
to down(Flip Vertically).

To reduce flickers, set the suitable  
fluorescent lamp frequency.

(In case of using in Korea, select 60Hz.  
In case

of using in other country, select normal  
fluorescent lamp frequency which is  
suitable to use in the country.) Click  
'OK'.

Control zoom value to zoom in the  
screen. On screen zoomed in, you can  
turn the screen focus right and left (Pan)  
/ up and down(Tilt).

(Can not zoom in with VGA size). After  
finished setting, click 'Application'.

### Setting Quality / Speed



Quality/

Speed Control

The 3-level setup for the Quality/Speed is possible. Setup appropriate level what you  
desire. (As moving the button to the right, the quality gets high quality but the speed  
will be slower. Moving the button to the left, gets the poor quality but the speed will be  
gets faster.)



## Setting Display Size



Setting Display Size

From the left, each button indicates the display window size of 160 X 120(QCIF), 320 X 240(CIF), 640 x 480(VGA) pixel, respectively. Choosing the larger window size means the displaying speed become slower. Please, Adjust the window size as you require for the purpose what you want.



## Help

To get help about the program and camera click the button 'Help'.  
To search for a particular subject, choose HELP INDEX from the HELP menu and enter your subject



## Viewing Video Album



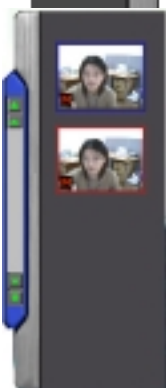
Click the button 'Viewing video album' to display video album. This window allows you to look the captured video briefly. Double click any one displayed on the video album to play as you captured video. (When clicking the right button of your mouse. The menu (such as View, Delete, and Save As) will be appeared. The menu 'View' is used to play the video, the menu 'Delete' is used to remove it, and the menu 'Save As' is used to copy the selected video to the other location.)



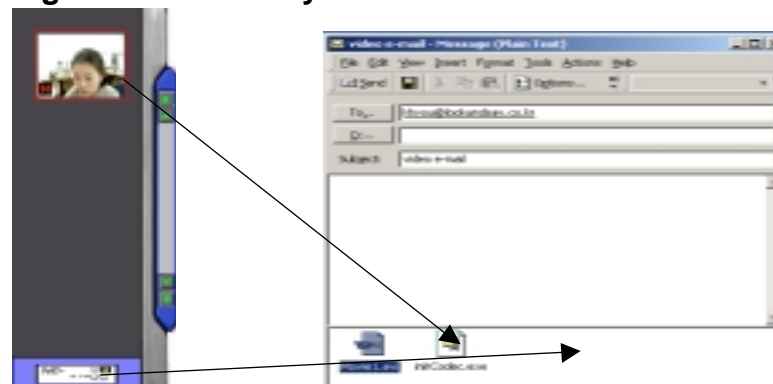
Click

## Album of Still Images

Click the button 'Viewing Still Image' to display still image album. The window allows you to look still images briefly. Double click any picture to see or edit (Need the image editing program).



## Sending Video/Picture by e-mail



### The process of sending video/picture by e-mail is as followings.

1. Start running e-mail program.
2. To attach the file, drag or select video or image files which you want to send. ( Note: Only for the video data, you must attach 'initCodec' and send it together that is needed to play the video by the receiver. But for sending the still images, no need attach 'initCodec'. )

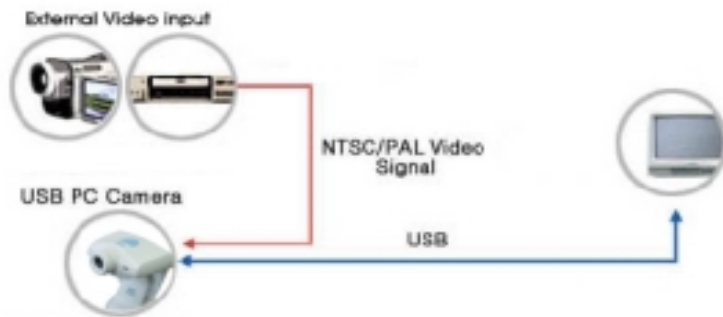


## Exit

The button 'EXIT' will stop the running program and exit it.

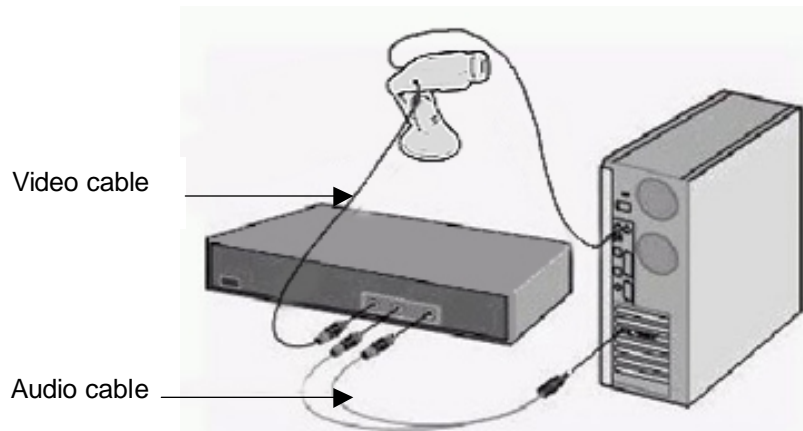
## How to connect to Camcorder / VCR or DVD/VCD with L&S LS-P32VB PC Camera





## 1. External Video Sources: Connecting a VCR

Here is an example of a VCR connected to the L&S PC Camera LS-P32AV:



- One end of the supplied external video input cable connects to the Video In port of the L&S PC Camera and the other end to the Video Out port of the VCR.
- To include the sound from the video as a part of the recording, connect the audio cable from the VCR to the computer's MIC port of sound card.

## 2. External Video Sources: Connecting a Camcorder



- One end of the supplied external video input cable connects to the Video In port of the L&S PC Camera and the other end to the Video Out port of the camcorder.
- To include the sound from the video as a part of the recording, connect the audio cable from the camcorder to the computer's MIC port of sound card.

## Chapter 4 Q&A

### Q. Why is the video is slower than real?

- A. Even though the camera continues to transmit image signals, PC doesn't have an ability to handle lots of data continuously. The amount of data in large amount of data could interrupt or stop display of video data for a while.

### Q. The screen is too unclear and foggy to view it. What should I do?

- A. This is because it is out of focus, or there is a foreign substance on the lens surface. Correct the focus or remove the foreign substance with a piece of soft cloth.

### Q. When I run CapVStudio for the first time, the colors on the screen change.

- A. When you run CapVStudio for the first time, there could be screen trembling because the camera makes automatic environmental settings. This does not affect the capture function.

**Q. No video displayed in imaging devices**

- A. The camera drivers are not correctly installed.

To install the correct camera drivers:

1. Right click My Computer and go to the Device Manager tab.
2. Click the Imaging Device.
3. Select and Remove "Look&Say USB Camera Ver-1.xx ".
4. Close Device Manager.
5. Unplug the USB camera.
6. Install the Drive again.
7. Power down the computer.
8. Once the system is powered back up, plug the camera back in.

**Q. When PC is down unexpectedly**

- A. First, check whether the PC camera is connected to USB correctly. When unplugged the PC camera, on playing CapVStudio, the computer might be down. Don't disconnect the PC camera from USB Port when you are using the CapVStudio or the Internet Video chatting program.

The amount of data in large data could make PC down. Please restart your computer.