

**L&S LS-A32NB**

**USB PC CAMERA**

*Owner's Manual*

**FCC INFORMATION TO THE USER**

This equipment has been tested and found to comply with the limits for a Class B digital device, pursuant to part 15 of the FCC Rules. These limits are designed to provide reasonable protection against harmful interference in a residential installation. This equipment generates, uses and can radiate radio frequency energy and, if not installed and used in accordance with the instructions, may cause harmful interference to radio communications. However, there is no guarantee that interference will not occur in a particular installation. If this equipment does cause harmful interference to radio or television reception, which can be determined by turning the equipment off and on, the user is encouraged to try to correct the interference by one more of the following measures:

- . Reorient or relocate the receiving antenna.
- . Increase the separation between the equipment and receiver.
- . Connect the equipment into an outlet on a circuit different from that to which the receiver is connected.
- . Consult the dealer or an experienced radio/TV technician for help.

**WARNING**

Changes or modifications not expressly approved by the manufacturer could void the user's authority to operate the equipment.

## Chapter 1. Installation

1. To install driver, click 'LS-A32NB Driver Install'.



2. To continue, click PC-Camera Driver Install. Notice to take out the PC Camera from USB Port will appears. If you didn't connect PC Camera to USB port, click 'Yes'.

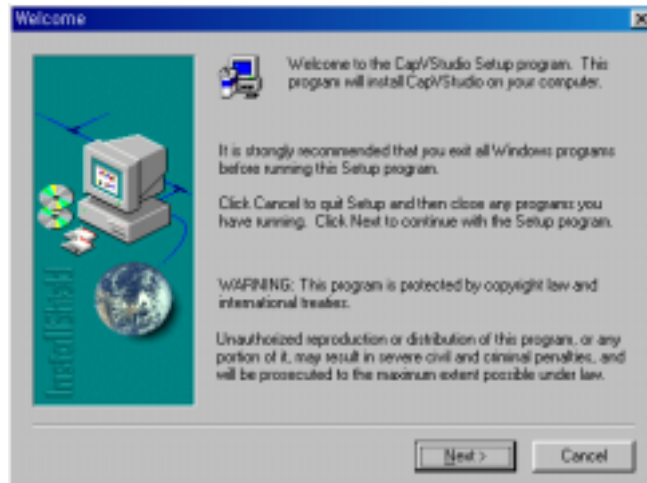
After system is restarted, please connect the PC Camera to USB Port



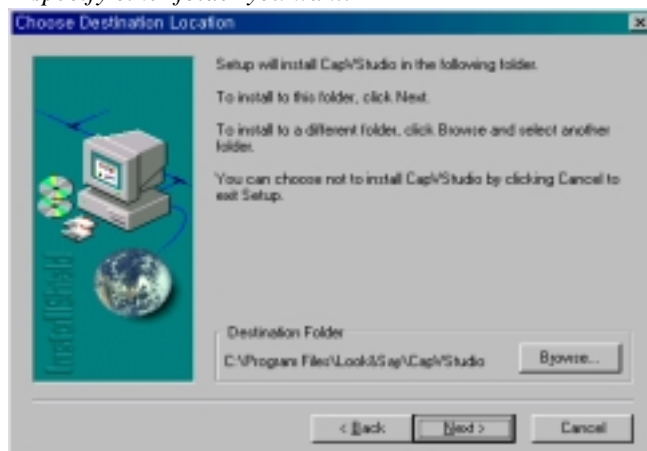
3. To install CapVStudio, click 'CapVStudio'.



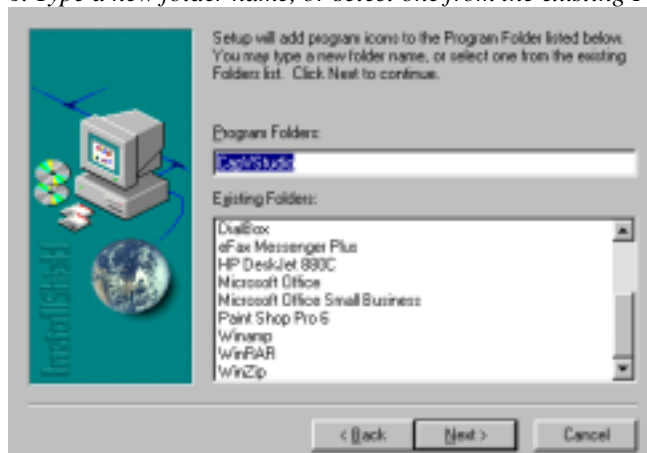
4. Click 'Next'.



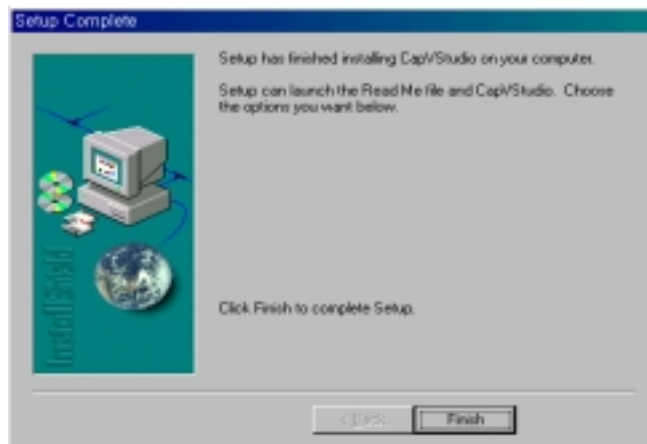
5. Dialogue box for selecting folder to be installed will appear. You may use default folder, or click 'Browse' to specify other folder you want.



6. Type a new folder name, or select one from the existing Folder list. And click 'Next'.

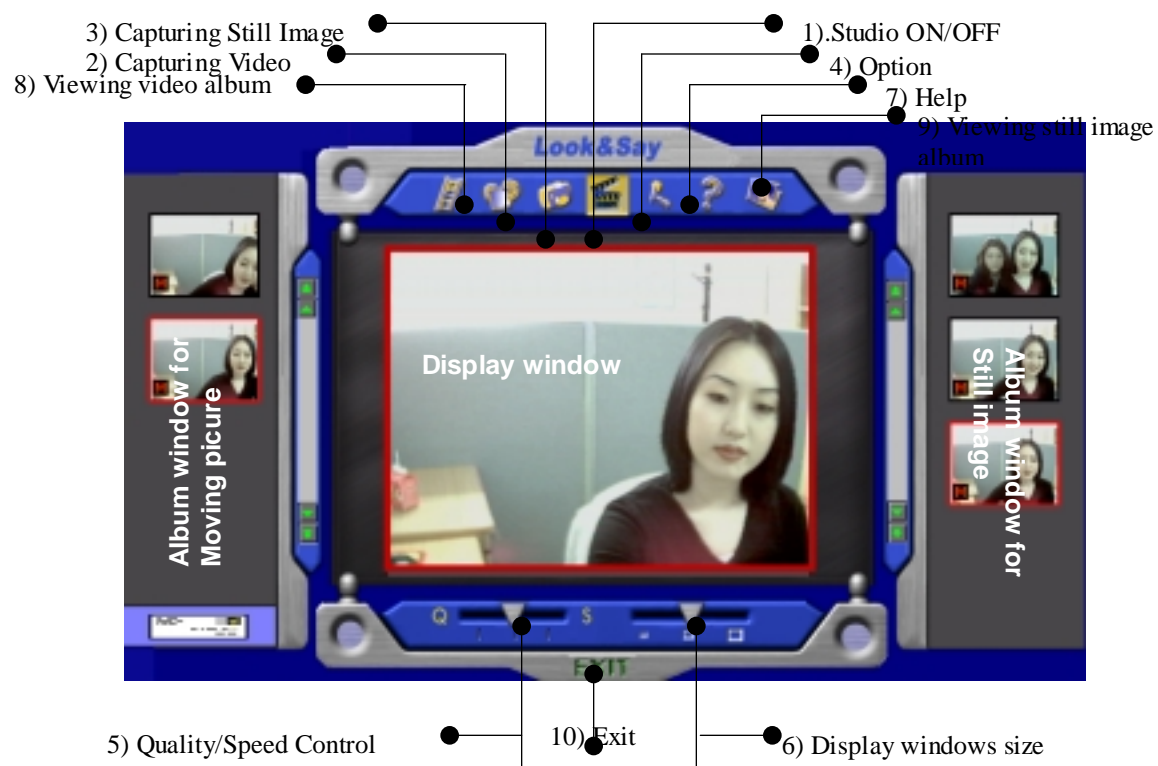


7. Dialogue box that notifies finishing the complete setup will appear.



Click 'Finish' to finish installation.

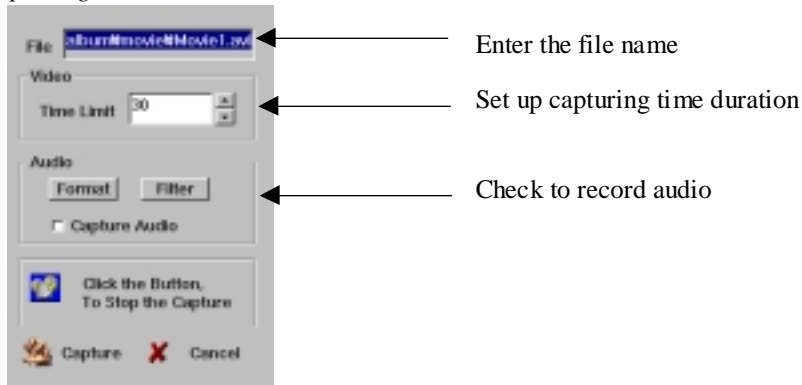
## Chapter 2 Program Manual



### 1. Studio ON/OFF

Click the button no.1) Studio ON/OFF to turn on or off the display window.

## 2. Capturing Video



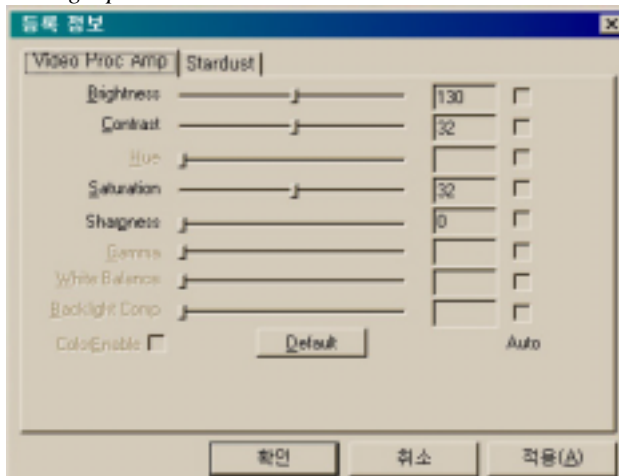
If you click the button no.2) Capturing Video, the controlling box will appear. Please input file name, enter capturing time duration (Default time : 5second), and check to capture audio. After finished the setting, click 'Capture' to start video capturing. After completed capturing video, captured video file (in the form of AVI file format) will be saved in the video album automatically (c:/program/lookandsay/capvstudio/video).

## 3. Capturing Still Image



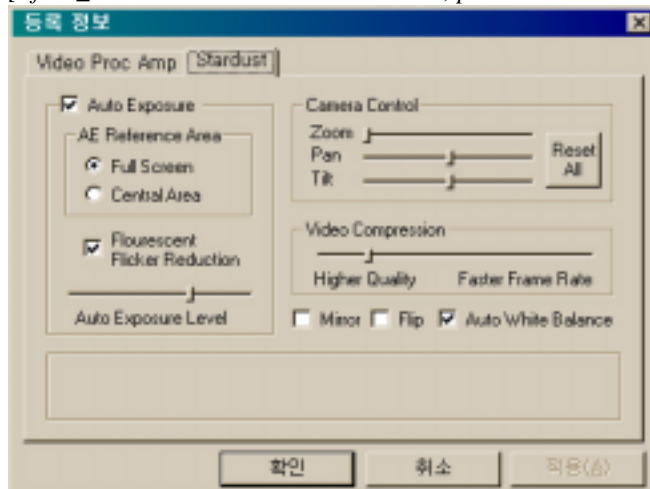
Click the button no.3) Capturing Still Image to capture still image. Select picture number and interval time to capture still image. After selected, click 'Capture'. Captured image file will be saved in the still image album automatically (c:/program/lookandsay/capvstudio/album/picture).

## 4. Setting Options



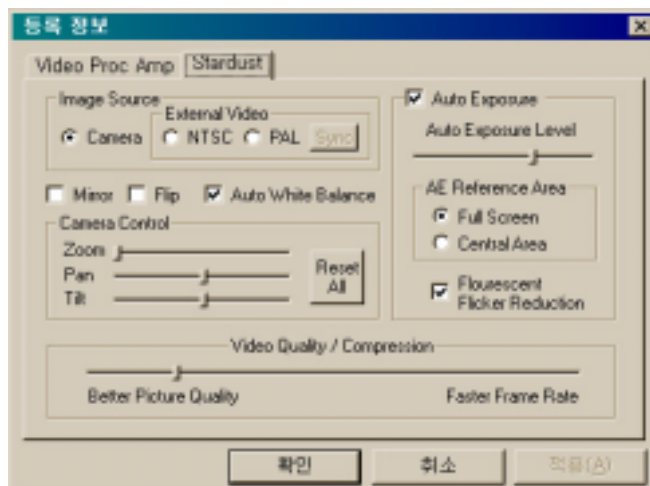
Click the button no.4) Option to set up the suitable configuration with the place using the PC camera. After finished setting, click 'Application'.

[ If LS\_A32NB is connected to USB Port, please control the options as below ]



Control zoom value to zoom in the screen. On screen zoomed in, you can turn the screen focus right and left / up and down. Set up auto exposure / auto white balance. After finished setting, click 'Application'.

[ If LS\_A32AV is connected to USB Port, please control the options as below ]



Select NTSC or PAL to capture and download video from the camcorder, VCR or DVD/VCD into the computers. Click 'Sync' for synchronous. After finished setting, click 'Application'.

## 5. Setting Quality / Speed



### no.5) Quality/Speed Control

The 3-level setup for the Quality/Speed is possible. Setup appropriate level what you desire. (As moving the button to the right, the quality gets better and the speed will be slower. Moving the button to the left, the quality gets worse and the speed will be gets faster.)

## 6. Setting Display Size



### no.6) Setting Display Size

From the left, each button indicates the display window size of 160 X 120, 320 X 240, 640 x 480 pixel, respectively. The larger the window size is, the slower the displaying speed is. Adjust the window size suitable for the purpose what you want.

## 7. Help

If there is any question about the program and camera, click the button no.7)Help to find the answer.

## 8. Viewing Video Album




Click the button no.8) Viewing video album to display video album. This window allows you

to look the captured video briefly. Double click any one displayed on the video album to play captured video. (When clicking the right button of the mouse. The menu (such as View, Delete, and Save As) will be appeared. The menu 'View' is used to play the video, the menu 'Delete' is used to remove it, and the menu 'Save As' is used to copy the selected video to the other location.)

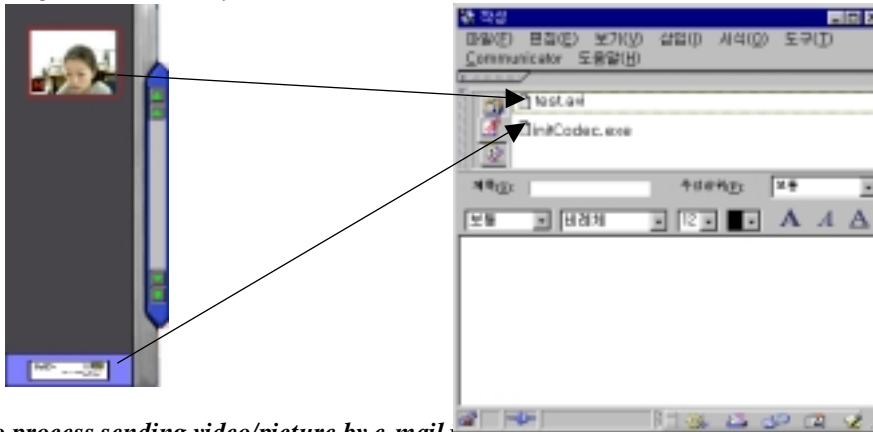
#### 9. Viewing Album of Still Images

Click the button no.9) Viewing Still Image to display still image album. The window allows you to look still images briefly. Double click any picture to see or edit (Need the image editing program).

#### 10. Exit

The button  will stop the running program and exit it.

#### 11. Sending Video/Picture by e-mail



**How to process sending video/picture by e-mail is as followings.**

1. Start running e-mail program.
2. To attach the file, drag or select video or image files which you want to send. ( Note: Only for the video data, you must attach 'initCodec' and send it together that is needed to play the video by the receiver. But for sending the still images, no need attach 'initCodec'. )