

Zip-around iPad mini Stand Case with Bluetooth Keyboard

Protection with wireless convenience

For
iPad mini



Contents

Chapter 1 Product introduction

1.1 Specification	2
-------------------------	---

Chapter 2 Installation and charging procedures

2.1 Charging instruction	3
2.2 Installation procedures for iPad, iPhone, iPod Touch & iPad mini	4
2.3 Installation procedures for Mac OSX	6

Chapter 3 Compatibility

3.1 Special function keys	9
3.2 Switching language	9

FAQ	10
-----------	----

Chapter 1 Product introduction

1.1 Specification

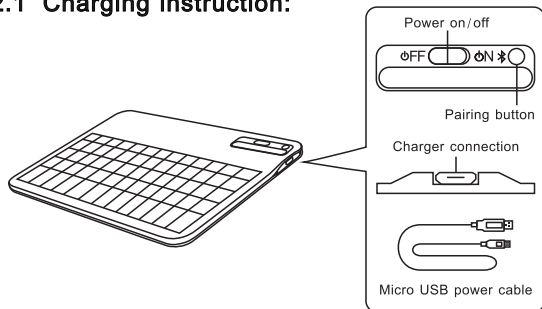


P/N	KB-IM1-NLZABK-02 (En) / KB-IM1-NLZABK-04 (Ru)
Dimension	175 x 230 x 35 mm
Weight	530 g
Bluetooth	Bluetooth 3.0
Key Count	59 Keys
Construction of Keyboard	Scissord type
Life expectancy	12 months
Pressure point	2.1 mm
Transmission frequency	2400 – 2483 MHz
Power output	3.7 V / 500 mah
Power supply	5 V / 500 MA
Charging time	3 hours
Working time	200 hours
Standby time	210 days
Effective operation distance	10 m
Battery type	Build-in Lithium-ion rechargeable battery
Compatibility	iOS4.0 later / Mac OS 10.4 later
Certified	BQB、FCC、CE、ROSH

Please visit www.LUXA2.com for the latest product specification

Chapter 2. Installation and charging procedures

2.1 Charging instruction:



Compatible charging sources:



NoteBook USB port



Computer USB port



USB Power adapter



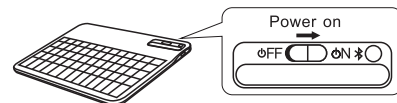
USB Power Bank

Battery-Charge Indicator

1. Connect the USB cable to a computer to start the charging process.
2. LED light indicator:
 - a. LED light is red when being charged.
 - b. LED light is off when charging is finished.
 - c. LED light flashes red when the battery level is low. (less than 10%)

2.2 Installation procedures for iPad, iPhone, iPod Touch & iPad Mini:

2.2.1



Turn the power switch on. (LED light turns blue for 3 seconds)

2.2.2



To turn the Bluetooth function on, press the pairing button. While the device is in search mode, the button will blink blue. The light turns off when the keyboard is connected.

2.2.3

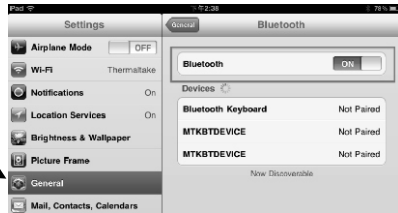


Select the 'Setting' app on your iOS device.

2.2.4

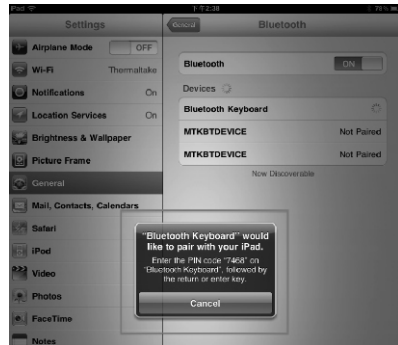


General



Choose "General" > "Bluetooth / ON".

2.2.5



- Select 'Bluetooth keyboard' under Devices and take note of the following instructions that appear.
- Using your bluetooth keyboard, enter the PIN code as shown on your iDevice and press enter to finish the pairing process.
 - *Re-enter the PIN code with your bluetooth keyboard when error message is shown.
 - *Check the battery level if your bluetooth keyboard does not connect.

2.2.6



Now the bluetooth keyboard is ready to use.

2.3 Installation procedures for Mac OSX:

For Mac OSX

2.3.1



Select "system preferences" from the start menu.

2.3.2



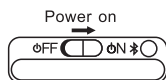
Choose "bluetooth" on "Internet & Wireless" list.

2.3.3



Choose "Set Up New Device..."

2.3.4.1



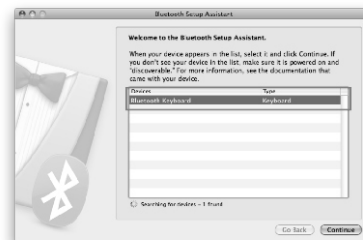
Turn the power switch of the keyboard to ON (LED light turns blue.)

2.3.4.2



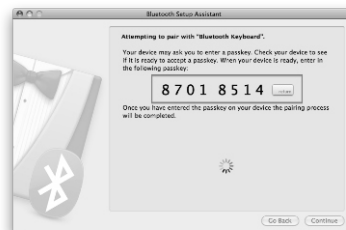
To turn the bluetooth function on, press the pairing button on the right. While the device is in search mode, the button will flash blue. The light turns off when the keyboard is connected.

2.3.5



Choose "Bluetooth keyboard", when it shows up on device list.

2.3.6



Use your bluetooth keyboard, enter the 8 PIN numbers that are shown on your Mac. Press enter on the bluetooth keyboard to finish the pairing process.

*Re-enter the PIN code when an error message is shown.

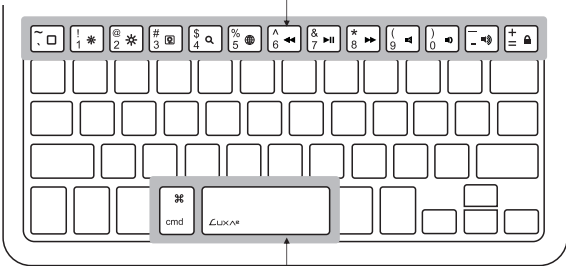
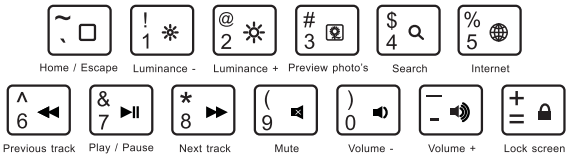
*Check the battery level if your keyboard does not connect.



Now the bluetooth keyboard is ready to use.

Chapter 3 Compatibility

3.1 Special function keys



3.2 Switching language



Cmd + Space
Press to switch language / Press longer to show language

FAQ

What is battery level indication?	LED light turns blue for 3 seconds and off: keyboard is turned on. LED light turns red: keyboard is being charged. Red light turns off when keyboard finishes charging. LED light flashes blue: low battery level LED light can't be turned on: battery level is zero.
Battery life according to recharge frequency (from empty to full)	85% storage capacity after 300 recharges. 60% storage capacity after 500 recharges.
How many days does a fully charged battery last when the keyboard is in sleep mode?	Around 100 days
How many more days can you use the keyboard continuously when battery low light starts to flash?	You can still use the keyboard continuously for 20 hours with 6-keys-persecond speed.
How long does the battery last when fully charged and the keyboard is off?	The battery lasts about 200 days.
How long does it take to charge the battery from empty to full?	Around 3 hours.
How long can you use the fully charged keyboard continuously with 6-keys-persecond speed?	About 10 days
Assuming the keyboard is used 8 hours a day and is in sleep mode during the rest of time, how many days can you use the keyboard for?	About 15 days.
Is the battery inside the keyboard changeable?	It is not recommended to change the keyboard battery yourself. If your battery malfunctions within six months of your purchase, we will fix or replace the battery for you.
Will the text on the keyboard fall off?	We have gone through strict quality control and usability test. Under normal daily 8-hour-period usage, product's life expectancy is more than 1 year.
How long does it take for the Bluetooth Keyboard to go into sleep mode?	After keyboard not being used for 25 mins, it will go into sleep mode automatically. Press any key to wake up the keyboard.
What is the range of Bluetooth?	Bluetooth wireless technology in its base implementation supports a range of 10 meters (33 feet).

Company: Kingrain International Group (HK) Co., Ltd.

Name: Leather case with Bluetooth keyboard

Model Number: KRLKB06-Luxa2

FCC ID: PGI-KRLKB06

This device complies with Part 15 of the FCC Rules. Operation is subject to the following two conditions: (1) this device may not cause harmful interference, and (2) this device must accept any interference received, including interference that may cause undesired operation.

Changes or modifications not expressly approved by the party responsible for compliance could void the user's authority to operate the equipment.

Note: This equipment has been tested and found to comply with the limits for a Class B digital device, pursuant to part 15 of the FCC Rules. These limits are designed to provide reasonable protection against harmful interference in a residential installation. This equipment generates, uses and can radiate radio frequency energy and, if not installed and used in accordance with the instructions, may cause harmful interference to radio communications. However, there is no guarantee that interference will not occur in a particular installation. If this equipment does cause harmful interference to radio or television reception, which can be determined by turning the equipment off and on, the user is encouraged to try to correct the interference by one or more of the following measures:

- Reorient or relocate the receiving antenna.
- Increase the separation between the equipment and receiver.
- Connect the equipment into an outlet on a circuit different from that to which the receiver is connected.
- Consult the dealer or an experienced radio/TV technician for help.