

EMC Department

Test Of: Red-M (Communications) Ltd.
3000AS Wireless Internet Server
with Access Server External Aerial (3000-501)
To: F.C.C. Part 15: 1998 Subpart C (Intentional Radiators). Section 15.247

Appendix 4. Graphical Test Results (Part 1a)

This appendix contains the following graphs:

| Graph Reference Number | Title |
|-------------------------------|---|
| GPH\41715ETF04\001 | Radiated Emissions, Hopping all frequencies (2.39 GHz to 2.49 GHz) Section 15.247 (a) |
| GPH\41715ETF04\002 | Radiated Emissions, Hopping all frequencies (2.438577451 GHz to 2.440974999 GHz) Section 15.247 (a) |
| GPH\41715ETF04\003 | Radiated Emissions, Hopping all frequencies (2.43675 GHz to 2.43925 GHz) Section 15.247 (a) |
| GPH\41715ETF04\004 | Radiated Emissions, Hopping all frequencies (2.4355 GHz to 2.4405 GHz) Section 15.247 (b) |
| GPH\41715ETF04\005 | Radiated Emissions, Hopping all frequencies (2.39 GHz to 2.41 GHz) Section 15.247 (c) |

RADIO FREQUENCY INVESTIGATION LTD.

TEST REPORT

Graphical Test Results

S.No. RF/EMCB1/RP41715C

Issue Date: 28 February 2001

EMC Department

Test Of: Red-M (Communications) Ltd.

3000AS Wireless Internet Server

with Access Server External Aerial (3000-501)

To: F.C.C. Part 15: 1998 Subpart C (Intentional Radiators). Section 15.247

This page has been left intentionally blank.

LVLOFF



Date 05.Dec.'00 Time 14:20:58

Ref.Lvl 13.60 dBm

Marker 7.03 dBm

2.4371 GHz

Res.Bw

TG.Lvl

CF.Stp

100 kHz [imp]

0 dBm

10.000 MHz

Vid.Bw

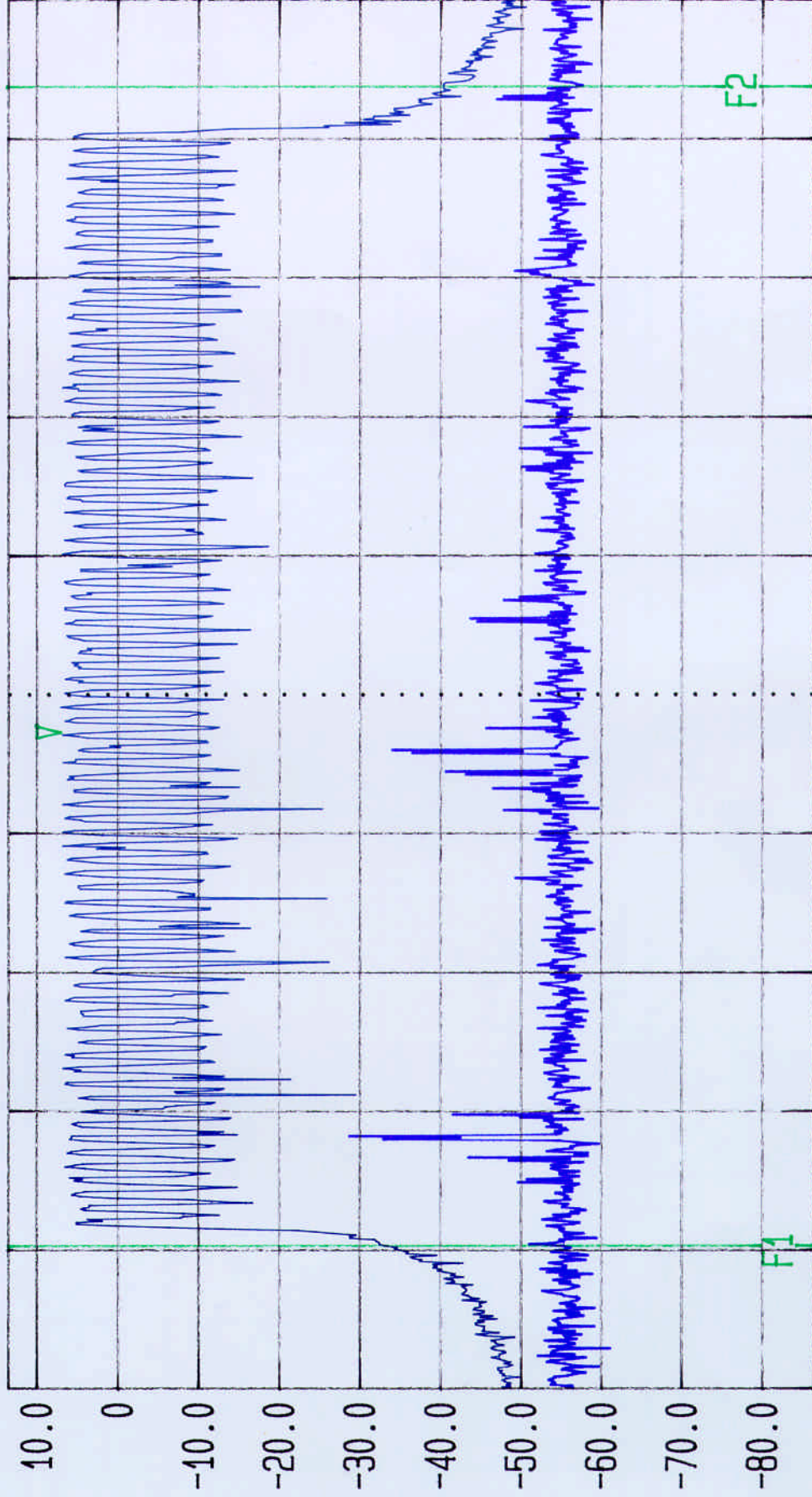
RF.Att

Unit

1 MHz

10 dB

[dBm]



Start

2.39 GHz

Span

100 MHz

Center

2.44 GHz

Sweep

80 ms

Stop

2.49 GHz

Tested By RFI for RED M.

Spec: FCC Part 15.247 (a)

EUT: 3000AS

Opcond: Hopping all Frequencies

GPH: 41715/04/04/001

ENG: PG



LVLOFF

Date 05.Dec.'00 Time 14:32:14

Ref.Lvl Delta

13.60 dBm

0.71 dB

998.9 kHz

Res.Bw

TG.Lvl

CF.Stp

10 kHz [imp]

Off

239.754 kHz

Vid.Bw

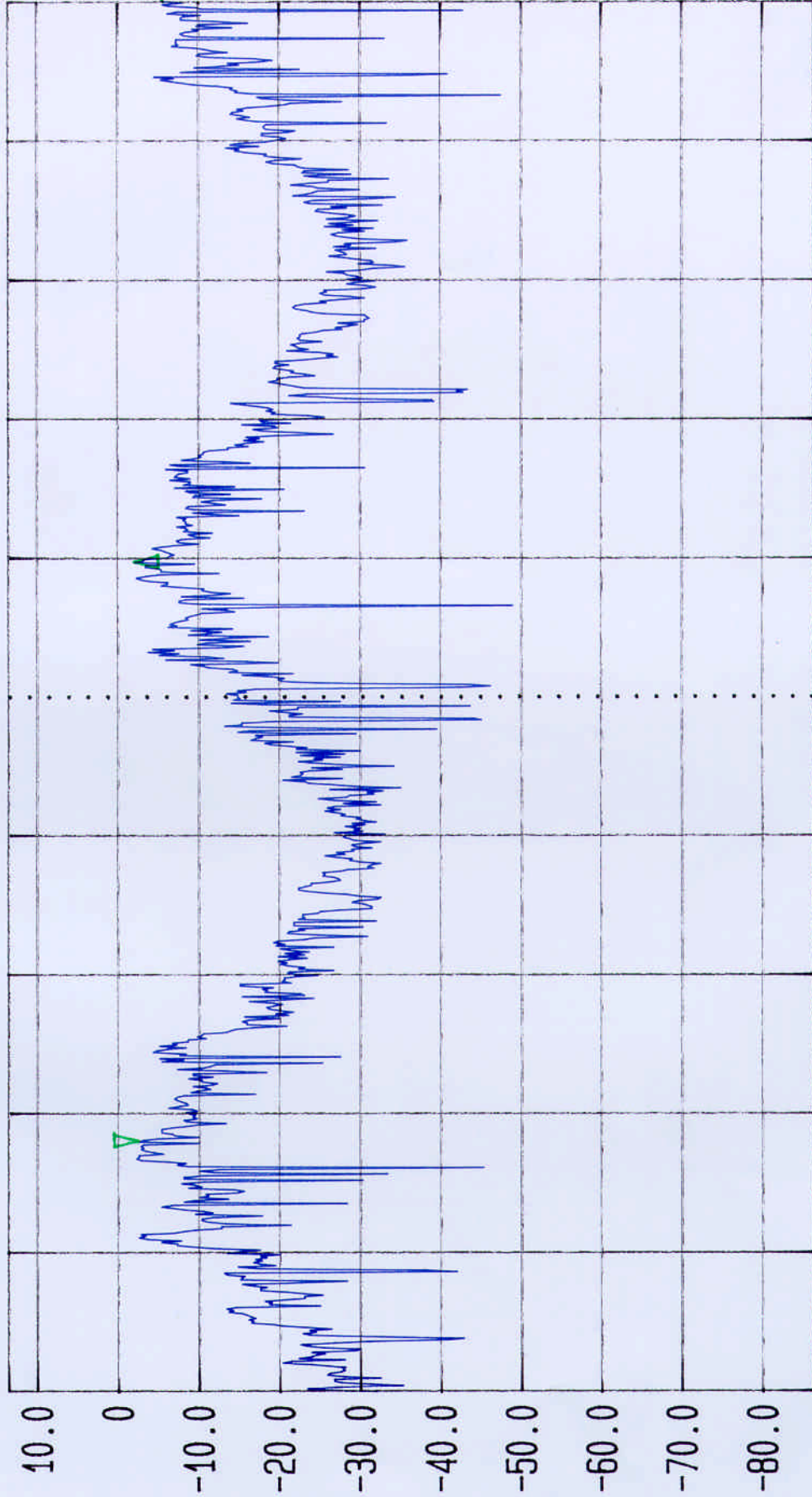
RF.Att

Unit

100 kHz

10 dB

[dBm]



Start

2.438577451 GHz

Span

2.39754 MHz

Center

2.439776225 GHz

Sweep

160 ms

Stop

2.440974999 GHz

Tested By RFI for RED M.

Spec: FCC Part 15.247 (a)

EUT: 3000AS

Opcond: Hopping all Frequencies

GPH:

41715/04/04/002

ENG: PG



LVLOFF

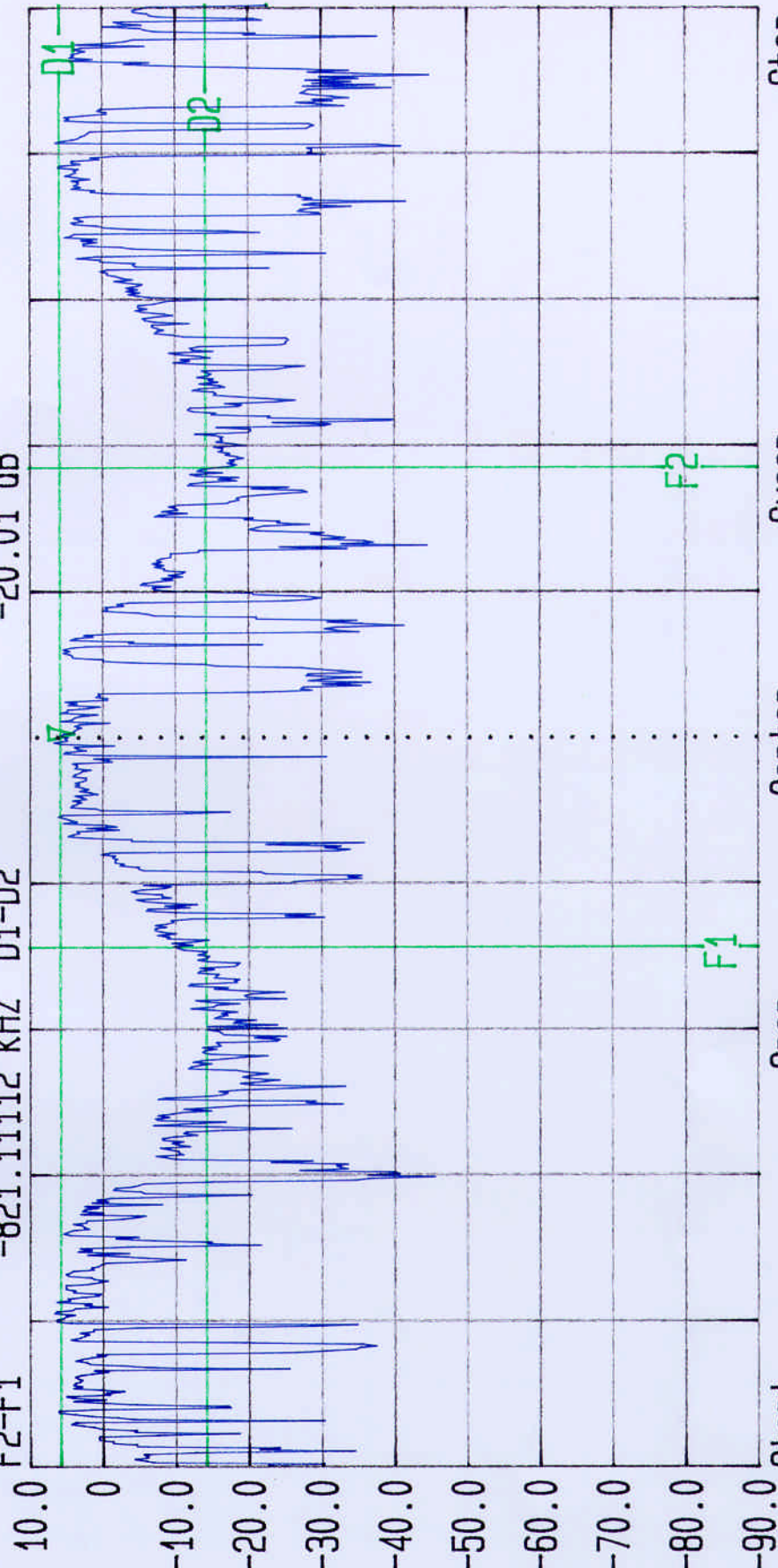
Date 05.Dec.'00 Time 15:20:45

Ref.Lvl 10.00 dBm
Marker 4.04 dBm
2.438005 GHz

Res.Bw 100 kHz [imp]
TG.Lvl Off
CF.Stp 250.000 kHz

Vid.Bw 1 MHz
RF.Att 10 dB
Unit [dBm]

F1 2.437638888888 GHz D1
F2 2.438460000000 GHz D2
F2-F1 -821.11112 kHz D1-D2



Start 2.43675 GHz
Span 2.5 MHz

Center 2.438 GHz

Sweep 20 ms

Stop 2.43925 GHz

Tested BY RFI for RED M.
Spec: FCC Part 15.247 (a)

EUT: 3000AS
Opcond: Hopping all Frequencies

GPH: 41715/04/04/003
ENG: PG



LVLOFF

Date 05.Dec.'00 Time 15:27:22

Ref.Lvl 10.00 dBm

Marker 7.34 dBm

2.438166 GHz

Res.Bw 1 MHz [imp]

off

500.000 kHz

Vid.Bw 3 MHz

RF.Att 10 dB

[dBm]

F1

OFF

D1

7.34 dBm

-12.66 dBm

-20.00 dB

F2-F1

OFF

D2

7.34 dBm

-12.66 dBm

-20.00 dB

D1-D2

7.34 dBm

-12.66 dBm

-20.00 dB

10.0

0

-10.0

-20.0

-30.0

-40.0

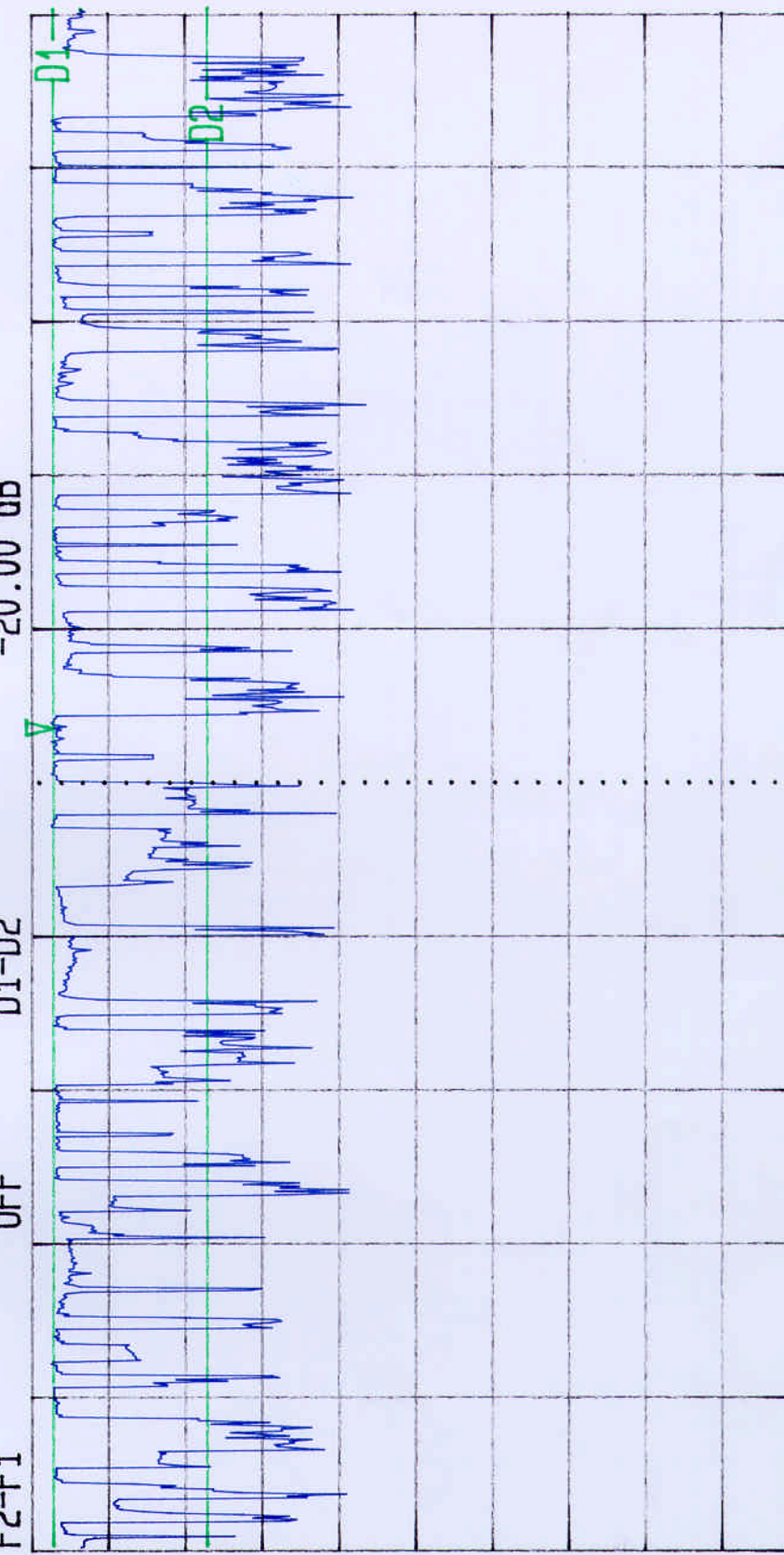
-50.0

-60.0

-70.0

-80.0

-90.0



Start

2.4355 GHz

Span

5 MHz

Center

2.438 GHz

Sweep

20 ms

Stop

2.4405 GHz

Tested BY RFI for RED M.

Spec: FCC Part 15.247 (b)

EUT: 3000AS

Opcond: Hopping all Frequencies

GPH: 41715/04/04/004

ENG: PG

LVLOFF



Date 05.Dec.'00 Time 15:33:10

Ref.Lvl 10.00 dBm

Marker 6.30 dBm

2.40186 GHz

Res.Bw 1 MHz [imp]

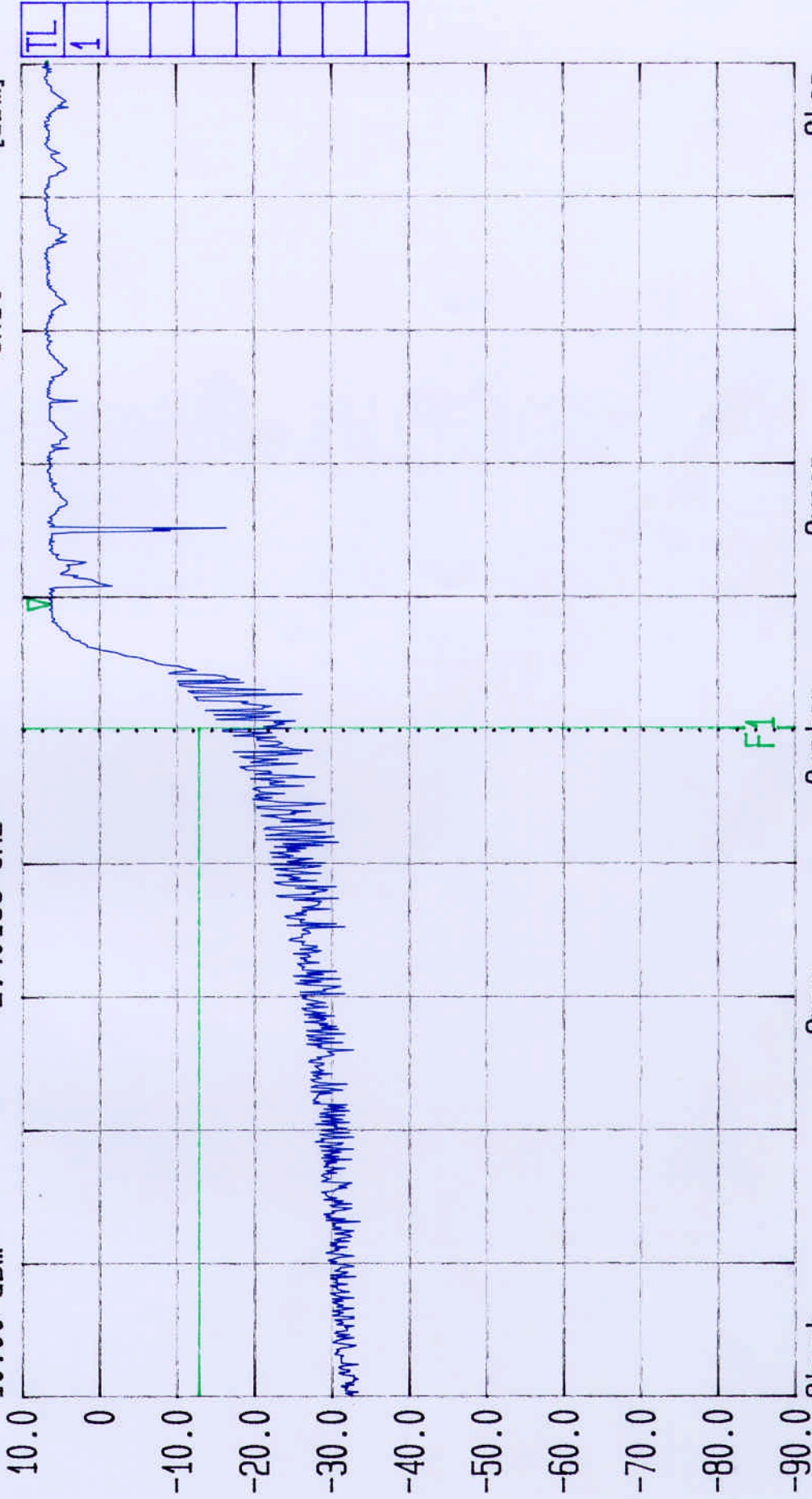
TG.Lvl off

CF.Stp 2.000 MHz

Vid.Bw 3 MHz

RF.Att 10 dB

Unit [dBm]



Start 2.39 GHz

Span 20 MHz

Center 2.4 GHz

Sweep 20 ms

Stop 2.41 GHz

Tested By RFI for RED M.
Spec: FCC Part 15.247 (c)

EUT: 3000AS
Opcond: Hopping all Frequencies

GPH: 41715/04/04/005
ENG: PG