

Broadband Internet Sharing Device(IPGW410)

User Manual

S & S Global Net Inc.

Quick installation provides Quick & easy Administration for IPGW410'S Users,
If something is wrong with IPGW410'S Installation refer to User Manual.

Installation environment

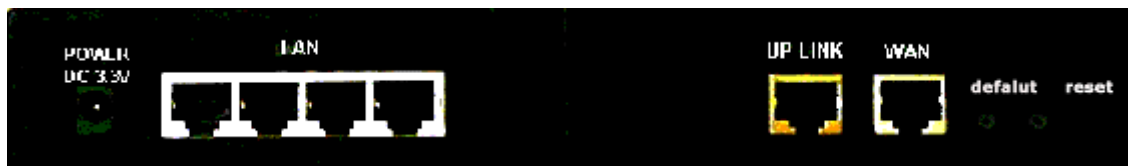
- PC: IBM, Macintosh or Unix(Sun Linux) Which have a practicable Netscape Navigator 4.0 or later, or Microsoft Internet
- Internet terminal equipment : Internet appliance (i-settop Box, IP phone etc) with an installed ethernet terminal(10Base-T)
- ID & Password : the ID and password provided by your ISP
- Line & Modem : One external xDSL/cable modem with Ethernet terminal (10Base-T) or a dedicated(leased) line with Ethernet terminal(10Base-T)
- CABLE : UTP Cable for connecting to another PCs

Installation Procedure

Connecting Everything Together & Booting UP (Hardware Installation)



Front of the IPGW410®



Rear of the IPGW410®

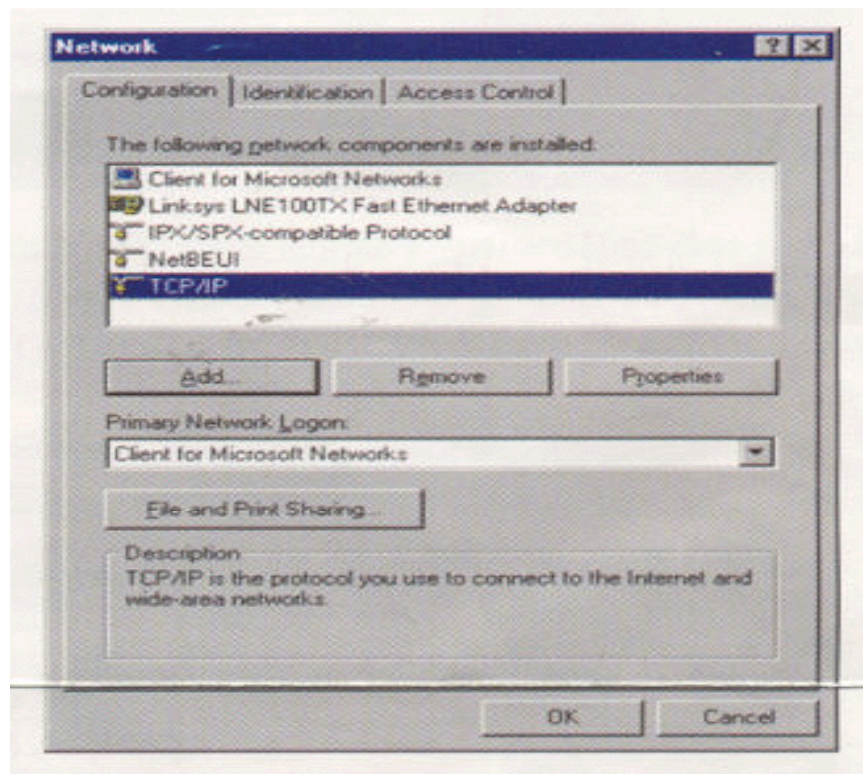
1. Connect the UTP cable from your xDSL/cable modem to the WAN port on the rear of the IPGW410®

2. Connect the UTP cable from your PCs' Ethernet port(LAN card) to one of the LAN ports on the rear of the IPGW410®
3. If you need, expand your network by connecting the hub to Uplink port of the IPGW410®
4. Connect the power adapter to the power port on the rear of the IPGW410

Configuring Your PCs to connect to the IPGW410®
(Windows95 and 98 machines)

5. In the Windows

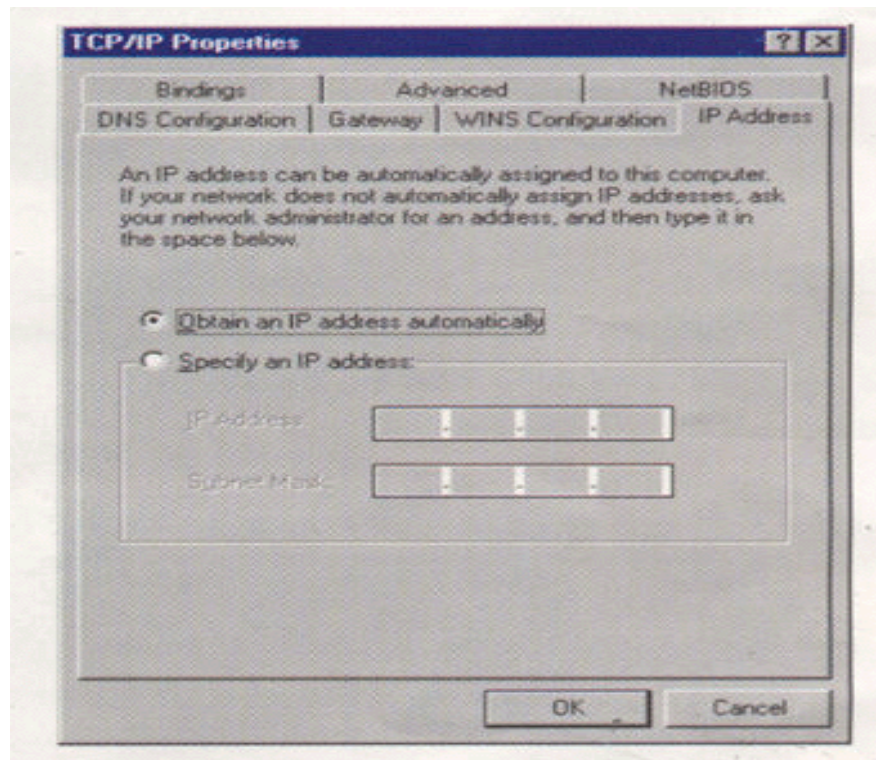
Click the **Start** button, select **Settings**, then **Control Panel** and double click the **Network** icon



6. In the configuration Windows

Select the **TCP/IP Protocol** line and click the **Properties** button

Notice> select the TCP/IP that has been associated with your network card or adapter



7. In case of selecting **Specify an IP address**, input private IP Address and Subnet mask address

*Notice > In case of using **Obtain an IP address automatically**, all of yours PCs are configured automatically*

8. Type the **IP Address** of 192.168.10.xxx
9. Type **Subnet Mask** of 255.255.255.0
Click **OK** button
10. Click the **Gateway** tab
11. Type 192.168.10.1 in the **New Gateway field** then click the '**ADD**' button,
Click OK button
After close your PCs windows, restart your PCs

Basic set up and Configuring the IPGW410®

12. After the your PC restarts, open your Web browser
Type <http://192.168.10.1> in the browser's address box.
Press Enter Key
You will see the following screen



Enter Network password

Please type your name and password

Site : 192.168.10.1
 Realm GoAhead

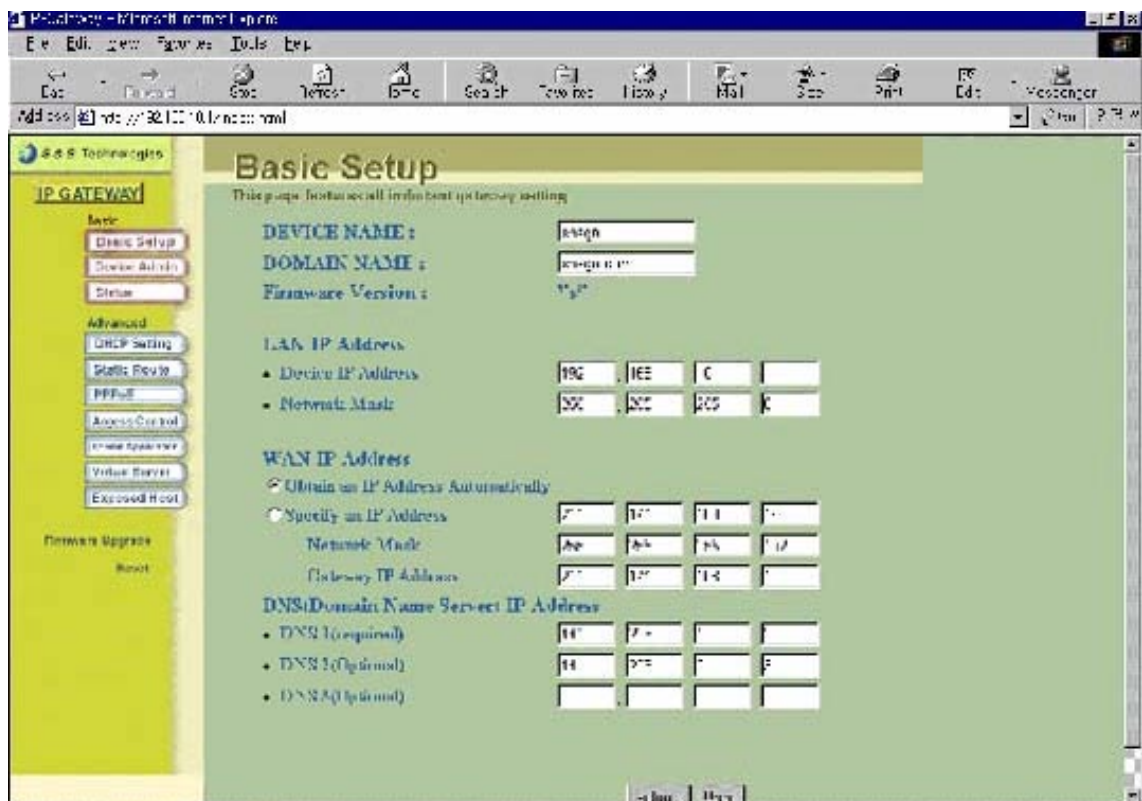
User name(U):

Password(P):

☐ Save this password in your password list

OK Cancel

13. Leave the User Name field empty but type “**admin**” in the password field
 Click the **OK** button. You will see the IPGW410®’s the **Basic set up** page
14. The **Basic setup** screen is for using IPGW410®



Basic Setup

This group contains all important ip gateway setting

DEVICE NAME :

DOMAIN NAME :

Firmware Version : V3.0

LAN IP Address

- Device IP Address: 192.168.10.1
- Network Mask: 255.255.255.0

WAN IP Address

☒ Obtain an IP Address Automatically

☐ Specify an IP Address

Network Mask: 255.255.255.0

Gateway IP Address: 192.168.10.1

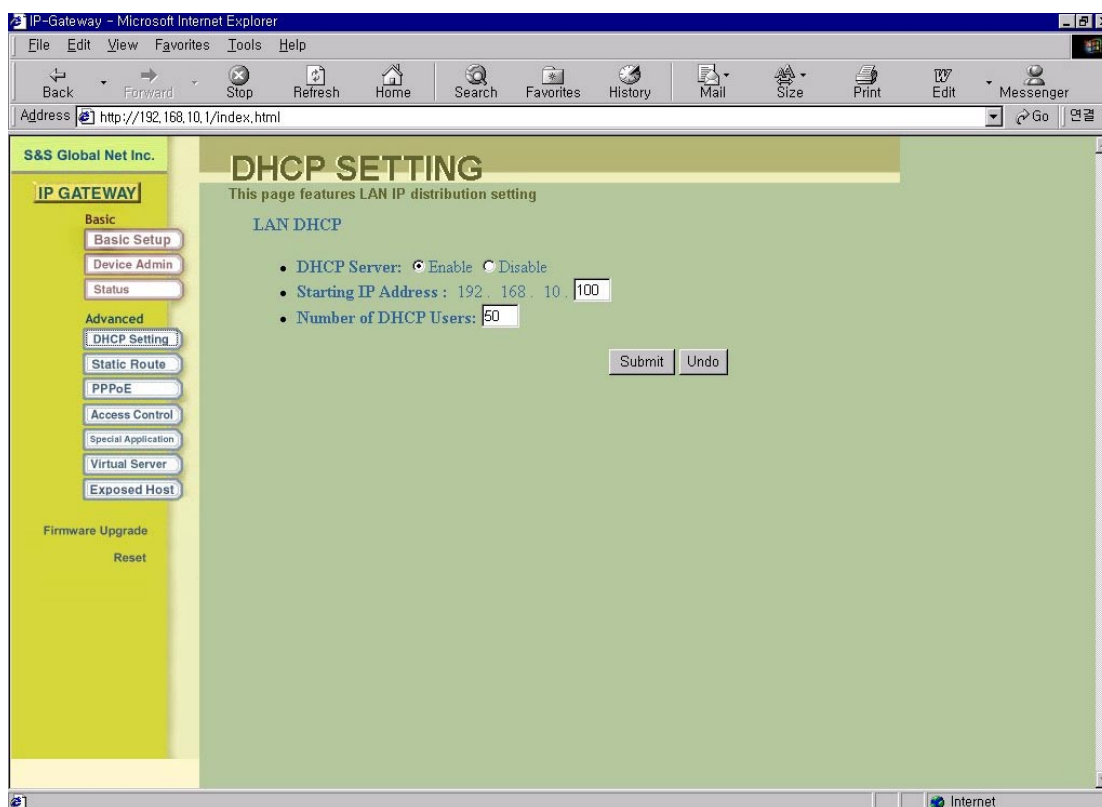
DNS(Domain Name Server) IP Address

- DNS1(Optional): 192.168.10.1
- DNS2(Optional): 192.168.10.1
- DNS3(Optional): 192.168.10.1

- The **Device Name/Domain Name** remain unchanged
- The **Device IP Address/Network Mask** in the **LAN IP Address** is IP

Address of IPGW410® as it seen on the internal LAN. The default value is 192.168.10.1 for IP and 255.255.255.0 for Subnet Mask.

- WAN IP Address
 1. If you are using dynamic IP address, Select the **Obtain an IP Address Automatically**
 2. If you are using static IP address, Select the **Specify an IP Address** and then type values, **IP Address**, **Network Mask**, **Gateway IP Address** are assigned by your ISP.
- DNS(Domain Name Server) IP Address
 - Type DNS1(required), DNS2(optional)
- When you have properly configured the Basic set up page, click the **Submit** button. IPGW410® automatically reboot.



15. Click the DHCP setting on the left menu. You will see the following screen

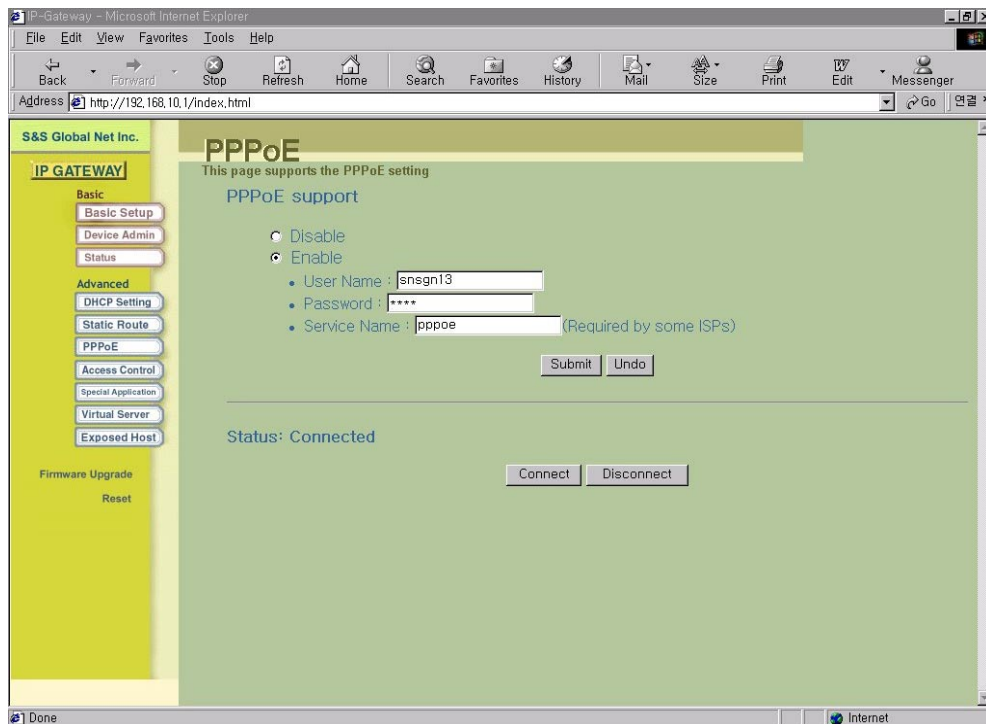
Network Dynamic IP address user

- Click the **Enable** button to use DHCP Server
- Starting IP Address : Enter a starting IP Address number
- Number of DHCP Users : Enter a number of DHCP users
- Click the **Submit** button

Network Static IP address users

- Click the **Disable** button
- Click the **Submit** button

16. Click the PPPoE on the left menu. You will see the following page



Dynamic private IP Address User

- Click the **Enable** button
- Type **User Name** and **Password**

- Type “PPPoE” in the **Service name** blank
- Click the **Submit** button

Notice > The status get settuped Disconnected in the first setup but You will make it a rule to get settuped connected

Static private IP Address Users

- Don't need to setup PPPoE

17. You have completed the client settings