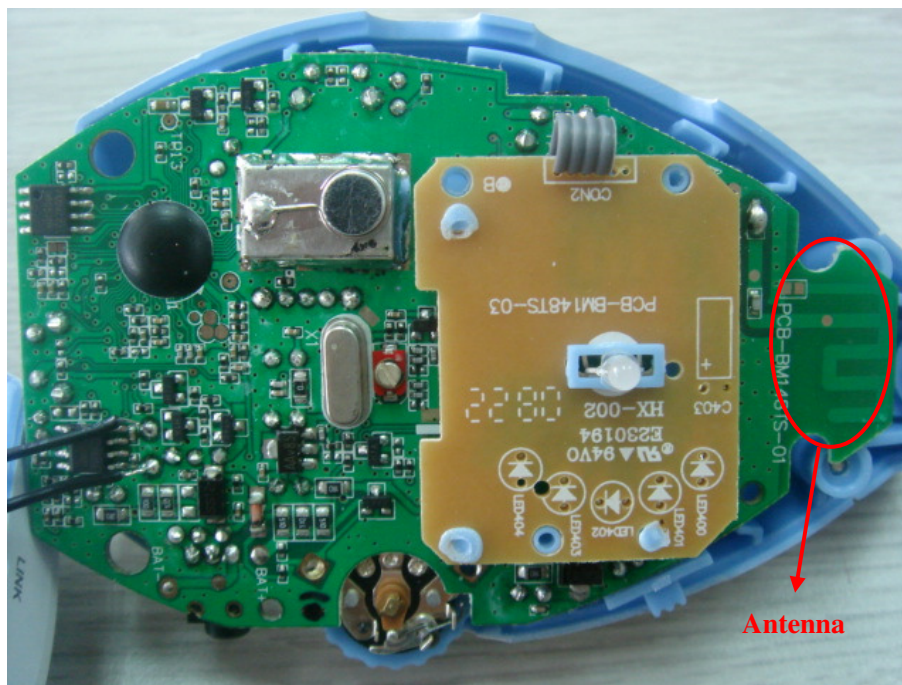


OPERATIONAL DESCRIPTION (baby phone with LED)

1. Supply voltage: 4.5Vdc from batteries
2. Frequency of operation: 2403.600~2479.482 MHz
3. Number of channels: 89
4. Antenna type: Printed Antenna
5. Antenna gain: 0dBi
6. Antenna connector: Soldered on PCB
7. Introduction of the device: The device is 2.4GHz Digital Baby Phone used FHSS technology
8. Related antenna connector photo:



(baby phone with LCD)

1. Supply voltage: 4.5Vdc from batteries
2. Frequency of operation: 2403.600~2479.782 MHz
3. Number of channels: 89
4. Antenna type: Printed Antenna
5. Antenna gain: 0dBi
6. Antenna connector: Soldered on PCB
7. Introduction of the device: The device is 2.4GHz Digital Baby Phone used FHSS technology
8. Related antenna connector photo:

