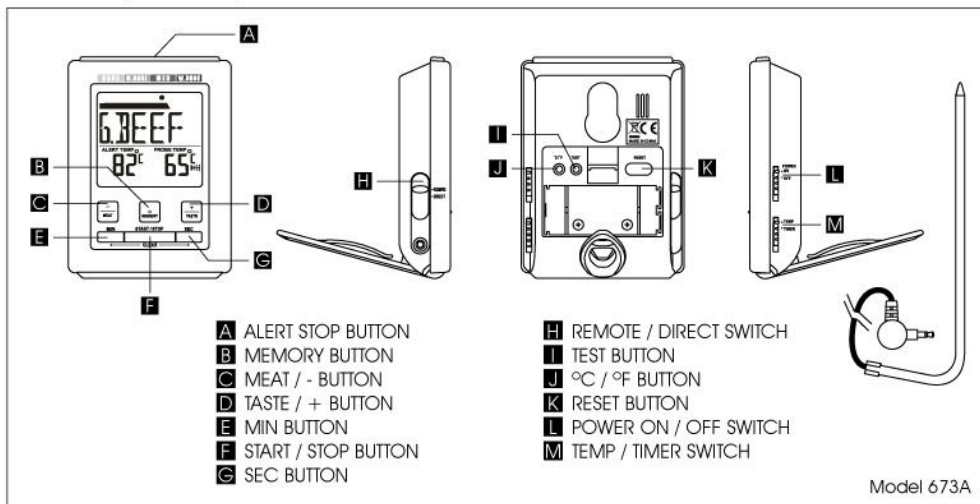


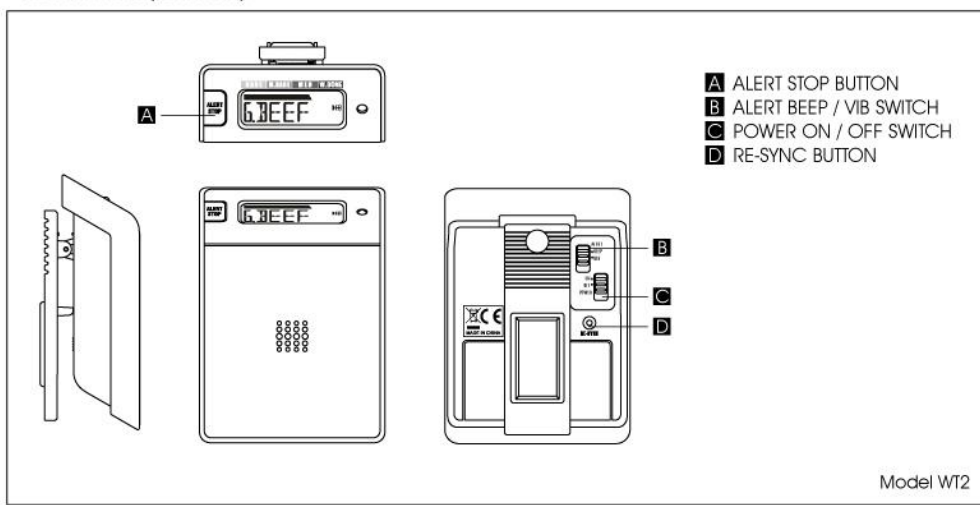
INSTRUCTION MANUAL

LOCATIONS OF CONTROL

Main Unit (Transmitter)



Remote Unit (Receiver)



BATTERY INSTALLATION

Main Transmitter Unit

- Open battery cover of the main Transmitter unit.
- Insert the 2 AAA batteries improper polarity (+) and (-) as indicated.
- Close the battery cover.

Remote Unit

- Open battery cover of the Remote unit.
- Insert the 2 AAA batteries improper polarity (+) and (-) as indicated.
- Close the battery cover.

Notes : Do not use old batteries or different batteries together.

Operation of RF Grill

1. Slide the POWER ON / OFF switch to ON position in Main transmitter unit
2. Make sure the Remote / DIRECT slide switch to REMOTE.
3. Make sure the TEMP / TIMER switch to TEMP
4. Select the meat you are going to cook by pressing the - / MEAT button. If the meat which you are going to cook is not on our list, please select PGM.
(Available meat: BEEF, PORK, CHICK, TURKY, VEAL, LAMB, HAM, DUCK, HAMBR, FISH, G.BEEF, G.PORK, G.CHICK, G.TURKY, G.VEAL, G.LAMB, PGM, and go to BEEF again.)
5. Select you desired doneness level by pressing the + / TASTE button.
6. Connect the probe to the main transmitter unit.
7. The probe temperature will appear on PROBE TEMP field on Main Transmitter unit.
8. Slide the POWER ON / OFF switch to ON position in Remote unit.- the LCD display will show the desired meat and doneness status on the remote unit.
9. Locate the transmitter somewhere away from a direct flame or oven door and insert the probe into the meat.
10. Locate the remote unit somewhere close to you or use the belt clip to keep the remote unit with you.
11. Slide the BEEP / VIB switch to Beep position in Remote unit
12. The first alert signal : "bi"+ LED flash+ PRE-ALERT indicate the meat under cook is close to your desired doneness (5F below your selected doneness).
13. The "bi bi bi bi" + LED flash ,the meat reach your desire doneness.
14. The continuous "bi" sound + LED flash + OVER COOK indicate if the meat under cook does not remove from the cooking surface after and the PROBE TEMP reach .
15. Power off the remote unit by sliding the POWER ON / OFF switch to OFF position after use.

Operation of Direct Grill

If you are very close to the cooking area please select the DIRECT grill:

1. Slide the POWER ON / OFF switch to ON position in Main transmitter unit.
2. Make sure the Remote / DIRECT slide switch to DIRECT.
3. Select the meat you are going to cook by pressing the - / MEAT button. If the meat which you are going to cook is not on our list, please select PGM.
(Available meat: BEEF, PORK, CHICK, TURKY, VEAL, LAMB, HAM, DUCK, HAMBR, FISH, G.BEEF, G.PORK, G.CHICK, G.TURKY, G.VEAL, G.LAMB, PGM, and go to BEEF again.).
4. Select your desired doneness level by pressing the + / TASTE button.
5. Connect the probe to the Main Transmitter unit.
6. The probe temperature will appear on PROBE TEMP field on Main Transmitter unit.
7. Locate the main transmitter unit somewhere away from the direct flame and insert the probe into the meat.
8. The first alert signal "bi" + PRE-ALERT indicates the meat to cook is close to your desired doneness (one level below your selected doneness).
9. The "bi bi bi bi" + Temp Alert digital and probe temp digital are flash the meat has reached your desired doneness.
10. The continuous "bi" sound OVER COOK alert will sound if the meat to cook is not removed from the cooking surface after and the PROBE TEMP is one level above your level of selected doneness.
11. Power off the Main transmitter unit by sliding the POWER ON / OFF switch to OFF position.

User Preference and "PGM" Setting

You can set the default temperature for any meat and doneness available as well as the PGM selection for the meat which is not on the display.

1. Select your desired meat and doneness by pressing the MEAT and TASTE button or press MEAT unit USER is displayed.
2. Press and hold the MEMORY until the ALERT TEMP reading is flashing.
3. Press MEAT to lower or TASTE to increase your desired Temperature.
4. Press MEMORY again to complete the setting.
5. Repeat steps 1 to 4 for any other meat and / or doneness.
6. Press MEMORY to recall any preference.

Note : When you press MEAT or TASTE after you set your preference, the ALERT TEMP will reset to the default built-in temperature. You must press MEMORY to recall your own setting except PGM.

ALERTING SIGNAL

Pre-Alert

Slide the BEEP / VIB switch to Beep position in Remote unit.

The Remote unit will be "bi" sounds in one second, also the RED back light will flash at a slow rate, the display will show pre-alert icon.

Slide the BEEP / VIB switch to shake position in Remote unit.

The Remote unit will be one vibration in one second, also the RED back light will flash at a slow rate, the display will show pre-alert icon.

The Main unit will be "bi" sounds in one second, the display will show pre-alert icon.

Done

Slide the BEEP / VIB switch to Beep position in Remote unit.

The Remote unit will be four "bi" sounds in one second, also the RED back light will flash at a high rate.

Slide the BEEP / VIB switch to VIB position in Remote unit.

The Remote unit will be four vibration in one second, also the RED back light will flash at a high rate.

The Main unit will be four "bi" sounds in one second, the display will show Alert Temp digital & Probe Temp digital will be flash.

Over Cook

Slide the BEEP / VIB switch to VIB position in Remote unit.

The Remote unit will be Continuous eight "bi" sounds in one second, also the RED back light will flash at a highest rate, The OVER COOK icon will show on display.

Slide the BEEP / VIB switch to VIB position in Remote unit.

The Remote unit will be Continuous eight vibration in one second, also the RED back light will flash at a highest rate, The OVER COOK icon will show on display.

The Main unit will be Continuous eight "bi" sounds in one second, also the RED back light will flash at a highest rate, The OVER COOK icon will show on display.

INDEPENDENT COUNT-UP AND COUNT-DOWN TIMER

Operation for Count-Up Timer

1. Slide the TEMP / TIMER switch to TIMER position in Main transmitter unit.
2. Press START / STOP button to wake up the count up timer.
3. The timer will start to count up the UP arrow will ON.
4. Press START / STOP to stop the timer.
5. Press both of MIN and SEC to clear the timer.

Note : Maximum count up time is 99 minutes 59 seconds.

Operation of Count-Down Timer

1. Slide the TEMP / TIMER switch to TIMER position in Main transmitter unit.
2. Press MIN or Sec to set your desired count down time.
3. Press START / STOP to start the count down timer, the DOWN arrow will turn ON.
4. When the count down time is up, a four "bi" alert signal will sound and TIME'S UP icon will flash, The timer will switch to count up to indicate how long does it pass the count down time.
5. Press START / STOP to stop the alert signal and TIMER'SUP count up timer.

Note : Maximum count down time 99 minutes 59 seconds.

Stopping the Cooking Alert

Pressing the ALERT STOP / OFF button when the unit is alerting will stop it.
Press and Hold the ALERT STOP / OFF button when the unit is alerting will be off it.

°C / °F Reading

Pressing the °C / °F button will toggle the °C / °F reading.

Re-Sync

Press Re-Sync button if :

1. There is an unsuccessful connection after power up, OR
2. After 3 minutes search, The Remote unit show the ----- on display.

Low Battery Indication

Low battery icon will be turned on on ALERT TEMP and LCD display of the Remote unit if the battery of transmitter is low, please replace a new one.

Disposal of Your Old Product

Your product is designed and manufactured with high quality materials and components, which can be recycled and reused.

When this crossed-out wheeled bin symbol is attached to a product it means the product is covered by the European Directive 2002/96/EC.



Please inform yourself about the local separate collection system for electrical and electronic products.

Please act according to your local rules and do not dispose of your old products with your normal household waste. The correct disposal of your old product will help prevent potential negative consequences for the environment and human health.

Disposal of Flat Batteries / Accumulators

You, as the end user, are legally obliged (**Battery Ordinance**) to return all flat batteries and rechargeable batteries. **Disposal in the household waste is prohibited.**

"European Directive 2006/66/EC" Batteries, including rechargeable batteries, which contain hazardous substances are marked by symbols which indicate the prohibition of disposal in the household waste. The designations for the heavy metals concerned are as follows :

Cd = cadmium, **Hg** = mercury, **Pd** = lead. You can return flat batteries / rechargeable batteries free of charge to the collection points in your community or anywhere else where batteries / rechargeable batteries are sold.

You thus fulfil your statutory obligations and help protect the environment.



Caution

Danger of explosion if battery is incorrectly replaced. Replace only with the same or equivalent type, please refer to the engraved battery marks inside the battery compartment for the correct battery polarity (+) and (-).

Model: WT2

FCC ID:PEQA240900411

Model: 673A

FCC ID:PEQ673A900411

This device complies with Part 15 of the FCC Rules. Operation is subject to the following two conditions:

- (1) this device may not cause harmful interference, and (2) this device must accept any interference received, including interference that may cause undesired operation.

Changes or modifications not expressly approved by the party responsible for compliance could void the user's authority to operate the equipment.

NOTE :

This equipment has been tested and found to comply with the limits for a Class B digital device, pursuant to part 15 of the FCC Rules. These limits are designed to provide reasonable protection against harmful interference in a residential installation. This equipment generates, uses and can radiate radio frequency energy and, if not installed and used in accordance with the instructions, may cause harmful interference to radio communications. However, there is no guarantee that interference will not occur in a particular installation. If this equipment does cause harmful interference to radio or television reception, which can be determined by turning the equipment off and on, the user is encouraged to try to correct

the interference by one or more of the following measures:

- Reorient or relocate the receiving antenna.
- Increase the separation between the equipment and receiver.
- Connect the equipment into an outlet on a circuit different from that to which the receiver is connected.
- Consult the dealer or an experienced radio / TV technician for help.