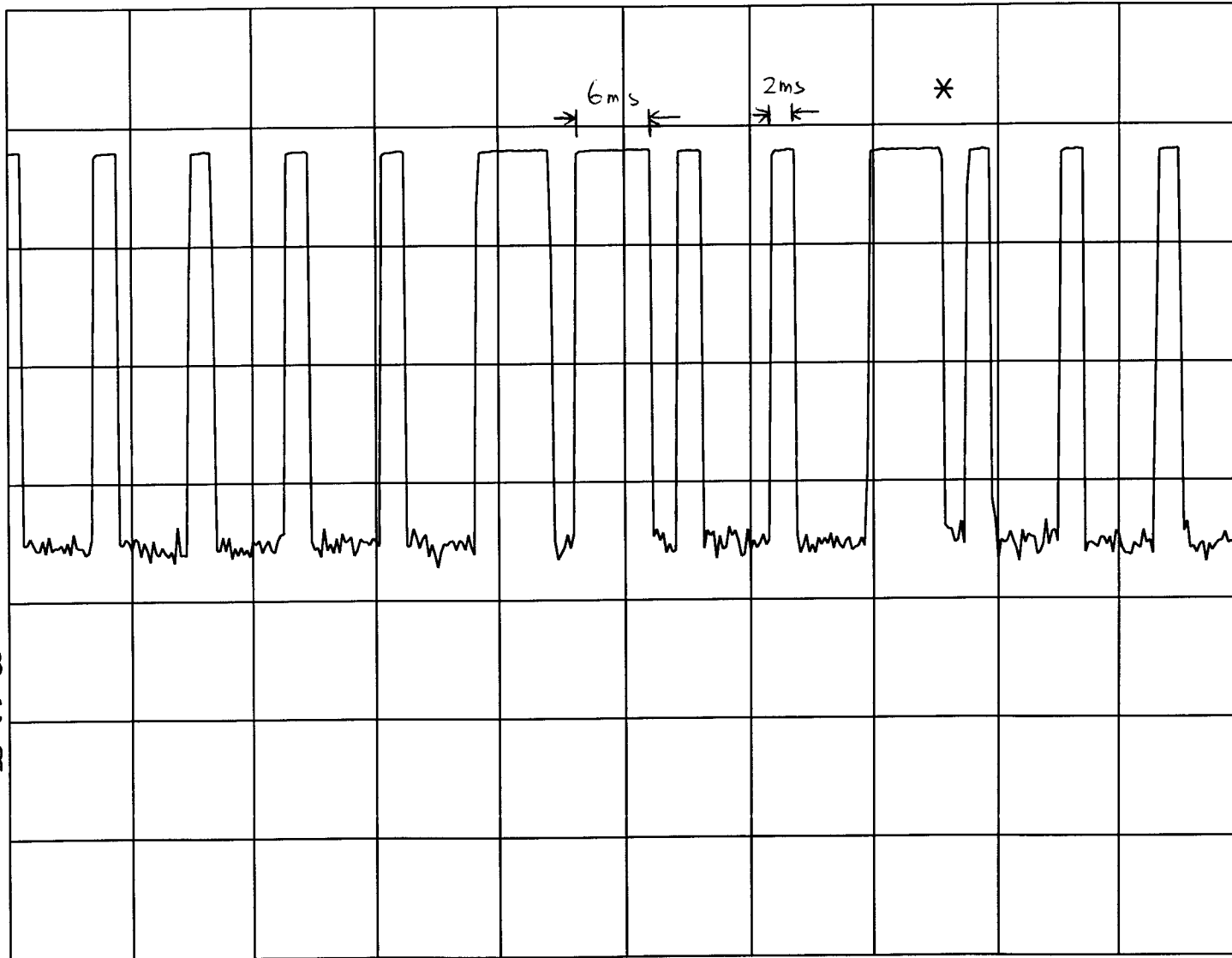


hp

REF -24.0 dBm

AT 10 dB

PEAK
LOG
10
dB/



Worst Case:

All $\frac{6ms}{2ms}$

$$\text{Duty Cycle} = \frac{6 \times 12 + 4}{100}$$
$$= \frac{76}{100} = 0.76$$

$$\text{Average Factor} = -2.4 \text{ dB}$$

WA SB
SC VC
CORR

CENTER 433.970 MHz

#RES BW 3.0 MHz

#VBW 3 MHz

SPAN 0 Hz

#SWP 100 msec

hp

REF -24.0 dBm

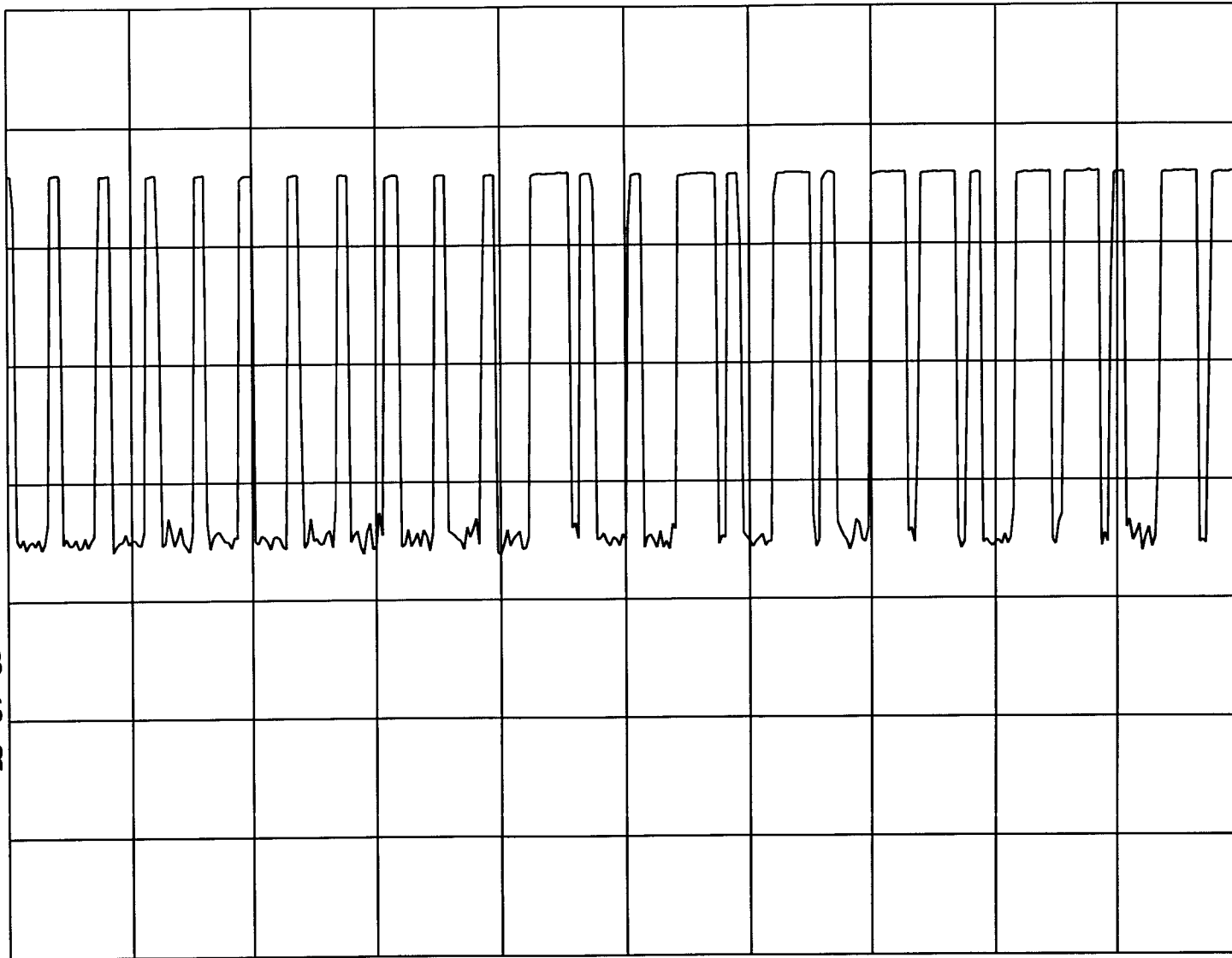
AT 10 dB

PEAK

LOG

10

dB/



WA SB

SC VS

CORR

CENTER 433.970 MHz

SPAN 0 Hz

#RES BW 3.0 MHz

#VBW 3 MHz

#SWP 200 msec

hp

MKR 920.00 msec

REF -9.0 dBm

AT 10 dB

-33.61 dBm

PEAK

LOG

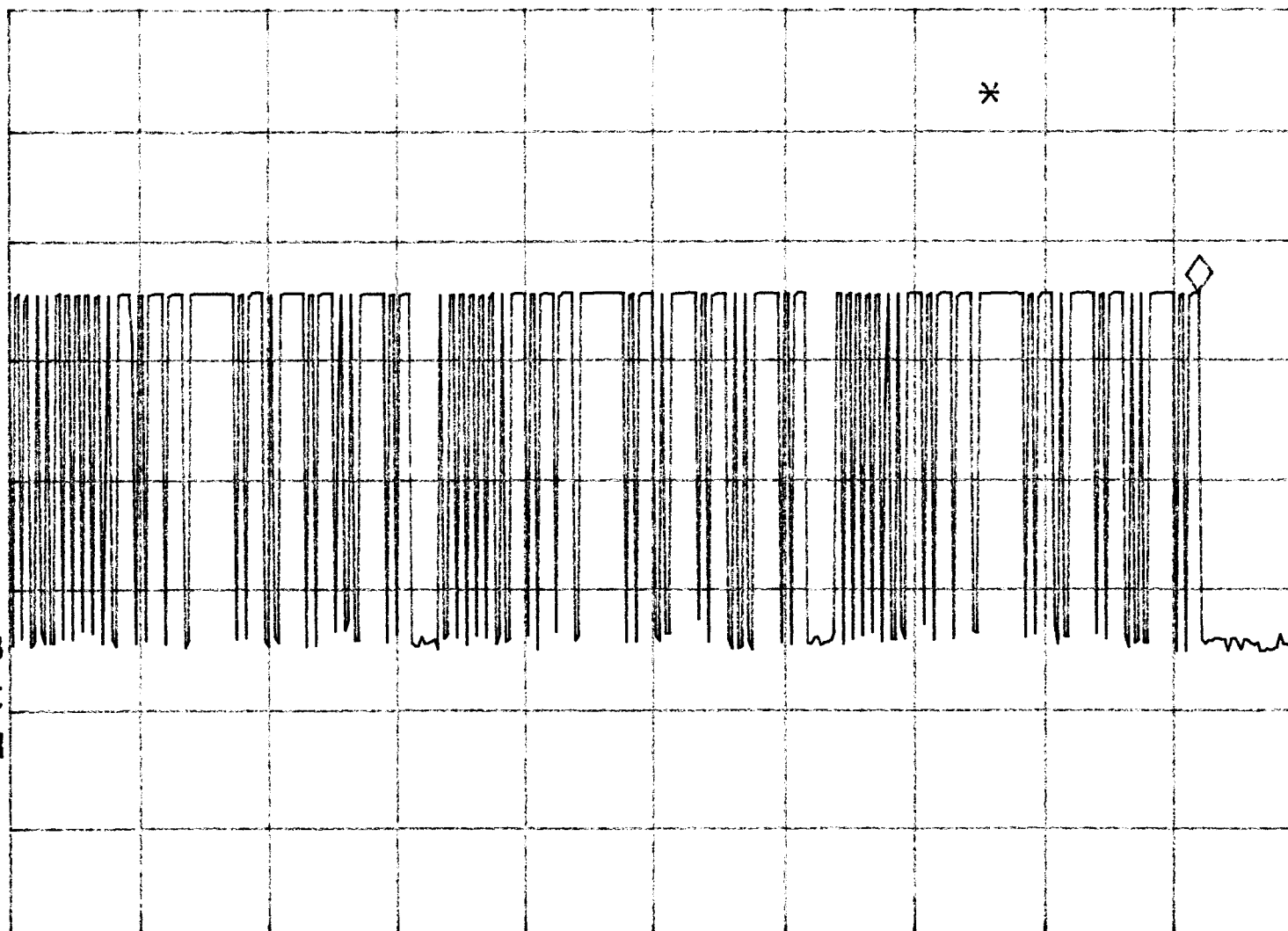
10

dB/

VA SB

SC VC

CORR



CENTER 434.001 MHz

SPAN 0 Hz

#RES BW 3.0 MHz

#VBW 3 MHz

#SWP 1.00 sec

h7

REF -10.0 dBm

AT 10 dB

Silent Period is about 3 min

PEAK

LOG

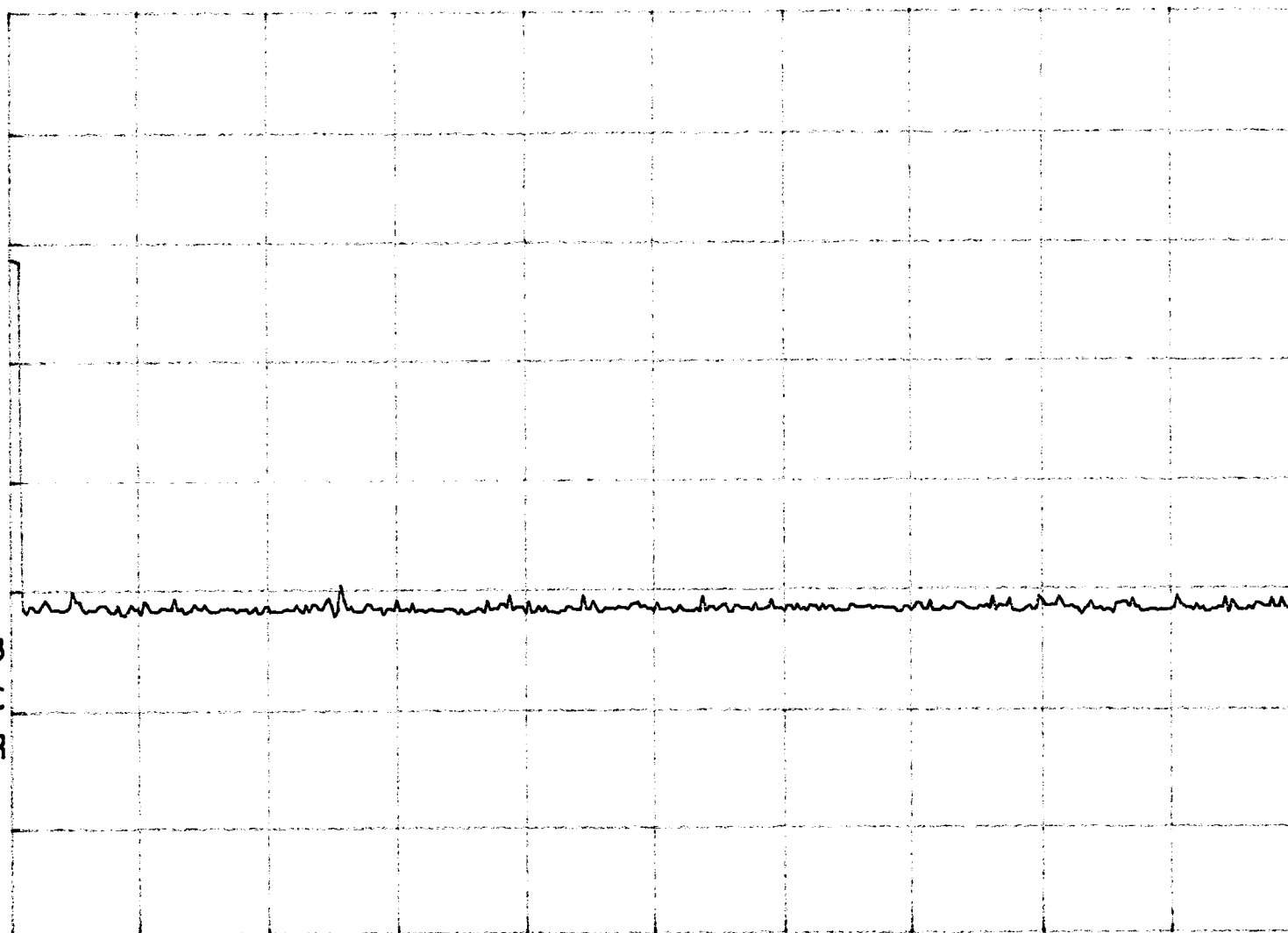
10

dB/

WA SB

SC VC

CORR



CENTER 434.000 MHz

SPAN 0 Hz

#RES BW 3.0 MHz

#VBW 3 MHz

#SWP 100 sec