

Gz Manual

Copyright 2000 by Streamnet

All rights reserved. First edition Printed 2000.

Printed in Korea

It is contrary to law to copy, reproduce, and extract this book illegally.

Microsoft is the registered trademark for Microsoft Corp.

Windows 98 is the registered trademark for Microsoft Corp.

Windows 98 SE is the registered trademark for Microsoft Corp.

Windows ME is the registered trademark for Microsoft Corp.

Windows 2000 is the registered trademark for Microsoft Corp.

Outlook 97 is the registered trademark for Microsoft Corp.

Outlook 2000 is the registered trademark for Microsoft Corp.

NetMeeting 3.0 is the registered trademark for Microsoft Corp.

Internet Explorer 5.0 is the registered trademark for Microsoft Corp.

The remaining trademark is the registered one for the related company respectively.

FCC NOTICE

THIS DEVICE COMPLIES WITH PART 15 OF THE FCC RULES.
OPERATION IS SUBJECT TO THE FOLLOWING TWO CONDITIONS:
(1) THIS DEVICE MAY NOT CAUSE HARMFUL INTERFERENCE, AND
(2) THIS DEVICE MUST ACCEPT ANY INTERFERENCE RECEIVED,
INCLUDING INTERFERENCE THAT MAY CAUSE UNDESIRABLE
OPERATION.

This equipment has been tested and found to comply with the limits for a Class B digital device, pursuant to part 15 of the FCC Rules. These limits are designed to provide reasonable protection against harmful interference in a residential installation. This equipment generates, uses and can radiate radio frequency energy and, if not installed and used in accordance with the instructions, may cause harmful interference to radio communication. However, there is no guarantee that interference will not occur in a particular installation. If this equipment does cause harmful interference to radio or television reception, which can be determined by turning the equipment off and on, the user is encouraged to try to correct the interference by one or more of the following measures :

- Reorient or relocate the receiving antenna.
- Increase the separation between the equipment and receiver.
- Connect the equipment into an outlet on a circuit different from that to which the receiver is connected.
- Consult the dealer or an experienced radio/TV technician for help.

NOTE : The manufacturer is not responsible for any radio or TV interference caused by unauthorized modifications to this equipment. Such modifications could void the user's authority to operate the equipment.

CONTENTS

1. What's Gz

2. How to install Gz

3. Before using Gz

4. Phone Call using Gz

4.1 Phone call using Internet Phone Service

4.2 Phone call using Program for Phone call

4.3 Volume Tuning

5. Outlook Execution using Gz

5.1. Phone Book Function

5.2. Schedule Management Function

5.3. Mail Box Function

5.4. Memo Function

6. Listening to Music using Gz

7. View Internet Explorer Bookmark

8. Environment Configuration

9. Version for Company Use

9.1. Phone call using IP

9.2. Phone call using Gateway

9.3. Use Hot key

9.4. Absence Configuration

9.5. Use Group messenger

1. What ' s Gz?

Streamnet Co., Ltd, which develops and sells a specialized multimedia network communication S/W & H/W has developed and issued **USB Internet Phone Gz**. You can use free Internet phone service with high-quality sound more easily and conveniently, using Gz.

1. System Requirement

➤ CPU	OVER PENTIUM 300MHz
➤ MAIN BOARD	USB PORT SUPPORTER
➤ MEMORY	OVER 32MB
➤ HDD	OVER 100 MB AFFORDABLE SPACE
➤ CD-ROM	OVER X 8
➤ OPERATING SYSTEM	MS WINDOWS 98, MS WINDOWS 98 SE
➤ WEB BROWSER	OVER MS INTERNET EXPLORER 5.0
➤ OPTION	MICROSOFT OUTLOOK 97, OUTLOOK 2000 MICROSOFT NETMEEING 3.0

2. Product Component

Gz package includes a phone, a handset, USB cable, a manual, and an installation CD.



3. Product Feature & Merit

- It ' s easy to use free Internet phone call because the same dial button as normal telephone is offered.
- Installation is easy through USB method.
- Phone call quality is high because of the built-in DSP CODEC.
- You can use various messaging service because it ' s linked with Microsoft Outlook

2. How Install Gz

1. Installation Gz Phone (**Windows 98, 98 SE**)

USB Internet Phone Gz using standard USB driver for windows doesn't require extra driver.

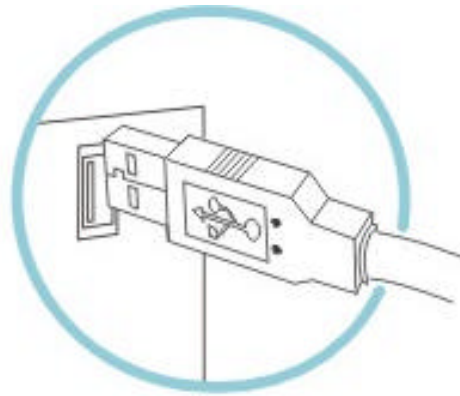
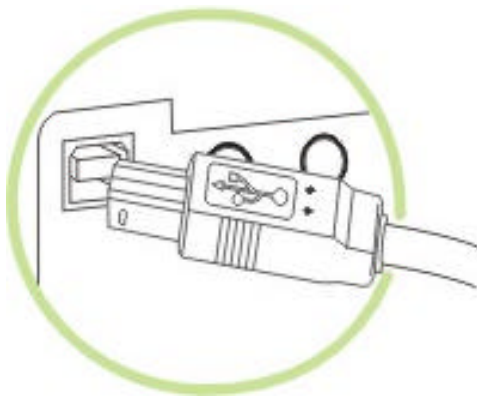
Windows ME, 2000 has built-in USB driver so that doesn't require H/W installation for Gz phone and is started from S/W installation.

Insert CD into CD-ROM first, please. You can see an installation window in no time.



When the installation window appears, connect PC and Gz phone with USB cable.

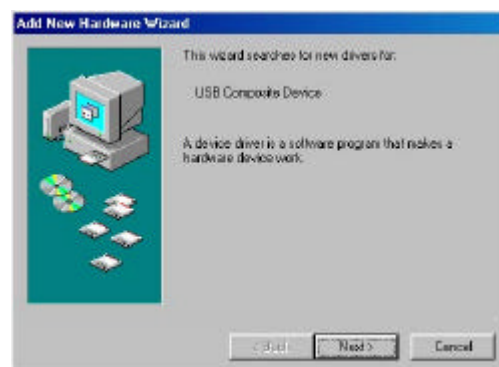
Connect one end of USB cable (following picture, left) to Gz phone and the other end to USB port on PC backside (following picture, right).



Once USB cable is connected, driver installation will be started automatically. The order for the installation is as follows: USB Multiple Device -> USB Human Interface Device -> USB Audio .

1 -1. USB Multiple Device

A Dialogue box for New hardware addition Wizard , will be shown. Press Next button.



Press Next button.



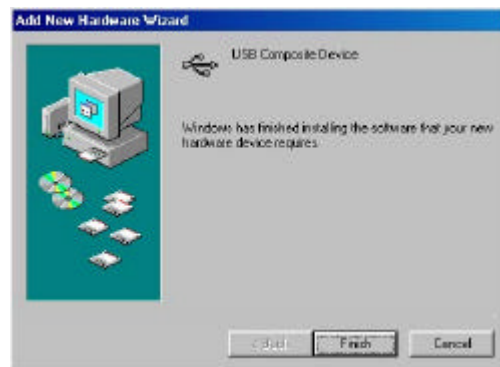
Press Next button.



Press Next button, and then the driver installation is started.

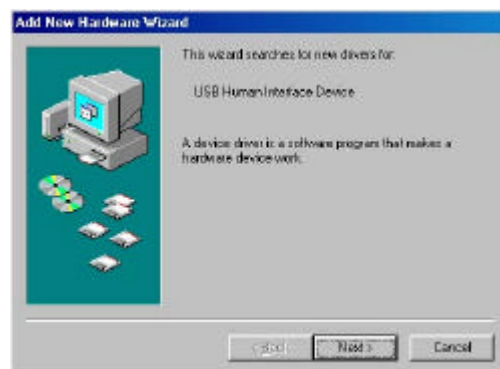


When the installation is finished, a completion window is shown. Press Finish button.

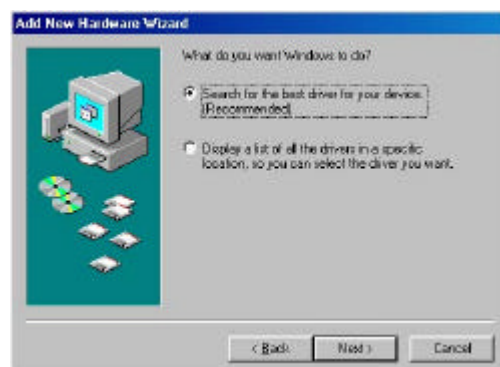


1-2. USB Human Interface Device

A Dialogue box for New hardware Addition Wizard is shown again. Press Next button.



Press Next button.



Press Next button.



If you press Next button, the driver installation is started.

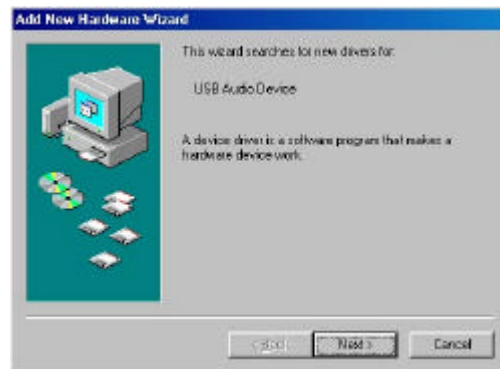


When the drive installation is finished, a completion window is shown. Press Finish button.



1-3. USB Audio Device

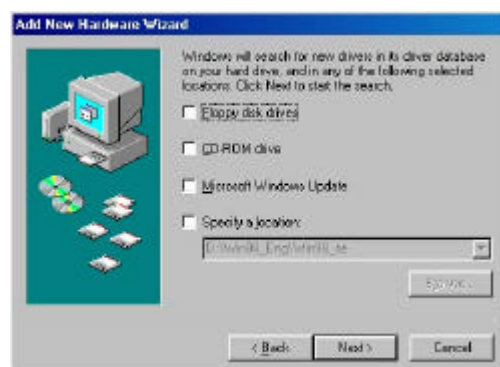
A Dialogue box for New hardware Addition Wizard is shown. Press Next button.



Press Next button.



Press Next button.



Press **N e x t** button, and then the driver installation is started.



When the installation is finished, a completion window is shown. Press **F i n i s h** button.



After finishing all installation for Gz phone, install Gz software.

\ 2. Gz Software Installation

When the installation for Gz phone is finished, the software installation window for Gz phone is shown.



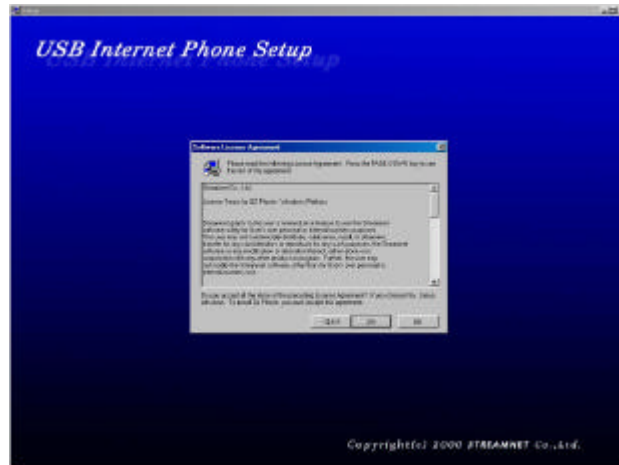
If you click the **Yes** button on the installing window, the software installation is started.

When the first dialogue box for software installation is shown, press **N e x t** button.

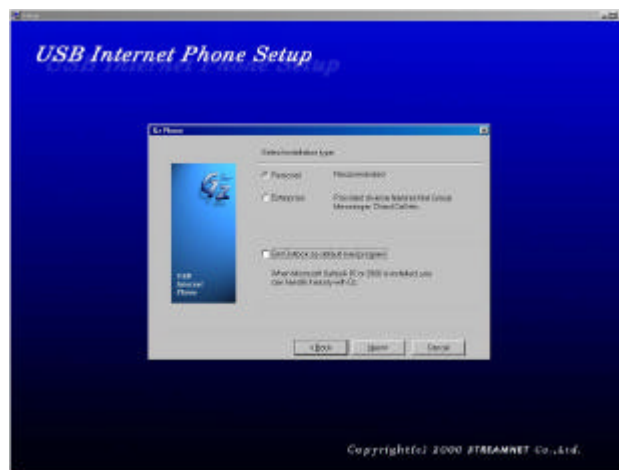


The dialogue window asking whether you agree with the license, or not.

If you agree with it, press **N e x t** button.



The dialogue box asking both **S/W version** and whether you will link this with **Outlook** is shown.



The Version for Company Use under the LAN environment offers group messenger and direct phone call.

In case that **Outlook 97** or **Outlook 2000** is installed in use' s PC, when you choose **Outlook execution**, you can use various functions of Outlook conveniently.

If you click **Next** button after selecting the linking with Outlook, The dialogue window for Environment Configuration is shown. The explanation for each configuration item is as follows;



User Name : Input user ' s name.

E-mail Address : Input user ' s e-mail address.

IP Address : Input User ' s IP address.

In the case of the **Version for Company Use** following items are added..

Department Name: Input user ' s department.

Telephone Number : Input user ' s line number.

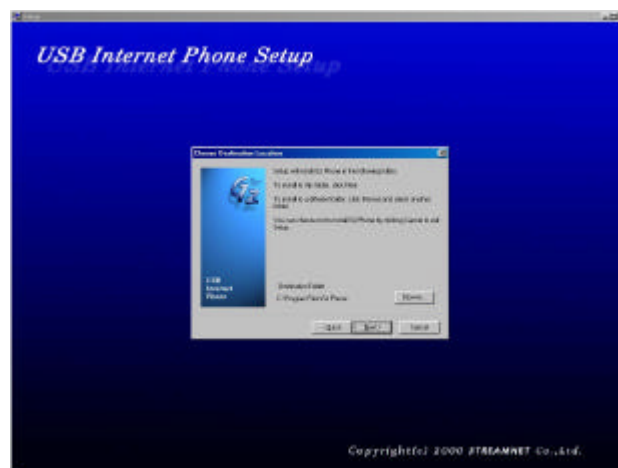
Gateway: In case that there is an intra-company gateway, input the IP address.

After filling out each item, click **Next** button. The window for Internet Phone Environment Configuration is shown.



In the case of **Wowcall**, once you register ID and password, when you use Internet phone, log-on is processed automatically. Input ID and Password and press **Next** button.

Select objective folder window is shown. Select the folder you want, and then press **Next** button.



The window, **installation type**, is shown. If you click the **Next** button, the installation is started. The installation process of the related programs (NetMeeting, Internet Explorer) can be included under some user's PC environment.

When the installation is finished, **Gz Phone** shortcut is added on desktop and Gz Phone is added in sub-menu of Start menu program. In the case of normal Gz installation, when you start PC, it starts automatically and the icon is added on the right side of the task bar.



When you **double click** the icon, Gz software window is shown.



If you click the button in red circle, the window will be disappeared.

3. Start Gz

After installation, when Gz is executed for the first time, if you choose **Outlook execution with Gz** and then **Mail environment configuration** window will be shown.



If Outlook 97 or Outlook 2000 is already installed in user' s PC, choose **Microsoft Outlook** in **Basic Mail System** combo box. You can' t use some part of the functions Gz offers without Outlook program.

In the case of **the version for Company**, if you didn' t use NetMeeting before Gz installation, **Mail Environment Configuraion** window and **NetMeeting** configuration window would be shown.



Click Next button, and then **Audio Tuning Wizard** window is shown after a series of general installation process.



Click Next button, and then Audio Device configuration window is shown.



Choose **USB Audio Device** in both Rec. and Play.

Click Next button, and then Audio Play Test window is shown.



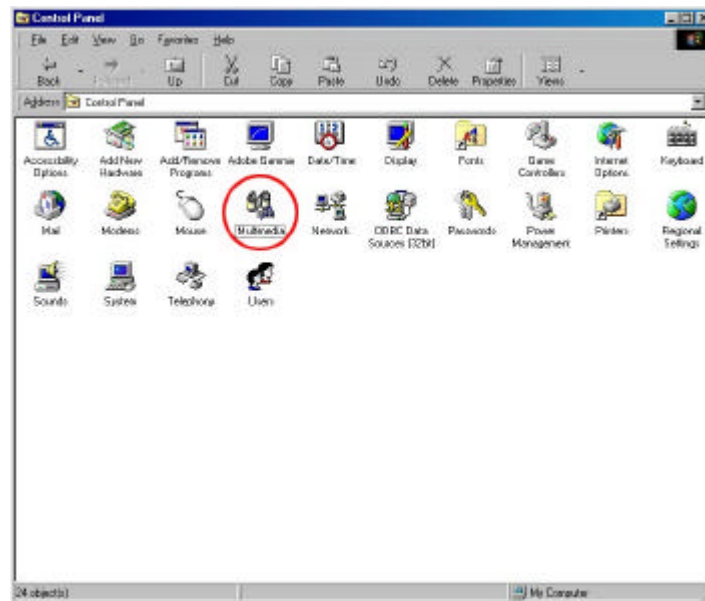
When you click Test button holding Gz receiver, check whether there is a sound or not. If you click Next button after the test, Audio Record Test window will be shown.



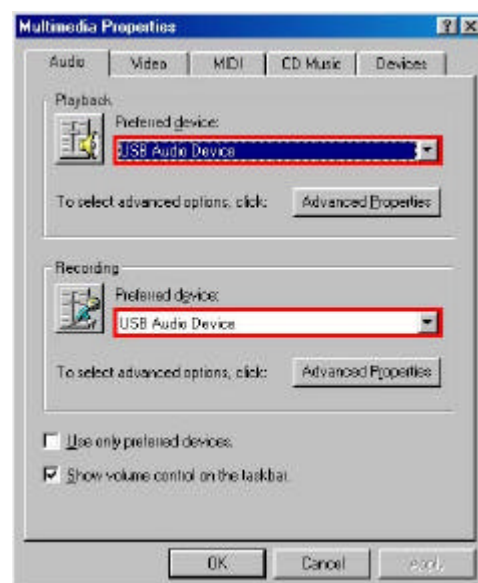
Check the volume of the voice is appeared when you read the offered sentences holding the receiver. Click Next button after all the test, and then NetMeeting configuration will be finished.

4. Basic Audio Configuration

When Gz Phone and software installation is finished, USB Audio Device is changed into Basic Audio Device. Check Basic Audio Device installed at present. Choose **Multimedia** in **Control Panel**.



Multimedia Registration Information window is shown. Check both **Play** and **Record** are set as **USB Audio Device**.



If you have used other Sound cards, you should change **USB Audio Device** into Basic Audio Device configuration by yourself. Change both Play and Record into USB Audio Device configuration in **Multimedia Registration Information** window.

If you want to use original Sound card, configuration Basic Audio Device into the original Sound card in original **Multimedia Registration Information** in the same way.

3. Before Use

1. Environment for Software Use

You can use various messaging services conveniently, because Gz software is connected with **Microsoft Outlook 97** or **Outlook 2000**. Therefore if there is no Outlook program in user's PC, you can't use some parts of the functions.

In the case of the **Version for Company**, **Microsoft NetMeeting 3.0** is installed automatically. The functions for network are not offered in the Version for Personal use.

2. Dial Button Input Mode

Dial Buttons (0 ~ 9, #, *) of phone are used not only for original function but also for **Hot key** or **Function key**. This kind of usage change is called Mode Change, you can check the present Mode using LCD **Dial Button Input Mode icon**.

(as follows)



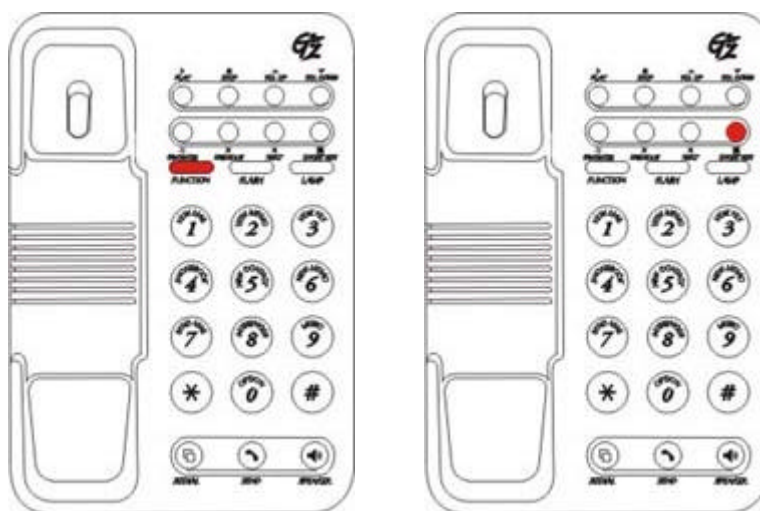
Possible configuration mode is as follows:

Phone Call Mode	<p>It' s marked as R in LCD window.</p> <p>If you press button, the allotted number is inputted.</p> <p>It' s used when you input phone number or IP address.</p>
Function key Mode	<p>It' s marked as F in LCD window and phone ramp is turned on.</p> <p>If you press button, the function marked above the each number is executed.</p> <p>You can use various functions of Outlook conveniently.</p>
Hot key Mode	<p>It' s marked as S in LCD window.</p> <p>If you press button, it calls allotted phone number of ten registered0 phone numbers. (It' s offered in the Version for Company.)</p>

2.1. Mode Change

Two methods are possible for Mode change.

First, whenever you press **FUNCTION** button of in the upper part of the phone, **Function key Mode** and **Phone call Mode** is changed. If you press Function key button, it' s changed into **Function key Mode**.



Secondly, click **Dial Button Mode Indication icon**, and then the Mode is changed. Whenever you click the icon, the Mode is changed as follows: **Phone Call Mode** -> **Function key Mode** -> **Hot key Mode**. In **Function key Mode**, phone ramp is turned on.

3. Sound Output Mode

Gz offers sound card function basically. Because Exterior Audio / Mice is offered except USB, you can use general speaker or head set as an output device. Like this, when several devices are connected to the phone, you can change sound output Mode.

You can check the present Mode in LCD window.

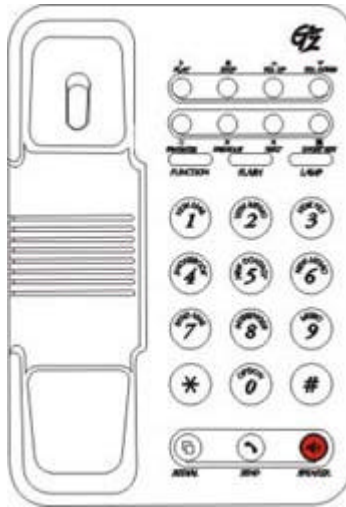


Possible configuration Mode is as follow.

Sender/Receiver Mode	It' s marked as a receiver shape in LCD window. Sound is outputted through the phone receiver.
Exterior Speaker/ Mike Mode	It' s marked as a speaker shape in LCD window. Sound is outputted through the speaker or head set.
Both of them	It' s marked as a ' ring' shape in LCD window. Sound is outputted through both the phone receiver and speaker or head set.

3.1. Sound Output Mode Change

If you press **Speaker** button in the lower part of the phone, the Mode is changed.



Whenever you press the button, it s changed as follow: **Sender/Receiver -> Exterior Speaker**
/Mike -> Both of them.

4. Gz Software

Gz software is prepared to use all the functions Gz offers even under the environment in which Gz Phone isn' t installed.

Gz software is consist of **Main Window** and **LCD Window** in Main Window.

3.1. Main Window

If you **double click** Gz software window, the window is expanded and **Keypad** part is shown as follows.



Each button of Keypad has the same function as Gz Phone Dial button of allotted number. Left two buttons of three buttons located on keypad have the same functions as Redial/Send buttons in the lower part of the phone. Right button is a Hang up button and if you click it with mouse, you can finish the call.

4.2. LCD Window

User' s name and the present time are marked in the center of the LCD.



4.2.1. Function Button

Various functions Gz offers are executed when you click the buttons in the upper part and the lower part of LCD.



4.2.2. Situation Button

It informs you the arrival of new message of mail, memo, file, etc. or marks the present configuration situation of the phone.



4.2.3. Color Tuning

Click LCD window using right button of the mouse, and then the menu is shown.

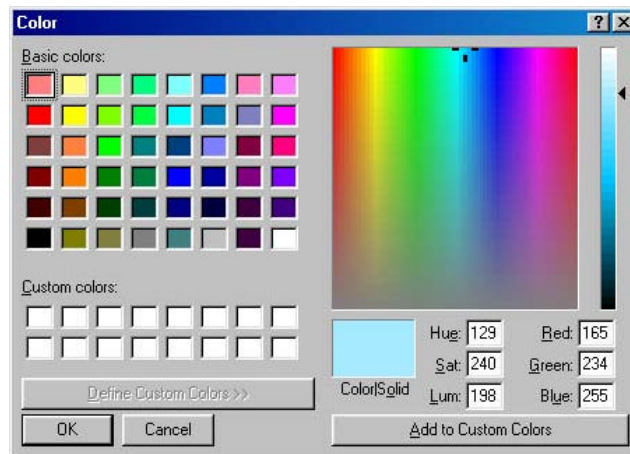


If you choose **Color Tuning** in the menu, Color Tuning window is shown.



If you move the button in red circle up and down, it will be change to the same color as the present configuration standard color.

To change the standard color, click the square button in the lower part. If you click the button, **Color** window is shown.



To hide or move Color Tuning window, use **Grip** in the upper part.



To move the window, move it clicking Grip.

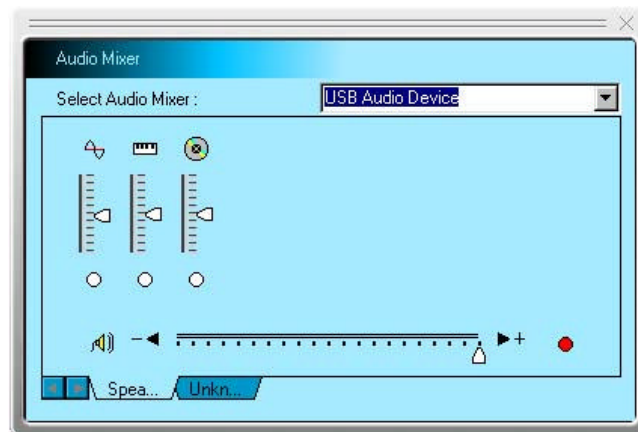
If you double click Grip, the window is disappeared.

4.2.4. Sound Tuning

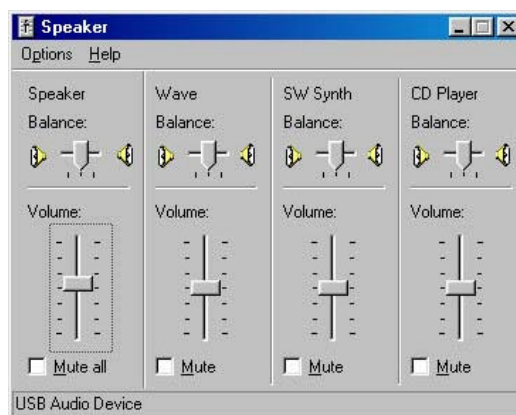
Click LCD window using right button of the mouse, and then the menu is shown.



Choose **Sound Tuning** in the menu, and then **Sound Tuning Panel** is shown.



Sound Tuning Panel offers the same function as **Volume Tuning** window Windows offers.



4. Game Mode Configuration (Version for the Company)

It can happen that the monitor color is not able to change during Gz execution. In this case, you can do the monitor configuration when you use **Game Mode** as a Gz configuration Mode..

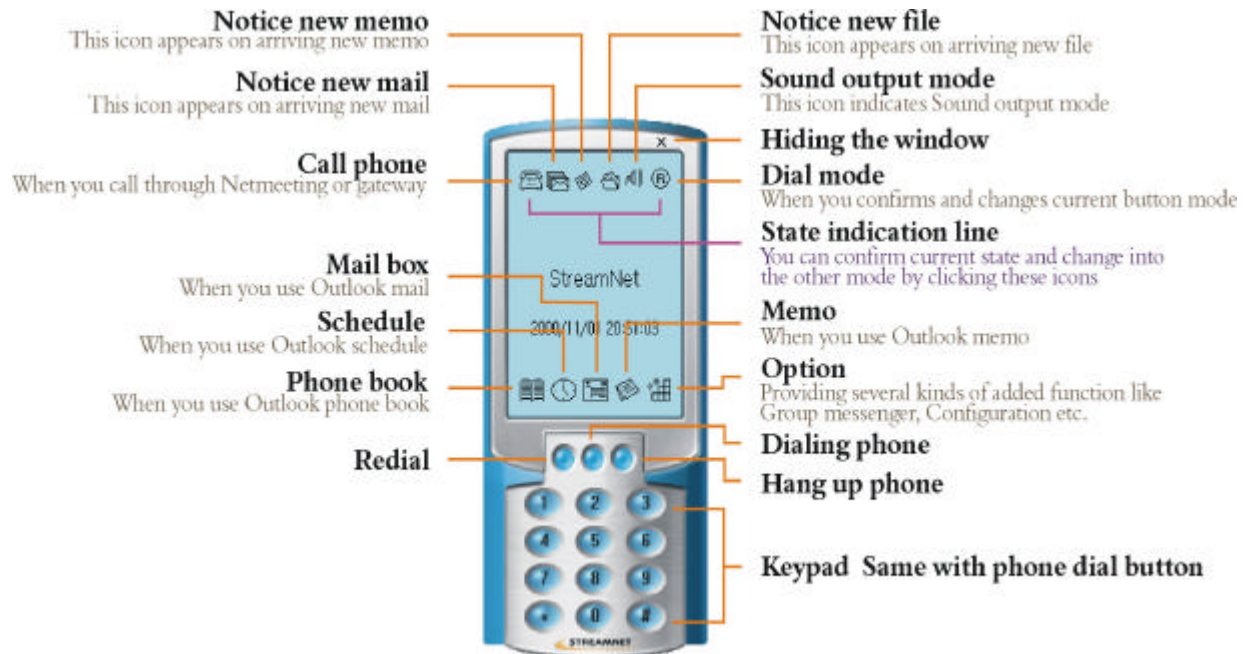
Choose Game Mode configuration in **etc.Option** menu.



For normal Gz execution, undo Game Mode after the monitor configuration. Choose Game Mode menu again, and then the Mode is undid.

5. Respective title

6.



4. Phone Call Using Gz

You can use an Internet phone service more conveniently with Gz. According to the service form, phone call mode is as follows.

Phone call using Internet Phone Service

Phone call using Phone call Program

4.1. Phone call using Internet Phone Service

Make a phone call through the web sites (Dial pad, Wowcall, etc.), which offer Internet phone service.

1. Web Site Registration

First of all, register the Internet phone site user use frequently. There are two ways for the registration.

1.1. Registration in Environment Configuration

Change Dial button input mode to **Function key** Mode.



Press dial button **0**(option) in the phone, and then environment configuration window is shown.

Choose **Network Configuration** tab in the environment configuration.

Choose **Internet Phone Service Logon** in the **Basic Phone call Method** combo box of network configuration and input address of the web site in **Internet Phone ISP URL**.

The screenshot shows a window titled "Option" with a light blue background. It contains several input fields and buttons. The "Default Method" dropdown menu is set to "Logon to ITP". The "URL" field is highlighted with a red rectangular box and contains the text "http://". Other fields include "IP Address" (111.111.111.111), "Gateway Address", "IP Addr. for Multicast" (236.0.0.2), "Port No. for Multicast" (8932), "User ID", and "Password". There are buttons for "Search Program", "Apply", and "Close". At the bottom, there is a tabbed interface with tabs labeled "Gene...", "Mail", "Netw...", "Ring", and "About".

In the case of **Wowcall**(<http://www.wowcall.com>) service, when you register ID and Password, login is processed automatically.

.

This screenshot is similar to the previous one, showing the "Option" window. In this instance, the "User ID" and "Password" fields are highlighted with red rectangular boxes. The "URL" field now contains "http://". The "Default Method" remains "Logon to ITP". The other fields and buttons are the same as in the previous screenshot.

After filling out all items, click **Apply** button.

1.2. Registration in Etc. Option Menu

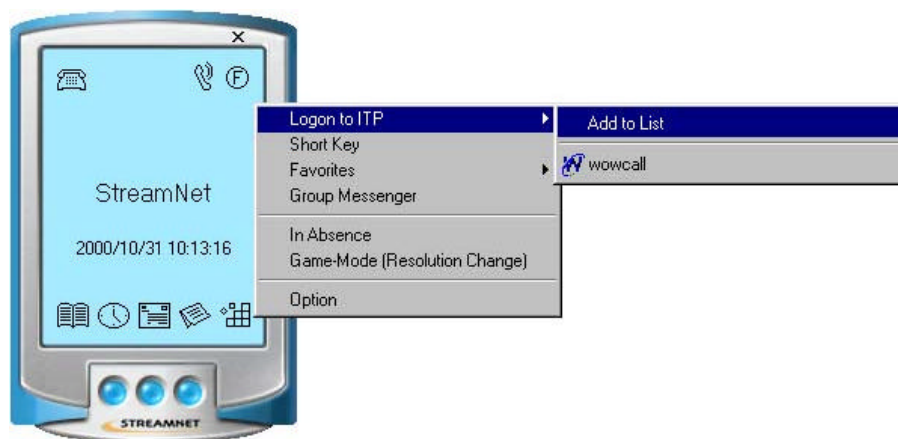
Click **Etc. Option Menu** in LCD window.



If you click Etc. Option button, a menu is shown.



Move mouse to **Internet Phone Service Logon**, and then sub menu is shown.



Choose **Execution after Registration** in the sub menu, and then URL registration window is shown.

The image shows a Windows-style dialog box titled "Internet Phone Service Provider Setup". It contains several input fields and controls. At the top is a "Description" text box. Below it is a label "* URL" followed by a text box containing "http://". Underneath the URL field are two radio buttons: "Web" and "Program". The "Web" radio button is selected and circled in red. To the right of the "Program" radio button is a dropdown menu currently showing "wowcall". Below these radio buttons is a checked checkbox labeled "As Default". At the bottom of the dialog are two more text boxes labeled "User ID :" and "Password :". At the very bottom are three buttons: "Delete", "Ok", and "Cancel".

Input **Name** and **Address** and press **Confirm button**, the allotted site is connected at the same time.

In the case of choosing Basic Phone call Configuration, when you pick up the receiver the allotted site is connected automatically.

In the case of using **Wowcall** (<http://www.wowcall.com>) service, If you input **User ID** and **User Password**, a logon will be processed automatically.

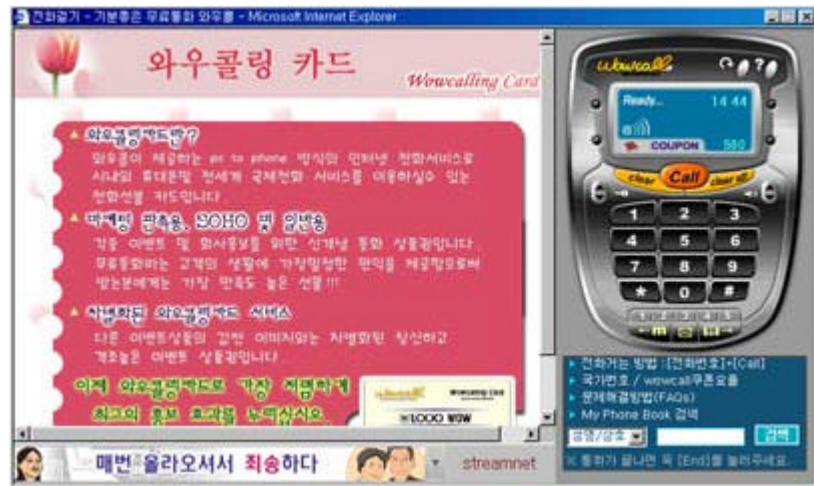
2. Making a Phone call

Pick up the telephone receiver, and then the registered web site is connected directly.

When you use Wowcall, phone call page is shown because logon is processed automatically. (Be sure that this function can be erased in the course of negotiation with the allotted company.)

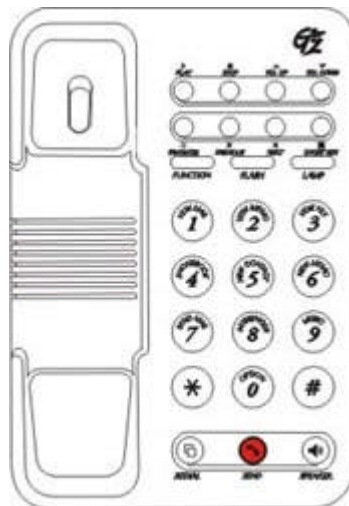
2.1. Making a phone call using Wowcall

When you pick up the telephone receiver, **Wowcall** site is connected directly. Register ID and password in the environment configuration, and then logon is processed automatically.



Press **Dial Button** without using keyboard, and then the allotted number is inputted. To correct a wrong inputted number, use **PREVIOUS** key in the upper part of the phone. If you press **PREVIOUS** key, recently registered number is deleted.

After the number registration, press **SEND** button, and then making a phone call is started.



When you finish phone call, either put down the telephone receiver or press **SEND** button again, and then phone call is over.

4.2. Phone call using Phone call Program

According to the Internet phone service, not web method but special program is offered. (ex: Telefree, <http://www.telefree.co.kr>)

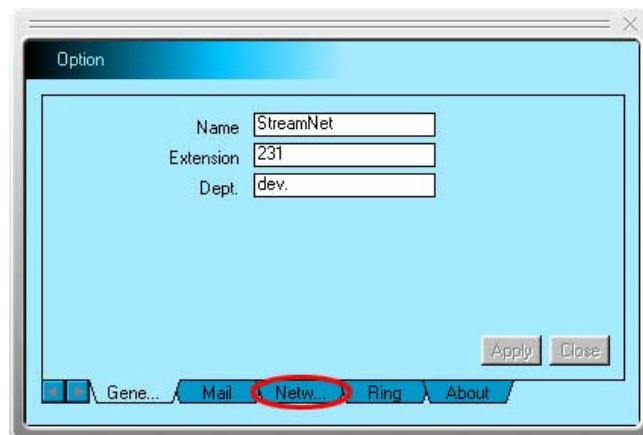
In case that, there is a program only for phone call internet phone service offers, if you apply it to basic phone call method configuration, the program will be started automatically when you pick up the receiver. (Automatical logon function is not offered.)

1. Program Registration

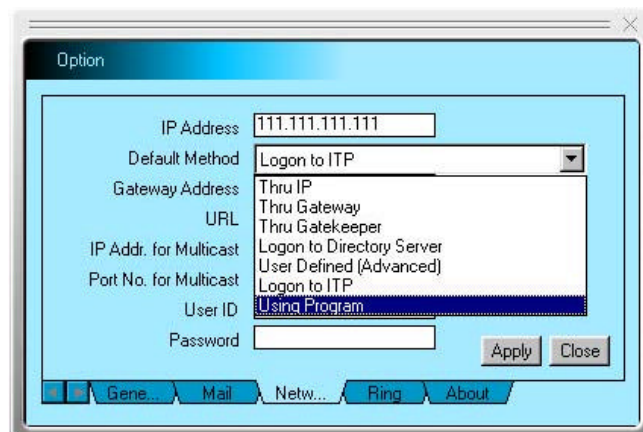
First of all, register the program user use frequently. There are two ways to register it.

1.1 Registration in Environment Configuration

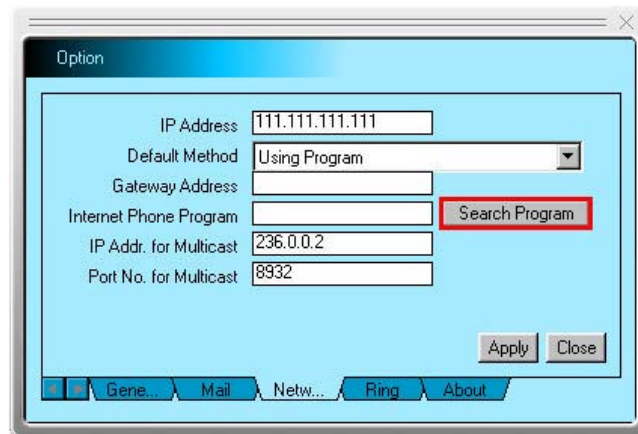
Choose **Network Configuration** tab in environment configuration.



Choose **Making an Internet Phone call using special program** in **Basic Phone call Method** combo box.



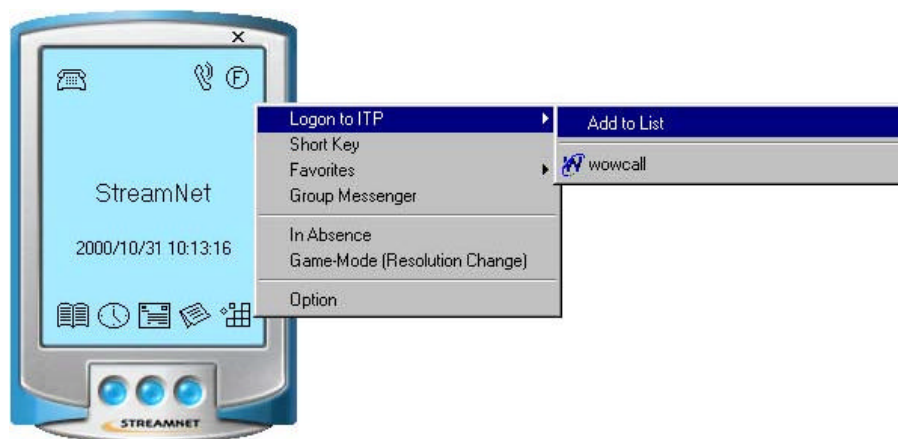
Searching program button is shown. Press **Searching program** button.



Searching Folder dialogue box is shown. Choose the program you want and press **Confirm** button, and then the program is chosen. Press **Apply** button in environment configuration window.

1.2. Registration in Etc. Option Menu

Move a mouse to **Internet Phone Service Logon** in etc. option menu, and then sub menu is shown.



Choose **Execution after Registration**, and then URL registration window is shown. Choose Program **only for phone call** in registration window.



Input **Name** and press **Opening Program**, and then **Searching Folder** window is shown.

Choose program and press confirm button, and then searching folder window is disappeared and the registered program name, which is registered in Address blank, is marked.

Press **Confirm** button in the registration window, and then the allotted program is executed at the same time.

In the case of choosing **Basic Phone call Configuration** in the registration window, when you pick up the telephone receiver, the registered program is executed automatically.

.

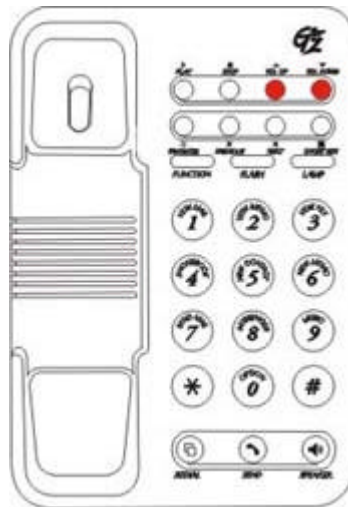
2. Making a Phone call

Pick up Gz phone receiver, and then the configuration program is executed directly.

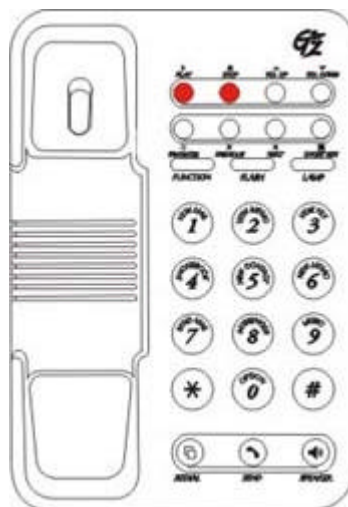
If you want to know how to use the program, please call the allotted service company.

4.3. Volume Tuning

You can control the amount of the partner' s voice using VOL **UP / DOWN** button in the upper part of the phone.



You can control the amount of your voice using **PLAY / STOP** button in the upper part of the phone. If you press **PLAY** button, it' s increased and if you press **STOP** button, it' s decreased.



5. Outlook Execution using Gz

In case that **Microsoft Outlook97 or Outlook 2000** is installed in user' s PC, you can execute various messaging functions Outlook offers using Gz. The connected functions Gz offers are as follows:

Telephone Book Function
Schedule Management Function
Mail Box Function
Memo Function

Two methods for Outlook execution are offered according to the function. First, you can execute it pressing **Dial Button** in **Function key (F)** Mode. Second method is to choose **Menu** clicking Outlook connection button of Gz software.

5.1. Telephone Book Function

In case that Outlook is installed in user' s PC, Phone number function can be used directly without Outlook execution.

When you execute it using phone **Dial Button**, change Dial button input mode to **Function key (F)** Mode, first.



When you use **Menu**, click **Telephone Book** button in LCD window, and then the menu is shown.



1. New Where-to-make-contact Addition

Press dial button No. 5 (**NEW CONTACT**) in Function key (F) Mode, and then where-to-make-contact writing window is shown.

A screenshot of a software window titled 'Untitled - Contact'. The window has a menu bar with 'File', 'Edit', 'View', 'Insert', 'Format', 'Tools', 'Actions', and 'Help'. Below the menu bar is a toolbar with icons for 'Save and Close', 'Print', 'Find', 'New', 'Open', 'Save', 'Copy', 'Paste', 'Undo', 'Redo', 'Zoom In', 'Zoom Out', and 'Reset'. The main area of the window is divided into two panes. The left pane has tabs for 'General', 'Details', 'Activities', 'Certificates', and 'All Fields'. The 'General' tab is selected. It contains fields for 'Full Name...', 'Job title:', 'Company:', 'File on:', 'Address...', 'Business', 'Home', 'Business Fax', 'Mobile', 'Email', and 'Web page address:'. There are also checkboxes for 'This is the mailing address' and 'Send using plain text'. The right pane is empty. At the bottom of the window, there are buttons for 'Contacts...', 'Categories...', and 'Private'.

When you use **Menu**, choose **New Where-to-make-contact** in menu, and then Where-to make-contact writing window is shown.

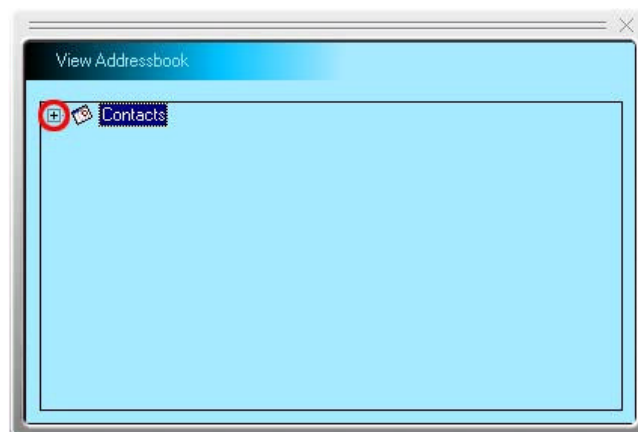
2. New Contact Group Addition

Choose **New Contact Group** in Telephone book Menu, and then mail group writing window is shown..



3. View Where-to-make-contact

Choose **View Where-to-make contact** in Telephone book menu, and then **View Address Book** window is shown.



Click **+** , and then registered Where-to-make-contact is shown.