

PONADO USER GUIDE MANUAL



Caution : Changes or modifications not expressly approved by the party responsible for compliance could void the user's authority to operate the equipment.

NOTE: This equipment has been tested and found to comply with the limits for a Class B digital device, pursuant to part 15 of the FCC Rules. **These limits are designed to provide reasonable protection against harmful** interference in a residential installation.

This equipment generates, uses and can radiate radio frequency energy and, if not installed and used in accordance with the instructions, may cause harmful interference to radio communications. However, there is no guarantee that interference will not occur in a particular installation. If this equipment does cause harmful interference to radio or television reception, which can be determined by turning the equipment off and on, the user is encouraged to try to correct the interference by one or more of the following measures:

- Reorient or relocate the receiving antenna.
- Increase the separation between the equipment and receiver.
- Connect the equipment into an outlet on a circuit different from that to which the receiver is connected.
- Consult the dealer or an experienced radio/TV technician for help.

Thank you for purchasing Gigasysnet's Internet phone.

Please read this manual carefully before using the product. Then, it becomes much more convenient to use.

If you have any questions while using this product, please contact the head office or the sole agent.

Table of Contents

1. Product Introduction
2. Features
3. Main Function
4. Notice Articles)
5. Components of PONADO)
6. Setup of PONADO)
7. Installation of PONADO S/W)
8. Exp[anation of Main Window]
9. Usage of PONADO)
 - 9.1 Adding to Phonebook
 - 9.2 Use of Hot key
 - 9.3 Calling PONADO to Phone
 - 9.4 Calling PONADO to PONADO
10. System Specification
11. FAQ

1. Product Introduction



GIP-100

GIP-200

PC Interface : Serial or USB Port
Feature : Phone Book, Direct WEB Access
Component : Phone Unit, Integrated Connection Cable

2. Features

Is this really an Internet Phone?

Unanimous voice. This is the exclamatory question made in expressing the surprise at the crystal-clear sound quality of PONADO's telephone communication. As it is a digital telephone for exclusive Internet use which has adopted the digital signal processing technology, PONADO provides excellent sound quality.

Install at once without a soundcard and use like ordinary phones

As it does not use any soundcard made to be appropriate for enjoying games or music, if you connect it to your computer's serial port or USB port and install just the software, you can use PONADO more conveniently than ordinary phones without making a connection to any web site.

Do you still have to see advertisements in order to make a phone call?

Only by paying the charges for connecting to inside-city telephones from the Internet, you can use outside city telephones and international telephones like inside-city telephones. Of course, telephone calls

between PONADO users are free-of-charge.

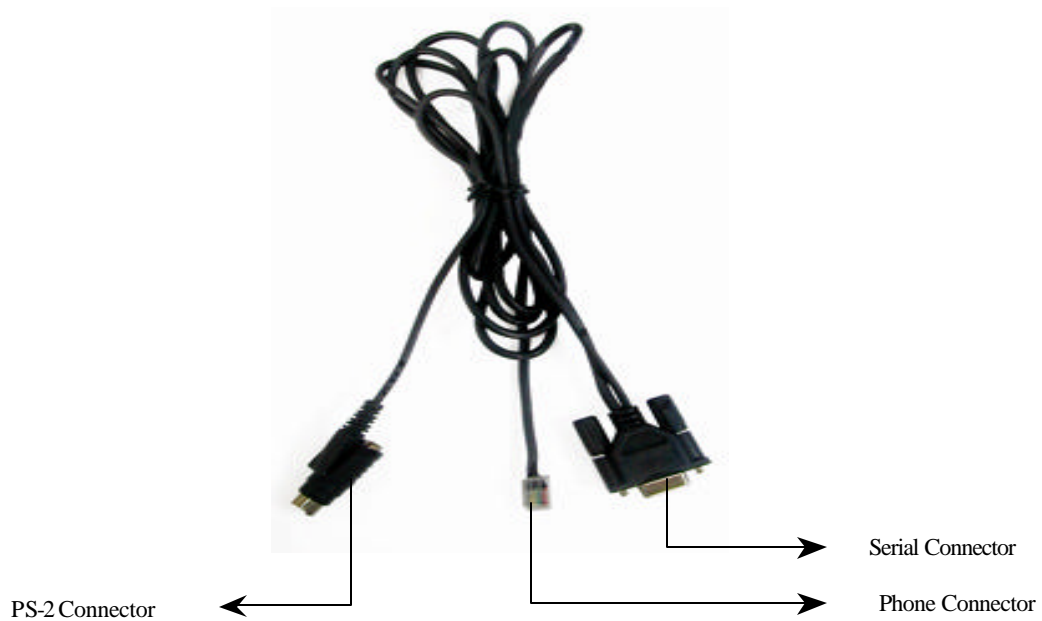
3. Main Functions

- You can make telephone calls just by picking up the phone without having to connect to the Internet and logging in your ID.
- By using the number system PIN(PONADO Identification Number), which is the same as ordinary phones, the same user environment as ordinary phones is provided.
- As it follows the international Internet phone standard H.323 V2, it is compatible with other types of machines.
- Telephone directory, quick dialing, and redialing functions
- DWA (Direct Web Access) button function
- Voice-recognition telephoning (planned)

4. Notice Articles

- **The use of this telephone is possible only when the connected computer is in normal operation.**
When there is a power outage, you cannot use it.
- **When you install the PONADO telephone, be sure to turn off the computer.**
- Do not expose it to heat or give any shock. There are damage and fire dangers.
- Avoid installing it in places where there is a lot of vapor or humidity.
It can become a cause of a break down or the life spans of the components can be shortened. .
- Do not disassemble on your own discretion. It can become the cause of a break down.
- Do not spray water directly and do not clean it with benzene, thinner, of alcohol.
There is a danger of receiving electric shock or catching fire.
- Do not use any other cables than the cable provided.
It can become a cause of a break down or a fire.
- If there is any strange sound, smell, or smoking coming out of the product, turn off the PC immediately and contact the service center. There is a danger of receiving electric shock or catching fire.
- If the weather has extreme falling of lightning, stop using and separate it from the PC.
- **CAUTION – For use only with UL Listed PC.**

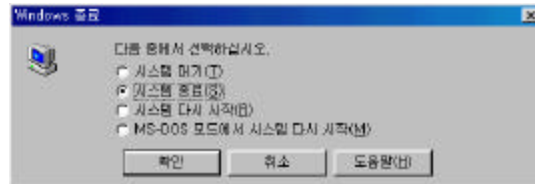
5. Components



- ◆ SEND button : Used when making a telephone call or when redialing.
- ◆ PB button : Used when putting in the period (.) of the IP-address in case of searching the number stored in the telephone directory or when making a telephone call to an Internet phone of which you know only the IP-address.
- ◆ Direct web access (WWW) button: Move to the Internet home page (URL) set up by the user.

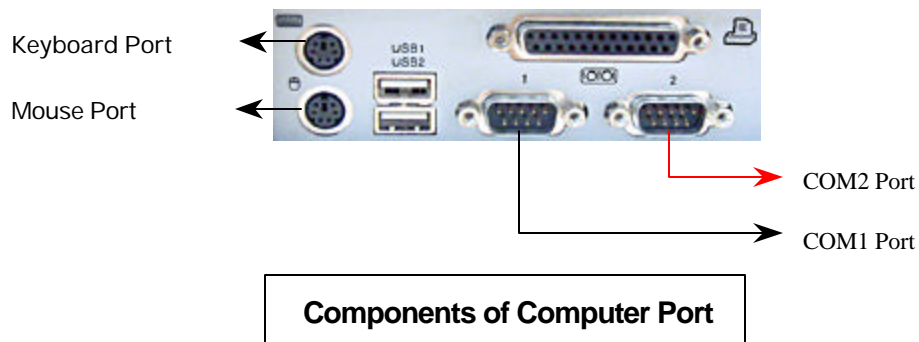
6. Setup of PONADO

1) Shutdown the window and start the setup of PONADO



2) Setup PONADO as follows

Warning! Keep the order as follows.



① Connect **Phone Connector** in
PONADO PONADO

② Connect **Serial Connector** in
COM1 Port



3 Pull Out Mouse Connector in Mouse Port



4 Connect PS/2 Connector with Mouse Connector



5 Connect PS/2 Connector in Mouse Port



6 The setup of PONADO is finished



7 The installation method to a notebook PC is the same as that for desk-tops, and the appearance after completing the installation is in the photo below.

