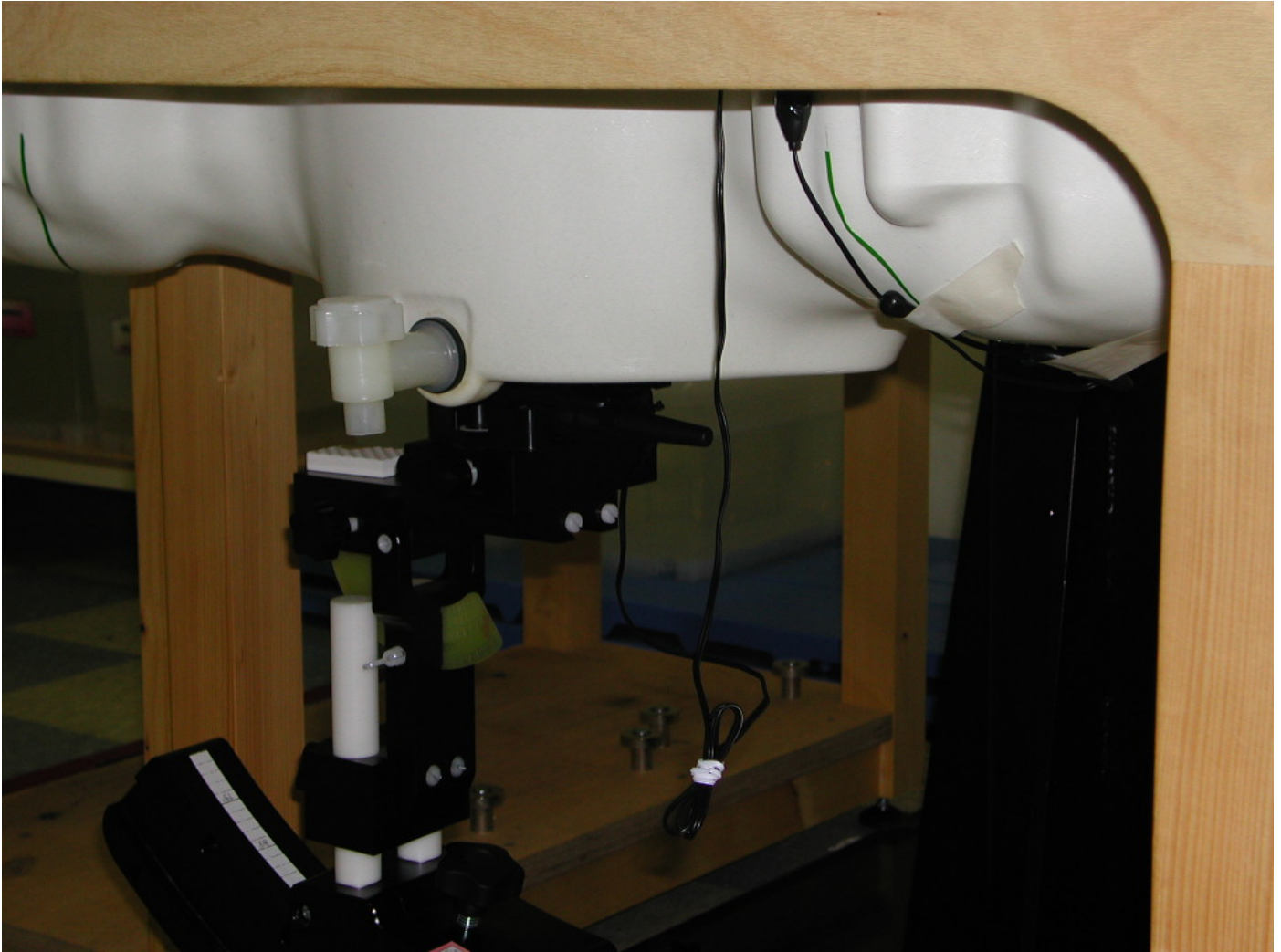
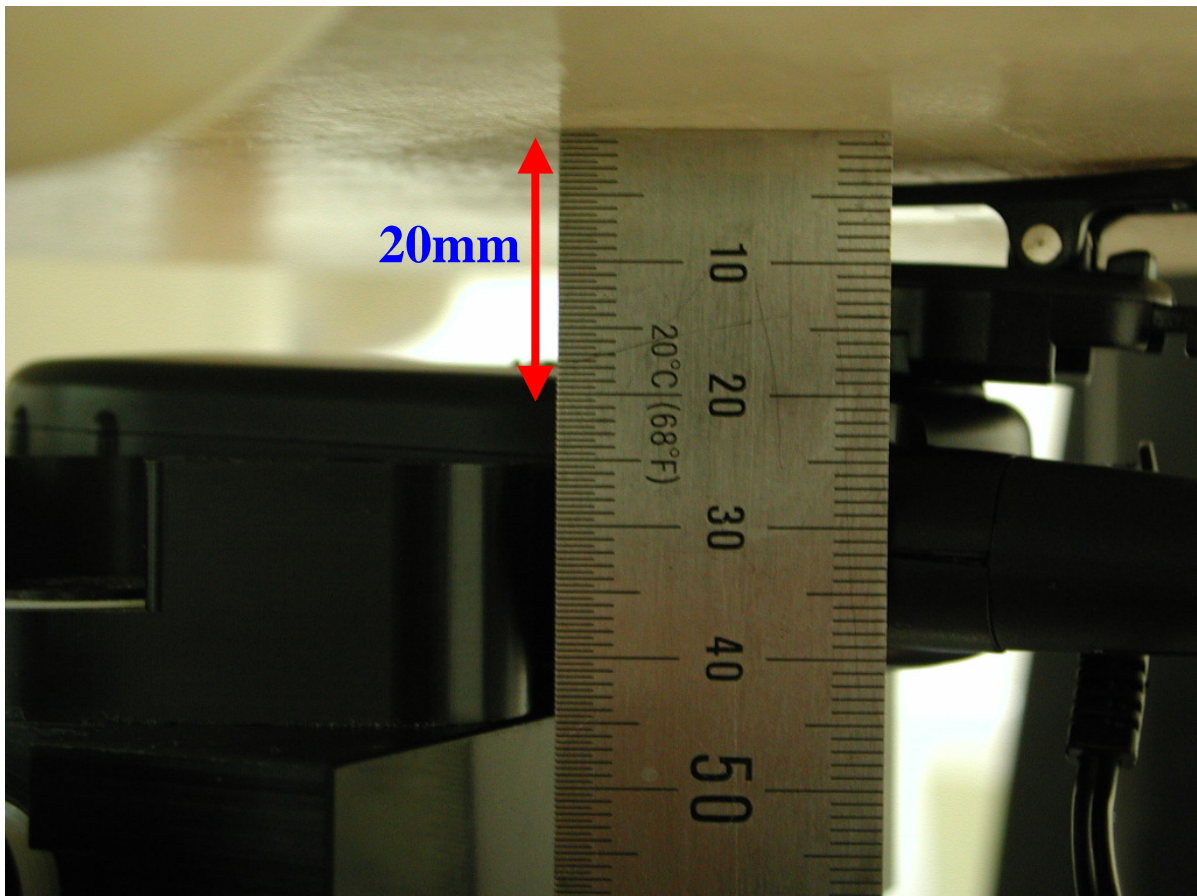
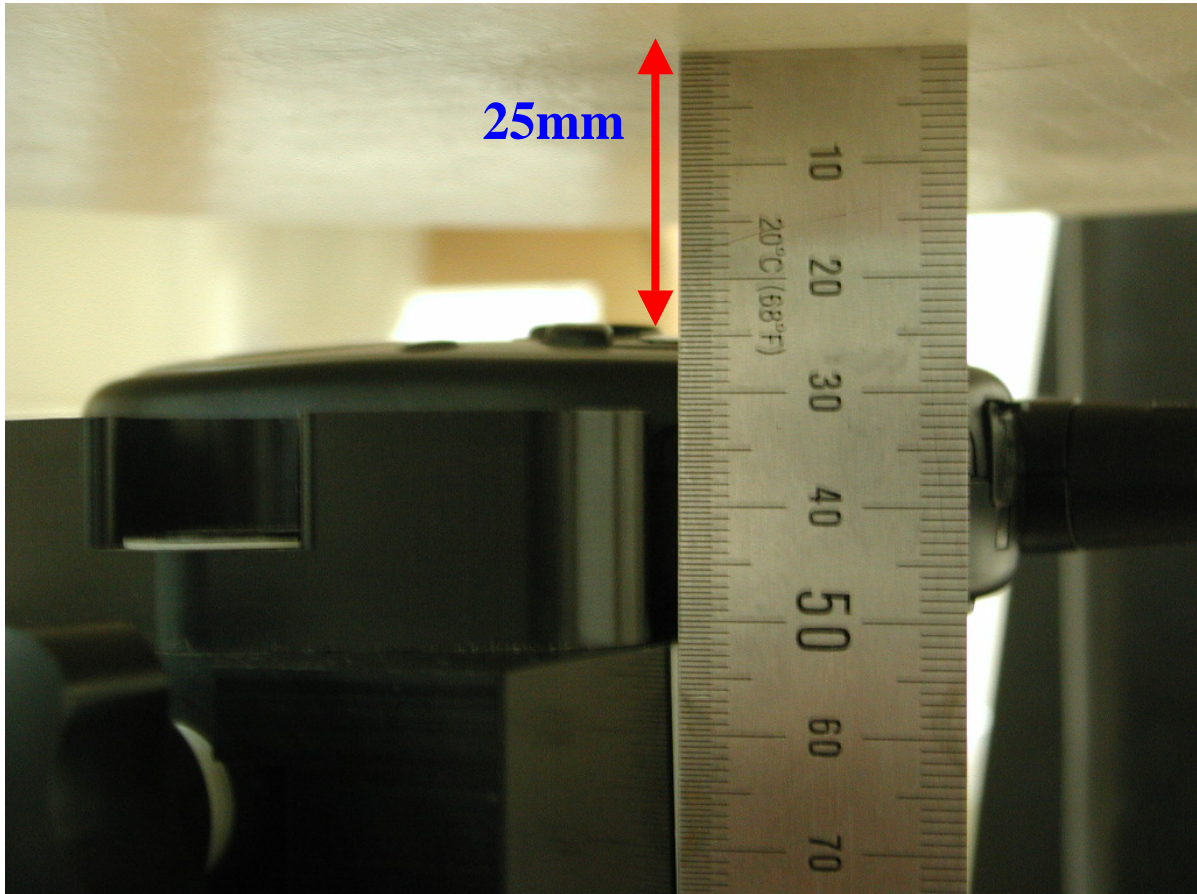


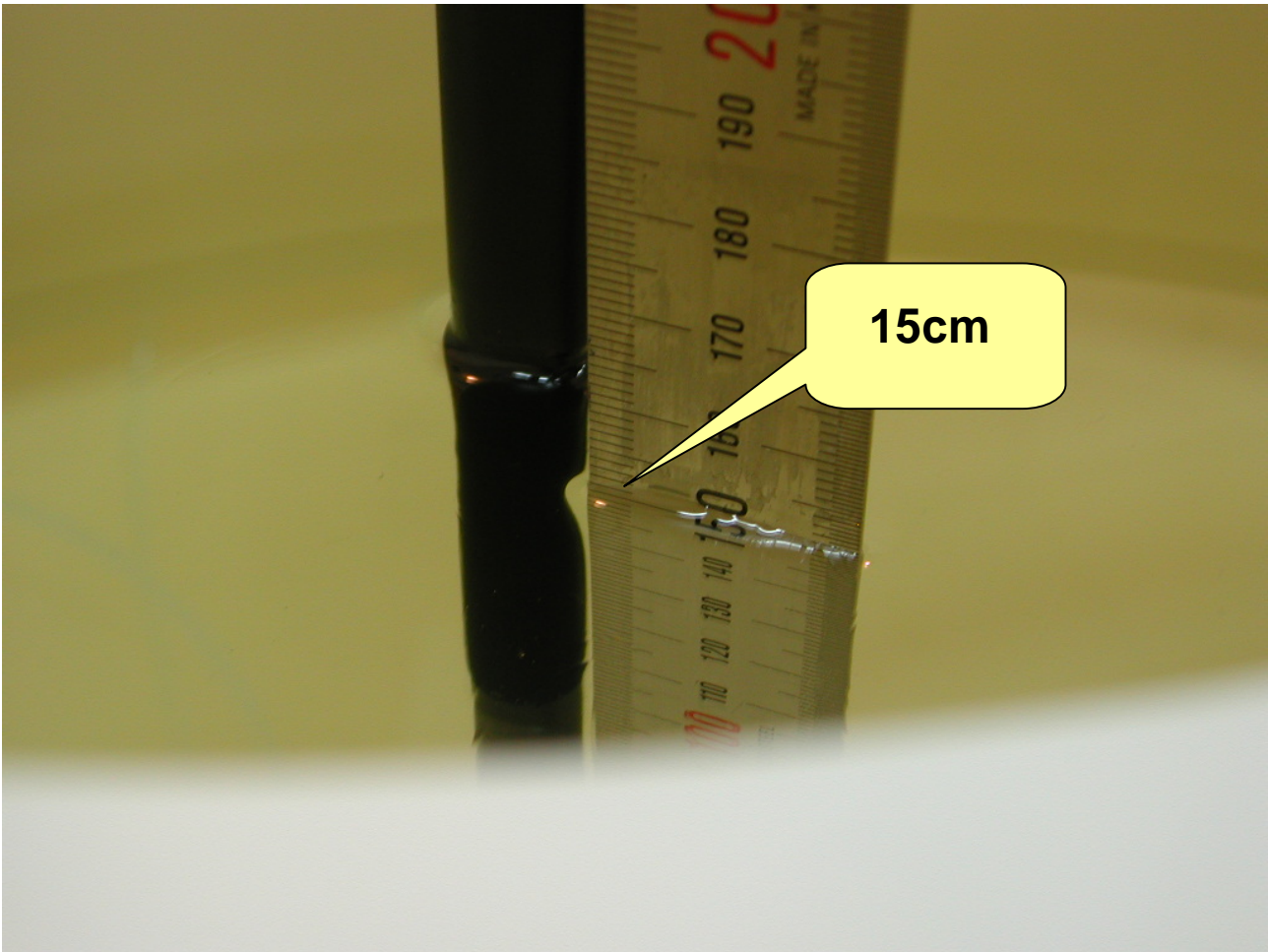
APPENDIX B – EUT TEST SETUP PHOTOGRAPHS





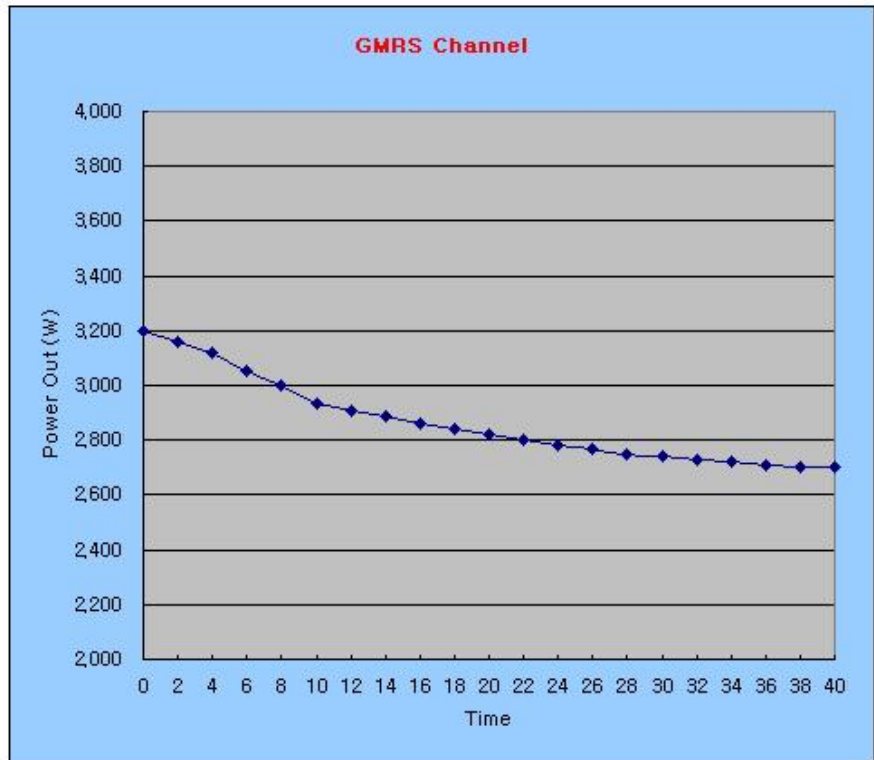


[Tissue Liquid Depth : 15cm]



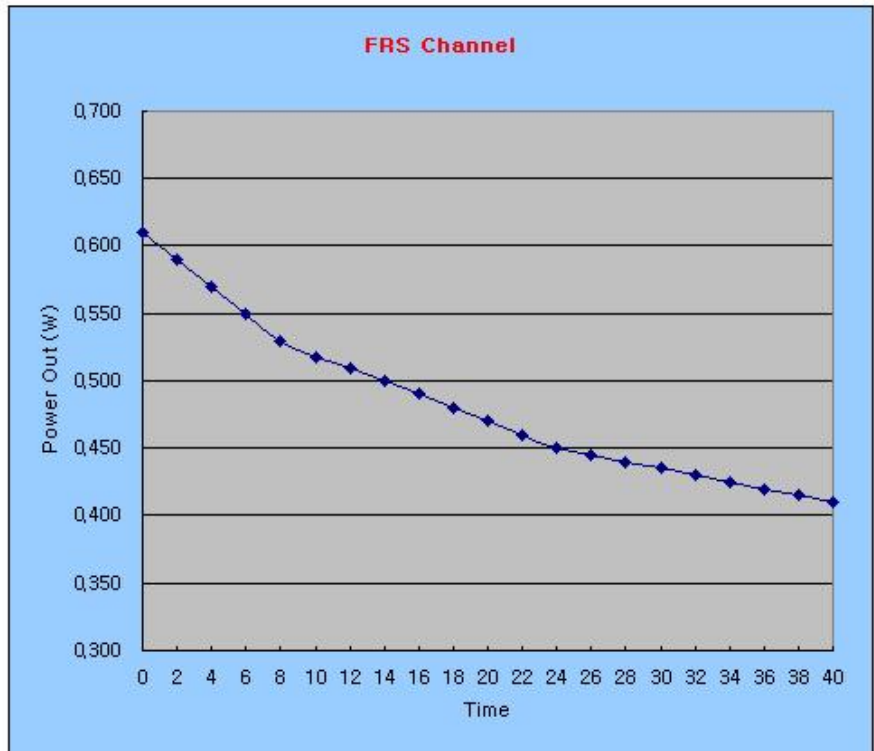
■ Battery Type: Rocket (Alkaline)

GMRS	
Time	Power Out
0	3.200
2	3.160
4	3.120
6	3.050
8	3.000
10	2.932
12	2.910
14	2.890
16	2.860
18	2.840
20	2.820
22	2.800
24	2.780
26	2.770
28	2.750
30	2.740
32	2.730
34	2.720
36	2.710
38	2.700
40	2.700



■ Battery Type: Duracell (Alkaline)

FRS	
Time	Power Out
0	0.610
2	0.590
4	0.570
6	0.550
8	0.530
10	0.517
12	0.510
14	0.500
16	0.490
18	0.480
20	0.470
22	0.460
24	0.450
26	0.445
28	0.440
30	0.435
32	0.430
34	0.425
36	0.420
38	0.415
40	0.410



Date : December 30, 2003

Federal Communications Commission
Authorization and Evaluation Division
7435 Oskland Mills Road
Columbia, MD21046

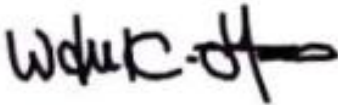
Subject : GMRS 9010 Model Battery Type

To whom it may concern

Here we would like to confirm that the 'AAA' type batteries only should be used

For this subject model GMRS 9010.(FCC ID: PDHGMRS9010)

Sincerely Yours,
TTI tech Co., Ltd.



President / W. K. You